



Danfoss Redia RA Click with RA-IN and RLV-S Installation Guide

[Home](#) » [Danfoss](#) » Danfoss Redia RA Click with RA-IN and RLV-S Installation Guide 

Contents

- [1 Danfoss Redia RA Click with RA-IN and RLV-S](#)
- [2 Product Information](#)
- [3 Product Usage Instructions](#)
- [4 VALVE Installation](#)
- [5 LOCKSHEILD Installation](#)
- [6 Presetting table](#)
- [7 SENSOR Installation](#)
- [8 Documents / Resources](#)



Danfoss Redia RA Click with RA-IN and RLV-S



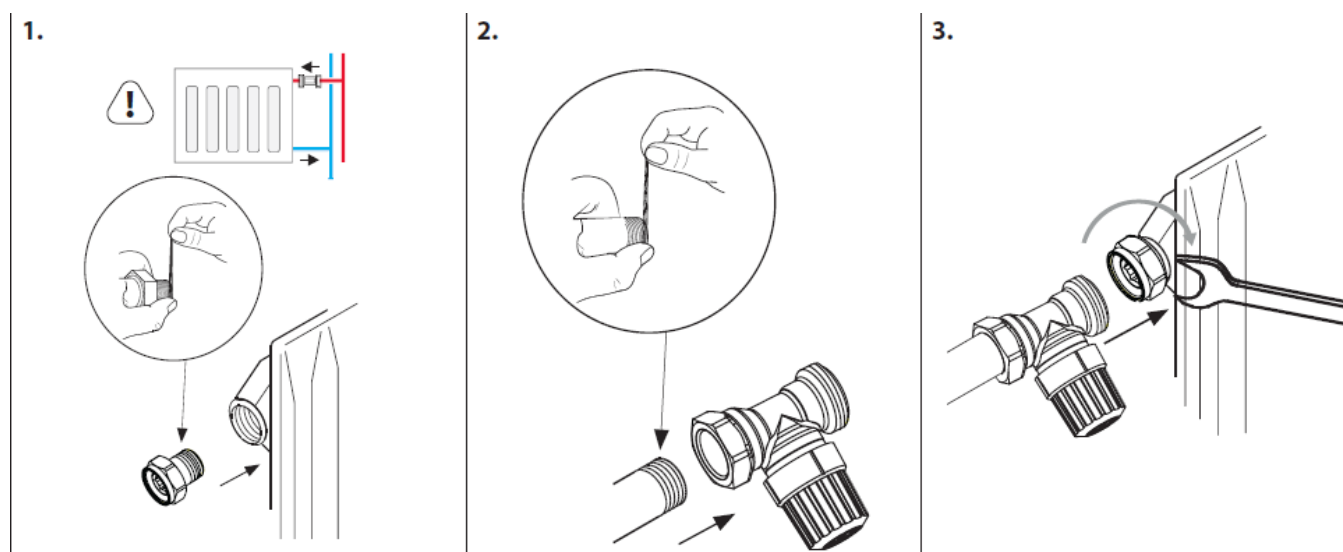
Product Information

This product is an installation guide for a device with the model numbers 015G5332 and 015G5333. It is designed to support wattage levels of 200, 300, 400, 500, 700, 900, 1350, 1800, 1250, 1900, 2550, and 1900, 2900, 3850. The device operates under a pressure of 10kPa.

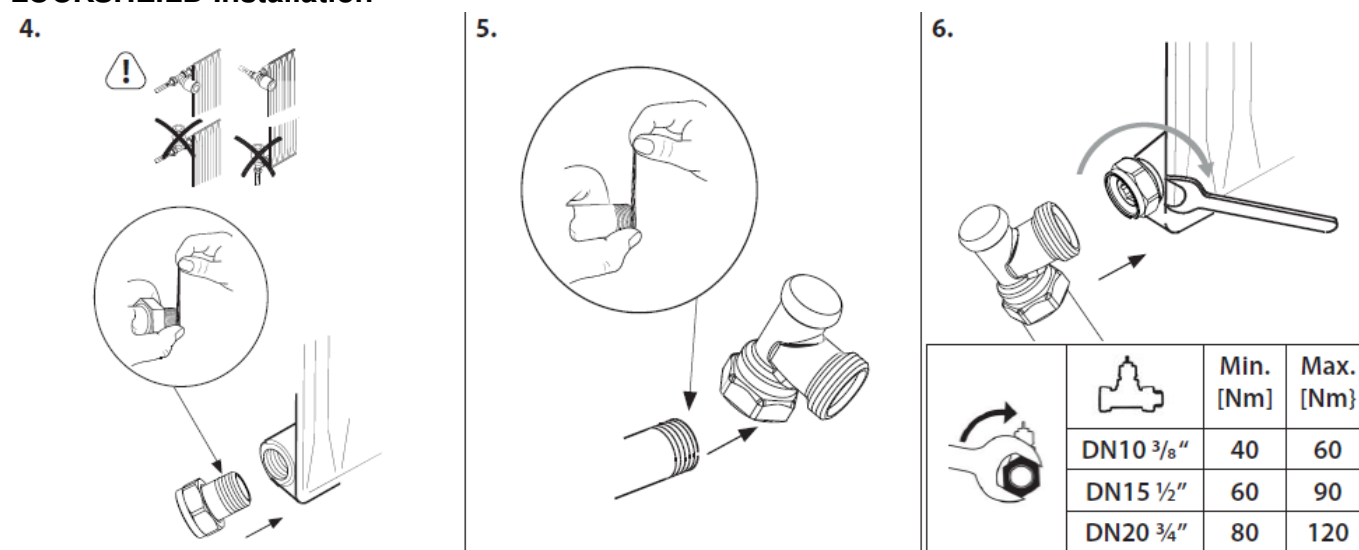
Product Usage Instructions

1. Begin the installation process by referring to the Installation Guide.
2. Follow the step-by-step instructions provided in the guide.
3. Ensure that all necessary components and tools are available before starting the installation.
4. Click on the provided link [AN451752150793en-000101](#) for further information.

VALVE Installation



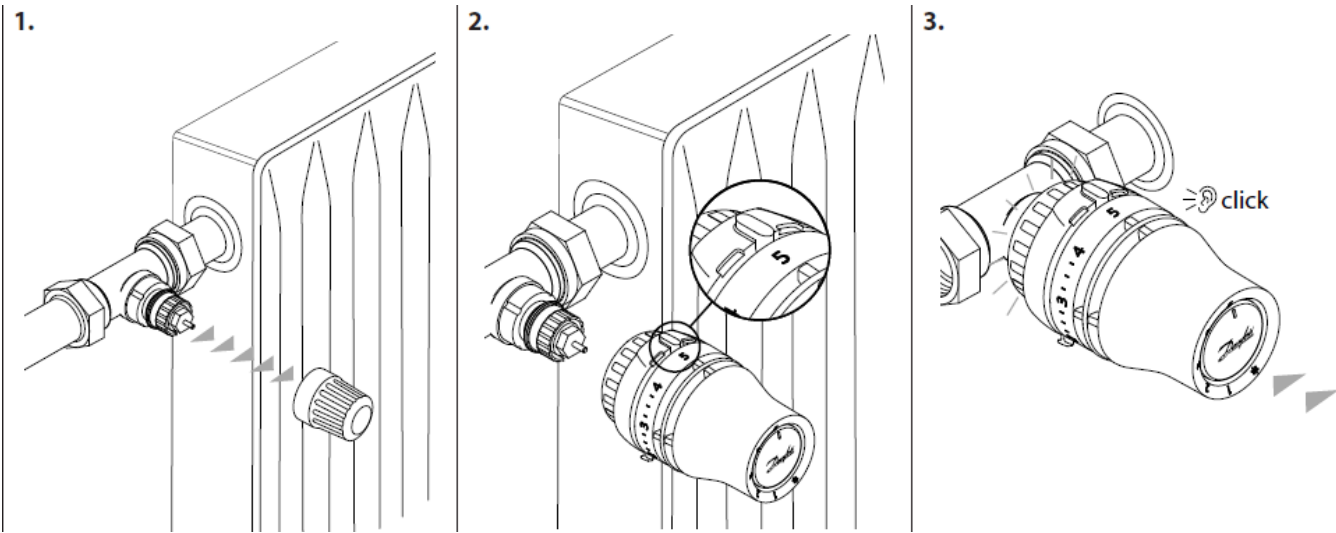
LOCKSHEILD Installation



Presetting table

Code Number: Danfoss Redia® 015G5332 015G5333	T			
	10K	15K	20K	
	~Watt			
	200	300	400	1
	350	500	700	2
	900	1350	1800	3
	1250	1900	2550	4
	1900	2900	3850	N
	p=10kPa			

SENSOR Installation



Danfoss A/S
 Climate Solutions • danfoss.com • +45 7488 2222
 Any information, including, but not limited to information on the selection of product, its application or use, product design, weight, dimensions, capacity or any other technical data in product manuals, catalogs descriptions, advertisements, etc. and whether made available in writing, orally, electronically, online or via download, shall be considered informative and is only binding if and to the extent, explicit reference is made in a quotation or order confirmation. Danfoss cannot accept any responsibility for possible errors in catalogs, brochures, videos and other material.
 Danfoss reserves the right to alter its products without notice. This also applies to products ordered but not delivered provided that such alterations can be made without changes to form, fit or function of the product. All trademarks in this material are property of Danfoss A/S or Danfoss group companies. Danfoss and the Danfoss logo are trademarks of Danfoss A/S. All rights reserved.
 © Danfoss Climate Solutions | 2023.05
 Danfoss Redia® RA click + RA-IN & RLV-S / 015G5332
 015G5333

Documents / Resources



[Danfoss Redia RA Click with RA-IN and RLV-S](#) [pdf] Installation Guide

RA-IN, RLV-S, 015G5332, 015G5333, Redia RA Click with RA-IN and RLV-S, Redia RA Click