

**Contents** [ [hide](#) ]

- [1 Danfoss RAV Ally Radiator Thermostat](#)
- [2 Product Specifications](#)
- [3 Product Usage Instructions](#)
- [4 Safety precautions](#)
- [5 FAQs](#)
- [6 Documents / Resources](#)
  - [6.1 References](#)



## Danfoss RAV Ally Radiator Thermostat



### Product Specifications

- Transmission Frequency: 2.4 GHz
- Transmission Power: Less than 40 mW

# Product Usage Instructions

## Installation Instructions

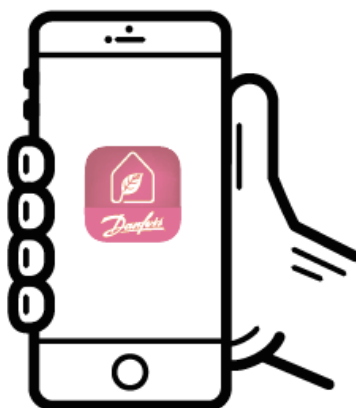
Remove the cover as shown in the diagram and insert 2 AA batteries. Ensure correct battery placement. Screw the Danfoss Ally™ knob onto the mounted adapter until it clicks. Press and hold the knob for 3 seconds. The temperature setting will be displayed on the screen once mounted. Make sure to mount the thermostat on the valve in 'M' mode to prevent damage.

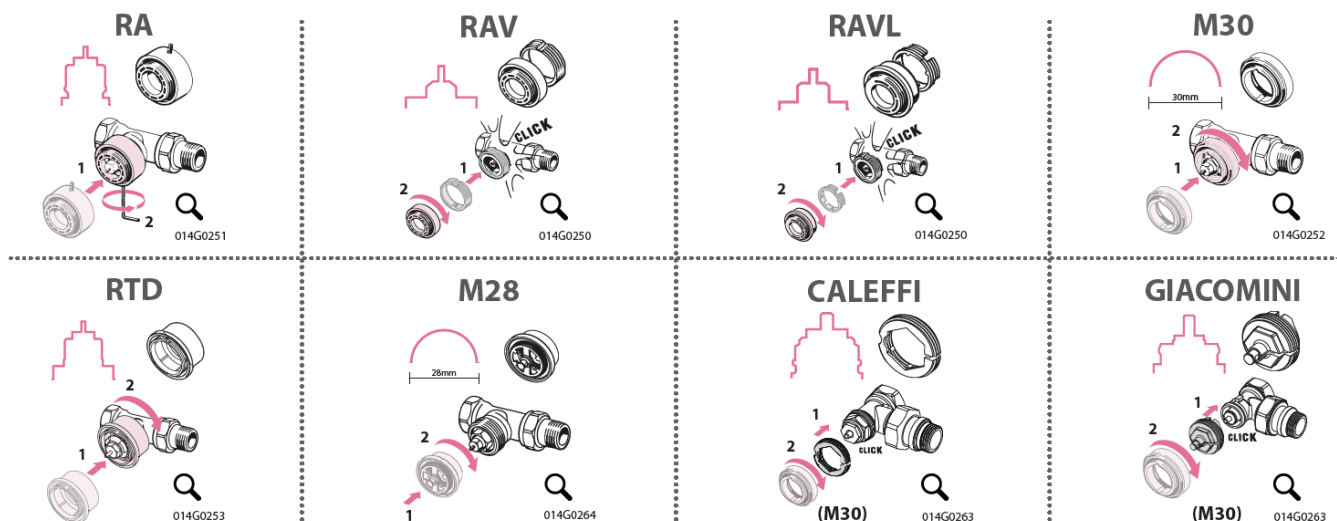
## Disposal Instructions

The thermostat must be disposed of as electronic waste according to local regulations. Please use the manual provided with your gateway and follow the instructions to download the App.



Youtube  
Video Guide





The adapters from the right side are included. Remaining adapters in the overview above must be purchased separately. Adapter code numbers can be found below each adapter illustration.



**RA**



**M30**



**RA**



**RAV**



**M30**



**RAVL**



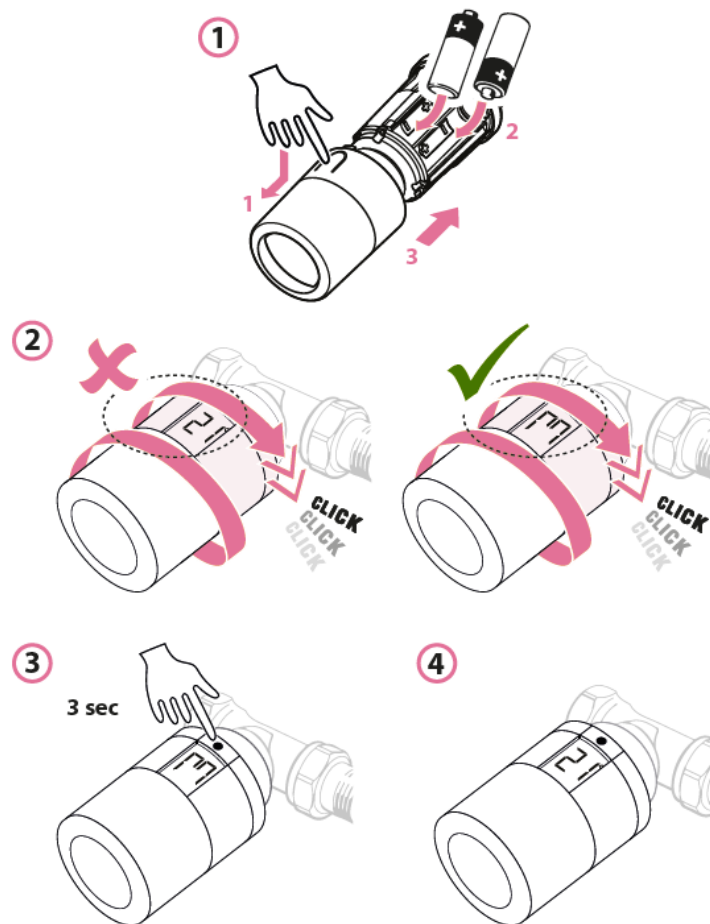
## How to mount the thermostat

Remove the battery cover as shown in the diagram and insert two AA batteries. Make sure the batteries are correctly oriented. Screw the Danfoss Ally™ onto the mounted

adapter until a click sound appears. Press and hold the button for 3 seconds. The temperature set point will show on the screen once the Danfoss Ally™ is mounted.

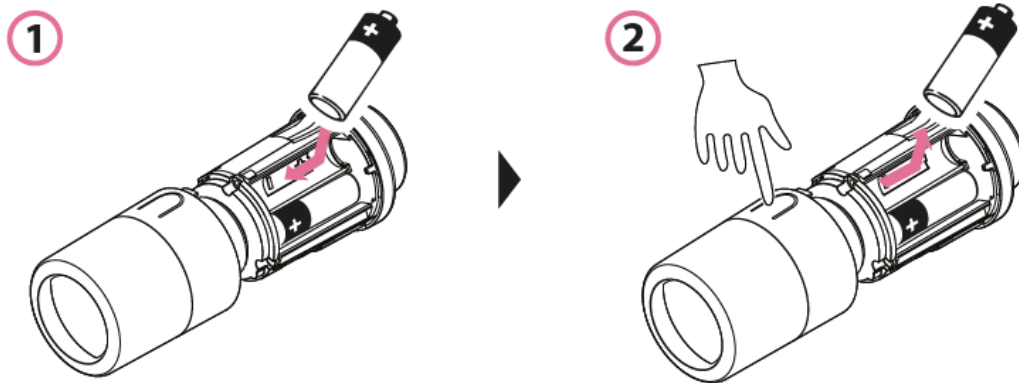
### CAUTION!

Mounting onto the valve must be done in “M” mode, otherwise, that could cause the thermostat damage.

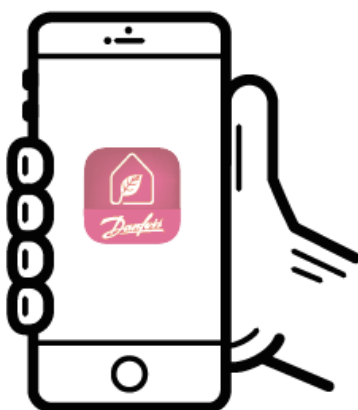


### How to reset the thermostat

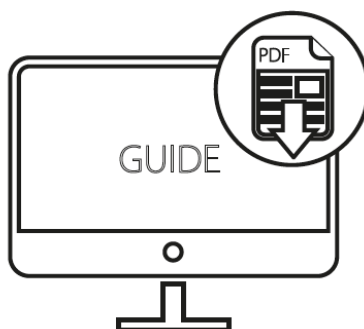
1. Remove the cover and take out one battery.
2. Press and hold. Keep holding while reinserting the battery. The screen will go blank after approximately 3 seconds.



- Continue system setup in the App.



## Download Guide



[ally.danfoss.com](http://ally.danfoss.com)

Transmission Frequency: 2,4 GHz

Transmission Power: < 40 mW



CE



The thermostat must be disposed of as electronic waste.

## Safety precautions

SIMPLIFIED EU DECLARATION OF CONFORMITY Hereby, Danfoss A/S declares that the radio equipment type Danfoss Ally™ complies with Directive 2014/53/EU. The full text of the EU declaration of conformity is available at the following internet address:  
[www.danfoss.com](http://www.danfoss.com)

The thermostat is not intended for children and must not be used as a toy. Do not leave packaging materials where children may be tempted to play with them, as this is extremely dangerous. Do not attempt to dismantle the thermostat as it contains no user-serviceable parts.

- **Danfoss Ltd.**

22 Wycombe End, HP9 1NB, GB

- **Homepage**

[www.allyapprovals.danfoss.com](http://www.allyapprovals.danfoss.com)

Danfoss cannot accept any responsibility for possible errors in catalogs, brochures, videos and other material. Danfoss reserves the right to alter its products without notice. This also applies to products ordered but not delivered, provided that such alterations can be made without changes to form, fit or function of the product. All trademarks in this material are property of Danfoss A/S or Danfoss group companies. Danfoss and the Danfoss logo are trademarks of Danfoss A/S. All rights reserved.

## **FAQs**

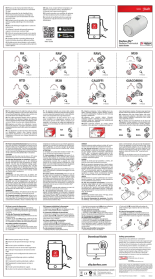
**Q: How do I mount the thermostat?**

**A:** Follow the instructions provided in the user manual. Ensure correct battery placement and mounting in 'M' mode on the valve to prevent damage.

**Q: What is the transmission frequency and power?**

**A:** The transmission frequency is 2.4 GHz, and the transmission power is less than 40 mW.

## **Documents / Resources**



## [Danfoss RAV Ally Radiator Thermostat \[pdf\]](#) User Guide

RA, RAV, RTD, RAVL, M28, M30, GIACOMINI, RAV Ally Radiator Thermostat, RAV, Ally Radiator Thermostat, Radiator Thermostat, Thermostat

## References

- [User Manual](#)

📁 Danfoss

🔍 Ally Radiator Thermostat, Danfoss, GIACOMINI, M28, M30, RA, Radiator Thermostat, RAV, RAV Ally Radiator Thermostat, RAVL, RTD, Thermostat

---

## Leave a comment

Your email address will not be published. Required fields are marked \*

Comment \*

Name

Email

Website

☐ Save my name, email, and website in this browser for the next time I comment.

**Post Comment**

**Search:**

e.g. whirlpool wrf535swhz

**Search**

[Manuals+](#) | [Upload](#) | [Deep Search](#) | [Privacy Policy](#) | [@manuals.plus](#) | [YouTube](#)

This website is an independent publication and is neither affiliated with nor endorsed by any of the trademark owners. The "Bluetooth®" word mark and logos are registered trademarks owned by Bluetooth SIG, Inc. The "Wi-Fi®" word mark and logos are registered trademarks owned by the Wi-Fi Alliance. Any use of these marks on this website does not imply any affiliation with or endorsement.