



Danfoss RA-DV Dynamic Valve Demounting Tool User Guide

[Home](#) » [Danfoss](#) » Danfoss RA-DV Dynamic Valve Demounting Tool User Guide 

Danfoss RA-DV Dynamic Valve Demounting Tool User Guide



Contents

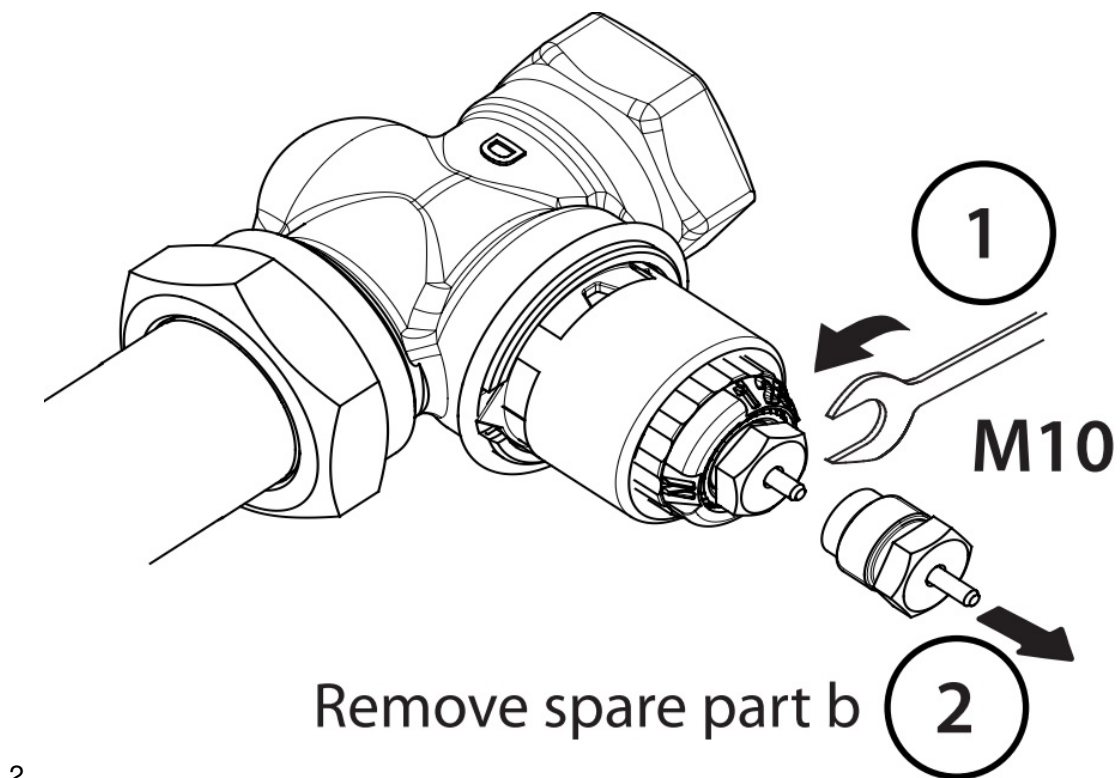
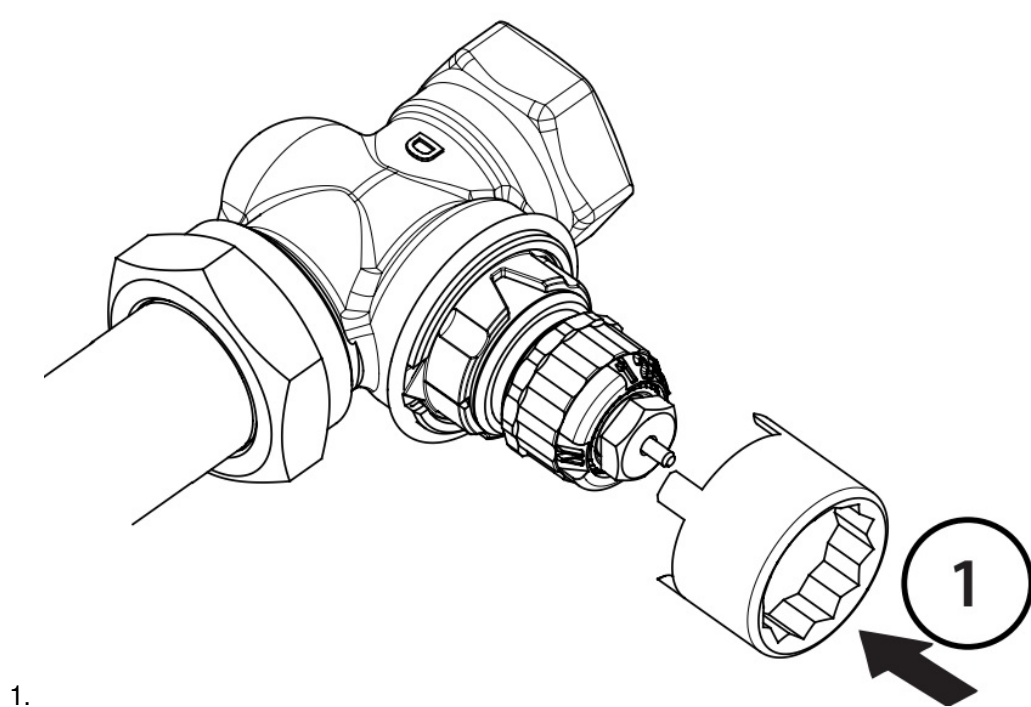
[1 INSTALLATION
INSTRUCTION](#)

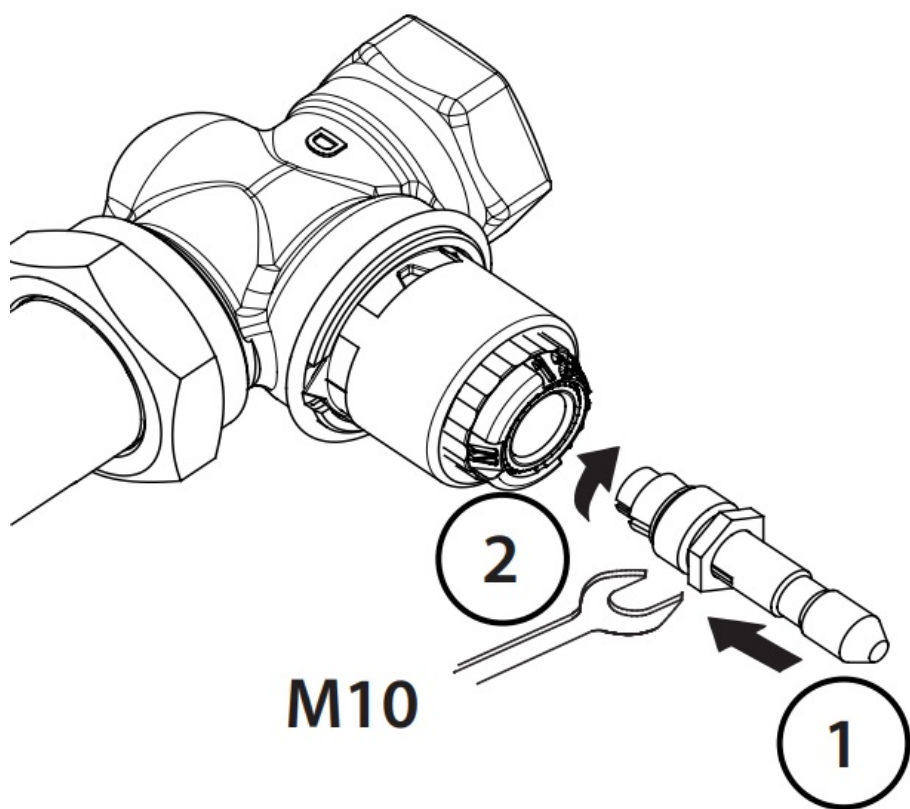
[2 Documents / Resources](#)
[2.1 References](#)

INSTALLATION INSTRUCTION

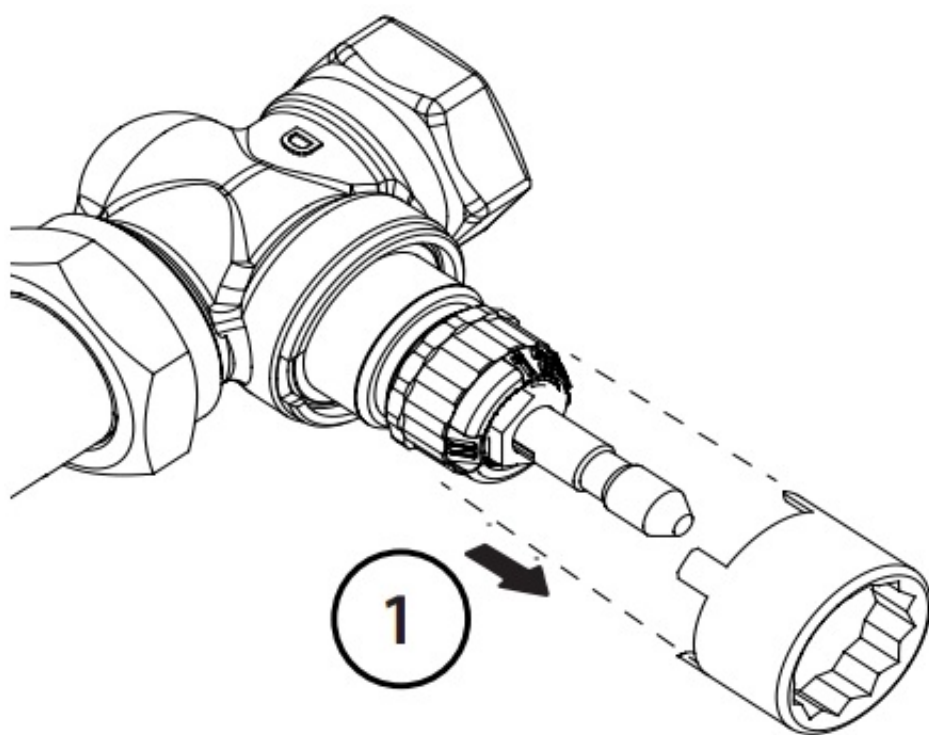


Turn OFF the pump before starting, max 3 bar pressure

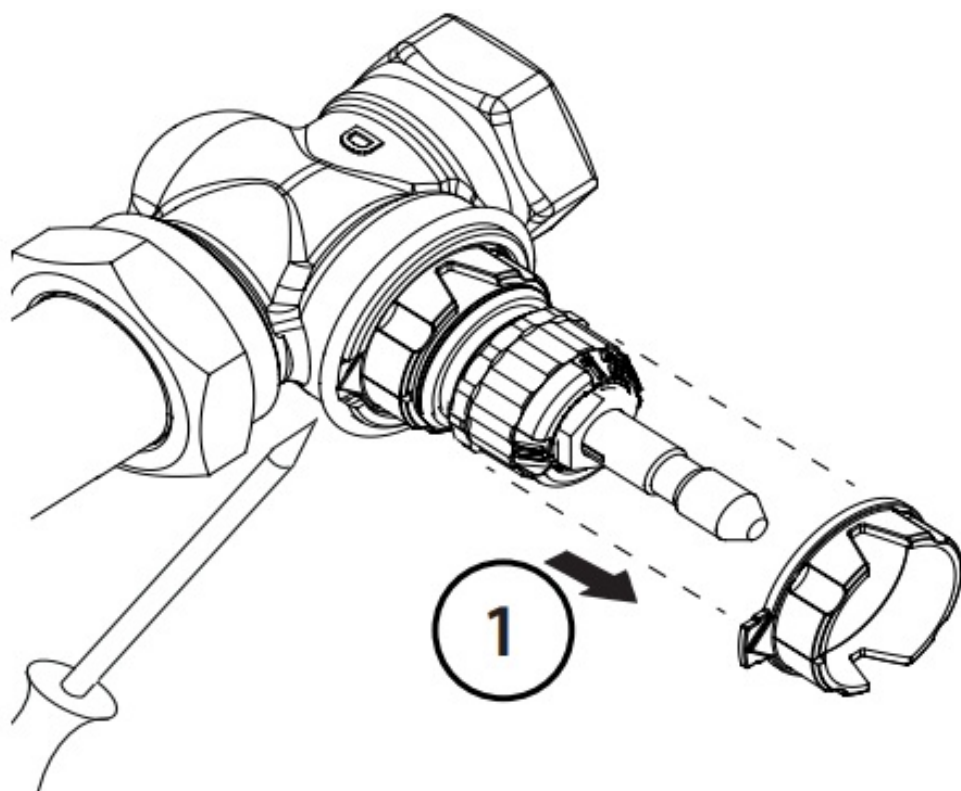




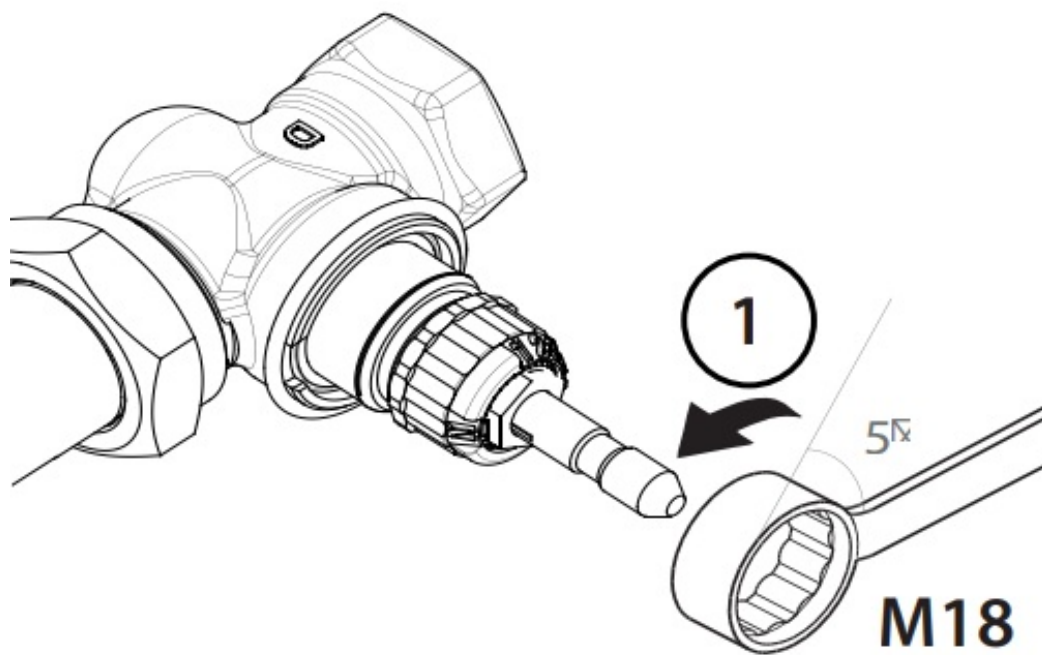
3.



4.

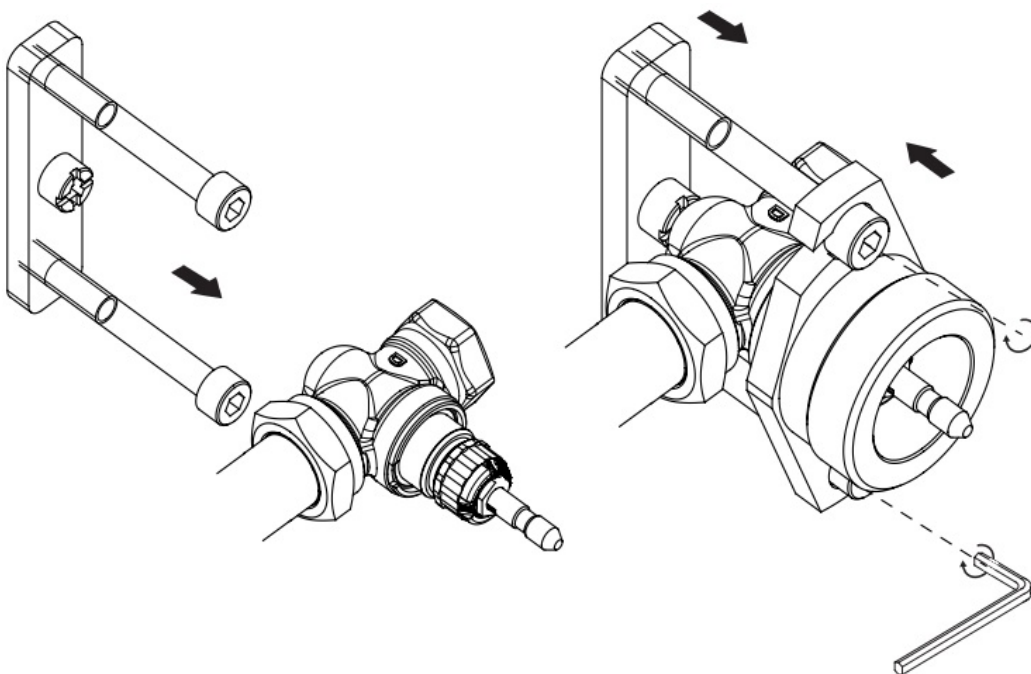


5.

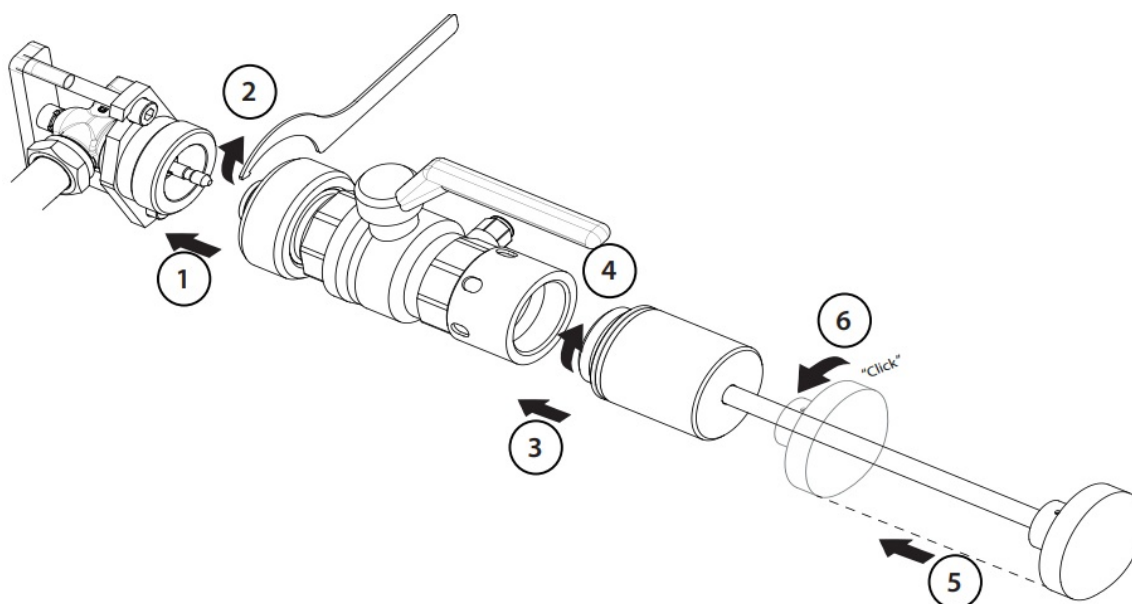
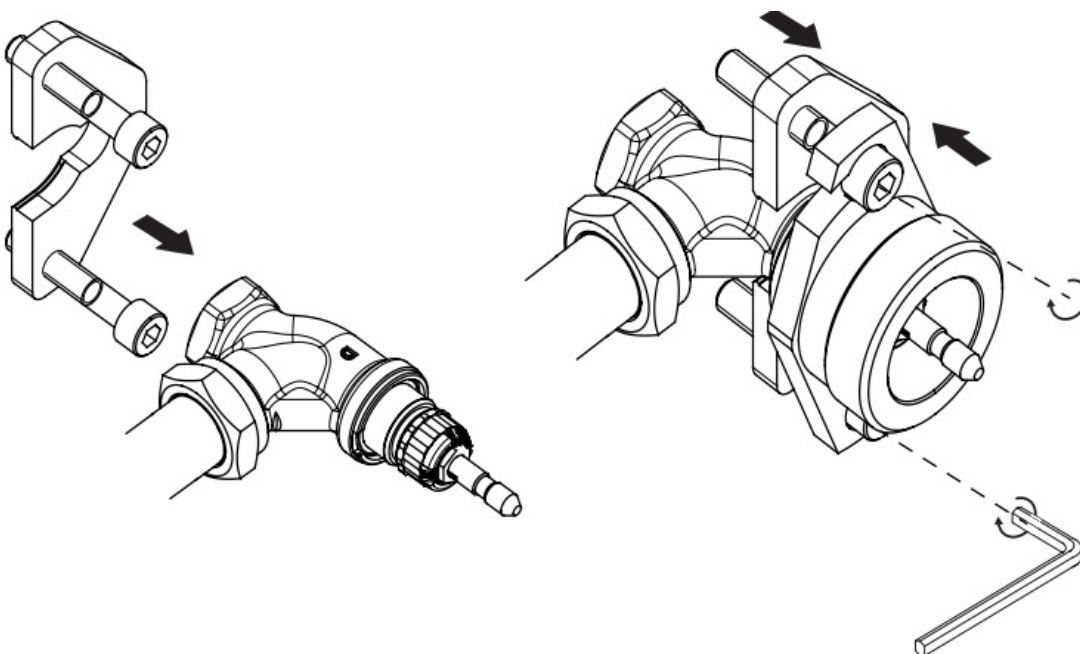


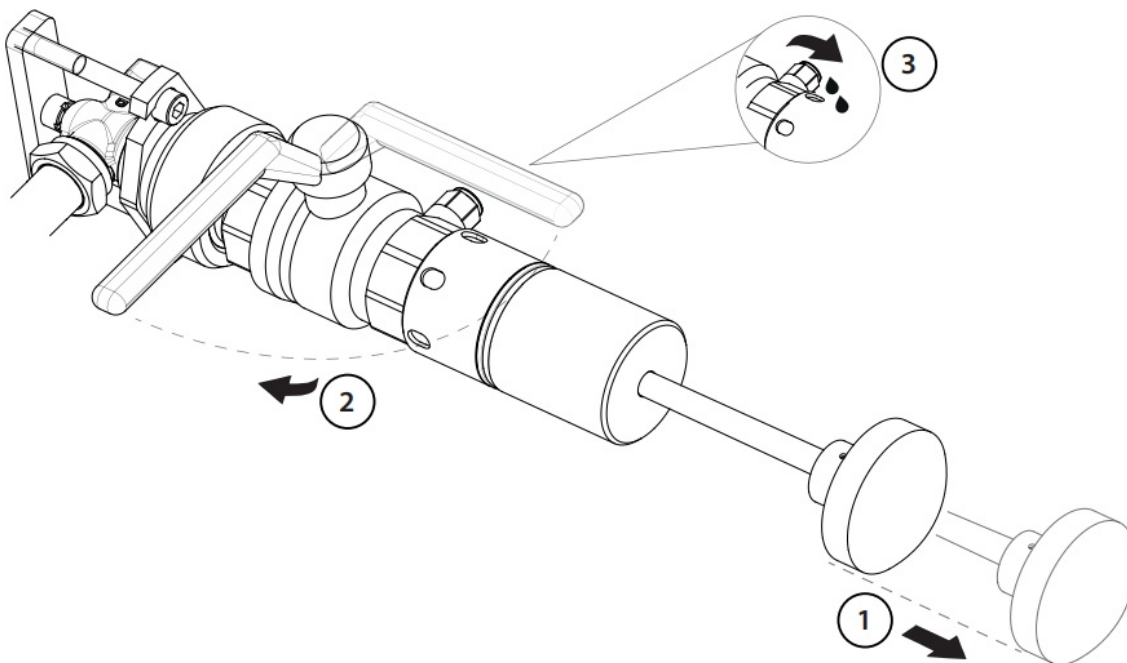
6.

7. Straight)

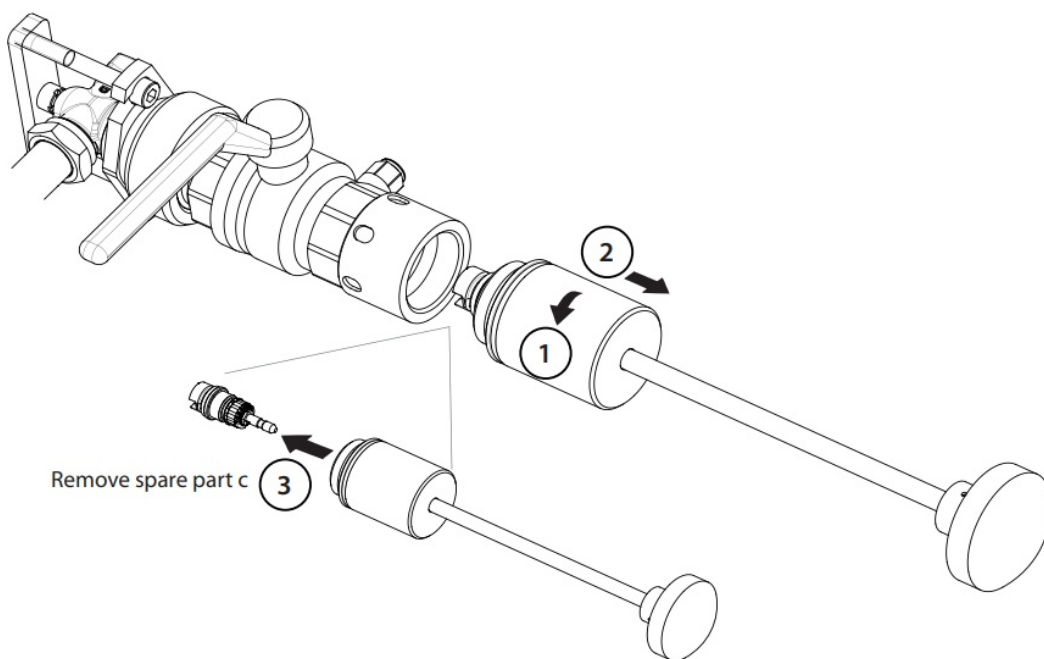


(Angle)



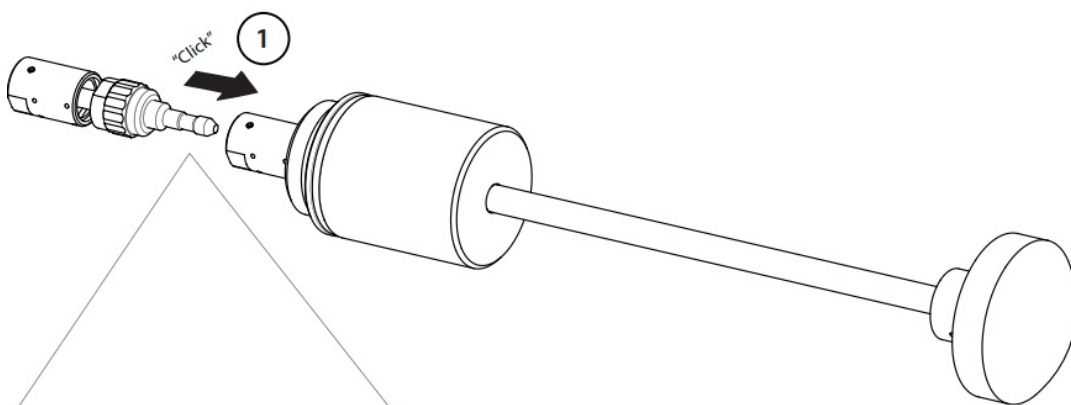


9.

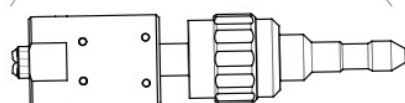


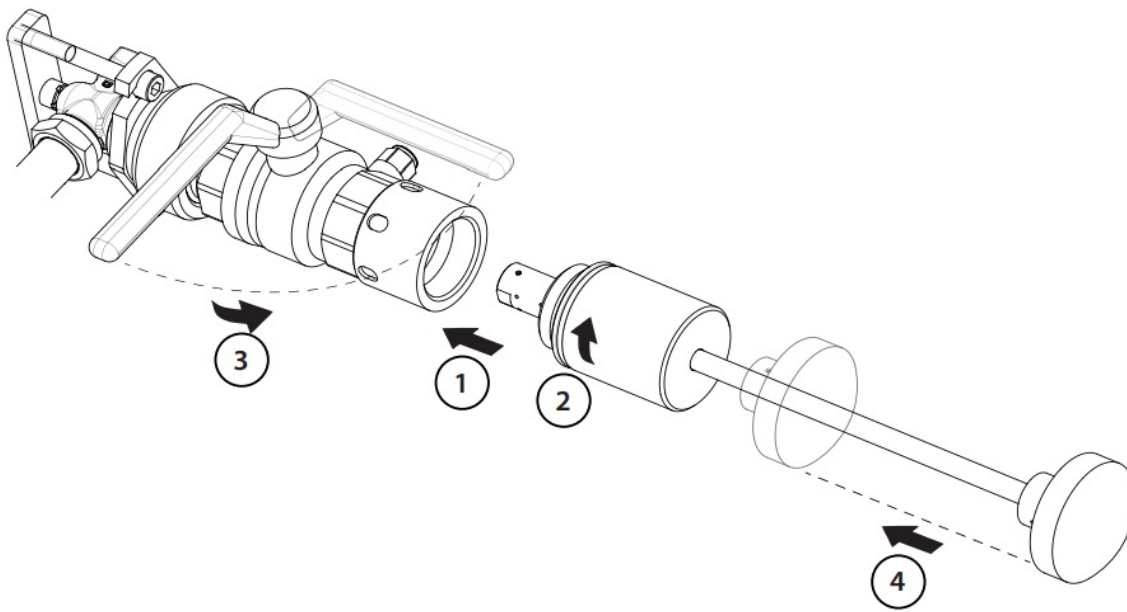
Remove spare part c

10.

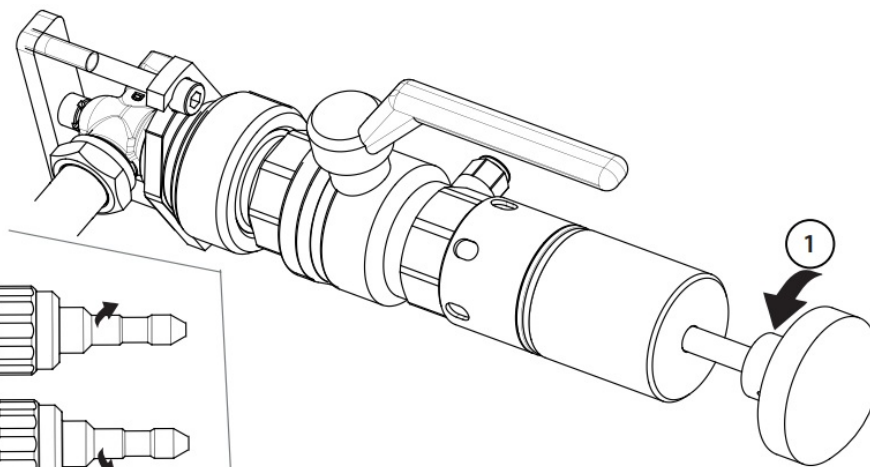


11.

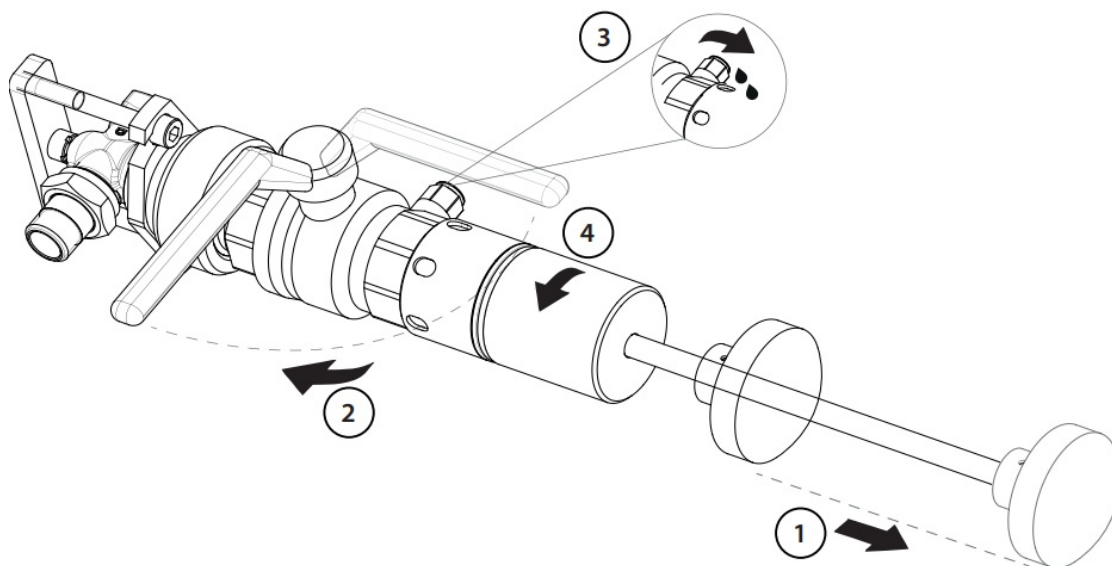




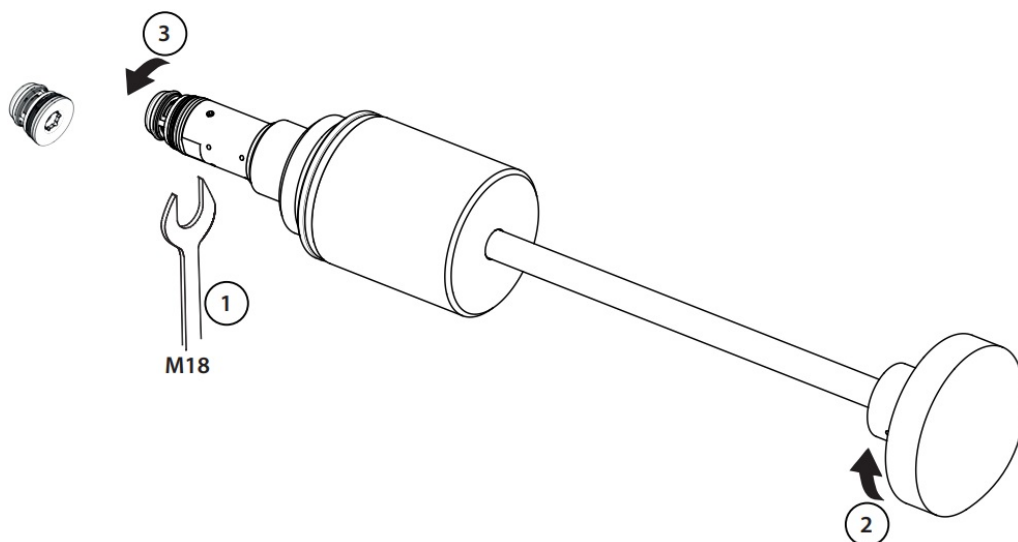
12.



13.



14.



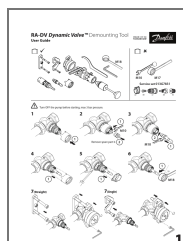
15.

Danfoss A/S Heating Solutions Harp avenged 11 8600 Silkeborg Denmark

Email: heating.solutions@danfoss.com
www.heating.danfoss.com



Documents / Resources



[Danfoss RA-DV Dynamic Valve Demounting Tool](#) [pdf] User Guide
 M18, M10, M17, RA-DV Dynamic Valve Demounting Tool, RA-DV, Dynamic Valve Demounting Tool, Valve Demounting Tool, Demounting Tool, Tool

References

- [Danfoss Climate Solutions for heating | Efficient solutions for superior comfort | Danfoss](#)
- [User Manual](#)

[Manuals+](#), [Privacy Policy](#)

This website is an independent publication and is neither affiliated with nor endorsed by any of the trademark owners. The "Bluetooth®" word mark and logos are registered trademarks owned by Bluetooth SIG, Inc. The "Wi-Fi®" word mark and logos are registered trademarks owned by the Wi-Fi Alliance. Any use of these marks on this website does not imply any affiliation with or endorsement.