



Danfoss QRV 9100 Airflex Quick Release Valve Installation Guide

[Home](#) » [Danfoss](#) » Danfoss QRV 9100 Airflex Quick Release Valve Installation Guide 



Installation, operation and maintenance of Airflex Quick Release Valve



Contents

- 1 QRV 9100 Airflex Quick Release Valve
- 2 Introduction
- 3 Description
- 4 How it works
- 5 Specifications
- 6 Installation
- 7 Air piping
- 8 Mounting
- 9 Maintenance
- 10 Ordering information/technical assistance
- 11 Revisions
- 12 products we offer:
- 13 Documents / Resources
 - 13.1 References
- 14 Related Posts

QRV 9100 Airflex Quick Release Valve



WARNING

Forward this manual to the person responsible for Installation, Operation and Maintenance of the product described herein. Without access to this information, faulty Installation, Operation or Maintenance may result in personal injury or equipment damage.



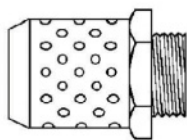
CAUTION

Use Only Genuine Airflex ® Replacement Parts. The Airflex Division of Danfoss Power Solutions recommends the use of genuine Airflex replacement parts. The use of non-genuine Airflex replacement parts could result in substandard product performance, and may void your Danfoss warranty.

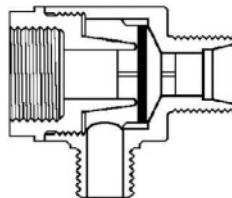
For optimum performance, contact Airflex: In the U.S.A. and Canada: (800) 233-5926 Outside the U.S.A. & Canada: (216) 281-2211 Internet: www.airflex.com

Note: This manual pertains to the AIRFLEX DIAPHRAGM OPERATED QUICK RELEASE VAVLE which is identified by its silver housing. If your valve housing is anodized green, service it according to manual QRV 9090 or replace the entire valve with the diaphragm style.

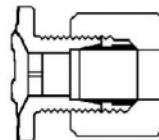
AIRFLEX®Quick release valve



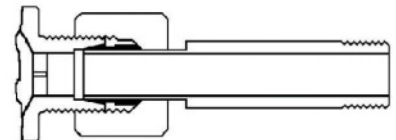
MUFFLER



BASIC QRV
ASSEMBLY



TUBING
CONNECTION



PIPE ADAPTER

Figure 1. Quick release valve

TABLE 1 : QRV Model and kit numbers

RV sizes →	3/8	1/2	3/4	1"
Basic number →	145406	145407	145141	146506
RV Config. Options and kits	Suffix designation (Eg. 1454060E)			
W/Metal sleeve	DE	DE	DE	BD
W/Rubber sleeve	DF	DF	DF	–
W/Inlet pipe thread	DG	DG	DG	–
W/Metal sleeve & Muffler•	DS	DS	DS	BE
W/Rubber sleeve & Muffler**	DR	DR	DR	–
W/Inlet pipe thread & Muffler'	DT	DT	DT	–
W/Metal sleeve & pipe adapter	DL	DL	DL	BR
W/Metal sleeve, Pipe adapter & Muffler	–	–	–	CA
W/Metal sleeve & 1/4 pipe adapter *	DM	DM	DM	–
Diaphragm & End cap kit***	DP	DP	DP	DP
Muffler kit***	145407DQ			DQ

The option and kit designation letters must be added as a suffix to the basic model number to completely identify the QRV model or kit.

* 1/4 NPT adapter for 3/8 QRV only.

** Mufflers are not factory-assembled to QRV. See Installation section.

*** Diaphragm and end cap kit contains a diaphragm, end cap and sealant. Muffler kit contains muffler and sealant.

Introduction

Throughout this manual there are a number of HAZARD WARNINGS that must be read and adhered to in order to prevent possible personal injury and/or damage to equipment. Three signal words “DANGER”, “WARNING” and “CAUTION” are used to indicate the severity of a hazard, and are preceded by the safety alert symbol.



DANGER

Denotes the most serious hazard, and is used when serious injury or death WILL result from misuse or failure to follow specific instructions.



WARNING

Used when serious injury or death MAY result from misuse or failure to follow specific instructions.



CAUTION

Used when injury or product/equipment damage may result from misuse or failure to follow specific instructions. It is the responsibility and duty of all personnel involved in the installation, operation and maintenance of the equipment on which this device is used to fully understand the:

	DANGER
	WARNING
	CAUTION

procedures by which hazards can be avoided.

Description

The Airflex® QRV is a quick release valve that facilitates the release of air from a pressurized chamber i.e., air cylinders, clutches, brakes or other pneumatic devices.

In essence it provides an exhaust port at the chamber rather than exhausting through long supply lines and control components. The function they perform is especially important in high speed cycling equipment. They prevent sluggish operation, overlap and excessive wear. Their importance in an air control system cannot be overemphasized. QRV's are available in four sizes for direct connection to 3/8, 1/2, 3/4 and 1 inch pipe. Models are also available which permit 1/2, 5/8 and 3/4 inch outside diameter tubing connections to the QRV inlet port.

Exhaust noise from the valve can be reduced by using a muffler, which threads into the tapped hole in the end cap.

How it works

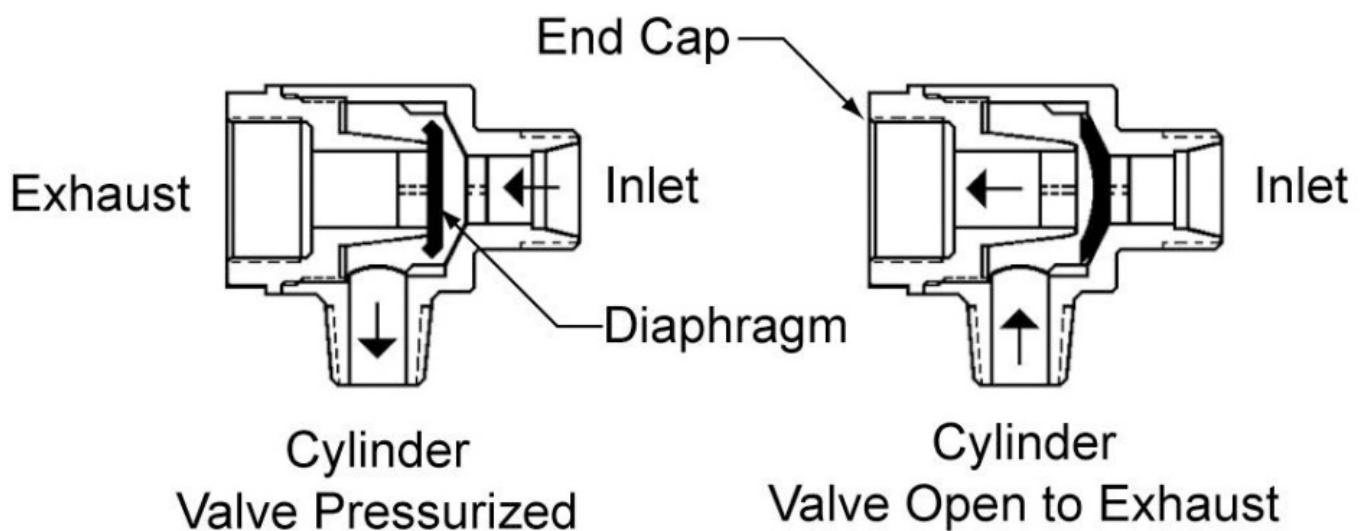


Figure 2.

The Airflex QRV contains a diaphragm designed to function on a pressure differential. Air pressure at the valve inlet seats the diaphragm on the end cap, closing the exhaust port. Applied pressure, acting on the outer unsupported diaphragm area, deflects it and allows air to flow to the cylinder port. See Figure 2.

When a pressure drop occurs in the air supply, the pressure differential lifts the diaphragm from the exhaust port and seats it on the inlet port. Air from the pressurized device can now blow freely to atmosphere through the valve's exhaust port. If the cylinder pressure falls below the inlet pressure, the pressure differential on the diaphragm will close the exhaust port, preventing further exhaust.

Specifications

Table 2 : Port sizes

QRV Size	Inlet	Cylinder
8-Mar	3/8 NPT or 1/2 OD Tube	3/8 NPT
2-Jan	1/2 NPT or 5/8 OD Tube	1/2 NPT
4-Mar	3/4 NPT or 3/4 OD Tube	3/4 NPT
1	1" OD Tube	1" NPT

Table 3 : Flow capacity in SCFM(m3/min)*

QRV Size	Inlet	Cylinder to Exhaust
8-Mar	121 (3.4)	206 (5.8)
2-Jan	172 (4.9)	256 (7.2)
4-Mar	287 (8.1)	376 (17.2)
1	Contact factory	

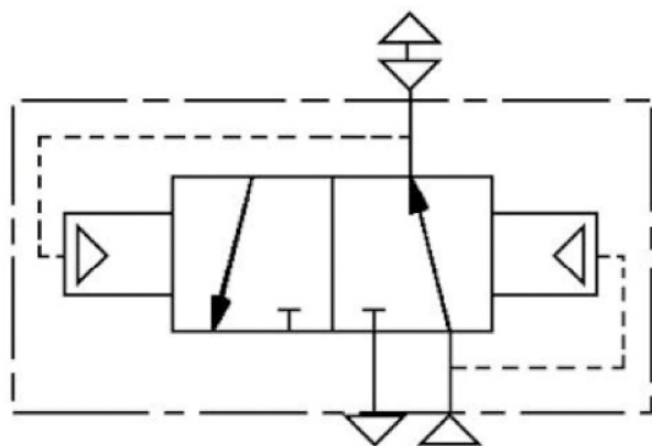
* At 100 PSIG (6.9 Bar) inlet pressure with full pressure drop.

Maximum operating pressure:

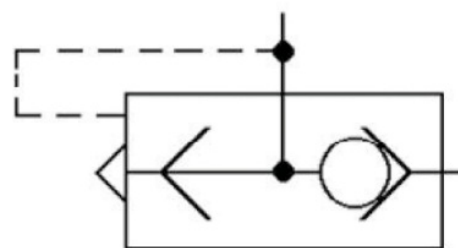
150 PSI (10.3 Bar) Minimum sealing pressure:

Air quality : Clean and dry to avoid contamination of housing and diaphragm. Any additives used in the air supply must be compatible with valve materials. Operating emperature range : -40°F (-40°C) to 120°F (49°C) Mean life : Over 5 million cycles 75 PSI (5.1 Bar) and 80°F (27°C). Diaphragm material : Polyurethane Housing material : Zinc alloy End cap material : Noryl ®

Graphic symbols:



ANSI Symbol



ISO Symbol

Figure 3.

Installation



WARNING

Before performing any work, read this manual and study all figures. Assure yourself that you understand and can do what is required in each step. Failure to follow these instructions may affect quick release valve operation and may result in exposure to personal injury.

WARNING

Before installing the valve, set and block the machine or equipment in a secure position; close the air shutoff valve and exhaust air from air lines; and disconnect all electrical power.

Air piping

2.1.1 For fastest response time, use an inlet pipe size equal to or larger than the quick release valve size. Minimize the length of pipe between the quick release valve and air control valve. Keep the number of fittings, bends and other restrictions in the inlet line to a minimum.

2.1.2 Piping should be free of foreign material such as pipe thread sealant, metal chips, etc. Pipe and tubing ends must be reamed after cutting to prevent a reduction of effective pipe or tube diameter.

CAUTION

Do not allow foreign matter to enter the quick release valve. Particles of foreign matter can prevent diaphragm sealing and cause air leakage.

2.1.3 Refer to 1.3 for air quality, additives and allowable operating pressures.

Mounting

2.2.1 Screw the cylinder port of the quick release valve into the female port of the device using a minimum of pipe thread sealant. Use a wide, fiat faced wrench which will not crimp or damage the valve body. The quick release valve must be torqued enough to produce a tight seal, but not more than the value given in Table 4.

WARNING

Do not position the quick release valve exhaust port in the up position or allow foreign matter to enter the valve housing. Particles of foreign matter will enter the exhaust air stream and/or prevent diaphragm seating. Either condition could result in personal injury or damage to equipment.

WARNING

Position the quick release valve exhaust port so that the exhaust air stream does not strike operating personnel. Particles of foreign matter picked up by the air stream can cause personal injury.

CAUTION

Position the quick release valve exhaust port so that there are no restrictions to the exhaust air flow. Any restriction will slow down the valve response time. Table 4 : Maximum allowable tightening torque

QRV Size	Torque
8-Mar	40 lb. ft. (54 Nm)
2-Jan	50 lb. ft. (67 Nm)
4-Mar	
1	

2.2.2 If the quick release valve has pipe threads on the inlet port, make a direct pipe connection.

Do not exceed the tightening torques given in Table 4.

2.2.3 For quick release valves having tubing connections, slide the nut and sleeve onto the inlet air tubing and insert the tubing or pipe adapter into the valve housing until it bottoms. Slide the sleeve into its seat in the housing. Tighten the nut sufficiently to produce an air seal but not more than the value given in Table 4.

2.2.4 If a muffler is to be used, install per the following instructions.

WARNING

Loctite ® must be used where called for in the following procedure. Mufflers installed without Loctite ® may work loose during operation resulting in personal injury.

Note: Quick release valves supplied prior to September, 1989 do not have threaded end caps to accept the muffler.

The end caps on these valves must be replaced. Hence order both “Diaphragm & End Cap Kit” and “Muffler Kit” for maintenance. Refer to the Maintenance section in this manual for end cap replacement.

Note : Muers are not factory-assembled to the quick release valves due to possible interference with the rims of Airflex clutch elements.

2.2.4.1 Thoroughly clean the female threads in the quick release valve end cap and the male threads on the muffler.

2.2.4.2 Apply Loctite ® #222 (included in the kit) to the threads on the muffler, using one drop per thread, and screw the muffler into the end cap. Torque the muffler to 60 lb.-in. (7 Nm).

2.3 Testing

2.3.1 Apply air pressure to the quick release valve. The valve and its connections should not leak under pressure. If the valve leaks, refer to the Maintenance section in this manual.

2.3.2 Cycle the valve several times to ensure proper operation. If the valve response time appears sluggish, check for restrictions in the air supply line.

Maintenance



WARNING

Before performing any work, read this manual and study all figures. Assure yourself that you understand and can do what is required in each step. Failure to follow these instructions may affect quick release valve operation and may result in personal injury.

Two quick release valve replacement kits are available for valve rebuilding. An end cap/diaphragm kit is available for valves not having mu ffiers, and contains an end cap, diaphragm and tube of Loctite ® #222. In addition to this a muffier kit is available for muffier replacement only and it contains muffier and tube of Loctite ® #222. It is advisable to stock at least one spare quick release valve for each size used in an installation.

The quick release valve should be periodically checked for proper functioning. If the valve fails to seal, it should be inspected internally. Usually foreign material will be found which has been carried through the piping. If a valve becomes ineffective after prolonged service, it can be restored to good operating condition by rebuilding.

3.1 Valve and diaphragm service



WARNING

Before performing any work on the valve, set and block the machine or equipment in a secure position; close the air shuto valve and exhaust all air from the air lines; and disconnect all electrical power in order to prevent personal injury and/or equipment damage.

3.1.1 If the quick release valve exhaust port is positioned downward, it will be dificult to service the diaphragm. It is recommended that the valve be removed from the equipment and bench-serviced.

3.1.2 Use a fiat faced wrench to unscrew the muer (if present) and the end cap. The diaphragm may fall out of the housing at this time. Discard the end cap, muffier and diaphragm.

Note:

The end caps on quick release valves manufactured prior to September, 1989, have hexshaped exhaust ports to accommodate an allen wrench for end cap removal. Refer to Table 5 for the appropriate wrench size to remove the end cap. Discard after removal.

Table 5 : End cap allen wrench size

QRV Size	Width across fiats
8-Mar	1/2"
2-Jan	3/4"
4-Mar	
1	N/A

- 3.1.3 If the diaphragm did not fall out of the housing, gently pry along its outside diameter, being careful not to damage the sealing surface on the housing.
- 3.1.4 Inspect the diaphragm sealing surface in the housing (shown on figure) If the surface is worn, scratched or corroded, the entire quick release valve must be replaced.

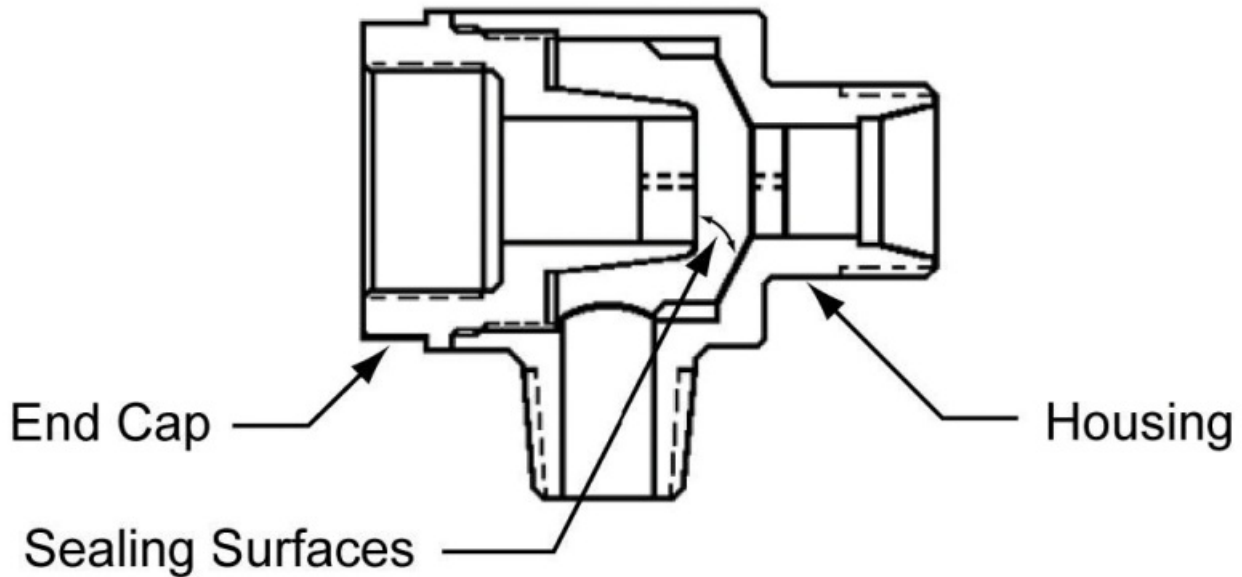


Figure 4.

! WARNING

Do not attempt to renew the diaphragm sealing surface by sanding or machining. Machining the surface will increase the diaphragm operating gap and cause the valve to malfunction.

- 3.1.5 Thoroughly clean the inside of the housing and the internal threads in the housing.

! CAUTION

Do not allow foreign matter to enter either the valve housing or muffler. Particles of foreign matter can prevent diaphragm sealing.

- 3.1.6 Insert a new diaphragm into the housing so it bottoms against the inlet port.

WARNING

Loctite ® must be used where called for in the following procedure. An end cap and/or muffler installed without Loctite ® may work loose during operation resulting in personal injury or equipment damage.

- 3.1.7 Remove and discard the protective cap from the replacement end cap. Apply Loctite ® #222 to the threads of the end cap, using one drop per thread, and screw the end cap into the housing. Make sure the diaphragm is located properly in the housing. Torque the end cap to 60 lb-in. (7Nm).

- 3.1.8 If there is sufficient swing clearance on the equipment, the muffler (if applicable) may be installed at this time; otherwise, install the quick release valve and muffler onto the equipment per the Installation section of this manual. When installing the muffler, do not forget to use Loctite ® #222 on the muffler threads and torque to 60 lb.-in. (7Nm).

3.2 Testing

- 3.2.1 Test by applying air pressure to the valve. The valve should not leak under pressure. Removing the air pressure should cause the diaphragm to shift and allow the air to exhaust through the end cap and muffler. If the valve does not function properly, repeat the servicing procedure.

Ordering information/technical assistance

- 4.1 In any correspondence regarding Airfex quick release valves, always refer to the size and port configuration and call or write:

Loctite is a registered trademark of Henkle Technologies.

Noryl is a registered trademark of The General Electric Company.

Revisions

Original publication date : October 1987

Revision date	Change	Page
November-06	—	—
April-18	Recreated Table 1 QRV Model and kit numbers with new information	3
	Added two new notes “The option and kit designation letters...” and “**** Diaphragm and end cap kit contain	3..”
	Added new text “Quick release valves supplied prior to September, 1989”	6
	Deleted information from from note “Mufflers are not factory-assembled to the quick release valves...”	6
	Added new text paragraph “Two quick release valve replacement kits are available...”	7
October-18	Updated TABLE 1: QRV Model and kit numbers	3

products we offer:

- Cartridge valves
- DCV directional control valves
- Electric converters
- Electric machines
- Electric motors
- Gear motors
- Gear pumps
- Hydraulic integrated circuits (HICs)
- Hydrostatic motors
- Hydrostatic pumps
- Orbital motors
- PLUS+1® controllers
- PLUS+1® displays
- PLUS+1® joysticks and pedals
- PLUS+1® operator interfaces
- PLUS+1® sensors
- PLUS+1® software
- PLUS+1® software services, support and training
- Position controls and sensors
- PVG proportional valves
- Steering components and systems

- Telematics

Danfoss Power Solutions is a global manufacturer and supplier of high-quality hydraulic and electric components. We specialize in providing state-of-the-art technology and solutions that excel in the harsh operating conditions of the mobile off-highway market as well as the marine sector. Building on our extensive applications expertise, we work closely with you to ensure exceptional performance for a broad range of applications. We help you and other customers around the world speed up system development, reduce costs and bring vehicles and vessels to market faster.

Danfoss Power Solutions – your strongest partner in mobile hydraulics and mobile electrification.

Go to www.danfoss.com for further product information. We offer you expert worldwide support for ensuring the best possible solutions for outstanding performance. And with an extensive network of Global Service Partners, we also provide you with comprehensive global service for all of our components.

Local address:

Hydro-Gear

www.hydro-gear.com

Daikin-Sauer-Danfoss

www.daikin-sauer-danfoss.com

Danfoss Power Solutions (US) Company 2800 East 13th Street Ames, IA 50010, USA Phone: +1 515 239 6000	Danfoss Power Solutions GmbH & Co. OHG Krokamp 35 D-24539 Neumünster, Germany Phone: +49 4321 871 0	DanfossPower Solutions ApS Nordborgvej 81 DK-6430 Nordborg, Denmark Phone: +45 7488 2222	DanfossPower Solutions Trading (Shanghai) Co., Ltd. Building #22, No. 1000 Jin Hai Rd Jin Qiao, Pudong New District Shanghai, China 201206 Phone: +86 21 2080 6201
---	---	--	---

Danfoss can accept no responsibility for possible errors in catalogues, brochures and other printed material. Danfoss reserves the right to alter its products without notice. This also applies to products already on order provided that such alterations can be made without subsequent changes being necessary. In specifications already agreed. All trademarks in this material are property of the respective companies. Danfoss and the Danfoss logotype are trademarks of Danfoss A/S. All rights reserved.





©Danfoss | September 2022



Documents / Resources

	<p>Danfoss QRV 9100 Airflex Quick Release Valve [pdf] Installation Guide</p> <p>QVR 9100 Airflex Quick Release Valve, QRV 9100, Airflex Quick Release Valve, Quick Release Valve, Valve</p>
--	---

References

-  airflex.com
-  [Daikin Sauer Danfoss - Home](#)
-  [Danfoss - Engineering Tomorrow | Danfoss](#)
-  [Hydro-Gear Drivetrain Solutions | Home](#)

Manuals+.