




Danfoss PVRE Series 2 Remote Control Unit Installation Guide

[Home](#) » [Danfoss](#) » Danfoss PVRE Series 2 Remote Control Unit Installation Guide 



Installation Guide
Remote Control Unit
PVRE Serie 2



15 7 R9954

Contents

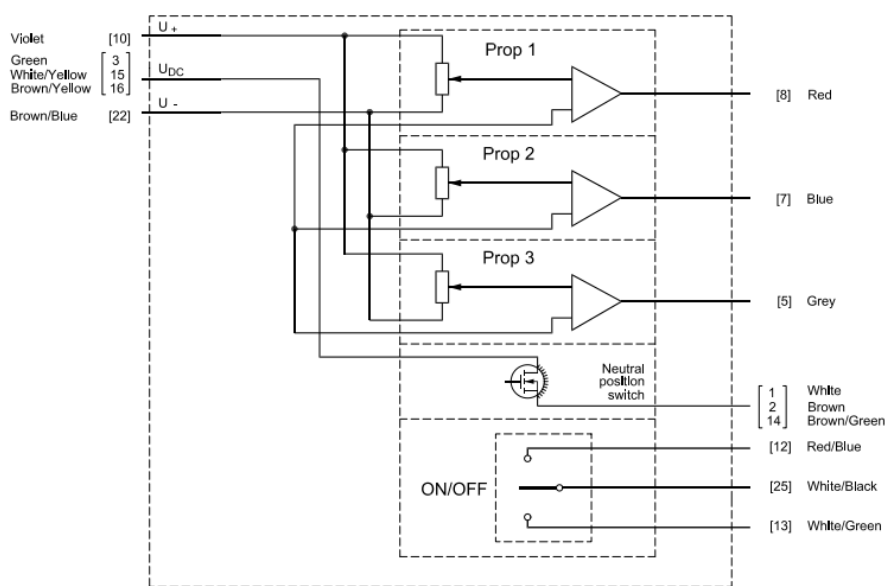
- 1 PVRE Series 2 Remote Control Unit
- 2 Dimensions
- 3 Positioning of grip
- 4 Electrical system
- 5 Accessories
- 6 Documents / Resources
 - 6.1 References

PVRE Series 2 Remote Control Unit

Code 162F....	1310 (1300)	1311 (1301)	1312 (1302)	1313 (1303)	1314 (1304)
Symbol					
Prop 1	x	x	x	x	x
Prop 2	x	x			x
Prop 3					x
ON/OFF	x		x		

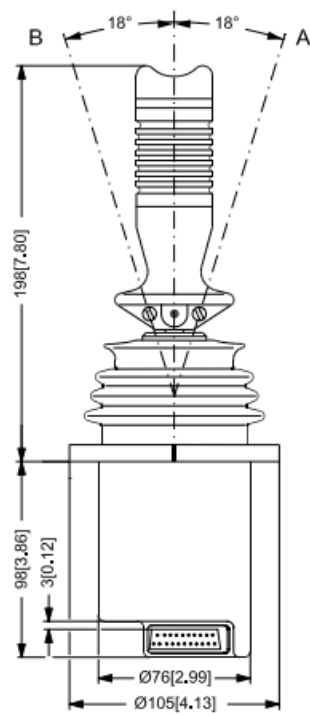
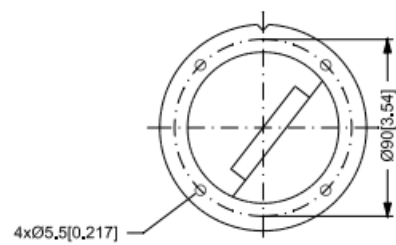
Lead colours and electrical diagram

The numbers in [] refer to the terminal numbers in the SUB-D connector of the joystick.
The indicated colours refer to the colours of the leads in Danfoss' accessory cable.



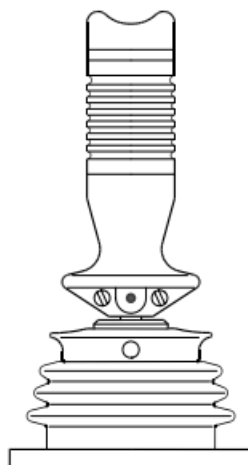
162B79.10

Dimensions

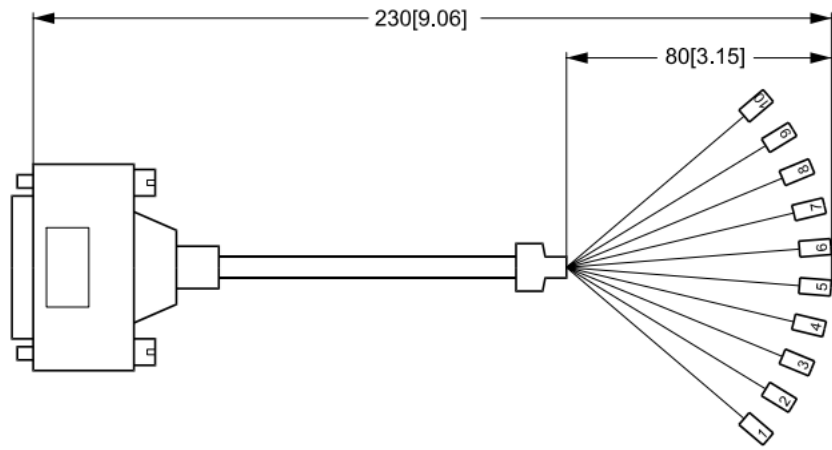


155B542.11

Positioning of grip



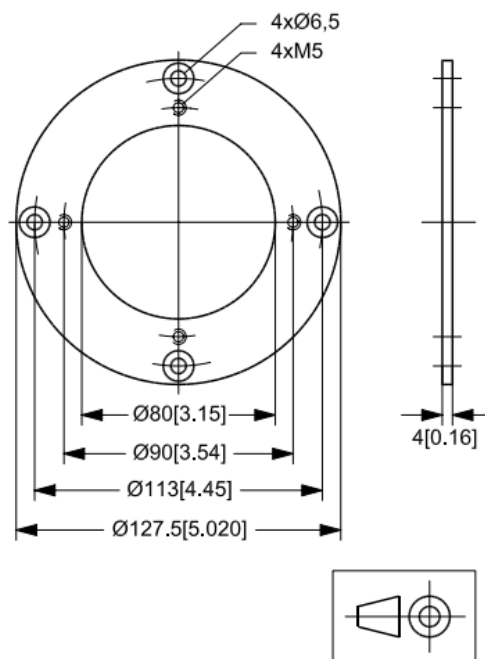
155B544.11



155B548.10

Code no. 162B6017

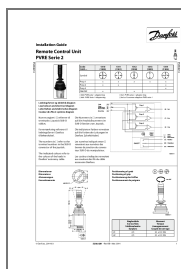
Adapter ring: Installation as PVRE series 1.



155B535.10

520L0281
Rev BB
Mar 2014
© Danfoss, 2014-03

Documents / Resources



[Danfoss PVRE Series 2 Remote Control Unit \[pdf\]](#) Installation Guide
 162F..., 162B6017, 162B4100, PVRE Series 2 Remote Control Unit, PVRE Series 2, PVRE Series 2 Remote, Remote Control Unit, Remote Control, Control Unit, Control, Remote

References

- [User Manual](#)

[Manuals+](#), [Privacy Policy](#)

This website is an independent publication and is neither affiliated with nor endorsed by any of the trademark owners. The "Bluetooth®" word mark and logos are registered trademarks owned by Bluetooth SIG, Inc. The "Wi-Fi®" word mark and logos are registered trademarks owned by the Wi-Fi Alliance. Any use of these marks on this website does not imply any affiliation with or endorsement.