




**PN 16 (DN 15-32) AV  
Control Valve Insert**



# Danfoss PN 16 (DN 15-32) AV Control Valve Insert Installation Guide

[Home](#) » [Danfoss](#) » Danfoss PN 16 (DN 15-32) AV Control Valve Insert Installation Guide 

## Contents

- [1 Danfoss PN 16 \(DN 15-32\) AV Control Valve Insert](#)
- [2 Specifications](#)
- [3 Tools Required](#)
- [4 Installation Guide](#)
- [5 Service Kit Installation](#)
- [6 Maintenance](#)
- [7 FAQs](#)
- [8 Documents / Resources](#)
  - [8.1 References](#)




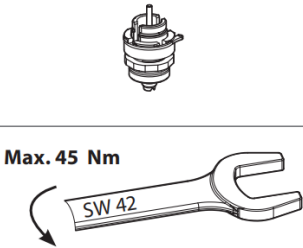
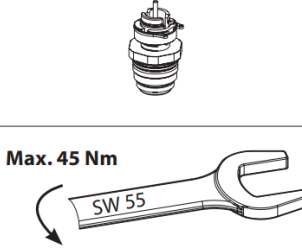
**Danfoss PN 16 (DN 15-32) AV Control Valve Insert**



## Specifications

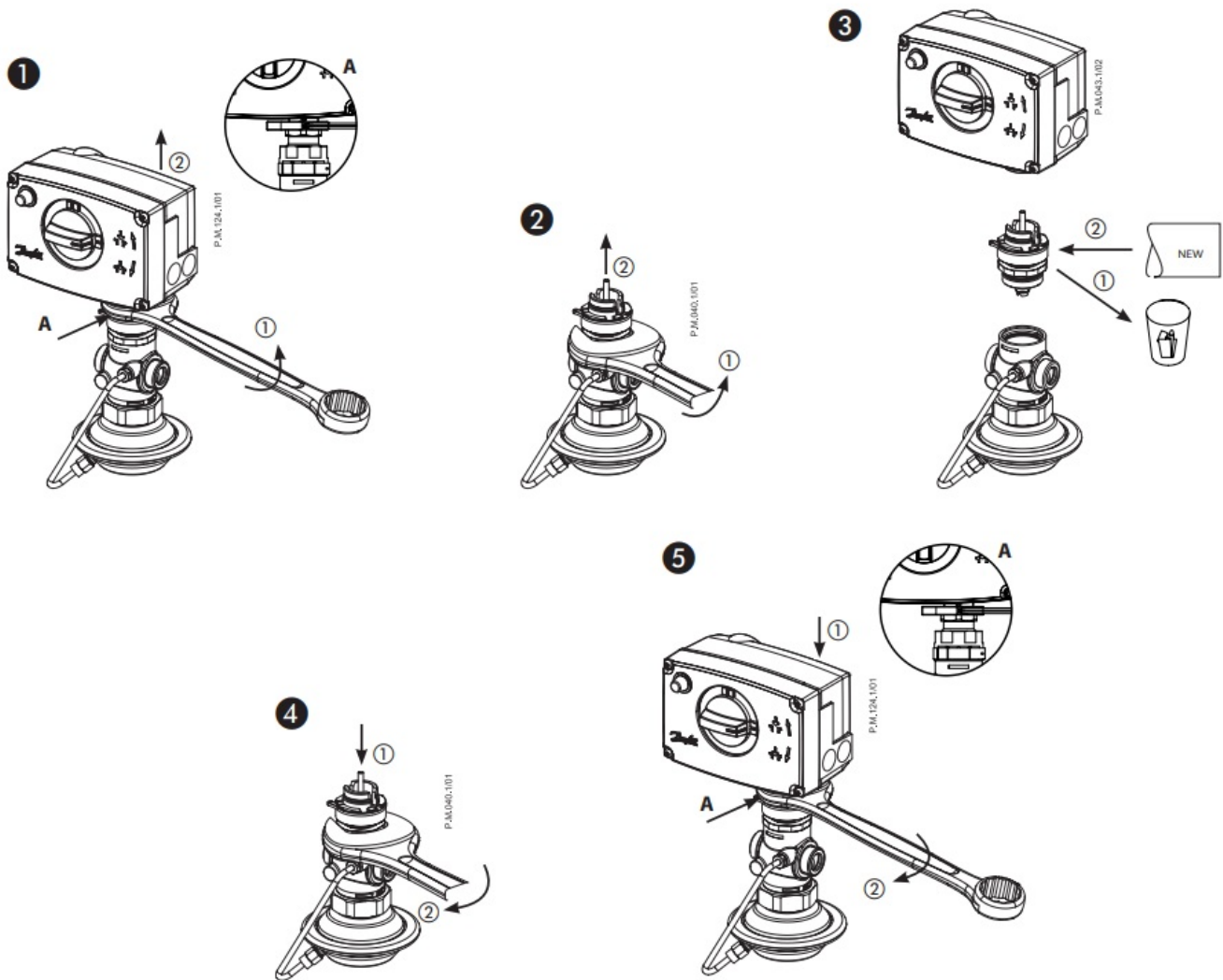
- Service kits available in PN 16 (DN 15-32) / PN 25 (DN 15-25) and PN 25 (DN 32-50)
- Max.. torque: 45 Nm for SW 42 and SW 55
- Model: AMV(E)

## Tools Required

PN 16 (DN 15-32) / PN 25 (DN 15-25)	PN 25 (DN 32-50)	 AMV(E)
 Max. 45 Nm	 Max. 45 Nm	

## Installation Guide

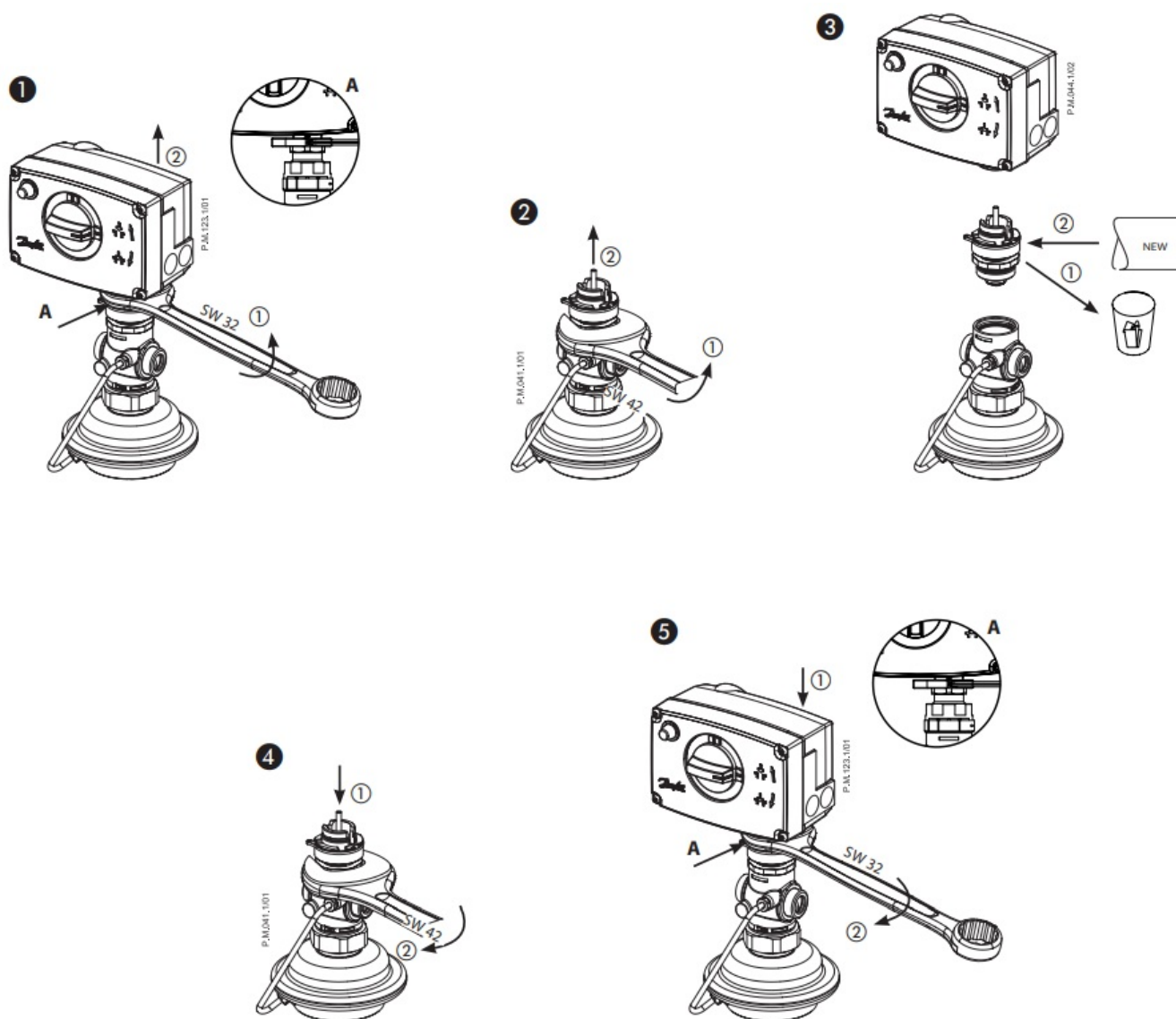
1. Ensure the appropriate service kit based on your pipe size and pressure rating.



2. Follow the provided torque specifications for tightening.

## Service Kit Installation

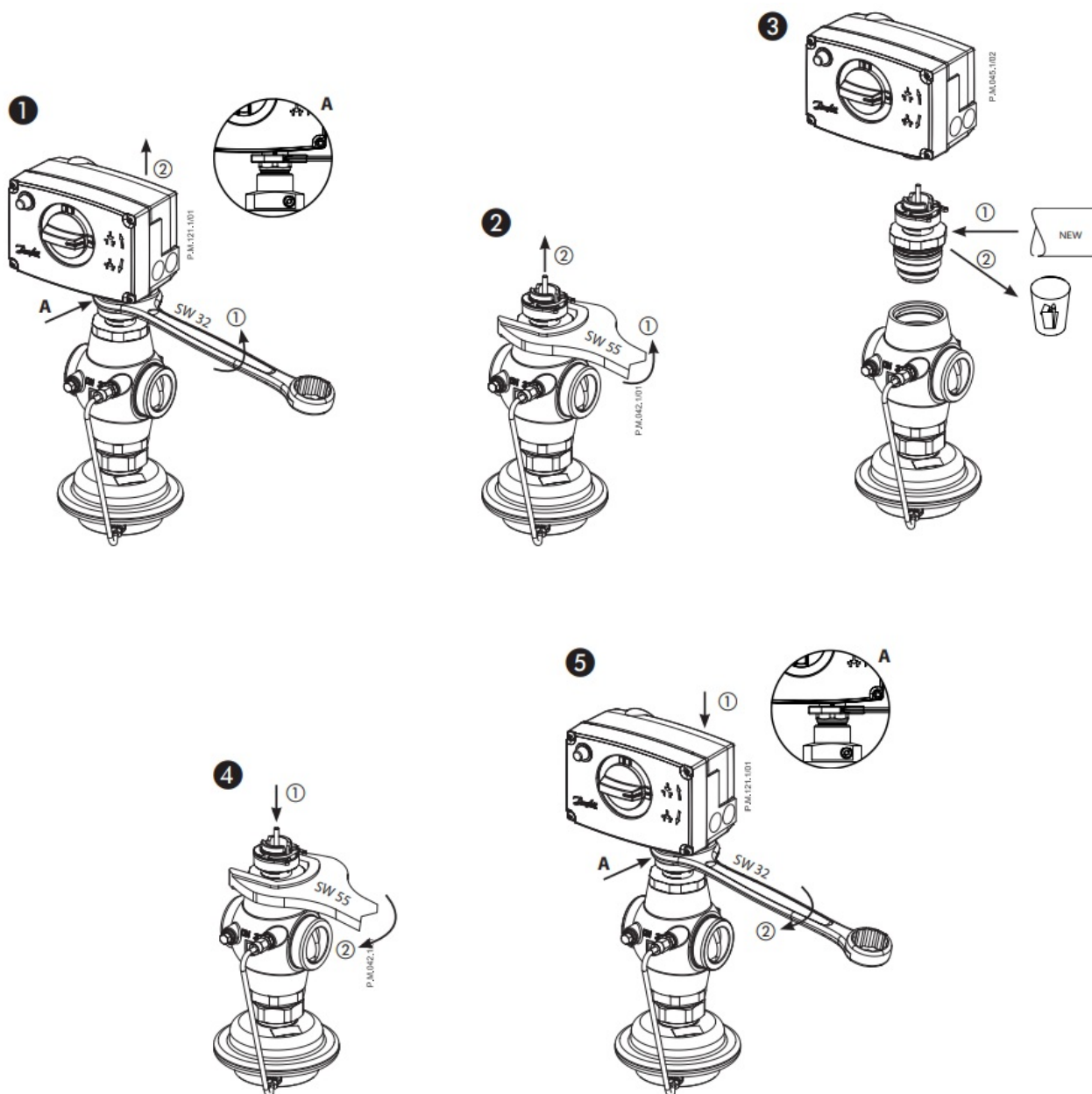
1. Identify the correct service kit for your DN range.



2. Use the specified torque values for tightening components.

## Maintenance

1. Regularly check for leaks and proper functioning after installation.



2. Refer to the user manual for any troubleshooting or maintenance tips.

Danfoss can accept no responsibility for possible errors in catalogues, brochures, and other printed material. Danfoss reserves the right to alter its products without notice. This also applies to products already on order provided that such alterations can be made without subsequent changes being necessary in specifications already agreed. All trademarks in this material are the property of the respective companies. Danfoss and the Danfoss logotype are trademarks of Danfoss A/S. All rights reserved.

## FAQs

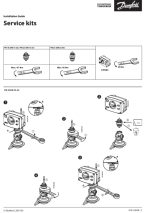
### **Q: Can I use a service kit with a different pressure rating than my system?**

A: It is recommended to use the service kit with the matching pressure rating to ensure optimal performance and safety.

### **Q: How often should I perform maintenance on the service kits?**

A: Regular maintenance checks should be conducted as per the user manual guidelines, typically at least once a year or as needed based on usage.

## Documents / Resources

	<p><a href="#">Danfoss PN 16 (DN 15-32) AV Control Valve Insert</a> [pdf] Installation Guide</p> <p>PN 16 DN 15-32, PN 25 DN 15-25, PN 25 DN 32-50, PN 16 DN 15-32 AV Control Valve Insert, P N 16 DN 15-32, AV Control Valve Insert, Control Valve Insert, Valve Insert</p>
---	--

References

- [User Manual](#)

[Manuals+](#), [Privacy Policy](#)

This website is an independent publication and is neither affiliated with nor endorsed by any of the trademark owners. The "Bluetooth®" word mark and logos are registered trademarks owned by Bluetooth SIG, Inc. The "Wi-Fi®" word mark and logos are registered trademarks owned by the Wi-Fi Alliance. Any use of these marks on this website does not imply any affiliation with or endorsement.