

Danfoss
Optyma kontroll
AK-RC Single
Phase Mounting Ki



Danfoss Optyma kontroll AK-RC Single Phase Mounting Ki Installation Guide

[Home](#) » [Danfoss](#) » Danfoss Optyma kontroll AK-RC Single Phase Mounting Ki Installation Guide 

Contents

- [1 Danfoss Optyma kontroll AK-RC Single Phase Mounting Ki](#)
- [2 Product Specifications](#)
- [3 Product Usage Instructions](#)
- [4 Mounting Kit Assembly](#)
- [5 Dimension](#)
- [6 More Information](#)
- [7 FAQ](#)
- [8 Documents / Resources](#)
 - [8.1 References](#)



Danfoss Optyma kontroll AK-RC Single Phase Mounting Ki



Product Specifications

- Product Name: Optyma™ control AK-RC Single Phase mounting kit
- Model Numbers: Danfoss 80G8242, Danfoss 80G8240, Danfoss 80G8241, Danfoss 80G8243, Danfoss 80G8282

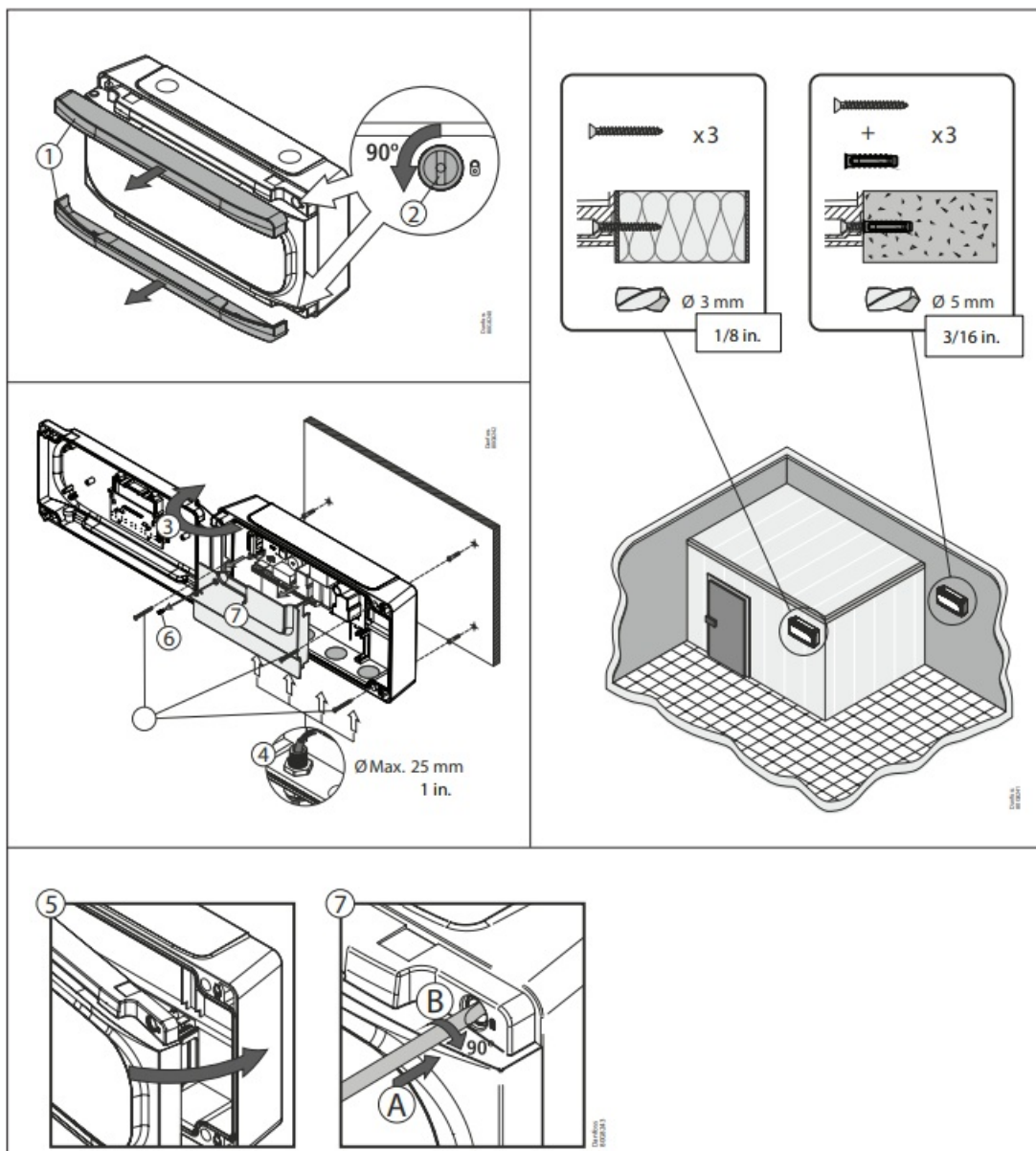
Product Usage Instructions

- Identify components A and B from the kit.
- Attach component A to component B using the provided screws (x3).
- Refer to the installation guide for proper placement and orientation.
- Use the following steps to install the Optyma™ control AK-RC Single Phase mounting kit:
- Ensure the area of installation is suitable for the dimensions of the kit.
- Securely mount the assembled kit to the designated location.
- Connect any required cables or components as per the installation guide.

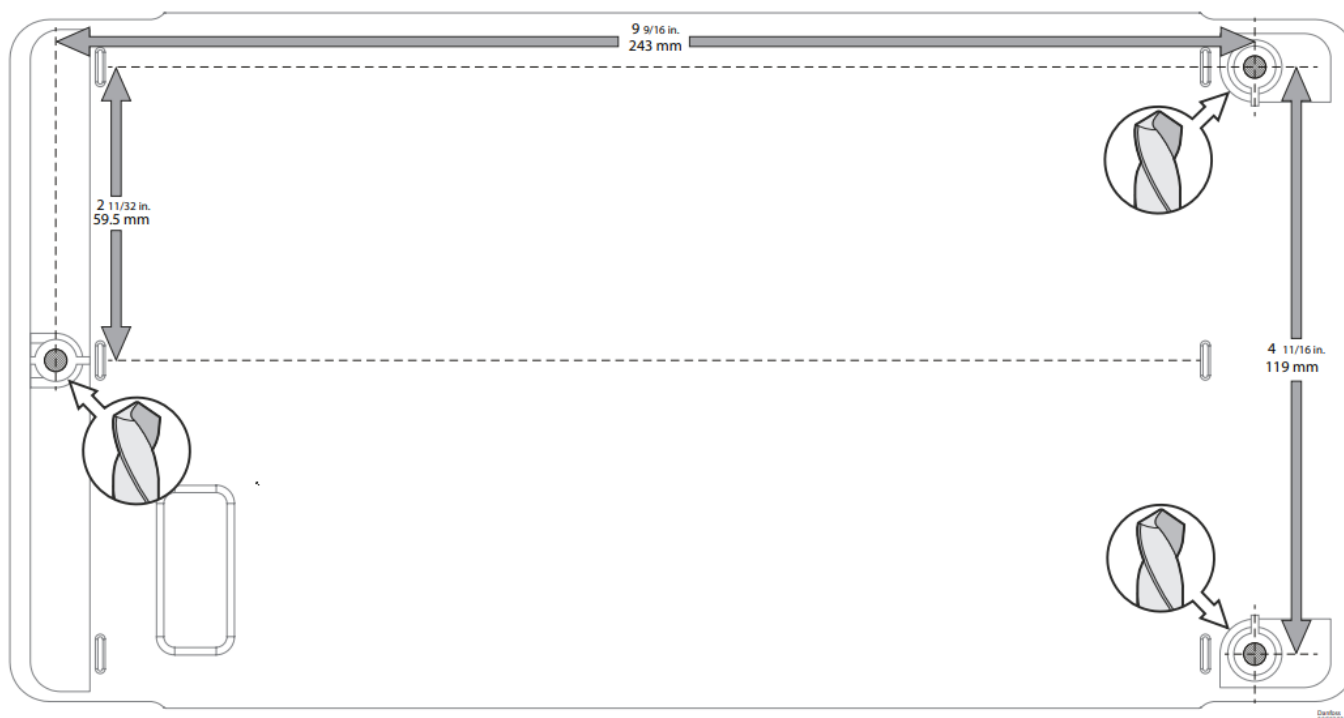
Note for Printing

- When printing any related documentation, ensure your printer is set to ACTUAL SIZE for accurate representation of dimensions.

Mounting Kit Assembly



Dimension



Note: Make sure your printer is set to ACTUAL SIZE when printing.

More Information



084R8064

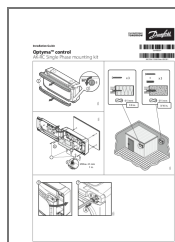


AN370611318819en-000201

FAQ

- **Q: What are the model numbers included in the Optyma™ control AK-RC Single Phase mounting kit?**
 - **A:** The kit includes the following model numbers: Danfoss 80G8242, Danfoss 80G8240, Danfoss 80G8241, Danfoss 80G8243, and Danfoss 80G8282.
- **Q: How should I ensure proper assembly of the mounting kit components?**
 - **A:** Refer to the provided installation guide for step-by-step instructions on assembling the components A and B using the provided screws.

Documents / Resources



[Danfoss Optyma kontroll AK-RC Single Phase Mounting Ki](#) [pdf] Installation Guide
Optyma kontroll AK-RC Single Phase Mounting Ki, Optyma kontroll AK-RC, Single Phase
Mounting Ki, Mounting Ki, Ki

References

- [User Manual](#)

[Manuals+](#), [Privacy Policy](#)

This website is an independent publication and is neither affiliated with nor endorsed by any of the trademark owners. The "Bluetooth®" word mark and logos are registered trademarks owned by Bluetooth SIG, Inc. The "Wi-Fi®" word mark and logos are registered trademarks owned by the Wi-Fi Alliance. Any use of these marks on this website does not imply any affiliation with or endorsement.