

Danfoss

**Online
Cylinder
CAD
Configurator**



Danfoss Online Cylinder CAD Configurator User Guide

[Home](#) » [Danfoss](#) » Danfoss Online Cylinder CAD Configurator User Guide 

Contents

- [1 Danfoss Online Cylinder CAD Configurator](#)
- [2 Product Information](#)
- [3 Product Usage Instructions](#)
- [4 Frequently Asked Questions](#)
- [5 MODELS](#)
- [6 Danfoss Cylinder Products and Markets](#)
- [7 Online CAD Configurator User Guide](#)
- [8 Links to Catalogs and Configurators](#)
- [9 Registration & Login](#)
- [10 Online CAD Configurator- Ordering](#)
- [11 Export Data Sheet](#)
- [12 Documents / Resources](#)
 - [12.1 References](#)
- [13 Related Posts](#)

Danfoss

Danfoss Online Cylinder CAD Configurator



Product Information

Specifications

- **Bore Size:** up to 60
- **Stroke:** up to 20 meters
- **Pressure:** up to 660 bar
- **Metric** and Imperial designs

Product Usage Instructions

Registration & Login

If this is your first time using the CAD configurator, follow these steps:

1. Set up a new account if visiting for the first time.
2. If you have an existing account, select the Login button.

Fill out the required information. Pricing access is not granted to personal email accounts. Contact your Customer Support Representative for pricing access after registration.

Quoting Process

1. After initial login, use the Login button to start the quoting process.
2. Enter your email and password, then select the Login button.

Standard Cylinder or Parts

1. Enter information for the cylinder and select Enter.
2. The quote will display cylinder details, pricing breakdown, and an option to add to the cart.
3. Hit Add to Cart when ready to proceed.

Ordering Process

1. Update the Cart to modify your order.
2. Clear the Cart to empty and start over.
3. The checkout button takes you to the checkout section for order completion.
4. Review and complete Sold to, Ship to, Quote or Order type, PO #, shipping company, comments, and final order review before completing.

Custom Cylinders

1. Search for a specific part number in the search box and select Find Cylinder.
2. If found, view the information on the right side of the screen.

Frequently Asked Questions

How do I gain pricing access?

Contact your Customer Support Representative (CSR) after registration if you do not have pricing access.

Can I make changes to my order?

Yes, use the Update Cart option to modify your order before checkout.

What should I do if I can't find a specific cylinder?

Contact customer support for assistance if you are unable to locate a specific cylinder in the search results.

MODELS



Danfoss Cylinder Products and Markets

Type	Description	Product
Tie Rod	Heavy Duty NFPA	N5, NZ
	Heavy Duty Large Bore	HG, VG
	Heavy Duty ISO 6020-2 / Din 25554	IHM, TV
	Medium Duty NFPA	R5, RE
	Light Duty Pneumatics	VP/Q6, L
Threaded	Threaded Construction	TS, TA
Welded	Industrial Welded	HW, WH
Mill	Mill Duty	EM, IM
SL	Extra Large Customs	XL Custom

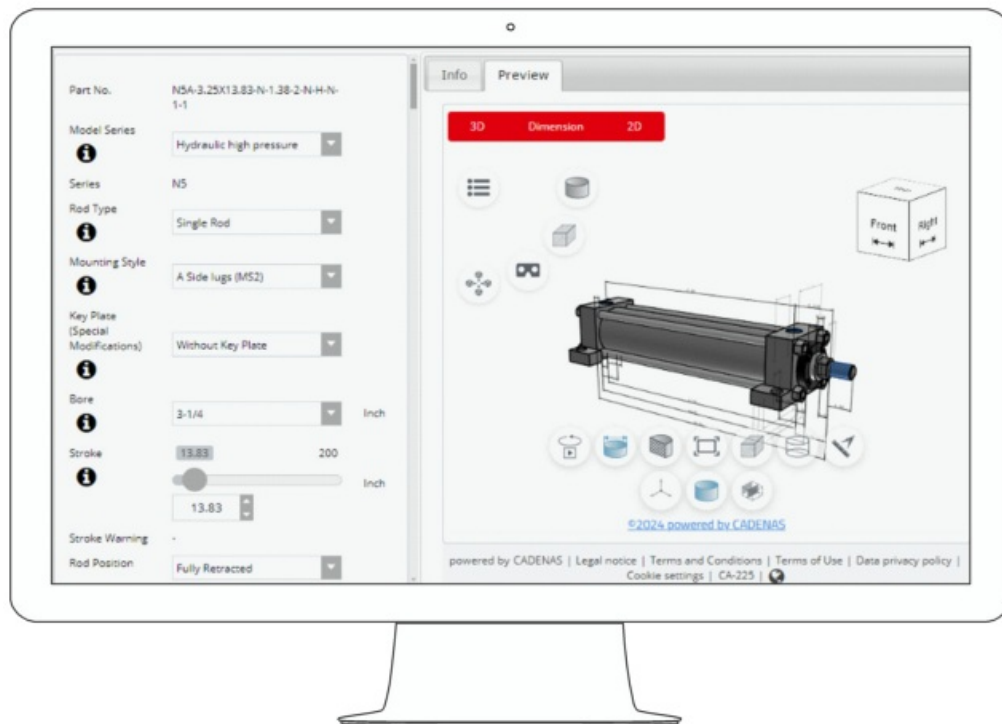
- **Bore Size:** up to 60"
- **Stroke:** up to 20 meters
- **Pressure:** up to 660 bar
- **Metric** and Imperial designs



Online CAD Configurator User Guide

Our easy-to-use, mobile-friendly cylinder configurator provides on-demand access to:

- 2D & 3D drawings
- PDF datasheets
- Application guides
- Calculation tools
- Activation is needed for pricing after approval of the request.



Links to Catalogs and Configurators

HEAVY-DUTY TIE ROD NFPA CYLINDERS



- [Hydro-Line N5 series \(Catalog\)](#)
- [Hydro-Line HG series \(Catalog\)](#)
- [Vickers by Danfoss NZ series \(Catalog\)](#)
- [Vickers by Danfoss VG series \(Catalog\)](#)

MEDIUM-DUTY TIE-ROD NFPA CYLINDERS

- [Hydro-Line R5/HR5 series \(Catalog\)](#)
- [Vickers by Danfoss RE/RF series \(Catalog\)](#)

ELECTROHYDRAULIC TIE-ROD CYLINDERS



- [Danfoss EH series \(Catalog\)](#)

WELDED CYLINDERS



- [Danfoss WH Series \(Catalog\)](#)

MILL-DUTY CYLINDERS



- [Danfoss Imperial EM series \(Catalog\)](#)
- [Danfoss IM Series \(Catalog\)](#)

THREADED CYLINDERS



- [Hydro-Line TS/HTS series \(Catalog\)](#)
- [Vickers by Danfoss TA/TB series](#)

Registration & Login

Configure & CAD **New Account** **Login**

Part Number Configurator

Search by PN **Find Cylinder**

Part No.

Series

Bore Inch

Mounting Style

Rod Size Inch

Cushion Position (Rod End)

Cushion Position (Blind End)

Rod End Type

Rod End Style (Cap)

Piston Seal Type

Info **Preview**

TA	Brand	Vickers by Danfoss	Request quote for pricing
01	Series	Spacemaker Air	
F	Mounting style	Foot	
A	Bore	2 1/2"	
B	Cushions	Rod end: - Blind end: -	
A	Rod end	Rod diameter: 3/4" Type end: 4	
I	Seals	Type: U Cup Material: Nitrile (Buna-N)	
A	Port size	NPT	
A	Port location	Rod end: 1 Blind end: 1	
001	Limit switch	None	
00	Stroke	0-1/16"	
	Extra Rod projection	0"	

Configure a cylinder and request a quote from anywhere in the world.

1. If this is the first time visiting the CAD configurator you must set up a new account.
2. If you have an account already select the Login button.

Configure & CAD **New Account** **Login**

Account Login
Revised 10/07/2022

Please enter your Email Address:

Do you already have an account?

☐ Yes, my password is: Remember me? ☒

☐ Yes, but I forgot my password

☒ No, please sign me up as a new user

Create new account

New Account

By filling out the form below, I understand and agree that any use of my personal data will take place in compliance with the relevant and applicable data privacy laws and the [Danfoss Privacy Policy](#).

* **Company Name**

* **First/Last Name**

Address

* **City**

* **State**

* **ZIP Code**

* **Country**

* **Email**

Auto login? ☐ (Automatic access if last successful login was from the same browser on the same desktop)

* **Password (6-20 characters)** (Show) (Create random password)

* **Confirm password** (Show)

CAD format

☐ Opt-in to Cylinders Marketing

I agree to be informed regularly about Danfoss products, promotions and news. I understand and agree that Danfoss will use my data to personalize marketing communications. Any use of my personal data will take place in compliance with the relevant and applicable data privacy laws and the [Danfoss Privacy Policy](#). I can withdraw my consent to receive marketing communications at any time by contacting Danfoss.

* ☐ CADENAS CAD Terms and Conditions

I agree to [CADENAS CAD Terms and Conditions](#). I hereby consent to the processing (collection, storage and use) of my personal data according to the data protection declaration and the data protection notice made known to me. I have read the terms of use of the PARTcommunity forum and hereby also declare my consent.

* Indicates mandatory fields

[Create Account](#)

- Fill out the required information. Pricing access will not be granted to personal email accounts.
- **Note:** If you are just signing up or do not have access to pricing, you must send an email to your Customer Support Representative (CSR) to gain pricing access.
- Please refer to the Login instructions following registration.

Configure & CAD **New Account** **Login**

Part Number Configurator

Search by PN [Find Cylinder](#)

Part No.

Series

Bore Inch

Info **Preview**

Brand **WH** Series Industrial Welded Cylinders Request quote for pricing

Mounting **10** Cap Clevis Mount

Bore & Rod Diameter **GH** 3-1/4" Bore, 1-3/8" Rod

End End Type Small Male UN Thread

Vickers by Danfoss WH Series Cylinder Configurator

Account Login*Revised 10/07/2022***Please enter your Email Address:**

2

Do you already have an account?

- ☒ Yes, my password is: Remember me? ☒
- ☐ Yes, but I forgot my password
- ☐ No, please sign me up as a new user

3

4

1. After initial Login during registration, you will need to use the Login button shown to start the process of quoting.
2. Enter your email
3. Enter your password
4. Select the Login button.

Online CAD Configurator User Guide-Standard Cylinder or Parts**Pricing & Lead Time**

Enter		
SKU	<input type="text" value="Enter SKU or Speed Number"/>	
Quantity	<input type="text" value="1"/>	
Enter		

This page is the beginning of whatever you are starting to quote. If you have a standard cylinder you can go to the Pricing & Lead Time. The below screen is what you will see.

Pricing & Lead Time

Enter

SKU

Enter SKU or Speed Number

Quantity

1

Enter

Pricing & Lead Time

Enter Price & Leadtime Cart View

SKU

RF10GE5N1KA10000

Quantity

1

Enter

1. There are several options for the information that can go into the box. Standard part numbers that do not have an "X" in the part number, some Design Codes you will be able to quote along with Accessories.
2. The discount will auto-populate when you select the "Enter" button.
3. Select the Enter button.

Enter Price & Leadtime Cart View

RF	Brand	Vickers by Danfoss	Price Components	
10	Series	1500 PSI Medium Duty Hydraulic	Base Price	\$713.00
GE	Mounting	Cap Fixed Clevis	Stroke	\$176.00
5	Bore & Rod Diameter	3-1/4" Bore, 1" Rod	(10" Gross Stroke @ \$17.60)	
N	Rod End Type	Small male UN Thread	List Price	\$889.00
1	Seal Options	Normal	Less 35.00% Discount	\$311.15
K	Port Options	NPTF	Net Price	\$577.85
A	Port Location	Head: 1 Cap: 1		
100	Cushion Location	Head: - Cap: -		
	Cylinder Stroke	10"		

Normally ships in 5 business day(s)

Discount shown will only apply if the order is completed online or the quote is saved through the configurator. Standard discount to be applied otherwise.

Comment:
Optional comment or instructions

Add to Cart

Enter
Price & Leadtime
Cart View
4

RF
10
GE
S
N
1
K
A
100

Brand
Series
Mounting
Bore & Rod Diameter
Rod End Type
Seal Options
Port Options
Port Location
Cushion Location
Cylinder Stroke

Vickers by Danfoss
1500 PSI Medium Duty Hydraulic
Cap Fixed Clevis
3-1/4" Bore, 1" Rod
Small male UN Thread
Normal
NPTF
Head: 1 Cap: 1
Head: - Cap: -
10"

Region: North America

Price Components
Base Price \$713.00
Stroke \$176.00
(10" Gross Stroke @ \$17.60)
List Price \$889.00
Less 35.00% Discount \$311.15
Net Price \$577.85

Normally ships in 5 business day(s)

Discount shown will only apply if the order is completed online or the quote is saved through the configurator. Standard discount to be applied otherwise.

Comment:
Optional comment or instructions

Add to Cart

- The first part of the quote will give you the information you entered for the cylinder. You can go back to the Enter button to make changes to the cylinder part number.
 - A catalog with information regarding each selection on the cylinder part number is located on slide 5.
- The second section is a breakdown of the prices associated with the cylinder.
- The final section allows you to add the cylinder to your cart for checkout. More on ordering in later slides.
- The cart view gives you more of a direct look at the information you selected.

Pricing & Lead Time

Part #/Description	Quantity	List Price	Discount%	Net Price
RF10GE5N1KA10000 (Get CAD) <ul style="list-style-type: none"> Brand: Vickers by Danfoss Series: 1500 PSI Medium Duty Hydraulic Mounting: Cap Fixed Clevis Bore & Rod Diameter: 3-1/4" Bore, 1" Rod Rod End Type: Small male UN Thread Seal Options: Normal Port Options: NPTF Port Location: Head: 1 Cap: 1 Cushion Location: Head: - Cap: - Cylinder Stroke: 10" Normally ships in 5 business day(s)	1	\$889.00	35.00%	\$577.85

Discount shown will only apply if the order is completed online or the quote is saved through the configurator. Standard discount to be applied otherwise.

Pricing & Lead Time

Enter
Price & Leadtime
Cart View

RF
10
GE
S
N
1
K
A
100

Brand
Series
Mounting
Bore & Rod Diameter
Rod End Type
Seal Options
Port Options
Port Location
Cushion Location
Cylinder Stroke

Vickers by Danfoss
1500 PSI Medium Duty Hydraulic
Cap Fixed Clevis
3-1/4" Bore, 1" Rod
Small male UN Thread
Normal
NPTF
Head: 1 Cap: 1
Head: - Cap: -
10"

Region: North America

Price Components
Base Price \$713.00
Stroke \$176.00
(10" Gross Stroke @ \$17.60)
List Price \$889.00
Less 35.00% Discount \$311.15
Net Price \$577.85

Normally ships in 5 business day(s)

Discount shown will only apply if the order is completed online or the quote is saved through the configurator. Standard discount to be applied otherwise.

Comment:
Optional comment or instructions

Add to Cart

- When you are ready to add to the cart you will hit the "Add to Cart".

Online CAD Configurator- Ordering

An embedded page at danfoss.scscpq.com says

Add RF10GE5N1KA10000 to cart?

OK

Cancel

Next, you would either Update the Cart or Remove it from the Cart

Enter

Price & Leadtime

Cart View

<div>RF</div>	Brand	Vickers by Danfoss	<div>Region: North America</div> <div><div>Price Components</div><table><tr><td>Base Price</td><td>\$713.00</td></tr><tr><td>Stroke</td><td>\$176.00</td></tr><tr><td colspan="2">(10" Gross Stroke @ \$17.60)</td></tr><tr><td>List Price</td><td>\$889.00</td></tr><tr><td>Less 35.00% Discount</td><td>\$311.15</td></tr><tr><td>Net Price</td><td>\$577.85</td></tr></table></div> <div>Normally ships in 5 business day(s)</div> <div>Discount shown will only apply if the order is completed online or the quote is saved through the configurator. Standard discount to be applied otherwise.</div> <div>Comment: Optional comment or instructions</div> <div><div>Update Cart</div><div>Remove from Cart</div></div> <div>Added RF10GE5N1KA10000</div>	Base Price	\$713.00	Stroke	\$176.00	(10" Gross Stroke @ \$17.60)		List Price	\$889.00	Less 35.00% Discount	\$311.15	Net Price	\$577.85
Base Price	\$713.00														
Stroke	\$176.00														
(10" Gross Stroke @ \$17.60)															
List Price	\$889.00														
Less 35.00% Discount	\$311.15														
Net Price	\$577.85														
<div>10</div>	Series	1500 PSI Medium Duty Hydraulic													
<div>GE</div>	Mounting	Cap Fixed Clevis													
<div>5</div>	Bore & Rod Diameter	3-1/4" Bore, 1" Rod													
<div>N</div>	Rod End Type	Small male UN Thread													
<div>1</div>	Seal Options	Normal													
<div>K</div>	Port Options	NPTF													
<div>A</div>	Port Location	Head: 1 Cap: 1													
<div>100</div>	Cushion Location	Head: - Cap: -													
	Cylinder Stroke	10"													

An embedded page at danfoss.scscpq.com says

Remove RF10GE5N1KA10000 from cart?

OK

Cancel

Configure & CAD

Dashboard

My Account

RFQ/Order Cart (1)

Logoff

Shopping Cart

Del?	Line#	Part #/Description	Quantity	List Price	Discount%	Net Price
<input type="checkbox"/>	1	RF10GE5N1KA10000 (Get CAD) <ul style="list-style-type: none">Brand: Vickers by DanfossSeries: 1500 PSI Medium Duty HydraulicMounting: Cap Fixed ClevisBore & Rod Diameter: 3-1/4" Bore, 1" RodRod End Type: Small male UN ThreadSeal Options: NormalPort Options: NPTFPort Location: Head: 1 Cap: 1Cushion Location: Head: - Cap: -Cylinder Stroke: 10" Normally ships in 5 business day(s) Comment: Optional comment or instructions	<input type="text" value="1"/>	\$889.00	35.00%	\$577.85

Discount shown will only apply if the order is completed online or the quote is saved through the configurator. Standard discount to be applied otherwise.

Update Cart

Check Out

Clear Cart


1

3

2

1. The Update Cart will allow you to change your order.
2. The Clear Cart will empty the cart and you can start over.

3. The checkout button will take you to a checkout section that you will need to fill out.

<https://danfoss.com>

Sold To
Company Name Danfoss
Name Dean Sieler
Address 1
City Jackson
State/Province Michigan
Zip/Postal Code 49202
Country United States
Email dean.sieler@danfoss.com

Ship To
*Company Name Danfoss
*Name Dean Sieler
*Address 1
*City Jackson
*State Michigan
*ZIP Code 49202
*Country United States
*Indicates mandatory fields

Type	PO#	Ship Via	Comment
<div>3</div>	<div>4</div>	<div>5</div>	<div>6</div>

Line#	Part #/Description	Quantity	List Price	Discount%	Net Price
1	RF10GE5N1KA10000 (Get CAD) <ul style="list-style-type: none">• Brand: Vickers by Danfoss• Series: 1500 PSI Medium Duty Hydraulic• Mounting: Cap Fixed Clevis• Bore & Rod Diameter: 3-1/4" Bore, 1" Rod• Rod End Type: Small male UN Thread• Seal Options: Normal• Port Options: NPTF• Port Location: Head: 1 Cap: 1• Cushion Location: Head: - Cap: -• Cylinder Stroke: 10" Normally ships in 5 business day(s)	1	\$889.00	35.00%	\$577.85

Discount shown will only apply if the order is completed online or the quote is saved through the configurator. Standard discount to be applied otherwise.

Review >>

7

1. First section make sure the Sold to information is correct.
2. Ship to information complete.
3. Select type "Quote or Order".
4. PO # added.
5. The shipping company you want to use.
6. Any comments you want to add to the order?
7. Review the order and select Complete if everything is correct.

Online CAD Configurator User Guide-Custom Cylinders

Part Number Configurator

1. You can put the part number in the search box and select “Find Cylinder”. If the cylinder is found, you will see the information on the right side of the screen.
2. You can also build the cylinder with what you want in the section on the left. As you change selections on the left the information on the right will update in real time.
3. Once you have completed the cylinder to what you want select the Add to Cart button and follow the same instructions as in the previous section.
4. Additional information is available by selecting the black circles with, a brief pop-up up will explain what is available.

1. Put an Accessory part number in the SKU box.
2. Discount will auto-populate when you select enter.
3. Select Enter to see the price of the item.

Enter
Speed Number
Cart View

Speed Number	FRC-1500-10
Brand(s)	Danfoss
Description	ROD CLEVIS ASSY

List Price	\$349.50
Less 35.00% Discount	\$122.33
Net Price	\$227.17

Normally ships in 5 business day(s)

Discount shown will only apply if the order is completed online or the quote is saved through the configurator. Standard discount to be applied otherwise.

Comment:

Optional comment or instructions

Add to Cart

4

4. Add to the cart and follow the same instructions in the previous section to complete the purchase.

Export Data Sheet

Select CAD & Preview for Specs sheet, same process for all options.

Part Number Configurator

Search by PN Find Cylinder

Part No.
Series
Bore Inch
Mounting Styles
Working Stroke 180
Inch
Gross Stroke (Working Stroke) Inch

Info CAD & Preview Calculations Calculations Help

Brand	Vickers by Danfoss	Price Components
NZ Series	ANSI B93.15/NFPA Interchangeable Hydraulic cylinder	Base Price \$1,064.00
01 Mounting Style	Side Lug	Seal options \$0.00
GH Bore & Rod Diameter	3-1/4" Bore, 1-3/8" Rod	Cushions \$0.00
S Rod End Type	Small Male UN Thd.	Stroke \$21.10
N Seal Options	Normal	(1" Gross Stroke @ \$21.10)
1 Port Options	Standard NPTF (Not recommended for maximum reliability on new applications)	Port options \$0.00
K Port Location	Head: 1 Cap: 1	List Price \$1,085.10
A Cushion Location	Head: - Cap: -	Normally ships in 5 business day(s)
001 Cylinder Stroke	0-1/16"	Comment:
		Optional comment or instructions
		Add to Cart

Part Number Configurator

Select Download for PDF datasheet

Search by PN [Find Cylinder](#)

Part No.

Series

Bore Inch

Mounting Styles

Working Stroke 180 Inch

Gross Stroke (Working Stroke + Stop Tube Length) Inch

Rod Position

Rod Position Stroke

Rod Size Inch

Rod End Type

Info CAD & Preview Calculations Calculations Help

[Download CAD](#) [Download PDF datasheet](#)

NZ01GH5N1KA00100_ZR00 (PDF)

[Download](#) [Information](#) [Delete](#)

3D Dimension 2D

Downloads

[DANFOSS HYDRAULICS NZ01GH5N1KA00100ZR00 \(2\)...](#)

[Open file](#)

Click on Open file

[NZ01GH5N1KA00100_ZR00.pdf](#)

Adobe Acrobat Document

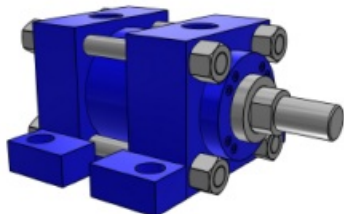
Double click pdf file

Vickers® by Danfoss Cylinders

Heavy-Duty Small Bore Series NZ

Danfoss Power Solutions
14615 Lone Oak Road
Eden Prairie, MN 55344
USA
Tel: 952-937-9800
www.danfoss.com

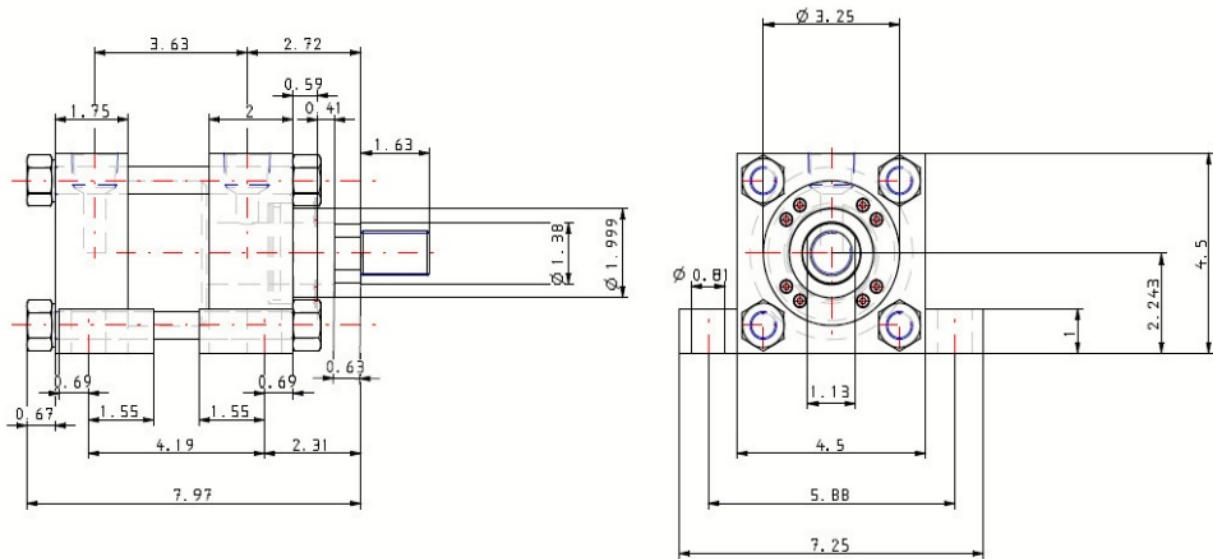
Part Number: NZ01GH5N1KA00100



Series	NZ
Mounting Styles	Side lug (MS2)
Bore (INCH)	3-1/4
Rod Size (INCH)	1-3/8
Working Stroke (INCH)	0.0625
Rod Position	Fully Retracted
Rod Position Stroke (INCH)	0
Extra Rod Projection (INCH)	0
Rod End Type	Small Male UN Thd.
Rod Thread	1-14 INCH
Rod Thread Length	1.63 INCH
Tapped Thread Spec.(INCH)	N/A
Tie Rod Thread Spec.(INCH)	N/A
Seal Options	Normal
Port Options	Standard NPTF
Port Size	3/4 INCH
Port Locations (Head)	1
Port Locations (Cap)	1
Cushion Location (Head)	-
Cushion Location (Cap)	-
Pull Pressure (PSI)	3000
Push Pressure (PSI)	3000

Spec Sheet

2D Drawing



THE REPRODUCTION, DISTRIBUTION, AND UTILIZATION OF THIS DOCUMENT AS WELL AS THE COMMUNICATION OF ITS CONTENTS TO OTHERS WITHOUT EXPLICIT AUTHORIZATION IS PROHIBITED. OFFENDERS WILL BE HELD LIABLE FOR THE PAYMENT OF DAMAGES. ALL RIGHTS RESERVED IN THE EVENT OF THE GRANT OF A PATENT, UTILITY MODEL, OR DESIGN. (PER ISO 15016)	<p>Part Position</p>	<p>UNLESS OTHERWISE SPECIFIED</p> <p>All Dimensions noted in inches unless otherwise specified. Dimensioning per ANSI Y14.5 Work to dimensions & DO NOT SCALE PRINT</p>	<p>THIRD ANGLE PROJECTION</p>	<p>DWG. NO.: NZ01GH5N1KA00100</p>	<p>DWG. TITLE: CYLINDER ASSEMBLY</p>

Spec Sheet


Part No.	NZ01GH5N1KA00100
Series	NZ
Bore	3-1/4 INCH
Mounting Styles	01 Side Lug (MS2)
Working Stroke	0.0625 INCH
Gross Stroke (Working Stroke + Stop Tube Length)	0.0625 INCH
Rod Position	Fully Retracted
Rod Position Stroke	0
Rod Size	1-3/8 INCH
Rod End Type	5 Small Male UN Thd.
Seal Options	Normal
Port Options	Standard NPTF
Port Locations (Head)	1
Port Locations (Cap)	1
Cushion Location (Head)	Without Cushion
Cushion Location (Cap)	Without Cushion
Extra Rod Projection	0 INCH
No. of A/C Flat	Standard Flats
Gland Drain Selection	Without Gland Drain
Gland Drain Location (Head)	N/A
Gland Drain Location (Cap)	N/A
Proximity Switch	Without Proximity Switch
Proximity Switch Location (Head)	N/A
Proximity Switch Location (Cap)	N/A
Air Bleed	Without Air Bleed
Air Bleed Location (Head)	N/A
Air Bleed Location (Cap)	N/A
Note for Side Lug / Side End Lug position 3 (bottom) feature	-
Stop Tube	Without Stop Tube
Stop Tube Length	0 INCH
Stop Tube note	-
Specify XV Dimension (Only Mounting Style NZ15 or NZ34)	0 INCH
Keyed Piston to Rod	Without Keyed Piston to Rod
Rod Material	Standard
Head End Accessories	Without Head End Accessories
Head End Accessory Attachments	N/A
Head End Self Aligning Coupler	Without Self-Aligning Coupler
Head End Rod End Coupling	N/A
Cap End Accessories	N/A
Cap End Accessory Attachments	N/A
Cap End Self Aligning Coupler	N/A
Cap End Rod End Coupling	N/A

For questions, please contact your CSR. Call 8882580222 option #1, option #4



- **Danfoss Power Solutions, Nordborgvej 81, 6430 Nordborg, Denmark**
- **Tel. +45 74 88 22 22,**
- **Fax +45 74 65 25 80 www.danfoss.com,**
- **E-mail: info@danfoss.com**
- Any information, including, but not limited to information on the selection of the product, its application or use, product design, weight, dimensions, capacity, or any other technical data in product manuals, catalog descriptions, advertisements, etc., and whether made available in writing, orally, electronically, online or via download, shall be considered informative and is only binding if and to the extent, explicit reference is made in a quotation or order confirmation.
- Danfoss cannot accept any responsibility for possible errors in catalogs, brochures, videos, and other material. Danfoss reserves the right to alter its products without notice.
- This also applies to products ordered but not delivered provided that such alterations can be made without changes to the form, fit, or function of the product.

- All trademarks in this material are property of Danfoss A/S or Danfoss group companies.
- Danfoss and the Danfoss logo are trademarks of Danfoss A/S.
- © 2023 Danfoss. All Rights Reserved
- BC456173863663en-000203

Documents / Resources

	<p>Danfoss Online Cylinder CAD Configurator [pdf] User Guide Online Cylinder CAD Configurator, Online, Cylinder CAD Configurator, CAD Configurator, Configurator</p>
---	--

References

-  [Engineering Tomorrow | Danfoss](#)
-  [SegmentTools](#)
- [User Manual](#)

[Manuals+](#), [Privacy Policy](#)

This website is an independent publication and is neither affiliated with nor endorsed by any of the trademark owners. The "Bluetooth®" word mark and logos are registered trademarks owned by Bluetooth SIG, Inc. The "Wi-Fi®" word mark and logos are registered trademarks owned by the Wi-Fi Alliance. Any use of these marks on this website does not imply any affiliation with or endorsement.