



Danfoss OFC Check Valve Installation Guide

[Home](#) » [Danfoss](#) » Danfoss OFC Check Valve Installation Guide 

Danfoss OFC Check Valve



Contents

- [1 Refrigerant](#)
- [2 Media Temperature](#)
- [3 Max. Working Pressure](#)
- [4 Contents of accessory box](#)
- [5 Interface Connections](#)
- [6 Outlet Flange Brazing](#)
- [7 Orientation](#)
- [8 When changing check valve spring](#)
- [9 Documents / Resources](#)
 - [9.1 References](#)
- [10 Related Posts](#)

Refrigerant

For a complete list of approved refrigerants, visit <http://store.danfoss.com/> and search for individual code numbers, where refrigerants are listed as part of product details. Oil: OFC valve is designed for an oil-free environment

Media Temperature

Min. 0 C / 32 F

Max. 90 C / 194 F, short term up to 100 C / 212 F

Max. Working Pressure

PS/MWP = 23 bar / 334 psig

Contents of accessory box

- Outlet flange for 3 1/8 in. copper tube
- Outlet flange fasteners
- O-ring for outlet flange
- O-ring lubrication (2 gram)
- Additional check valve springs (2 pcs):
 - Yellow spring, for 45 down orientation
 - Red spring, for horizontal orientation

Interface Connections

Install valve directly on Danfoss Turbocor compressor, picture shown with vertical down installation. All fasteners and bolts require stainless steel. Bolts with minimum class A2-70.



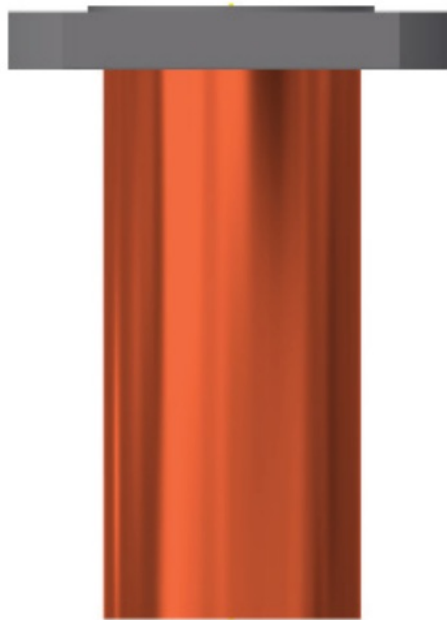
NOTE: Protection of entire valve including steel nge is recommended after installation for out- door use.

Outlet Flange Brazing

Place outer flange on evenly cut copper pipe

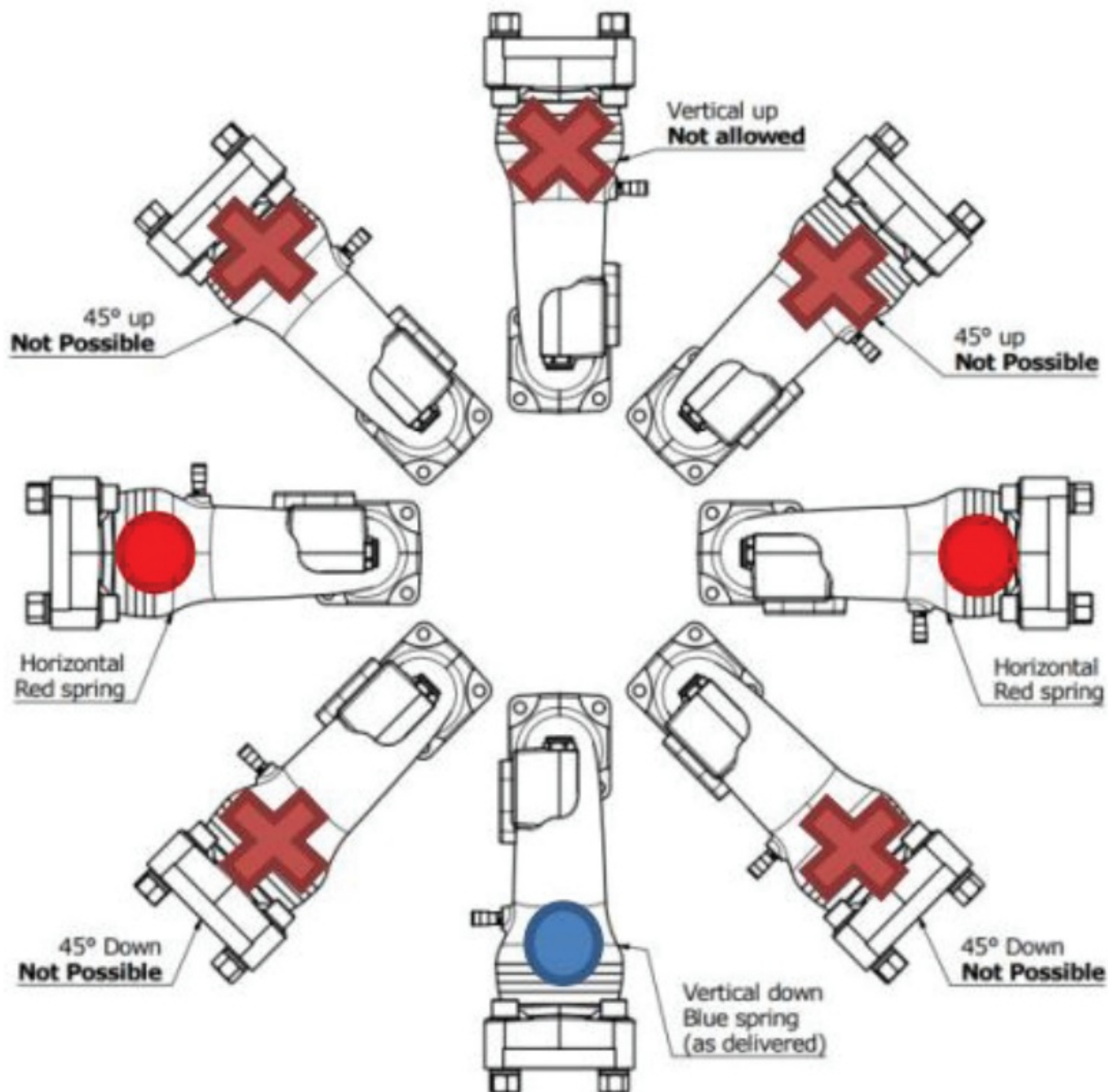
NOTE: ensure flange is not mounted on main housing during brazing

Min 5% Ag



Orientation

NOTE: Check valve spring must be changed when using any orientation other than vertical downing



When changing check valve spring

1. Remove check valve insert from main housing
2. Remove check valve head
3. Remove spring and replace with correct color based on intended orientation
4. Replace check valve head and insert
5. Install outlet flange, O-ring and fasteners

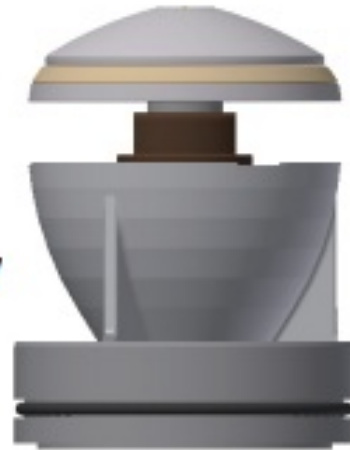
Main housing



Main housing



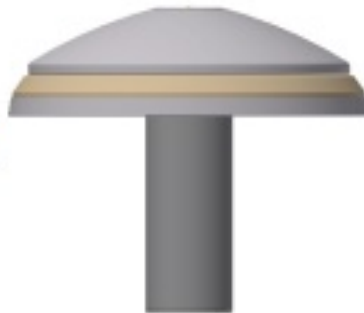
Check valve insert



NOTE: Use silicone lubricant spray at O-ring if needed



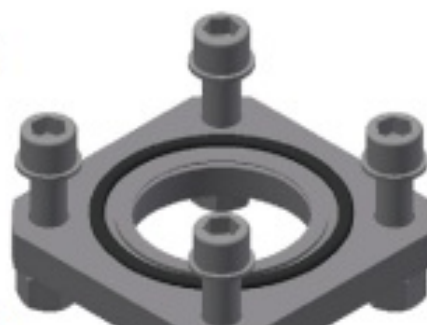
Check valve head



Check valve spring



Outlet flange,
O-ring and fasteners

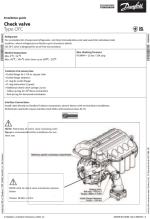


NOTE: Apply provided lubrication to

O-ring



Documents / Resources

	<p>Danfoss OFC Check Valve [pdf] Installation Guide OFC, Check Valve, OFC Check Valve, Valve</p>
---	--

References

-  [Danfoss Global Product Store | Homepage](#)