



Danfoss OFC Check and Stop Valve Installation Guide

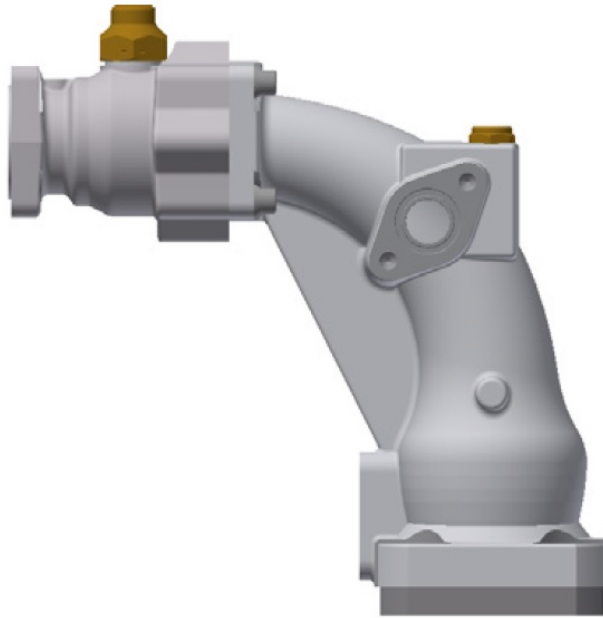
[Home](#) » [Danfoss](#) » Danfoss OFC Check and Stop Valve Installation Guide 

Contents

- [1 Danfoss OFC Check and Stop Valve](#)
- [2 Refrigerant](#)
- [3 Contents of accessory box](#)
- [4 Installation](#)
- [5 Orientation](#)
- [6 When changing the check valve spring](#)
- [7 Documents / Resources](#)
 - [7.1 References](#)
- [8 Related Posts](#)



Danfoss OFC Check and Stop Valve



Refrigerant

UL is listed for R134a, R513A, and R515B. CE approved for fluid group 2, including R1234ze(E). For other refrigerants, visit <http://store.danfoss.com/> and search for individual codes, where refrigerants are listed as part of product details.

- **Oil:** OFC valve is designed for an oil-free environment
- **Media Temperature:**
 - Min. 0 °C / 32 °F
 - **Max.** 90 °C / 194 °F, short term up to 100°C / 212°F
- **Max. Working Pressure:**
 - PS/MWP = 23 bar / 334 psig

Contents of accessory box

- Outlet flange for 3 1/8 in. copper tube
- Outlet flange fasteners
- O-ring for outlet flange
- O-ring lubrication (2 grams)
- **Additional check valve springs (2 pcs):**
 - Yellow spring, for 45° down orientation
 - Red spring, for horizontal orientation

Installation

Install the valve directly on the Danfoss Turbocor compressor, the picture is shown with vertical down installation. Protect the valve from impact in the installation.

- All fasteners and bolts require stainless steel. Bolts with minimum class A2-70.



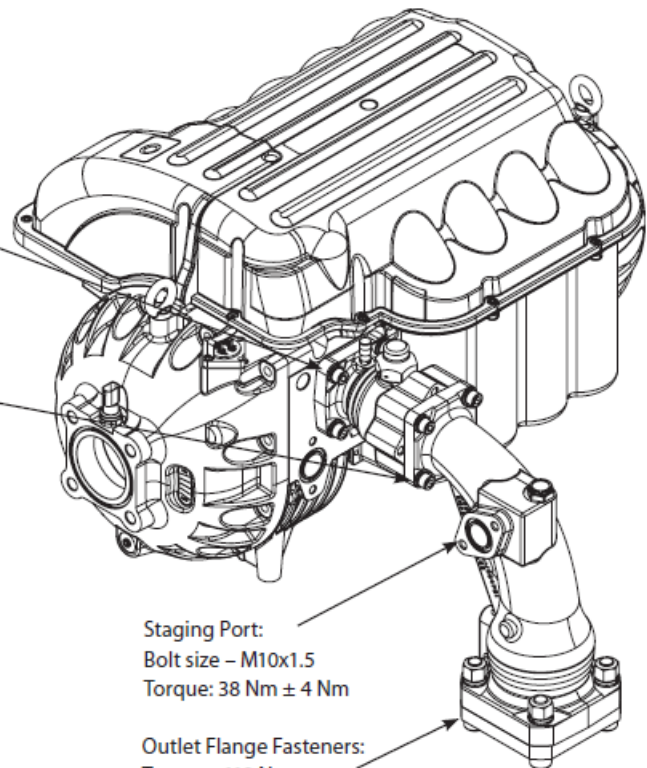
NOTE: Protection of the entire valve including the steel flange is recommended after installation for outdoor use.

Reference specific compressor requirements

Ball valve clocking may be changed by removing bolts and rotating ball valve housing without retracting the ball valve assembly away from the elbow.

NOTE: refer to check valve orientation options below

Torque: 38 Nm \pm 4 Nm



Staging Port:
Bolt size – M10x1.5
Torque: 38 Nm \pm 4 Nm

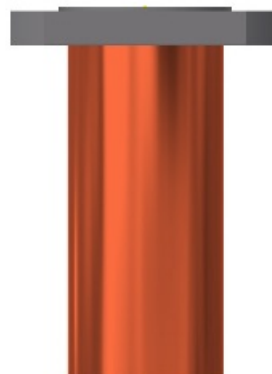
Outlet Flange Fasteners:
Torque - 110 Nm

Outlet Flange Brazing:

Place the outer flange on an evenly cut copper pipe

NOTE: Ensure the flange is not mounted on the main housing during brazing.

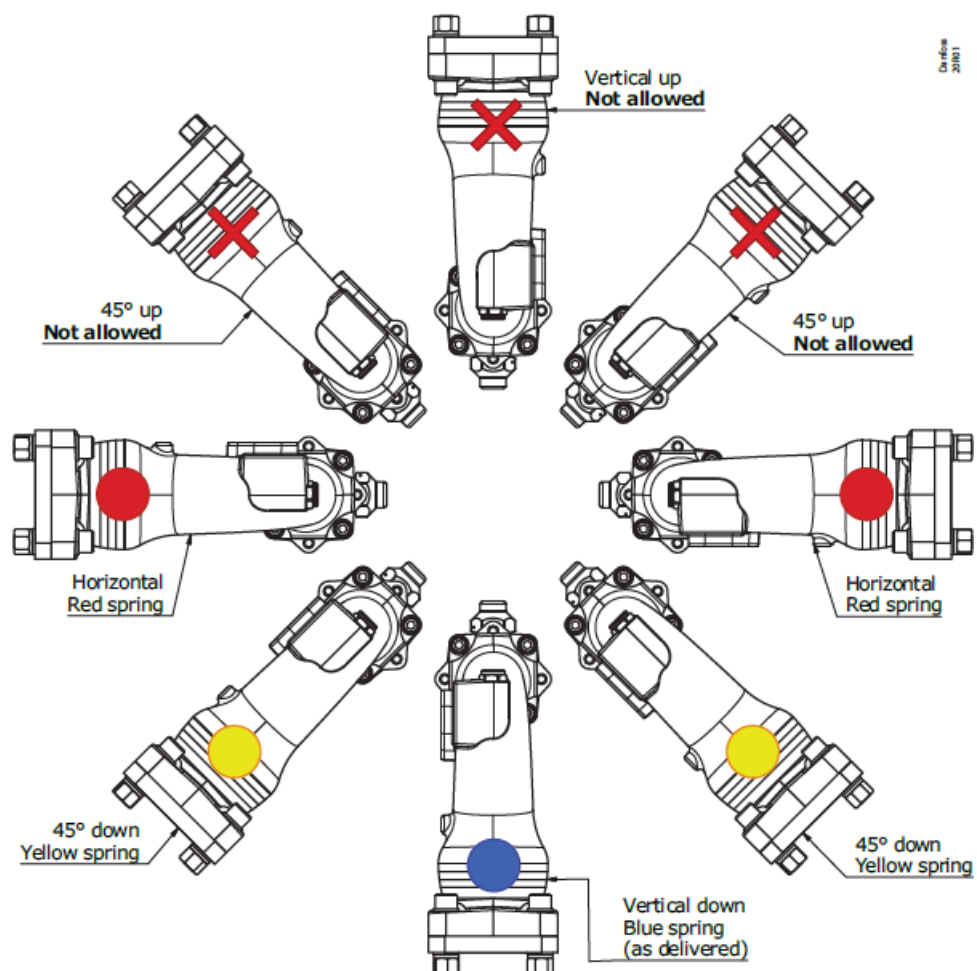
Min 5% Ag



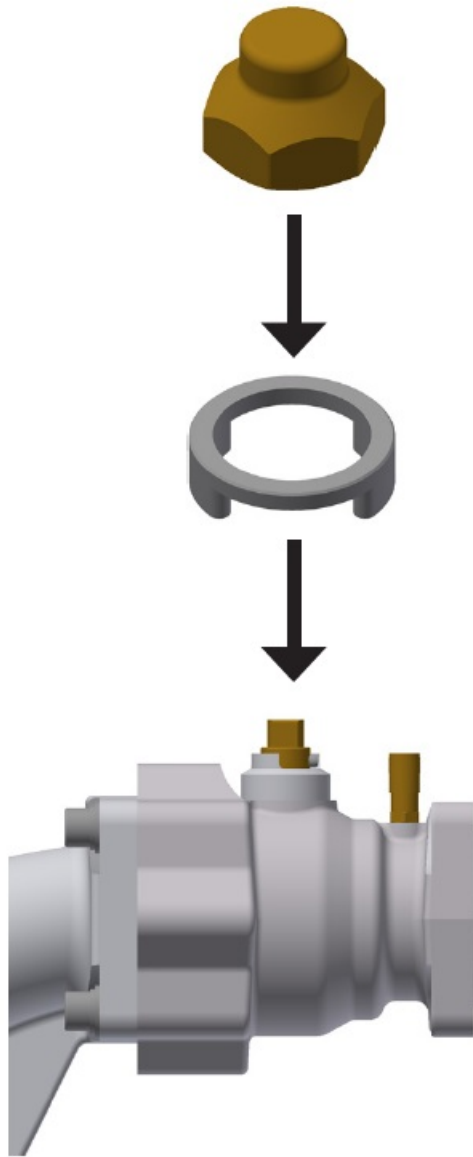
Orientation

NOTE:

Check valve spring must be changed when using any orientation other than vertical downing.

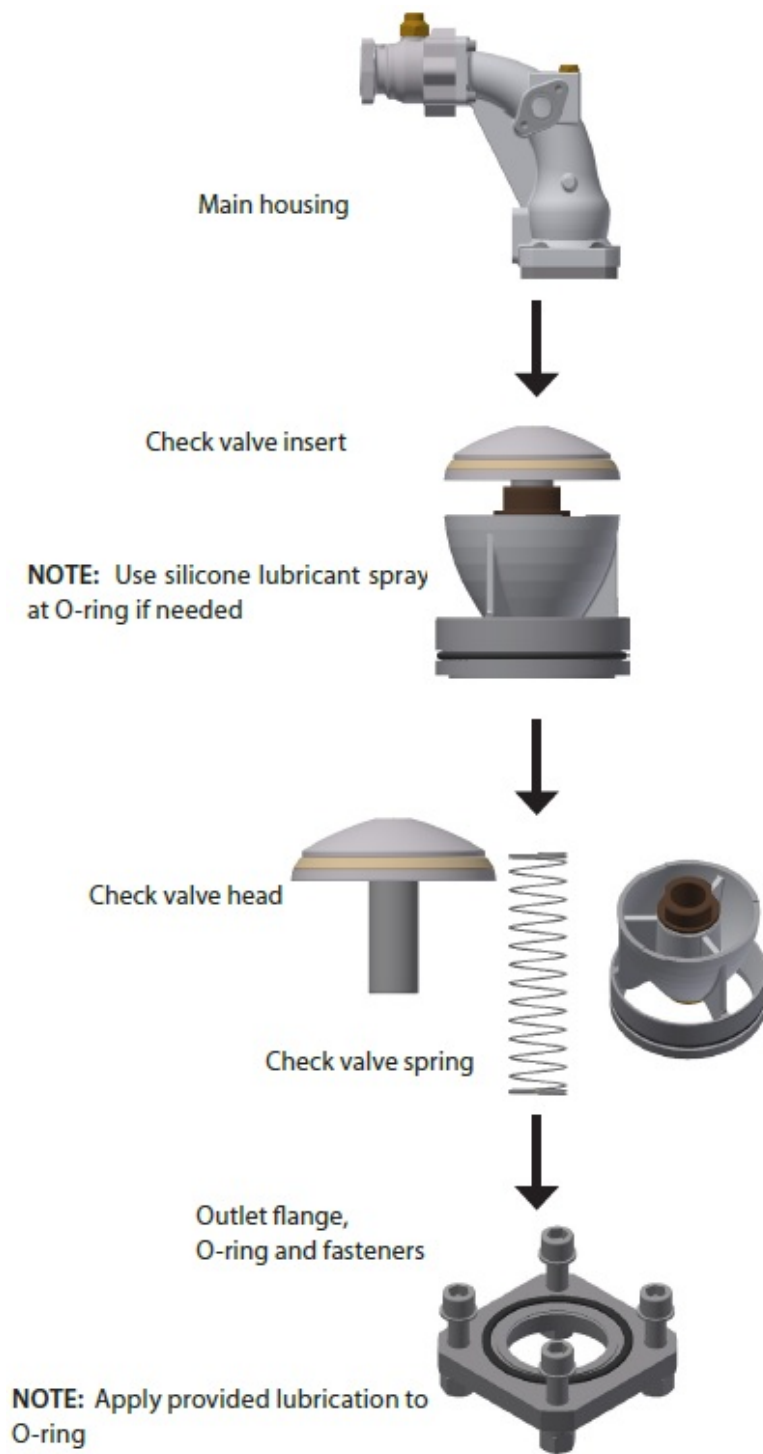


Always replace the lock ring and cap after opening/ closing the ball valve.

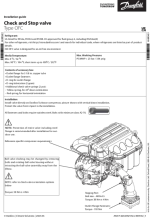
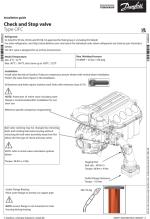


When changing the check valve spring

1. Remove the check valve insert from the main housing
2. Remove the check valve head
3. Remove the spring and replace it with the correct color based on the intended orientation
4. Replace the check valve head and insert
5. Install outlet flange, O-ring, and fasteners.



Documents / Resources

	<p>Danfoss OFC Check and Stop Valve [pdf] Installation Guide OFC Check and Stop Valve, OFC, Check and Stop Valve, Stop Valve, Valve</p>
	<p>Danfoss OFC Check and Stop valve [pdf] Installation Guide OFC, Check and Stop valve, OFC Check and Stop valve, Stop valve, valve</p>

References

-  [Danfoss Global Product Store | Homepage](#)