



Danfoss NRVS Check Valve Installation Guide

[Home](#) » [Danfoss](#) » Danfoss NRVS Check Valve Installation Guide 

Danfoss NRVS Check Valve

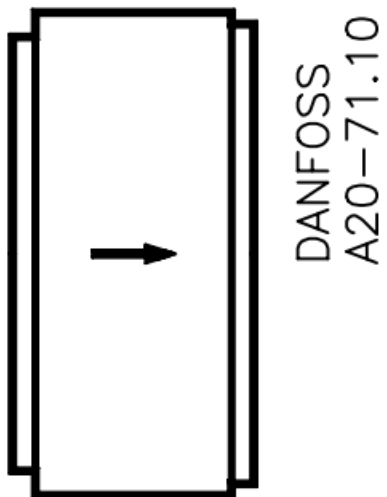


Danfoss NRVS Check Valve

Contents

- [1 Only in liquid lines](#)
- [2 Installation Instruction](#)
- [3 Customer Support](#)
- [4 Documents / Resources](#)
 - [4.1 References](#)

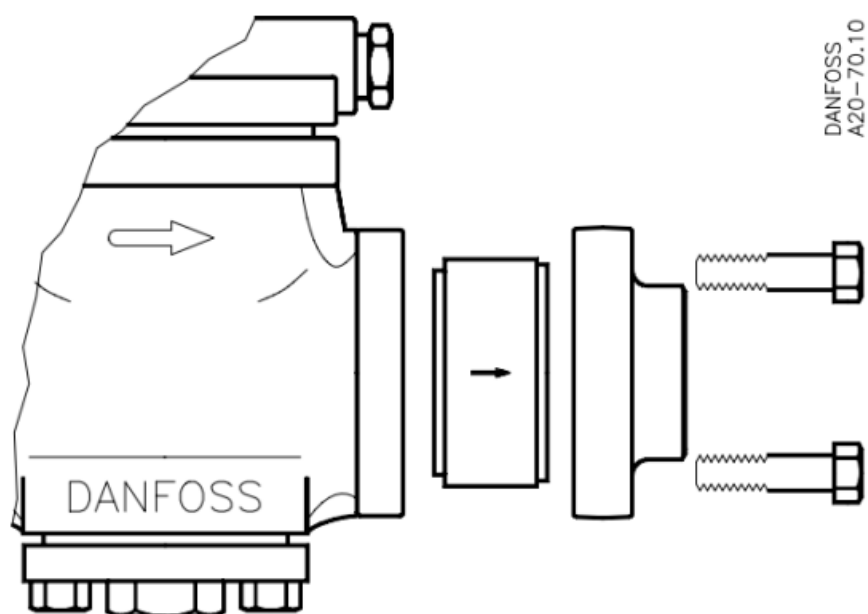
Only in liquid lines

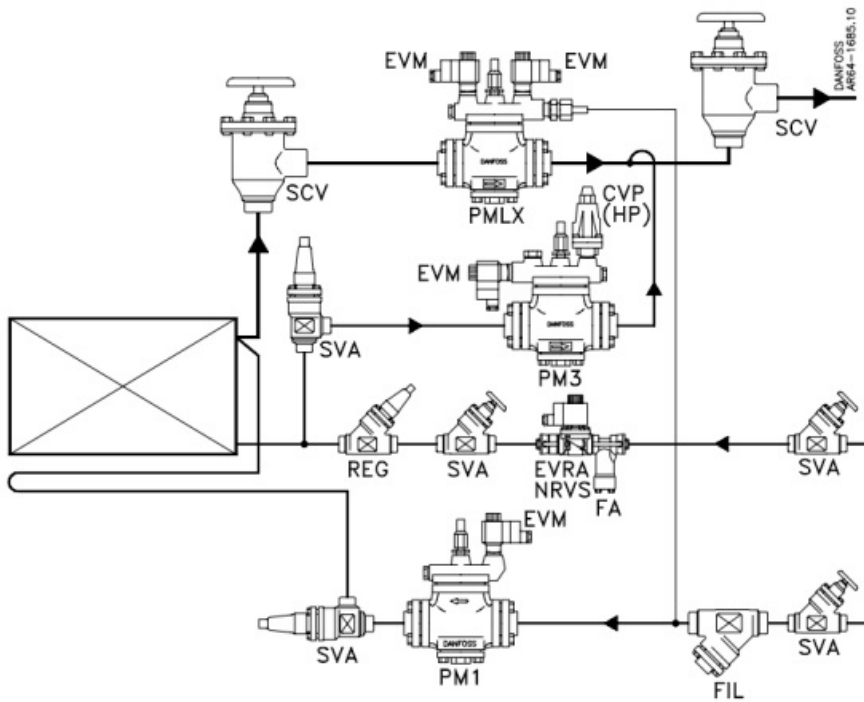


t min	-50°C/-58°F
t max	140°C/285°F
PB/MWP	28 bar/400psig

Type	Code No
NRVS 15	020-2032
NRVS 25	020-2033

Installation Instruction





Customer Support

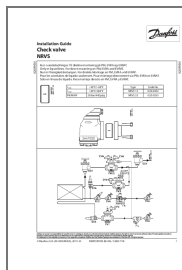
Danfoss can accept no responsibility for possible errors in catalogues, brochures and other printed material. Danfoss reserves the right to alter its products without notice. This also applies to products already on order provided that such alterations can be made without subsequential changes being necessary in specifications already agreed.

All trademarks in this material are property of the respective companies. Danfoss and the Danfoss logotype are trademarks of Danfoss A/S. All rights reserved.

Danfoss A/S (AC-MCI/MWA), 2013-10
DKRCI.PI.FIO.B2.ML/520H7118



Documents / Resources



[Danfoss NRVS Check Valve](#) [pdf] Installation Guide
020R9501, 020R9501, NRVS Check Valve, Check Valve, Valve

References

- [User Manual](#)

[Manuals+](#), [Privacy Policy](#)

This website is an independent publication and is neither affiliated with nor endorsed by any of the trademark owners. The "Bluetooth®" word mark and logos are registered trademarks owned by Bluetooth SIG, Inc. The "Wi-Fi®" word mark and logos are registered trademarks owned by the Wi-Fi Alliance. Any use of these marks on this website does not imply any affiliation with or endorsement.