



Danfoss MSV-BD Balancing Valves User Guide

[Home](#) » [Danfoss](#) » Danfoss MSV-BD Balancing Valves User Guide 

Danfoss MSV-BD Balancing Valves



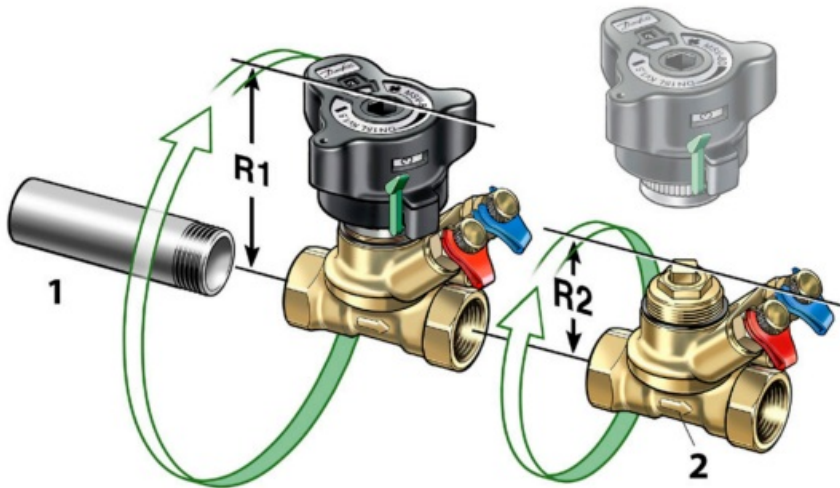
Contents

- 1 Fitting
- 2 Removal Of Handle
- 3 Open And Close
- 4 Setting The Flow
- 5 Drain
- 6 Instruction For Use
- 7 Documents / Resources
 - 7.1 References
- 8 Related Posts

Fitting

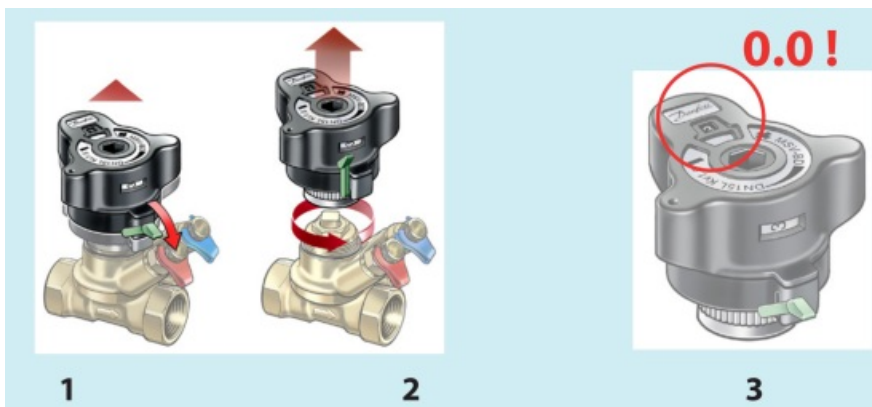
Before fitting the valve the installer must ensure that the pipe system is clean and:

1. The valve can be turned 360° if threaded pipe is used.
2. The valve is oriented according to the flow arrow.



Removal Of Handle

1. The union nut become accessible when the green lock is released.
2. Turn scale to 0.0 and unscrew the union nut.

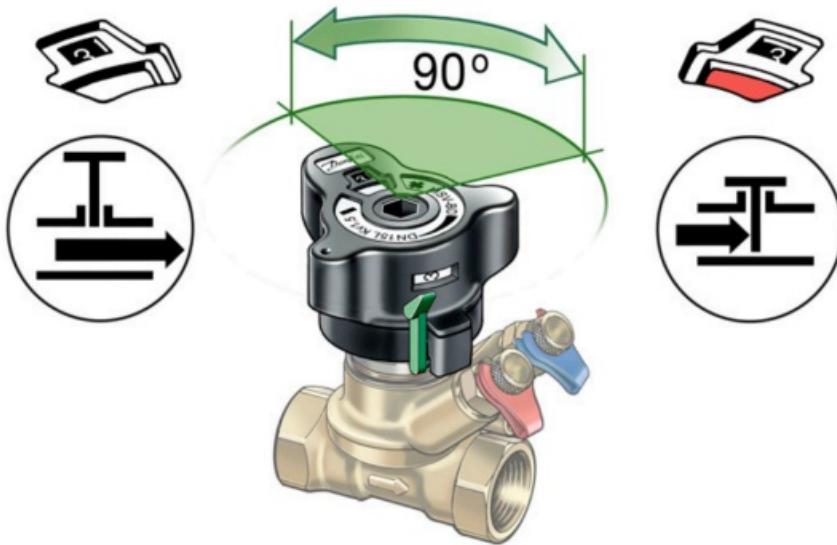


Calibration

3. Before refitting handle ensure that the setting displays 0.0

Open And Close

An indicator shows:
White = open valve
Red = closed valve

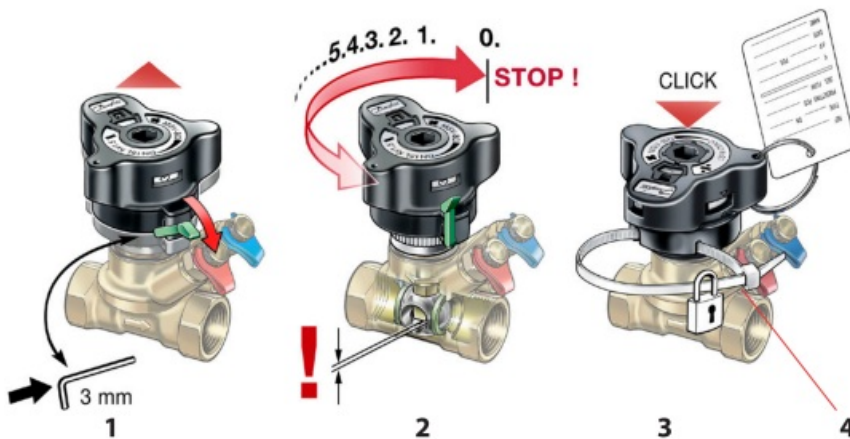


Setting The Flow

1. When valve is open the lock is released. Allen key can also be used.
2. The handle pops up and the required flow may be set. Flow diagrams are found on <http://heating.danfoss.com>
3. Lock the setting by pressing the handle until click.

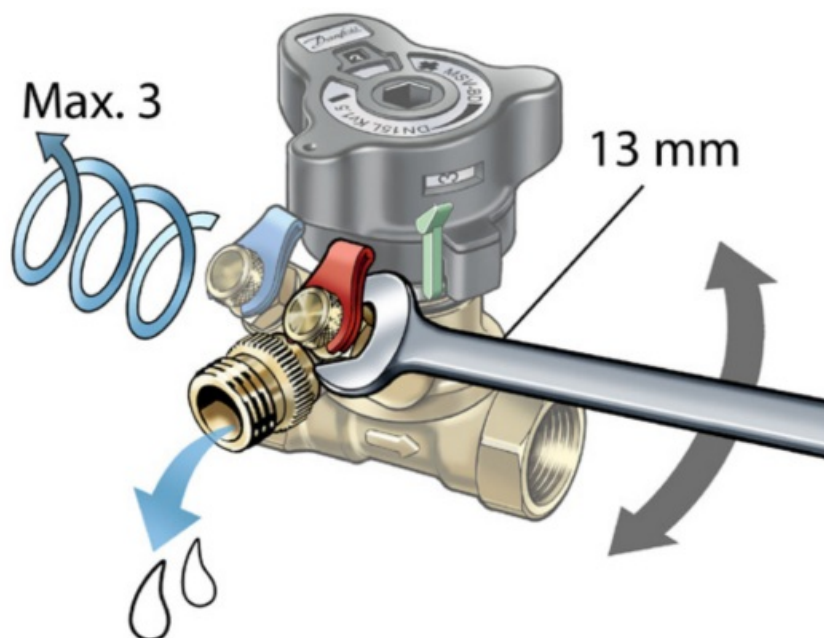
Seal

4. The setting may be protected using a sealing strip.



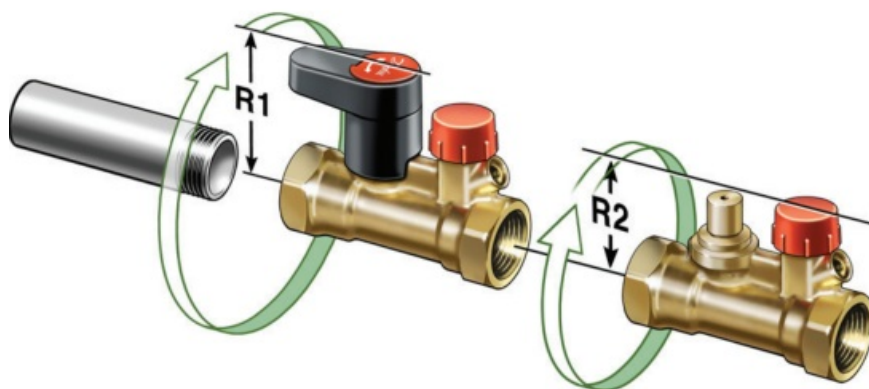
Drain

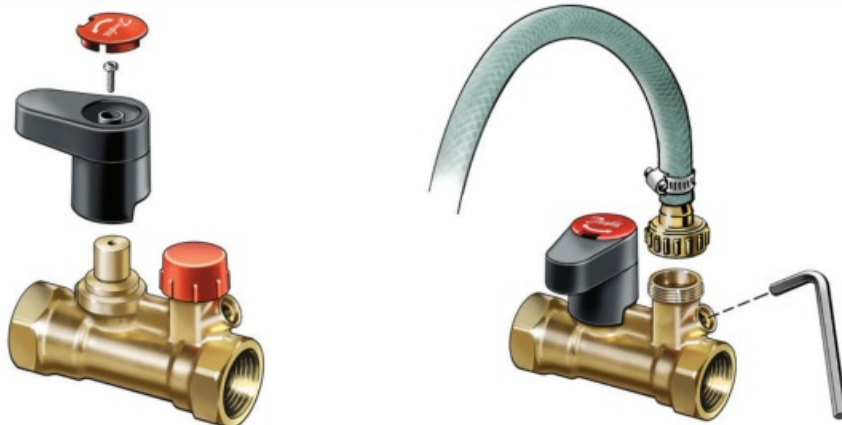
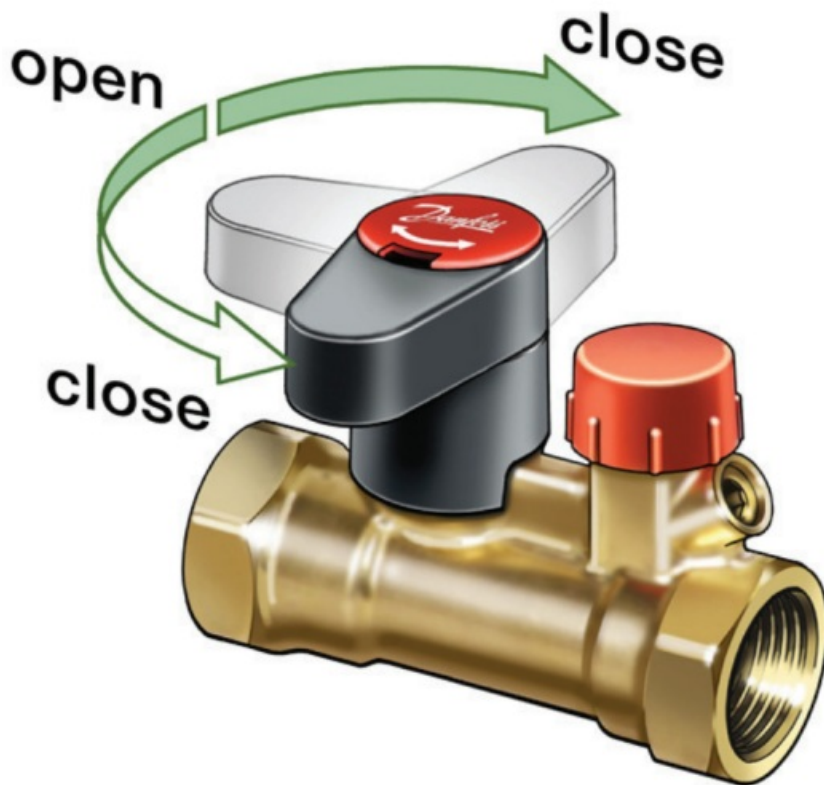
The measuring station can be turned to any position.
The red test plug drains the inlet side of valve and blue the outlet.
Max. 3 turns, see illustration.
The accessory drain connection is to be used to attach a hose.



Instruction For Use

DN	R1/R2 (mm)
15	62/50
20	66/55
25	71/59
32	117/66
40	119/66
50	122/67





Danfoss

Documents / Resources



[Danfoss MSV-BD Balancing Valves](#) [pdf] User Guide
MSV-BD Balancing Valves, MSV-BD, Balancing Valves, Valves

References

- [Engineering Tomorrow | Danfoss](#)
- [Danfoss – Engineering Tomorrow | Danfoss](#)
- [Danfoss Climate Solutions for heating | Efficient solutions for superior comfort | Danfoss](#)

- [🌐 Pagrindinis puslapis | Danfoss](#)
- [User Manual](#)

[Manuals+](#), [Privacy Policy](#)

This website is an independent publication and is neither affiliated with nor endorsed by any of the trademark owners. The "Bluetooth®" word mark and logos are registered trademarks owned by Bluetooth SIG, Inc. The "Wi-Fi®" word mark and logos are registered trademarks owned by the Wi-Fi Alliance. Any use of these marks on this website does not imply any affiliation with or endorsement.