

[Skip to content](#)

Manuals+

User Manuals Simplified.

Danfoss MBC 5080 Differential Pressure Switch Installation Guide

[Home](#) » [Danfoss](#) » Danfoss MBC 5080 Differential Pressure Switch Installation Guide

Danfoss MBC 5080 Differential Pressure Switch



Contents [hide](#)

[1 Installation](#)

[1.1 Differential pressure switch Types MBC 5080 and MBC 5180](#)

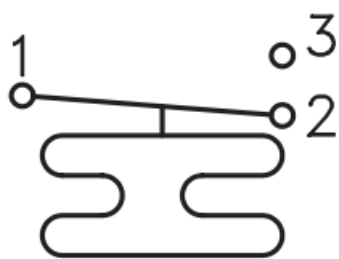
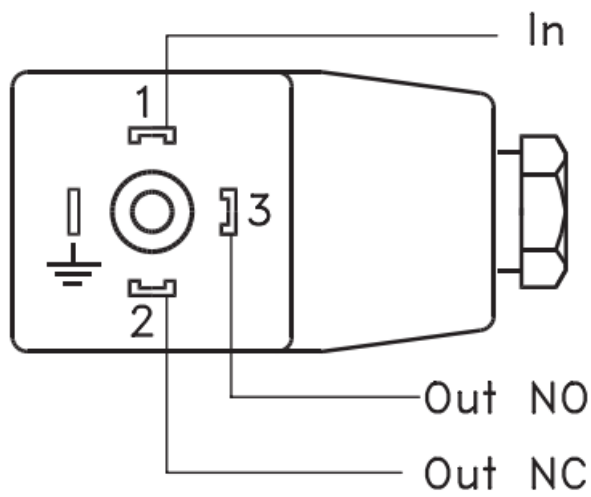
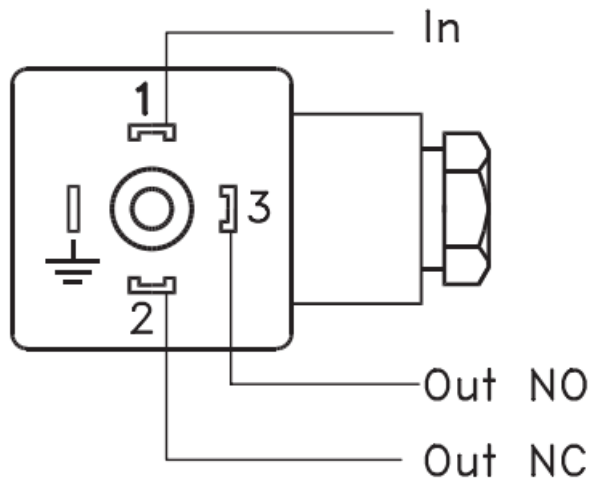
[2 Documents / Resources](#)

[3 Related Posts](#)

Installation

Differential pressure switch Types MBC 5080 and MBC 5180

AC 15: 0.5 A 250 V
DC 13: 12 W 125 V



1 2 3



en **Electrical connection**

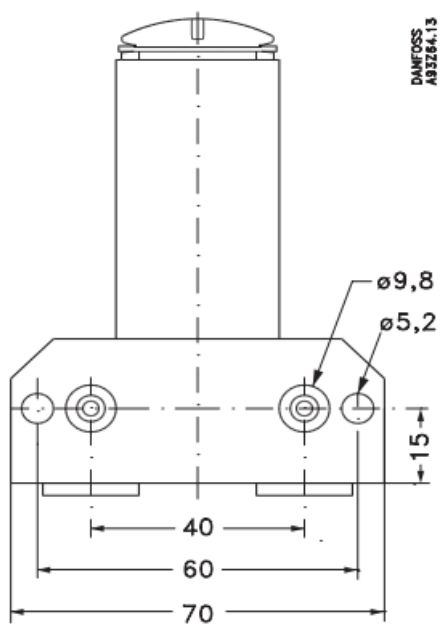
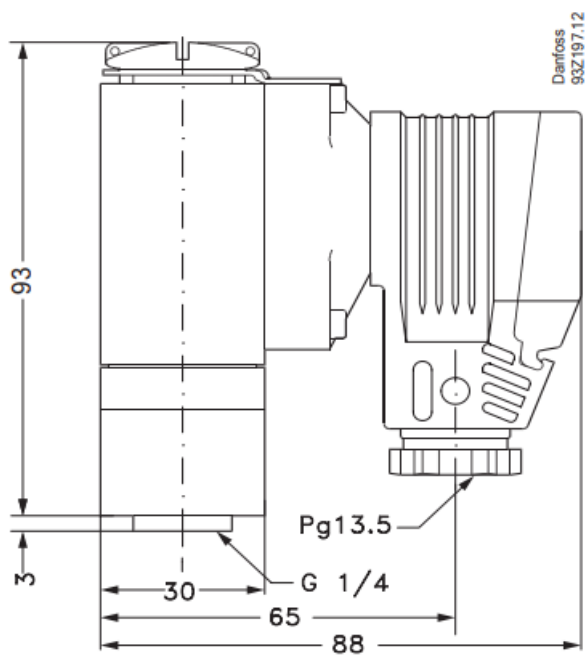
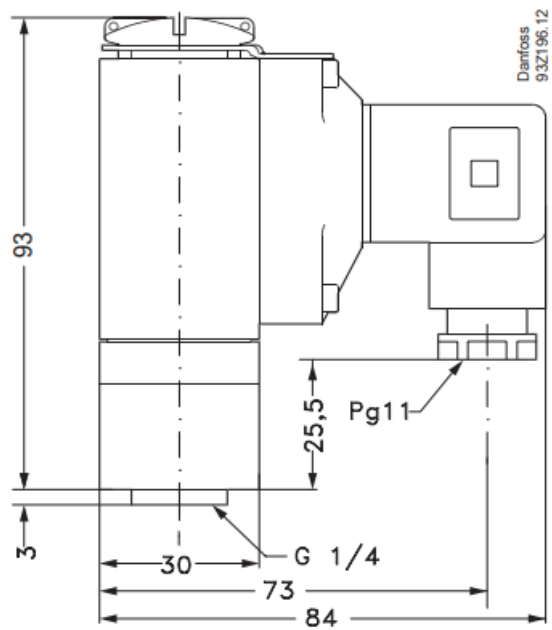
Input

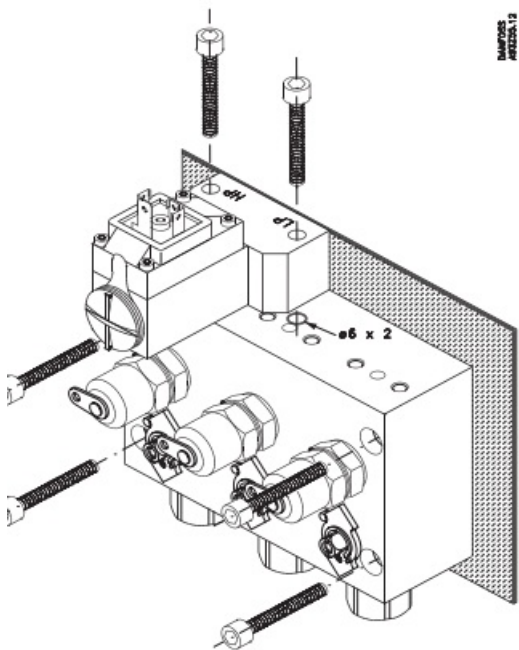
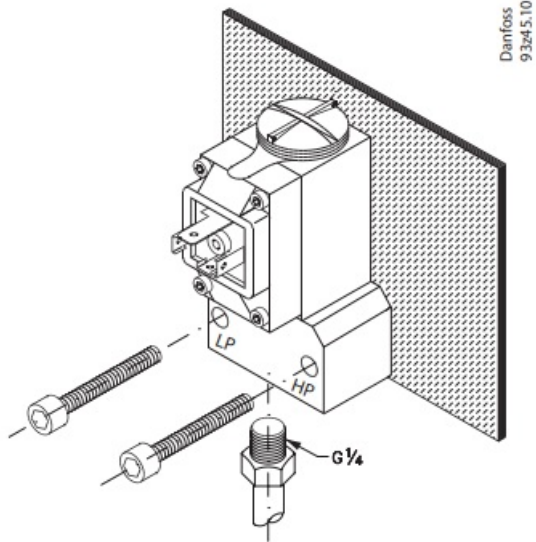
Normally closed (NC)

Normally open (NO)

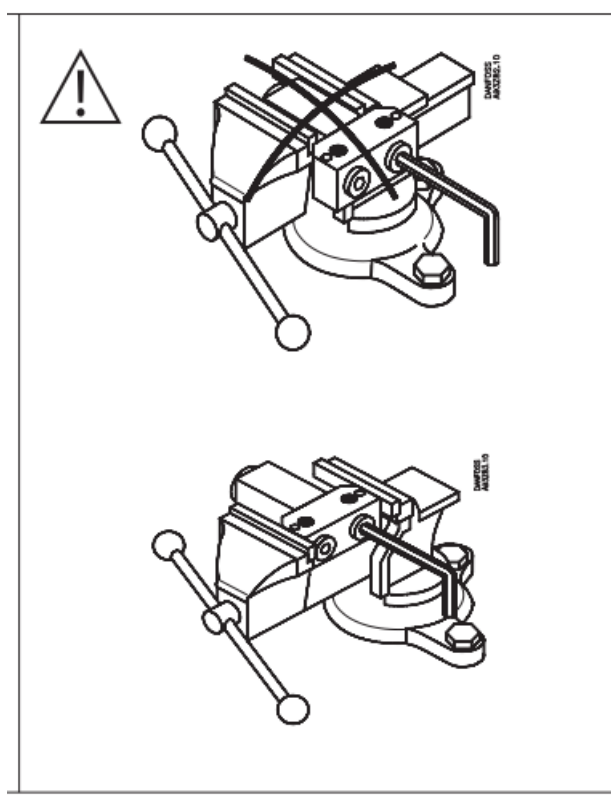
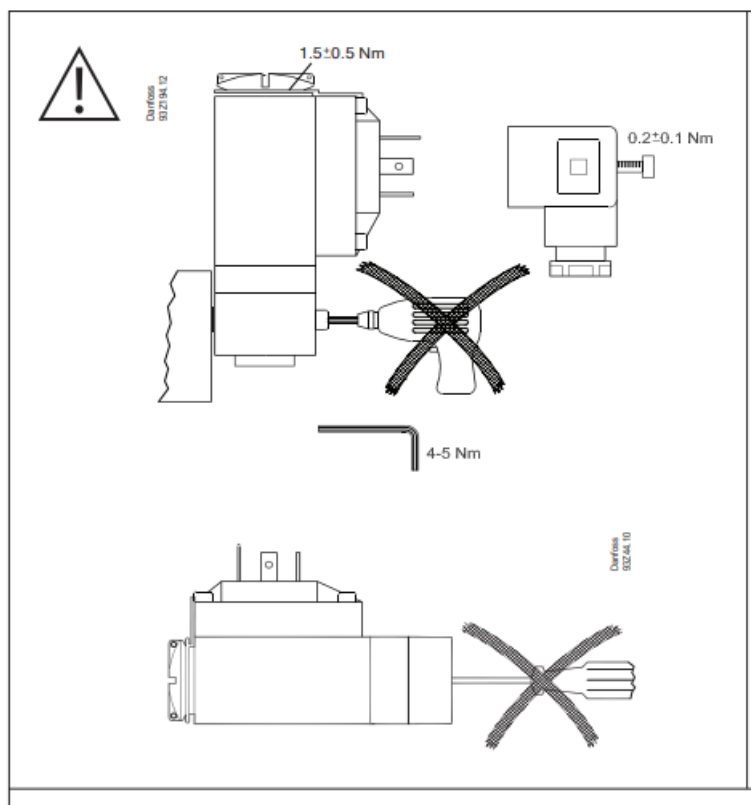
Connected to enclosure of pressure switch

Attention: Use only the accompanying plug, also when replacing.

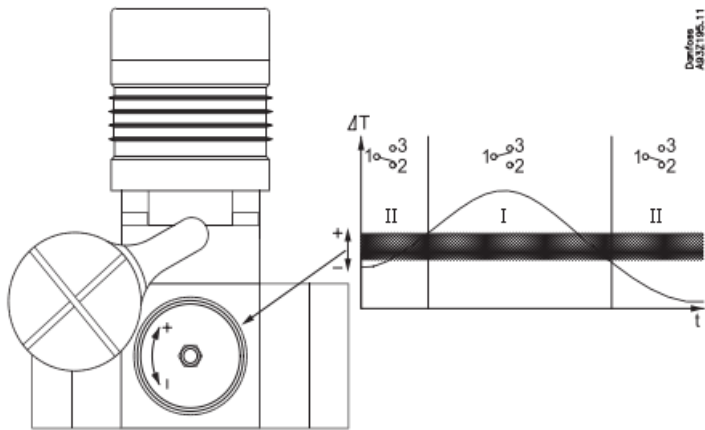




Operation temperature 10 °C 85 °C

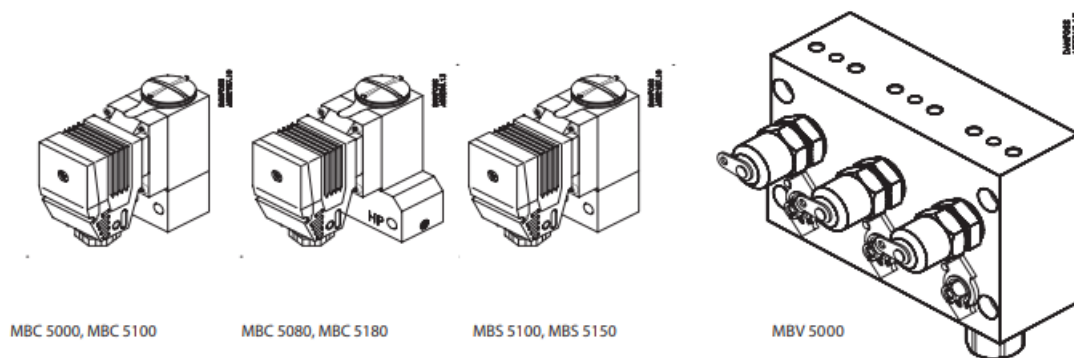


Operation temperature $-10\text{ }^{\circ}\text{C}$ $85\text{ }^{\circ}\text{C}$

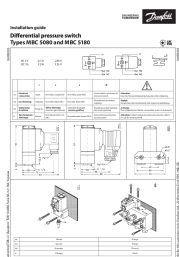


Fixed hysteresis

Danfoss block components



Documents / Resources



[Danfoss MBC 5080 Differential Pressure Switch](#) [pdf] Installation Guide
MBC 5080 Differential Pressure Switch, MBC 5080, Differential Pressure Switch, Pressure Switch, Switch

[Manuals+](#)

- [home](#)
- [privacy](#)