



Danfoss LE402 Logic Element Normally Closed Spool Type Pilot Valve Adapter User Guide

[Home](#) » [Danfoss](#) » Danfoss LE402 Logic Element Normally Closed Spool Type Pilot Valve Adapter User Guide



Danfoss LE402 Logic Element Normally Closed Spool Type Pilot Valve Adapter



Logic Element, Normally Closed, Spool Type, Pilot Valve Adapter
350 bar [5000 psi] • 350 l/min [93 US gpm]

Contents

[1 DESCRIPTION AND OPERATION](#)

[2 SCHEMATIC](#)

[3 DIMENSIONS](#)

[4 PERFORMANCE DATA](#)

[5 PERFORMANCE DATA](#)

[6 MODEL CODE](#)

[7 Documents / Resources](#)

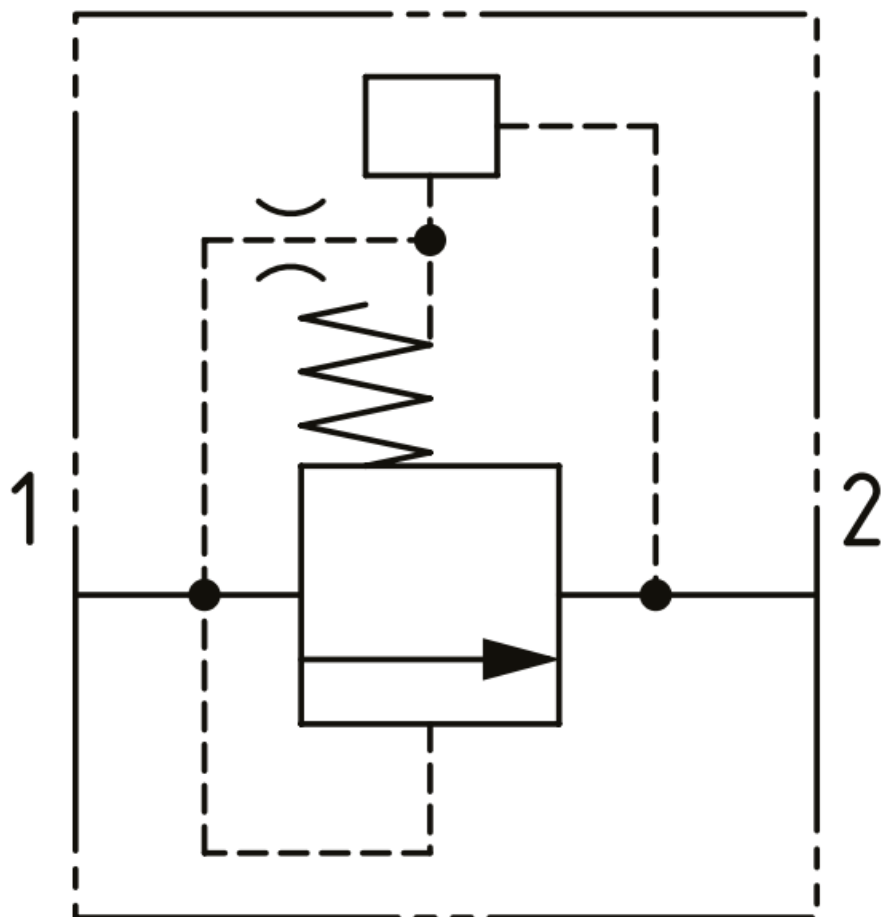
[7.1 References](#)

[8 Related Posts](#)

DESCRIPTION AND OPERATION

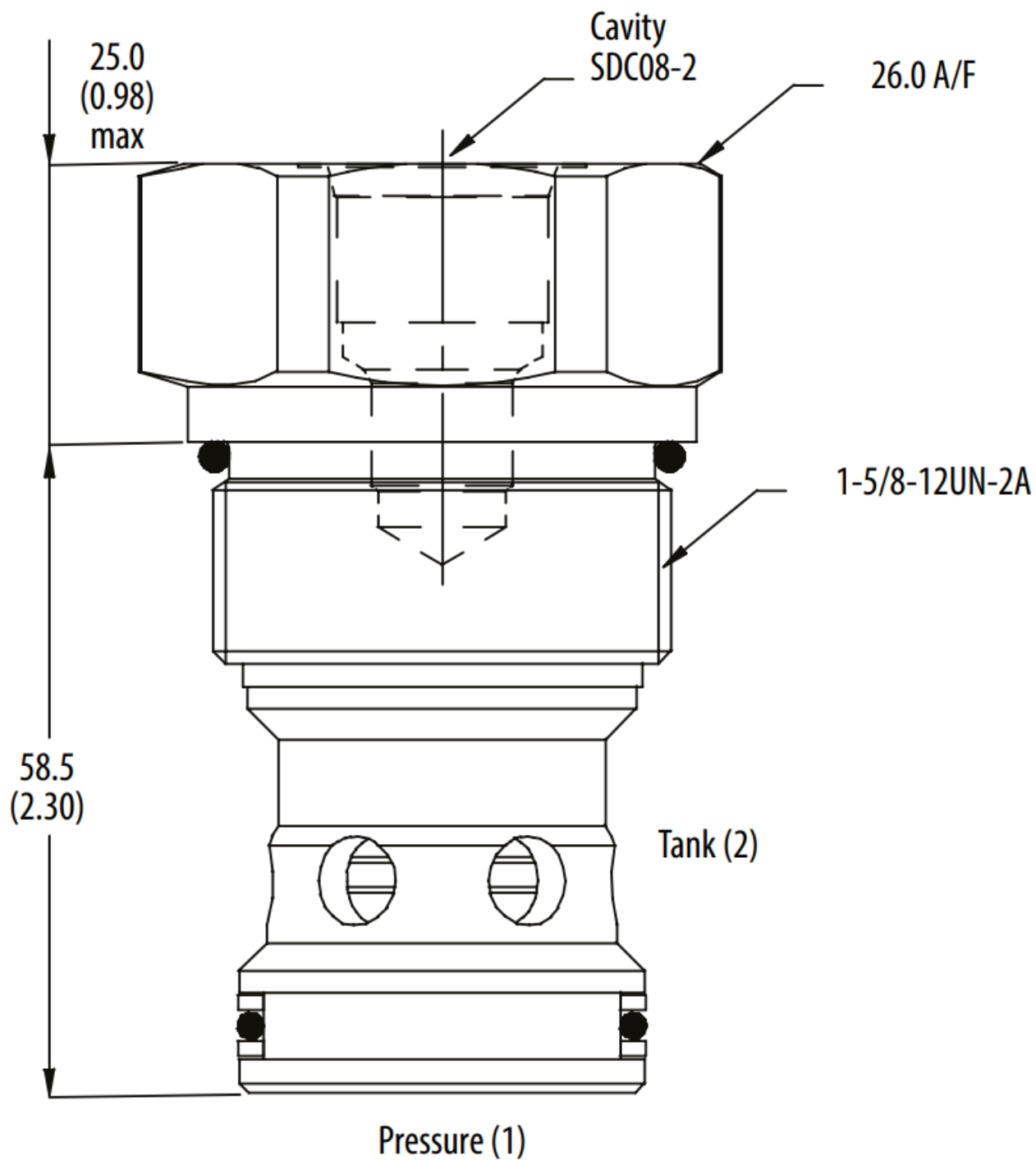
This is a high flow, 2-port logic element where a pilot control valve can be installed into the cavity on the top of the valve. The valve is normally closed from port 1 to 2, with an orifice through the spool connecting port 1 to the inlet port 1 of the control valve. Installing a direct acting relief valve will make this valve a high flow relief valve, a solenoid valve a high flow on/off valve, and a proportional control valve a high flow proportional control valve.

SCHEMATIC



DIMENSIONS

mm [in]

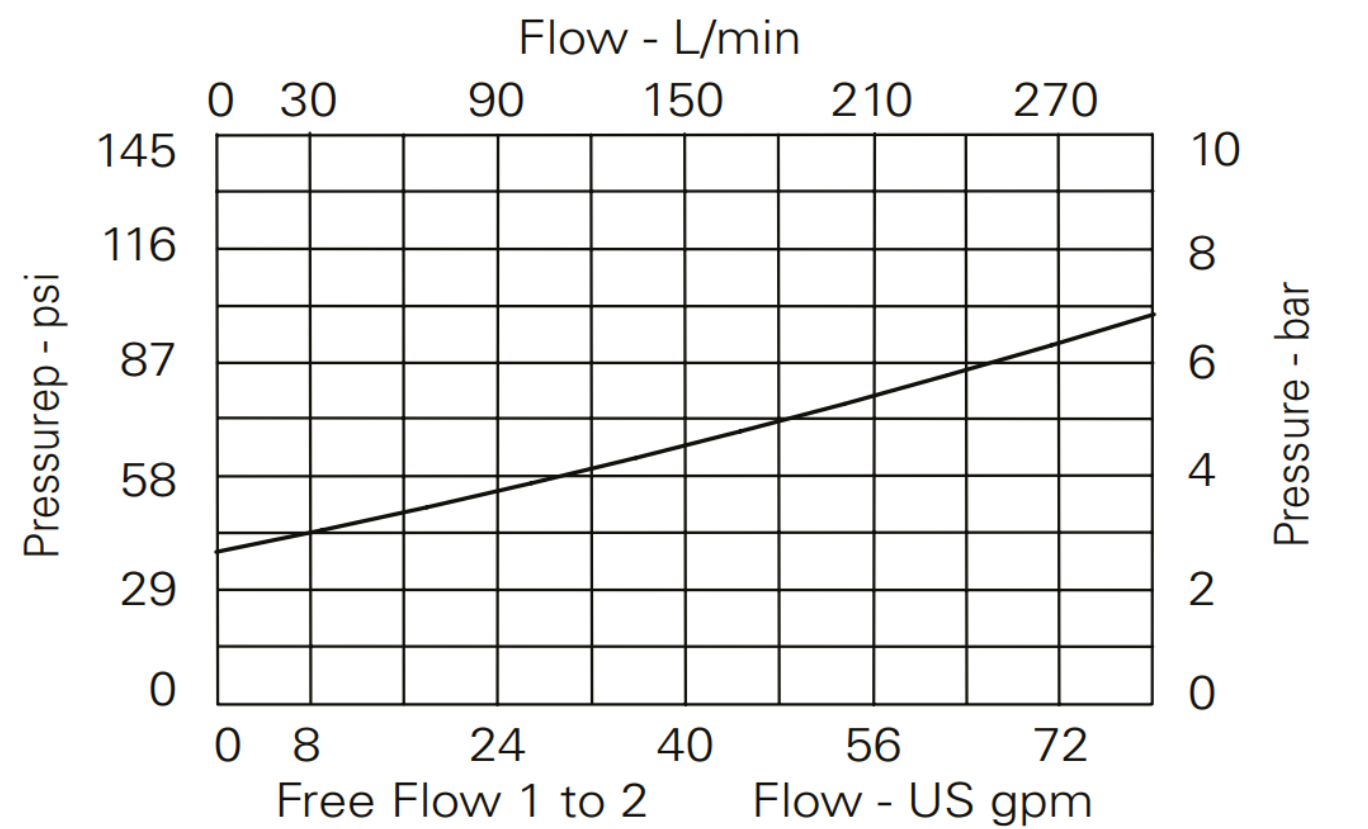


Installation torque
60 Nm [44 ft lbs]

PERFORMANCE DATA

Rated pressure	350 bar [5000 psi]
Rated ow	350 l/min [93 US gpm]
Pilot Valve Cavity	SDC08-2
Leakage	350 ml/min nominal
Weight	0.29 kg [0.63 lb]
Cavity	SDC20-2

PERFORMANCE DATA



MODEL CODE

LE452 - N - 0.2 - 1DR2-P-40S - 10W - 377

Basic Code

LE402 - No housing
LE452 - Cartridge and housing

Seal Option

Code	Seal Kit
N - Buna-N	SK633
V - Viton	SK633V

Spring Bias

0.2 - 2 bar [29 psi]

Pilot cartridge

Omit - None
1DR2-P-40S
PDR21AN*6**
S207N

Housing Material

Omit - Aluminum/No housing
377 - Steel

Housing

Code	Ports	Aluminum	Steel
Omit	No housing		
10W	1-1/4" BSP	C24005	C24006
12W	1-1/2" BSP	C24007	C24008
20T	1-1/4" SAE	C24011	C24012
24T	1-1/2" SAE	C24013	C24014

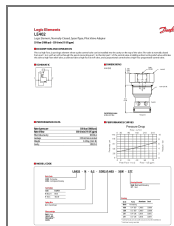
* Aluminum bodies are to be used for pressures less than 210 bar [3000 psi].

* Additional housings available

BC479481219665en-000101

Danfoss

Documents / Resources



[Danfoss LE402 Logic Element Normally Closed Spool Type Pilot Valve Adapter \[pdf\] User Guide](#)

LE402 Logic Element Normally Closed Spool Type Pilot Valve Adapter, LE402, Logic Element N ormally Closed Spool Type Pilot Valve Adapter, Normally Closed Spool Type Pilot Valve Adapter, Spool Type Pilot Valve Adapter, Pilot Valve Adapter, Valve Adapter, Adapter

References

- [User Manual](#)

[Manuals+](#), [Privacy Policy](#)

This website is an independent publication and is neither affiliated with nor endorsed by any of the trademark owners. The "Bluetooth®" word mark and logos are registered trademarks owned by Bluetooth SIG, Inc. The "Wi-Fi®" word mark and logos are registered trademarks owned by the Wi-Fi Alliance. Any use of these marks on this website does not imply any affiliation with or endorsement.