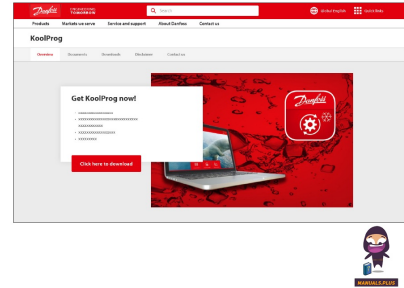




Kool Prog PC Software



Danfoss Kool Prog PC Software User Guide

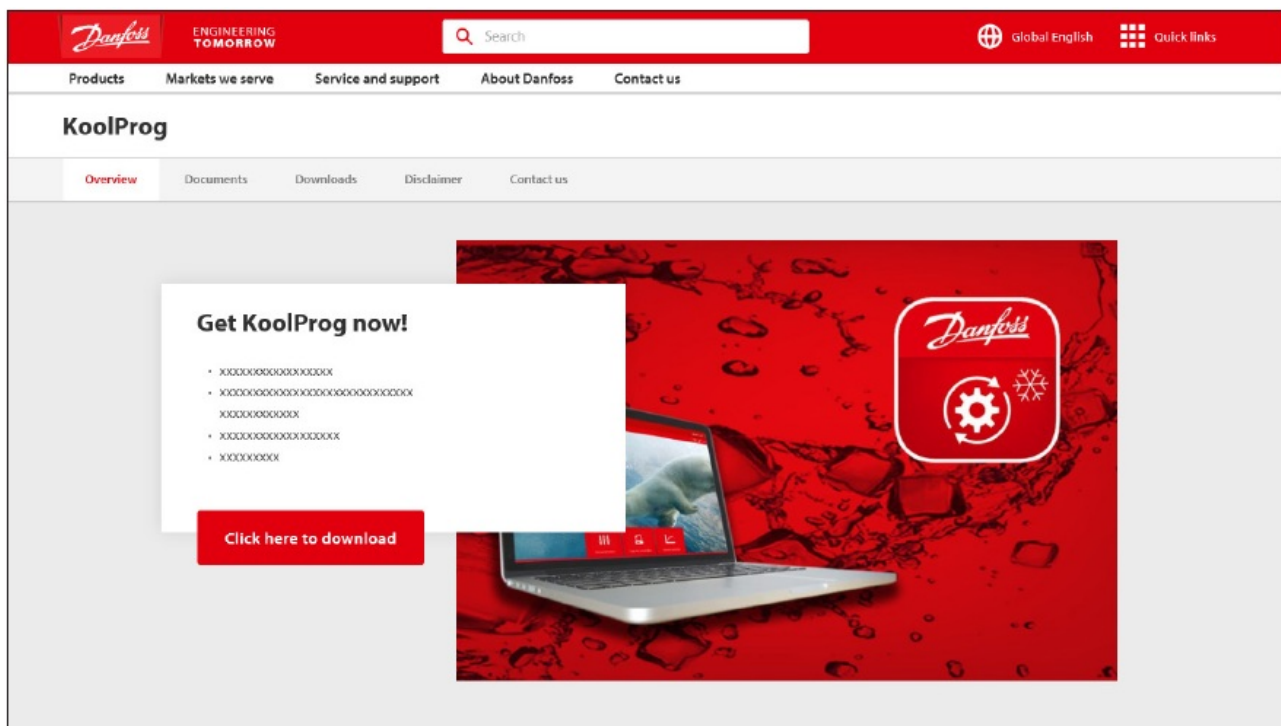
[Home](#) » [Danfoss](#) » Danfoss Kool Prog PC Software User Guide 

Contents

- 1 Danfoss Kool Prog PC Software
- 2 Product Information
- 3 Product Usage Instructions
- 4 Introduction
- 5 System requirements
- 6 Installing software
- 7 Connection with controllers
- 8 Starting the program
- 9 Set parameters
- 10 Copy to controller
- 11 On-line service
- 12 Unknown controller support
- 13 Documents / Resources
 - 13.1 References



Danfoss Kool Prog PC Software



Product Information

Specifications:

- Operating Systems: Windows 7, Windows 10 (32-bit and 64-bit)
- RAM: 8 GB
- Hard Drive Space: 200 GB – 250 GB
- Required Software: MS Office 2010 and above
- Interface: USB 3.0

Product Usage Instructions

Downloading the Software:

Download the KoolProgSetup.exe file from the following location: <http://koolprog.danfoss.com>

System Requirements:

This software is intended for a single user and requires the following system specifications:

- Operating Systems: Windows 7, Windows 10 (32-bit and 64-bit)
- RAM: 8 GB
- Hard Drive Space: 200 GB – 250 GB
- Required Software: MS Office 2010 and above
- Interface: USB 3.0

Note: Macintosh operating system is not supported.

Connection with Controllers:

When connecting controllers, follow these steps:

1. Connect the USB cable to the PC's USB port.
2. Connect the controller to the PC.

CAUTION: Ensure that only one controller is connected at any time.

Mass Programming of Controllers:

To mass program ERC controllers using the EKA key:

1. Connect the EKA programming key to the USB port of the PC/laptop.
2. Transfer the file in .erc format from the computer to the programming key.

For detailed instructions on transferring files to specific ERC controllers, refer to the provided documentation.

FAQ:

- **Q: What should I do if I encounter a Security warning during installation?**

A: Click on "Install this driver software anyway" to proceed with the installation.

- **Q: Can I run the setup directly from a Windows server or network file server?**

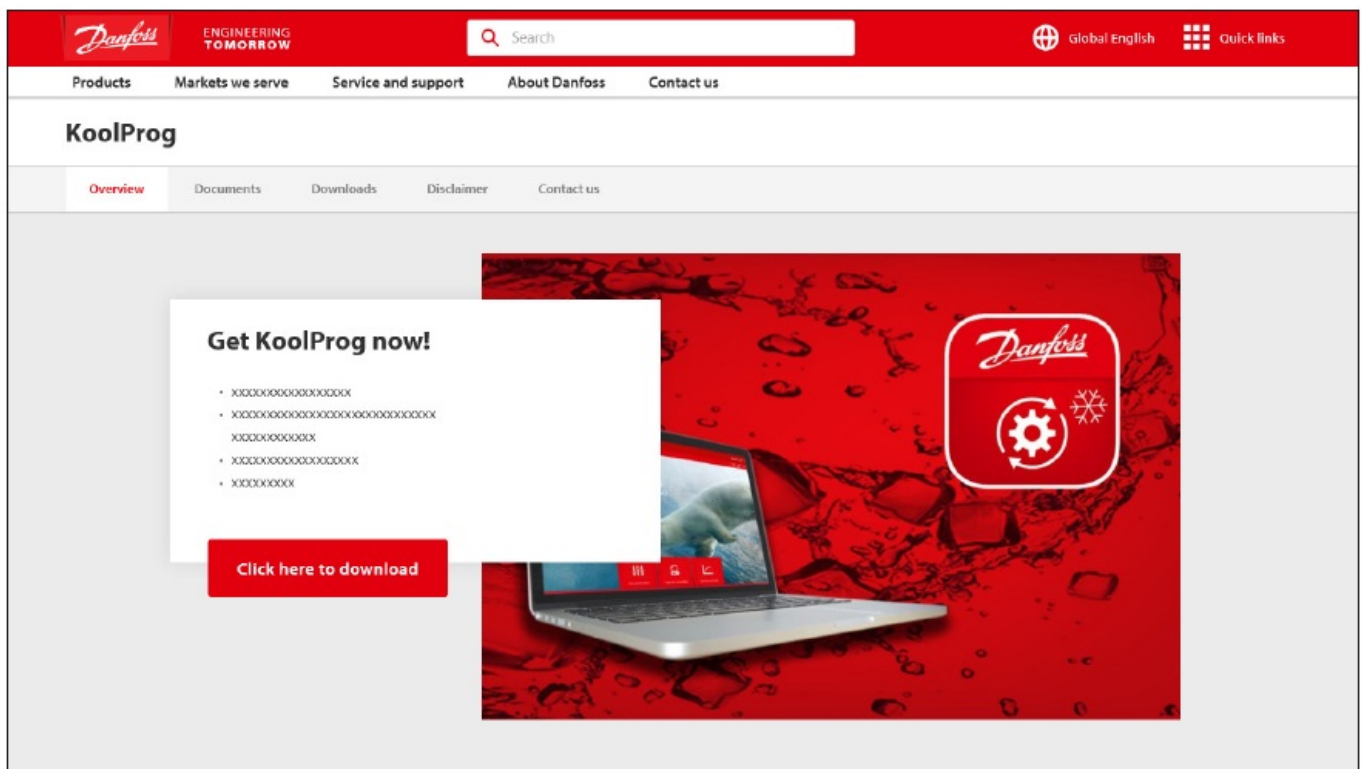
A: It is not recommended to run the setup directly from a Windows server or network file server.

Introduction

Configuring and testing the Danfoss electronic controllers has never been so easy with the new KoolProg PC software. With one KoolProg software, you can now take advantage of new intuitive features such as the selection of favorite parameter lists, writing online as well as offline program files, and monitoring or simulating alarm status activities. These are only some of the new features that will minimize the time R&D and production will spend on development, programming, and testing the Danfoss range of commercial refrigeration controllers. Supported Danfoss products: ETC 1H, ERC 111/112/113, ERC 211/213/214, EKE 1A/B/C, AK-CC55. The following instructions will guide you through the installation and first time usage of KoolProg®.

Downloading .exe file

Download KoolProgSetup.exe file from the location: <http://koolprog.danfoss.com>



System requirements

This software is intended for a single user and recommended system requirements as below.

OS	Windows 7, Windows 10, 32 bit and 64 bit
RAM	8 GB RAM
HD Space	200 GB and 250 GB
Required software	MS Office 2010 and above
Interface	USB 3.0

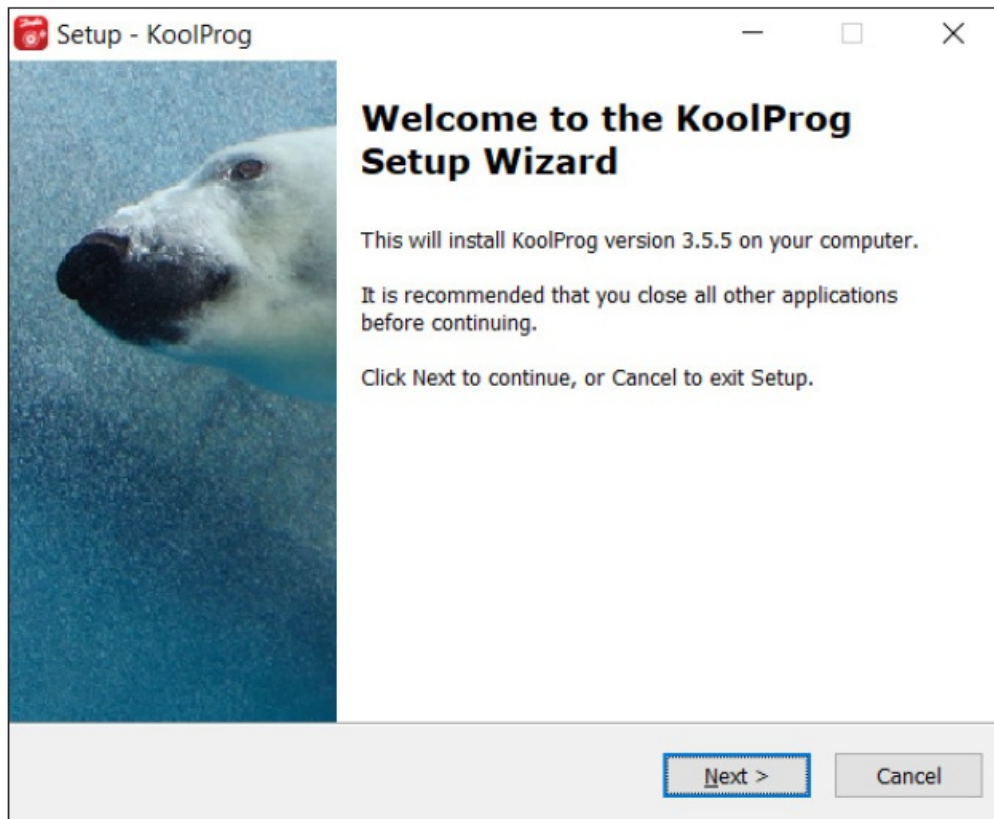
Macintosh operating system is not supported.

Running the setup directly from windows server or network file server is not recommended.

Installing software

- **Double click on the KoolProg® setup icon**

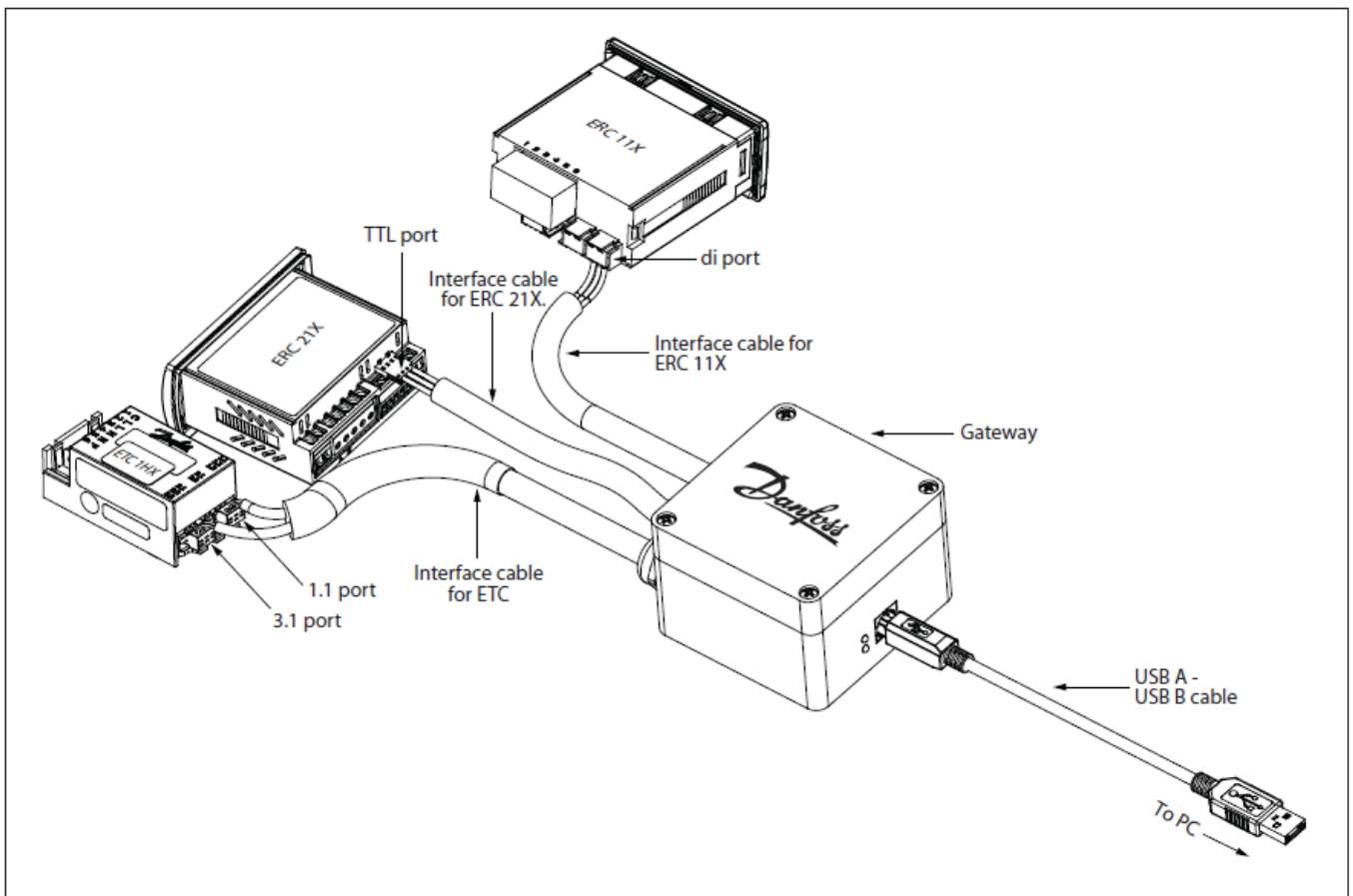
Run the installation wizard and follow the onscreen instructions to complete the KoolProg® installation.



Note: If you encounter a “Security warning” during installation, please click on “Install this driver software anyway”.

Connection with controllers

Fig 1. Connection for ERC and ETC using Danfoss gateway
(Code No. 080G9711)

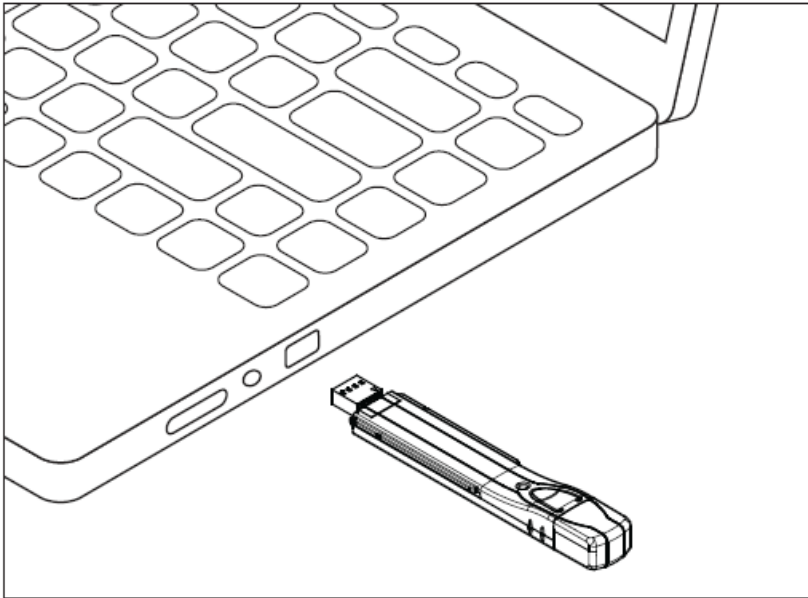


1. Connect USB cable to the PC's USB port
2. Connect the controller.

CAUTION: Please ensure that only one controller is connected at any time.

Fig 2. Mass programming of ERC using EKA 183A/B connection

Connect EKA programming key to USB port of PC/laptop and transfer the file in .erc format from computer to the programming key.



Transferring the file from EKA key to ERC controller:

Fig 2a. Transferring to ERC 11X

Insert EKA 183A(080G9740) into docking station (080G9701). Place ERC 11X controller on docking station and keep it pressed down until the successful programming indicator turns green.

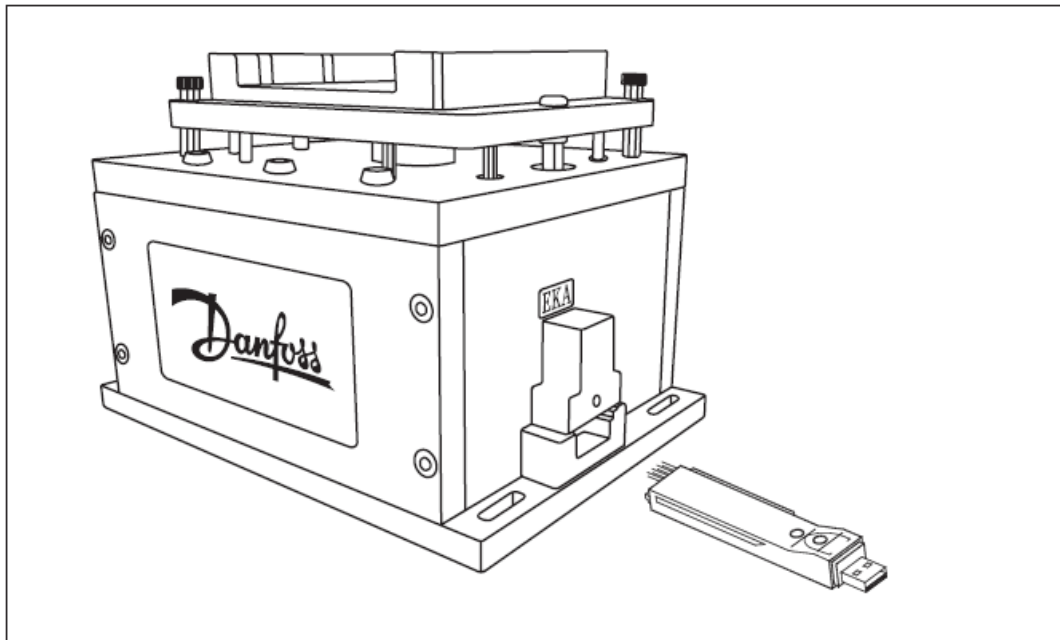
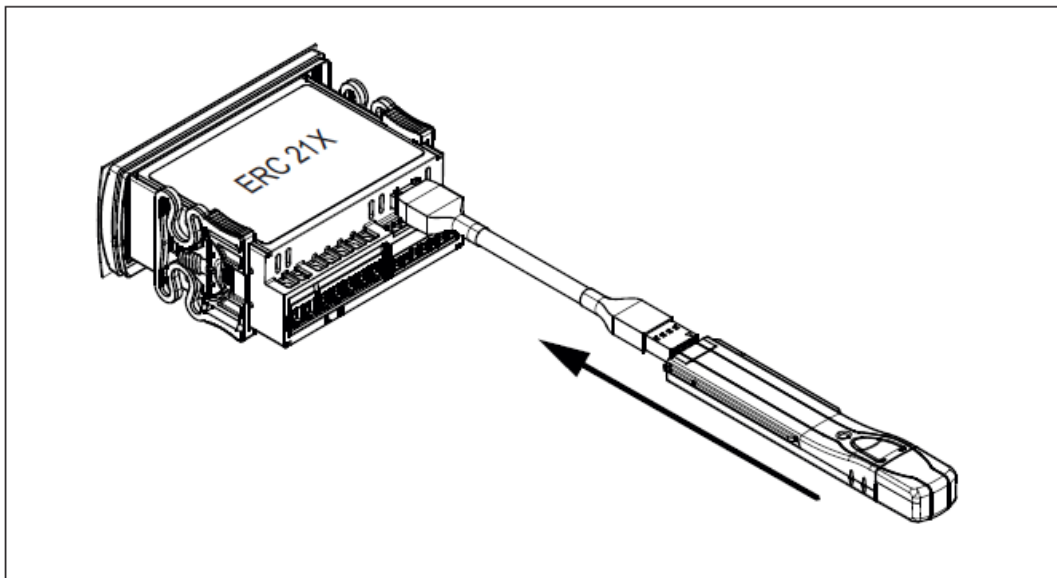


Fig 2b. Transferring to ERC 21X:

Insert EKA 183B (080G9741) into the TTL port of ERC 21X as shown in image below. Press the button to initiate transfer of file from EKA 183B to ERC21X.



For more information please refer to EKA 183B(080G9741) instruction sheet provided in the kit.

Fig 3. Connection for EKE using interface type MMIMYK
(Code No. 080G0073)

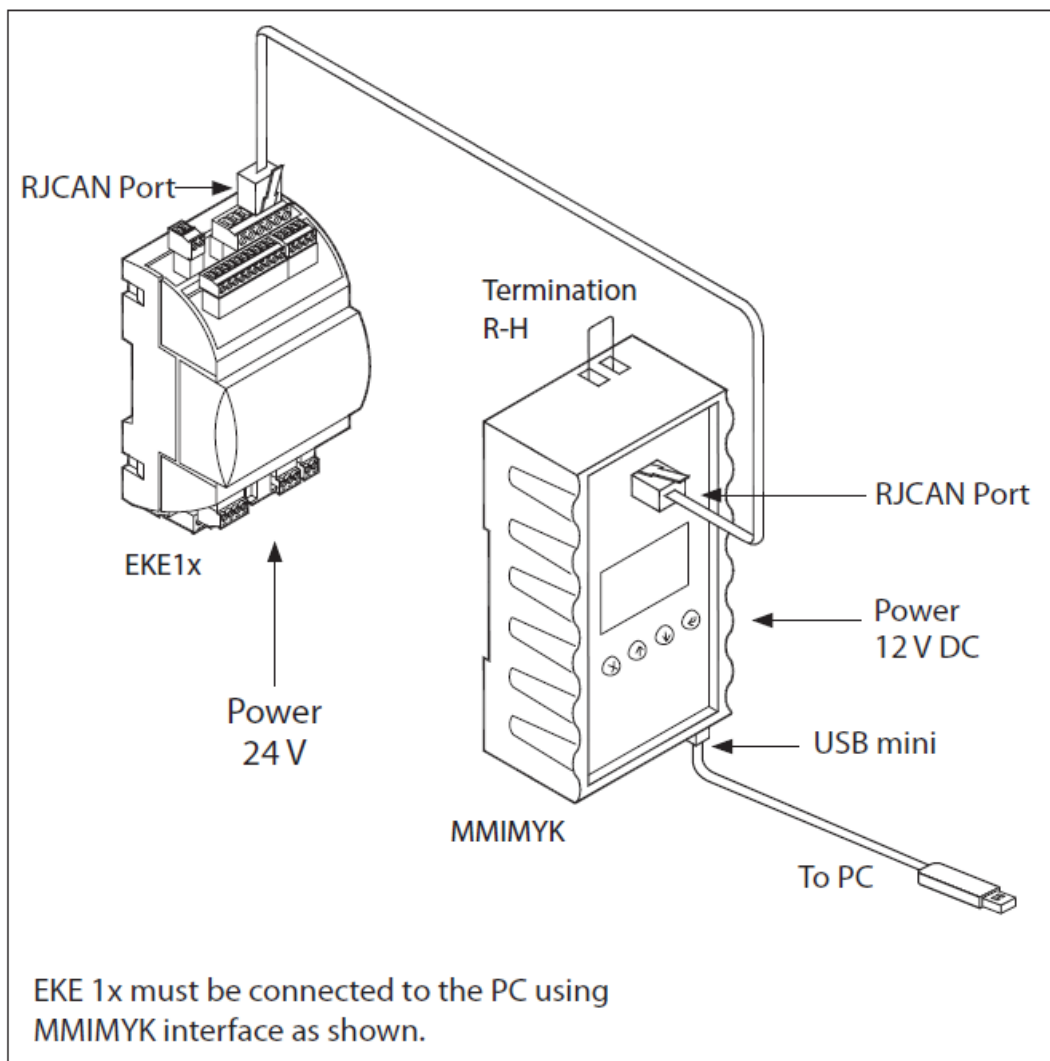
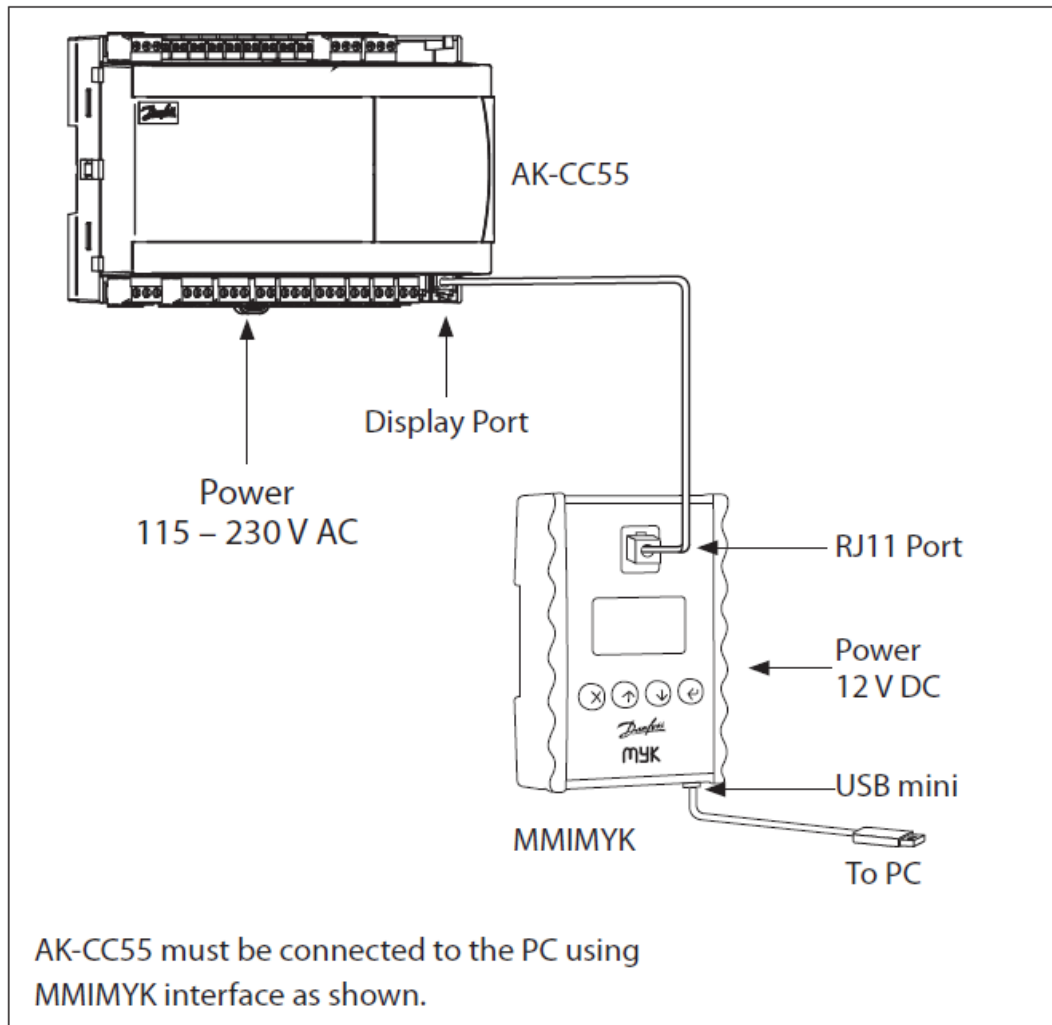


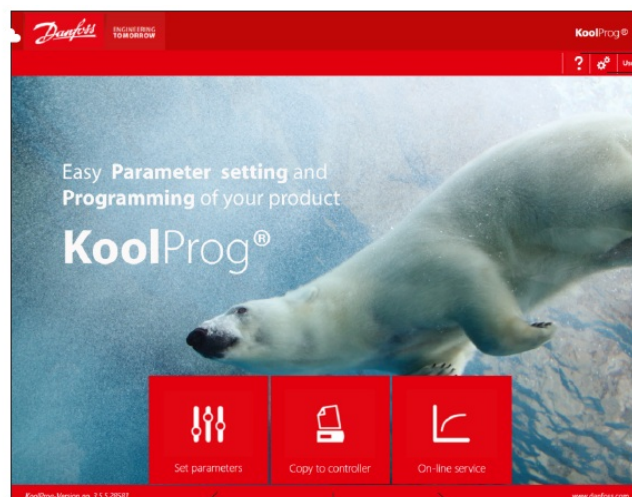
Fig 4. Connection for AK-CC55 using interface type MMIMYK
(Code No. 080G0073)



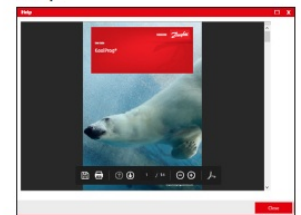
Starting the program



Double click on the desktop icon to launch KoolProg application



Help



Preferences



The program's features

To create new parameter setting files either importing from controller or offline.

To program parameter setting file and upgrade firmware in the connected controller

To edit settings/trend graphs of controller parameters in real-time.

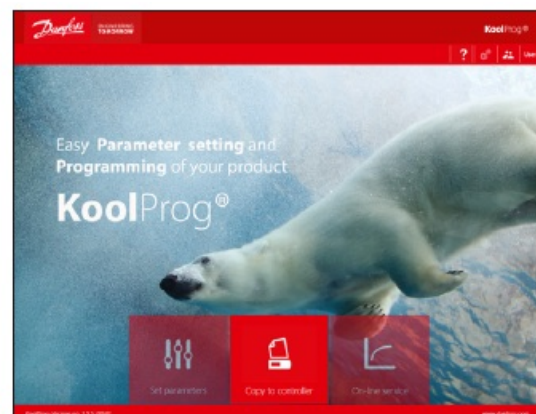
Choose the preferred language

Select the units you prefer to work with:
Metric (°C and bar)
Imperial (°F and PSI)

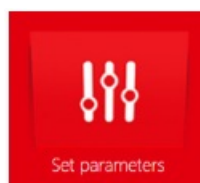
Password protection: If the program is password protected, it is possible to specify two different access levels: one with a password and one without a password.

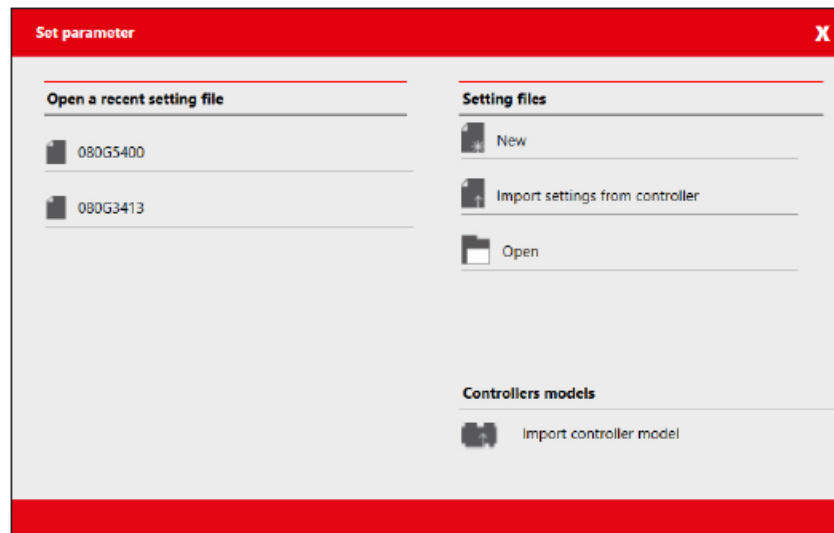
Accessibility

- Users with a password have access to all features.
- Users without a password have limited access and may only be able to use the 'Copy to controller' feature.



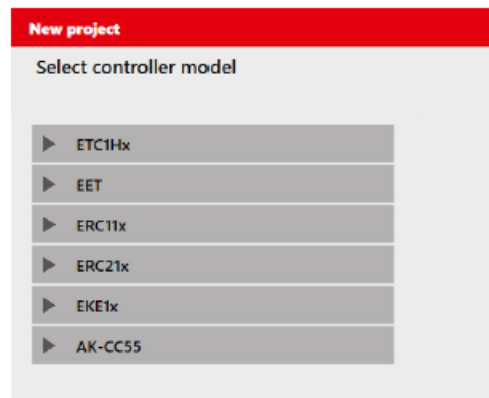
Set parameters





This feature allows you to configure parameter settings for your application. Click one of the icons in the right column to create a fresh configuration offline or import settings from a connected controller or open an already saved project. You can see projects you have already created under “Open a recent setting file”.

New



- Create new project by selecting:
 - Controller type
 - Part number (code number)
 - PV (product version) number
 - SW (software) version
- Once you have selected a file, you need to name the project.
- Click 'Finish' to proceed to view and set parameters.

New project
X

Give your project a good description and part number to identify it later


Code Number:

Product Version:

Give your project filename and description

Project Name (Max 20 Characters) *

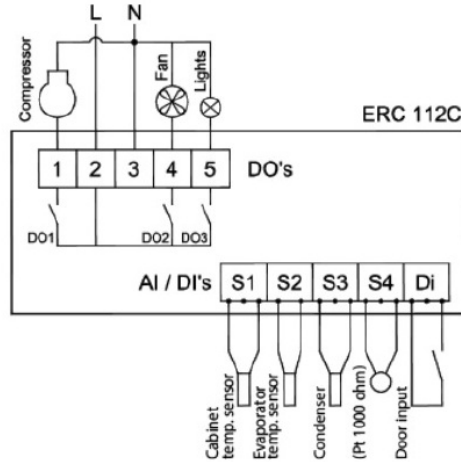
Project Description (Max 250 Characters)



The ERC 112C is a multipurpose refrigeration controller that includes temperature and defrost management. Cutting overall total cost level, it meets the requirements of today's advanced commercial applications. The ERC is perfect for refrigerated and heating restaurant equipment, bottle coolers, stainless steel refrigerators & freezers, beer coolers, light supermarket applications and many other uses.

Input/ Output highlights:
 * 5 inputs, 4 configurable and 1 digital

ERC112C
100 - 240 Va.c. SMPS



< BACK
FINISH
CANCEL

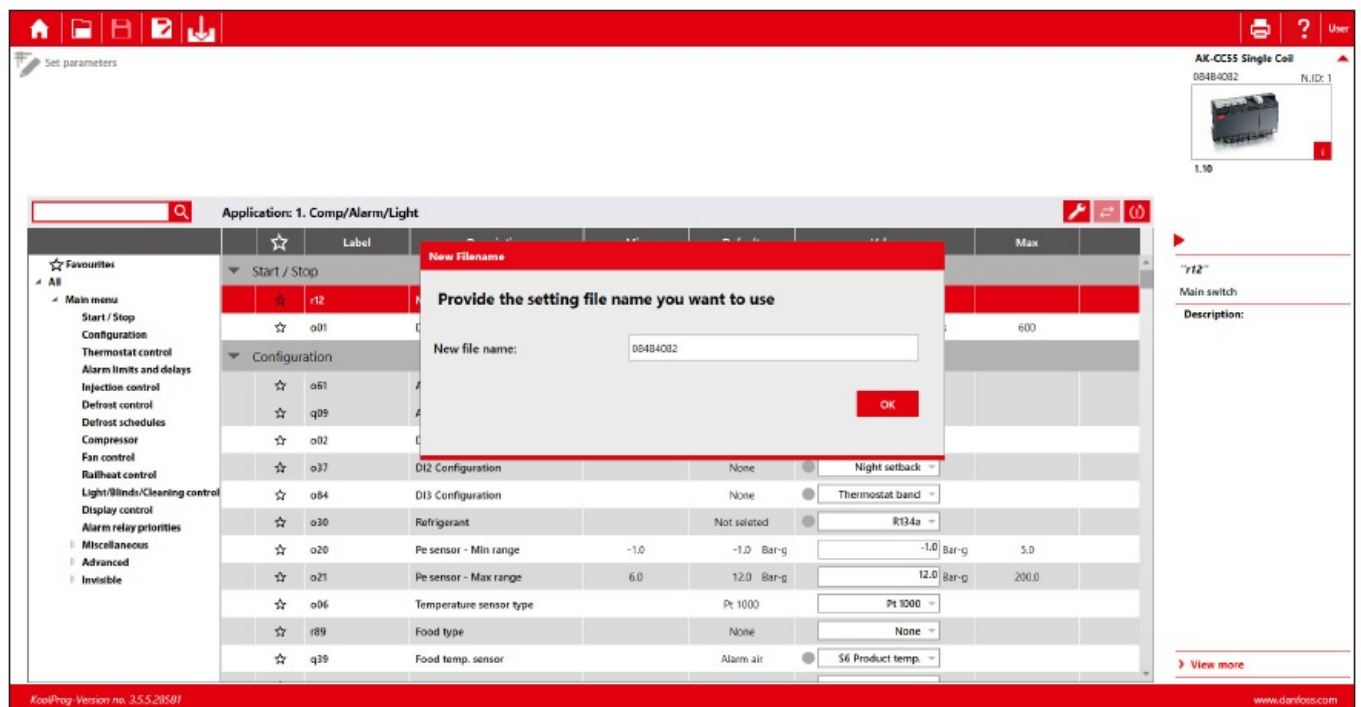
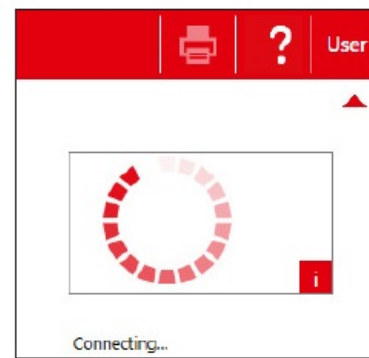
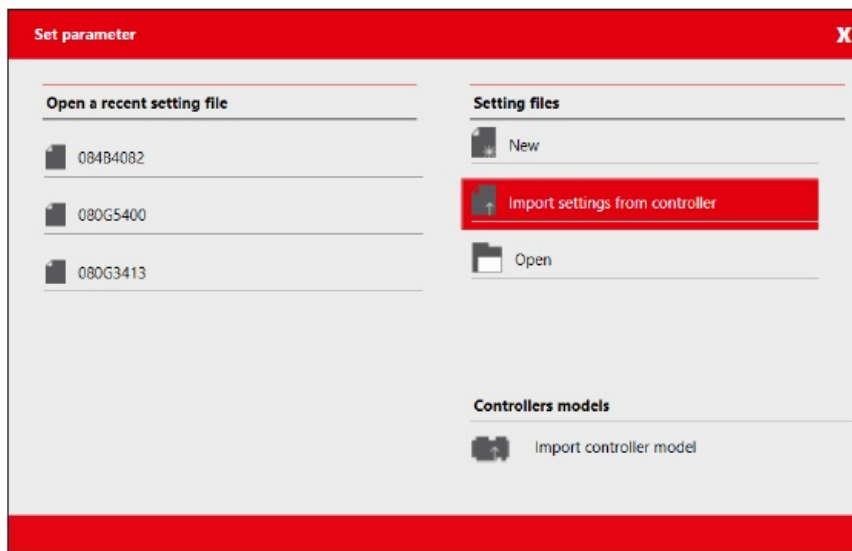
Note: Only standard code numbers are available to choose from in the “Code Number” field. To work offline with a non-standard code number (customer specific code number), use one of the following two methods:

1. Connect the controller of same code number with KoolProg using Gateway, and use “Import settings from Controller” to create a configuration file from it.
2. Use “Open” feature to open an existing locally saved file on your PC of same code number and create a new file from it.

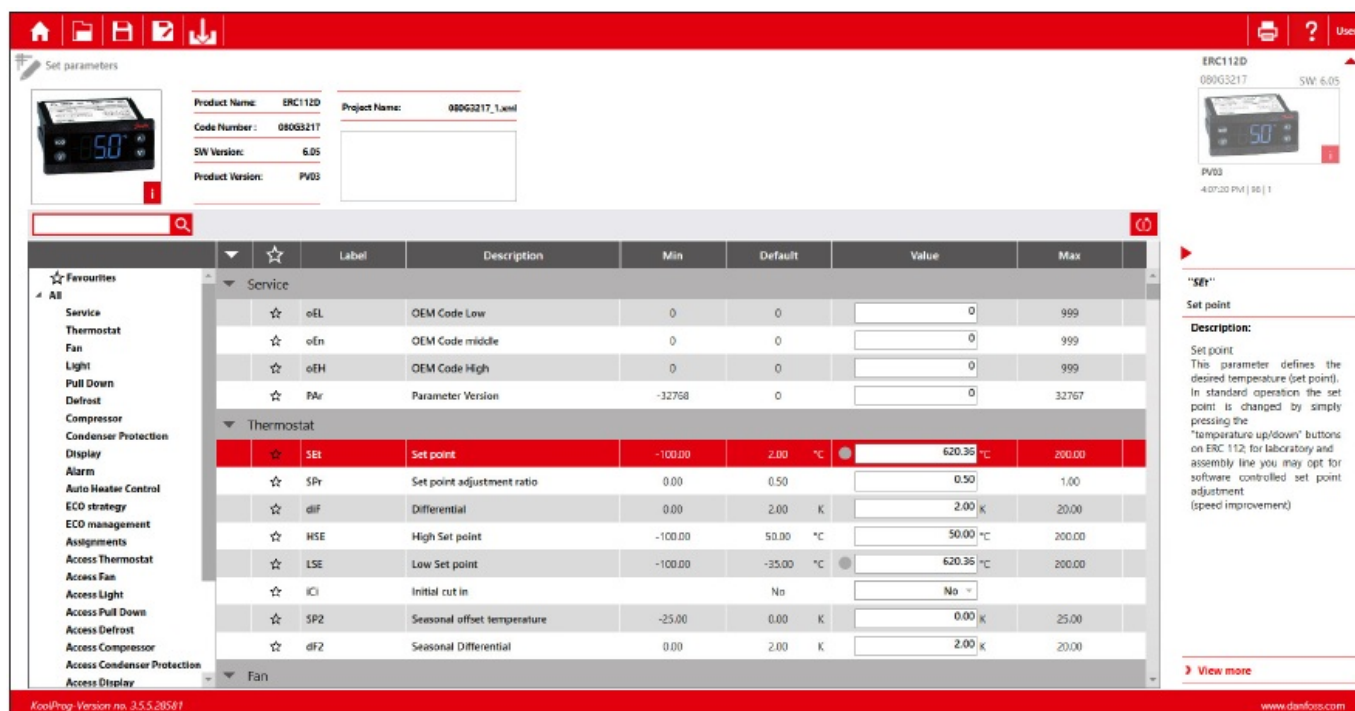
The new file, saved on your PC locally, can be accessed offline in future without having to connect the controller.


Import settings from controller

Allows you to import a configuration from connected controller to KoolProg and to modify the parameters offline. Select “Import settings from controller” to import all parameters and its details from the connected controller to the PC.

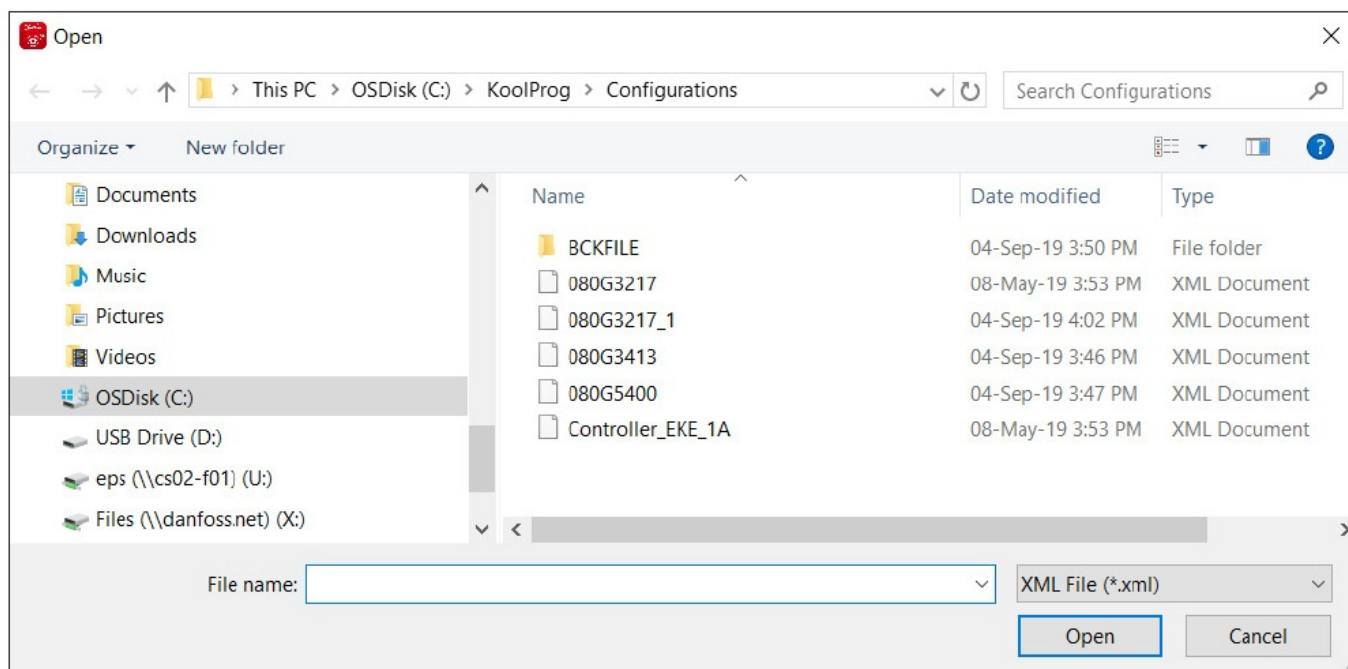


After "Import completed", save the imported setting file by providing the file name in the pop-up message box.




Now the parameter settings can be worked upon offline and can be written back to the controller by pressing “Export” . While working offline, the connected controller is shown grayed out and changed parameter values are not written to the controller until the export button is pressed.

Open 





Open” command lets you open setting files already saved to the computer. Once the command is clicked, a window will appear with a list of saved setting files.

All projects are stored here in the folder: “KoolProg/Configurations” by default. You can change the default file saving location in “Preferences” .

You can also open the setting files you have received from another source and saved in any folder using the browse option. Please note that KoolProg supports multiple file formats (xml, cbk) for different controllers. select

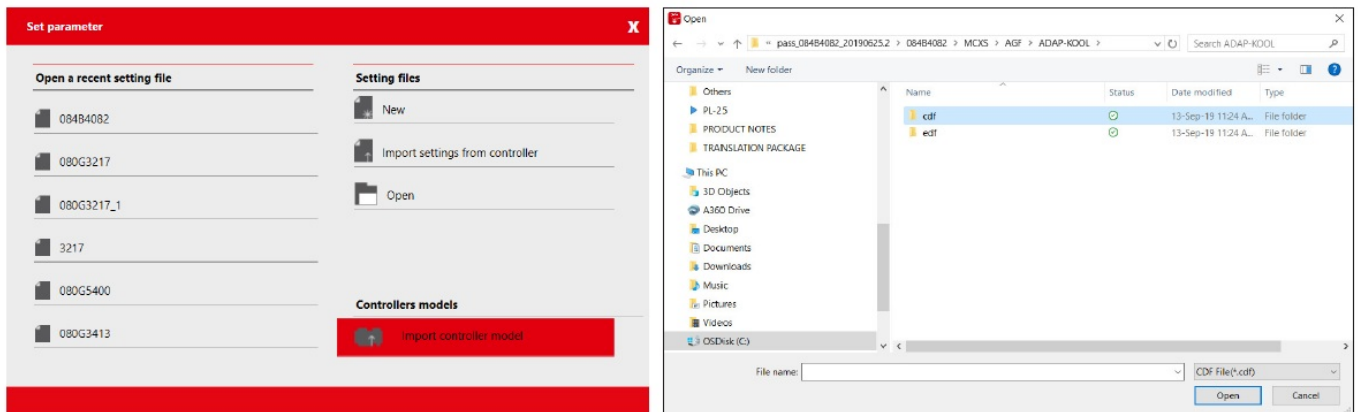
the appropriate setting file format of the controller you are using.

Note: .erc/.dpf format files of ERC/ETC controller are not visible here. A '.erc' or '.dpf' file saved on your PC can be opened in one of the following ways:

1. Select "New Project" and go all the way to Parameter list view of the same controller model. Select Open button  to browse and open .erc/.dpf file on your PC.
2. Select "Upload from controller" if you are connected to the same controller online and go to the parameter list view. Select Open button  to browse desired .erc/.dpf file and view it in KoolProg.
3. Select "Open" to open any other .xml file of the same controller, reach parameter list view screen, and there select Open button to browse and select .erc/ .dpf file to view and edit these files.






Import controller model (only for AK-CC55):

This allows you to import controller model (cdf) offline and generate database in KoolProg. This will allow you to create setting file offline without having controller connected to KoolProg. KoolProg can import the controller model (cdf file) saved to PC or any storage device.



Info

Headline

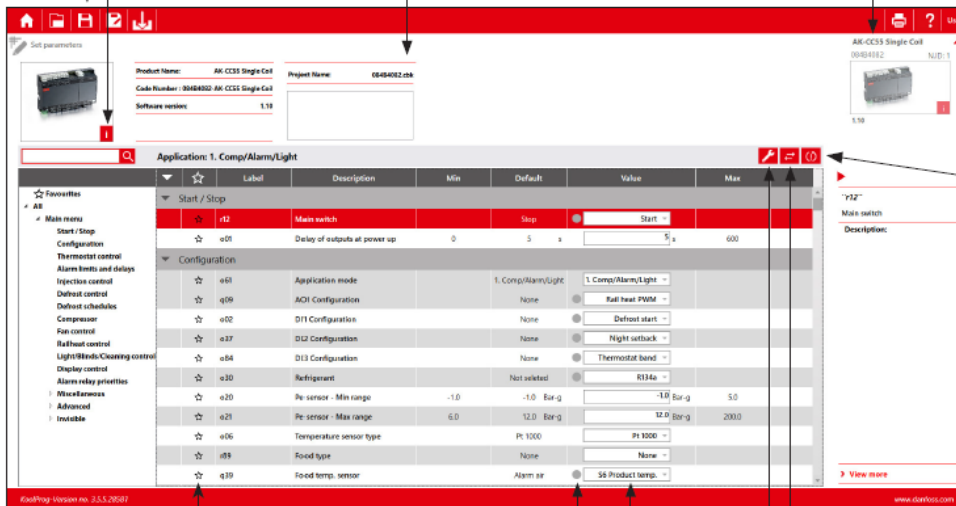
-  Home: The "Home" Command will take you back to the Start Menu.
-  Open: The "Open" command lets you open an existing project.
-  Save: The "Save" command lets you save all the changes in the active project.
-  Save as: The "Save as" Command allows you to save your controller settings as a new project.
-  Export: This command copies the parameter settings to the connected controller.

Informational Photos

The project's data is shown on the left.
The controller the program is connected to is shown on the right.

i = Controller information.

If the data are identical, these can then be transmitted to the controller.
If they are **not** identical, then these cannot be transmitted. A warning message pops up.



Arrow Up/Down

By clicking the arrow, you can hide the two photos and display more parameters in the window. Clicking it again causes the photos to reappear.

Factory reset

This command will reset the project/controller values to default factory settings.

Arrow Left/Right

By clicking the arrow, you can hide the description of the selected parameters. Clicking it again causes the description to reappear.

View more

This command gives the complete technical description of the controller.

Convert setting files (only for AK-CC55):
To convert setting files from one SW version to another software version of same controller type.

Quick setup wizard (only for AK-CC55):
Helps to set up the controller quickly by configuring a few critical parameters and starting the system.

Parameter settings field

Dot Symbol

A dot symbol will appear in front of a value if it has been modified and is no longer identical to its factory default setting.

Hint - Search Function

You can search for and display a specific parameter with the search function.
Type in the first few letters of the name of the parameter and click "Search".

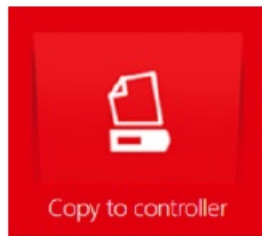
Favourites

You can select a number of parameters by ticking the ones you want in the "stars" column.

Afterwards they will be visible in the "Favourites" folder (first column at the top).

Quick setup wizard (only for AK-CC55):

User can run the quick setup both offline and online to set up the controller for the required application before moving on to the detailed parameter settings.



Here you can copy the setting files to the connected controller as well as upgrade the controller firmware. Firmware upgrade feature is only available for the selected controller model.

HOME

?

User

COPY TO CONTROLLER

Select file: C:\KoolProg\Configurations\080G3217.xml

BROWSE

SET AS FAVOURITE

Product Name: ERC112D

Code Number: 080G3217

SWVersion: 6.05

Product Version: PV03

FAVOURITE FILES

Project name	Project path	Controller type	Actions
080G3217	C:\KoolProg\Configurations\080G3217.xml	ERC112D	

ERC112D

080G3217

SW: 6.05

PV03

4:08:59 PM | 106 | 1

Single or multiple controller programming:

☒ Single controller programming

☐ Multiple controller programming

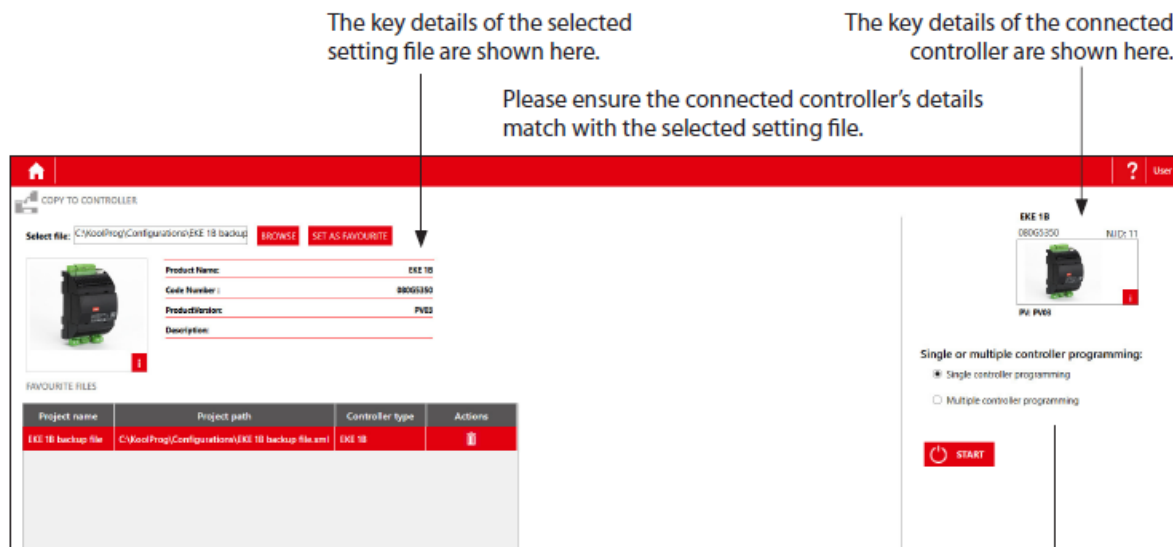
START

KoolProg - Version no. 3.5.5.26581

www.danfoss.com

Copy the setting files: Select the setting file you want to program with the “BROWSE” command. You can save a setting file in “Favorite Files” by clicking on the “Set as Favourite” button. The project will be added to the list and can be easily assessed later. (Click on the trash icon to remove a project from the list).

Once you have selected a setting file, the key details of the selected file are displayed.



If the project file and the connected controller match, data from the project file will be transmitted to the controller when you click the "START" button.

The program checks whether data can be transmitted.
If not, a warning message pops up.

Multiple Controller Programming

If you want to program multiple controllers with the same settings, use "Multiple Controller Programming."
Set the number of controllers to be programmed, connect the controller and click "START" to program the file - wait for the data to be transferred.

Connect the next controller and click "START" again.

Single or multiple controller programming:

- ☐ Single controller programming
☒ Multiple controller programming

Set Counter:

- ☒ CountUp Timer(0-...)
☐ Countdown Timer(...-0)

START

Counter: 0

Counter reset to start position ("0" or "Set counter" value).

Firmware upgrade (only for AK-CC55):

1. Browse the firmware file (Bin file) you want to program, selected firmware file details are displayed on the left hand side.
2. If the selected firmware file is compatible with connected controller, KoolProg enables the start button and will update the firmware. If it is not compatible, the start button remains disabled.
3. After the successful firmware update, controller restarts and displays the updated details of the controller.
4. This feature can be fully protected by password. If KoolProg is password protected, when you browse the firmware file, koolProg prompts for the password and one can load the firmware file only after entering correct password.

User

COPY TO CONTROLLER

Select file: C:\Users\U375558\Desktop\084B4082.BIN BROWSE

Product Name: AK-CC55 Single coil
Code Number: 084B4082
Software version: 1.10

FAVOURITE FILES

Project name	Project path	Controller type	Actions
084B4082	C:\KoolProg\Configurations\084B4082.cbk	AK-CC55 Single Coil	

AK-CC55 Single Coil
084B4082 N.ID: 1

1.10

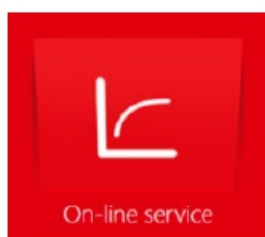
START

Copying firmware in progress 70 %

KoolProg - Version no. 3.5.5.28581

www.danfoss.com

On-line service



Allows you to monitor the real-time operation of the controller while it is running.

- You can monitor inputs and outputs.
- You can display a line chart based on parameters you have selected.
- You can configure settings directly in the controller.
- You can store line charts and settings and then analyze them.

Open
Allows you to view prior line charts you have made from collected data.

Save as
Allows you to save a project file containing all of the controller's settings.

Arrow Up/Down
Clicking the arrow allows you to hide the photo and the top block of information, so that more space is available on screen for parameters view.
Clicking the arrow again makes it reappear.

The screenshot shows the 'Parameters' tab of the AK-CC55 Single Coil interface. At the top, there are icons for 'Open' (a folder) and 'Save as' (a floppy disk). The main area is divided into sections: 'Readouts' with checkboxes for 'Control state A', 'Thermostat air temp. A', 'S4 Air OFF exp. A', and 'S3 Air ON exp. A'; 'Status' with a 'Manual control' button; 'Active alarms' showing 'A45 Main switch set OFF'; and a detailed description of the alarm. Below this is a table for 'Application 3: Comp/Alarm/Rail' with columns for Label, Description, Min, Default, Value, and Max. The table lists various parameters like 'Start / Stop', 'Delay of outputs at power up', 'Application mode', 'AO1 Configuration', 'DI1 Configuration', 'DI2 Configuration', 'DI3 Configuration', 'Refrigerant', 'Pt sensor - Min range', 'Pt sensor - Max range', and 'Temperature sensor type'. On the right, there is a 'Main switch' section with a description and a 'View more' link. The bottom of the screen shows the 'RoadProg' version and the 'www.danfoss.com' website.

The Trend Feature
If you want to chart the trend for a measurement, you can select what you want to view from this table. Tick the box of any parameter you would like to include in the chart. You can select a maximum of 10 parameters.

Line Chart
Click the "Line Chart" button to switch over to the trend view. You can begin charting any measurements you want in the trend view.

Alarms (only for AK-CC55):

Under the Alarms tab, the user can view the active and historical alarms present in the controller with a time stamp.

On-line service

Parameters Alarms Input/Output

Application: 1. Comp/Alarm/Light

	Label	Alarm	Active at	Cancelled at	Priority	
<div>All</div> <div>Active Alarms</div> <div>Cleared Alarms</div>	Active Alarms					
	E28	S6 product temp. A - Sensor error	01-Jan-00 12:55:31 AM	--	High	
	E27	S5 Evaporator A - Sensor error	01-Jan-00 12:55:31 AM	--	High	
	E26	S4 Air OFF evap. A - Sensor error	01-Jan-00 12:55:31 AM	--	High	
	E24	S2 Gas outlet A - Sensor error	01-Jan-00 12:55:31 AM	--	High	
	E20	Pe Evap. pressure A - Sensor error	01-Jan-00 12:55:31 AM	--	High	
	Cleared Alarms					
	E28	S6 product temp. A - Sensor error	01-Jan-00 12:40:56 AM	01-Jan-00 12:55:28 AM	High	
	E27	S5 Evaporator A - Sensor error	01-Jan-00 12:40:56 AM	01-Jan-00 12:55:28 AM	High	
	E26	S4 Air OFF evap. A - Sensor error	01-Jan-00 12:40:56 AM	01-Jan-00 12:55:28 AM	High	
E24	S2 Gas outlet A - Sensor error	01-Jan-00 12:40:56 AM	01-Jan-00 12:55:28 AM	High		
E20	Pe Evap. pressure A - Sensor error	01-Jan-00 12:40:56 AM	01-Jan-00 12:55:28 AM	High		
E27	S5 Evaporator A - Sensor error	01-Jan-00 12:00:03 AM	01-Jan-00 12:40:52 AM	High		
E26	S4 Air OFF evap. A - Sensor error	01-Jan-00 12:00:03 AM	01-Jan-00 12:40:52 AM	High		
E24	S2 Gas outlet A - Sensor error	01-Jan-00 12:00:03 AM	01-Jan-00 12:40:52 AM	High		

AK-CC55 Single Coil

08484082 NJD: 1

1.10

4:31:55 PM | 5 | 21 | 26

"E28"

S6 product temp. A - Sensor error

Control state A : Power up delay

Thermostat air temp. A : 180.0 °C

Thermostat cutout temp. : 2.0 °C

S6 product temp. : 180.0 °C

Description:

View more

KoolProg - Version no. 3.5.5.28581

www.danfoss.com

IO Status and Manual Override:

User can get an instant overview of configured inputs and outputs and their status under this group. User can test the output function and electrical wiring by putting controller into manual override mode and controlling the output manually by switching them ON and OFF.

On-line service

Parameters Alarms Input/Output

Main switch: ☐ Manual ☐ Stop ☒ Start

Application: 1. Comp/Alarm/Light

		I/O Point	I/O Function	Status	
<div>All</div> <div>AI Analog Input</div> <div>DI Digital Input</div> <div>AO Analog Output</div> <div>DO Digital Output</div>	AI Analog Input				
	☆	AI1	Pe Evap. pressure	-1.0 Bar.g	
	☆	AI2	S2 Gas outlet A	180.0 °C	
	☆	AI3	S3 Air ON evap. A	120.0 °C	
	☆	AI4	S4 Air OFF evap. A	180.0 °C	
	☆	AI5	S5 Evaporator A	180.0 °C	
	☆	AI6	S6 product temp.	180.0 °C	
	DI Digital Input				
	☆	DI1	Defrost start	OFF	
	☆	DI2	Night setback	OFF	
	☆	DI3	Thermostat band	OFF	
	AO Analog Output				
	☆	AO1	Rail heat PWM	100 %	
	DO Digital Output				
	☆	DO1	AKV opening A	10 %	

AK-CC55 Single Coil

08484082 NJD: 1

1.10

4:31:24 PM | 1001 | 126 | 28 | 56

"AI1"

Pe Evap. pressure

Description:

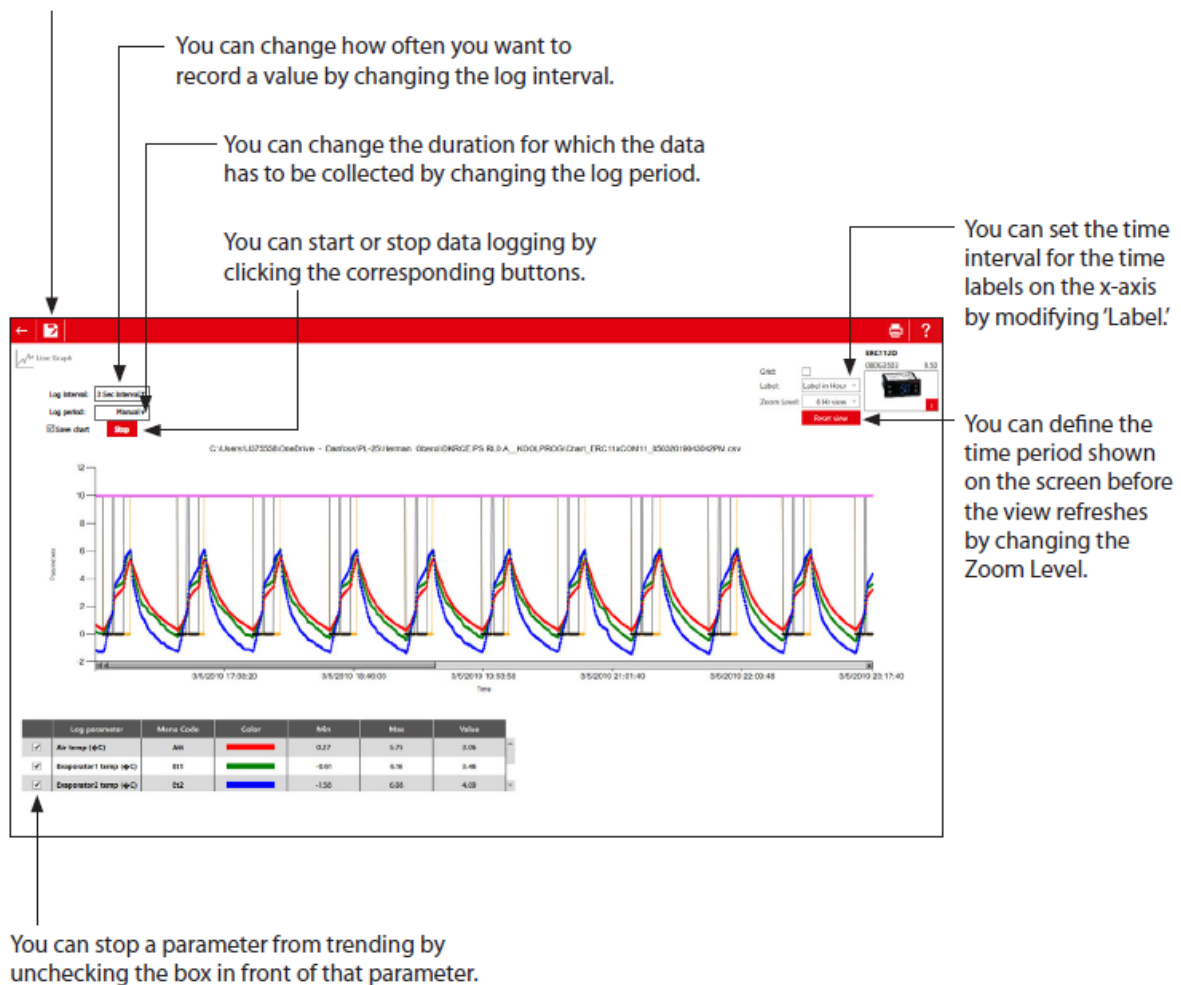
View more

KoolProg - Version no. 3.5.5.28581

www.danfoss.com

Trend Charts

The program only saves data if the "Save chart" box is checked.
If you want to save the collected data in another file format, use the "Save As" command. This enables you to save data in either a .CSV or .PNG file format.
After saving an image, the chart can be viewed later in selected file format.



Unknown controller support

(Only for ERC 112 & ERC 113 controllers)

If a new controller is connected, the database of which is not already available in the KoolProg, you can still connect to the controller in online mode. Select either "Upload from Controller" in set parameters or "Service and test" to view parameter list of the connected controller. All new parameters of connected controller will be displayed under separate menu group "New Parameters". User can edit the parameter settings of connected controller and save the setting file on PC to mass program using "Programming EKA 183A (Code no. 080G9740)".

Note: saved setting file created in this way cannot be reopened in KoolProg.

Fig 5a. Unknown controller connection under "Upload from controller":

New Parameters

	Label	Description	Min	Default	Value	Max
☆	SE2	SE2	-100.00	10.00	10.00	200.00
☆	dI2	dI2	0.00	2.00	2.00	20.00
☆	HS2	HS2	-100.00	50.00	50.00	200.00
☆	LS2	LS2	-100.00	-35.00	-35.00	200.00
☆	dIA	dIA	0	0	0	1
☆	FC2	FC2	0	0	0	2
☆	F02	F02	0	0	0	900
☆	FS2	FS2	0	0	0	900
☆	dOn	dOn	0	20	20	100
☆	HC1	HC1	0	10	10	240
☆	dH1	dH1	-50.00	10.00	10.00	50.00
☆	dSd	dSd	0	0	0	120
☆	dF2	dF2	0	0	0	3
☆	dE2	dE2	-50.00	-50.00	-50.00	0.00

Fig 5b. Unknown controller connection under "Service and test":

New Parameters

	Label	Description	Min	Default	Value	Max
☆	<input checked="" type="checkbox"/> SE2	SE2	-100.00	10.00	10.00	200.00
☆	<input type="checkbox"/> dI2	dI2	0.00	2.00	2.00	20.00
☆	<input type="checkbox"/> HS2	HS2	-100.00	50.00	50.00	200.00
☆	<input type="checkbox"/> LS2	LS2	-100.00	-35.00	-35.00	200.00
☆	<input type="checkbox"/> dIA	dIA	0	0	0	1
☆	<input type="checkbox"/> FC2	FC2	0	0	0	2
☆	<input type="checkbox"/> F02	F02	0	0	0	900
☆	<input type="checkbox"/> FS2	FS2	0	0	0	900
☆	<input type="checkbox"/> dOn	dOn	0	20	20	100
☆	<input type="checkbox"/> HC1	HC1	0	10	10	240
☆	<input type="checkbox"/> dH1	dH1	-50.00	10.00	10.00	50.00
☆	<input type="checkbox"/> dSd	dSd	0	0	0	120
☆	<input type="checkbox"/> dF2	dF2	0	0	0	3

Please contact your nearest sales representative for further assistance.

Please contact your nearest sales representative for further assistance.

Danfoss can accept no responsibility for possible errors in catalogues, brochures and other printed material. Danfoss reserves the right to alter its products without notice. This also applies to products already on order provided that such alterations can be made without subsequent changes being necessary in specifications already agreed.

All trademarks in this material are property of the respective companies. Danfoss and the Danfoss logotype are trademarks of Danfoss A/S. All rights reserved.

<http://koolprog.danfoss.com>

Documents / Resources



[Danfoss Kool Prog PC Software](#) [pdf] User Guide

Kool Prog PC Software, Kool Prog PC Software, Prog PC Software, PC Software, Software

References

- [User Manual](#)

Manuals+, Privacy Policy

This website is an independent publication and is neither affiliated with nor endorsed by any of the trademark owners. The "Bluetooth®" word mark and logos are registered trademarks owned by Bluetooth SIG, Inc. The "Wi-Fi®" word mark and logos are registered trademarks owned by the Wi-Fi Alliance. Any use of these marks on this website does not imply any affiliation with or endorsement.