

Danfoss KE07205 Ramped Valve Driver



Danfoss KE07205 Ramped Valve Driver Instructions

[Home](#) » [Danfoss](#) » Danfoss KE07205 Ramped Valve Driver Instructions 

Contents

- [1 Danfoss KE07205 Ramped Valve Driver](#)
- [2 GENERAL DESCRIPTION](#)
- [3 DIMENSION AND CONNECTION DIAGRAM](#)
- [4 OUTPUT CHARACTERISTICS](#)
- [5 ADJUSTMENTS](#)
- [6 Documents / Resources](#)
 - [6.1 References](#)
- [7 Related Posts](#)



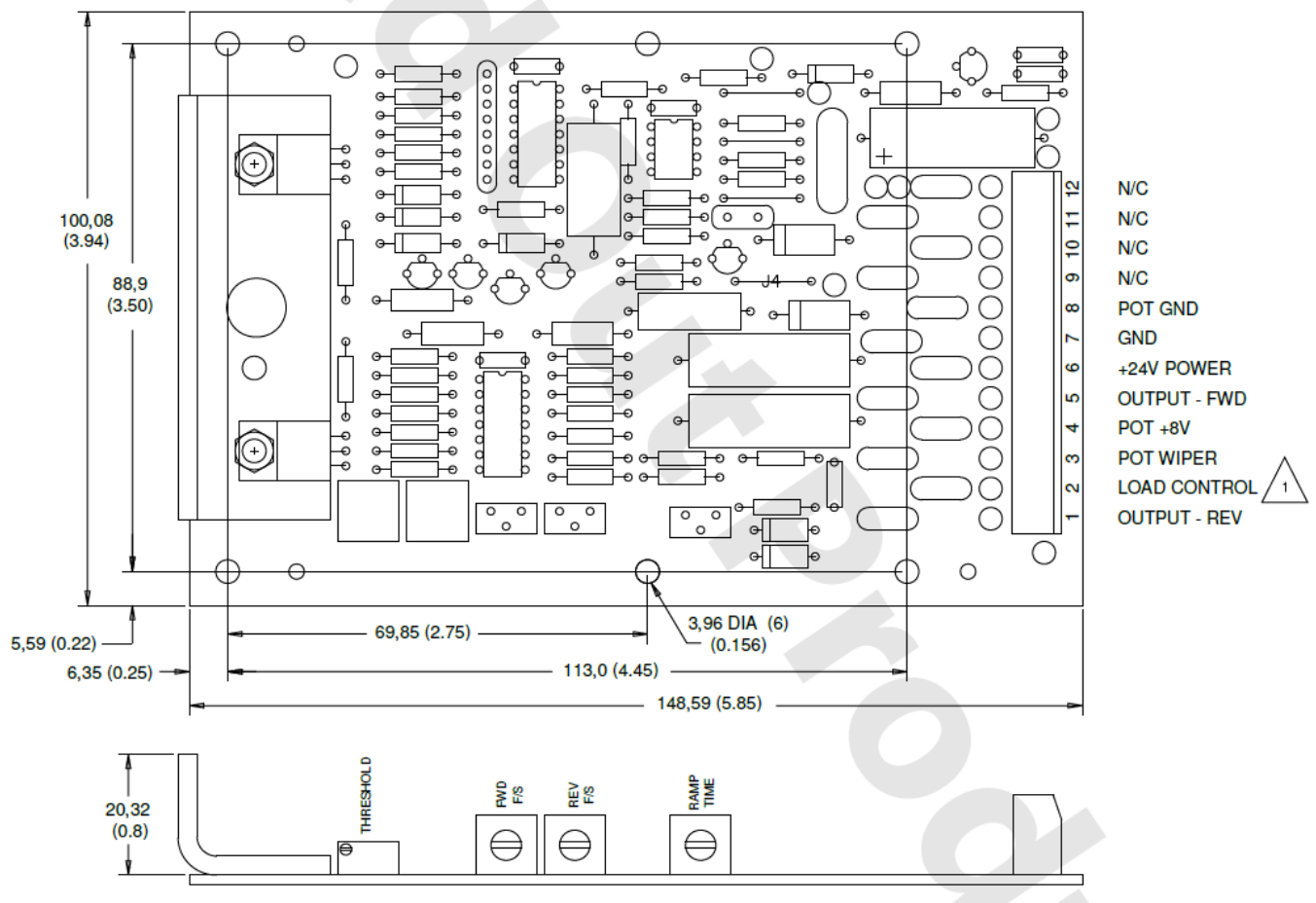
Danfoss KE07205 Ramped Valve Driver



GENERAL DESCRIPTION

This device is a ramped valve driver which accepts a setpoint potentiometer input from a control handle and drives a dual coil proportional valve. It is pulse-width modulated and has adjustable acceleration/deceleration ramping. The threshold, full stroke forward and full stroke reverse outputs are adjustable. The KE07205 is a direct replacement for the MXX458 or the MXX1139. It is the same as the KE07203 except it has a 3.4 volt reference for null.

DIMENSION AND CONNECTION DIAGRAM



WHEN USED WITH LOAD CONTROL, CONNECT LOAD CONTROL OUTPUT TO TERMINAL 2 AND REMOVE JUMPER J4

Dimensions in millimeters (inches).

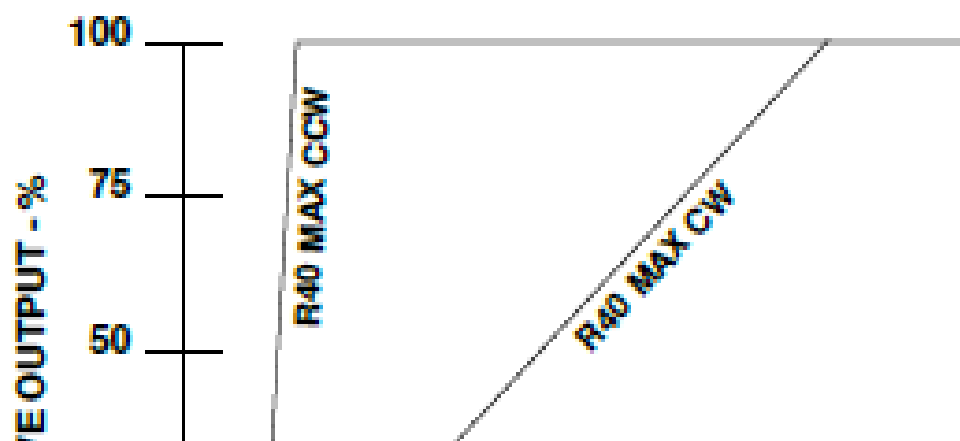
OUTPUT CHARACTERISTICS

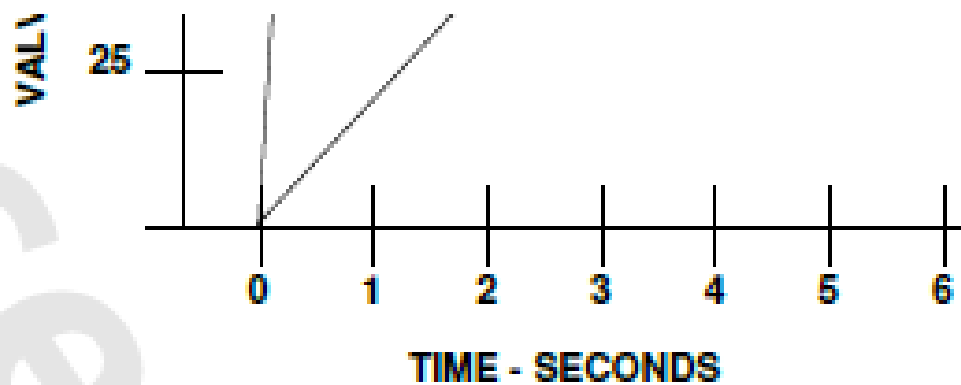
- **SUPPLY VOLTAGE** 24 Vdc
- **PWM FREQUENCY** 100 Hz
- **OUTPUT CURRENT** 0.7 A
- **FACTORY SETTINGS WITH 26 OHM LOAD**

Threshold: 200 mA

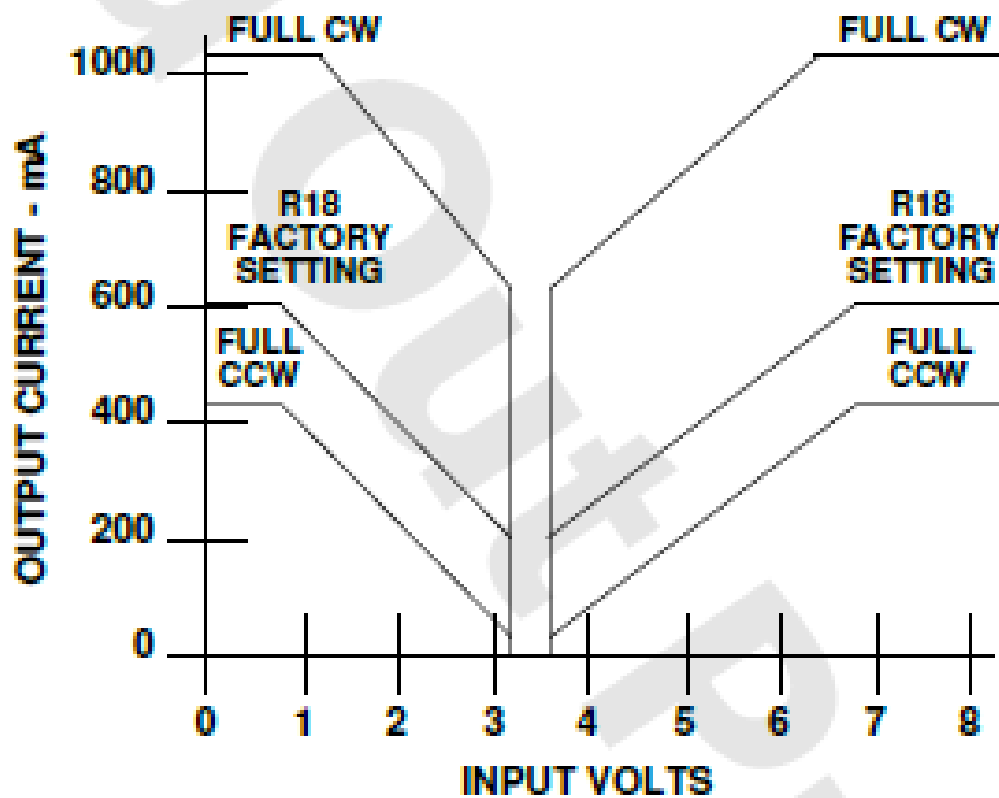
Full Stroke 600 mA

ADJUSTMENTS



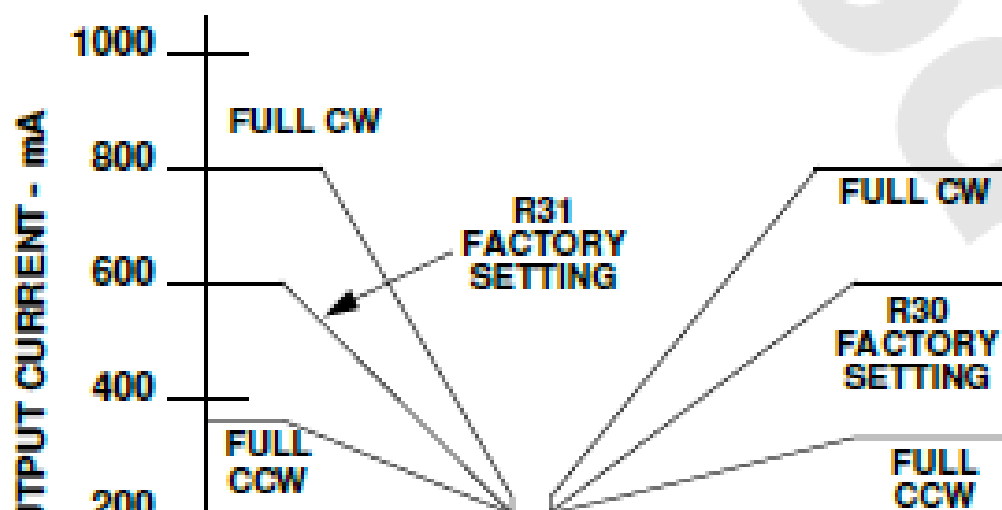


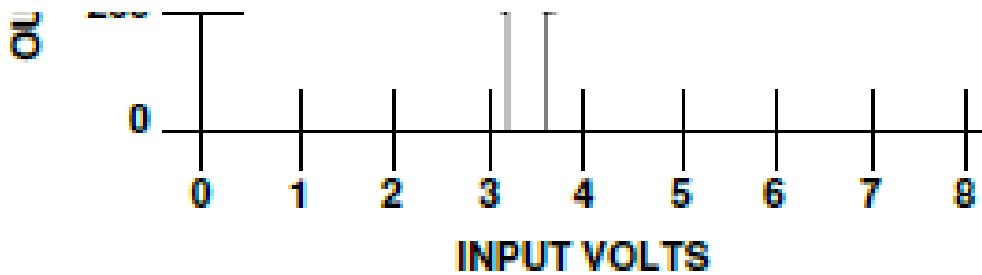
1679



1696

Threshold adjustment.

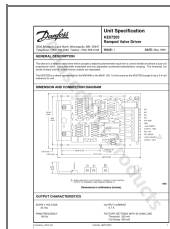




1697

Full stroke adjustment.

Documents / Resources



[Danfoss KE07205 Ramped Valve Driver](#) [pdf] Instructions
KE07205 Ramped Valve Driver, KE07205, Ramped Valve Driver, Valve Driver

References

- [User Manual](#)

[Manuals+.](#) [Privacy Policy](#)

This website is an independent publication and is neither affiliated with nor endorsed by any of the trademark owners. The "Bluetooth®" word mark and logos are registered trademarks owned by Bluetooth SIG, Inc. The "Wi-Fi®" word mark and logos are registered trademarks owned by the Wi-Fi Alliance. Any use of these marks on this website does not imply any affiliation with or endorsement.