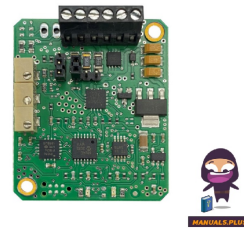


Danfoss KE07201 Ramped Valve Driver



Danfoss KE07201 Ramped Valve Driver Instruction Manual

[Home](#) » [Danfoss](#) » Danfoss KE07201 Ramped Valve Driver Instruction Manual 

Contents

- [1 Danfoss KE07201 Ramped Valve Driver](#)
- [2 Product Information](#)
- [3 Product Usage Instructions](#)
- [4 Frequently Asked Questions](#)
- [5 GENERAL DESCRIPTION](#)
- [6 DIMENSION AND CONNECTION DIAGRAM](#)
- [7 OUTPUT CHARACTERISTICS](#)
- [8 ADJUSTMENTS](#)
- [9 Documents / Resources](#)
 - [9.1 References](#)



Danfoss KE07201 Ramped Valve Driver

Output Current – mA: VALVE OUTPUT – % R40 MAX CCW / R40 MAX CW

Product Usage Instructions

Installation

1. Connect the power and output connections using the 4-pin sealed Packard shroud connector.
2. Connect the setpoint potentiometer using the 3-pin (female) sealed Packard tower connector.
3. Refer to the bag assembly with mounting hardware for installation guidance.

Adjustments

1. To adjust the threshold, locate and modify the R18 Factory Setting.
2. To adjust the full stroke, locate and modify the R31 Factory Setting.

Maintenance

Regularly check for any loose connections or signs of wear and tear. Clean the device as needed to ensure proper functioning.

Troubleshooting

If experiencing issues with the device not responding correctly, refer to the user manual for troubleshooting steps or contact customer support.

Frequently Asked Questions

Q: What is the supply voltage for the device?

A: The supply voltage for the device is 24 Vdc.

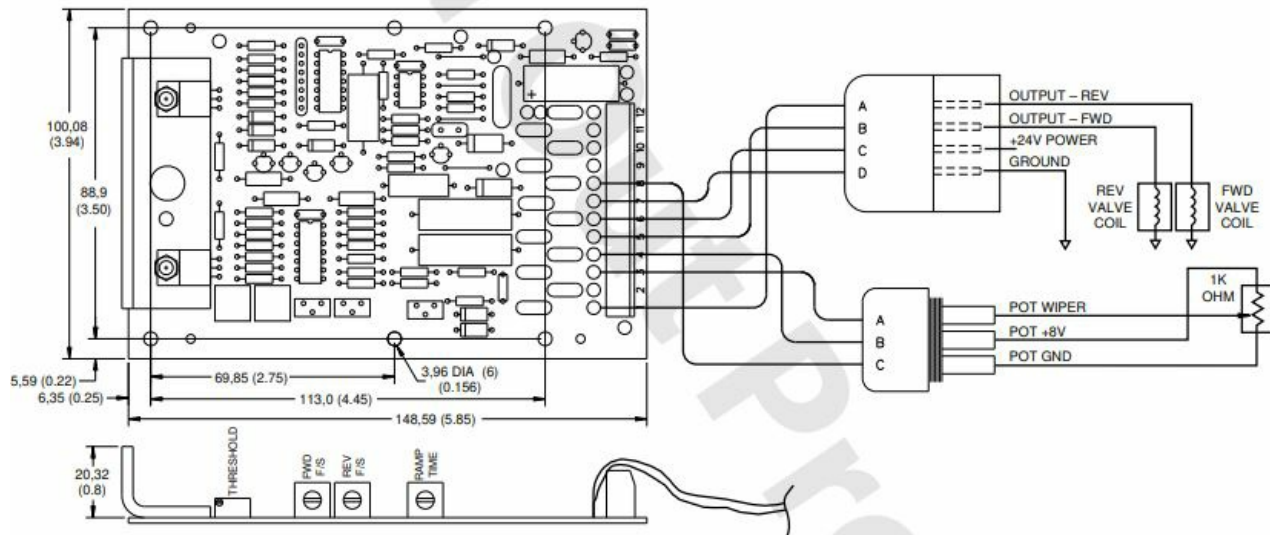
Q: How do I adjust the threshold setting?

A: To adjust the threshold setting, locate and modify the R18 Factory Setting as per the user manual instructions.

GENERAL DESCRIPTION

This device is a ramped valve driver that accepts a setpoint potentiometer input from a control handle and drives a dual coil proportional valve. It is pulse-width modulated and has adjustable acceleration/deceleration ramping. The threshold, full stroke forward and full stroke reverse outputs are adjustable. It has a 12" pigtail with a 4-pin sealed Packard shroud connector for the power and output connections and a 12" pigtail with 3-pin (female) sealed Packard tower connector for the setpoint potentiometer connections. A bag assembly with mounting hardware is shipped with the device. For mating connectors order bag assemblies K03384, 4-pin (female) tower connector and K08630, 3-pin shroud connector.

DIMENSION AND CONNECTION DIAGRAM

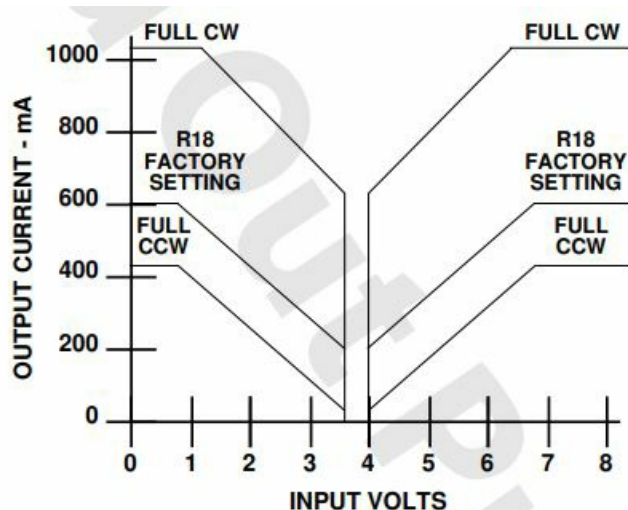


Dimensions in millimeters (inches).

OUTPUT CHARACTERISTICS

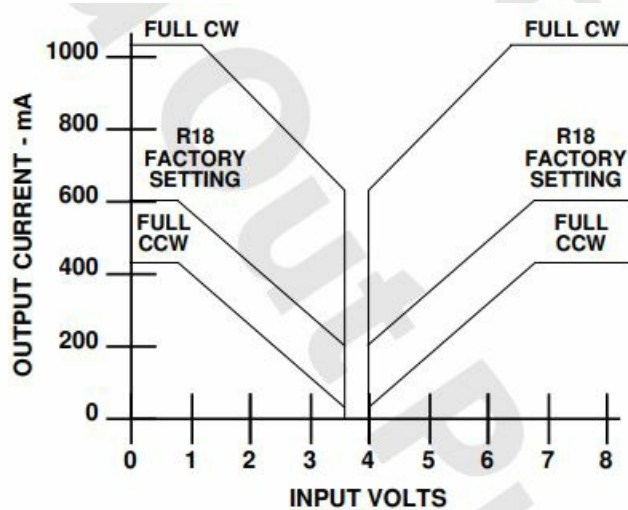
- SUPPLY VOLTAGE
 - 24 Vdc
- PWM FREQUENCY
 - 100 Hz
- OUTPUT CURRENT
 - 0.7 A
- FACTORY SETTINGS WITH 26 OHM LOAD
 - Threshold: 200 mA
 - Full Stroke 600 mA

ADJUSTMENTS



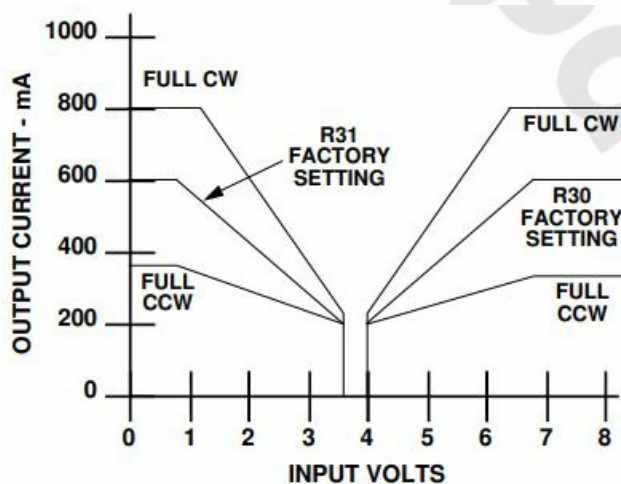
1680

Threshold adjustment.



1680

Threshold adjustment.



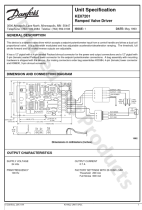
1681

Full stroke adjustment.

3500 Annapolis Lane North, Minneapolis, MN 55447

- Telephone: (763) 509-2084
- Telefax: (763) 559-0108

Documents / Resources

	<p>Danfoss KE07201 Ramped Valve Driver [pdf] Instruction Manual KE07201 Ramped Valve Driver, KE07201, Ramped Valve Driver, Valve Driver</p>
---	---

References

- [User Manual](#)

[Manuals+](#), [Privacy Policy](#)

This website is an independent publication and is neither affiliated with nor endorsed by any of the trademark owners. The "Bluetooth®" word mark and logos are registered trademarks owned by Bluetooth SIG, Inc. The "Wi-Fi®" word mark and logos are registered trademarks owned by the Wi-Fi Alliance. Any use of these marks on this website does not imply any affiliation with or endorsement.