



Danfoss Icon2 RT
Featured Sensor



Danfoss Icon2 RT Featured Sensor User Guide

[Home](#) » [Danfoss](#) » Danfoss Icon2 RT Featured Sensor User Guide 

Contents

- 1 [Danfoss Icon2 RT Featured Sensor](#)
- 2 [Product Specifications](#)
- 3 [Product Usage Instructions](#)
- 4 [Menu structure](#)
- 5 [Remove and recycle batteries](#)
- 6 [Documents / Resources](#)
 - 6.1 [References](#)
- 7 [Related Posts](#)



Danfoss Icon2 RT Featured Sensor



Product Specifications

- **Model:** Danfoss Icon2 RT
- **Variants:** RT Featured and Sensor
- **Part Number:** AN41895354954501-010201 / 088R0401
- **Frequency:** 2.4 GHz (Zigbee)
- **IP Class:** 20
- **Transmission power:** <10 mW
- **Power supply:** 2 x 1,5 V AAA-Alkaline batteries
- **Ambient temperature, storage:** –20 °C to +65 °C
- **Ambient temperature, use:** 0 °C to 40 °C
- **Purpose of device:** Temperature and humidity sensor
- **Temperature for ball pressure test:** 75°C
- **Pollution degree:** PD2
- **Software Class:** A

Product Usage Instructions

Installation:

Follow these steps to install your Danfoss Icon2 RT:

1. Choose a suitable location on the wall for mounting.
2. Ensure the device is within range of your Zigbee network.
3. Mount the device securely using appropriate hardware.

Pairing with App:

To pair your device with the Danfoss Icon2 app:

1. Download and install the Danfoss Icon2 app from the app store.
2. Follow the in-app instructions to pair your device with the app.
3. Once paired, you can control your device remotely via the app.

Usage:

Use the Danfoss Icon2 RT to control and monitor your heating system:

- Adjust temperature settings.
- View current room temperature.
- Create schedules for heating operation.

Maintenance:

Regularly check the device for any dust or debris accumulation. Clean with a soft, dry cloth if necessary.

Frequently Asked Questions (FAQ):

• **Q: What is the range of the Zigbee network for the Danfoss Icon2 RT?**

A: The range can vary based on environmental factors, but typically extends up to 50 meters indoors.

• **Q: Can I use the Danfoss Icon2 RT without the app?**

A: Yes, the device can function independently without the app, but using the app provides remote control capabilities.

SIMPLIFIED EU DECLARATION OF CONFORMITY

Hereby, Danfoss A/S declares that the radio equipment type Danfoss Icon2 RT, RT Featured and Sensor are in compliance with Directive 2014/53/EU.

The full text of the EU Declaration of Conformity is available at the following internet address:
heating.danfoss.com

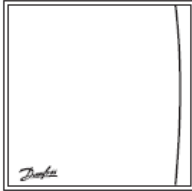
Menu structure

Danfoss Icon2™ RT and Icon2™ Featured RT

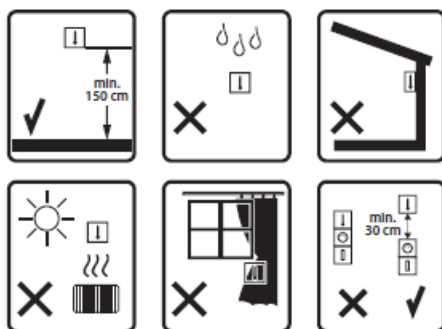
Danfoss Icon2™ Sensor

Menu			
3 Sec.		ME. 1	Min. 5 °C Max. 35 °C
		ME. 2	Product ID / Version
		ME. 3	Link Test
3 Sec.		*ME. 4	
		*ME. 5	Min. 18 °C Max. 35 °C
		ME. 6	Reference Room
		ME. 7	Cooling ON/OFF

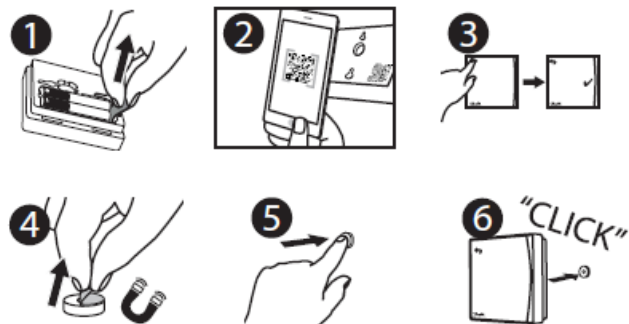
*Only Danfoss Icon2 Featured RT


 No menu

RT / Sensor placement

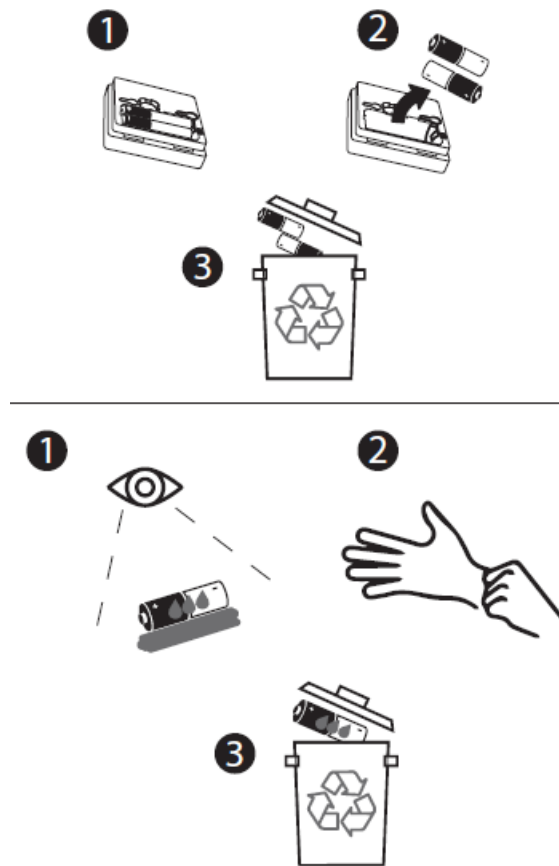


Mounting and inclusion



Remove and recycle batteries

Only use 1,5V AAA Alkaline



Danfoss A/S

Climate Solutions • danfoss.com • +45 7488 2222

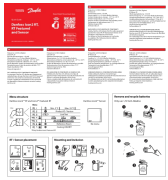
Any information, including, but not limited to information on selection of product, its application or use, product design, weight, dimensions, capacity or any other technical data in product manuals, catalogues descriptions, advertisements, etc. and whether made available in writing, orally, electronically, online or via download, shall be considered informative, and is only binding if and to the extent it reserves the right to alter in products without notice. This also applies to products ordered but not delivered provided that such alterations can be made without changes to form, fit or function. All trademarks in this material are property of Danfoss A/S or Danfoss group companies. Danfoss and the Danfoss logo are trademarks of Danfoss A/S. All rights reserved.

© Danfoss | Climate Solutions | 2024.10

Need help? Download App



Documents / Resources



[Danfoss Icon2 RT Featured Sensor](#) [pdf] User Guide Icon2 RT Featured Sensor, Icon2 RT, Featured Sensor, Sensor

References

-  [Engineering Tomorrow | Danfoss](#)
-  [Danfoss Climate Solutions for heating | Efficient solutions for superior comfort | Danfoss](#)
- [User Manual](#)

[Manuals+](#), [Privacy Policy](#)

This website is an independent publication and is neither affiliated with nor endorsed by any of the trademark owners. The "Bluetooth®" word mark and logos are registered trademarks owned by Bluetooth SIG, Inc. The "Wi-Fi®" word mark and logos are registered trademarks owned by the Wi-Fi Alliance. Any use of these marks on this website does not imply any affiliation with or endorsement.