



## Danfoss Icon2 RT Featured and Sensor User Guide

[Home](#) » [Danfoss](#) » Danfoss Icon2 RT Featured and Sensor User Guide 

### Contents

- [1 Danfoss Icon2 RT Featured and Sensor](#)
- [2 SPECIFICATION](#)
- [3 Menu structure](#)
- [4 Remove and recycle batteries](#)
- [5 RT / Sensor placement](#)
- [6 Mounting and inclusion](#)
- [7 Documents / Resources](#)
  - [7.1 References](#)
- [8 Related Posts](#)



**Danfoss Icon2 RT Featured and Sensor**



## SPECIFICATION

- **Frequency:** 2,4 GHz (Zigbee)
- **IP Class:** 20
- **Transmission power:** <10 mW
- **Power supply:** 2 x 1,5 V AAA-Alkaline batteries
- **Ambient temperature, storage:** -20 °C to +65 °C
- **Ambient temperature, use:** 0 °C to 40 °C
- **Purpose of device:** Temperature and humidity sensor
- **Temperature for ball pressure test:** 75 °C
- **Pollution degree:** PD2
- **Software Class:** A

## SIMPLIFIED EU DECLARATION OF CONFORMITY


Hereby, Danfoss A/S declares that the radio equipment type Danfoss Icon2 RT, RT Featured and Sensor are in compliance with Directive 2014/53/EU.


The full text of the EU declaration of conformity is available at the following internet address:

















[heating.danfoss.com](http://heating.danfoss.com)

## Menu structure

Danfoss Icon2™ RT and Icon2™ Featured RT

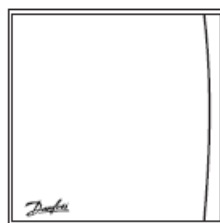
3 Sec. 

3 Sec. 

| Menu  |   |   |
|-------|---|---|
| ME.1  |    | Min. 5 °C  Max. 35 °C    |
| ME.2  |    | Product ID / Version  |
| ME.3  |    | Link Test   |
| *ME.4 |    |    |
| *ME.5 |    | Min. 18 °C  Max. 35 °C    |
| ME.6  |   | Reference Room  |
| ME.7  |   | Cooling ON/OFF  |

\*Only Danfoss Icon2 Featured RT

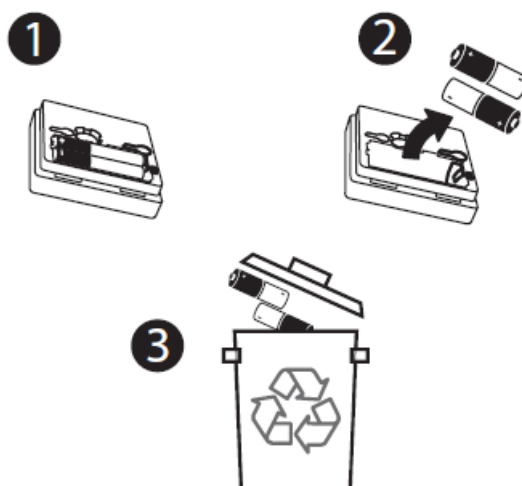
Danfoss Icon2™ Sensor

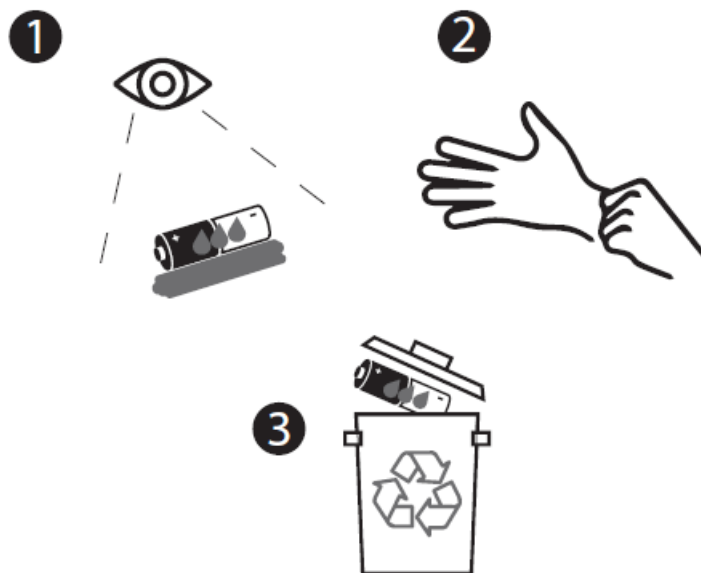


No menu

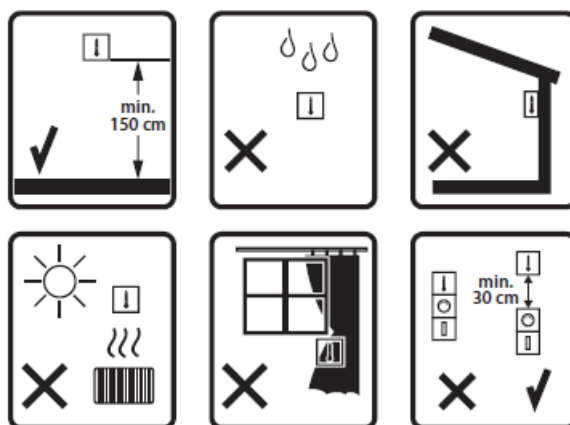
## Remove and recycle batteries

Only use 1,5V AAA Alkaline

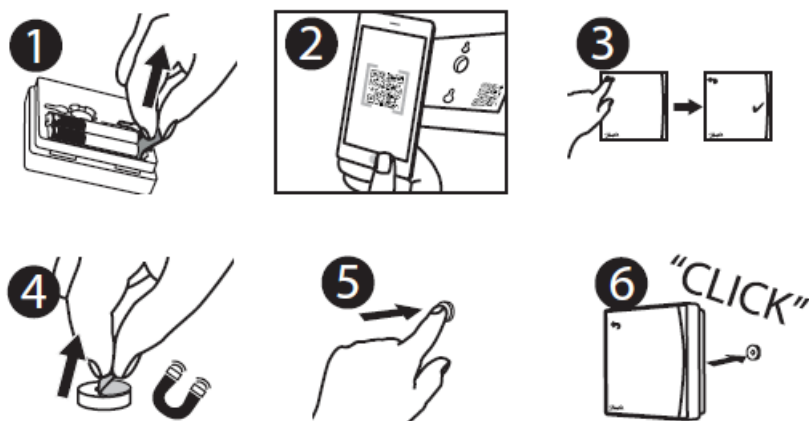




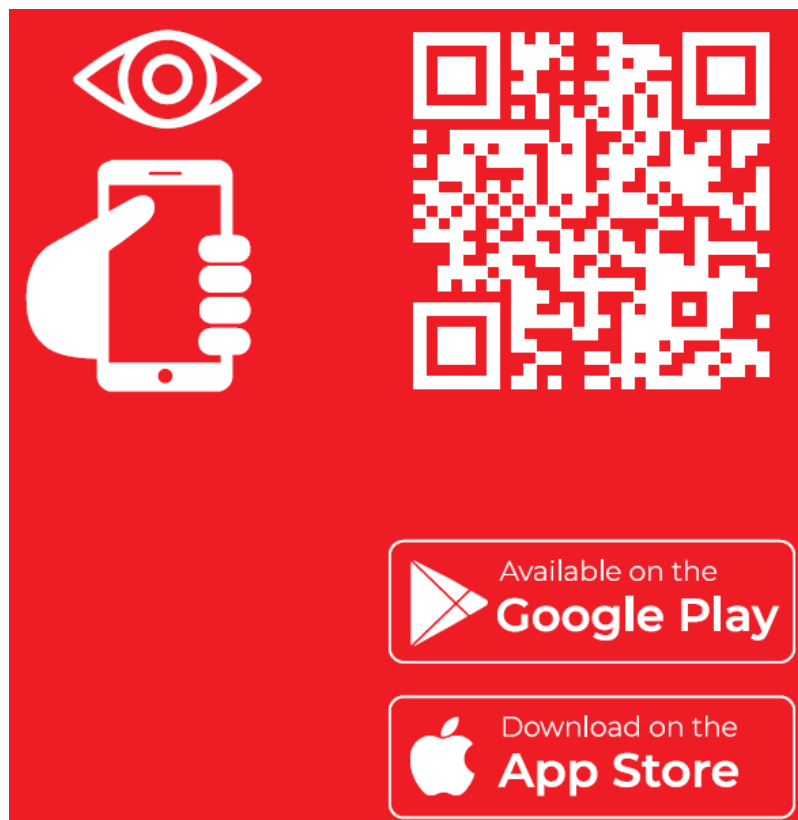
## RT / Sensor placement



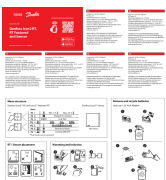
## Mounting and inclusion



Need help? Download App



## Documents / Resources

|   |  |
|---|--|
|  | <p><a href="#">Danfoss Icon2 RT Featured and Sensor</a> [pdf] User Guide<br/>Icon2 RT Featured and Sensor, Icon2, RT Featured and Sensor, Sensor</p> |
|---|--|

## References

-  [Danfoss - Engineering Tomorrow | Danfoss](#)
-  [Danfoss Climate Solutions for heating | Efficient solutions for superior comfort | Danfoss](#)