



Danfoss iC7 Series Pre Charging Unit Installation Guide

[Home](#) » [Danfoss](#) » Danfoss iC7 Series Pre Charging Unit Installation Guide 

Contents

- [1 Danfoss iC7 Series Pre-Charging Unit](#)
- [2 Product Usage Instructions](#)
- [3 Overview](#)
- [4 Mechanical Installation](#)
- [5 Electrical Installation](#)
- [6 Documents / Resources](#)
 - [6.1 References](#)



Danfoss iC7 Series Pre-Charging Unit



Specifications

- **Product:** iC7 Series Pre-charging Unit
- **Compatibility:** AFE and GC Modules
- **Dimensions (IEC):** 292mm x 240mm x 239mm
- **Dimensions (UL):** 292mm x 240mm x 239mm

Product Usage Instructions

Mechanical Installation

Safety Information

DANGER:

Always wait for the capacitors to fully discharge before performing any service or repair work. The discharge time is 5 minutes.

WARNING:

Components are live when connected to mains, avoid making changes in this state.

Installation Requirements

Install the pre-charging unit horizontally in the cabinet using M5 screws.

Cooling Requirements

CAUTION:

Avoid touching the pre-charging resistor when hot, and do not install it on a combustible surface.

Electrical Installation

Electrical Installation Safety

Ensure proper grounding and follow electrical safety procedures when connecting the unit to power sources.

FAQ

- **Q: What should I do if the warning indicator lights are off but high voltage may still be present?**

A: Always wait for the capacitors to discharge fully before performing any service or repair work. Use a measuring device to ensure no voltage is present.

- **Q: How many mounting screws should be used for industrial installations?**

A: In industrial installations, use a minimum of 4 M5 screws to secure the pre-charging unit to the cabinet.

Overview

Pre-charging Unit

The pre-charging unit is used for pre-charging the system modules that are connected to the same DC bus. There are 3 electrical sizes, and an IEC and a UL variant of the unit.

- Pre-charging unit 10, IEC/UL
- Pre-charging unit 20, IEC/UL
- Pre-charging unit 30, IEC/UL

The pre-charging unit is available as an accessory.

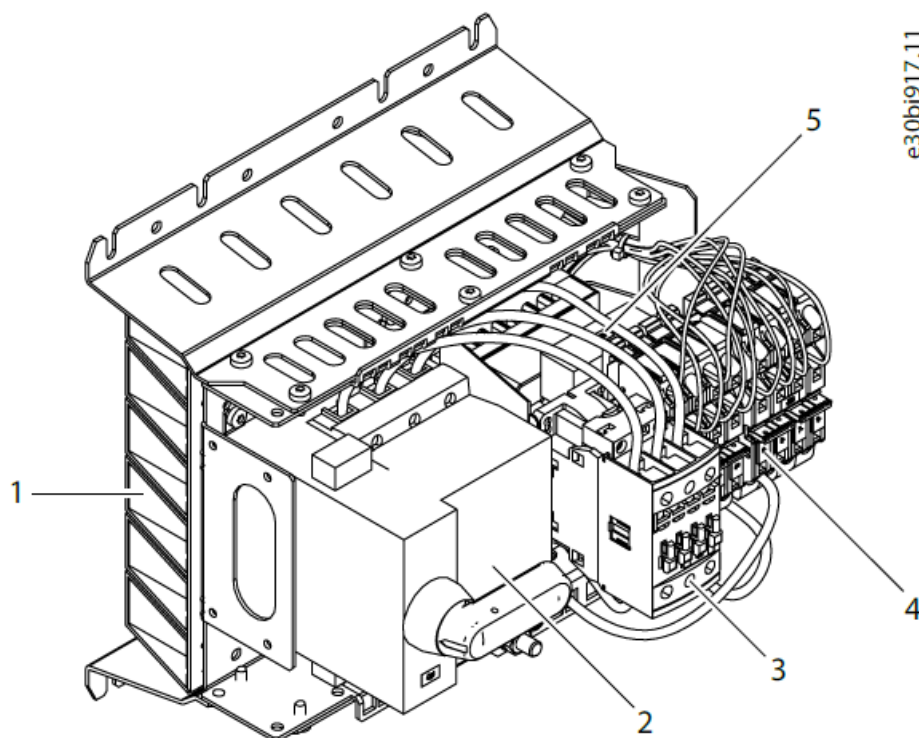


Illustration 1: The Pre-charging Unit

1. Charging resistors
2. Fuse switch
3. Contactor
4. Terminal blocks
5. Rectifier and snubber capacitor

Mechanical Installation

Safety Information

DANGER

DISCHARGE TIME

The drive contains DC-link capacitors, which can remain charged even when the drive is not powered. High voltage can be present even when the warning indicator lights are off. Failure to wait the specified time after the power has been removed before performing service or repair work could result in death or serious injury.

- Stop the motor.
- Disconnect AC mains, permanent magnet-type motors, and DC-link connections to other drives.
- Wait for the capacitors to discharge fully before performing any service or repair work. The discharge time is 5 minutes.
- Use a measuring device to make sure that there is no voltage, before opening the drive or performing any work on the cables.

WARNING

SHOCK HAZARD FROM THE COMPONENTS

The components of the drive are live when the drive is connected to mains.

- Do not make changes in the AC drive when it is connected to the mains.

Installation Requirements

- The products that are described in this guide have the protection rating IP00/UL Open Type. Install them in a cabinet or other enclosure that has a correct level of protection against the ambient conditions in the installation area.
- Make sure that the cabinet gives protection against water, humidity, dust, and other contaminations.
- The maximum temperature of the air inside the cabinet for the pre-charging unit is +60 °C (140 °F).
- The cabinet must also be sufficiently strong for the weight of the system module and other devices.
- The protection rating of the cabinet must be at least IP21/UL Type 1. When preparing the installation, obey the local regulations.

Installing the Pre-charging Unit into the Cabinet

Install the pre-charging unit into the cabinet in a horizontal position.

Procedure

1. Attach the pre-charging unit to the cabinet using the mounting holes.

- Use M5 screws.
- In industrial installations, use a minimum of 4 screws.
- In marine installations, use 8 screws. To make the installation secure, use the outermost mounting holes.

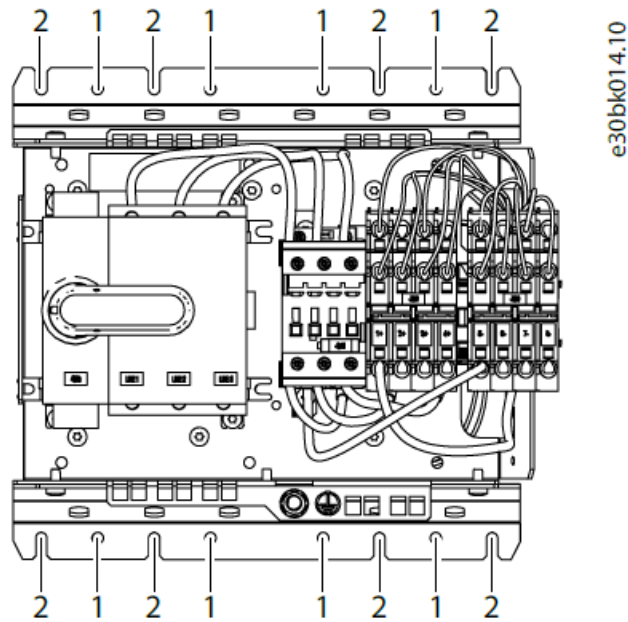


Illustration 2: Mounting Holes of the Pre-charging Unit

1. Preferred mounting holes
2. Alternative mounting holes

Cooling Requirements

The maximum ambient temperature of the pre-charging unit is 60 °C (140 °F). The product is cooled with natural convection. Make sure that the installation position provides conditions for natural convection. A minimum of 50 mm (2 in) free space at the top and bottom is necessary for sufficient cooling airflow.

CAUTION

BURN HAZARD

The pre-charging resistor will be very hot during the pre-charging sequence and the following cooling-down period.

- Do not install the pre-charging unit on a combustible surface.
- Do not touch when hot.

UL 98 Requirements

Minimum distances are required from the fuse switch of the pre-charging unit to the enclosure walls.

- 165 mm (6.50 in) from the top and bottom of the fuse switch terminals
- 13 mm (0.52 in) from the left side of the fuse switch

These distance requirements are for the size of the enclosure, not for electrical spacings.

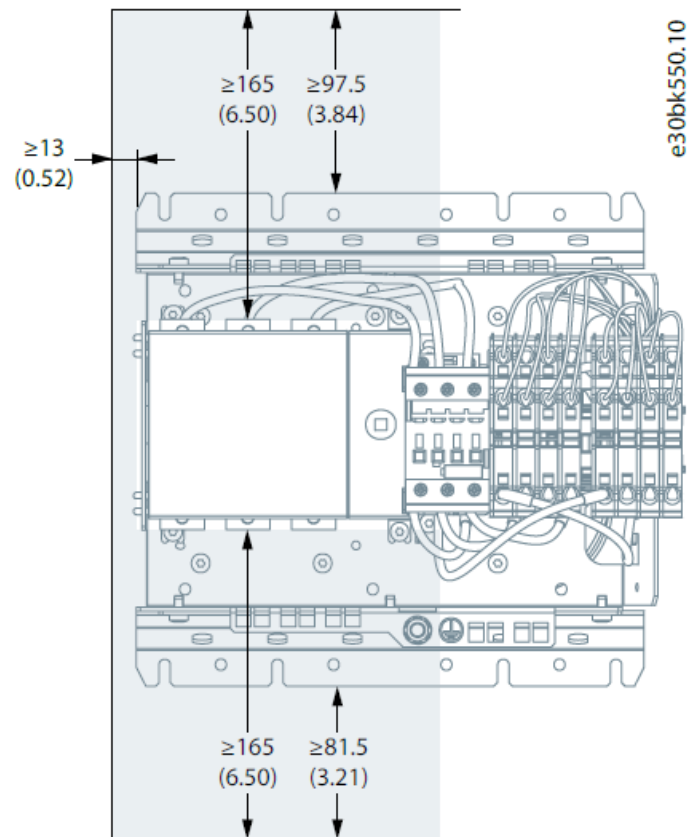


Illustration 3: Keep-out-area Around the Pre-charge Unit 10–30 UL Types, UL 98

Dimensions of the Pre-charging Unit, IEC

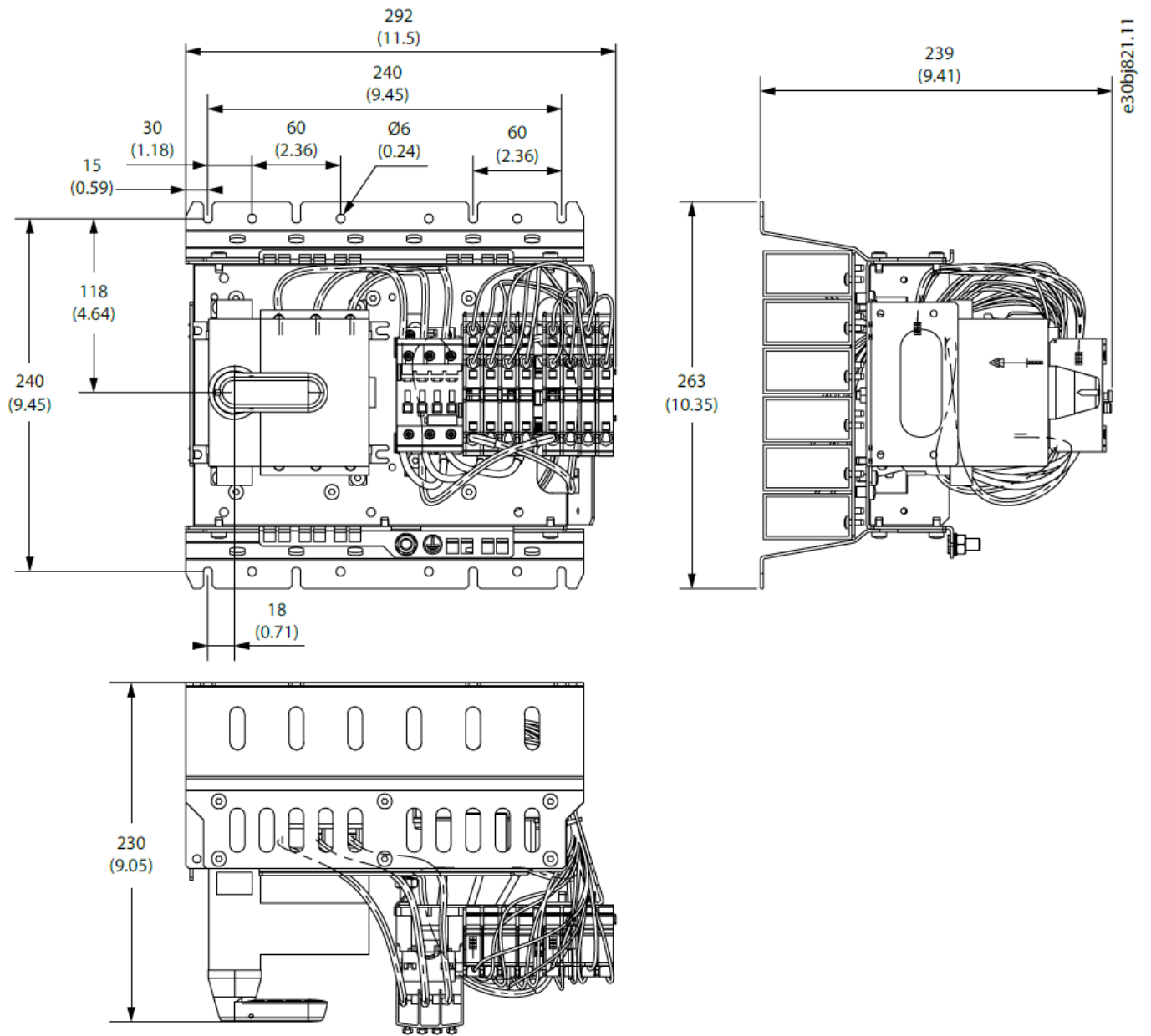


Illustration 4: Dimensions of the Pre-charging Unit in mm (in), IEC

Dimensions of the Pre-charging Unit, UL

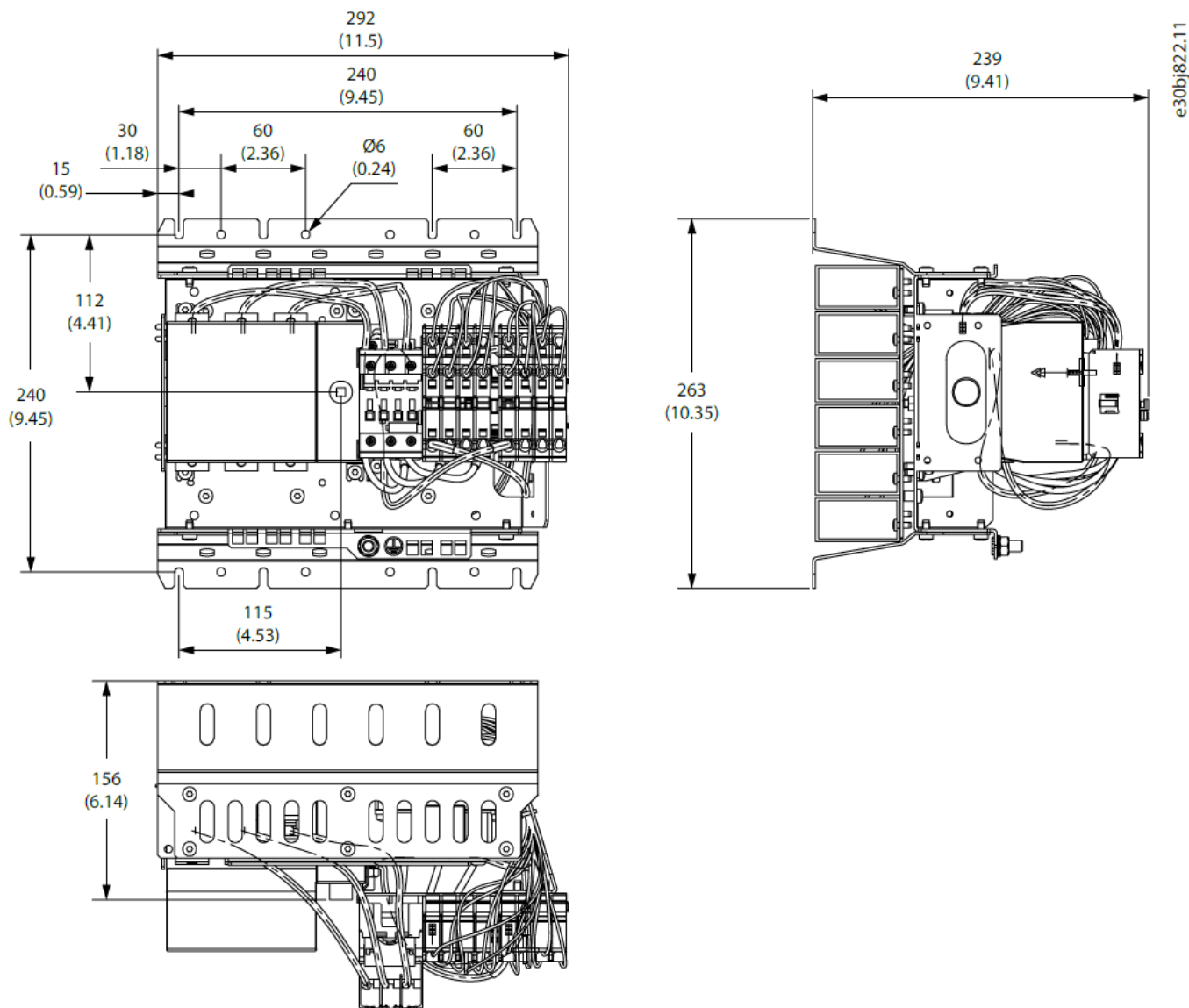


Illustration 5: Dimensions of the Pre-charging Unit in mm (in), UL

Electrical Installation

Electrical Installation Safety

WARNING

OVERHEATED CABLES

Overheated cables are a fire hazard.

- Because of several possible cable installations and environmental conditions, it is important to consider local regulations and IEC/EN standards.

Route the main circuit and control circuit wires away from sharp edges, screw threads, burrs, fins, moving parts, drawers, and similar parts, which can abrade the wire insulation. For the main circuit, use double insulated wires or protect the wires with, for example, a protective sleeve or wrap to minimize the risk of short circuits. Maintain separation between the main and control circuit wires.

Cable Requirements

Table 1: Mains Terminals Line 1, Line 3, Line 5

Item	Value
Terminal type	Screw terminal
Tool	Flathead
Wire size (Cu)	4–10 mm ² (10–8 AWG), solid or stranded, with a minimum insulation temperature rating of 75 °C.
Strip length	12 mm (0.47 in)
Torque per wire size	4–6 mm ² : 3 Nm 10 mm ² : 4 Nm 10 AWG: 30 in-lb 8 AWG: 35 in-lb

Table 2: DC Terminals DC+, DC-

Item	Value
Terminal type	Spring terminal
Wire size (Cu)	4–10 mm ² (10–8 AWG), solid or stranded, with a minimum insulation temperature rating of 75 °C.
Strip length	15 mm (0.59 in)

Table 3: Control Terminals A1, A2

Item	Value
Terminal type	Screw terminal
Tool	Pozidriv 2 or flat head 5.5 mm (0.22 in)
Wire size	1–2.5 mm ² (18–14 AWG)
Strip length	10 mm (0.39 in)
Torque	1.2 Nm (11 in-lb)

A PE conductor is required if the pre-charging unit is not fixed to a grounded conductive structural part of the drive enclosure.

Table 4: Grounding Terminal PE

Item	Value
Terminal type	Ring or fork terminal, size M8 Reference terminal type (UL): <ul style="list-style-type: none"> P8-38R-Q (AWG 8, Panduit) P10-38R-L (AWG 10, Panduit)
Wire size (Cu)	4–10 mm ² (10–8 AWG)

Fuses

Use only these fuse types in the fuse switch of the pre-charge unit.

Table 5:

Standard	Fuse I _n [A]	Fuse U _n [V AC]	Fuse type	Part number, Mer sen	Part number, Eaton
IEC	40	690	NH gG size 000	H000GG69V40	40NHG000B-690
UL	40	600	Class J, Time-delay, 2–3/8 x 1–1/16 in (60×27 mm)	AJT40	LPJ-40SP

Terminals

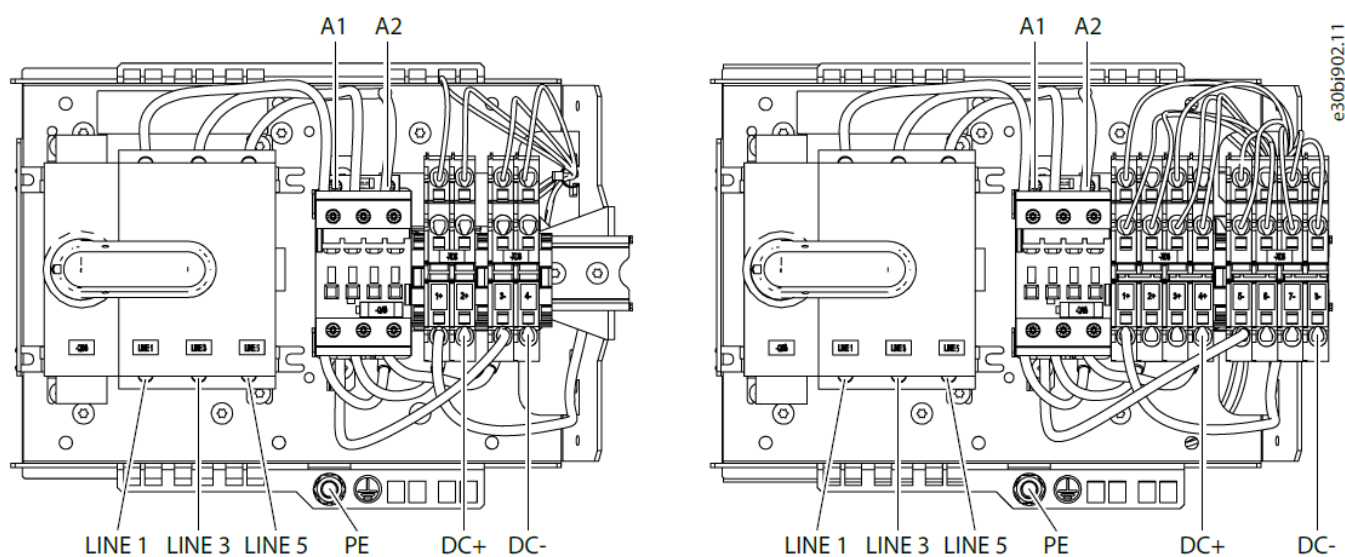


Illustration 6: Terminals of the Pre-charging Unit

- Left Pre-charging unit 10/20
- Right Pre-charging unit 30

Table 6: Pre-charging Unit Terminal Descriptions

Terminal	Description
Line 1 Line 3 Line 5	AC-supply connection point for pre-charging circuit
DC+	Pre-charging circuit, DC terminal connection point

DC-	
A1 A2	Pre-charging circuit, contactor coil terminal. Coil voltage range 100–250 V AC, 50/60 Hz.
PE	Grounding terminal for the pre-charging circuit

See the wiring diagrams in the Pre-charging Unit Wiring Diagram and the Control Wiring Diagram.

Installing the Power Cables

Procedure

1. Attach the mains cable to the mains terminals Line 1, Line 3, and Line 5 of the pre-charging unit.
 - Attach the grounding conductor of the mains cable to the PE terminal of the pre-charging unit.
 - See the cable requirements in Cable Requirements.
 - See the location of the main terminals in Terminals.
2. Attach the DC cable to the DC terminals DC+ and DC- of the pre-charging unit.
 - See the cable requirements in Cable Requirements.
 - See the location of the DC terminals in Terminals.

Pre-charging Unit Wiring Diagram

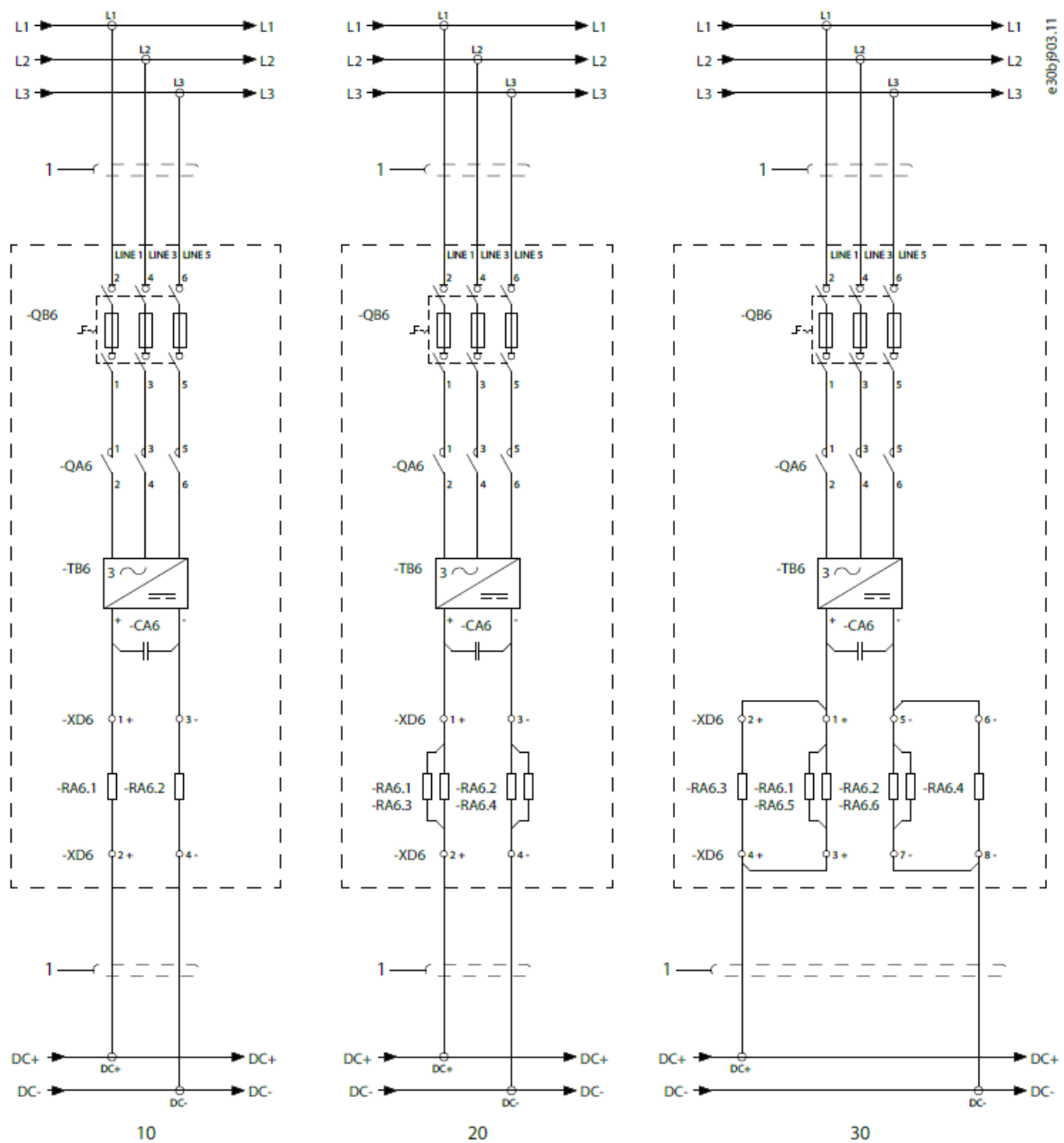


Illustration 7: Main Circuits of the Pre-charging Units

1. 1. Double-insulated cable
2. 10. Pre-charging unit 10, IEC/UL
3. 20. Pre-charging unit 20, IEC/UL
4. 30. Pre-charging unit 30, IEC/UL

Control Wiring Diagram

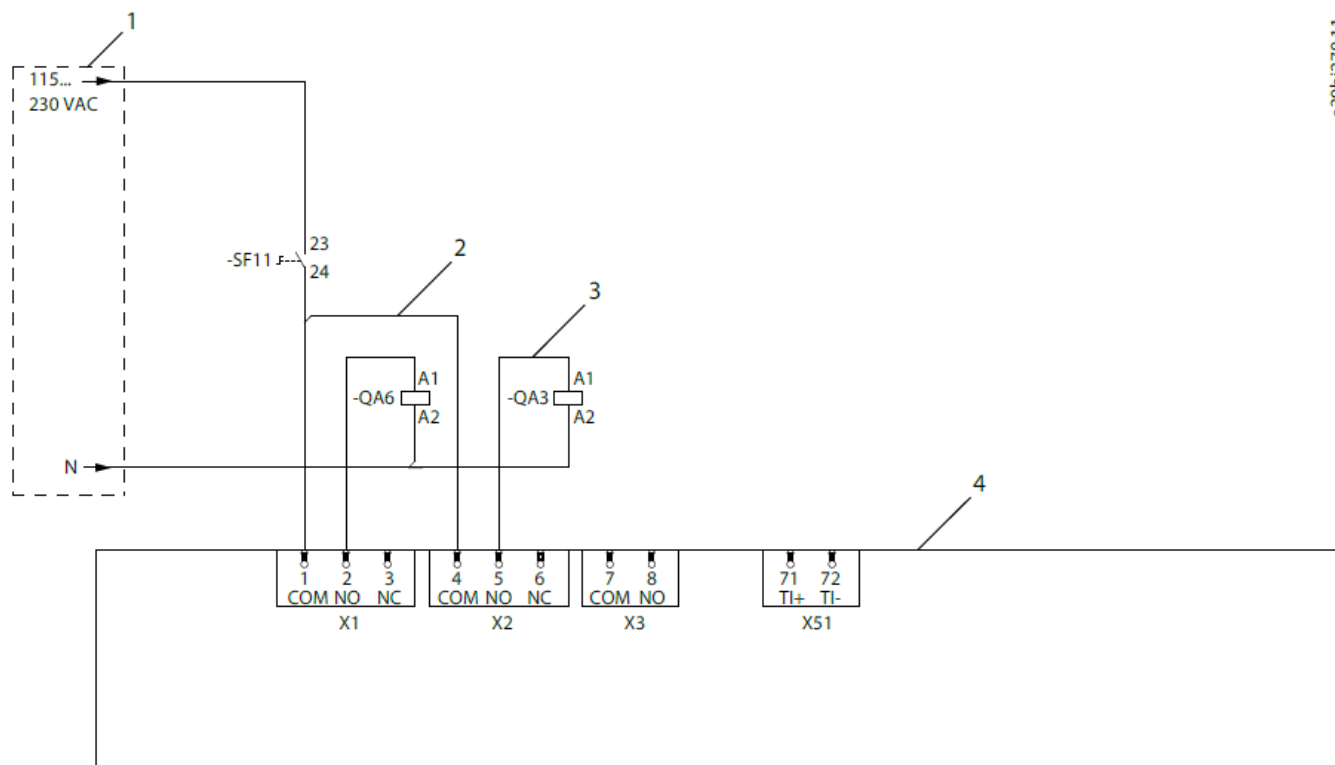


Illustration 8: Pre-charging Control Wiring Diagram

1. Short-circuit protected
2. Pre-charging contactor control
3. Main input device control
4. Basic I/O of the control unit of the AFE module

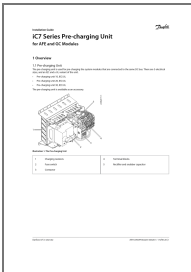
Vacon Ltd, Member of the Danfoss Group

- Runsorintie 7 FIN-65380 Vaasa
- www.danfoss.com.

Danfoss can accept no responsibility for possible errors in catalogues, brochures and other printed material. Danfoss reserves the right to alter its products without notice. This also applies to products already on order provided that such alterations can be made without subsequential changes being necessary in specifications already agreed. All trademarks in this material are the property of the respective companies. Danfoss and the Danfoss logotype are trademarks of Danfoss A/S. All rights reserved.

Danfoss A/S © 2023.02.

Documents / Resources



[Danfoss iC7 Series Pre Charging Unit](#) [pdf] Installation Guide
e30bj917.11, e30bk014.10, iC7 Series Pre Charging Unit, iC7 Series, Pre Charging Unit, Charging Unit, Unit

References

- [Engineering Tomorrow | Danfoss](#)
- [User Manual](#)

[Manuals+](#), [Privacy Policy](#)

This website is an independent publication and is neither affiliated with nor endorsed by any of the trademark owners. The "Bluetooth®" word mark and logos are registered trademarks owned by Bluetooth SIG, Inc. The "Wi-Fi®" word mark and logos are registered trademarks owned by the Wi-Fi Alliance. Any use of these marks on this website does not imply any affiliation with or endorsement.