

Danfoss HC6000 Series Electronic Programmable Thermostats Installation Guide



Contents

- [1 Installation and Setting Instructions](#)
- [2 TP6000M & TP6000MA Electronic Programmable Thermostats](#)
 - [2.1 Specification](#)
 - [2.2 Ordering Details](#)
 - [2.3 Applications](#)
 - [2.4 Installation](#)
 - [2.5 Wiring Connections](#)
 - [2.6 DIL Switch Settings \(see rear of circuit board\)](#)
 - [2.6.1 Fitting the Thermostat to the Wallplate](#)
 - [2.6.2 Ensure unit is firmly in place](#)
- [3 Documents / Resources](#)
 - [3.1 References](#)
- [4 Related Posts](#)

Installation and Setting Instructions

TP6000M & TP6000MA Electronic Programmable Thermostats

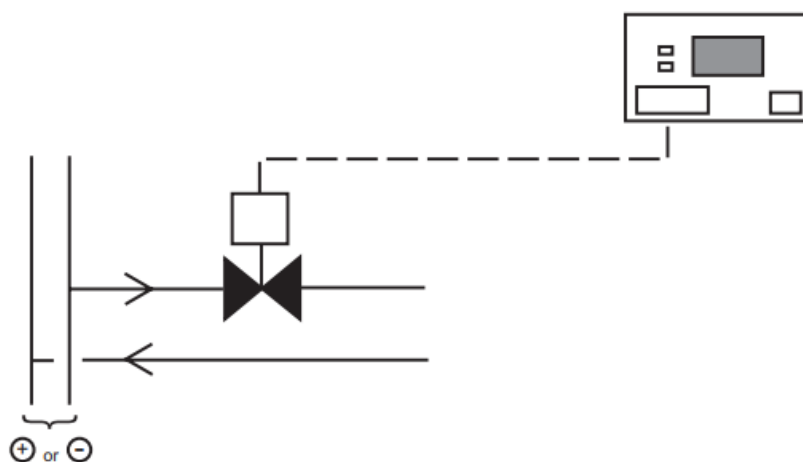
Specification

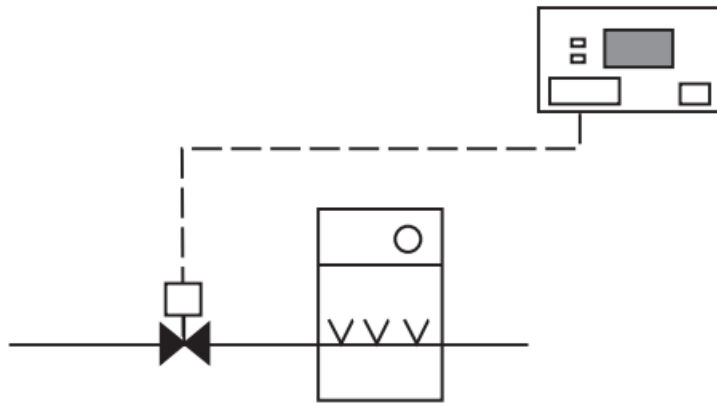
Power supply:	230 volt powered models – 210-250 Vac, 50/60Hz
Temperature range:	Off-5-30°C
Temperature accuracy:	± 0.5°C
Voltage rating of contacts:	20-250 Vac, 50/60Hz
Current rating of contacts:	10mA – 3A resistive, 1A inductive
Switching action:	Voltage free SPDT contacts, Type 1B
Time accuracy:	± 1 minute
Memory retention:	15 days
IP rating:	IP30
Dimensions (mm):	130 x 100 x 38 (W x H x D)
Control pollution situation:	Degree 2
Rated impulse voltage:	2.5 KV
Ball pressure test:	75°C

Ordering Details

Type	Code No.	Description
TP6000M	087N728600	5/2 day programmable room thermostat with built-in sensor
TP6000MA	087N728700	5/2 day programmable room thermostat with remote sensor

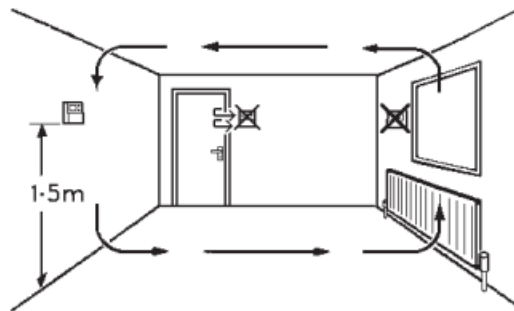
Applications



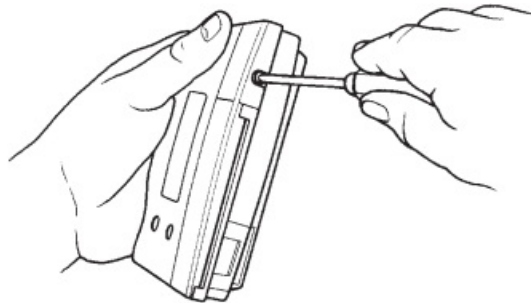


Installation

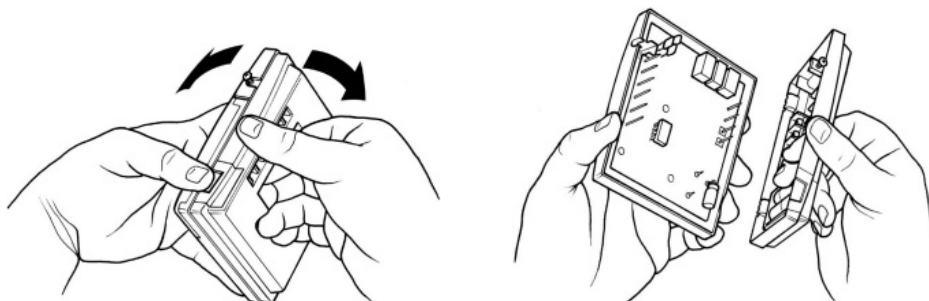
1. Thermostat Location



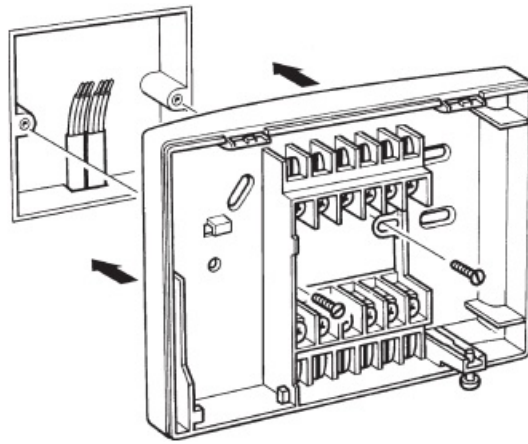
2. Unpacking the Thermostat



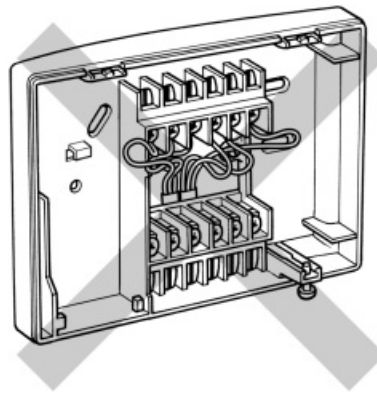
3. Separating the Wallplate



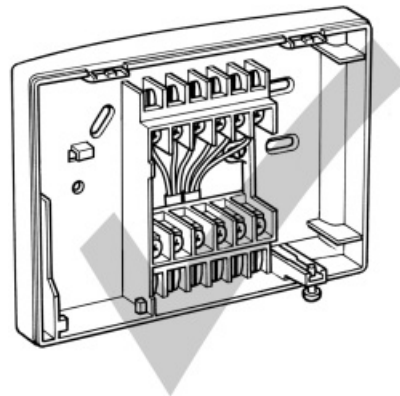
4. Fitting the Thermostat to the Wall



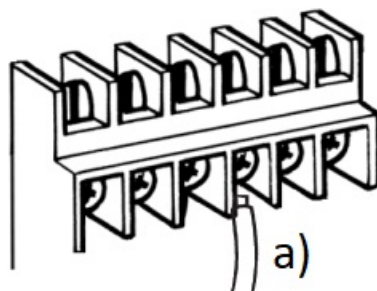
5. Wiring Access – Incorrect



6. Wiring Access – Correct

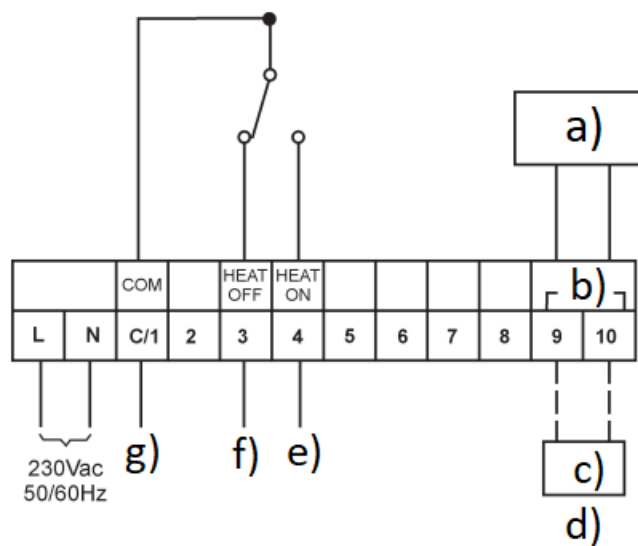


7. Cable Size



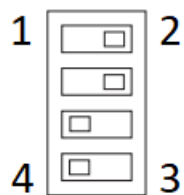
a) Max cable size 1.5mm²

Wiring Connections



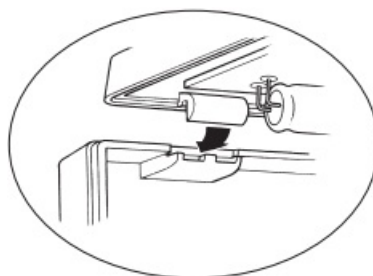
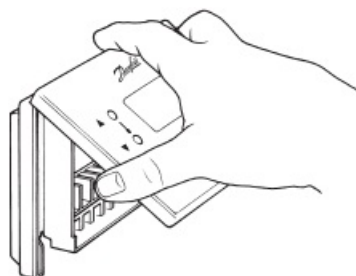
- a) ELECTRONICS
- b) SENSOR ROOM
- c) Remote Sensor
- d) TP6000MA Only
- e) Heat On
- f) Heat Off
- g) Live In Fused 3A

DIL Switch Settings (see rear of circuit board)

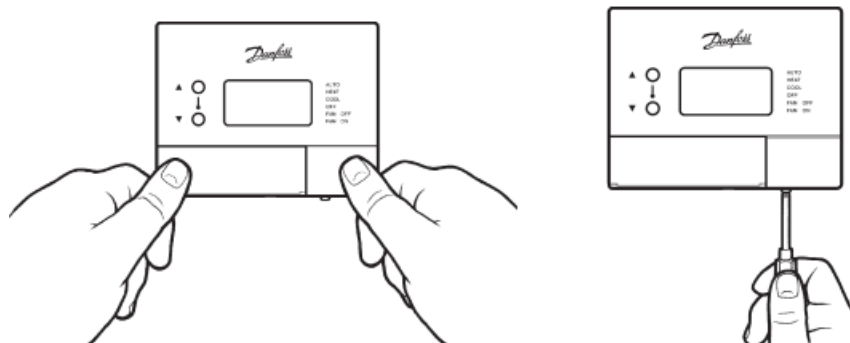


- 1. ON/OFF
- 2. CHRONO-PROPORTIONAL
- 3. 2 EVENTS EACH DAY
- 4. 4 EVENTS EACH DAY *

Fitting the Thermostat to the Wallplate



Ensure unit is firmly in place



Danfoss can accept no responsibility for possible errors in catalogues, brochures and other printed material. Danfoss reserves the right to alter its products without notice. This also applies to products already on order provided that such alterations can be made without subsequent changes being necessary in specifications already agreed.

Danfoss Randall Limited

Amphill Road,
Bedford, MK42 9ER
Tel: (01234) 364621 Fax: (01234 219705
Email: danfosrandall@danfoss.com
Website: www.danfoss-randall.co.uk



Part No: 33075v0 10/07

Documents / Resources

	<p>Danfoss HC6000 Series Electronic Programmable Thermostats [pdf] Installation Guide TP6000M, TP6000MA, HC6000 Series Electronic Programmable Thermostats, HC6000 Series, Electronic Programmable Thermostats, Programmable Thermostats, Thermostats</p>
--	---

References

- [User Manual](#)

Manuals+, Privacy Policy

This website is an independent publication and is neither affiliated with nor endorsed by any of the trademark owners. The "Bluetooth®" word mark and logos are registered trademarks owned by Bluetooth SIG, Inc. The "Wi-Fi®" word mark and logos are registered trademarks owned by the Wi-Fi Alliance. Any use of these marks on this website does not imply any affiliation with or endorsement.