



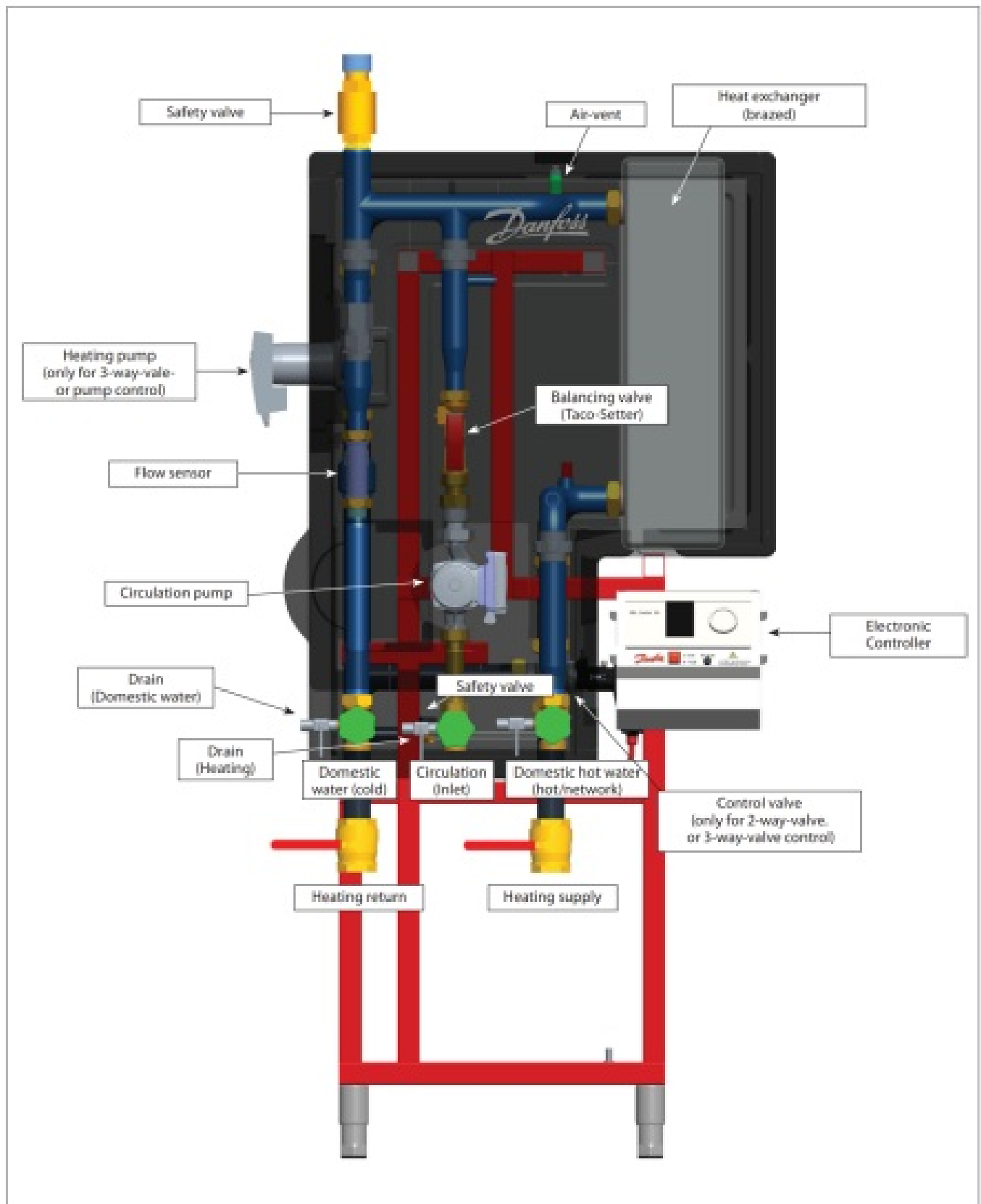
Danfoss FLS Transport Unpacking System



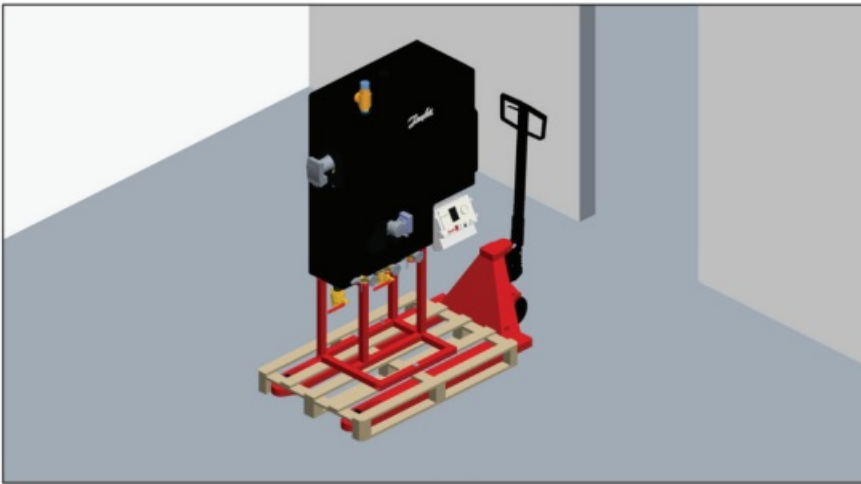
Contents [hide](#)

- [1 Transport/unpacking the system](#)
- [2 Setting up the system](#)
- [3 Connecting to the pipe network](#)
- [4 Disassembly of the thermal insulation \(cover\)](#)
- [5 Reassembly of the thermal insulation](#)
- [6 Customer Support](#)
- [7 Documents / Resources](#)
 - [7.1 References](#)

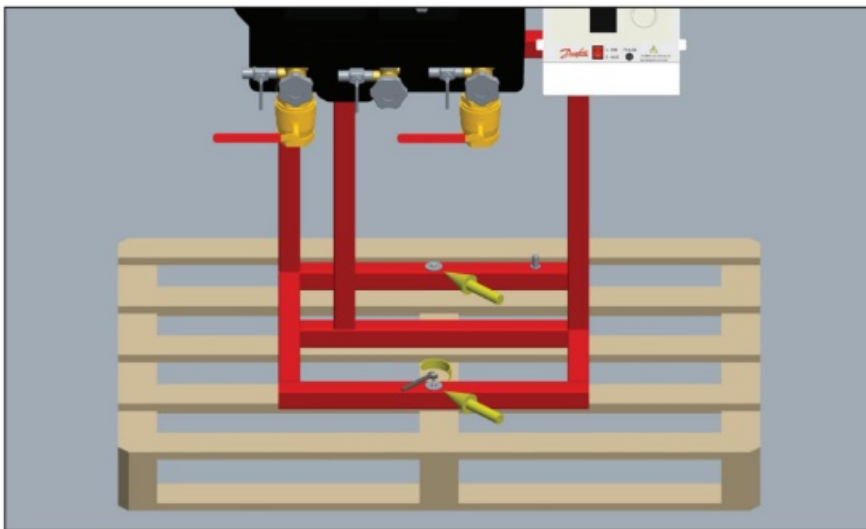
Transport/unpacking the system



The system is delivered on a standard EUR-pallet. This makes it easy to transport the product via a forklift truck or pallet truck.

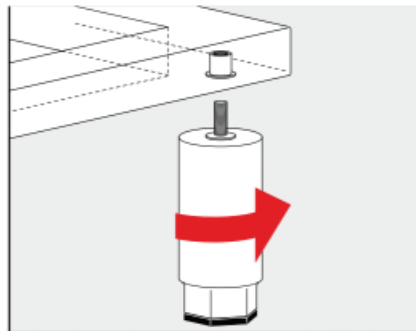
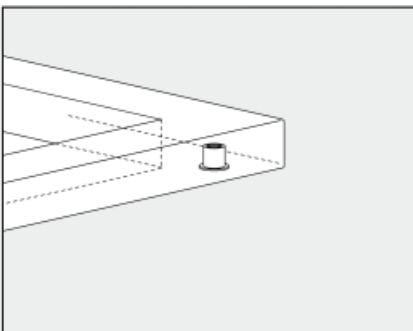


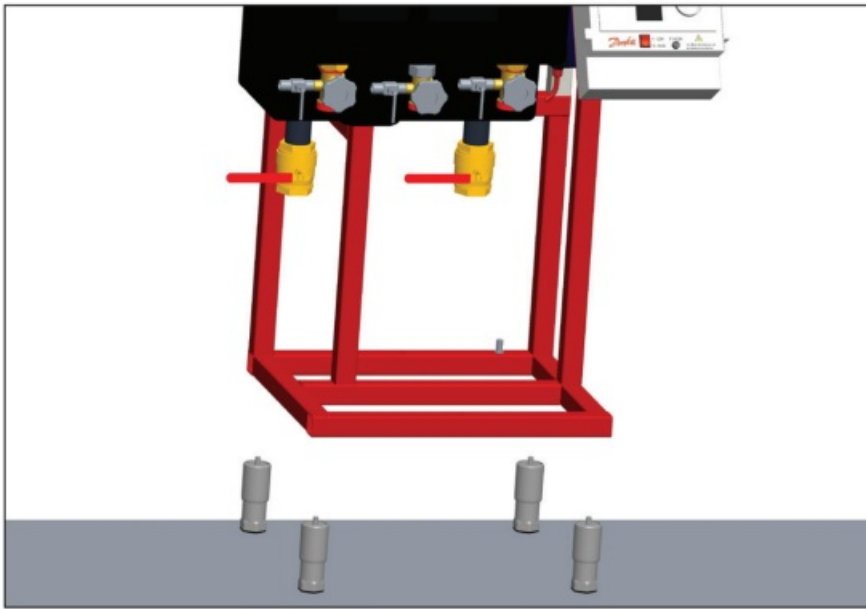
Remove the packaging (wooden crate/foil) and dispose of it.



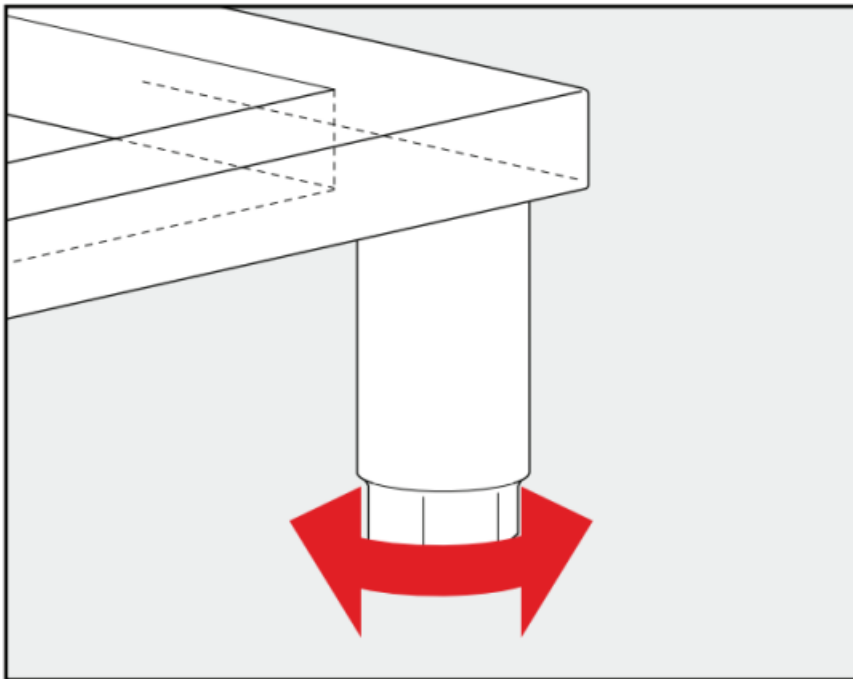
Setting up the system

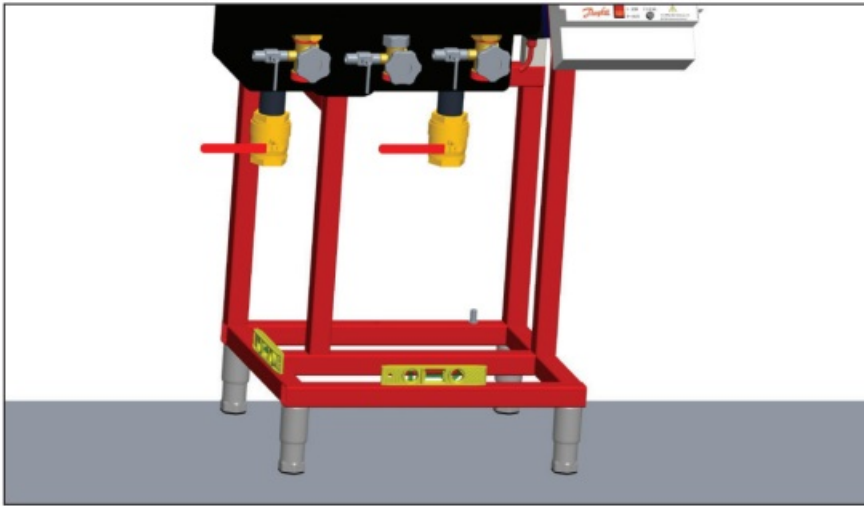
Screw the height-adjustable, enclosed feet into the threads beneath the frame:





Align the system horizontally by adjusting the height of the feet, e.g. using a spirit level. You can compensate for any unevenness of the installation area by up to 50mm:

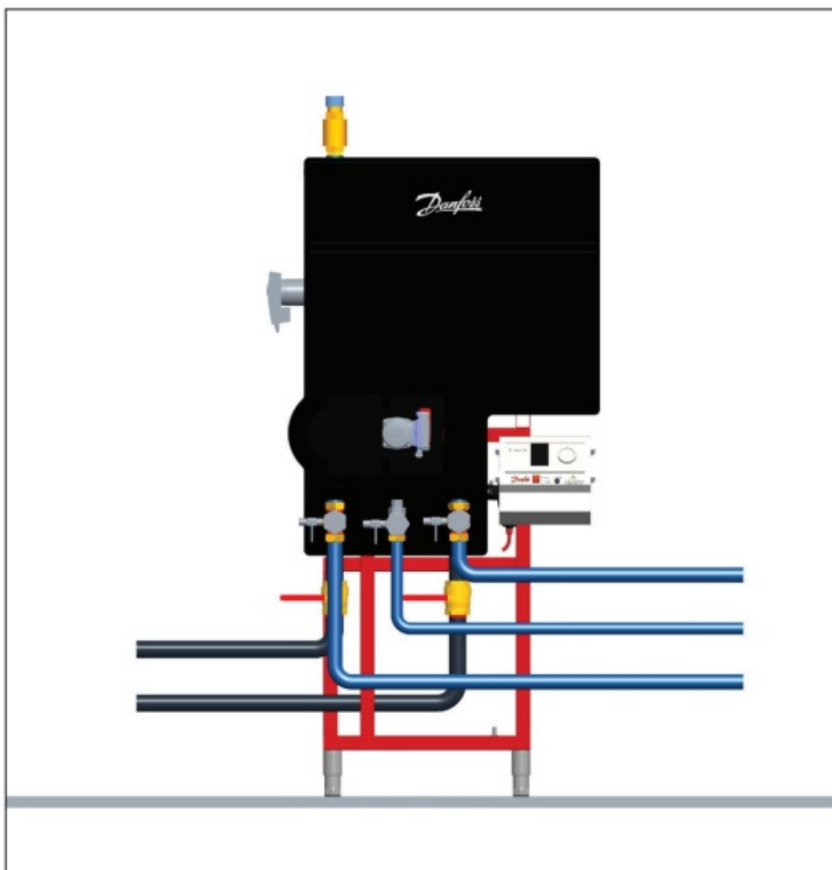




For more uneven surfaces, it is first necessary to create a level surface on site, e.g. a boiler platform or similar.

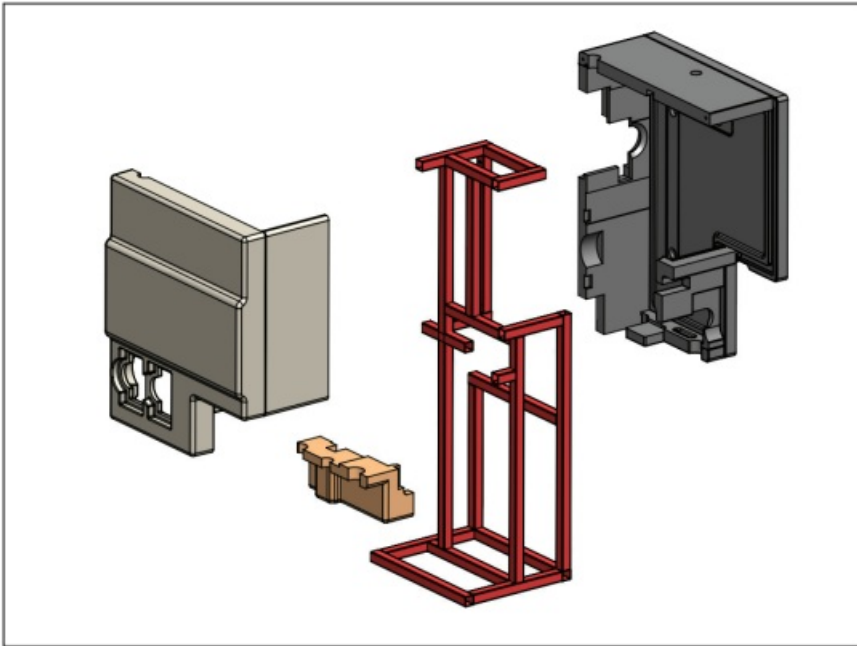
Connecting to the pipe network

Once the system is correctly aligned at the installation site, it can be connected to the pipe network.



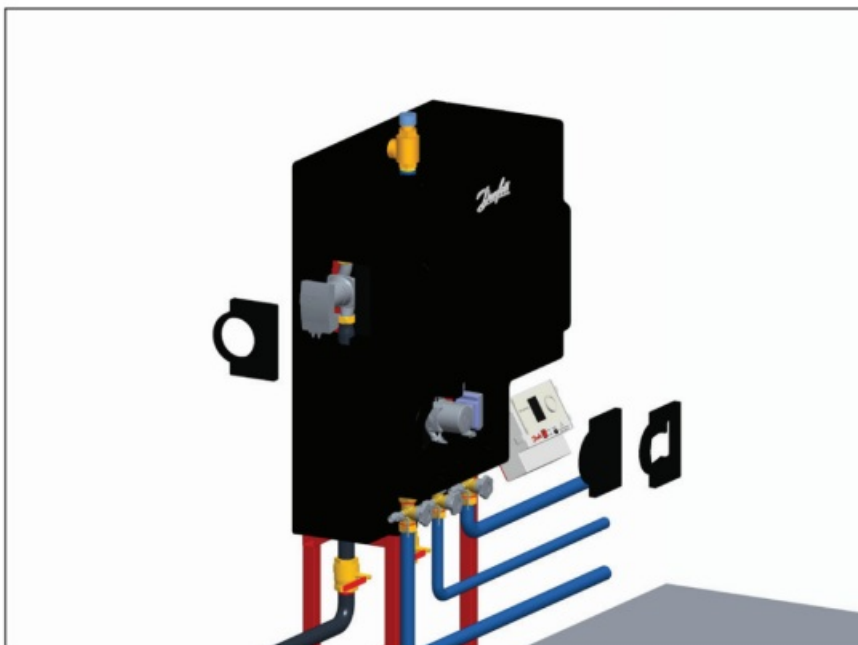
Disassembly of the thermal insulation (cover)

The thermal insulation consists of 3 hard foam parts. The back part with the left and top cover is firmly connected to the stand frame:



In addition, pumps and valves are provided with flexible covers.

First remove the flexible pump covers by carefully pulling them out of the recesses of the insulating cover. These are flexible and can be easily dismantled by pressing them together.

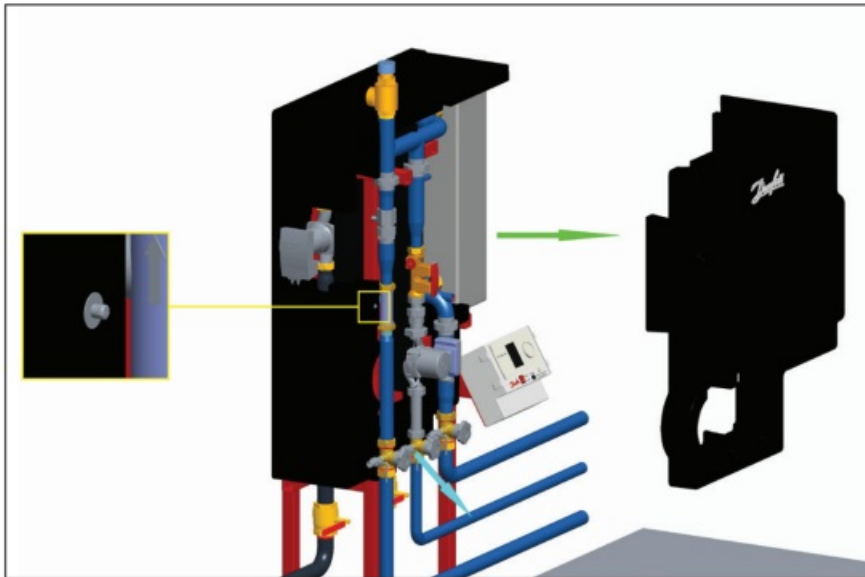


The front cover can be pulled out to the front. This is connected with the rear via multiple connectors (tongue and groove). Pull the cover as far forward horizontally as

possible to avoid damaging the connections.

The lower end part can then be easily pulled down obliquely since it is held only by a groove between the front and back parts. The left wall can also be pulled forward horizontally.

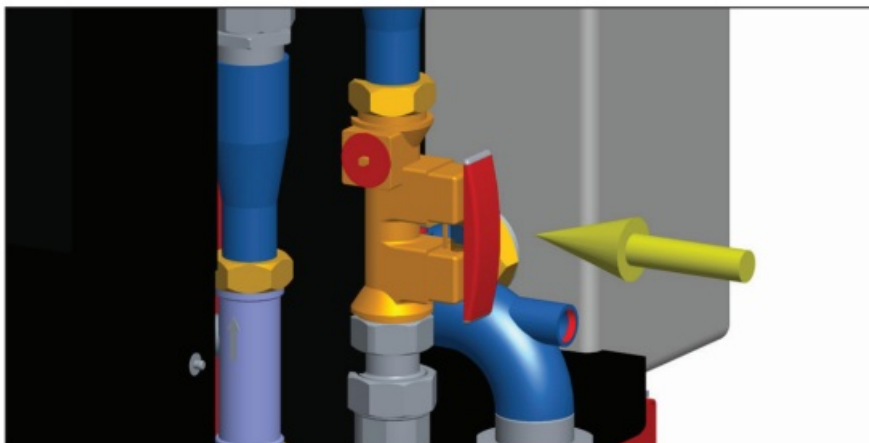
It is now possible to carry out inspection and maintenance work on the system, such as replacing defective components, checking for leaks or re-tightening screw connections.



You can also check and/or regulate the flow of circulation on the balancing valve (Taco setter) as shown in the picture on the right:

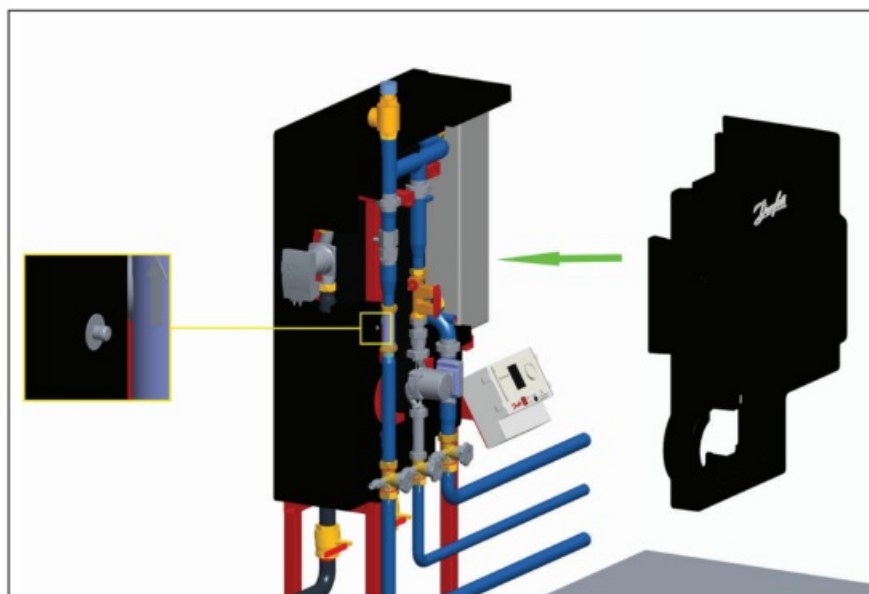
The system can be drained after shutting off the 5 main shut-off valves without removing the cover.

Further details can be found in the complete installation, commissioning and operating instructions.



Reassembly of the thermal insulation

The front insulation is installed in reverse order. Pay particular attention to the correct positioning of the connectors. Only when all tongue and groove connections are correctly positioned should the front and back be pressed together firmly.



Customer Support

Danfoss A/S

Heating Segment • heating.danfoss.com • +45 7488 2222 • E-Mail: heating@danfoss.com

Danfoss can accept no responsibility for possible errors in catalogues, brochures, and other printed material. Danfoss reserves the right to alter its products without notice.

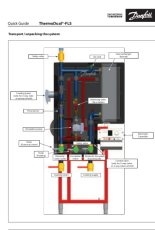
This also applies to products already on order provided that such alterations can be

made without subsequential changes being necessary in specifications already agreed.

All trademarks in this material are property of the respective companies. Danfoss and all Danfoss logotypes are trademarks of Danfoss A/S. All rights reserved.



Documents / Resources



[Danfoss FLS Transport Unpacking System \[pdf\] User Guide](#)

DHS-SMTL, PL, FLS Transport Unpacking System, FLS, Transport Unpacking System, Unpacking System

References

- [User Manual](#)

Related Posts



[Danfoss PFM100 Measuring Instrument User Guide](#)

Danfoss PFM100 Measuring Instrument Prepare the valve Measuring Pump Optimization with the Danfoss Δp Tool for Dynamic Valve™...



[Danfoss TWA-Q Actuators User Guide](#)

Danfoss TWA-Q Actuators Operating Guide Any information, including, but not limited to information on

selection of product, its...



[Danfoss MCX Controller User Guide](#)

Danfoss MCX Controller User Guide Warning Be careful to operate with proper forces avoiding mechanical stress to the...

[Danfoss AM501139320043en-000101 Part Portal User Guide](#)

Partner Portal - Quick Setup Guide Alsmart® In the Danfoss partner Portal you can find supporting materials for...

■[Danfoss](#)◆[Danfoss](#), [DHS-SMTL](#), [FLS](#), [FLS Transport Unpacking System](#), [PL](#), [Transport Unpacking System](#), [Unpacking System](#)

[Previous Post](#)

[Danfoss MCB 106 VLT 24 V DC Supply Installation Guide](#)

[Next Post](#)

[Danfoss MCF 107 VLT C-option Adapter Installation Guide](#)

Leave a comment

Your email address will not be published. Required fields are marked *

Comment *

Name

Email

Website

☐ Save my name, email, and website in this browser for the next time I comment.

Post Comment

[Manuals+](#), [Privacy Policy](#) | [@manuals.plus](#) | [YouTube](#)

This website is an independent publication and is neither affiliated with nor endorsed by any of the trademark owners. The "Bluetooth®" word mark and logos are registered trademarks owned by Bluetooth SIG, Inc. The "Wi-Fi®" word mark and logos are registered trademarks owned by the Wi-Fi Alliance. Any use of these marks on this website does not imply any affiliation with or endorsement.