

Danfoss
FH-WC Connection Box



Danfoss FH-WC Connection Box Installation Guide

[Home](#) » [Danfoss](#) » Danfoss FH-WC Connection Box Installation Guide 

Contents

- [1 Danfoss FH-WC Connection Bo](#)
- [2 Specifications](#)
- [3 Installation](#)
- [4 Usage](#)
- [5 Frequently Asked Questions](#)
- [6 Documents / Resources](#)
 - [6.1 References](#)



Danfoss FH-WC Connection Bo



Specifications

- Model: FH-WC Connection Box, 230V
- Brand: Danfoss

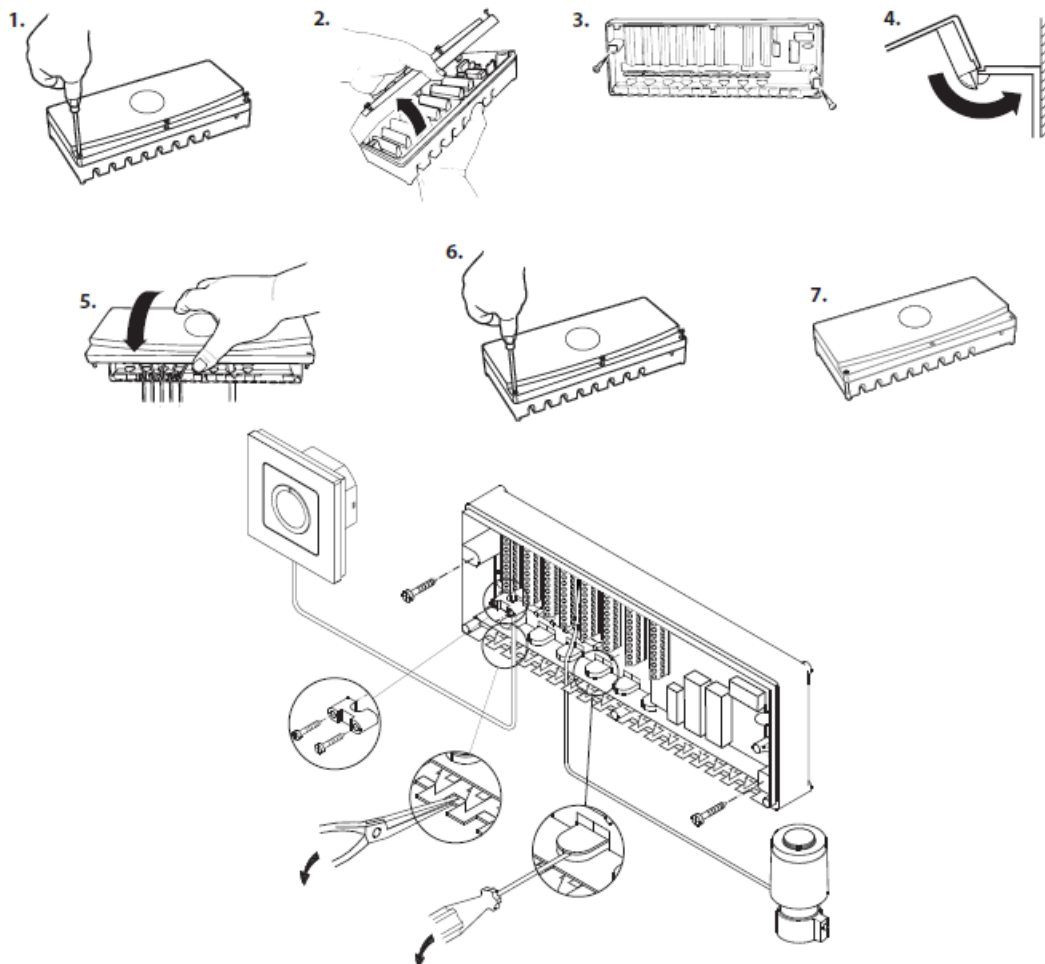
- Power Supply: 230V, 50Hz
- Max. Load: 10W/50mA
- IP Rating: IP21 T30

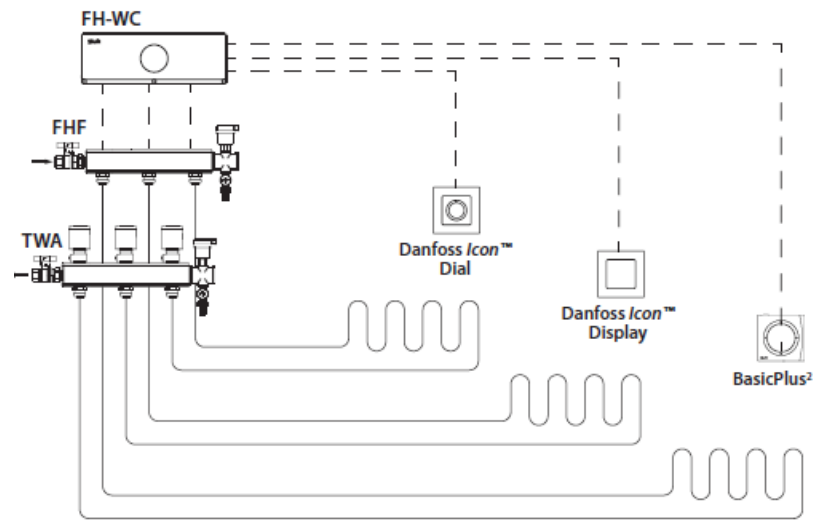
The installation must be done by an authorized and qualified installer according to local regulations.

Installation

Before installing the FH-WC Connection Box, ensure that the power supply is turned off. Follow these steps:

1. Locate a suitable mounting location for the connection box.
2. Connect the necessary cables (L, N, PE) as per the provided diagram.
3. Securely mount the connection box using appropriate fixtures.
4. Turn on the power supply and ensure proper functionality.



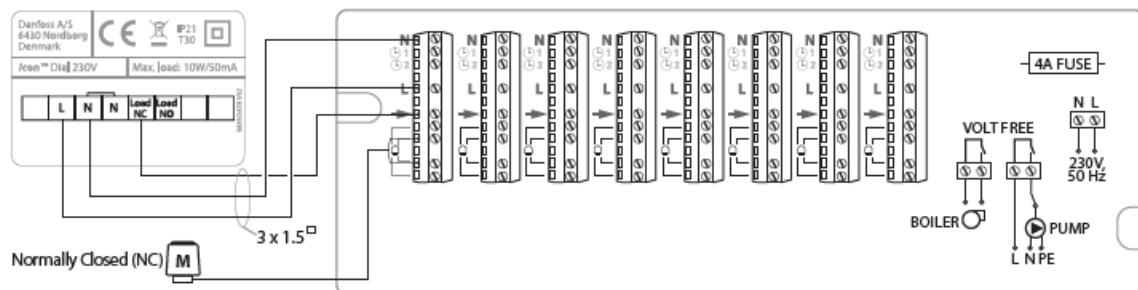


Usage

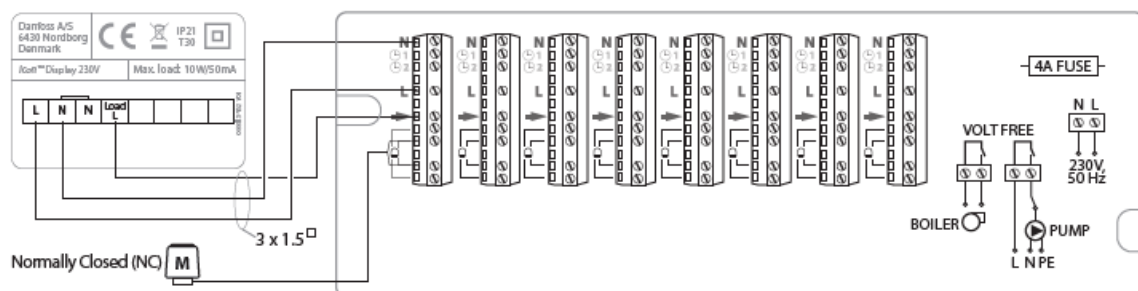
To use the FH-WC Connection Box with Danfoss Icon™ devices, follow these steps:

1. Connect the Danfoss Icon™ Dial or Display to the FH-WC according to the provided instructions.
2. Ensure the load does not exceed the specified limits to avoid damage.
3. For programmable features, refer to the specific device manual for programming instructions.

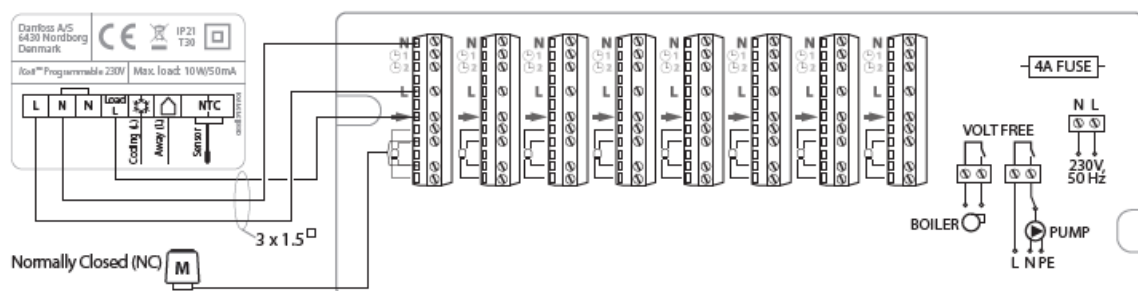
FH-WC + Danfoss Icon™



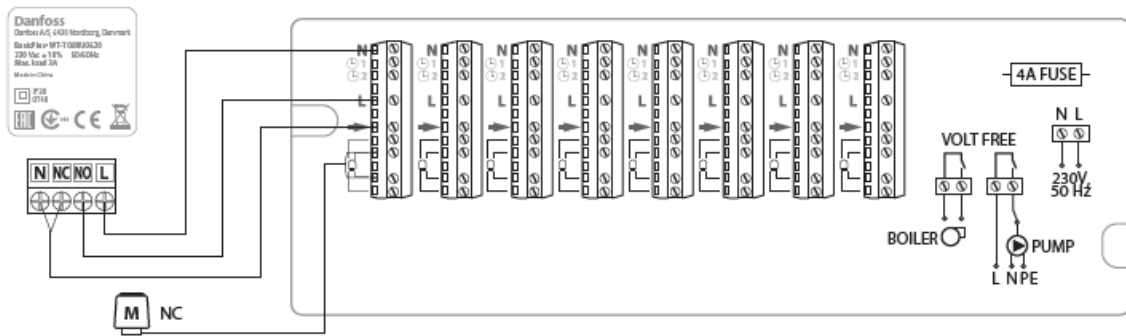
FH-WC + Danfoss Icon™ Dial



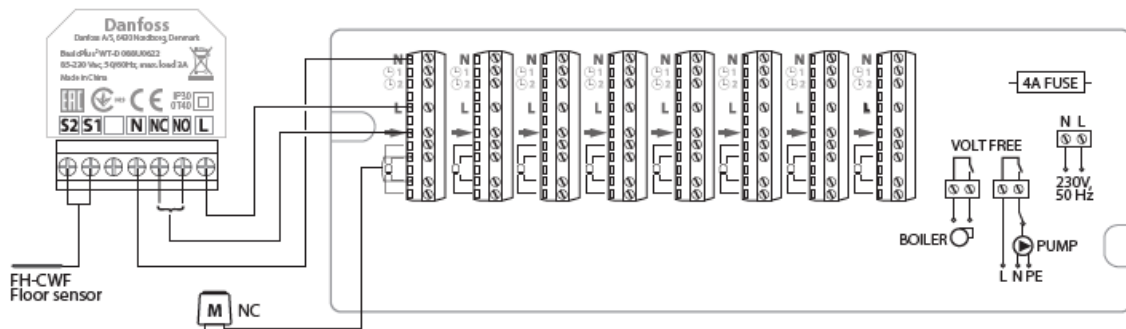
FH-WC + Danfoss Icon™ Display



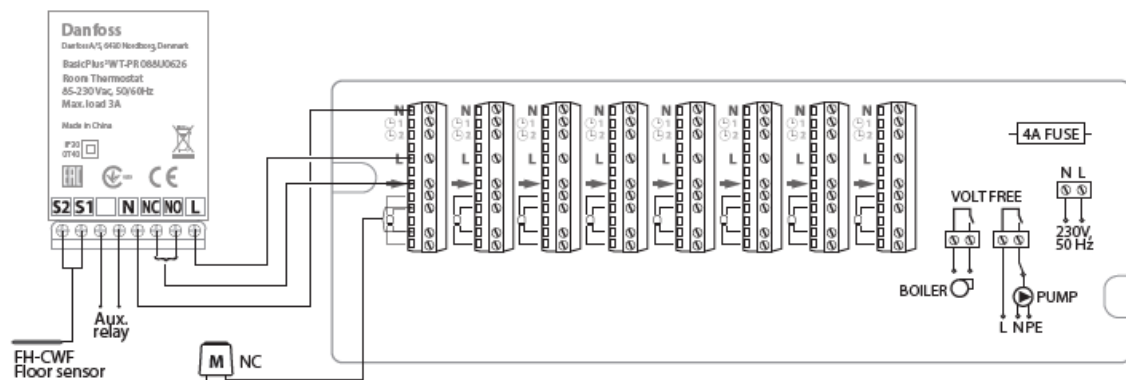
FH-WC + BasicPlus2



FH-WC + BasicPlus² WT-T



FH-WC + BasicPlus² WT-D / WT-P



Danfoss A/S

Floor Heating Hydronics • Ulvehavevej 61 • DK-7100 Vejle • Denmark • Phone: +45 7488 8500 • Fax: +45 7488 8501 heating@danfoss.com • www.floorheating.danfoss.com

Danfoss can accept no responsibility for possible errors in catalogues, brochures, and other printed material. Danfoss reserves the right to alter its products without notice. This also applies to products already on order, provided that such alterations can be made without subsequent changes being necessary in specifications already agreed upon.

All trademarks in this material are the property of the respective companies. Danfoss and the Danfoss logotype are trademarks of Danfoss A/S. All rights reserved.

Frequently Asked Questions

• Q: Can I install the FH-WC Connection Box myself?

A: Installation should be carried out by a qualified electrician in accordance with local regulations to ensure safety and proper functioning.

• Q: What is the maximum load supported by the FH-WC Connection Box?

A: The FH-WC Connection Box supports a maximum load of 10W/50mA.


- **Q: Where can I find additional programming instructions for the Danfoss Icon™ devices?**

A: Refer to the specific manual provided with the Danfoss Icon™ Dial or Display for detailed programming guidance.

Documents / Resources

	<p>Danfoss FH-WC Connection Box [pdf] Installation Guide</p> <p>088H0016, 088N2916, 088N3452, 088N3454, 088U0622, 088U0626, FH-WC Connection Box, FH-WC, Connection Box</p>
---	---

References

-  [Engineering Tomorrow | Danfoss](#)
- [User Manual](#)

Manuals+ Privacy Policy

This website is an independent publication and is neither affiliated with nor endorsed by any of the trademark owners. The "Bluetooth®" word mark and logos are registered trademarks owned by Bluetooth SIG, Inc. The "Wi-Fi®" word mark and logos are registered trademarks owned by the Wi-Fi Alliance. Any use of these marks on this website does not imply any affiliation with or endorsement.