



## Danfoss EVU Normally Closed Valve Installation Guide

[Home](#) » [Danfoss](#) » Danfoss EVU Normally Closed Valve Installation Guide 

### Danfoss EVU Normally Closed Valve



## Refrigerants:

R744, R22/R407C, R404A/R507, R410A, R134a, R407A, R23.

For other refrigerants, please contact Danfoss.

## Max. working pressure PS/MWP:

- **EVU 1 – 8:** 70 barg/1015 psig
- **EVUB and EVUF:** 45.2 barg /655 psig

**Max. opening differential pressure MOPD:** Coil dependent

**Max. temperature of medium:** Min. -40 °C (-40 °F) Max. 105 °C ( 220 °F)

**Ambient temperature:** Min. -40 (-40 °F) Max. 60 °C (140 °F)

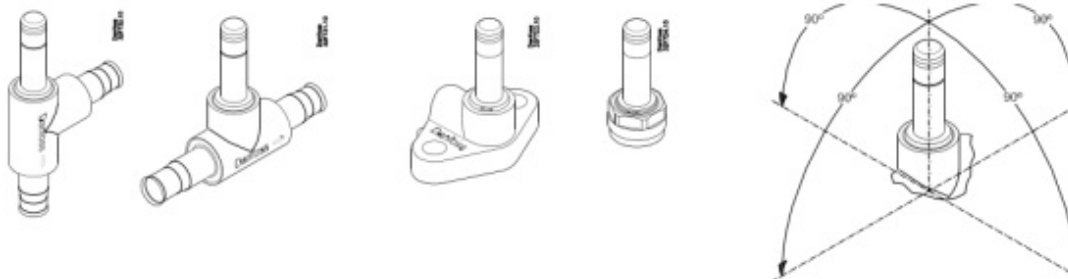
### Contents

[1 Installation Instruction](#)

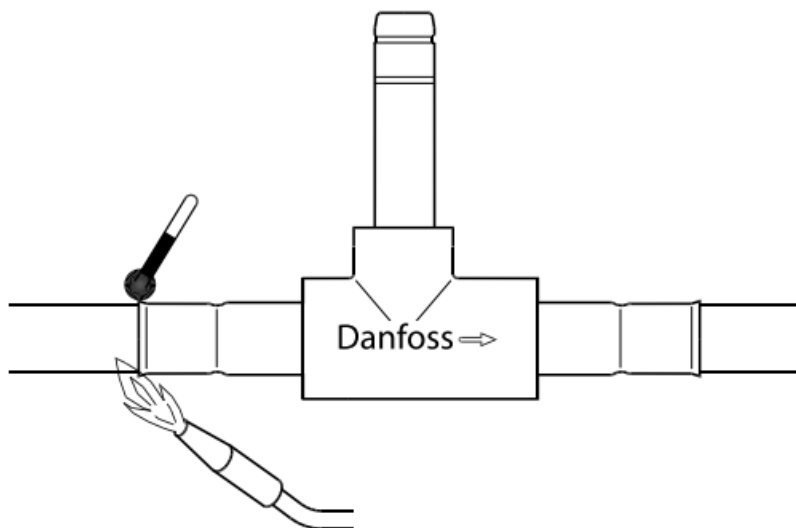
[2 Documents /  
Resources](#)

[2.1 References](#)

## Installation Instruction



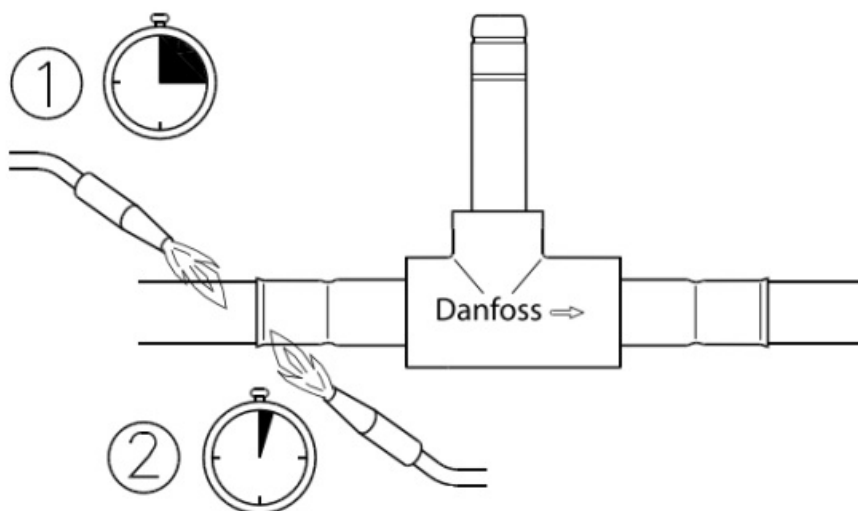
**Valve connection:** max. 700 °C (1300 °F)



Danfoss 32M06.12FW


**Cobber tube:** 10 – 15 Sec.

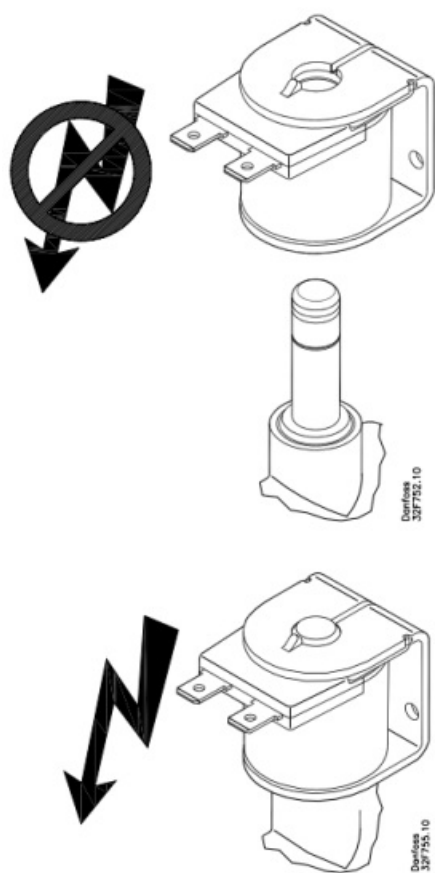
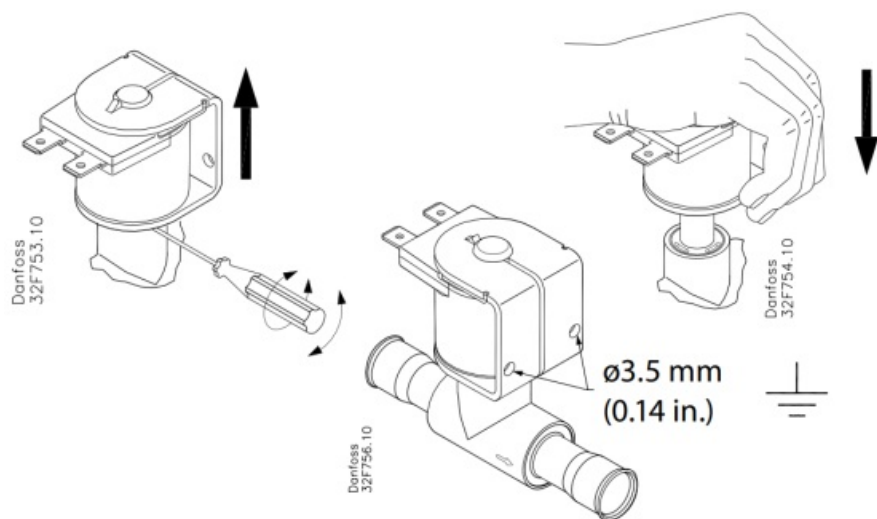
**Valve connection:** 2 – 5 Sec.



Danfoss 32M07.12FW

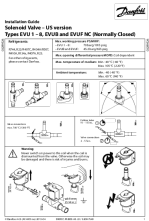
### Warning

 Never switch on power to the coil when the coil is dismantled from the valve. Otherwise the coil may be damaged and there is risk of injuries and burns.



© Danfoss A/S (AC-MCI sw) 2013-04  
DKRCC.PI.BD0.A3.22 / 520H7549

*Danfoss*



## [Danfoss EVU Normally Closed Valve](#) [pdf] Installation Guide

032R9526, 032R9526, 032R9526, EVU Normally Closed Valve, EVU, Normally Closed Valve, C  
losed Valve

## References

- [User Manual](#)

### [Manuals+](#), [Privacy Policy](#)

This website is an independent publication and is neither affiliated with nor endorsed by any of the trademark owners. The "Bluetooth®" word mark and logos are registered trademarks owned by Bluetooth SIG, Inc. The "Wi-Fi®" word mark and logos are registered trademarks owned by the Wi-Fi Alliance. Any use of these marks on this website does not imply any affiliation with or endorsement.