


EVRH 10 22 Solenoid
Valve Types



Danfoss EVRH 10 22 Solenoid Valve Types Installation Guide

[Home](#) » [Danfoss](#) » Danfoss EVRH 10 22 Solenoid Valve Types Installation Guide 

Contents

- [1 Danfoss EVRH 10 22 Solenoid Valve Types](#)
- [2 Specifications](#)
- [3 Installation](#)
- [4 Usage](#)
- [5 Maintenance](#)
- [6 FAQ](#)
- [7 Documents / Resources](#)
 - [7.1 References](#)



Danfoss EVRH 10 22 Solenoid Valve Types

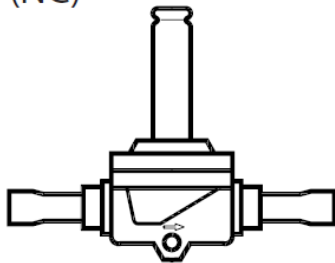


Refrigerants:

R744, R22/R407C, R404A/R507, R410A, R134a, R407A, R23.

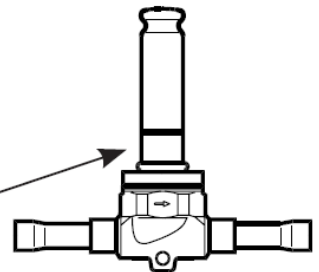
For other refrigerants, please contact Danfoss.

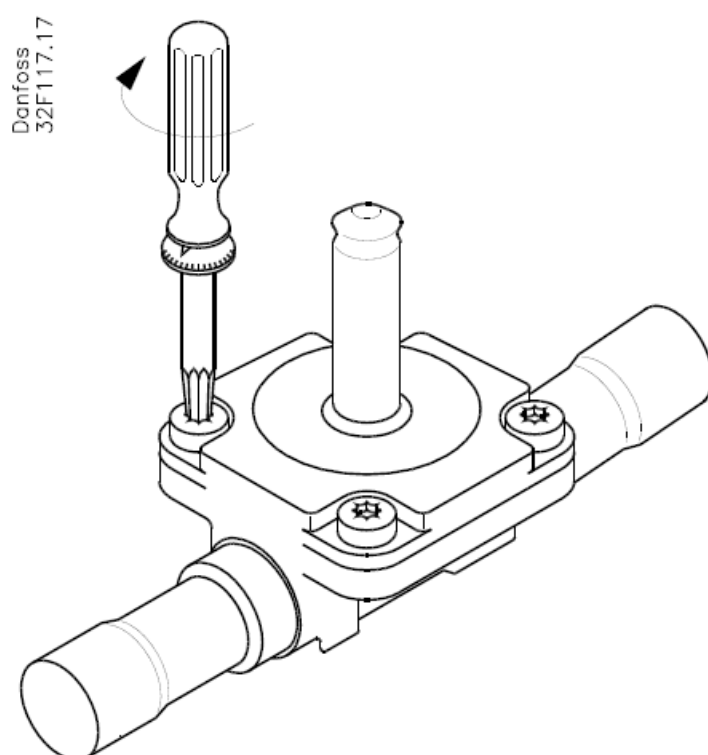
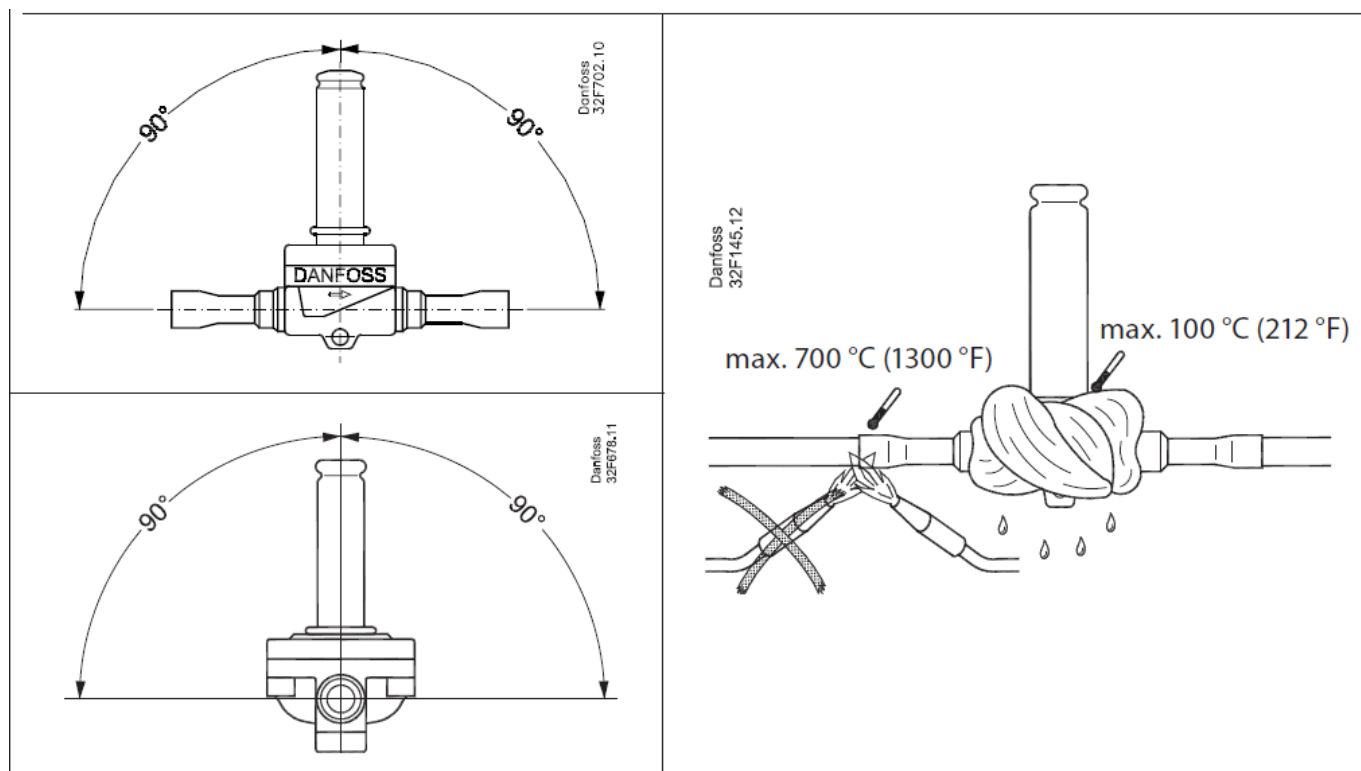
EVRH 10, EVRH 15, EVRH 18,
EVRH20, EVRH 22 (NC)



EVRH 10, EVRH 15, EVRH 20,
EVRH (NO)

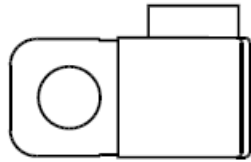
Note: tube
construction





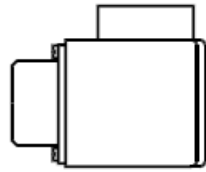
Type	[Nm]	[kpm]	[ft-lbs]	Torx size
EVRH 10	5	0.5	3.6	T30
EVRH 15 – 18	14	1.4	10	T30
EVRH 20 – 22	20	2.0	14	T40

UL approved coils



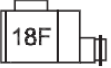



14 W a.c.


$t_{\max.} = 122^{\circ}\text{F} (50^{\circ}\text{C})$

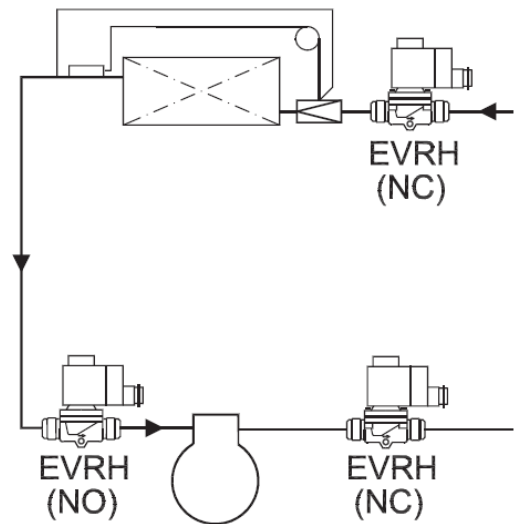


$t_{\min.} = -40^{\circ}\text{F} (-40^{\circ}\text{C})$

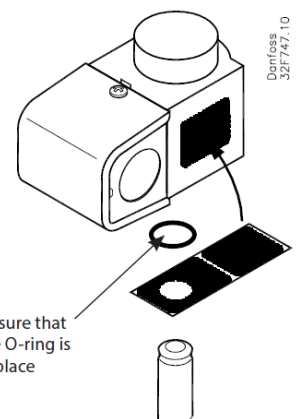
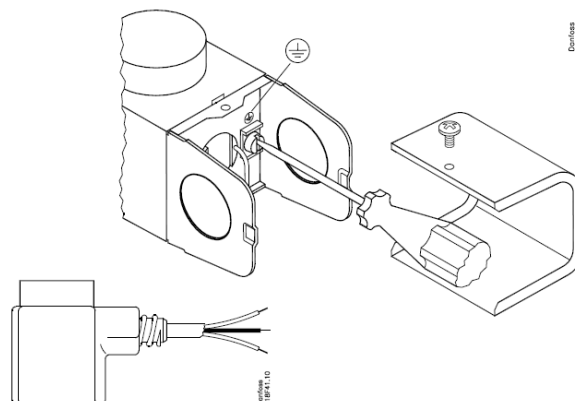
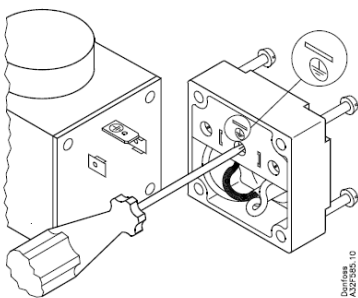
Data on armature tube US data on label

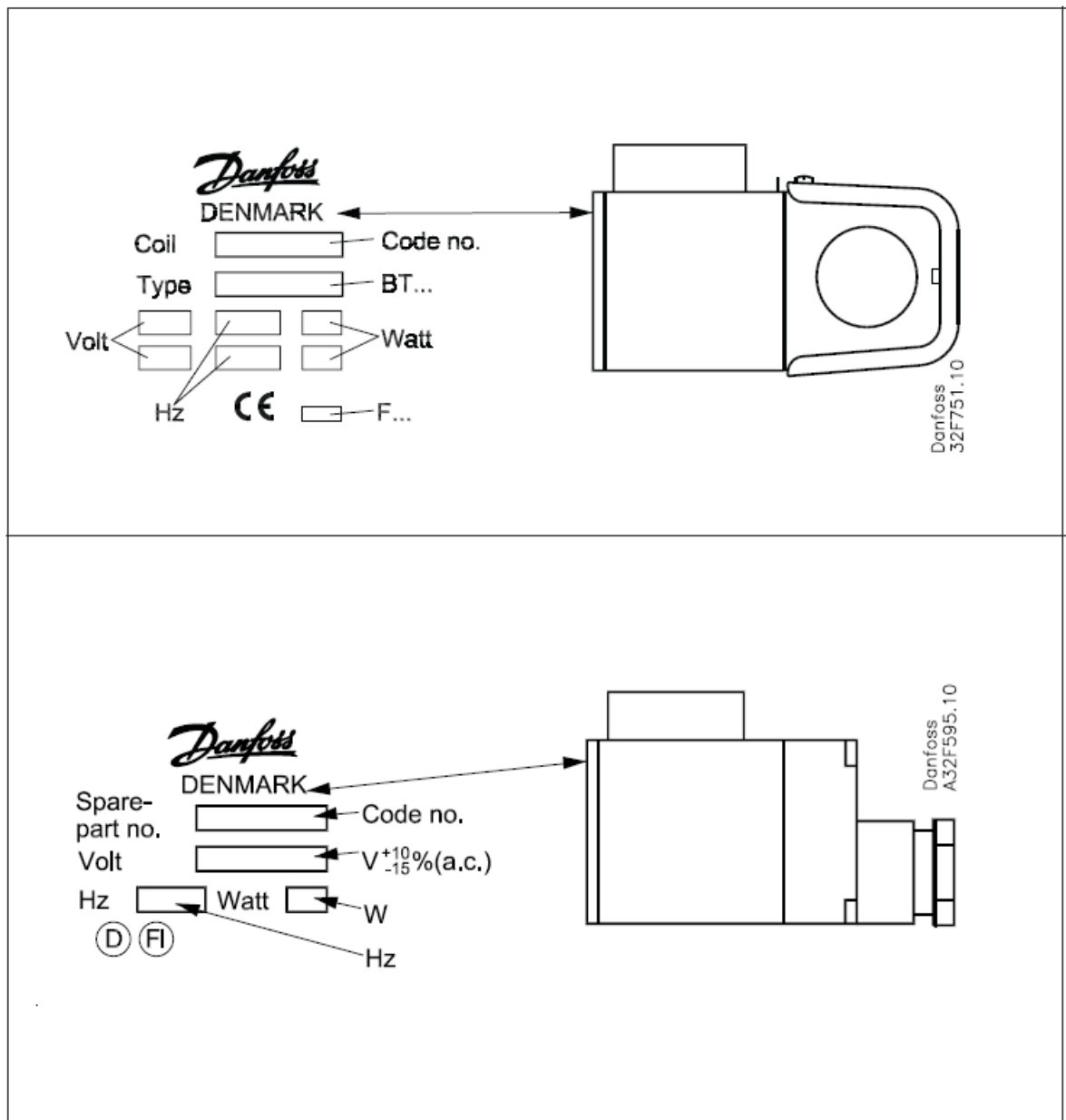
10/12 W a.c.		$t_{\max.} = 80^{\circ}\text{C} (175^{\circ}\text{F})$
20 W a.c.		$t_{\max.} = 50^{\circ}\text{C} (120^{\circ}\text{F})$
20 W a.c.		$t_{\max.} = 50^{\circ}\text{C} (120^{\circ}\text{F})$
		$t_{\min.} = -40^{\circ}\text{C} (175^{\circ}\text{F})$

Min. medium temperature	$-40^{\circ}\text{C} (-40^{\circ}\text{F})$
Max. medium temperature	$-105^{\circ}\text{C} (221^{\circ}\text{F})$
Max. working pressure PS/MWP	45.2 barg / 655 psig
Max. opening diff. pressure MOPD	



Danfoss
32F718.10





Specifications

- **Refrigerants:** R744, R22/R407C, R404A/R507, R410A, R134a, R407A, R23
- **Coil Types:** EVRH 10, EVRH 15, EVRH 18, EVRH 20, EVRH 22 (NC), EVRH 10, EVRH 15, EVRH 20, EVRH (NO)
- UL Approved Coils

Installation

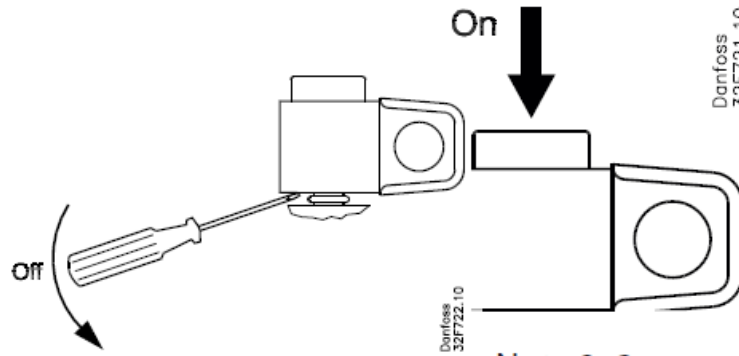
1. Ensure the O-ring is in place before installation.
2. Refer to specific tube construction details for proper installation.
3. Do not switch on power to the coil when dismantled from the valve to prevent damage and injuries.



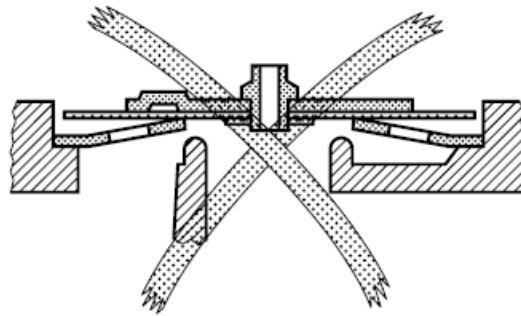
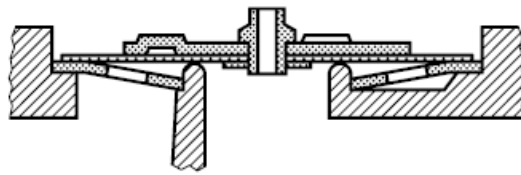
Warning

Never switch on power to the coil when the coil is dismantled from the valve.

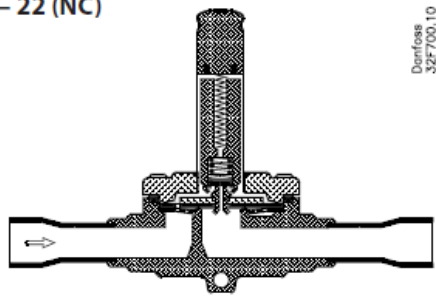
Otherwise the coil may be damaged and there is risk of injuries and burns.



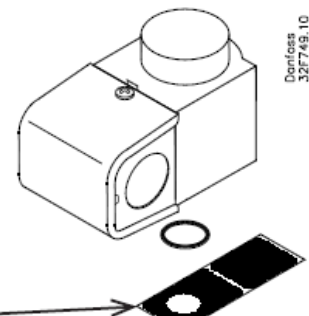
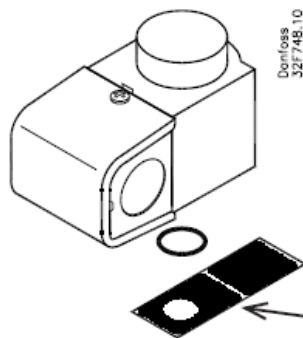
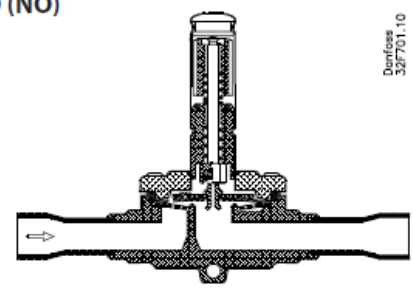
Note 2+3
See instruction
IC.PI.600.A1.22



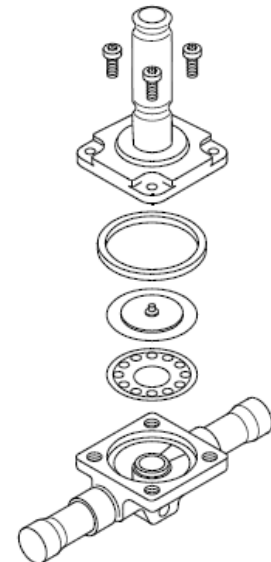
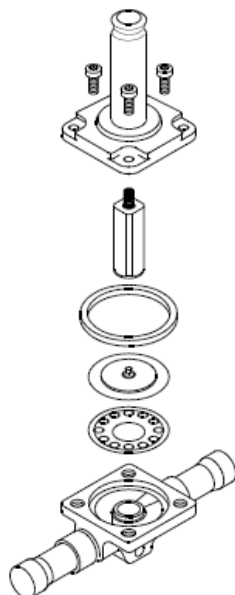
EVRH 10 – 22 (NC)



EVRH 10 – 20 (NO)



Sticker applies only to UL products !



Note: UL approval are only recognized when one of the EVRH series of solenoid valves is combined with a general purpose coil.

Usage

- Ensure the coil is properly mounted on the valve before powering on.
- Consult the label for data on armature tube and other specifications.
- Follow the recommended Torx size for installation.

Maintenance

1. Regularly check for any leaks or damages.
2. Keep the coil and valve clean from dirt and debris.

FAQ


Q: Can I use other refrigerants not listed in the manual?

A: For other refrigerants, please contact Danfoss for compatibility and guidance.

Q: What should I do if the coil is dismantled from the valve?

A: Never switch on power to the coil when dismantled to avoid damage and potential injuries. Always ensure proper mounting before powering on.

Documents / Resources

	<p>Danfoss EVRH 10 22 Solenoid Valve Types [pdf] Installation Guide EVRH 10, EVRH 15, EVRH 18, EVRH 20, EVRH 22, EVRH 10 22 Solenoid Valve Types, EVRH 10 22, Solenoid Valve Types, Valve Types</p>
---	---

References

- [User Manual](#)

[Manuals+.](#) [Privacy Policy](#)

This website is an independent publication and is neither affiliated with nor endorsed by any of the trademark owners. The "Bluetooth®" word mark and logos are registered trademarks owned by Bluetooth SIG, Inc. The "Wi-Fi®" word mark and logos are registered trademarks owned by the Wi-Fi Alliance. Any use of these marks on this website does not imply any affiliation with or endorsement.