



Danfoss EV310A  
Solenoid Valve  
GMS Instruments



# Danfoss EV310A Solenoid Valve GMS Instruments Installation Guide

[Home](#) » [Danfoss](#) » Danfoss EV310A Solenoid Valve GMS Instruments Installation Guide 

## Contents

- [1 Danfoss EV310A Solenoid Valve GMS Instruments](#)
- [2 Specifications](#)
- [3 Installation Instruction](#)
- [4 FAQs](#)
- [5 Documents / Resources](#)
  - [5.1 References](#)
- [6 Related Posts](#)



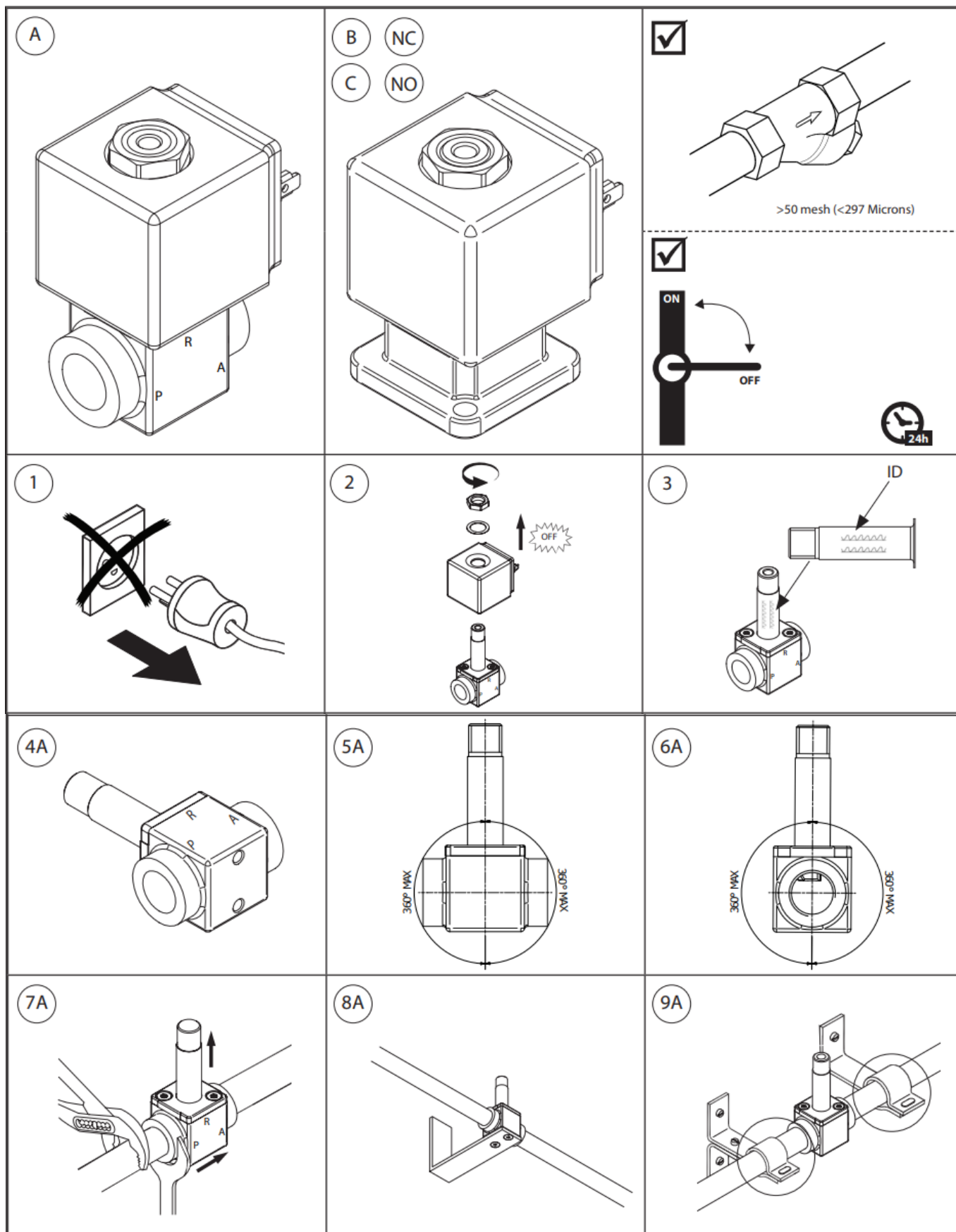
**Danfoss EV310A Solenoid Valve GMS Instruments**

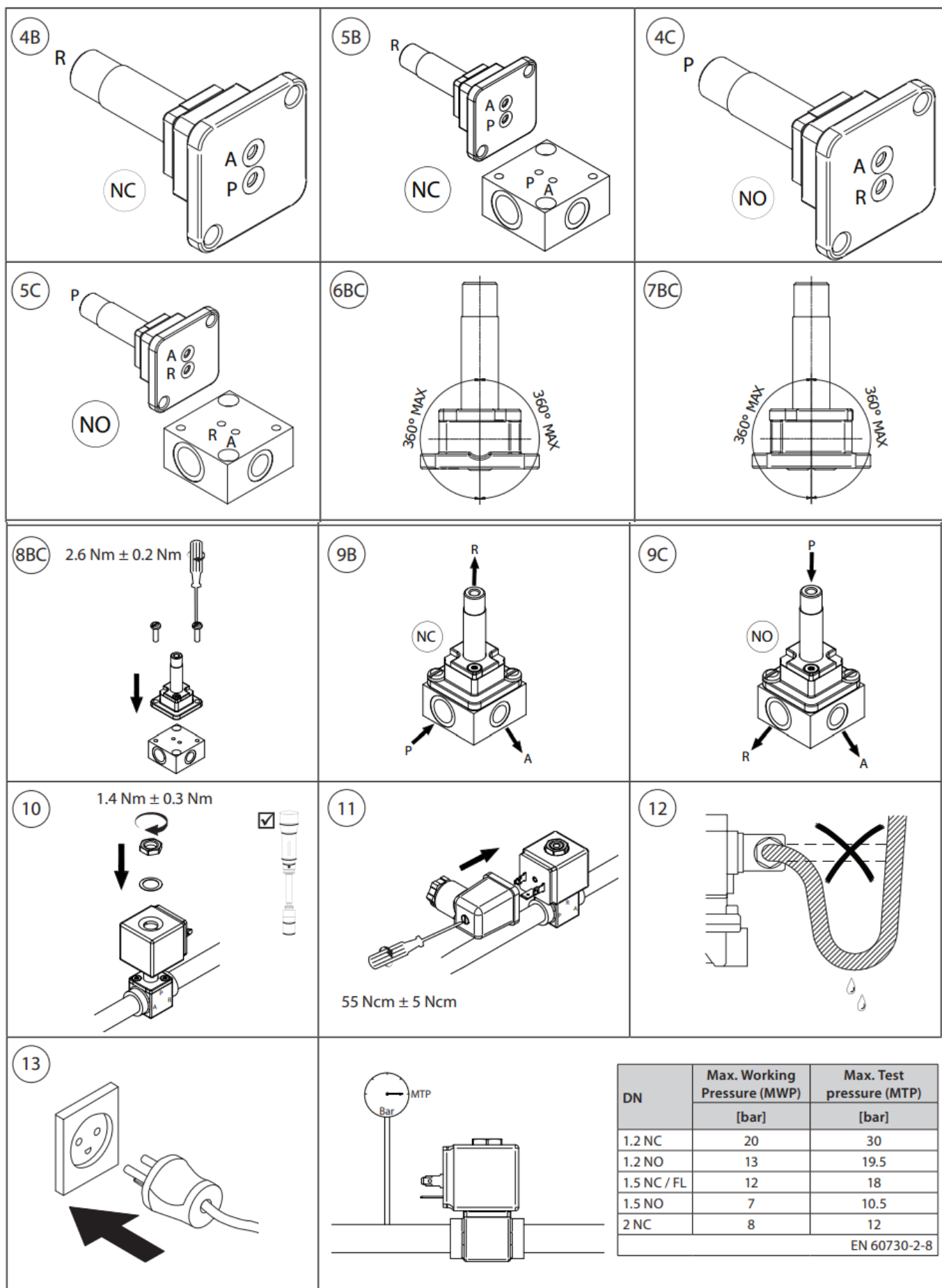


## Specifications

- **Type:** 3-way direct-operated solenoid valve.
- **Flow Direction:** Diverting or mixing based on configuration.
- **Body Material:** Brass or stainless steel (model-dependent).
- **Seal Material:** EPDM, FKM, or NBR, depending on application requirements.
- **Operating Pressure:** Handles low to medium pressure ranges.
- **Connection Sizes:** Typically **G 1/8"**, **G 1/4"**, or similar, depending on the model.
- **Temperature Range:** Varies by seal material but generally supports a wide range for industrial use.
- **Voltage Options:** Multiple coil voltage options, such as **24V DC**, **230V AC**, etc.

## Installation Instruction





### 1. What is the primary use of the Danfoss EV310A?

It is typically used for diverting or mixing fluid flows in heating, cooling, and industrial systems.

### 2. Can it handle corrosive fluids?

Yes, but the material (stainless steel or brass) and seal type must be chosen based on fluid compatibility.

### 3. Is it easy to install?

Yes, the compact design and standardized connections make it straightforward to install.

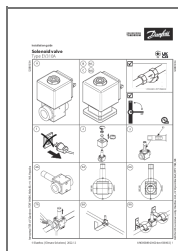
### 4. How do I select the right model?

Consider factors like fluid type, pressure, temperature, and connection size. GMS Instruments can assist in selecting the correct configuration.

### 5. What maintenance is required?

Routine cleaning and inspection of the valve body and seals are recommended to ensure longevity.

## Documents / Resources



[Danfoss EV310A Solenoid Valve GMS Instruments](#) [pdf] Installation Guide  
EV310A Solenoid Valve GMS Instruments, EV310A, Solenoid Valve GMS Instruments, Valve GMS Instruments, GMS Instruments, Instruments

## References

- [User Manual](#)

### [Manuals+](#), [Privacy Policy](#)

This website is an independent publication and is neither affiliated with nor endorsed by any of the trademark owners. The "Bluetooth®" word mark and logos are registered trademarks owned by Bluetooth SIG, Inc. The "Wi-Fi®" word mark and logos are registered trademarks owned by the Wi-Fi Alliance. Any use of these marks on this website does not imply any affiliation with or endorsement.