



Danfoss EV245B Solenoid Valve Installation Guide

[Home](#) » [Danfoss](#) » Danfoss EV245B Solenoid Valve Installation Guide 

ENGINEERING
TOMORROW



Contents

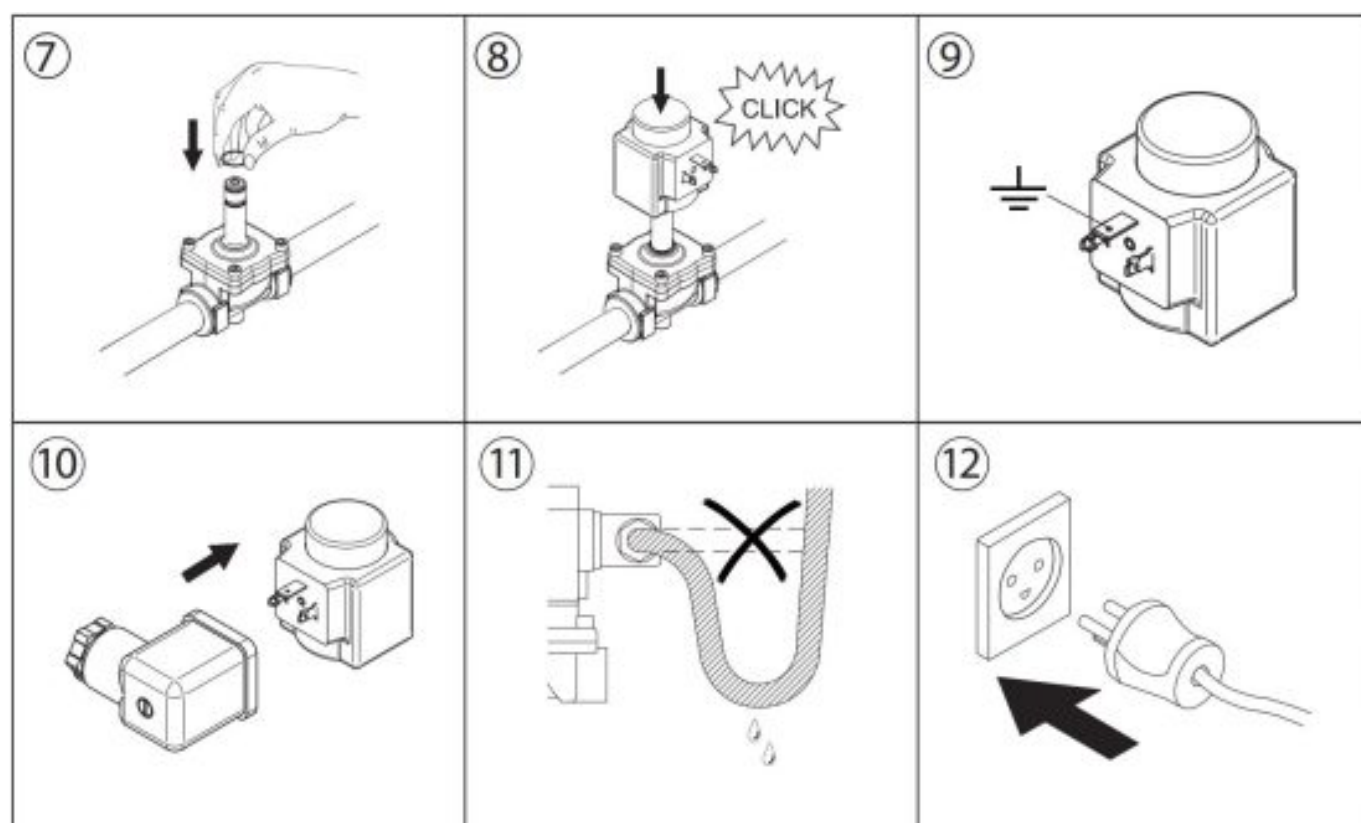
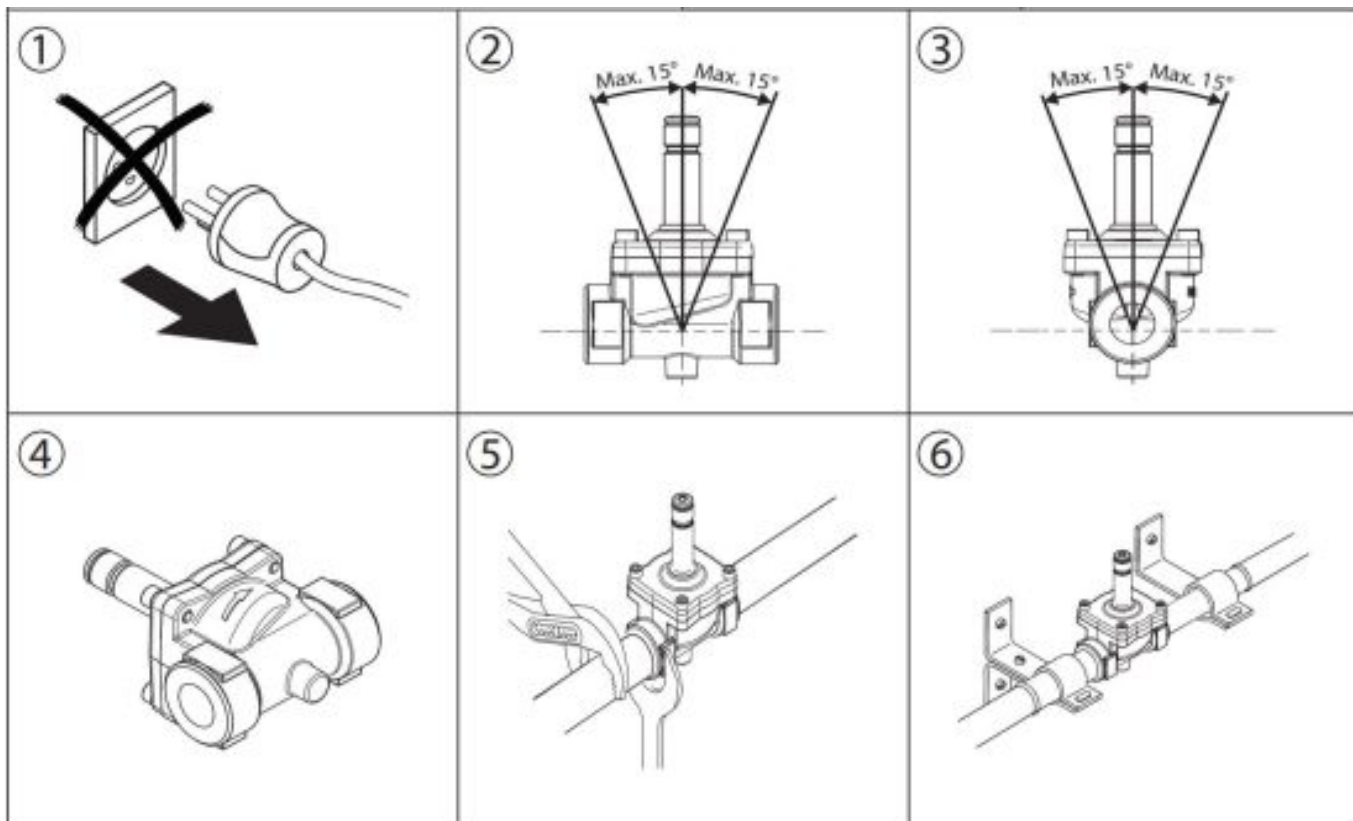
- [1 Danfoss EV245B Solenoid Valve Installation Guide](#)
- [2 Documents / Resources](#)
 - [2.1 References](#)
- [3 Related Posts](#)

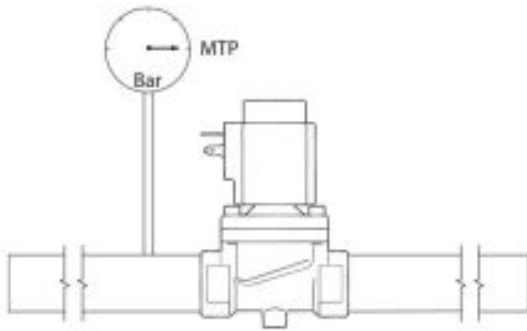
Danfoss EV245B Solenoid Valve Installation Guide



Type EV245B

	<input checked="" type="checkbox"/> <p>≥ 297 Microns</p>	<input checked="" type="checkbox"/>
	<input checked="" type="checkbox"/> <p>min. 0.5 m</p>	<input checked="" type="checkbox"/> <p>185 °C / 365 °F</p>





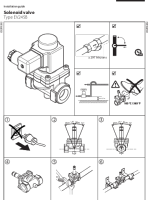
DN	Max. Working Pressure (MWP)	Max. Test Pressure (MTP)
	[bar]	[bar]
15 - 20	10	16
EN 60730-2-8		

Visit www.products.danfoss.com for further technical data

© Danfoss | DCS (az) | 2018.06

Read More About This Manual & Download PDF:

Documents / Resources



[Danfoss EV245B Solenoid Valve \[pdf\] Installation Guide](#)
032R9282, EV2545B, EV245B Solenoid Valve, Solenoid Valve, Valve

References

- [Danfoss France Product Store | Homepage](#)
- [User Manual](#)

[Manuals+](#), [Privacy Policy](#)

This website is an independent publication and is neither affiliated with nor endorsed by any of the trademark owners. The "Bluetooth®" word mark and logos are registered trademarks owned by Bluetooth SIG, Inc. The "Wi-Fi®" word mark and logos are registered trademarks owned by the Wi-Fi Alliance. Any use of these marks on this website does not imply any affiliation with or endorsement.