

Danfoss

**EV228BW
Solenoid
Valve**



Danfoss EV228BW Solenoid Valve Installation Guide

[Home](#) » [Danfoss](#) » Danfoss EV228BW Solenoid Valve Installation Guide 

Contents

- [1 Danfoss EV228BW Solenoid Valve](#)
- [2 Product Usage Instructions](#)
- [3 Installation guide](#)
- [4 FAQs](#)
- [5 Documents / Resources](#)
 - [5.1 References](#)

Danfoss

Danfoss EV228BW Solenoid Valve



Product Specifications

- Model: Solenoid Valve Type EV228BW 15-50
- Coil Type: BB/BE DC
- Working Voltage: DC 12 / 24 V
- Operating Pressure: Max.. 10 bar
- Test Pressure: Max. 25 bar
- Approvals: Drinking water approval, CERTIFIERAD 1002
- Compatible Pipe Sizes: DN 15 – 50

Product Usage Instructions

Installation

1. Ensure the solenoid valve is compatible with your system.
2. Connect the coil type BB/BE DC to the designated port on the valve.
3. Provide a power supply of DC 12/24V to the valve.
4. Make sure the valve is securely installed in the pipeline.

Operation

1. To turn the valve ON, apply power to the coil.
2. To turn the valve OFF, remove power from the coil.
3. The valve operates on a latched/unlatched mechanism – refer to the manual for details.

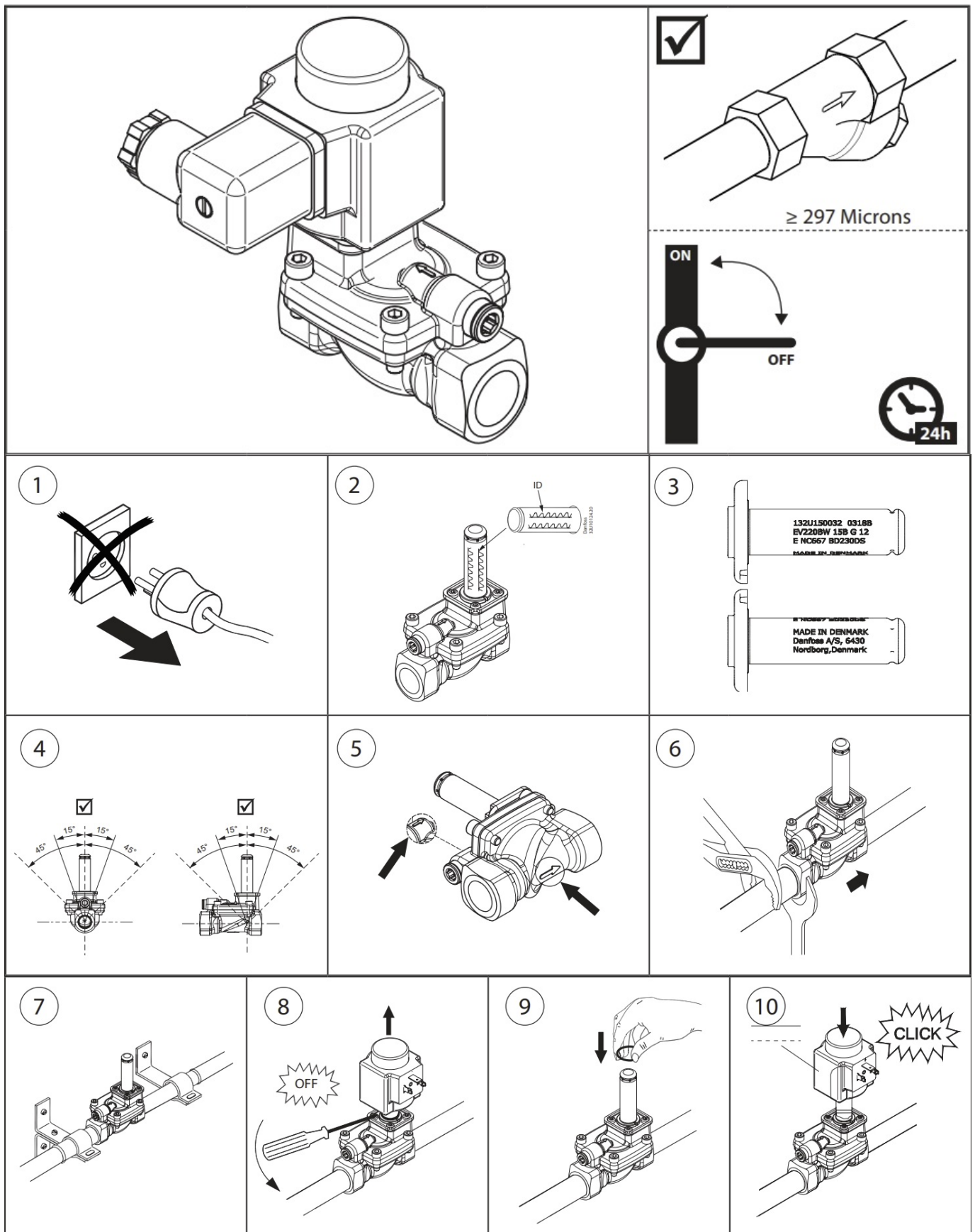
Maintenance

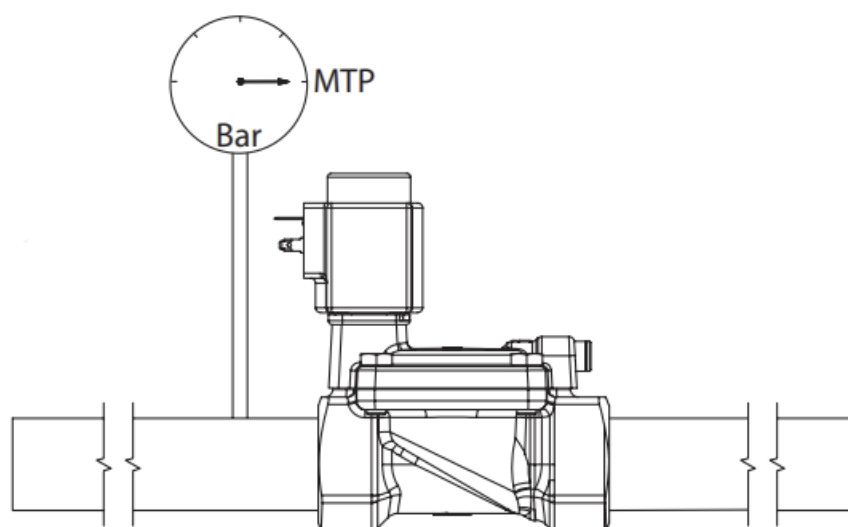
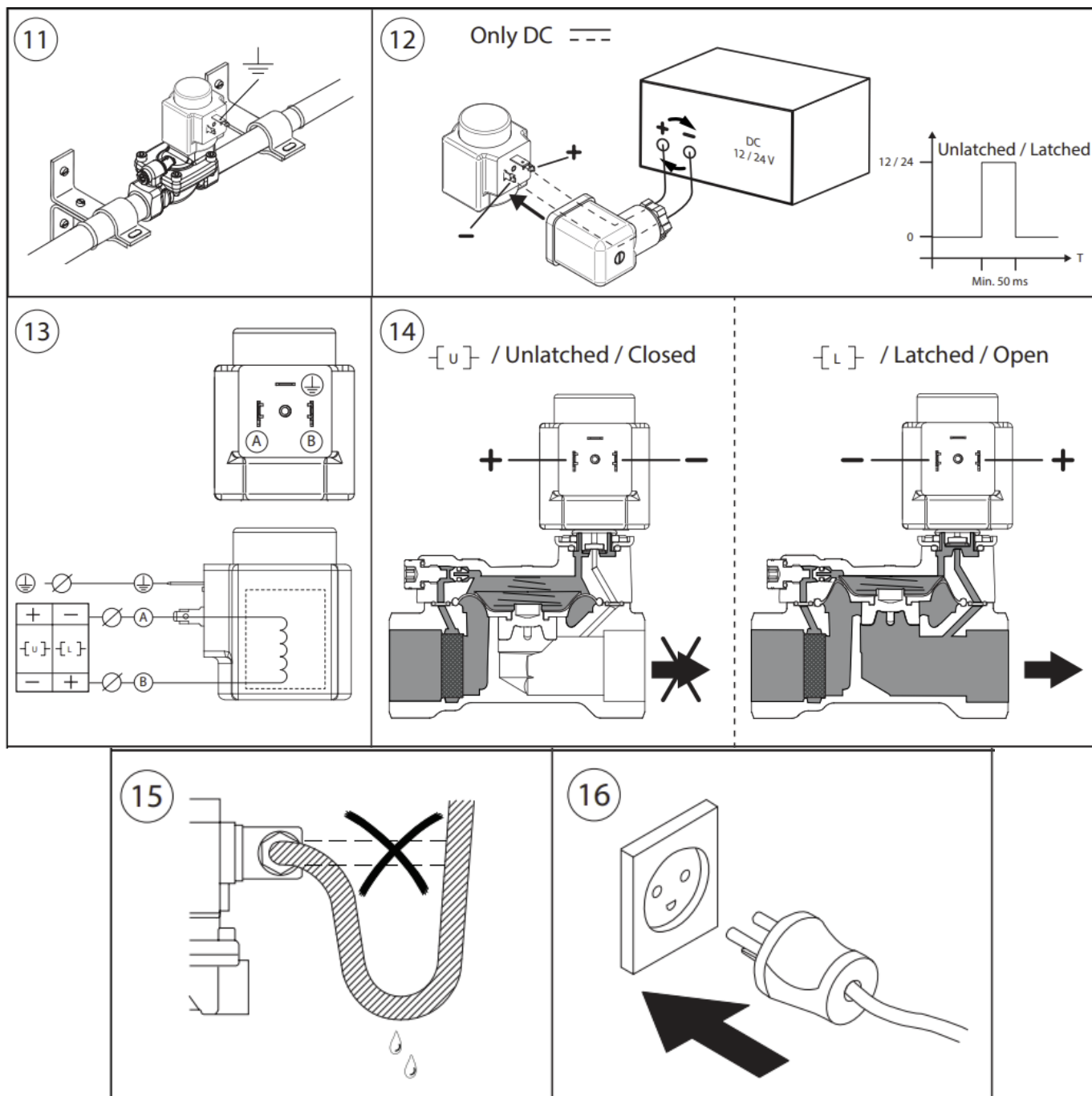
1. Regularly check for leaks or malfunctions.
2. Clean the valve and coil as needed to ensure proper functioning.
3. Refer to the manual for any specific maintenance requirements.




Installation guide

Solenoid valve

Type EV228BW 15-50 + Coil type BB/BE DC





Drinking water approval			
CERTIFIERAD	Certificate		
			
 1002	Valid in	Max. Working	Max. Test pressure (PT)
no.		DN	Pressure (MWP) [bar]
 356 Inspected by DTI]	[bar]
EV228BW 15-50	DK, SE	15 – 50	10
SCO155-18	http://pub.liccert.extweb.sp.se/sv/Product/List/		25
Wetted parts in accordance with DVGW, 4MS, KTW and W270			EN 60730-2-8
Besök www.danfoss.se för mer tekniska data. Besøg www.danfoss.dk for flere tekniske data. Rendez-vous sur le site www.products.danfoss.fr pour plus de données techniques.			
Visit www.products.danfoss.com for further technical data. Para más información, visite www.products.danfoss.es			

- Any information, including, but not limited to information on selection of product, its application or use, product design, weight, dimensions, capacity or any other technical data in product manuals, catalogues descriptions, advertisements, etc, and whether made available in writing, orally, electronically, online or via download, shall be considered informative, and is only binding if and to the extent, explicit reference is made in a quotation or order confirmation. Danfoss cannot accept any responsibility for possible errors in catalogues, brochures, videos and other material.
- Danfoss reserves the right to alter its products without notice. This also applies to products ordered but not delivered provided that such alterations can be made without changes to form, fit or function of the product.
- All trademarks in this material are the property of Danfoss A/S or Danfoss group companies. Danfoss and the Danfoss logo are trademarks of Danfoss A/S- All rights reserved.

FAQS

Q: What is the maximum working pressure of the solenoid valve?

A: The maximum working pressure is 10 bar.

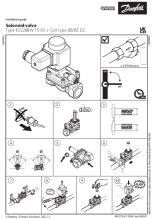
Q: Is the solenoid valve suitable for drinking water applications?

A: Yes, the valve has drinking water approval and is CERTIFIED 1002.

Q: What are the compatible pipe sizes for this valve?

A: The valve is compatible with pipe sizes DN 15 – 50.

Documents / Resources



[Danfoss EV228BW Solenoid Valve](#) [pdf] Installation Guide
132R9001, 32U10124.20, EV228BW Solenoid Valve, Solenoid Valve, Valve

References

- [publiccert.extweb.sp.se/sv/Product/List/](#)
- [Danfoss France Product Store | Homepage](#)
- [User Manual](#)

Manuals+, [Privacy Policy](#)

This website is an independent publication and is neither affiliated with nor endorsed by any of the trademark owners. The "Bluetooth®" word mark and logos are registered trademarks owned by Bluetooth SIG, Inc. The "Wi-Fi®" word mark and logos are registered trademarks owned by the Wi-Fi Alliance. Any use of these marks on this website does not imply any affiliation with or endorsement.