

Danfoss

EV210B Solenoid Valve
Type



Danfoss EV210B Solenoid Valve Type Installation Guide

[Home](#) » [Danfoss](#) » Danfoss EV210B Solenoid Valve Type Installation Guide 

Contents

- [1 Danfoss EV210B Solenoid Valve Type](#)
- [2 Product Specifications](#)
- [3 Installation Guide](#)
- [4 Operation](#)
- [5 Frequently Asked Questions](#)
- [6 Documents / Resources](#)
 - [6.1 References](#)

Danfoss

Danfoss EV210B Solenoid Valve Type



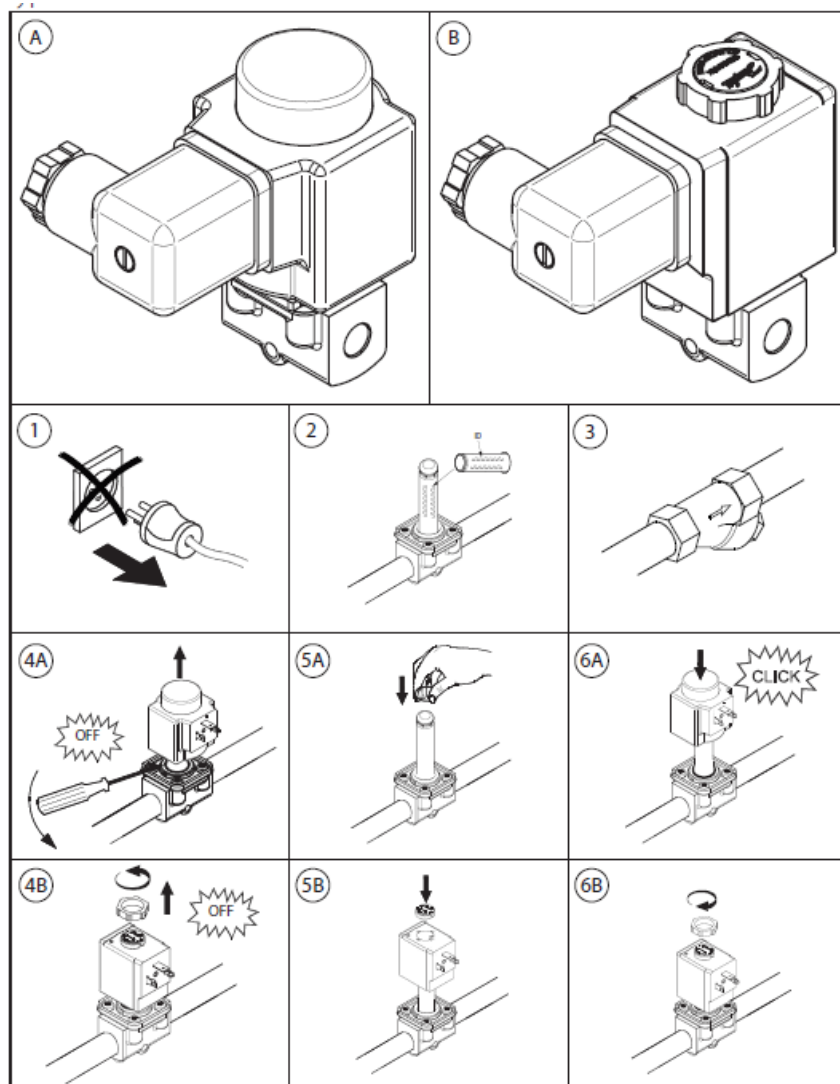
Product Specifications

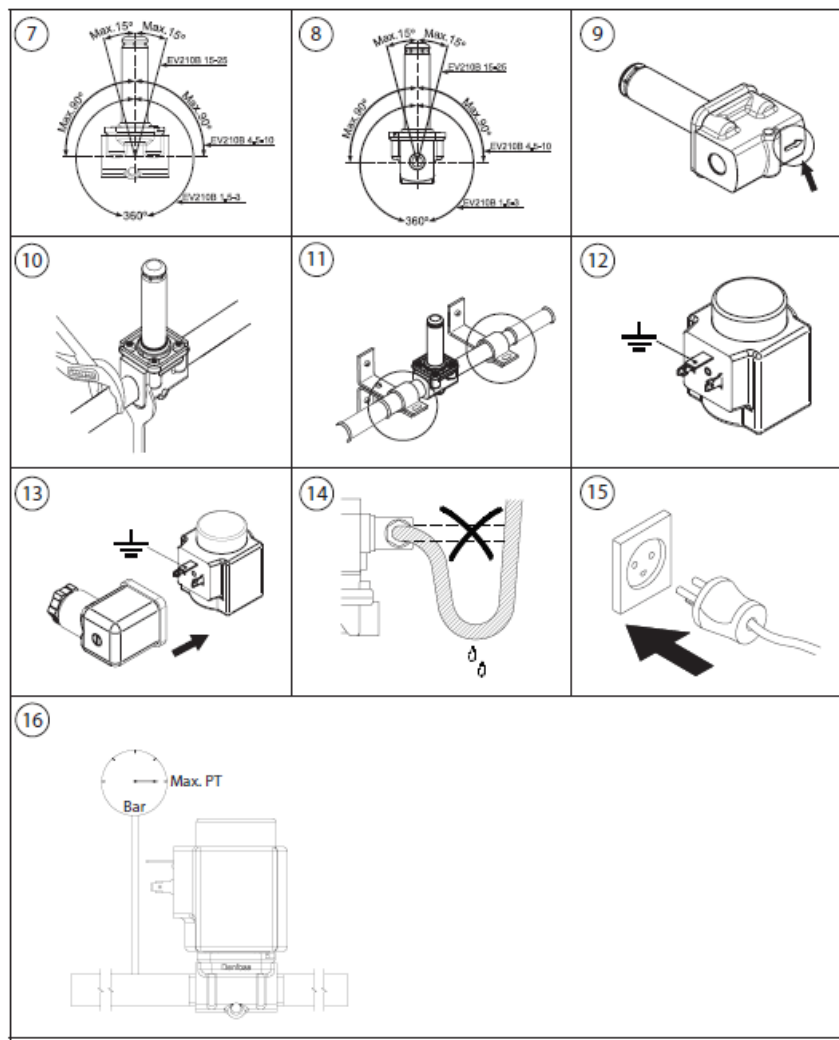
- Model: EV210B Solenoid Valve
- Max. PT Bar:
 - DN 1.5 – 4.5: 35 bar
 - 6 – 10: 25 bar
 - 15 – 25: 16 bar
- Max. Test Pressure PT:
 - DN 1.5 – 4.5: 52.5 bar
 - 6 – 10: 37.5 bar
 - 15 – 25: 24 bar
- Compliant with EN 60730-2-8 standards

Installation Guide

Follow these steps for proper installation of the solenoid valve:

1. Identify the components A, B, ID, and OFF.
2. Connect wires as per the wiring diagram provided (4A, 4B, 5A, 5B, 6A, 6B).
3. Ensure proper positioning and secure mounting of the valve.
4. Check for leaks and test the functionality before operation.





Operation

To operate the solenoid valve:

1. Apply the appropriate power supply voltage as specified in the manual.
2. Toggle the valve using the ON/OFF controls based on your application requirements.
3. Maintain recommended pressure levels to ensure optimal performance.

DN	MWP	Max. test pressure PT
	[bar]	[bar]
1.5 – 4.5	35	52.5
6 – 10	25	37.5
15 – 25	16	24

EN 60730-2-8

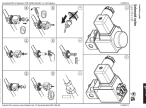
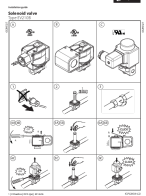
Visit www.products.danfoss.com for further technical data

- Any information, including, but not limited to information on selection of product, its application or use, product design, weight, dimensions, capacity or any other technical data in product manuals, catalogues descriptions, advertisements, etc. and whether made available in writing, orally, electronically, online or via download, shall be considered informative, and is only binding if and to the extent, explicit reference is made in a quotation or order confirmation, Danfoss cannot accept any responsibility for possible errors in catalogues, brochures, videos and other material,
- Danfoss reserves the right to alter its products without notice. This also applies to products ordered but not delivered, provided that such alterations can be made without changes to the form fit, or function of the product.
- All trademarks in this material are the property of Danfoss A/S or Danfoss group companies. Danfoss and the Danfoss logo are trademarks of Danfoss A/S. All rights reserved.
- Danfoss | Climate Solutions | 2022.12
- AN20058642255001-000202 | 2

Frequently Asked Questions

- **Q: What is the maximum pressure rating of the EV210B solenoid valve?**
A: The maximum pressure ratings vary based on the DN size of the valve: 35 bar for DN 1.5 – 4.5, 25 bar for 6 – 10, and 16 bar for 15 – 25.
- **Q: How do I wire the solenoid valve for proper operation?**
A: Follow the wiring diagram provided in the manual, connecting wires to terminals 4A, 4B, 5A, 5B, 6A, and 6B as instructed.

Documents / Resources

	<p>Danfoss EV210B Solenoid Valve Type [pdf] Installation Guide 04080, 80, 168, EV210B Solenoid Valve Type, EV210B, Solenoid Valve Type, Valve Type</p>
	<p>Danfoss EV210B Solenoid Valve Type [pdf] Installation Guide 18F120.10, 18F119.10, 32F905.11, 32F903.11, EV210B Solenoid Valve Type, EV210B, Solenoid Valve Type, Valve Type</p>

References

-  [Danfoss France Product Store | Homepage](#)
- [User Manual](#)