

*Danfoss*  
**EV210A Solenoid  
Valve Type**



## Danfoss EV210A Solenoid Valve Type Installation Guide

[Home](#) » [Danfoss](#) » Danfoss EV210A Solenoid Valve Type Installation Guide 

### Contents

- [1 Danfoss EV210A Solenoid Valve Type](#)
- [2 Specifications](#)
- [3 OVERVIEW](#)
- [4 INSTALLATION INSTRUCTION](#)
- [5 Product Usage Instructions](#)
- [6 FAQs](#)
- [7 Documents / Resources](#)
  - [7.1 References](#)



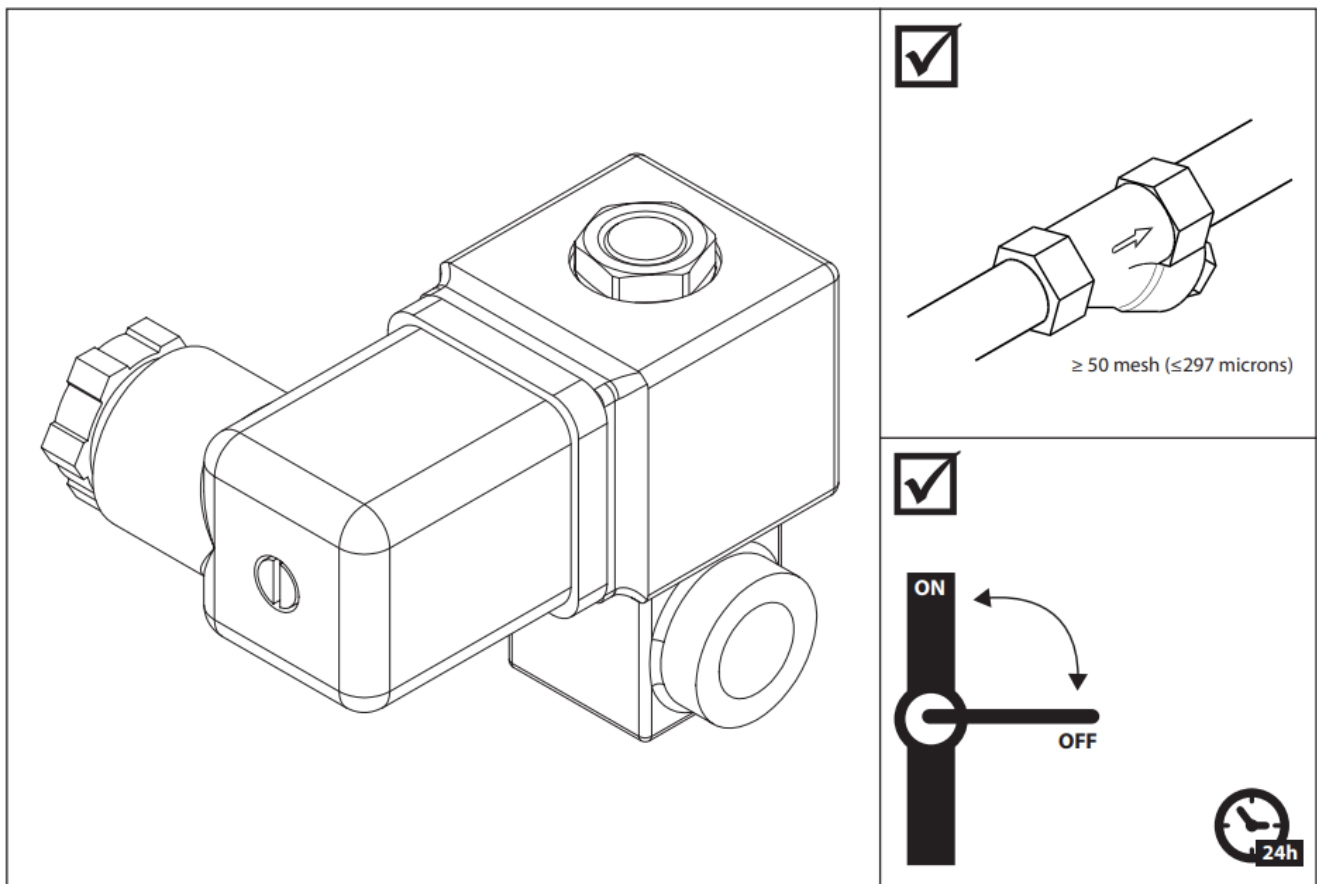
**Danfoss EV210A Solenoid Valve Type**



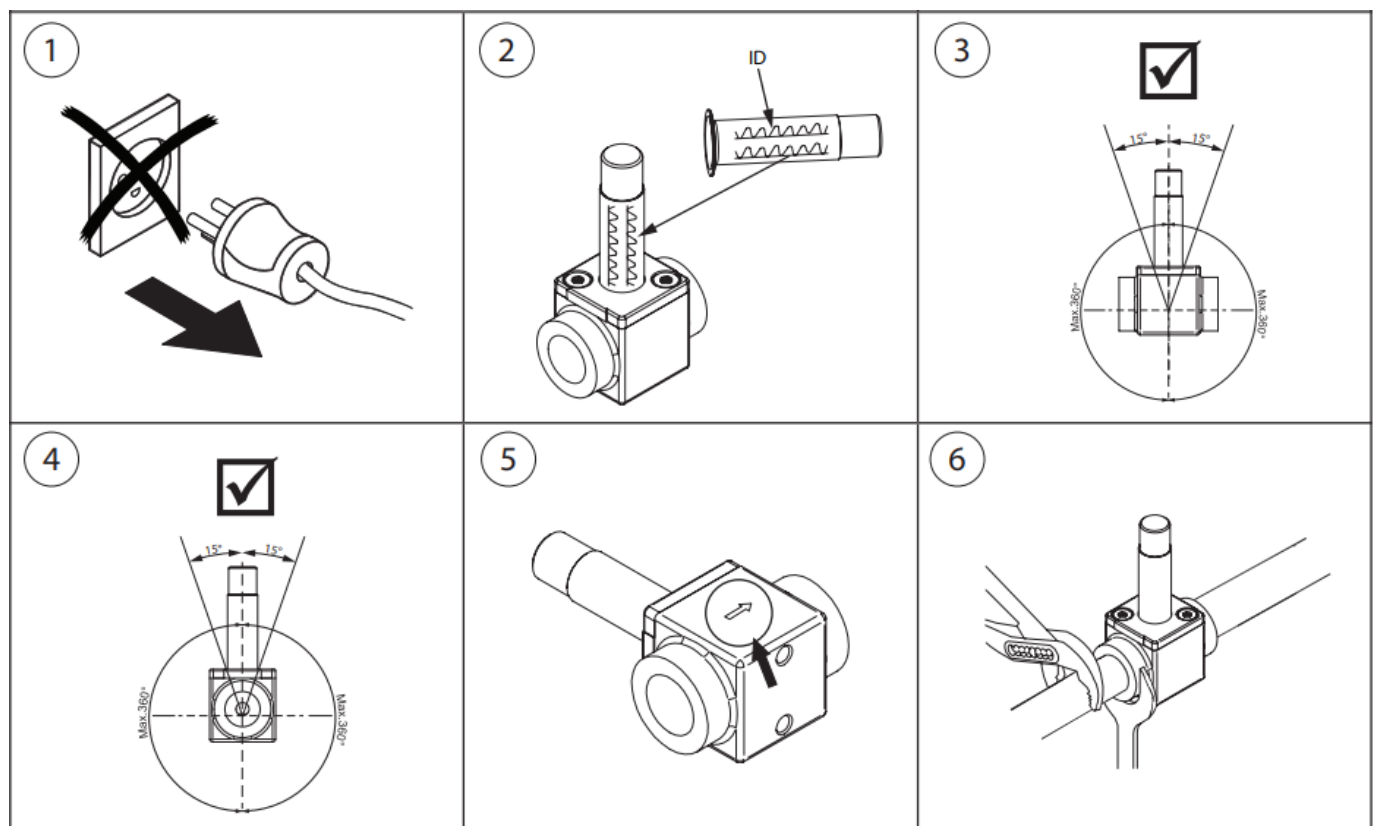
## Specifications

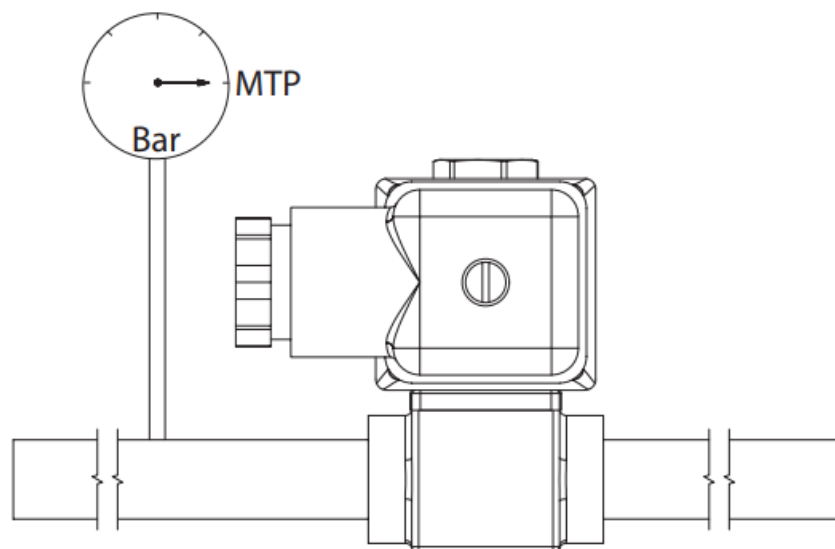
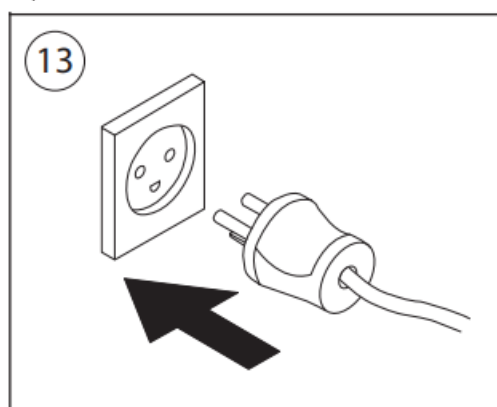
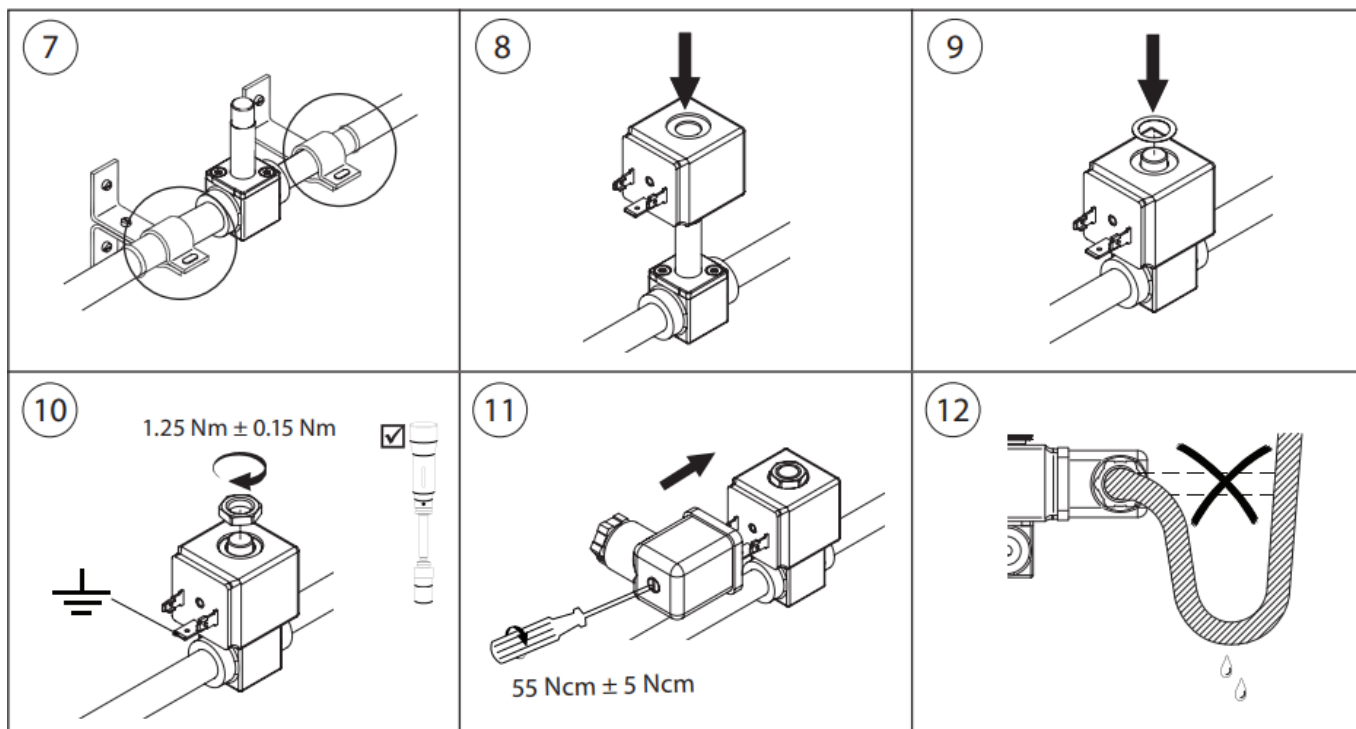
- **Product:** Solenoid Valve Type EV210A 089 032R9270
- **Manufacturer:** Danfoss Ltd.
- **Address:** 22 Wycombe End, HP9 1NB, GB
- **Mesh Size:** 50 mesh (297 microns)
- **Operating Modes:** ON/OFF
- 24-hour operation
- Max. Working Pressure (MWP):
  - DN 1: 30 bar
  - DN 2: 20 bar
  - DN 2.5: 14 bar
  - DN 3: 11 bar
- Max. Test Pressure (MTP):
  - DN 1: 45 bar
  - DN 2: 30 bar
  - DN 2.5: 21 bar
  - DN 3: 16.5 bar
- Standard: EN60730-2-8

## OVERVIEW



## INSTALLATION INSTRUCTION





DN	Max. working pressure (MWP)	Max. test pressure (MTP)
	[bar]	[bar]
1,2 – 2	30	45
2,5	20	30
3	14	21
3,5	11	16,5
EN60730-2-8		

Visit [www.products.danfoss.com](http://www.products.danfoss.com) for further technical data

Any information, including, but not limited to information on selection of product, its application or use, product design, weight, dimensions, capacity or any other technical data in product manuals, catalogues descriptions, advertisements, etc. and whether made available in writing, orally, electronically, online or via download, shall be considered informative, and is only binding if and to the extent, explicit reference is made in a quotation or order confirmation. Danfoss cannot accept any responsibility for possible errors in catalogs, brochures, videos, and other material. Danfoss reserves the right to alter its products without notice. This also applies to products ordered but not delivered provided that such alterations can be made without changes to form, fit or function of the product. All trademarks in this material are the property of Danfoss A/S or Danfoss group companies. Danfoss and the Danfoss logo are trademarks of Danfoss A/S. All rights reserved.

## Product Usage Instructions

### Installation

1. Ensure that the installation area is clean and free from debris.
2. Connect the solenoid valve according to the provided diagram and instructions.
3. Tighten all connections securely, but avoid over-tightening to prevent damage.
4. Verify that the valve is properly aligned and not under strain.

### Operation

- To turn the valve ON, apply the appropriate electrical signal as per your system requirements.
- To turn the valve OFF, remove the electrical signal or power source.
- The valve is designed for continuous 24-hour operation.

### Maintenance

1. Regularly check for leaks or unusual sounds during operation.
2. Clean the valve and the surrounding area to prevent dirt buildup.
3. If maintenance is required, follow the manufacturer's guidelines for disassembly and cleaning.

## FAQs

**Q: What is the maximum working pressure for this solenoid valve?**

A: The maximum working pressure varies depending on the size (DN) of the valve. Refer to the specifications for detailed information.

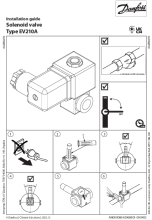
**Q: Can this solenoid valve be used for hot water systems?**

A: The suitability for hot water systems depends on the temperature ratings of the materials used in the valve. Check with the manufacturer for specific details.

**Q: How do I troubleshoot if the solenoid valve is not opening or closing properly?**

A: Check the electrical connections, power source, and ensure there are no blockages in the valve. If issues persist, contact technical support for further assistance.

## Documents / Resources

	<p><a href="#">Danfoss EV210A Solenoid Valve Type</a> [pdf] Installation Guide 089, 032R9270, EV210A Solenoid Valve Type, EV210A, Solenoid Valve Type, Valve Type</p>
---	---

## References

-  [Danfoss France Product Store | Homepage](#)
- [User Manual](#)

[Manuals+.](#) [Privacy Policy](#)

This website is an independent publication and is neither affiliated with nor endorsed by any of the trademark owners. The "Bluetooth®" word mark and logos are registered trademarks owned by Bluetooth SIG, Inc. The "Wi-Fi®" word mark and logos are registered trademarks owned by the Wi-Fi Alliance. Any use of these marks on this website does not imply any affiliation with or endorsement.