



Danfoss ETC 1H KoolProg Software User Guide

[Home](#) » [Danfoss](#) » Danfoss ETC 1H KoolProg Software User Guide 



User Guide
KoolProg®
ENGINEERING TOMORROW

Contents

- 1 ETC 1H KoolProg Software
- 2 Introduction
- 3 Downloading .exe file
- 4 System requirements
- 5 Installing software
- 6 Connection with controllers
- 7 Starting the program
- 8 Set parameters
- 9 Copy to device
- 10 Online service
- 11 Unknown controller support
- 12 Documents / Resources
 - 12.1 References

ETC 1H KoolProg Software



Introduction

Configuring and testing the Danfoss electronic controllers has never been as easy as with the new KoolProg PC software.

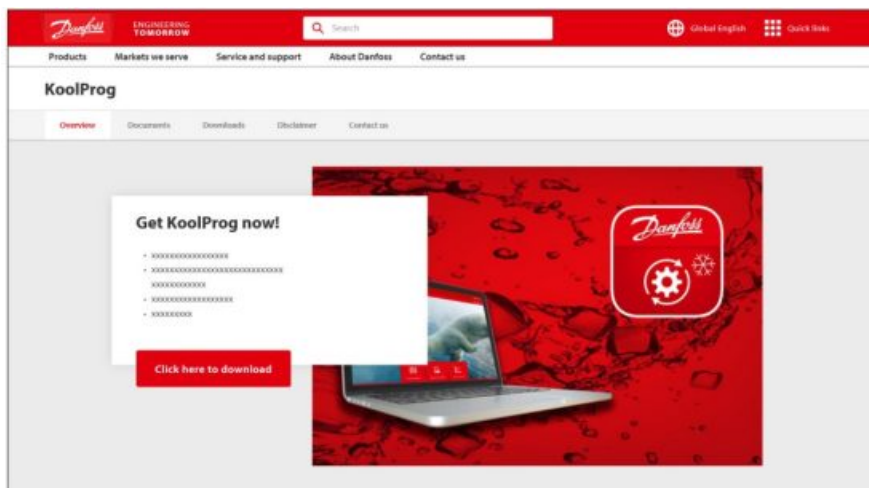
With one KoolProg software, you can now take advantage of new intuitive features such as the selection of favorite parameter lists, writing on-line as well as off-line program files, and monitoring or simulating alarm status activities. These are only some of the new features that will minimize the time R&D and production will spend on development, programming, and testing the Danfoss range of commercial refrigeration controllers.

Supported Danfoss products: ETC 1H, EETC/EETa, ERC 111/112/113, ERC 211/213/214, EKE 1A/B/C, AK-CC55, EKF 1A/2A, EKE 100, EKC 22x.

The following instructions will guide you through the installation and first time usage of KoolProg

Downloading .exe file

Download KoolProgSetup.exe file from the location: <http://koolprog.danfoss.com>



System requirements

This software is intended for a single user and recommended system requirements as below.

OS	Windows 10 or Windows 11, 64 bit
RAM	8 GB RAM
HD Space	200 GB and 250 GB
Required software	MS Oce 2010 and above
Interface	USB 3.0

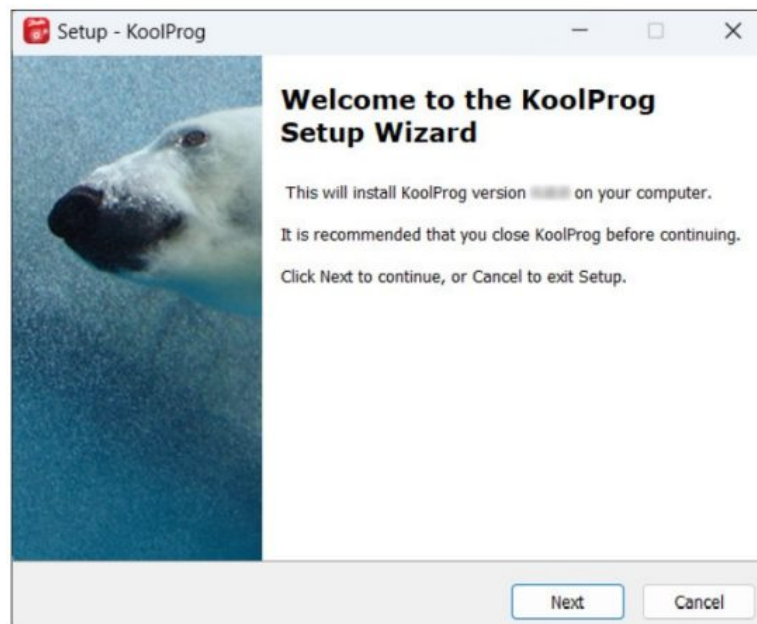
Macintosh operating system is not supported.

Running the set-up directly from a Windows server or network file server is not recommended.

Installing software

- Double click on the KoolProg® set-up icon.

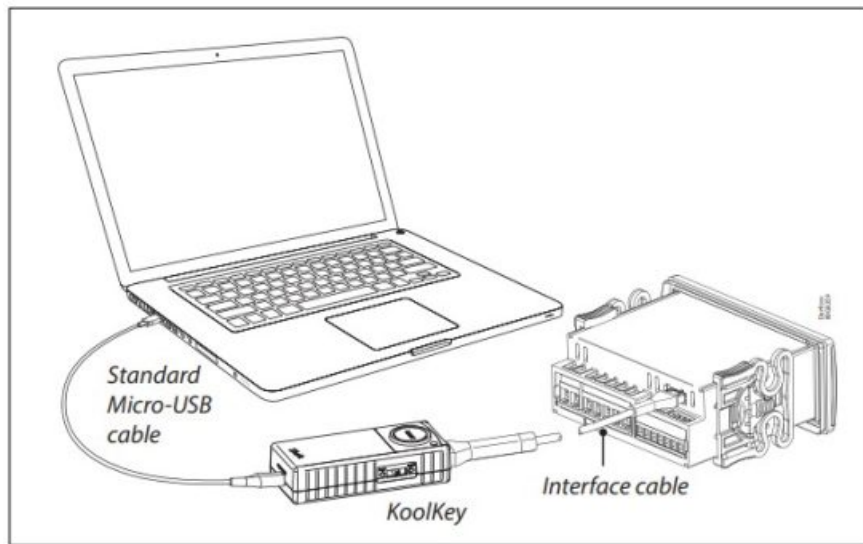
Run the installation wizard and follow the on-screen instructions to complete the KoolProg® installation.



Note: If you encounter a “Security warning” during installation, please click on “Install this driver software anyway”.

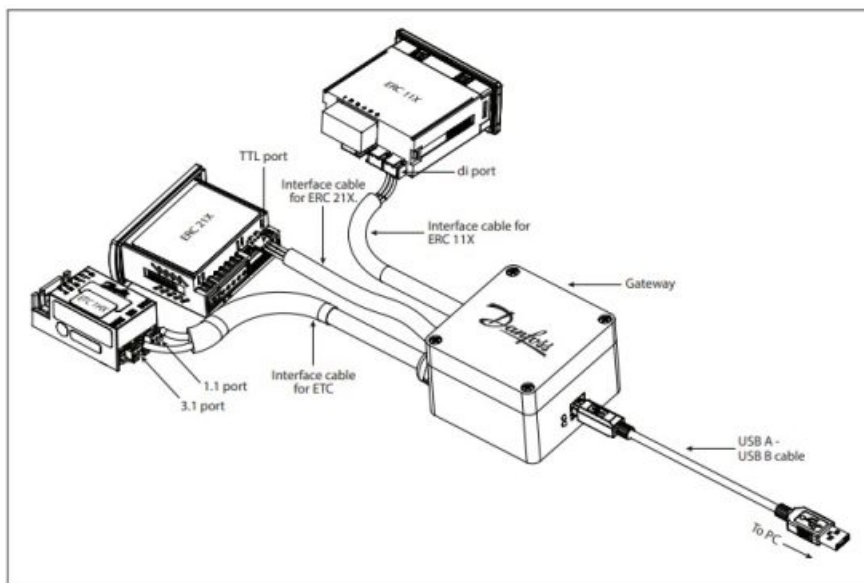
Connection with controllers

Fig 1: EET, ERC21x and ERC11x controllers using KoolKey (code no. 080N0020) as a Gateway



1. Connect the KoolKey to the PC's USB port using standard micro USB cable.
2. Connect the controller to KoolKey using an interface cable of respective controller.

Fig 2: ERC11x, ERC21x and ETC1Hx using Danfoss Gateway (code no. 080G9711)



1. Connect the USB cable to the PC's USB port.
2. Connect the controller using respective cable.



CAUTION: Please ensure that only one controller is connected at any time.

For more details on programming setting file to controller using KoolKey and Mass Programming Key please refer following links: [KoolKey \(EKA200\)](#) and [Mass Programming Key \(EKA201\)](#).

Fig 3: Connection for EKE using interface type MMIMYK (code no. 080G0073)

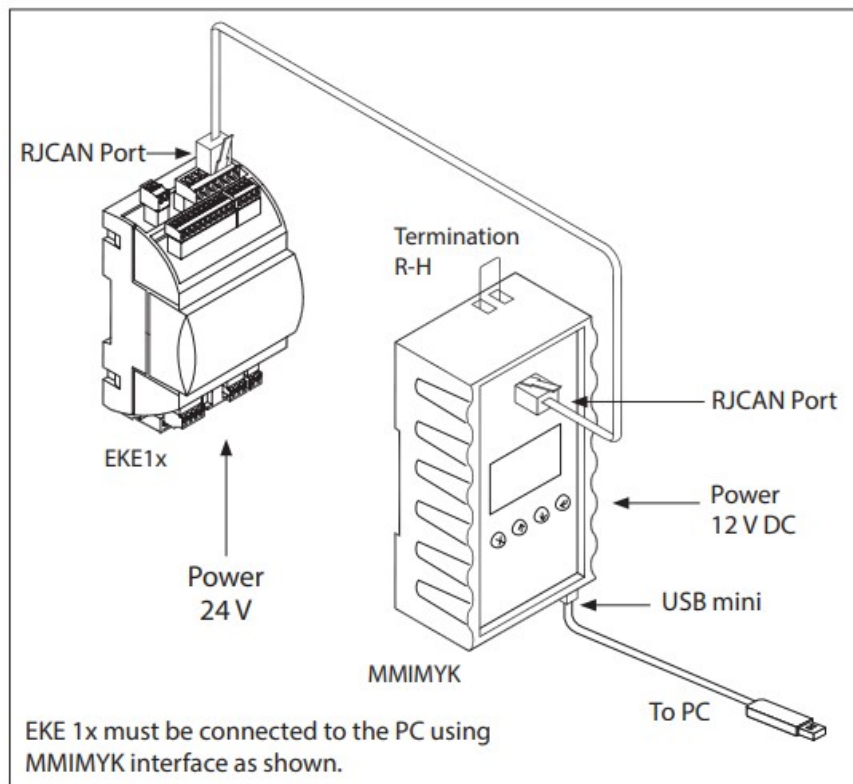


Fig 4: Connection for AK-CC55 using interface type MMIMYK (Code No. 080G0073)

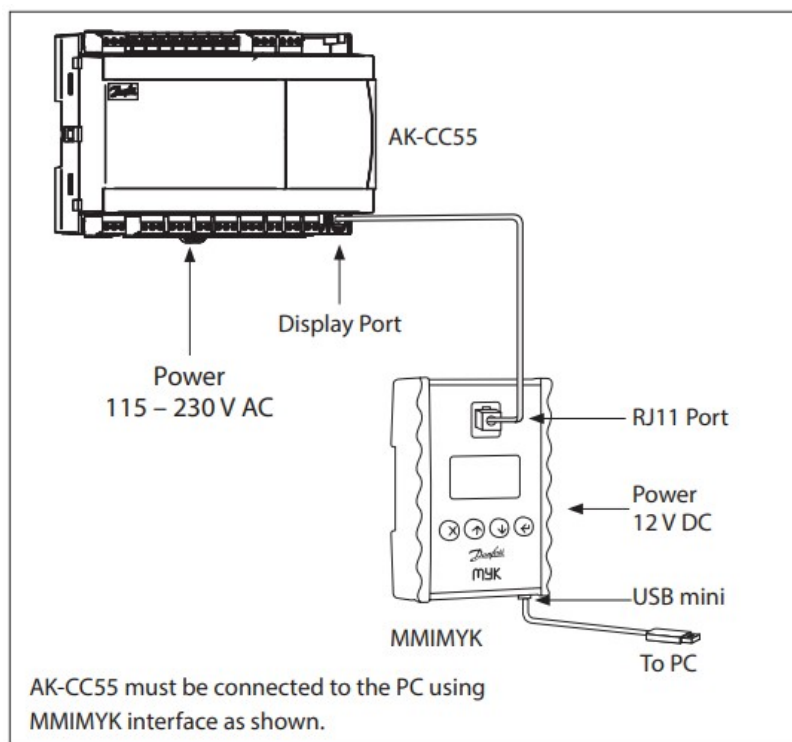


Fig 5: Connection for EKF1A/2A using KoolKey as a Gateway.

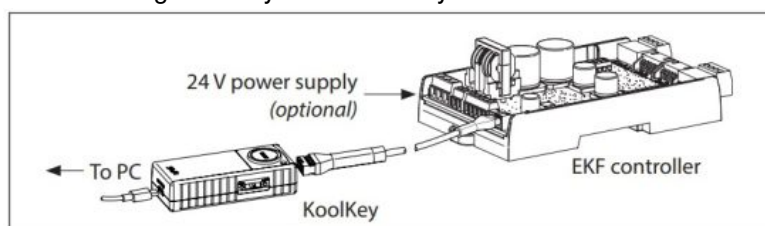


Fig 6: Connection for EKF 22x using KoolKey as Gateway

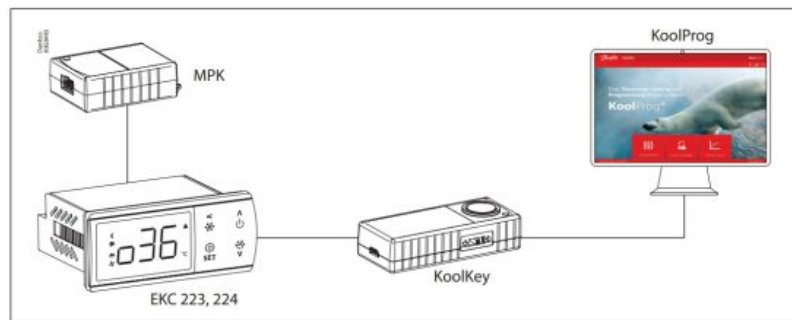
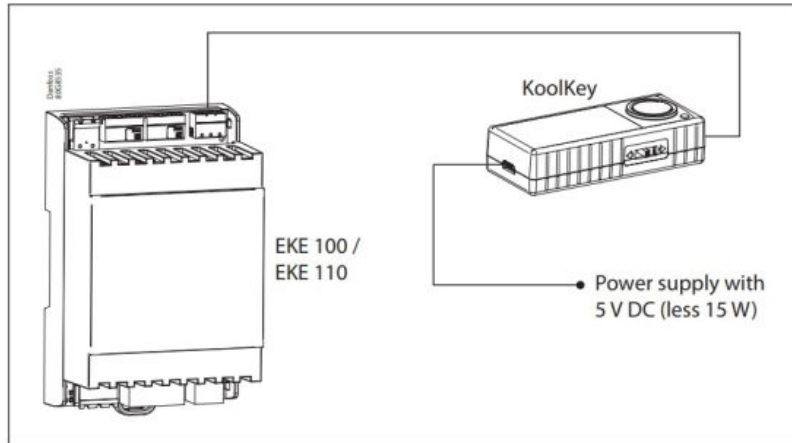


Fig 7: Connection for EKE 100/EKE 110 using KoolKey as Gateway

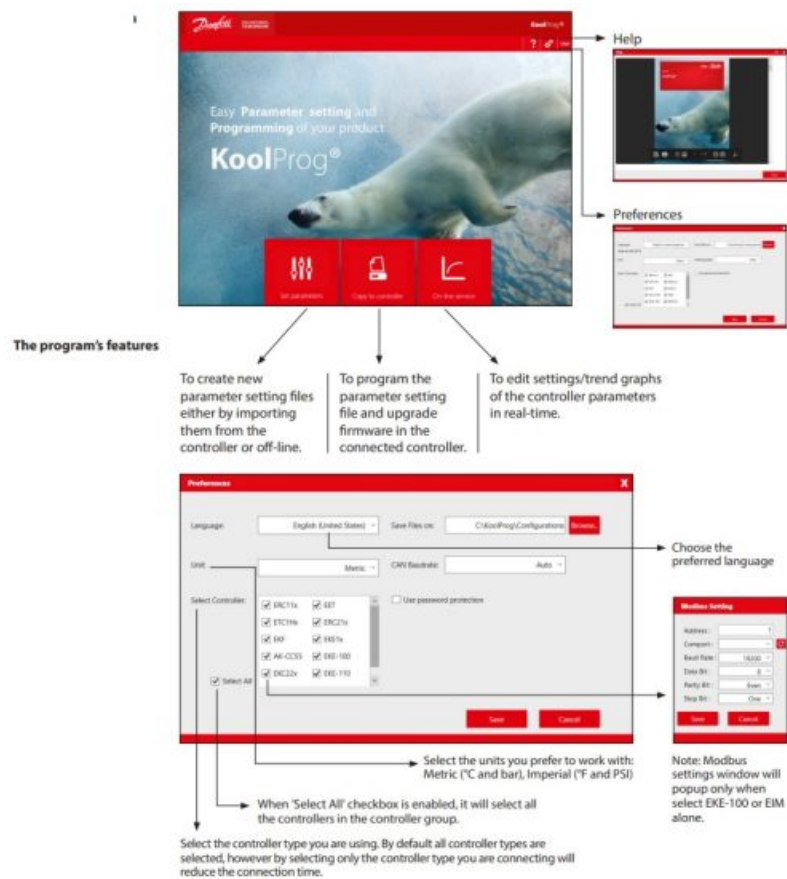


Starting the program

Double click on the desktop icon to launch the KoolProg application.



The program's features



Accessibility

Users with a password have access to all features.

Change user X

User: Admin

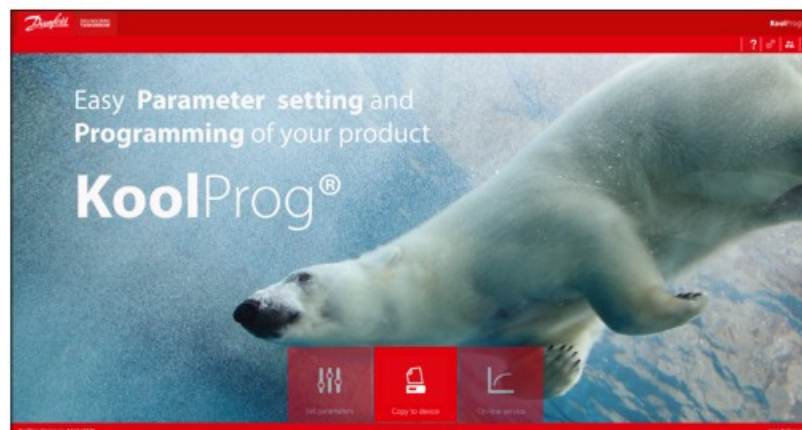
Password: *****

* Username and password are case sensitive

☐ Show password

OK Cancel

Users without a password have limited access and may only be able to use the 'Copy to controller' feature.



Set parameters



This feature allows you to configure parameter settings for your application.

Click one of the icons in the right column to either create a fresh configuration off-line, to import settings from a connected controller or to open an already saved project.

You can see projects you have already created under “Open a recent setting file”.

New

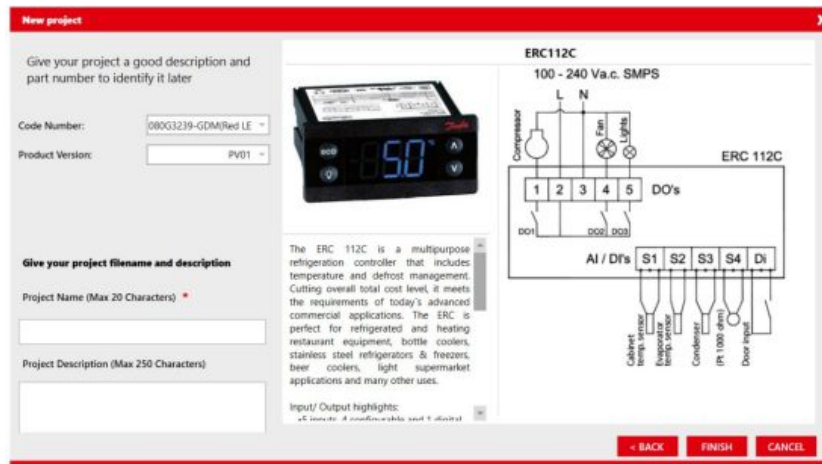


Create a new project by selecting:

- Controller type
- Part number (code number)
- PV (product version) number
- SW (software) version

Once you have selected a file, you need to name the project.

Click ‘Finish’ to proceed to view and set parameters.

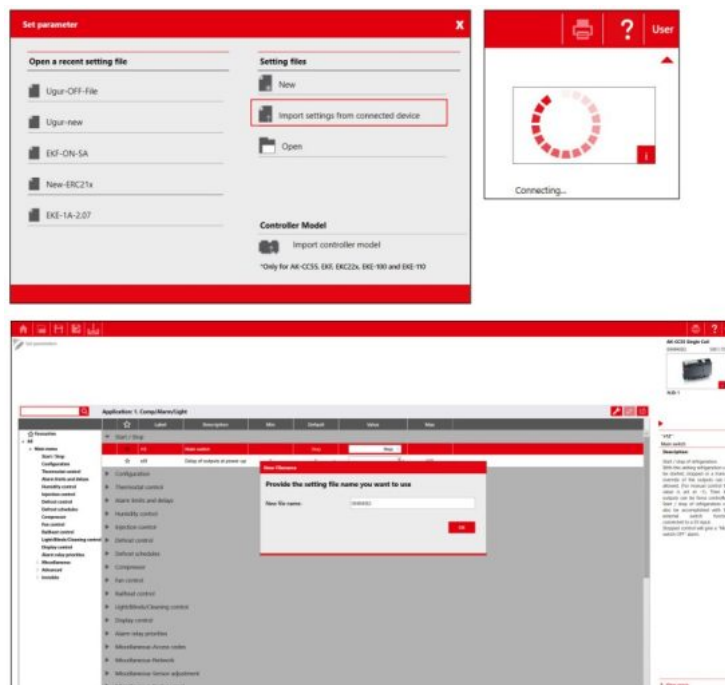


Note: Only standard code numbers are available to choose from in the “Code Number” field. To work off-line with a non-standard code number (customer specific code number), use one of the following two methods:

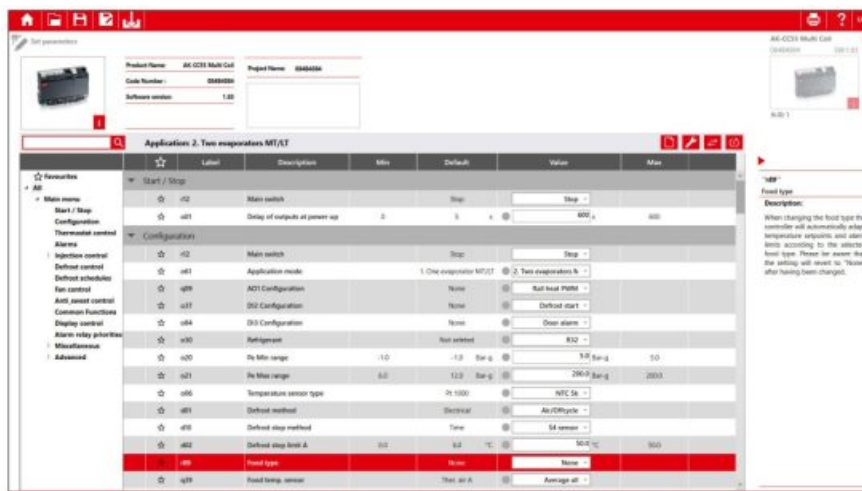
1. Connect the controller of same code number with KoolProg using Gateway, and use “Import settings from Controller” to create a configuration file from it.
Use “Open” feature to open an existing locally saved file on your PC of same code number and create a new file from it.
The new file, saved on your PC locally, can be accessed offline in future without having to connect the controller.


Import settings from controller

Allows you to import a configuration from a connected controller to KoolProg and to modify the parameters offline. Select “Import settings from controller” to import all parameters and the details from the connected controller to the PC.

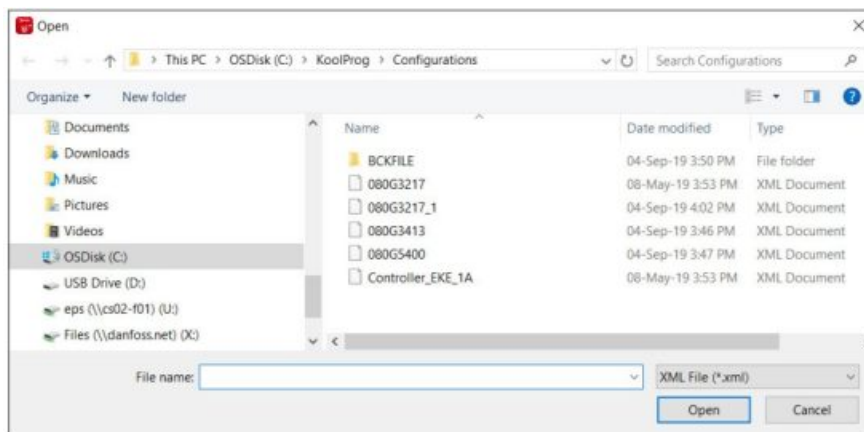


After “Import completed”, save the imported setting file by providing the file name in the pop-up message box.




Now the parameter settings can be worked upon offline and can be written back to the controller by pressing “Export” . While working offline, the connected controller is shown grayed out and changed parameter values are not written to the controller until the export button is pressed.

Open 





The “Open” command lets you open setting files already saved to the computer. Once the command is clicked, a window will appear with a list of saved setting files.

All projects are stored here in the folder: “KoolProg/Configurations” by default. You can change the default file saving location in “Preferences” .


You can also open the setting files you have received from another source and saved in any folder using the browse option. Please note that KoolProg supports multiple file formats (xml, cbk) for different controllers. select the appropriate setting file format of the controller you are using.

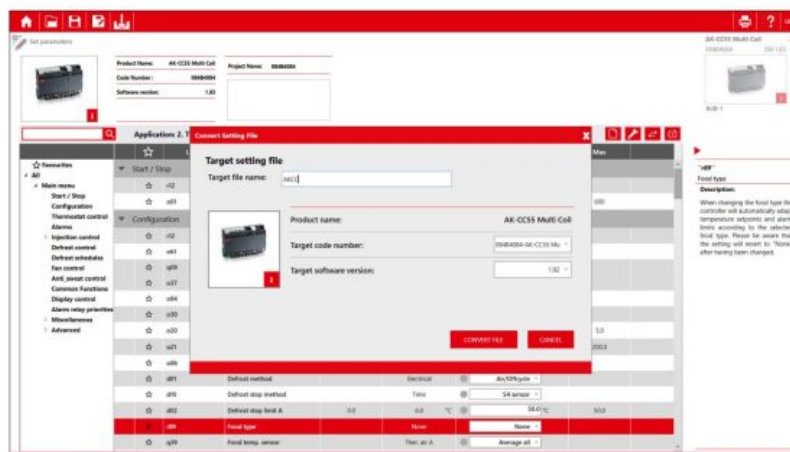
Note: the .erc/.dpf format files of the ERC/ETC controller are not visible here. An .erc or .dpf file saved on your PC can be opened in one of the following ways:

1. Select “New Project” and go all the way to the Parameter list view of the same controller model. Select the Open button to browse and open the .erc/.dpf file on your PC.
2. Select “Upload from controller” if you are connected to the same controller on-line and go to the parameter list view. Select Open  button KoolProg. to browse the desired .erc/.dpf file and view it in
3. Select “Open” to open any other .xml file of the same controller, reach the parameter list view screen, and there select the Open  button to browse and select the .erc/.dpf file to view and edit these files.

Import controller model (only for AK-CC55, EKF, EKC 22x, EKE 100 and EKE 110):

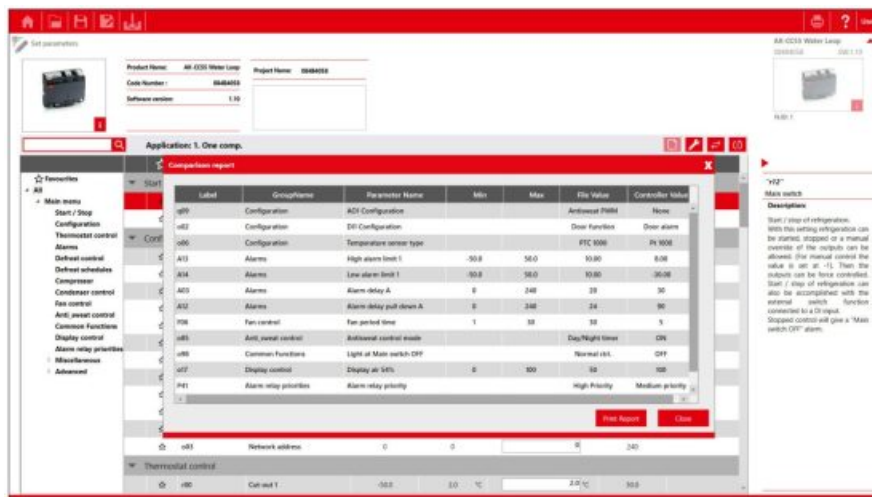
This allows you to import the controller model (.cdf) offline and generate a database in KoolProg. This will allow you to create a setting file offline without having the controller connected to KoolProg. KoolProg can import the controller model (.cdf) saved to the PC or any storage device.

1. Open the setting file which needs to be converted in KoolProg under “Set parameter”.
2. Click on convert setting 
3. Select the project name, code number and SW version / Product version of the setting file that needs to be generated and click OK.
4. A pop-up message with summary of conversion will be displayed at the end of conversion.
5. Converted file is displayed on the screen. Any parameters with orange dot indicates that the value of that parameter is not copied from the source file. It is suggested to review those parameters and make the necessary changes before closing the file, if required.

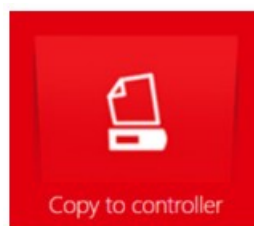


Comparison settings (Applicable for all controllers except ETC1Hx):

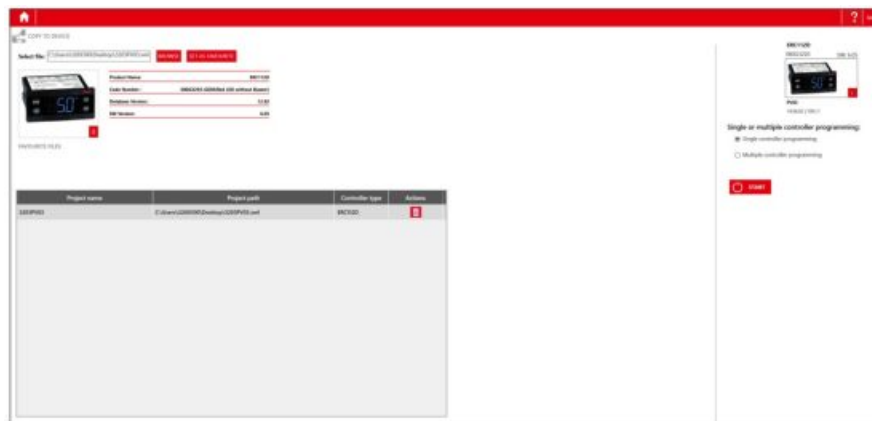
1. Comparison settings feature is supported in both Online service window and Project window but it works slightly different in the both these windows.
2. It enables the user to generate a report when the value of parameter in controller does not match with value of the same parameter in project window. This assists the user in checking the value of a parameter in the controller sans navigating to the online service window.
3. In online service window, comparison report will be generated when the value of a parameter does not match with the default value of the same parameter. This allows the user to see the list of parameters with non default value in one single click.
4. In Set parameter window, if controller and project window file's value are same. It will show the pop-up with message: “The project file has no changes compared with the controller settings file”. If it has any distinct value between controller and project window file's value it will show report like below image.
5. Same way in online window, if controller value and controller's default having the same value. It will show the pop-up with message: “The default values and controller values are identical”. If it has any distinct value, it will show report with the values.



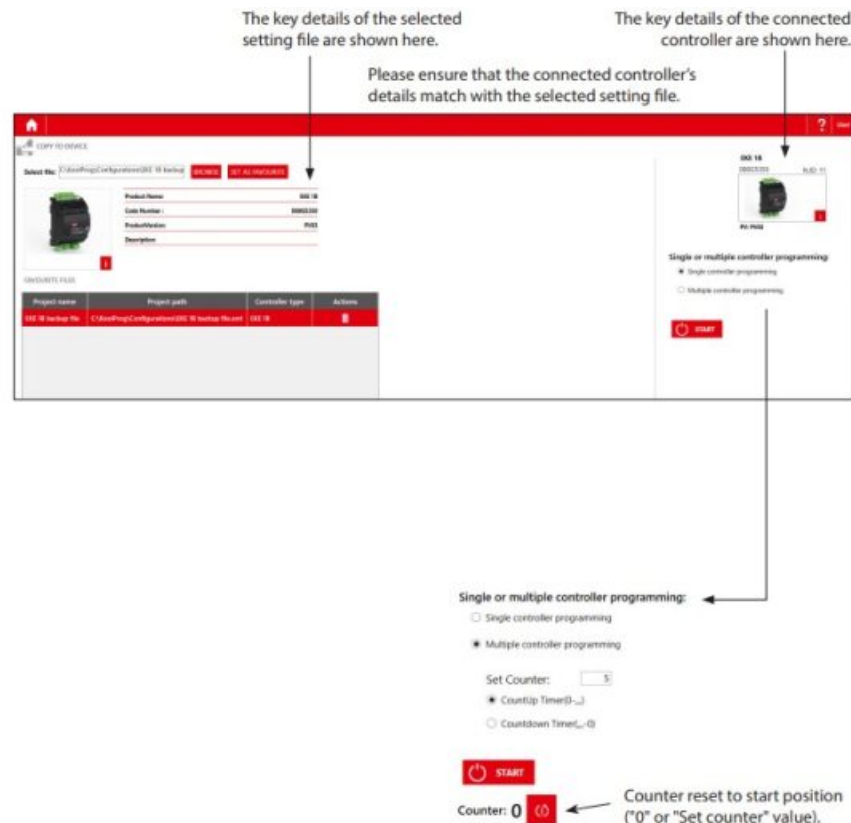
Copy to device



Here you can copy the setting files to the connected controller as well as upgrade the controller firmware. The firmware upgrade feature is only available for the selected controller model.



Copy the setting files: Select the setting file you want to program with the “BROWSE” command. You can save a setting file in “Favorite Files” by clicking on the “Set as Favourite” button. The project will be added to the list and can be easily accessed later. (Click on the trash icon to remove a project from the list). Once you have selected a setting file, the key details of the selected file are displayed.



If the project file and the connected controller match, data from the project file will be transmitted to the controller when you click the “START” button.

The program checks whether data can be transmitted.

If not, a warning message pops up.

Multiple Controller Programming

If you want to program multiple controllers with the same settings, use “Multiple Controller Programming.

Set the number of controllers to be programmed, connect the controller and click “START” to program the file – wait for the data to be transferred.

Connect the next controller and click “START” again.

Firmware upgrade (only for AK-CC55 and EETa):

1. Browse the firmware file (Bin file) you want to program – selected firmware file details are displayed on the left hand side.
2. If the selected firmware file is compatible with the connected controller, KoolProg enables the start button and will update the firmware. If it is not compatible, the start button remains disabled.
3. After a successful firmware update, the controller restarts and displays the updated details of the controller.
4. This feature can be fully protected by a password. If KoolProg is password protected, then when you browse the firmware file, KoolProg prompts for the password and you can only load the firmware file after entering the correct password.



Online service



This allows you to monitor the real-time operation of the controller while it is running.

- You can monitor inputs and outputs.
- You can display a line chart based on parameters you have selected.
- You can configure settings directly in the controller.
- You can store line charts and settings and then analyze them.

Open
Allows you to view prior line charts you have made from collected data.

Save as
Allows you to save a project file containing all the controller's settings.

Arrow Up/Down
Clicking the arrow allows you to hide the photo and the top block of information, so that more space is available on screen for parameter views. Clicking the arrow again makes it re-appear.

The Trend Feature
If you want to chart the trend for a measurement, you can select what you want to view from this table. Tick the box of any parameter you would like to include in the chart. You can select a maximum of 10 parameters.

Compare settings feature
Allows you to compare default value and value of the same parameter in controller.

Line Chart
Click the "Line Chart" button to switch over to the trend view. You can begin charting any measurements you want in the trend view.

Alarms (only for AK-CC55):

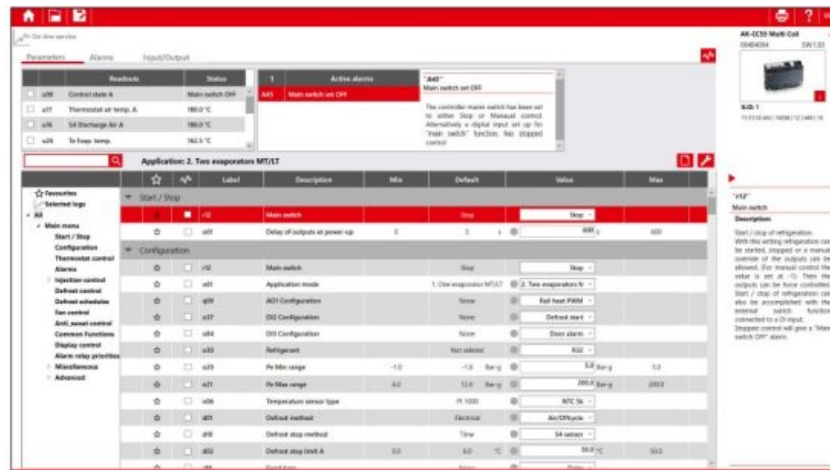
Under the "Alarms" tab, the user can view the active and historical alarms present in the controller with a time stamp.

Note: a saved setting file created in this way cannot be re-opened in KoolProg.

Fig 9: Unknown controller connection under “Import settings from connected device”:



Fig 10: Unknown controller connection under “On-line service”:



Please contact your nearest sales representative for further assistance.

Danfoss A/S

Climate Solutions danfoss.com +45 7488 2222

Any information, including, but not limited to information on selection of product, its application or use, product design, weight, dimensions, capacity or any other technical data in product manuals, catalogues descriptions, advertisements, etc, and whether made available in writing, orally, electronically, online or via download, shall be considered informative, and is only binding if and to the extent, explicit reference is made in a quotation or order confirmation. Danfoss cannot accept any responsibility for possible errors in catalogues, brochures, videos and other material. Danfoss reserves the right to alter its products without notice. This also applies to products ordered but not delivered provided that such alterations can be made without changes to form, fit or function of the product. All trademarks in this material are property of Danfoss A/S or Danfoss group companies. Danfoss and the Danfoss logo are trademarks of Danfoss A/S. All rights reserved.

Danfoss | Climate Solutions |

2025.03

BC227786440099en-001201 | 20

ADAP-KOOL



Documents / Resources



[Danfoss ETC 1H KoolProg Software](#) [pdf] User Guide
ETC 1H, ETC 1H KoolProg Software, KoolProg Software, Software

References

- **[User Manual](#)**

Manuals+, Privacy Policy

This website is an independent publication and is neither affiliated with nor endorsed by any of the trademark owners. The "Bluetooth®" word mark and logos are registered trademarks owned by Bluetooth SIG, Inc. The "Wi-Fi®" word mark and logos are registered trademarks owned by the Wi-Fi Alliance. Any use of these marks on this website does not imply any affiliation with or endorsement.