

Danfoss
**ESM-10 Room
Sensor**



Danfoss ESM-10 Room Sensor Instruction Manual

[Home](#) » [Danfoss](#) » Danfoss ESM-10 Room Sensor Instruction Manual 

Contents

- [1 Danfoss ESM-10 Room Sensor](#)
- [2 Installation Steps](#)
- [3 Wiring Instructions](#)
- [4 Specifications](#)
- [5 DIMENSION](#)
- [6 Graph](#)
- [7 FAQs](#)
- [8 Documents / Resources](#)
 - [8.1 References](#)

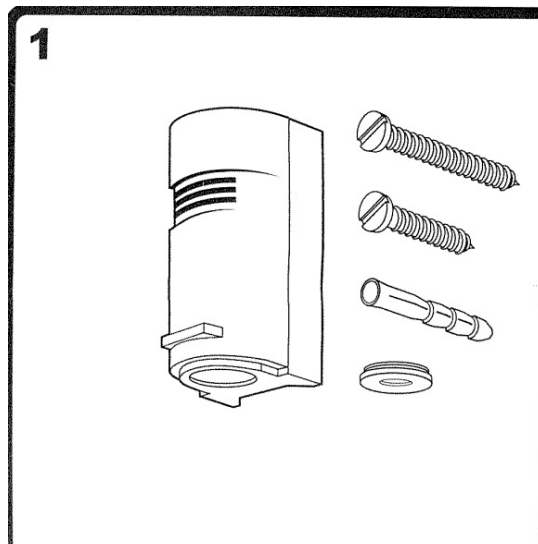
Danfoss

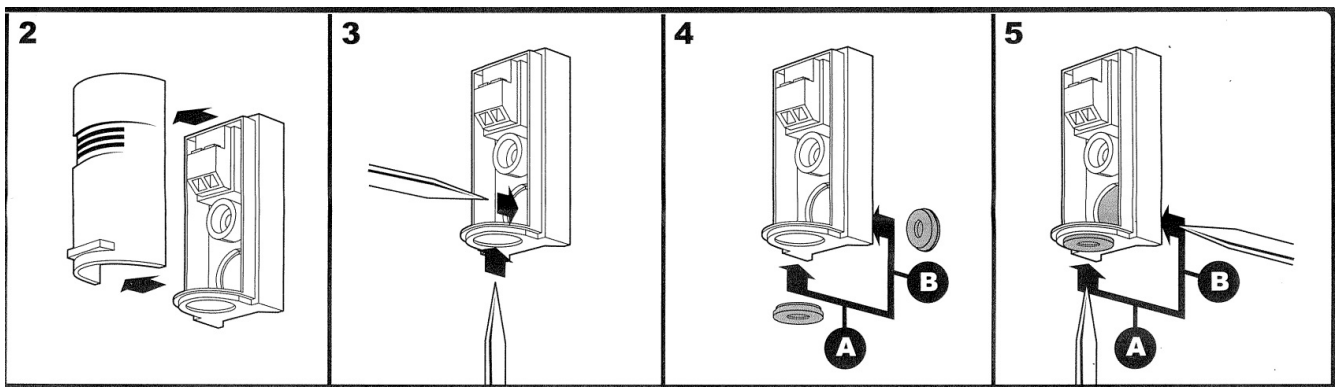
Danfoss ESM-10 Room Sensor



Installation Steps

1. Remove the cover of the sensor by unscrewing the screws.
2. Open the sensor casing by sliding it apart.
3. Insert the wiring through the bottom of the sensor casing.
4. Connect the wires to the terminals inside the sensor. Ensure correct polarity.
5. Reattach the cover and secure it with screws.





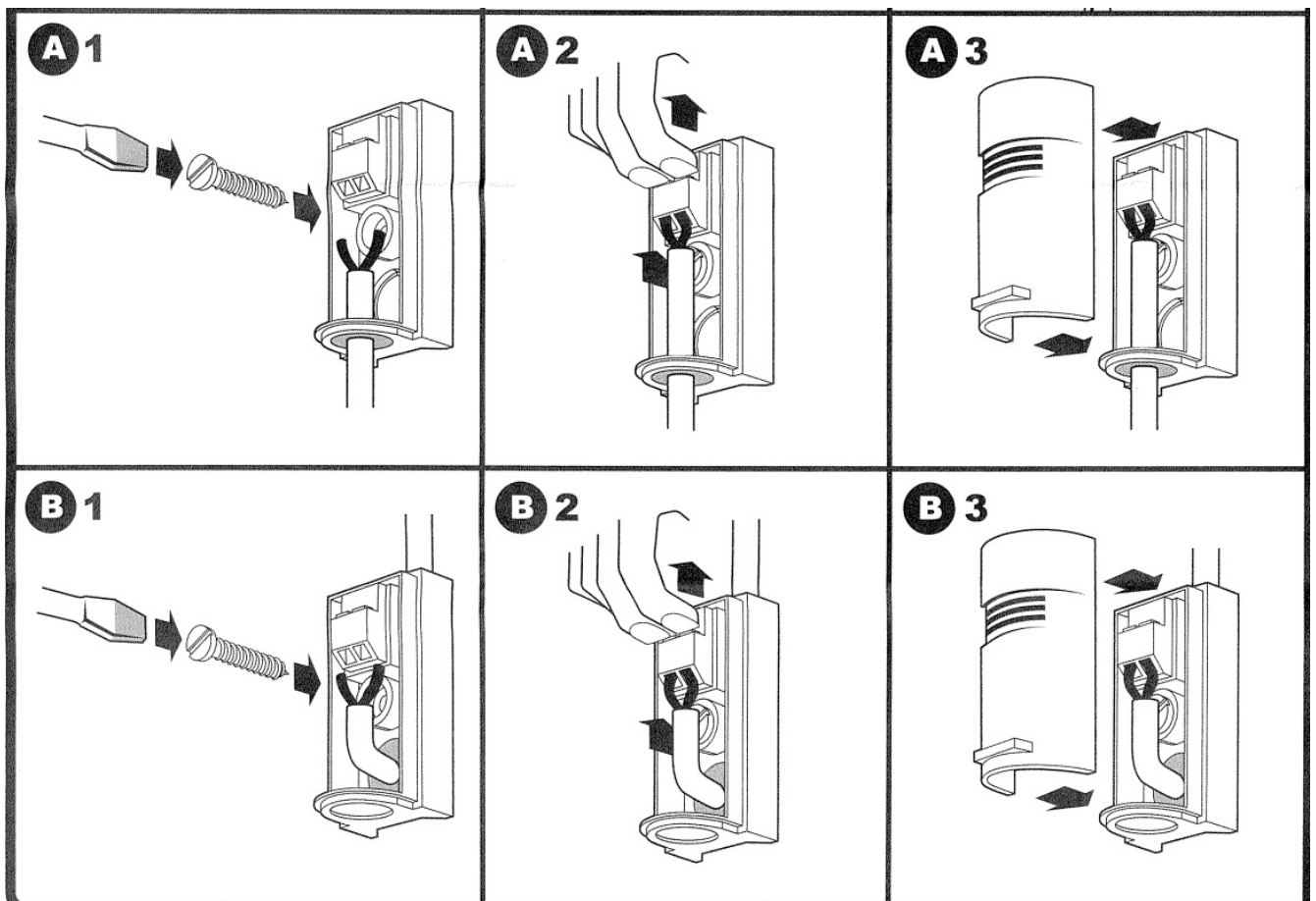
Wiring Instructions

Option A

1. Insert the wire through the opening and connect to the terminal.
2. Ensure the wires are properly secured and insulated.
3. Close the sensor casing and secure it.

Option B

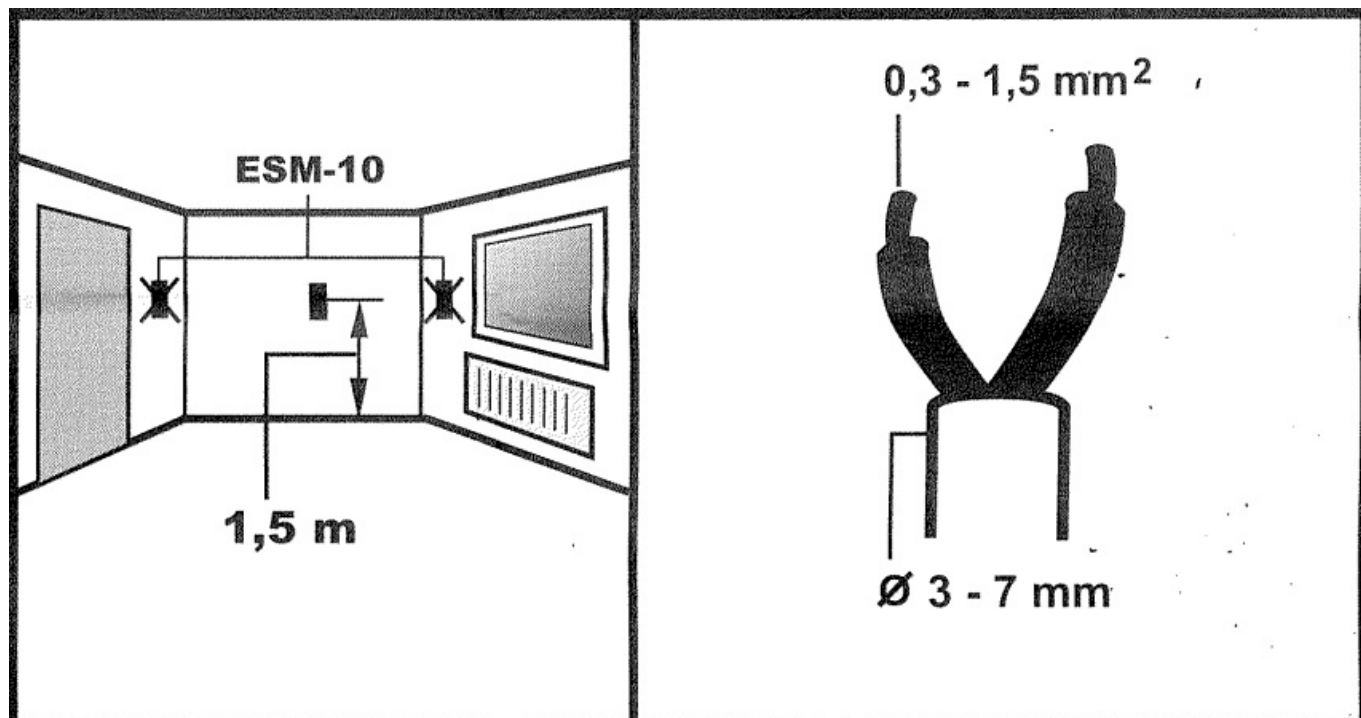
1. Insert the wire through the opening and connect to the terminal.
2. Ensure the wires are properly secured and insulated.
3. Close the sensor casing and secure it.



Specifications

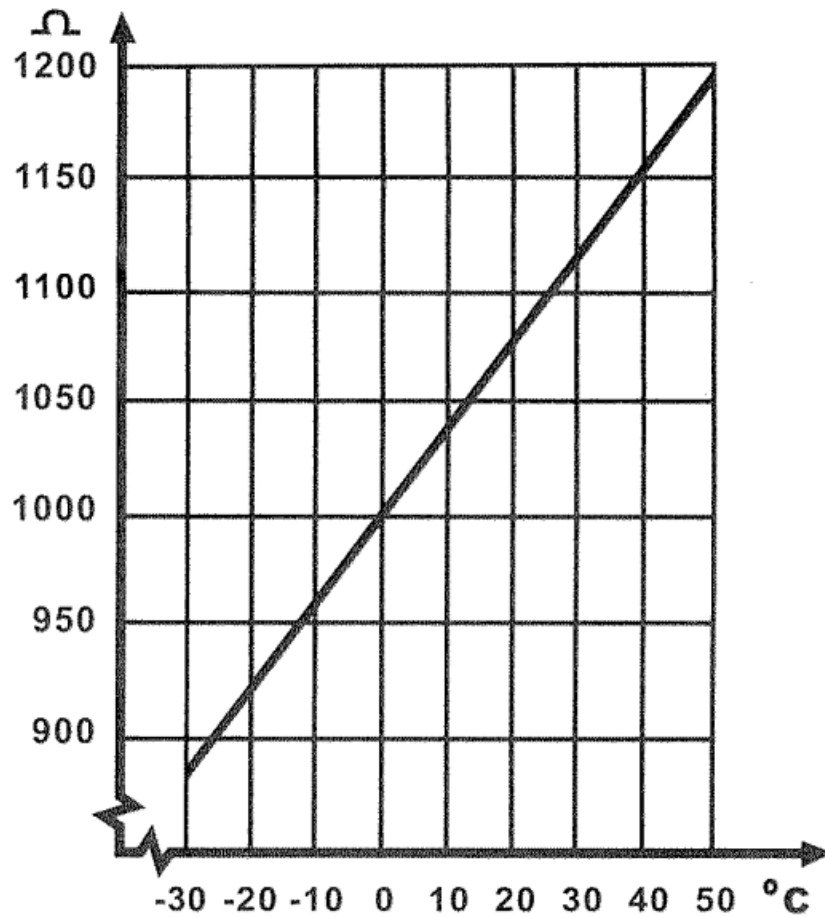
Distance from Floor	1.5 meters
Wire Size	0.3 – 1.5 mm ²
Cable Diameter	3 – 7 mm

DIMENSION



Graph

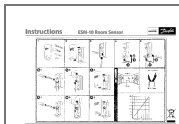
The graph shows the resistance (Ω) versus temperature ($^{\circ}\text{C}$). The resistance increases linearly from 900 Ω at -30 $^{\circ}\text{C}$ to 1200 Ω at 50 $^{\circ}\text{C}$.



FAQs

- **What is the recommended installation height for the sensor?**
 - The sensor should be installed at a height of 1.5 meters from the floor.
- **What wire size is compatible with the ESM-10 Room Sensor?**
 - The compatible wire size ranges from 0.3 to 1.5 mm².
- **What is the acceptable cable diameter for installation?**
 - The cable diameter should be between 3 and 7 mm.

Documents / Resources



[Danfoss ESM-10 Room Sensor](#) [pdf] Instruction Manual
SMDT, DK, ESM-10 Room Sensor, ESM-10, Room Sensor, Sensor

References

- [User Manual](#)

[Manuals+](#). [Privacy Policy](#)

This website is an independent publication and is neither affiliated with nor endorsed by any of the trademark owners. The "Bluetooth®" word mark and logos are registered trademarks owned by Bluetooth SIG, Inc. The "Wi-Fi®" word mark and logos are registered trademarks owned by the Wi-Fi Alliance. Any use of these marks on this website does not imply any affiliation with or endorsement.