

*Danfoss*

# EKE 1P Valve Extension Module



## Danfoss EKE 1P Valve Extension Module Installation Guide

[Home](#) » [Danfoss](#) » Danfoss EKE 1P Valve Extension Module Installation Guide 

### Contents

- [1 Danfoss EKE 1P Valve Extension Module](#)
- [2 Specifications](#)
- [3 FAQs](#)
- [4 Description](#)
- [5 PRODUCT USING STEPS](#)
- [6 CONTACT INFORMATION](#)
- [7 Documents / Resources](#)
  - [7.1 References](#)
- [8 Related Posts](#)

*Danfoss*

**Danfoss EKE 1P Valve Extension Module**



## Specifications

- **Product Name:** EKE 1P
- **Model Number:** 080G0325
- **Software Version:** 2.14 and older
- **Recommended Software Update:** 2.15 or newer
- **Compatibility:** AK-PC 572 with standard Danfoss valves

## FAQs

- **Q: What should I do if my EKE 1P resets after 32,000 hours of operation?**
  - **A:** To resolve this issue, update the controller software to version 2.15 or newer as recommended.
- **Q: How do I configure EKE 1P for custom applications?**
  - **A:** Follow the backup procedure using the MMIGRS2 display mentioned in the user manual to back up settings before updating the controller.

## Description


- We have identified an unfortunate design parameter in the EKE 1P software version 2.14 and older that under certain circumstances, can cause the product to reset its configuration to factory defaults after 32,000 hours of operation, followed by a power off. Upon such reset, the most likely outcome is that an alarm is triggered calling for action, and the controlled valve will not work.
- After being factory reset, the controller can be reconfigured and will be fully functional again.
- To rectify the issue, we recommend updating the controller software to 2.15 or newer.
- **Note:** By default, EKE 1P from the box is ready to be used as an extension module for AK-PC 572 with standard Danfoss valves. With this application, EKE 1P requires only wiring on AI4 to select controller mode (high pressure or receiver valve) and select one of Danfoss's standard valves from the AK-PC 572 menu. All other settings in the EKE 1P remain default.
- In this case, no further actions are needed. After 32000 hours of operation and power off, settings will be reset.

But after the power on and initialization procedure, EKE 1P will be assigned with mode from AI4 and AK-PC 572 will write the Danfoss valve type set in the controller before. So EKE 1P settings will resume their work and continue to operate as before.

- If EKE 1P is used for another purpose e.g. as a driver for AK-CC55 Single Coil or with user-defined valves, please follow the procedure below.

## PRODUCT USING STEPS

### Step 1: Backup of settings using the MMIGRS2 display

- **Important:** Make a backup of all relevant settings before updating controller!
- Disconnect the phone cable (code number 080G0075) for the RJ11 CAN port on EKE 1P if any is connected.
- Connect the MMIGRS2 display (code number 080G0294) to the RJ11 CAN port on EKE 1P (it can take about 2 minutes).
- Connect termination loop between H and R on both Display and EKE driver (it takes about 3 minutes).
- When the display is connected the display should read "Data" while the "wheel" is spinning.
- When data is uploaded the settings can be accessed by pushing the enter button and holding it down for a few seconds. The display will probably ask for the Password which is 300 (Supervisor) by default.
- **If the display is not connecting, try this approach:**
  1. Hold the Enter button (  ) and X button (X) down on the MMIGRS2 display for 5 seconds allowing the BIOS main menu to emerge (the software version of the display is shown briefly) (press X to see the software version again if needed).
  2. Choose the menu "MCX selection"
    - a. choose the line "Clear UI" and push Enter
    - b. choose the line "AutoDetect" and push Enter
  3. Choose the menu "COM selection"
    - c. choose the line "CAN" and push Enter
  4. Choose the menu "Start-up mode"
    - d. choose the line "Remote application" and push Enter
  5. Choose the menu "CAN"
    - e. choose the line "Baudrate" and choose the setting "Autobaud" and push Enter
    - f. choose the line "Node ID" and set the value to "126" and push Enter
    - g. choose the line "Active Nodes" where active nodes can be seen on the screen – the screen is updated every 2 seconds ("1" is the controller and "L" is the display address)
  6. Go back to the main menu via the Escape button (push twice).
  7. Choose the menu "Application" and push Enter.
  8. Now the display will start a new upload from the controller. This process will take approximately 5 minutes. (It takes about 3 minutes to check the settings and 5 minutes to upload).

In the EKE 1P menu press the "Enter" button for approximately 3 seconds to access the setting menu. Access via a supervisor password might be required. The default password is "300".

**Make a note of settings in the menu consisting of:**

- **Start/Stop**

- Main switch

- **Device config**

- Mode
- AI valve input scale (only available if Mode=AI Valve)
- AI 0% OD (only available if AI valve input scale=User def.)
- AK 100% OD (only available if AI valve input scale=User def.)

- **1/0**

- **Output**

- Relay control (only available if Mode=AI Valve)

- **Configure**

- DI1 Active at
- DI2 Active at

- **Alarm config.**

- Battery alarm

- **Valve config.**


- Valve configuration
- Valve fallback OD
- Valve motor type (only available when Valve configuration=UserDef)
- Valve drive current (only available when Valve configuration=UserDef)
- Valve step positioning (only available when Valve configuration=UserDef)
- Valve total steps (only available when Valve configuration=UserDef)
- Valve speed (only available when Valve configuration=UserDef)
- Valve start speed (only available when Valve configuration=UserDef)
- Valve emergency speed (only available when Valve configuration=UserDef)
- Valve acceleration current (only available when Valve configuration=UserDef)
- Valve acceleration time (only available when Valve configuration=UserDef)
- Valve holding current (only available when Valve configuration=UserDef)
- Valve step mode (only available when Valve configuration=UserDef)
- Valve duty cycle (only available when Valve configuration=UserDef)
- Valve OD during a stop
- Start backlash (only available when Valve configuration=UserDef)
- Compensation backlash (only available when Valve configuration=UserDef)
- Overdrive
- Overdrive enable OD
- Overdrive block time
- Valve excitation time after stop (only available when Valve configuration=UserDef)
- Valve neutral zone

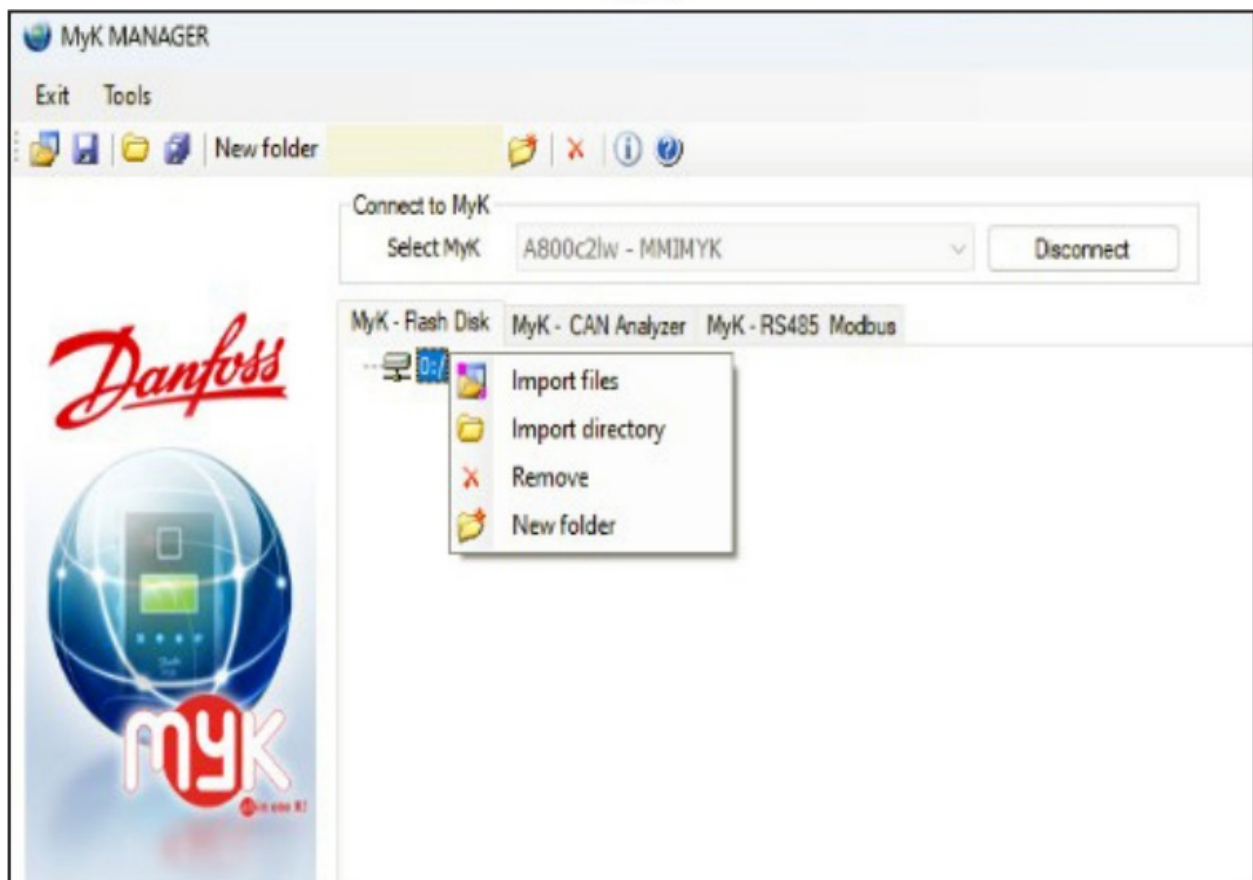
- **Communication**

- Controller adr.
- Can baudrate
- Below there is an example of settings from the EKE 1P used as valve driver for an AK-CC55 Single Coil.
- We have made notes of the settings in the menu:

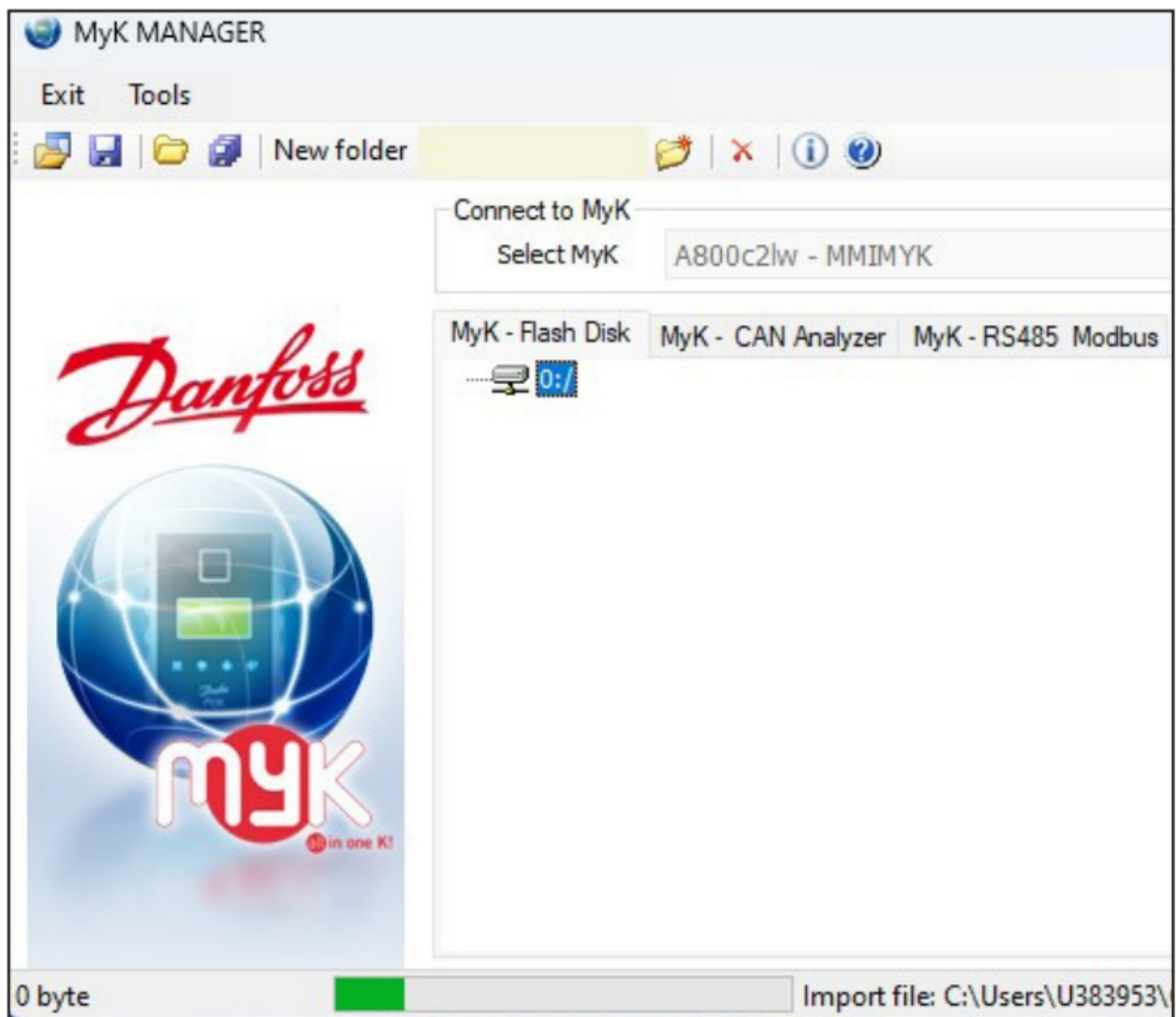
- **Start/Stop**
  - Main switch ON
- **Device config**
  - Mode AI valve
  - AI valve input scale 0 –10 V
- **System**
  - Password 100, 200, 300
- **I/O**
  - **Output**
    - Relay control Auto
  - **Configure**
    - DI1 Active at On
    - DI2 Active at On
- **Alarm config.**
  - Battery alarm EKE2U
- **Valve config.**
  - Valve configuration CCMT-3L
  - Valve fallback OD 0 %
  - Valve OD during stop 0 %
  - Overdrive 5,0 %
  - Overdrive enables OD 0 %
  - Overdrive block time 0 min
  - Valve neutral zone 0,5 %
- **Communication**
  - Controller adr. 1
  - Can baud rate 50 k
  - (This registration takes about 6 minutes.)

## **Step 2:** Update Firmware of EKE 1P with new version

1. Get your MYK programmer ready, if you don't have one please contact your normal sales channel. Search for a Programming key, MMIMYK, 080G0073. For more information please refer to this site: [Danfoss Global Product Store](#).
2. Install MYK Manager software.
3. Connect the MYK to your PC's USB-A port with a USB-A MINI USB cable, and use a telephone cable to connect the MYK to the EKE 1P, you will need a RJ11 RJ11 cable. If there is a CAN connection with AK-PC 572 and another EKE 1P controller, disconnect the controller you are trying to update from that network and make sure it's connected only to MYK (one-to-one) with RJ11 cable.
4. Start  the MYK software, press "Connect" right-click on your drive name and choose "Import directory".



5. Choose the folder with the update from your PC (there should be 2 files in that folder app.pk and mmimyk.cfg).



6. The green bar at the bottom of the windows shows the process of the files moving from the PC to the MYK. Make sure files were uploaded to MYK
7. You are ready to update the EKE 1P. Make sure that you connected everything the right way, hold the MYK, and log into the CAN SETTINGS.



8. From the CAN SETTINGS choose ACTIVE NODES.
9. Here you will see a map of the connected devices, The L represents the MYK and 1 is the EKE, if you see only one of them then something is wrong (check cable, CAN addresses, and CAN speed on both). In the two photos below you can see how controllers with CAN address 1 and with CAN address 96 can be identified:



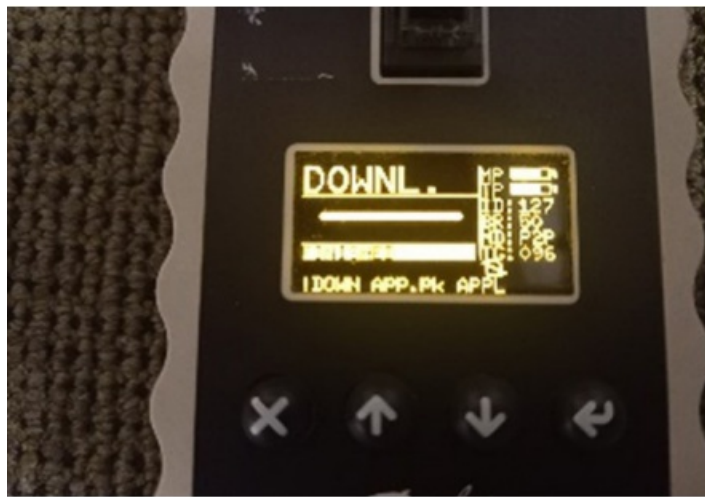


10. To start the programming process, go back to the main menu of the MYK (click 2 times on the X bottom) and choose PROGRAM.
11. Go down to TARGET SEL. And choose PEER2PEER.
12. After choosing the protocol you will be set back to the program menu, from here choose DOWNLOAD X:/ "folder name of the update" and push Enter.
13. And in the next menu choose ALL and push Enter, now the program process will start (the bar in the middle shows the programming process).

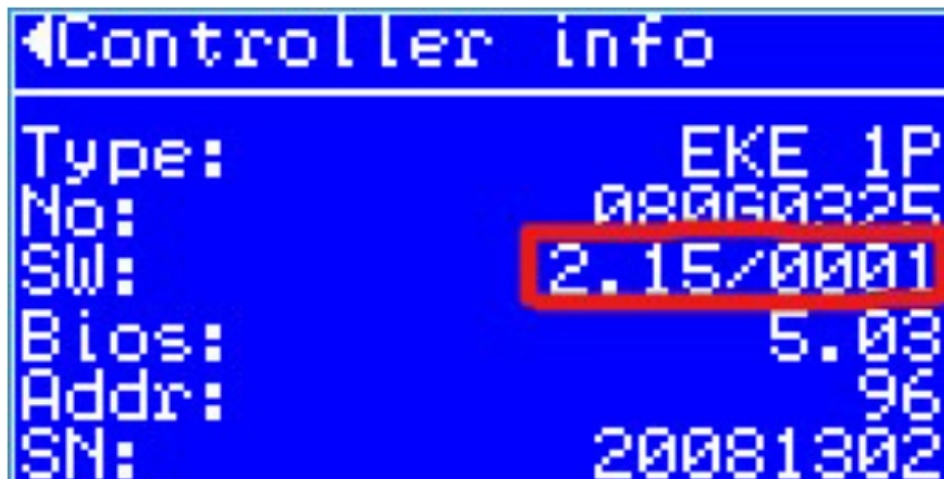


14. When the bar is full, you will get a FINISHED message, now you are done.





15. To check the SW version, connect the MMIGRS2 display to the controller and go to the controller info screen.



**Step 3:** Restore backup of settings using the MMIGRS2 display

- Use the noted data from the backup to program the EKE 1P again using the MMIGRS2 display.

**Step 4:** Start EKE 1P

- The Main switch will have to be set to "ON". Please check this!

**Step 5:** Important

- When the Firmware has been updated the EKE 1P module must be registered and marked with new software version 2.15 e.g. "SW2.15". in this way we can all see that the module has been updated and considered to be OK!


## CONTACT INFORMATION

- Danfoss A/S
- Climate Solutions
- [danfoss.com](http://danfoss.com).
- +45 7488 2222

Any information, including, but not limited to information on the selection of the product, its application or use,

product design, weight, dimensions, capacity, or any other technical data in product manuals, catalog descriptions, advertisements, etc., and whether made available in writing, orally, electronically, online or via download, shall be considered informative and is only binding if and to the extent, explicit reference is made in a quotation or order confirmation. Danfoss cannot accept any responsibility for possible errors in catalogs, brochures, videos, and other material. Danfoss reserves the right to alter its products without notice. This also applies to products ordered but not delivered provided that such alterations can be made without changes to the form, fit, or function of the product. All trademarks in this material are property of Danfoss A/S or Danfoss group companies. Danfoss and the Danfoss logo are trademarks of Danfoss A/S. All rights reserved. © Danfoss | Climate Solutions| 2024.08

Documents / Resources

	<p><a href="#">Danfoss EKE 1P Valve Extension Module</a> [pdf] Installation Guide</p> <p>EKE 1P, EKE 1P Valve Extension Module, Valve Extension Module, Extension Module, Module</p>
---	--

References

- [User Manual](#)

[Manuals+](#), [Privacy Policy](#)

This website is an independent publication and is neither affiliated with nor endorsed by any of the trademark owners. The "Bluetooth®" word mark and logos are registered trademarks owned by Bluetooth SIG, Inc. The "Wi-Fi®" word mark and logos are registered trademarks owned by the Wi-Fi Alliance. Any use of these marks on this website does not imply any affiliation with or endorsement.