



Danfoss ECL 296 Home Automation System Temperature Controller Installation Guide

[Home](#) » [Danfoss](#) » Danfoss ECL 296 Home Automation System Temperature Controller Installation Guide 

Contents

- [1 Danfoss ECL 296 Home Automation System Temperature Controller](#)
- [2 Product Information](#)
- [3 Product Usage Instructions](#)
- [4 \(FAQ\)](#)
- [5 Documents / Resources](#)
 - [5.1 References](#)
- [6 Related Posts](#)



Danfoss ECL 296 Home Automation System Temperature Controller



Product Information

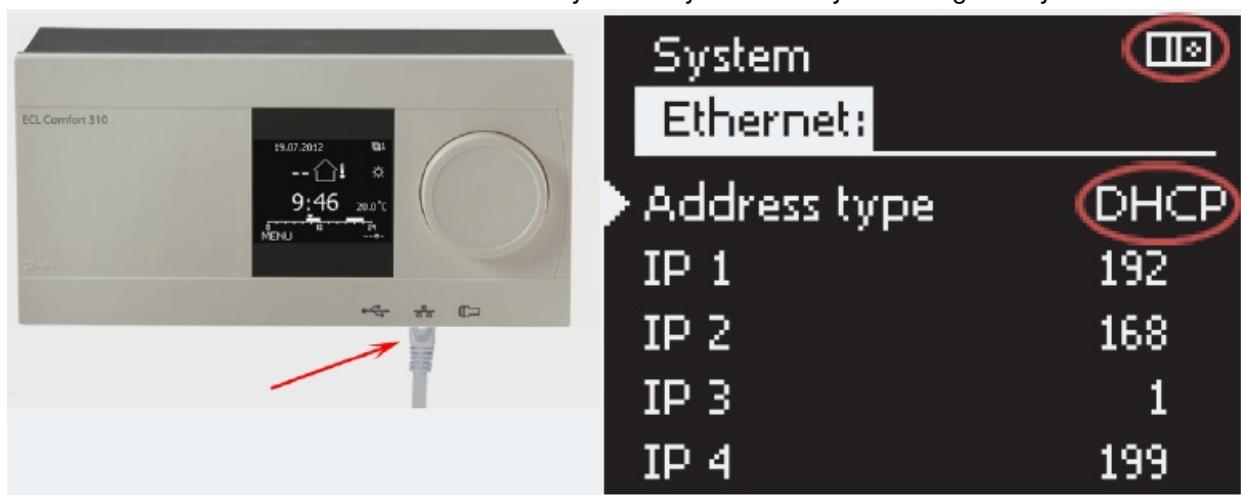
Specifications

- **Product Name:** ECL Comfort 296 / 310
- **Manufacturer:** Danfoss
- **Connectivity:** Ethernet
- **Control:** Remote control and monitoring

Product Usage Instructions

Connect the ECL 296 / 310 to the Internet

The ECL Comfort 296 / 310 must be connected to the Internet via an Ethernet cable to the Internet gateway. Check that the Ethernet settings on the controller match the network to which it is connected. Settings can be found under Menu->System-> Ethernet*
Confirm whether the IP address has to be static or dynamically obtained by Internet gateway DHCP.



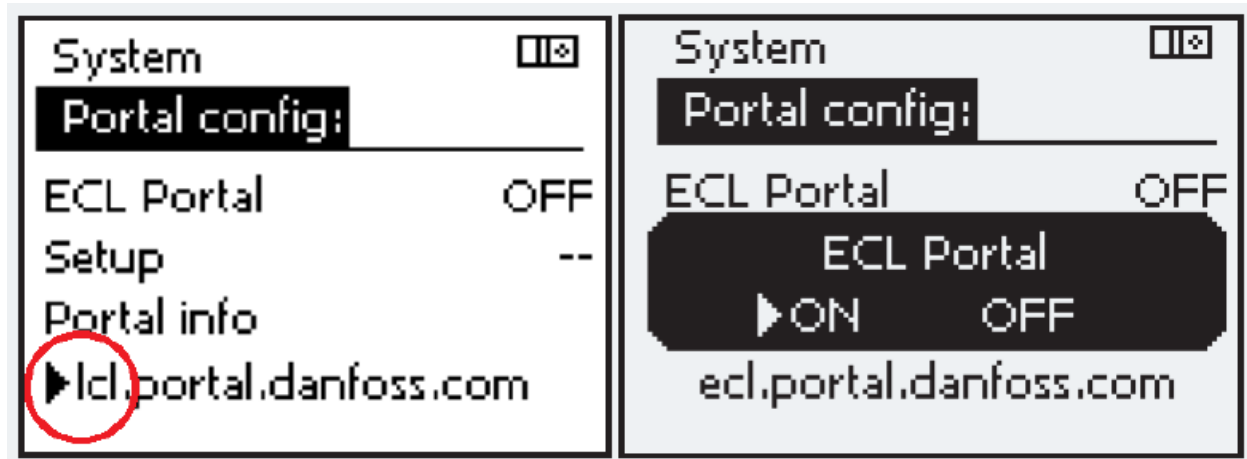
Activate the Leanheat® Monitor in ECL 296 / 310

The Leanheat® Monitor feature is activated in the ECL Comfort 296 / 310 menu <System ->Portal Con g>

Step:

Product software below version 2.2 The ECL portal has to be set to OFF (if the ECL Portal is active the setup menu is hidden).

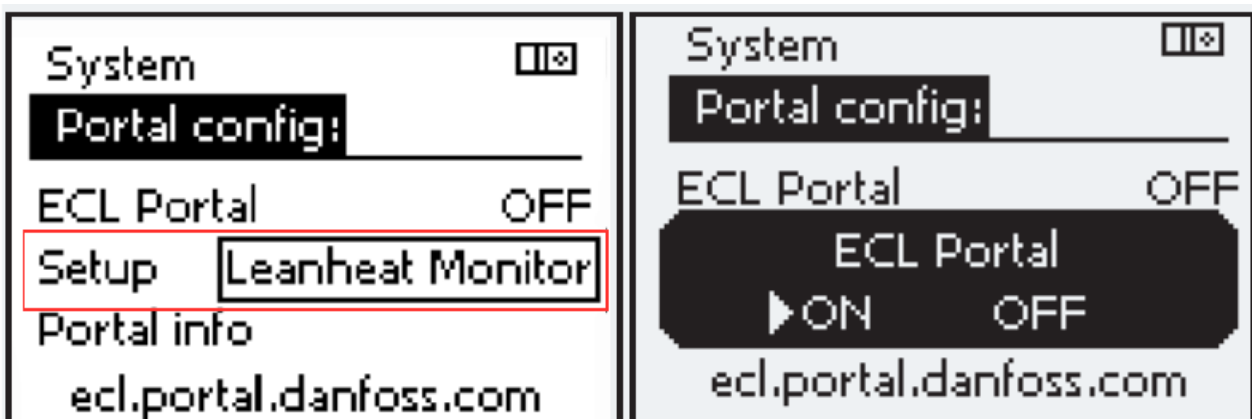
1. Change first letter in Portal info from e to l lcl.portal.danfoss.com (to select/change the knob on the device has to be used). Confirm by pushing the knob.
2. Enable the ECL portal to ON (to select the change knob on the device has to be used).



Step b

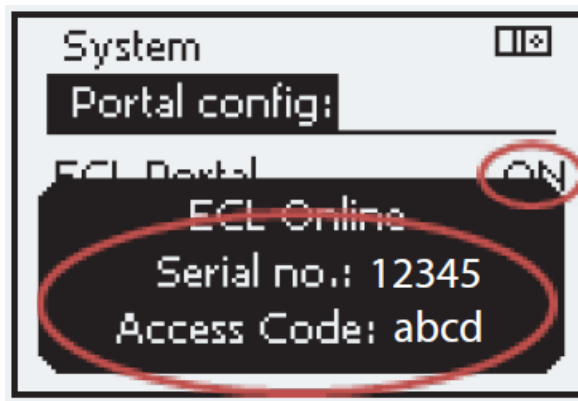
Product software above version 2.2

1. The ECL portal has to be set to OFF (if the ECL Portal is active the setup menu is hidden).
2. In the setup menu Leanheat® Monitor has to be selected.
3. Enable the ECL portal to ON (to select the change knob on the device has to be used).



Step c

Applies to both step a and step b You will need the serial number and access code to be able to register it to your user account. This information can be found in the <System ->Portal info > menu.



Ethernet Settings

Settings can be accessed under Menu -> System -> Ethernet. Confirm whether the IP address needs to be static or dynamically obtained by the Internet gateway DHCP.

Step 2: Software Configuration

For Product Software below Version 2.2

1. Set the ECL portal to OFF. Change the first letter in Portal info from 'e' to 'l' (lcl.portal.danfoss.com).
2. Enable the ECL portal to ON.

For Product Software above Version 2.2

1. Set the ECL portal to OFF.
2. Enable the ECL portal to ON.

Step 3: Register and Remote Control

1. Retrieve the serial number and access code from the Portal info menu.
2. Create a user account at <https://app.lhm.danfoss.com/> or contact your local Danfoss sales representative if you don't have an account.
3. Register the ECL Comfort 296 / 310 to your user account by providing the serial number and installation code.
4. You can now remotely control and monitor the heating installation, change settings, monitor temperatures, and receive email alerts.

Create your user account

<https://app.lhm.danfoss.com/> If you do not have an account, please contact your local Danfoss sales representative.

Sign up for a Danfoss Profile

[Log in](#)

[Sign up](#)

Benefits of a Danfoss Profile

- Easy access to a variety of Danfoss applications
- Single username and password
- Maintain your information in one place
- Overview of your Danfoss applications

We are not done including all our applications. You will soon have access to more of your preferred applications using the Danfoss Profile.

Email * Please enter email address

Password *

Re-type Password *

First name *

Last name *

☐ I agree to [Danfoss Profile terms of use](#)

☐ I have read and understood the [Danfoss privacy policy](#)

Submit

Register the ECL Comfort 296 / 310

Register the ECL Comfort 296 / 310 to your user account via the <Admin->+ Connect -> Connect ECL -> select Device type -> ECL-296/310> enter serial and installation code. The serial number and access code of the ECL Comfort 296/ 310 is needed. (See step 2).

Connect ECL

Device type
ECL-296/310



Serial number

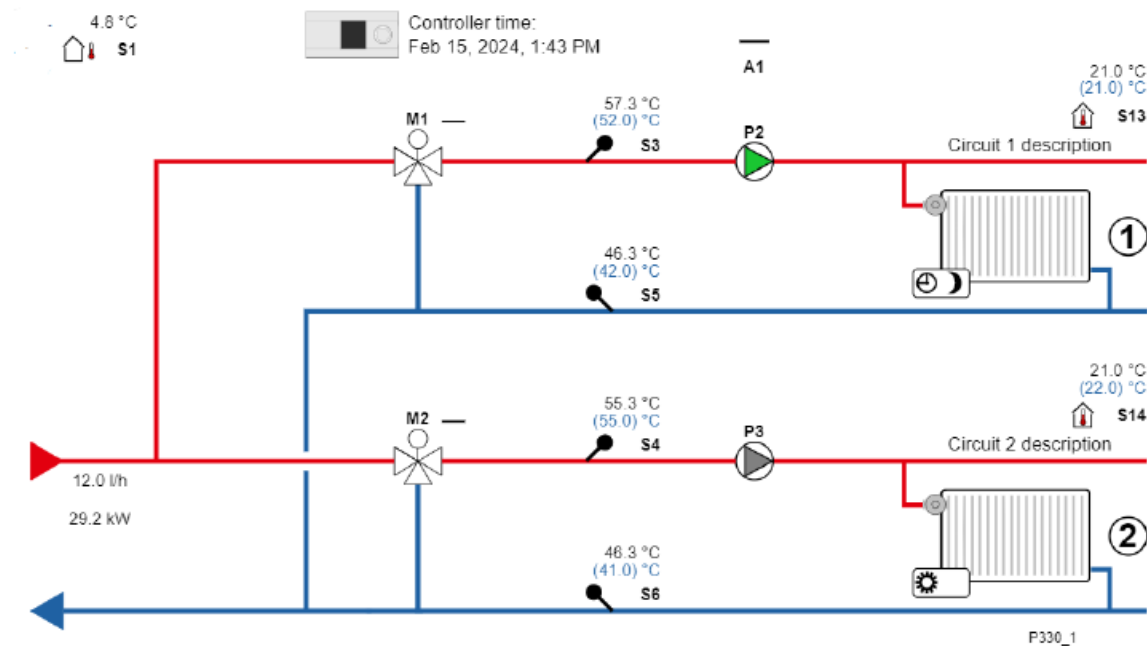
Code

Close

Connect

Remote control and monitor it

You are now ready to remotely control and monitor the heating installation. Settings of the ECL Comfort 296 / 310 can be changed, temperatures and operation can be monitored, and you can be alarmed via e-mail.



Any information, including, but not limited to information on the selection of product, its application or use, product design, weight, dimensions, capacity or any other technical data in product manuals, catalogues descriptions, advertisements, etc. and whether made available in writing, orally, electronically, on line or via download, shall be considered informative and is only binding if and to the extent, explicit reference is made in a quotation or order confirmation. Danfoss cannot accept any responsibility for possible errors in catalogues, brochures, videos and other material. Danfoss reserves the right to alter its products without notice. This also applies to products ordered but not delivered provided that such alterations can be made without changes to form, fit or function of the product. All trademarks in this material are property of Danfoss A/S or Danfoss group companies. Danfoss and the Danfoss logo are trademarks of Danfoss A/S. All rights reserved.

Danfoss A/S

Climate Solutions

danfoss.com

+45 7488 2222

(FAQ)

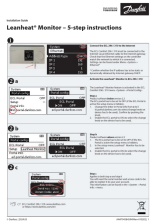
Q: Where can I find the serial number and access code?

A: The serial number and access code can be found in the Portal info menu on the device.

Q: How do I change the Ethernet settings on the controller?

A: Navigate to Menu -> System -> Ethernet to access and modify the Ethernet settings as required.

Documents / Resources



[Danfoss ECL 296 Home Automation System Temperature Controller](#) [pdf] Installation Guide
ECL 296, ECL 296 Home Automation System Temperature Controller, Home Automation System Temperature Controller, Automation System Temperature Controller, Temperature Controller, Controller

References

- [Leanheat® Monitor @ Danfoss](#)
- [Danfoss Global Product Store | Homepage](#)
- [User Manual](#)

[Manuals+.](#) [Privacy Policy](#)

This website is an independent publication and is neither affiliated with nor endorsed by any of the trademark owners. The "Bluetooth®" word mark and logos are registered trademarks owned by Bluetooth SIG, Inc. The "Wi-Fi®" word mark and logos are registered trademarks owned by the Wi-Fi Alliance. Any use of these marks on this website does not imply any affiliation with or endorsement.