



## Danfoss DMB Eliminator Hermetic Bi Flow Filter Drier Installation Guide

[Home](#) » [Danfoss](#) » Danfoss DMB Eliminator Hermetic Bi Flow Filter Drier Installation Guide 

### Contents

- [1 Danfoss DMB Eliminator Hermetic Bi Flow Filter Drier](#)
- [2 Documents / Resources](#)
- [3 Related Posts](#)



### Danfoss DMB Eliminator Hermetic Bi Flow Filter Drier



#### Refrigerants:

A1: R134a, R404A, R407C, R507, R22, R410A. A2L: R32, R444B, R452B, R454B, R1234yf. A3: R290, R600a  
For other refrigerants, please contact Danfoss representative.

Only solder versions (cu-plated / pure copper) and connection sizes below 25mm are approved for A3 refrigerants. Only connection sizes below 25 mm are approved for A2L.

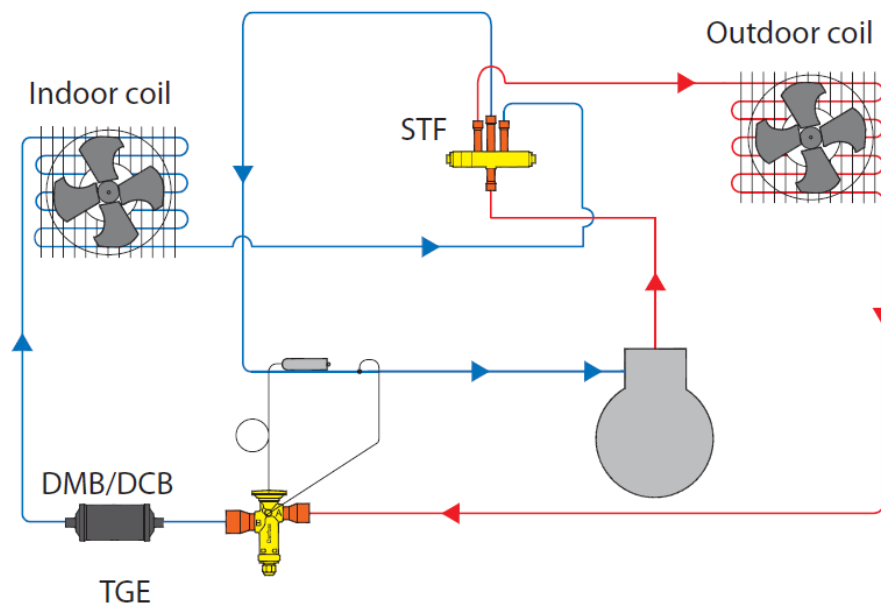
### Temperature range:

- 40 70 °C
- 40 160 °F

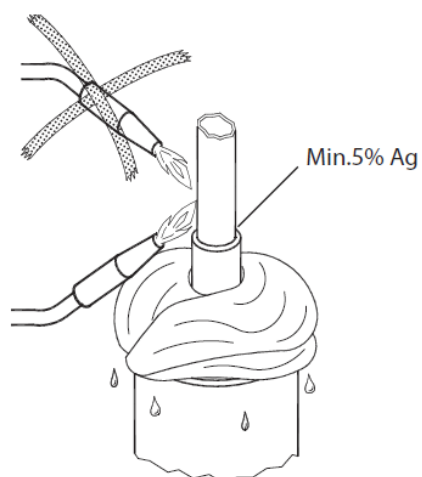
### Max. working pressure:

PS / MWP = 46 bar / 667 psig

### Installation



### Soldering

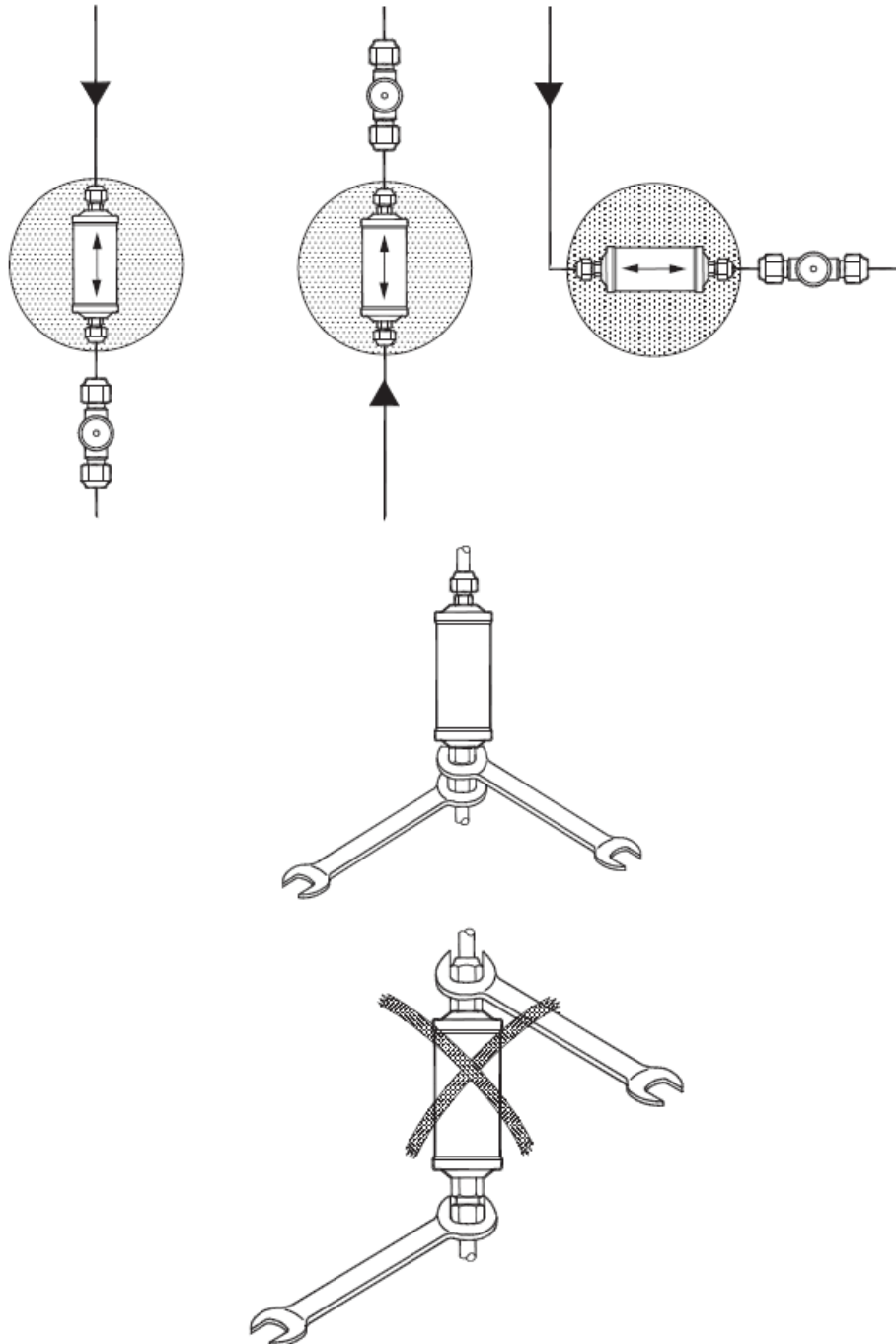


After charging, mark the system with the refrigerant and the oil used.  
Customer best practice will still be needed:

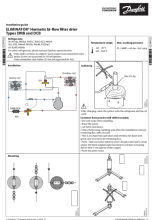
- Use wet wrap when installing

- Braze the joints.
- Let them cool down.
- Clean the brazing /welding area after the installation (remove remaining flux with a brush).
- This is an important operation and needs to be done with great care to remove all remaining flux.
- Paint / Anti-corrosive needs to cover all open steel parts, areas where the black original paint has been burnt due to brazing and at least 3 cm approx. of the copper.
- Paint the joints twice.

## Mounting



## Documents / Resources



## [Danfoss DMB Eliminator Hermetic Bi Flow Filter Drier](#) [pdf] Installation Guide

DMB, Eliminator Hermetic Bi Flow Filter Drier, DMB Eliminator Hermetic Bi Flow Filter Drier, DC B