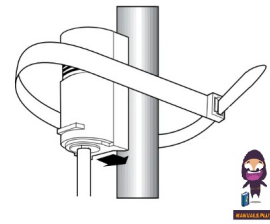




**DHS-SMDT Heat
Recovery Mmodule**



Danfoss DHS-SMDT Heat Recovery Mmodule Installation Guide

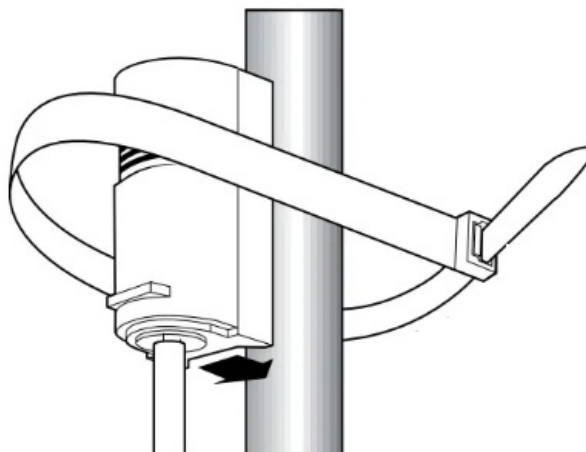
[Home](#) » [Danfoss](#) » Danfoss DHS-SMDT Heat Recovery Mmodule Installation Guide 

Contents

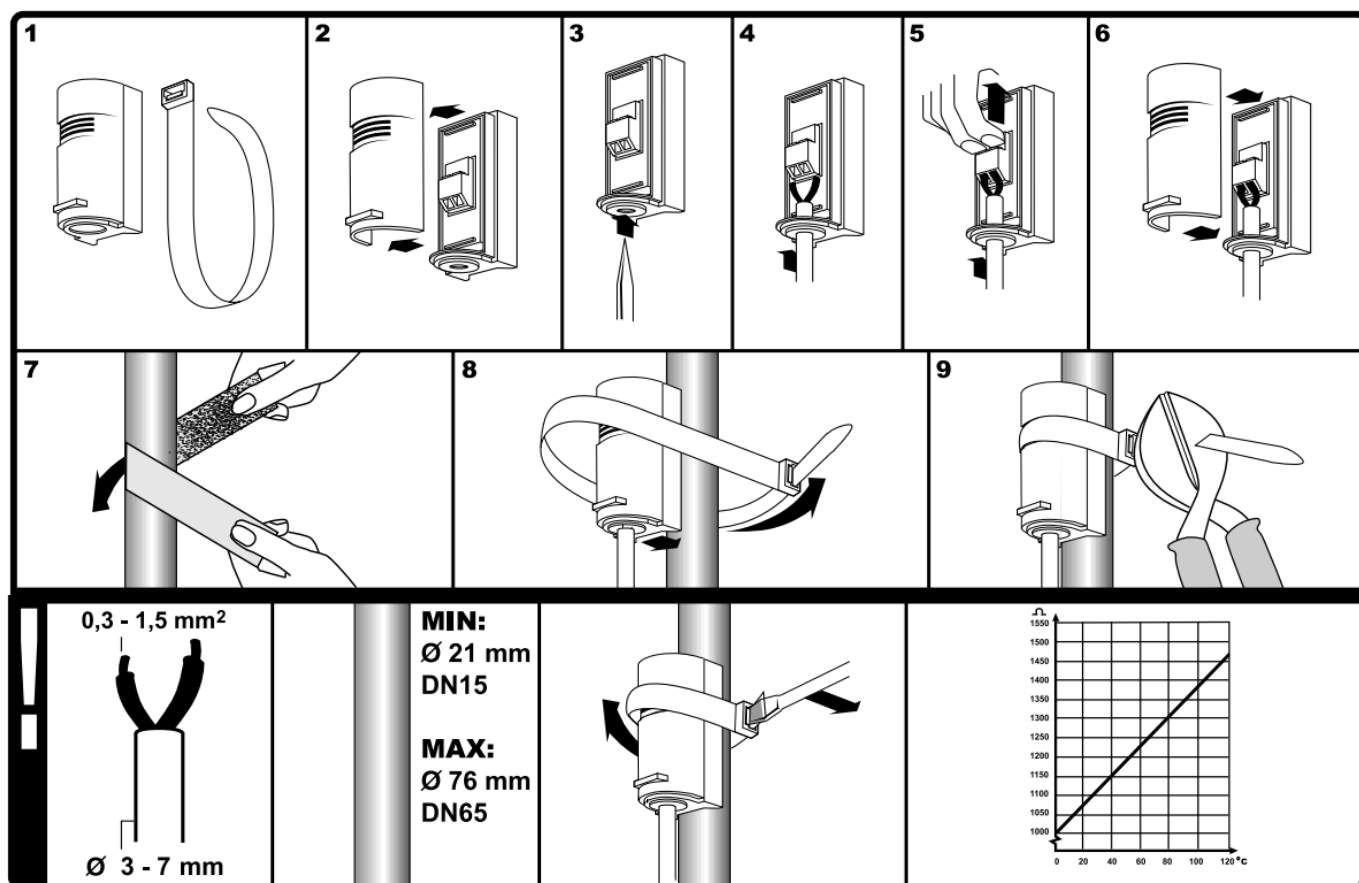
- [1 Danfoss DHS-SMDT Heat Recovery Mmodule](#)
- [2 Installation Instruction](#)
- [3 Overview](#)
- [4 Installation Steps](#)
- [5 Specifications](#)
- [6 Safety Precautions](#)
- [7 FAQs](#)
- [8 Documents / Resources](#)
 - [8.1 References](#)



Danfoss DHS-SMDT Heat Recovery Mmodule



Installation Instruction



Overview

This document provides instructions for the installation and use of the ESM-11 system. Follow the steps carefully to ensure proper setup and operation.

Installation Steps

1. Prepare the mounting surface and ensure it is clean and dry.
2. Attach the first component to the surface using the provided adhesive strip. Ensure it is aligned correctly.
3. Secure the component with the provided strap, wrapping it tightly around the surface.
4. Use the provided cutting tool to trim any excess strap material.
5. Repeat the process for additional components as needed.

Specifications

Model	ESM-11
Manufacturer	Danfoss
Document Code	DHS-SMDT/DK
Revision Date	12/2020

Safety Precautions

- Ensure all components are securely fastened before use.
- Do not use damaged or defective parts.
- Follow all local safety regulations during installation.

Contact Information

For further assistance, please contact Danfoss customer support.

FAQs

What is the ESM-11 used for?

The ESM-11 is used for secure mounting in various applications.

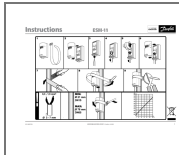
Can I install the ESM-11 myself?

Yes, the ESM-11 is designed for easy installation. Follow the instructions provided.

What should I do if a component is missing?

Contact Danfoss customer support for assistance with missing parts.

Documents / Resources



[Danfoss DHS-SMDT Heat Recovery Mmodule](#) [pdf] Installation Guide
DHS-SMDT, DK, DHS-SMDT Heat Recovery Mmodule, DHS-SMDT, Heat Recovery Mmodule,
Recovery Mmodule

References

- [User Manual](#)

[Manuals+](#), [Privacy Policy](#)

This website is an independent publication and is neither affiliated with nor endorsed by any of the trademark owners. The "Bluetooth®" word mark and logos are registered trademarks owned by Bluetooth SIG, Inc. The "Wi-Fi®" word mark and logos are registered trademarks owned by the Wi-Fi Alliance. Any use of these marks on this website does not imply any affiliation with or endorsement.