

Danfoss

**DF013G8565
Operator With
Combined Sensor
and Dial**



Danfoss DF013G8565 Operator With Combined Sensor and Dial Instructions

[Home](#) » [Danfoss](#) » Danfoss DF013G8565 Operator With Combined Sensor and Dial Instructions 

Contents

- [1 Danfoss DF013G8565 Operator With Combined Sensor and Dial](#)
- [2 Specifications](#)
- [3 Mounting on Convactor with Danfoss RA 2000 Valve](#)
- [4 Installing Operator through Conduit with Danfoss RA 2000 Valve](#)
- [5 Limiting and Blocking the Setting Range](#)
- [6 Limiting and blocking](#)
- [7 FAQs](#)
- [8 Documents / Resources](#)
 - [8.1 References](#)

Danfoss

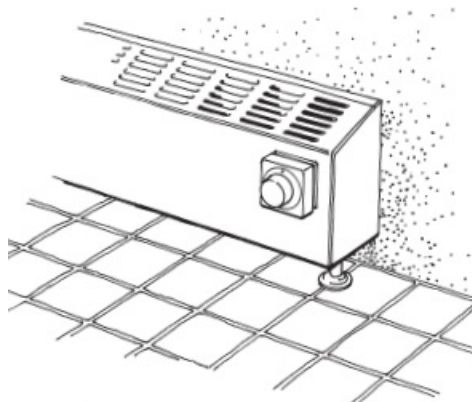
Danfoss DF013G8565 Operator With Combined Sensor and Dial



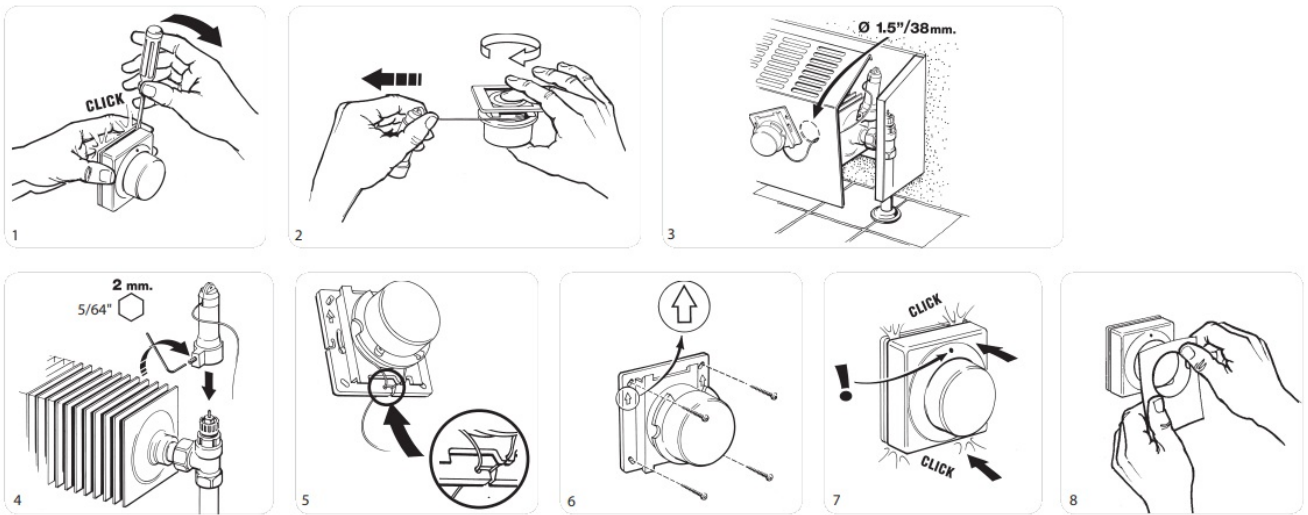
Specifications

- Model: 013R9223
- Operator with a combined remotely mounted sensor and dial
- Compatible with Danfoss RA 2000 valve
- Mounting radius: minimum 10 inches
- Operating distance: 4-5 feet
- Socket sizes: Small Socket – 5/64, Large Socket – 3/16 (34 mm)

Mounting on Convactor with Danfoss RA 2000 Valve

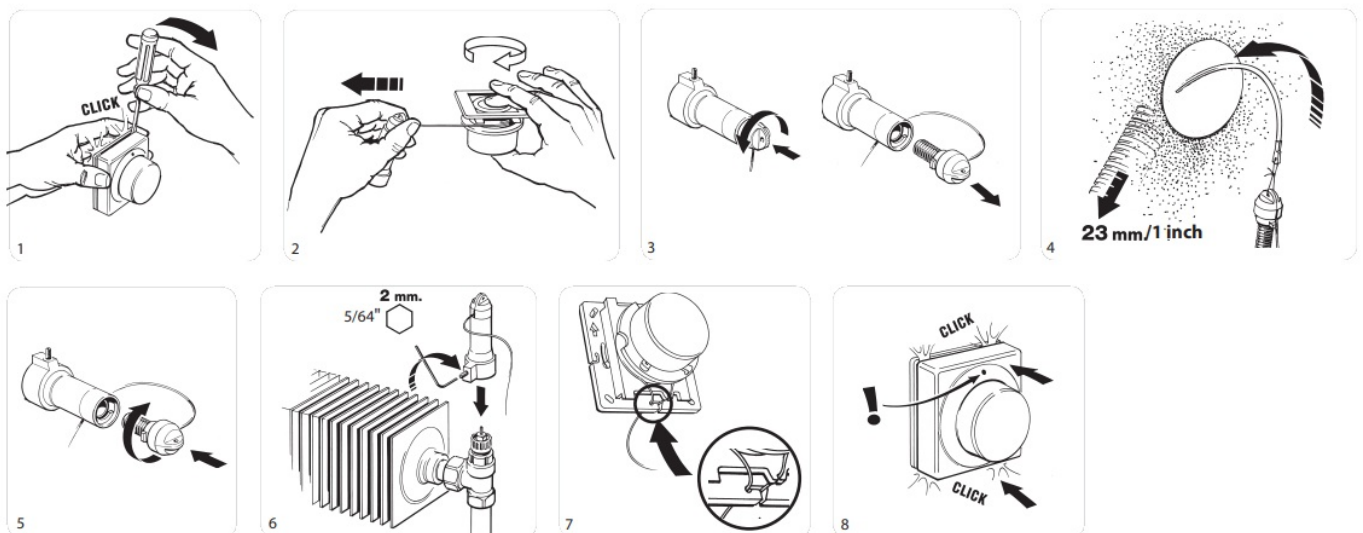
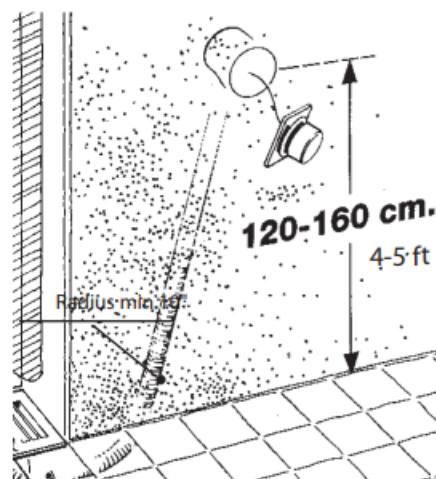


1. Attach the operator to the convactor, ensuring a minimum radius of 10 inches.



2. Ensure the remotely mounted sensor and dial are within the operating distance of 4-5 feet.

Installing Operator through Conduit with Danfoss RA 2000 Valve

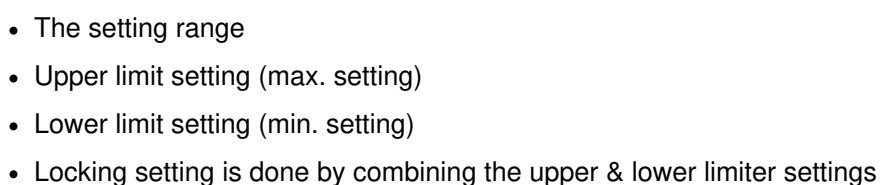


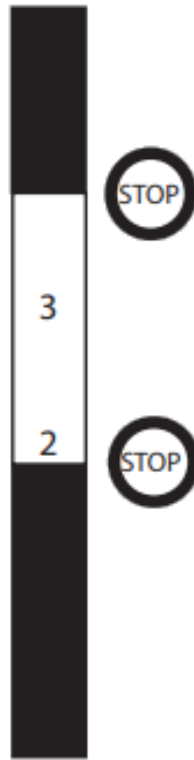
1. Insert the operator through the conduit, ensuring proper alignment with the valve.

2. Use the appropriate socket size (Small Socket – 5/64") for secure installation.

Limiting and Blocking the Setting Range

- If this operator is being installed on a RAV, VMT or KOVM valve, it is necessary- sary to replace the pre-attached small socket with the large socket included In the product package. RAV/VMT/KOVM valves have a larger operator connection than RA 2000 valves. If this operator unit is being installed on a RA valve fitted with a RA to RA 2000 adapter (013G8070), the socket Spring must be replaced with the gray spring from the large socket in included in the product package.





FAQs

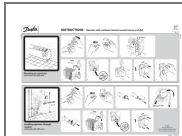
Q: How do I replace the small socket with the large socket?

A: If installing on RAV, VMT, or KOVM valves, replace the pre-attached small socket with the large socket included in the product package. These valves have a larger operator connection than RA 2000 valves.

Q: What should I do if installing an onana RA valve with an RA to RA 2000 adapter?

A: Replace the socket spring with the gray spring from the large socket included in the product package when using an RA to RA 2000 adapter.

Documents / Resources



[Danfoss DF013G8565 Operator With Combined Sensor and Dial](#) [pdf] Instructions

RA 2000, RAV, VMT, KOVM, DF013G8565 Operator With Combined Sensor and Dial, DF013G8565, Operator With Combined Sensor and Dial, Combined Sensor and Dial, Sensor and Dial, and Dial

References

- [User Manual](#)

[Manuals+](#), [Privacy Policy](#)

This website is an independent publication and is neither affiliated with nor endorsed by any of the trademark owners. The "Bluetooth®" word mark and logos are registered trademarks owned by Bluetooth SIG, Inc. The "Wi-Fi®" word mark and logos are registered trademarks owned by the Wi-Fi Alliance. Any use of these marks on this website does not imply any affiliation with or endorsement.