

Danfoss Cylinder CAD Configurator



Danfoss Cylinder CAD Configurator User Guide

[Home](#) » [Danfoss](#) » Danfoss Cylinder CAD Configurator User Guide 

Contents

- [1 Danfoss Cylinder CAD Configurator](#)
- [2 Product Specifications](#)
- [3 Product Usage Instructions](#)
- [4 Danfoss Cylinder Products and Markets](#)
- [5 Registration & Login](#)
- [6 Online CAD Configurator User Guide-Standard Cylinder or Parts](#)
- [7 Online CAD Configurator- Ordering](#)
- [8 Export Data Sheet](#)
- [9 Export Data Sheet](#)
- [10 Drawing](#)
- [11 Documents / Resources](#)
 - [11.1 References](#)
- [12 Related Posts](#)



Danfoss Cylinder CAD Configurator



Product Specifications

- **Bore Size:** up to 60
- **Stroke:** up to 20 meters
- **Pressure:** up to 660 bar
- **Metric** and Imperial designs

Product Usage Instructions

Registration & Login

1. If this is your first time visiting the CAD configurator, set up a new account by selecting the Login button.
2. If you already have an account, click on the Login button.

Registration & Login Continued

Fill out the required information. Note that pricing access is not granted to personal email accounts. Contact your Customer Support Representative for pricing access if needed.

Login Process

1. After initial login, use the Login button to start the quoting process.
2. Enter your email and password.
3. Select the Login button.

Standard Cylinder or Parts

- This page is where you can start your quoting process. You can choose standard cylinders, parts, design

codes, and accessories.

- The discount will auto-populate when you select the Enter button.

Quote Summary and Cart

1. The first part of the quote displays the cylinder information. You can make changes by going back to the Enter button.
2. The second section breaks down the prices associated with the cylinder.
3. The final section allows you to add the cylinder to your cart for checkout.

Adding to Cart

When ready to add to the cart, click on the “Add to Cart” button.

Ordering Process

1. Update Cart or Remove from Cart as needed.
2. The “Update Cart” option allows you to modify your order.
3. The “Clear Cart” option empties the cart for a fresh start.
4. Proceed with the checkout process by filling out the necessary information.

Checkout Details

1. Verify That the information is correct.
2. Complete Ship to information.
3. Select whether it is a Quote or an Order.
4. Add a PO # if required.
5. Choose the shipping company you prefer.
6. Include any additional comments for the order.
7. Review the order details and select “Complete” if everything is accurate.

Frequently Asked Questions (FAQ)

Q: Can I access pricing without registering?

- **A:** Pricing access is not granted to personal email accounts.
- Contact your Customer Support Representative for pricing access if needed.

Q: How do I modify my order?

- **A:** Use the “Update Cart” option to make changes to your order before checkout.

Danfoss Cylinder Products and Markets

Type	Description	Product
Tie Rod	Heavy Duty NFPA	N5, NZ
	Heavy Duty Large Bore	HG, VG
	Heavy Duty ISO 6020-2 / Din 25554	IHM, TV
	Medium Duty NFPA	R5, RE
	Light Duty Pneumatics	VP/Q6, L
Threaded	Threaded Construction	TS, TA
Welded	Industrial Welded	HW, WH
Mill	Mill Duty	EM, IM
SL	Extra Large Customs	XL Custom

- **Bore Size:** up to 60"
- **Stroke:** up to 20 meters
- **Pressure:** up to 660 bar Metric and Imperial designs



Online CAD Configurator User Guide

- Our easy-to-use, mobile-friendly cylinder configurator provides on-demand access.
- 2D & 3D drawings
- PDF datasheets
- Application guides
- Calculation tools
- Activation is needed for pricing after approval of the request.

Hi,

Thank you for the RFQ!

Also, do you have an account for the online CAD configurator? It is easy, fast and convenient! Please create an account and you will receive a 35% discount on your orders! Here is the link where you can get quotes and pricing online.

[Cylinder CAD Configurator | Danfoss PowerSource \(eatonpowersource.com\)](https://eatonpowersource.com)

Quoted lead times provided are general guidance. Lead times will be confirmed upon receipt of order and are subject to change based on material availability.

Registration & Login

- The above image is what you will see when clicking the link, select any of the series of cylinders in red and it will take you to a registration form.

The screenshot displays the Danfoss POWERSOURCE website. At the top, there is a navigation bar with a red background containing the Danfoss logo and the text "POWERSOURCE". Below this is a search bar with a dropdown menu set to "All" and a search button. The main content area features a large banner for the "Cylinder CAD Configurator" with a red overlay box containing text about configuring cylinders and requesting quotes. Below the banner, there are sections for "Downloads" (with a link to the "Online CAD configurator user guide") and "GET STARTED BY CLICKING A CYLINDER SERIES BELOW, OR REVIEW THE CONFIGURATOR USER GUIDE FOR A TUTORIAL". This section lists three categories of cylinders: "HEAVY-DUTY TIE ROD NFPA CYLINDERS", "MEDIUM-DUTY TIE-ROD NFPA CYLINDERS", and "ELECTROHYDRAULIC TIE-ROD CYLINDERS", each with links to specific product series.

Danfoss POWERSOURCE

Wish List | Batch Search

All Enter Part Number, Model Code, Description, etc. Q

Products Markets Tools Where to Buy

Cylinder CAD Configurator

Configure a cylinder and request a quote from anywhere in the world. Danfoss' cylinder configurator allows users to design a cylinder, create model codes, download CAD drawings and request pricing for Hydro-Line and Vickers by Danfoss industrial cylinder products, including tie rod, mill duty, threaded and electrohydraulic cylinders. Product models are available in more than 150 CAD and graphic formats. Click on a configurator [below](#) and then login to get started!

Our easy-to-use, mobile-friendly cylinder configurator provides on-demand access to:

- 2D & 3D drawings
- PDF datasheets
- Application guides
- Calculation tools

Create an account and log in for full functionality.

Downloads

Online CAD configurator user guide

GET STARTED BY CLICKING A CYLINDER SERIES BELOW, OR REVIEW THE CONFIGURATOR USER GUIDE FOR A TUTORIAL

HEAVY-DUTY TIE ROD NFPA CYLINDERS	MEDIUM-DUTY TIE-ROD NFPA CYLINDERS	ELECTROHYDRAULIC TIE-ROD CYLINDERS
Hydro-Line N5 series Catalog	Hydro-Line R5/HRS series Catalog	Danfoss EH series Catalog
Hydro-Line HG series Catalog	Vickers by Danfoss RE/RF series Catalog	
Vickers by Danfoss NZ series Catalog		
Vickers by Danfoss VG series Catalog		

Registration & Login

Configure & CAD **New Account** **Login**

Part Number Configurator

Search by PN **Find Cylinder**

Part No.
Series
Bore Inch
Mounting Style
Rod Size Inch
Cushion Position (Rod End)
Cushion Position (Blind End)
Rod End Type
Rod End Style (Cap)
Piston Seal Type

Info Preview

TA	Brand	Vickers by Danfoss	Request quote for pricing
01	Series	Spacemaker Air	
E	Mounting style	Foot	
A	Bore	2 1/2"	
B	Cushions	Rod end: - Blind end: -	
A	Rod end	Rod diameter: 3/4" Type end: 4	
A	Seals	Type: U Cup Material: Nitrile (Buna-N)	
1	Port size	NPT	
A	Port location	Rod end: 1 Blind end: 1	
A	Limit switch	None	
001	Stroke	0-1/16"	
00	Extra Rod Projection	0"	

Configure a cylinder and request a quote from anywhere in the world.

1. If this is the first time visiting the CAD configurator you must set up a new account.
2. If you have an account already select the Login button.

Configure & CAD New Account **Login**

Account Login
Revised 10/07/2022

Please enter your Email Address:

Do you already have an account?

☐ Yes, my password is: Remember me? ☒

☐ Yes, but I forgot my password

☒ No, please sign me up as a new user

Create new account

- Fill out the required information. Pricing access will not be granted to personal email accounts.

New Account

By filling out the form below, I understand and agree that any use of my personal data will take place in compliance with the relevant and applicable data privacy laws and the [Danfoss Privacy Policy](#).

* Company Name

* First/Last Name First Name Last Name

Address

* City

* State

* ZIP Code

* Country

* Email

Auto login? ☐ (Automatic access if last successful login was from the same browser on the same desktop)

* Password (6-20 characters) [\(Show\)](#) [\(Create random password\)](#)

* Confirm password [\(Show\)](#)

CAD format

☐ Opt-in to Cylinders Marketing

I agree to be informed regularly about Danfoss products, promotions and news. I understand and agree that Danfoss will use my data to personalize marketing communications. Any use of my personal data will take place in compliance with the relevant and applicable data privacy laws and the [Danfoss Privacy Policy](#). I can withdraw my consent to receive marketing communications at any time by contacting Danfoss.

* ☐ CADENAS CAD Terms and Conditions

I agree to [CADENAS CAD Terms and Conditions](#). I hereby consent to the processing (collection, storage and use) of my personal data according to the data protection declaration and the data protection notice made known to me. I have read the terms of use of the PARTcommunity forum and hereby also declare my consent.

* Indicates mandatory fields

[Create Account](#)

- **Note:** If you are just signing up or do not have access to pricing, you must send an email to your Customer Support Representative (CSR) to gain pricing access.
- Please refer to the Login instructions following registration.

Configure & CAD **New Account** **Login**

Part Number Configurator

Search by PN [Find Cylinder](#)

Part No.

Series

Bore Inch

Info **Preview**

Brand	Series	Industrial Welded Cylinders	Request quote for pricing
WH	10	Mounting	Cap Clevis Mount
GH	Bore & Rod Diameter	3-1/4" Bore, 1-3/8" Rod	
	End End Type	Small Male UN Thread	

Vickers by Danfoss WH Series Cylinder Configurator

[Configure & CAD](#)[New Account](#)[Login](#)**1**

Account Login

Revised 10/07/2022

Please enter your Email Address:

2

Do you already have an account?

- ☒ Yes, my password is: Remember me? ☒
- ☐ Yes, but I forgot my password
- ☐ No, please sign me up as a new user

3**4**

1. After initial Login during registration, you will need to use the Login button shown to start the process of quoting.
2. Enter your email
3. Enter your password.
4. Select the Login button.

Online CAD Configurator User Guide-Standard Cylinder or Parts

[Configure & CAD](#)[Pricing & Lead Time](#)[My Account](#)[Logoff](#)

Pricing & Lead Time

SKU

Quantity

This page is the beginning of whatever you are starting to quote. If you have a standard cylinder you can go to the Pricing & Lead Time. The below screen is what you will see.

Pricing & Lead Time

Enter

SKU

Enter SKU or Speed Number

Quantity

1

Enter

Pricing & Lead Time

Enter Price & Leadtime Cart View

SKU

RF10GE5N1KA10000

Quantity

1

Enter

1. There are several options for the information that can go into the box. Standard part numbers that do not have an "X" in the part number, some Design Codes you will be able to quote along with Accessories.
2. The discount will auto-populate when you select the "Enter" button.
3. Select the Enter button.

Pricing & Lead Time

Enter Price & Leadtime Cart View

RF	Brand	Vickers by Danfoss	Price Components	
10	Series	1500 PSI Medium Duty Hydraulic	Base Price	\$713.00
GE	Mounting	Cap Fixed Clevis	Stroke	\$176.00
5	Bore & Rod Diameter	3-1/4" Bore, 1" Rod	(10" Gross Stroke @ \$17.60)	
N	Rod End Type	Small male UN Thread	List Price	\$889.00
1	Seal Options	Normal	Less 35.00% Discount	\$311.15
K	Port Options	NPTF	Net Price	\$577.85
A	Port Location	Head: 1 Cap: 1		
100	Cushion Location	Head: - Cap: -		
	Cylinder Stroke	10"		

Normally ships in 5 business day(s)

Discount shown will only apply if the order is completed online or the quote is saved through the configurator. Standard discount to be applied otherwise.

Comment:
Optional comment or instructions

Add to Cart

Pricing & Lead Time

Enter

Price & Leadtime

Cart View

4

RF

10

GE

S

N

1

K

A

100

Brand

Series

Mounting

Bore & Rod Diameter

Rod End Type

Seal Options

Port Options

Port Location

Cushion Location

Cylinder Stroke

Vickers by Danfoss

1500 PSI Medium Duty Hydraulic

Cap Fixed Clevis

3-1/4" Bore, 1" Rod

Small male UN Thread

Normal

NPTF

Head: 1 Cap: 1

Head: - Cap: -

10"

Region: North America

Price Components

Base Price

Stroke

(10" Gross Stroke @ \$17.60)

List Price

Less 35.00% Discount

Net Price

\$713.00

\$176.00

\$889.00

\$311.15

\$577.85

Normally ships in 5 business day(s)

Discount shown will only apply if the order is completed online or the quote is saved through the configurator. Standard discount to be applied otherwise.

Comment:

Optional comment or instructions

Add to Cart

3

1. The first part of the quote will give you the information you entered for the cylinder. You can go back to the Enter button to make changes to the cylinder part number. A catalog with information regarding each selection on the cylinder part number is located on slide 5.
2. The second section is a breakdown of the prices associated with the cylinder.
3. The final section allows you to add the cylinder to your cart for checkout. More on ordering in later slides.
4. The cart view gives you more of a direct look at the information you selected.

Pricing & Lead Time

Part #/Description	Quantity	List Price	Discount%	Net Price
RF10GE5N1KA10000 (Get CAD) <ul style="list-style-type: none"> Brand: Vickers by Danfoss Series: 1500 PSI Medium Duty Hydraulic Mounting: Cap Fixed Clevis Bore & Rod Diameter: 3-1/4" Bore, 1" Rod Rod End Type: Small male UN Thread Seal Options: Normal Port Options: NPTF Port Location: Head: 1 Cap: 1 Cushion Location: Head: - Cap: - Cylinder Stroke: 10" Normally ships in 5 business day(s)	1	\$889.00	35.00%	\$577.85

Discount shown will only apply if the order is completed online or the quote is saved through the configurator. Standard discount to be applied otherwise.

Pricing & Lead Time

Enter	Price & Leadtime	Cart View																																
<div> <div>RF</div> <div>10</div> <div>GE</div> <div>S</div> <div>N</div> <div>I</div> <div>K</div> <div>A</div> <div>100</div> </div>	<table> <tr><td>Brand</td><td>Vickers by Danfoss</td></tr> <tr><td>Series</td><td>1500 PSI Medium Duty Hydraulic</td></tr> <tr><td>Mounting</td><td>Cap Fixed Clevis</td></tr> <tr><td>Bore & Rod Diameter</td><td>3-1/4" Bore, 1" Rod</td></tr> <tr><td>Rod End Type</td><td>Small male UN Thread</td></tr> <tr><td>Seal Options</td><td>Normal</td></tr> <tr><td>Port Options</td><td>NPTF</td></tr> <tr><td>Port Location</td><td>Head: 1 Cap: 1</td></tr> <tr><td>Cushion Location</td><td>Head: - Cap: -</td></tr> <tr><td>Cylinder Stroke</td><td>10"</td></tr> </table>	Brand	Vickers by Danfoss	Series	1500 PSI Medium Duty Hydraulic	Mounting	Cap Fixed Clevis	Bore & Rod Diameter	3-1/4" Bore, 1" Rod	Rod End Type	Small male UN Thread	Seal Options	Normal	Port Options	NPTF	Port Location	Head: 1 Cap: 1	Cushion Location	Head: - Cap: -	Cylinder Stroke	10"	<p>Region: North America</p> <p>Price Components</p> <table> <tr><td>Base Price</td><td>\$713.00</td></tr> <tr><td>Stroke</td><td>\$176.00</td></tr> <tr><td>(10" Gross Stroke @ \$17.60)</td><td></td></tr> <tr><td>List Price</td><td>\$889.00</td></tr> <tr><td>Less 35.00% Discount</td><td>\$311.15</td></tr> <tr><td>Net Price</td><td>\$577.85</td></tr> </table> <p>Normally ships in 5 business day(s)</p> <p>Discount shown will only apply if the order is completed online or the quote is saved through the configurator. Standard discount to be applied otherwise.</p> <p>Comment: Optional comment or instructions</p> <p>Add to Cart</p>	Base Price	\$713.00	Stroke	\$176.00	(10" Gross Stroke @ \$17.60)		List Price	\$889.00	Less 35.00% Discount	\$311.15	Net Price	\$577.85
Brand	Vickers by Danfoss																																	
Series	1500 PSI Medium Duty Hydraulic																																	
Mounting	Cap Fixed Clevis																																	
Bore & Rod Diameter	3-1/4" Bore, 1" Rod																																	
Rod End Type	Small male UN Thread																																	
Seal Options	Normal																																	
Port Options	NPTF																																	
Port Location	Head: 1 Cap: 1																																	
Cushion Location	Head: - Cap: -																																	
Cylinder Stroke	10"																																	
Base Price	\$713.00																																	
Stroke	\$176.00																																	
(10" Gross Stroke @ \$17.60)																																		
List Price	\$889.00																																	
Less 35.00% Discount	\$311.15																																	
Net Price	\$577.85																																	

- When you are ready to add to the cart you will hit the "Add to Cart".

An embedded page at danfoss.scsdpq.com says

Add RF10GE5N1KA10000 to cart?

OK

Cancel

- Next, you would either Update the Cart or Remove it from the Cart

Pricing & Lead Time

Enter
Price & Leadtime
Cart View

RF

10

GE

5

N

1

K

A

100

Brand: Vickers by Danfoss
Series: 1500 PSI Medium Duty Hydraulic
Mounting: Cap Fixed Clevis
Bore & Rod Diameter: 3-1/4" Bore, 1" Rod
Rod End Type: Small male UN Thread
Seal Options: Normal
Port Options: NPTF
Port Location: Head: 1 Cap: 1
Cushion Location: Head: - Cap: -
Cylinder Stroke: 10"

Region: North America

Price Components
Base Price: \$713.00
Stroke: \$176.00
(10" Gross Stroke @ \$17.60)
List Price: \$889.00
Less 35.00% Discount: ~~\$311.15~~
Net Price: \$577.85

Normally ships in 5 business day(s)

Discount shown will only apply if the order is completed online or the quote is saved through the configurator. Standard discount to be applied otherwise.

Comment:
Optional comment or instructions

Update Cart Remove from Cart

Added RF10GE5N1KA10000

An embedded page at danfoss.scscpq.com says

Remove RF10GE5N1KA10000 from cart?

OK

Cancel

Online CAD Configurator- Ordering

Configure & CAD
Dashboard
My Account
RFQ/Order Cart (1)
Logoff

Shopping Cart

Del?	Line#	Part #/Description	Quantity	List Price	Discount%	Net Price
<input type="checkbox"/>	1	RF10GE5N1KA10000 (Get CAD) <ul style="list-style-type: none"> Brand: Vickers by Danfoss Series: 1500 PSI Medium Duty Hydraulic Mounting: Cap Fixed Clevis Bore & Rod Diameter: 3-1/4" Bore, 1" Rod Rod End Type: Small male UN Thread Seal Options: Normal Port Options: NPTF Port Location: Head: 1 Cap: 1 Cushion Location: Head: - Cap: - Cylinder Stroke: 10" Normally ships in 5 business day(s) Comment: Optional comment or instructions	1	\$889.00	35.00%	\$577.85

Discount shown will only apply if the order is completed online or the quote is saved through the configurator. Standard discount to be applied otherwise.

Update Cart Check Out Clear Cart

1

3

2

1. The Update Cart will allow you to change your order.
2. The Clear Cart will empty the cart and you can start over.
3. The checkout button will take you to a checkout section that you will need to fill out.



<https://danfoss.com>

Sold To

Company Name Danfoss
Name Dean Sieler
Address 1
City Jackson
State/Province Michigan
Zip/Postal Code 49202
Country United States
Email dean.sielier@danfoss.com

Ship To

*Company Name Danfoss
*Name Dean Sieler
*Address 1
*City Jackson
*State Michigan
*ZIP Code 49202
*Country United States
*Indicates mandatory fields

Type	PO#	Ship Via	Comment
<input type="text" value="3"/>	<input type="text" value="4"/>	<input type="text" value="5"/>	<input type="text" value="Optional comment or instructions 6"/>

Line#	Part #/Description	Quantity	List Price	Discount%	Net Price
1	RF10GESN1KA10000 (Get CAD) <ul style="list-style-type: none">Brand: Vickers by DanfossSeries: 1500 PSI Medium Duty HydraulicMounting: Cap Fixed ClevisBore & Rod Diameter: 3-1/4" Bore, 1" RodRod End Type: Small male UN ThreadSeal Options: NormalPort Options: NPTFPort Location: Head: 1 Cap: 1Cushion Location: Head: - Cap: -Cylinder Stroke: 10" Normally ships in 5 business day(s)	1	\$889.00	35.00%	\$577.85

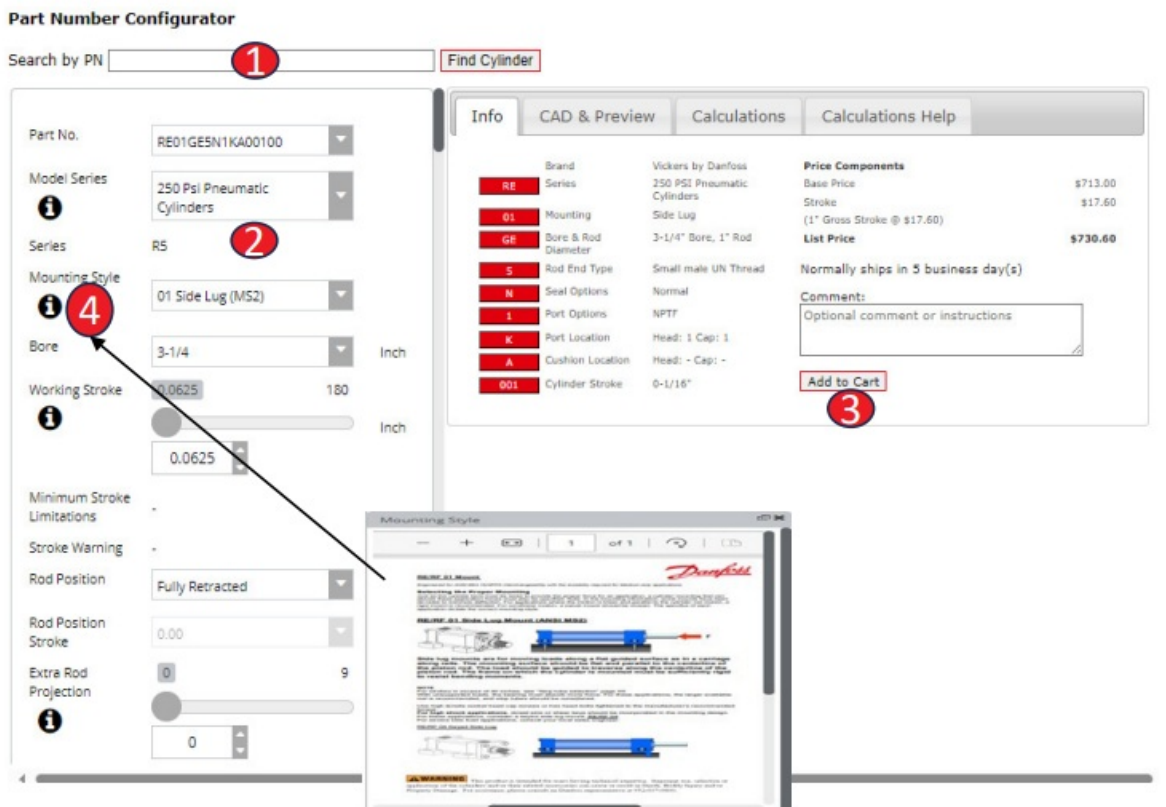
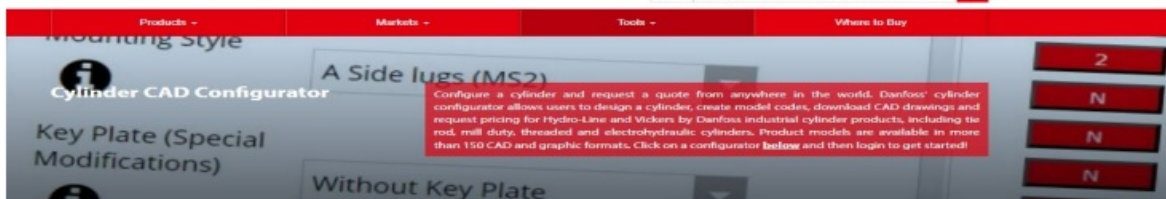
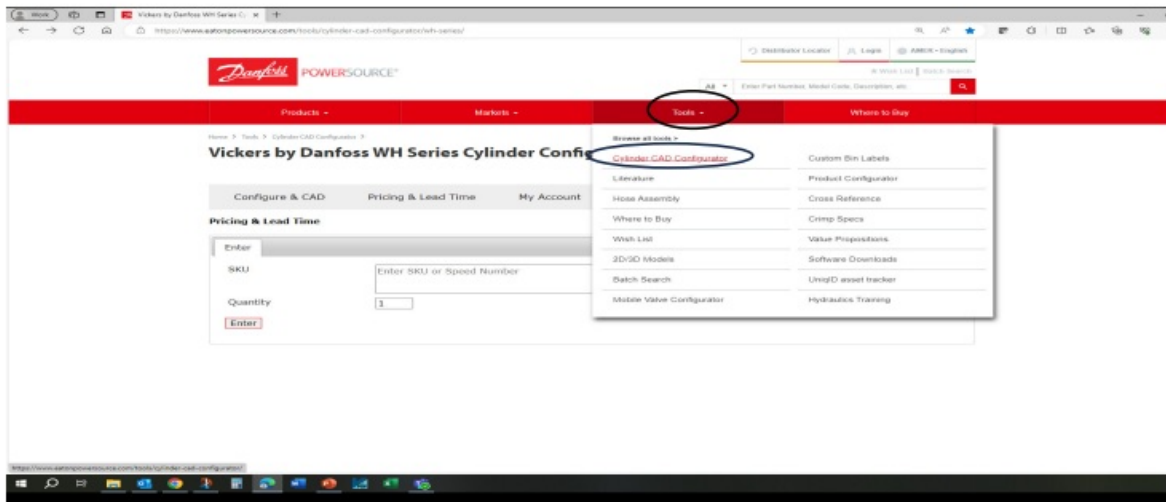
Discount shown will only apply if the order is completed online or the quote is saved through the configurator. Standard discount to be applied otherwise.

[Review >>](#)

1. First section make sure the Sold to information is correct.
2. Ship to information complete.
3. Select type "Quote or Order".
4. PO # added.
5. The shipping company you want to use.
6. Any comments you want to add to the order?
7. Review the order and select Complete if everything is correct.

Online CAD Configurator User Guide-Custom Cylinders

You can build a cylinder with the options you want by hovering over the tools tab and moving the cursor down to the Cylinder CAD Configurator tab. Scroll down to the series you are looking to build.



1. You can put the part number in the search box and select “Find Cylinder”. If the cylinder is found, you will see the information on the right side of the screen.
2. You can also build the cylinder with what you want in the section on the left. As you change selections on the left the information on the right will update in real time.
3. Once you have completed the cylinder to what you want select the Add to Cart button and follow the same instructions as in the previous section.
4. Additional information is available by selecting the black circles with, a brief pop-up up will explain what is available.

Online CAD Configurator User Guide-Accessories

Pricing & Lead Time

1. Put an Accessory part number in the SKU box.
2. Discount will auto-populate when you select enter.
3. Select Enter to see the price of an item.
4. Add to the cart and follow the same instructions in the previous section to complete the purchase.

Pricing & Lead Time

Export Data Sheet

Part Number Configurator

Search by PN Find Cylinder

Part No. NZ01GH5N1KA00100

Series NZ

Bore 3-1/4 Inch

Mounting Styles 01 Side Lug (MS2)

Working Stroke 0.0625 180 Inch

Gross Stroke (Working Stroke) 0.0625 Inch

Info **CAD & Preview** Calculations Calculations Help

Brand: Vickers by Danfoss

Series: AN/53 B93.15/50/PA Interchangeable Hydraulic cylinder

Mounting Style: Side Lug

Bore & Rod Diameter: 3-1/4" Bore, 1-3/8" Rod

Rod End Type: Small Male UN Thd.

Seal Options: Normal

Port Options: Standard NPTF (Not recommended for maximum reliability on new applications)

Port Location: Head: 1 Cap: 1

Cushion Location: Head: - Cap: -

Cylinder Stroke: 0-1/16"

Price Components

Component	Price
Base Price	\$1,064.00
Seal options	\$0.00
Cushions	\$0.00
Stroke	\$21.10
(1" Gross Stroke @ \$21.10)	
Port options	\$0.00
List Price	\$1,085.10

Normally ships in 5 business day(s)

Comment: Optional comment or instructions

Add to Cart

Select CAD & Preview for Specs sheet, same process for all options.

Part Number Configurator

Search by PN Find Cylinder

Part No. NZ01GH5N1KA00100

Series NZ

Bore 3-1/4 Inch

Mounting Styles 01 Side Lug (MS2)

Working Stroke 0.0625 180 Inch

Gross Stroke (Working Stroke + Stop Tube Length) 0.0625 Inch

Rod Position Fully Retracted

Rod Position Stroke 0.0000

Rod Size 1-3/8 Inch

Rod End Type 5 Small Male UN Thd.

Info CAD & Preview **Calculations** Calculations Help

Download CAD Download PDF datasheet

NZ01GH5N1KA00100_ZR00 (PDF)

Download Information Delete

3D Dimension 2D

3D Model View

Select Download for PDF datasheet



Click on Open file

DANFOSS HYDRAULICS NZ01GH5N1KA00100ZR00 (2)...

Open file

Name

Type

NZ01GH5N1KA00100_ZR00.pdf

Adobe Acrobat Document

readme-and-terms-of-use-3d-cad-models.txt

Text Document

Double click pdf file

Vickers® by Danfoss Cylinders

Heavy-Duty Small Bore Series NZ

Danfoss Power Solutions

14615 Lone Oak Road

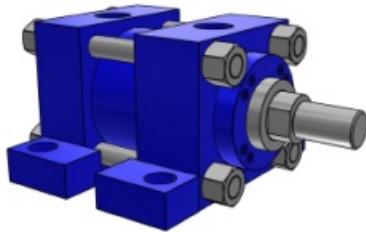
Eden Prairie, MN 55344

USA

Tel: 952-937-9800

www.danfoss.com

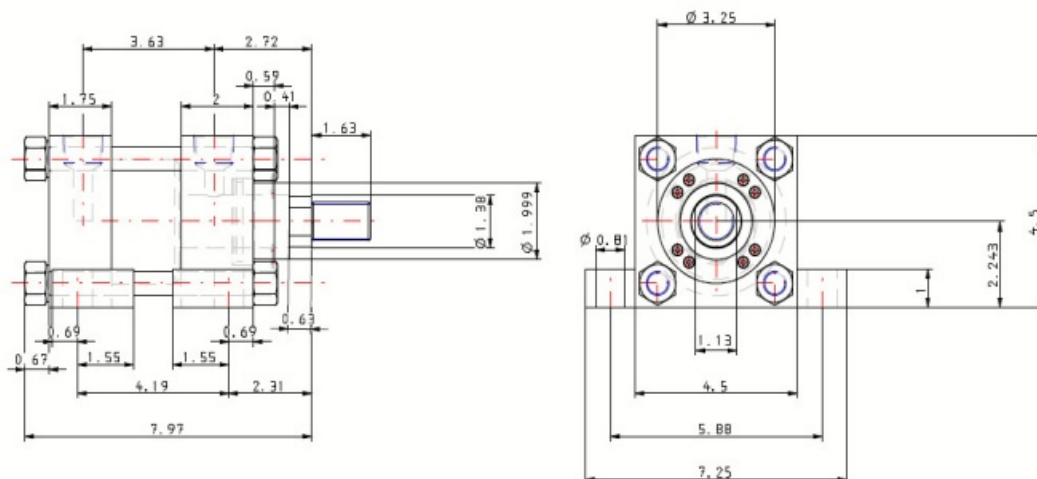
Part Number: NZ01GH5N1KA00100



Series	NZ
Mounting Styles	Side lug (MS2)
Bore (INCH)	3-1/4
Rod Size (INCH)	1-3/8
Working Stroke (INCH)	0.0625
Rod Position	Fully Retracted
Rod Position Stroke (INCH)	0
Extra Rod Projection (INCH)	0
Rod End Type	Small Male UN Thd.
Rod Thread	1-14 INCH
Rod Thread Length	1.63 INCH
Tapped Thread Spec. (INCH)	N/A
Tie Rod Thread Spec. (INCH)	N/A
Seal Options	Normal
Port Options	Standard NPTF
Port Size	3/4 INCH
Port Locations (Head)	1
Port Locations (Cap)	1
Cushion Location (Head)	-
Cushion Location (Cap)	-
Pull Pressure (PSI)	3000
Push Pressure (PSI)	3000

Spec Sheet

Export Data Sheet



THE REPRODUCTION, DISTRIBUTION, AND UTILIZATION OF THIS DOCUMENT AS WELL AS THE COMMUNICATION OF ITS CONTENTS TO OTHERS WITHOUT EXPLICIT AUTHORIZATION IS PROHIBITED. OFFENDERS WILL BE HELD LIABLE FOR THE PAYMENT OF DAMAGES. ALL RIGHTS RESERVED IN THE EVENT OF THE GRANT OF A PATENT, UTILITY MODEL, OR DESIGN. (PER ISO 9001)

Part Position



UNLESS OTHERWISE SPECIFIED

All Dimensions noted in inches unless otherwise specified.
Dimensioning per ANSI Y14.5

Work to dimensions & DO NOT SCALE PRINT

DWG. NO.

DWG. TITLE

CYLINDER ASSEMBLY

NZ01GH5N1KA00100


Drawing

Export Data Sheet

Part No.	NZ01GH5N1KA00100
Series	NZ
Bore	3-1/4 INCH
Mounting Styles	01 Side Lug (MS2)
Working Stroke	0.0625 INCH
Gross Stroke (Working Stroke + Stop Tube Length)	0.0625 INCH
Rod Position	Fully Retracted
Rod Position Stroke	0
Rod Size	1-3/8 INCH
Rod End Type	5 Small Male UN Thd.
Seal Options	Normal
Port Options	Standard NPTF
Port Locations (Head)	1
Port Locations (Cap)	1
Cushion Location (Head)	Without Cushion
Cushion Location (Cap)	Without Cushion
Extra Rod Projection	0 INCH
No. of A/C Flat	Standard Flats
Gland Drain Selection	Without Gland Drain
Gland Drain Location (Head)	N/A
Gland Drain Location (Cap)	N/A
Proximity Switch	Without Proximity Switch
Proximity Switch Location (Head)	N/A
Proximity Switch Location (Cap)	N/A
Air Bleed	Without Air Bleed
Air Bleed Location (Head)	N/A
Air Bleed Location (Cap)	N/A
Note for Side Lug / Side End Lug position 3 (bottom) feature	-
Stop Tube	Without Stop Tube
Stop Tube Length	0 INCH
Stop Tube note	-
Specify XV Dimension (Only Mounting Style NZ15 or NZ34)	0 INCH
Keyed Piston to Rod	Without Keyed Piston to Rod
Rod Material	Standard
Head End Accessories	Without Head End Accessories
Head End Accessory Attachments	N/A
Head End Self Aligning Coupler	Without Self-Aligning Coupler
Head End Rod End Coupling	N/A
Cap End Accessories	N/A
Cap End Accessory Attachments	N/A
Cap End Self Aligning Coupler	N/A
Cap End Rod End Coupling	N/A

- For questions, please contact your CSR. Call 888-258-0222 option #1, option #4
- Danfoss Power Solutions, Nordborgvej 81, 6430 Nordborg, Denmark
- Tel. +45 74 88 22 22, Fax +45 74 65 25 80 www.danfoss.com, E-mail: info@danfoss.com
- Any information, including, but not limited to information on the selection of the product, its application or use, product design, weight, dimensions, capacity, or any other technical data in product manuals, catalog descriptions, advertisements, etc., and whether made available in writing, orally, electronically, online or via download, shall be considered informative and is only binding if and to the extent, explicit reference is made in a quotation or order confirmation.
- Danfoss cannot accept any responsibility for possible errors in catalogs, brochures, videos, and other material. Danfoss reserves the right to alter its products without notice.
- This also applies to products ordered but not delivered provided that such alterations can be made without changes to the form, fit, or function of the product. All trademarks in this material are property of Danfoss A/S or Danfoss group companies. Danfoss and the Danfoss logo are trademarks of Danfoss A/S.
- © 2023 Danfoss. All Rights Reserved
- BC456173863663en-000201

Documents / Resources

	<p>Danfoss Cylinder CAD Configurator [pdf] User Guide Cylinder CAD Configurator, CAD Configurator, Configurator</p>
---	---

References

-  [Engineering Tomorrow | Danfoss](#)
- [User Manual](#)

[Manuals+.](#) [Privacy Policy](#)

This website is an independent publication and is neither affiliated with nor endorsed by any of the trademark owners. The "Bluetooth®" word mark and logos are registered trademarks owned by Bluetooth SIG, Inc. The "Wi-Fi®" word mark and logos are registered trademarks owned by the Wi-Fi Alliance. Any use of these marks on this website does not imply any affiliation with or endorsement.