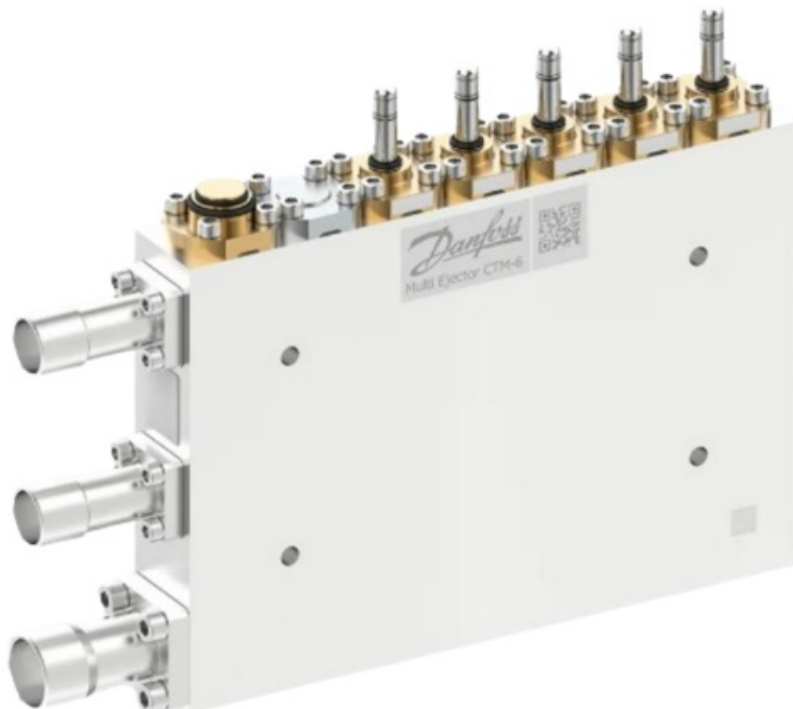


Danfoss CTM 1 Series Multi Ejector and Strainer Installation Guide

[Home](#) » [Danfoss](#) » Danfoss CTM 1 Series Multi Ejector and Strainer Installation Guide 



Installation guide
Multi Ejector (Spareparts)
Type CTM 1, CTM 2, CTM 6

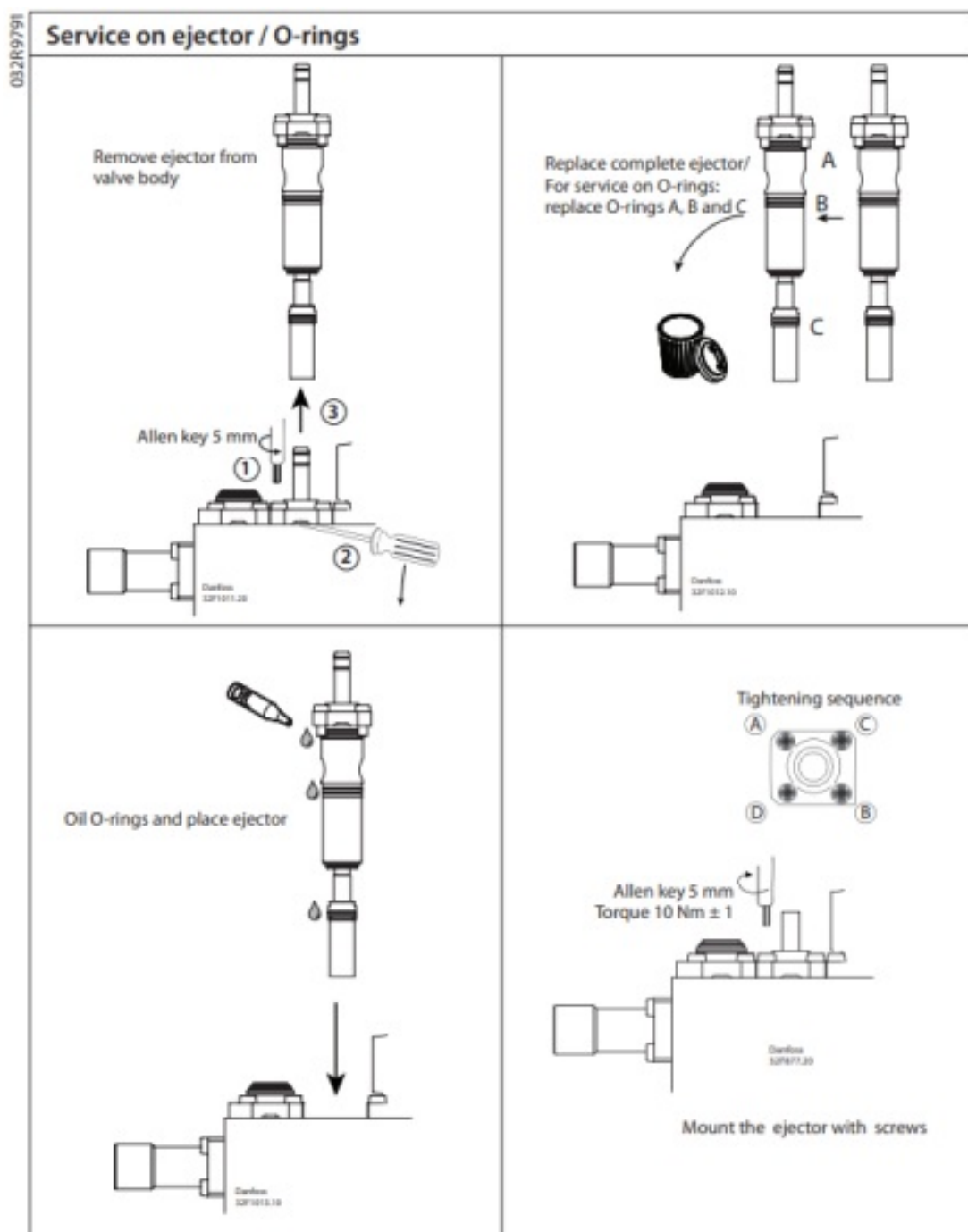
Contents

1 CTM 1 Series Multi Ejector and Strainer

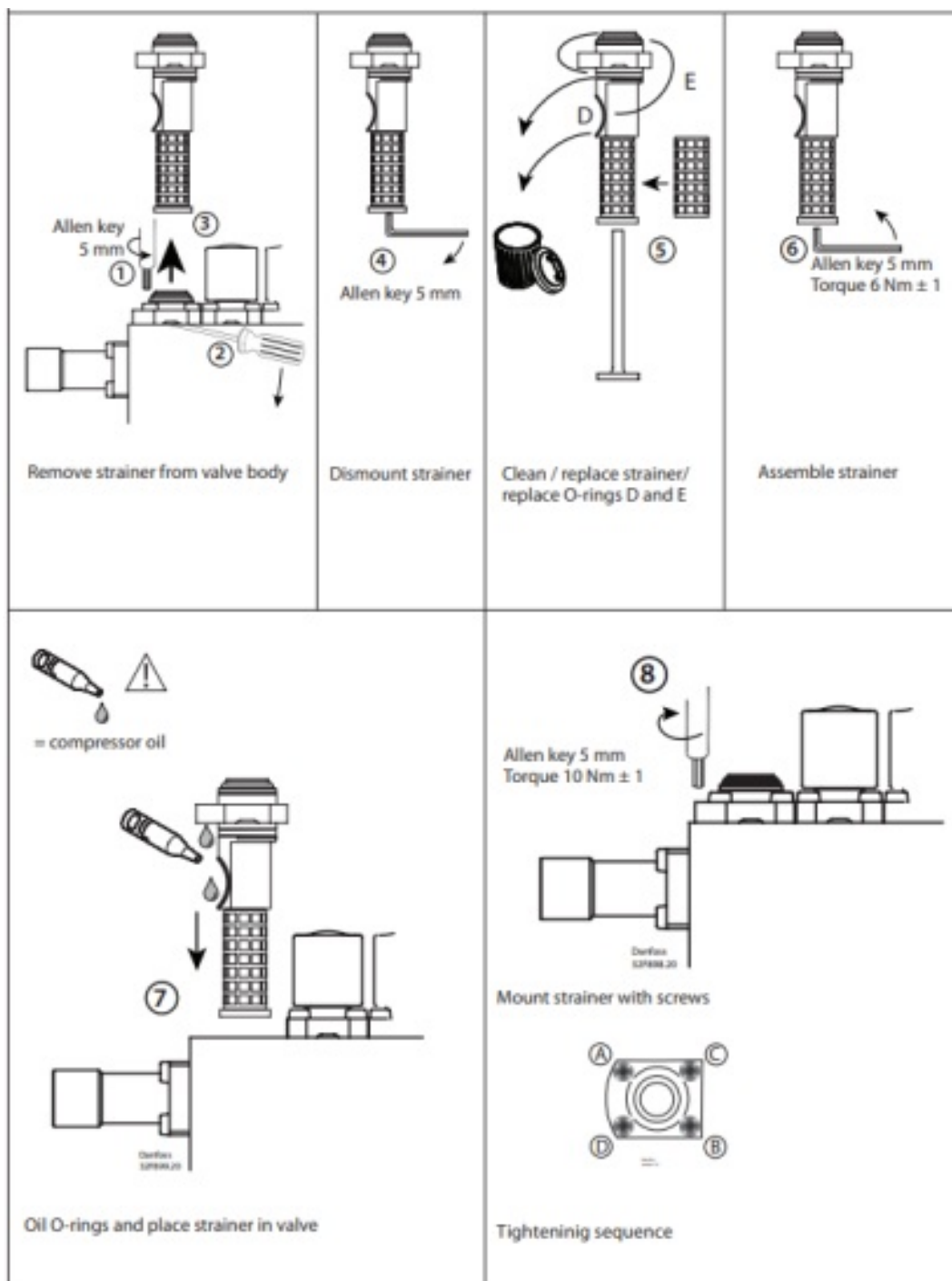
2 Documents / Resources

2.1 References

CTM 1 Series Multi Ejector and Strainer

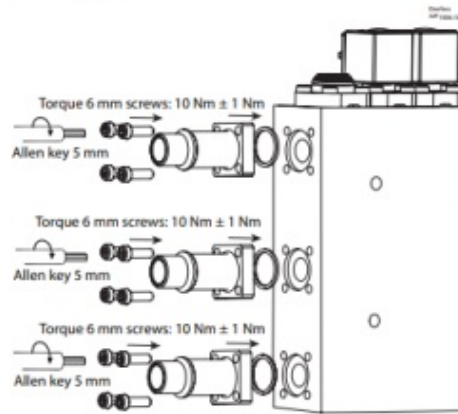


Service on strainer

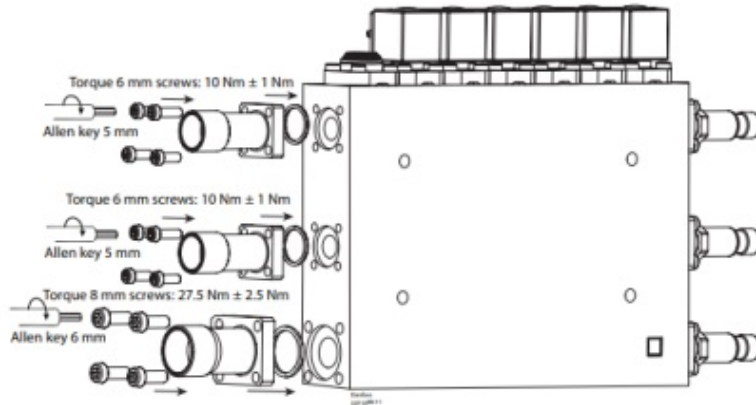


Service on connectors

CTM 1 - CTM 2

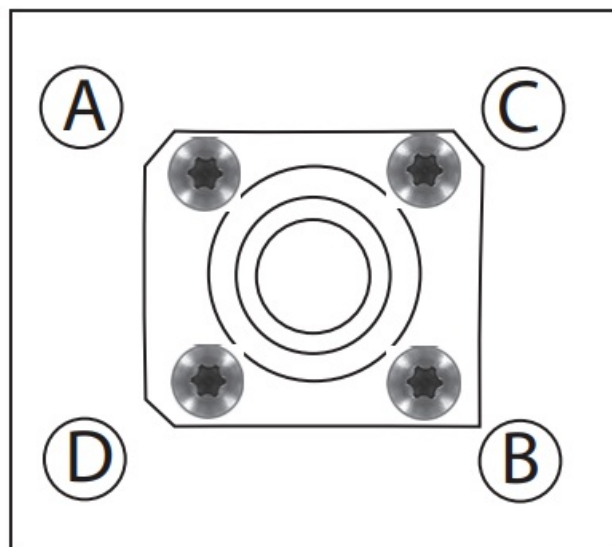


CTM 6



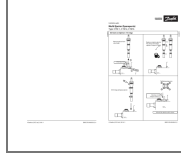
1. Remove connectors with O-rings
2. Replace O-rings and place new connectors
3. Mount new connectors with screws:
 - 6 mm screws torque: $10 \text{ Nm} \pm 1 \text{ Nm}$
 - 8 mm screws torque: $27.5 \text{ Nm} \pm 2.5 \text{ Nm}$

Tightening sequence





Documents / Resources



[Danfoss CTM 1 Series Multi Ejector and Strainer](#) [pdf] Installation Guide
CTM 1, CTM 2, CTM 6, CTM 1 Series Multi Ejector and Strainer, CTM 1 Series, Multi Ejector and Strainer, Ejector and Strainer, Strainer

References

- [User Manual](#)

[Manuals+](#), [Privacy Policy](#)

This website is an independent publication and is neither affiliated with nor endorsed by any of the trademark owners. The "Bluetooth®" word mark and logos are registered trademarks owned by Bluetooth SIG, Inc. The "Wi-Fi®" word mark and logos are registered trademarks owned by the Wi-Fi Alliance. Any use of these marks on this website does not imply any affiliation with or endorsement.