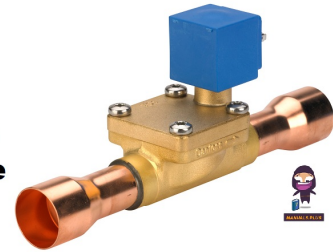


Danfoss
**CSV 2, CSV 22
Solenoid Valve**



Danfoss CSV 2, CSV 22 Solenoid Valve Installation Guide

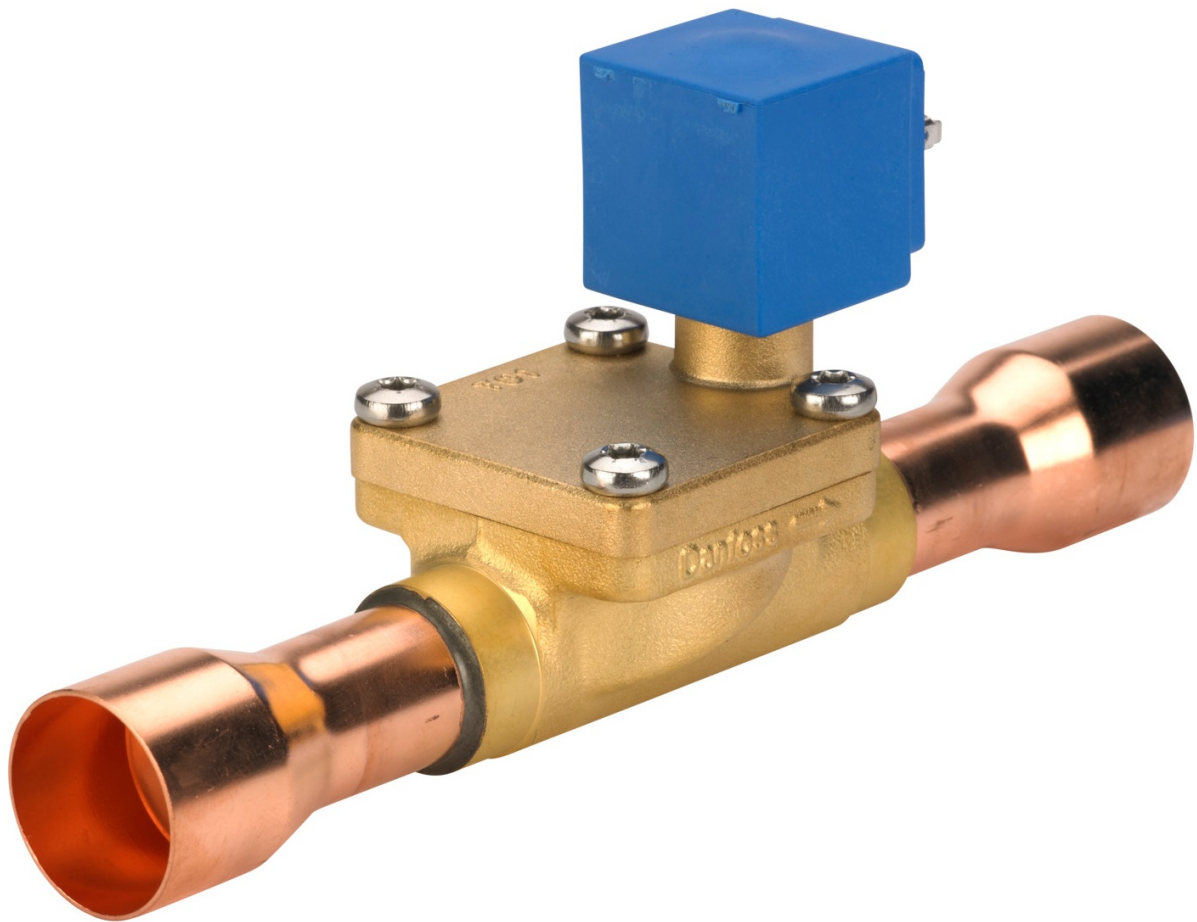
[Home](#) » [Danfoss](#) » Danfoss CSV 2, CSV 22 Solenoid Valve Installation Guide 

Contents

- [1 Danfoss CSV 2, CSV 22 Solenoid Valve](#)
- [2 Refrigerants](#)
- [3 Mounting angle](#)
- [4 Documents / Resources](#)
 - [4.1 References](#)

Danfoss

Danfoss CSV 2, CSV 22 Solenoid Valve



Solenoid valve

- Types CSV 2 – CSV 22 (NC)

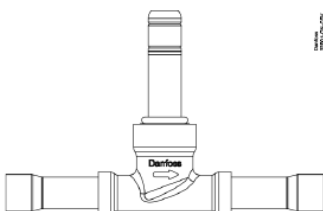
Refrigerants

- R22, R134a, R404A, R507, R407C, R513A, R452A, R600, R600a, R1234ze and R290.
- For other refrigerants, contact Danfoss.

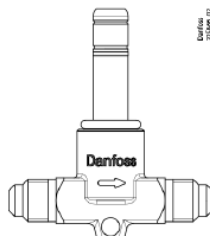
Note: Please follow the specific selection criteria stated in the data sheet for these particular refrigerants.

- **Max. working pressure:** PS / MWP: 35 bar / 508 psig
- **Max. operation pressure differential (MOPD):** Coil dependent
- **Medium temperature:** -40 – 105 °C / -40 – 221 °F
- **Ambient temperature:** -20 – 55 °C / -4 – 131 °F

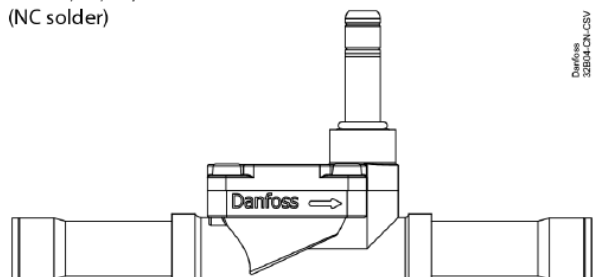
CSV 2, 3, 6
(NC solder)



CSV 2,3,6
(NC flare)



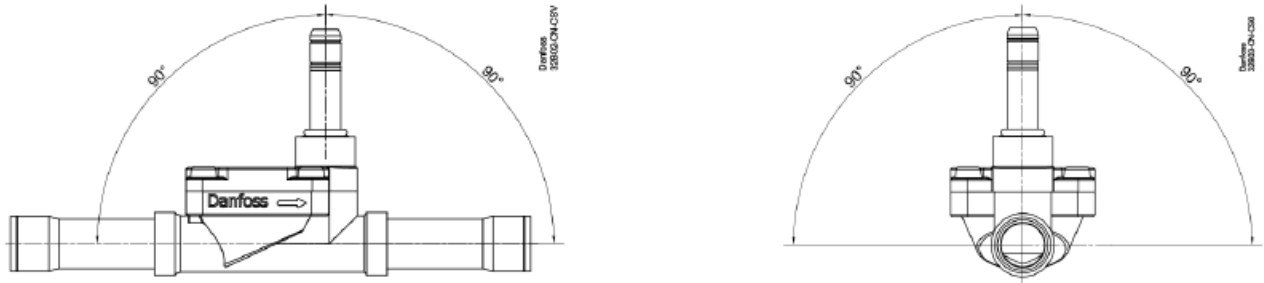
CSV 10, 15, 20, 22
(NC solder)



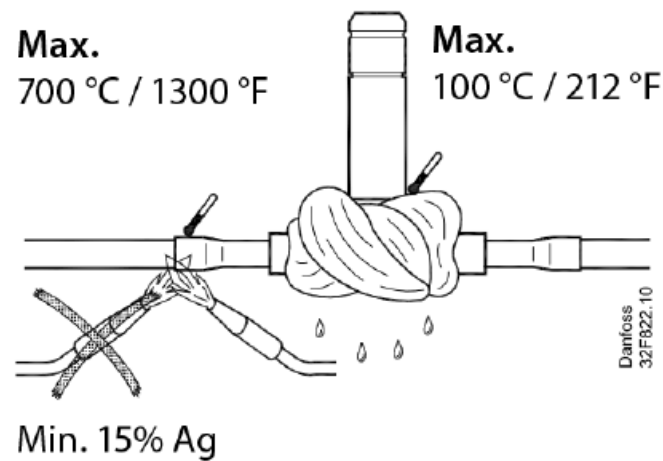
Danfoss
58104 DN CSV

- For CSV 3 and CSV 6 type valves, Danfoss recommends that a suitable filter or filter drier (max. size of 40 – 50 μm) is installed ahead of each solenoid valve to keep scale, solder material and other foreign dirt and particles out of the valve

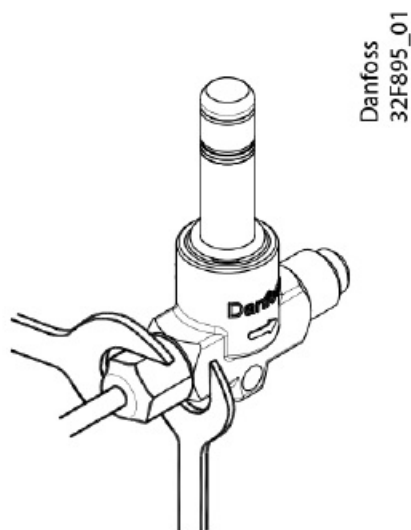
Mounting angle



Soldering



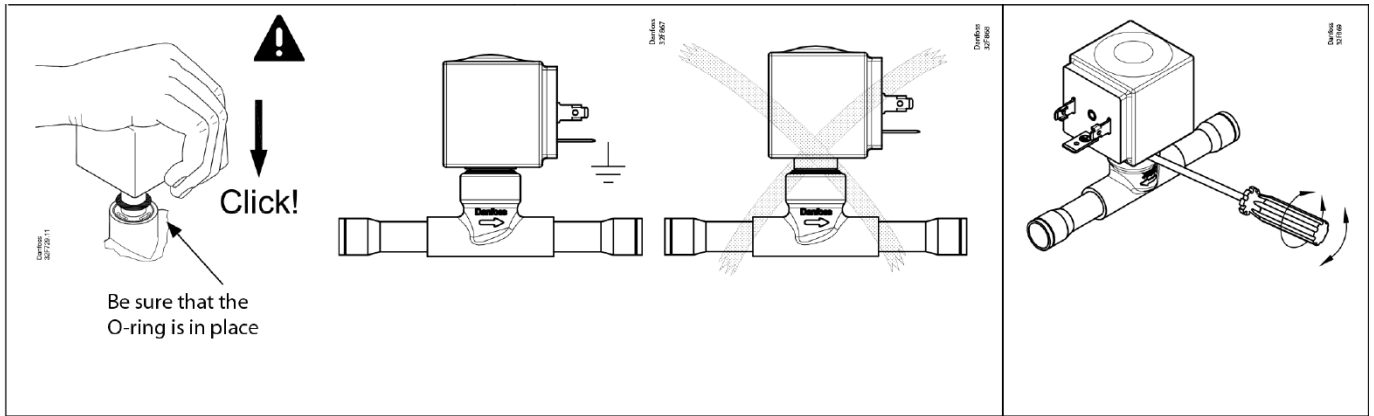
Flare



Warning

- Always disconnect power from the coil when dismantled from the valve.

- The coil may be damaged and there is a risk of injuries and burns.



- To ensure correct sealing between the coil and valve, mount the coil in the proper position and make sure that the coil is fully clicked on to the valve.

© Danfoss | DCS (sb) | 2020.10
 AN34705422346901-000201 | 1 ugov.ua



Documents / Resources

	<p>Danfoss CSV 2, CSV 22 Solenoid Valve [pdf] Installation Guide CSV 2, CSV 3, CSV 6, CSV 22, CSV 2 CSV 22 Solenoid Valve, CSV 2 CSV 22, Solenoid Valve, Valve</p>
--	-------------------------------------------------------------------------------------------------------------------------------------------------------------------------------------------------

References

- [User Manual](#)

[Manuals+](#), [Privacy Policy](#)

This website is an independent publication and is neither affiliated with nor endorsed by any of the trademark owners. The "Bluetooth®" word mark and logos are registered trademarks owned by Bluetooth SIG, Inc. The "Wi-Fi®" word mark and logos are registered trademarks owned by the Wi-Fi Alliance. Any use of these marks on this website does not imply any affiliation with or endorsement.