



# Danfoss AK-ST 500 Software for AK Controller User Guide

[Home](#) » [Danfoss](#) » Danfoss AK-ST 500 Software for AK Controller User Guide 

## Contents

- 1 [Danfoss AK-ST 500 Software for AK Controller](#)
- 2 [Product Information](#)
- 3 [Product Usage Instructions](#)
- 4 [Frequently Asked Questions](#)
- 5 [Introduction](#)
- 6 [Principle](#)
- 7 [Prior to installation](#)
- 8 [How to install the programme](#)
- 9 [Before you start the programme](#)
- 10 [How to start the programme](#)
- 11 [General navigation](#)
- 12 [Configuration of a controller](#)
- 13 [Authorisation of users](#)
- 14 [Alarms](#)
- 15 [Log function](#)
- 16 [Connection to an external system](#)
- 17 [Backup](#)
- 18 [Offline settings](#)
- 19 [Languages](#)
- 20 [Customer defined texts](#)
- 21 [Plant overview](#)
- 22 [Upgrade Device](#)
- 23 [Documents / Resources](#)
  - 23.1 [References](#)
- 24 [Related Posts](#)



# Danfoss AK-ST 500 Software for AK Controller



## Product Information

### Specifications

- Product Name: Service tool AK-ST 500
- SW Ver.: 4.3
- Software for operation of AK controller
- PC Requirements:
  - 2.4 GHz Processor
  - 2 GB RAM
  - 80 GB Harddisk
  - USB or serial port
- Software Requirements: Windows 10 & 11, 64 bit
- Cable: Order number 080Z0261 or 080Z0262

## Product Usage Instructions

### Prior to Installation

Ensure your PC meets the specified requirements and have the necessary cables ready for connecting the AK controller.

### Installation Process

1. Uninstall any previous versions of the software.
2. Download the installer file from the provided link.
3. Run the installation file and follow on-screen instructions.

4. Configure the program as needed after installation.

## **Starting the Programme**

1. Connect the controller to the PC or network via the System Manager.
2. Switch on the controller if not already on.
3. Navigate to the Service Tool application in the ADAP-KOOL folder.
4. Select the appropriate connection type (e.g., Direct, modem, TCP/IP).

## **Frequently Asked Questions**

### **Q: How do I change the language settings on the AK controller?**

A: The selected language on the controllers will be dominant. If not available, English will be displayed. Custom language settings can be configured within the program.

### **Q: How do I save settings for connected controllers?**

A: The Service Tool will automatically read and save setting limits for the controllers you connect to. The upload process may take some time.

## **Introduction**

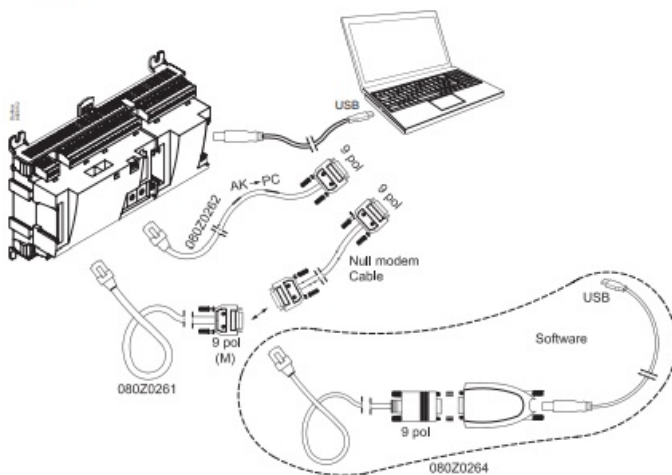
- AK Service Tool is a tool for operating ADAP-KOOL® refrigeration controllers in a network. Some AK controllers have a plug for direct connection to the Service Tool. All controllers that are connected to SM720/SM350 and advanced Pack/Case controllers (AK2 family) connected to SM8xx(A) unit can be operated through Service Tool. Individual controllers contain information about the presentation of settings and measured values. This information is read by the Service Tool the first time it registers a controller of this type. This information is saved in the Service Tool so that start-up is faster on subsequent occasions.
- In this booklet you are given a brief explanation of the possibilities offered to you by ADAP-KOOL® Refrigeration controllers, both in daily use and in connection with service calls. The aim is that you are to become familiarised with screen displays and navigation principles on a general level – so we will not give you an in-depth description of individual system types or applications.
- When you have read the booklet you will be able to derive full benefit of AK-ST 500 as a control and service tool in your refrigerating plant.
- Note: this User Guide is a general introduction to the AK Service Tool. Each controller for a specific system will furthermore be provided with a separate manual.

## **Principle**

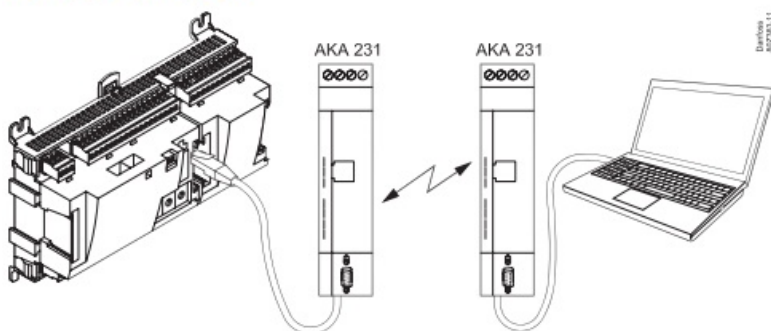
The AK controller is connected to the PC where the programme is installed. All settings are subsequently made via Windows menus.

### **Direct**

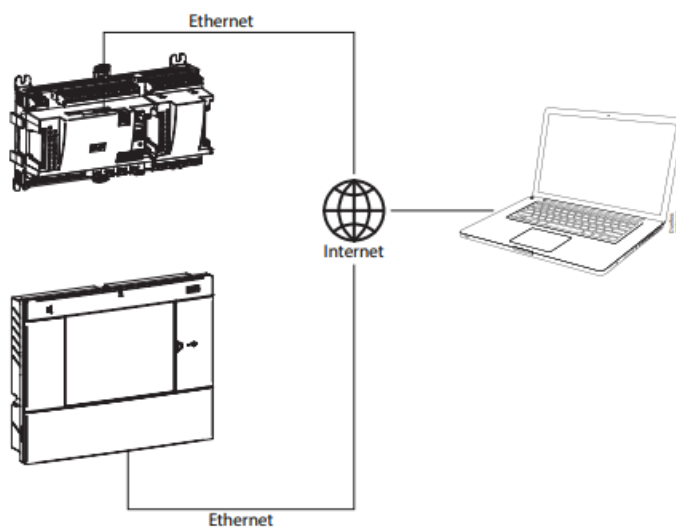
## Direct



## Remote via modem



## Remote via TCP/IP



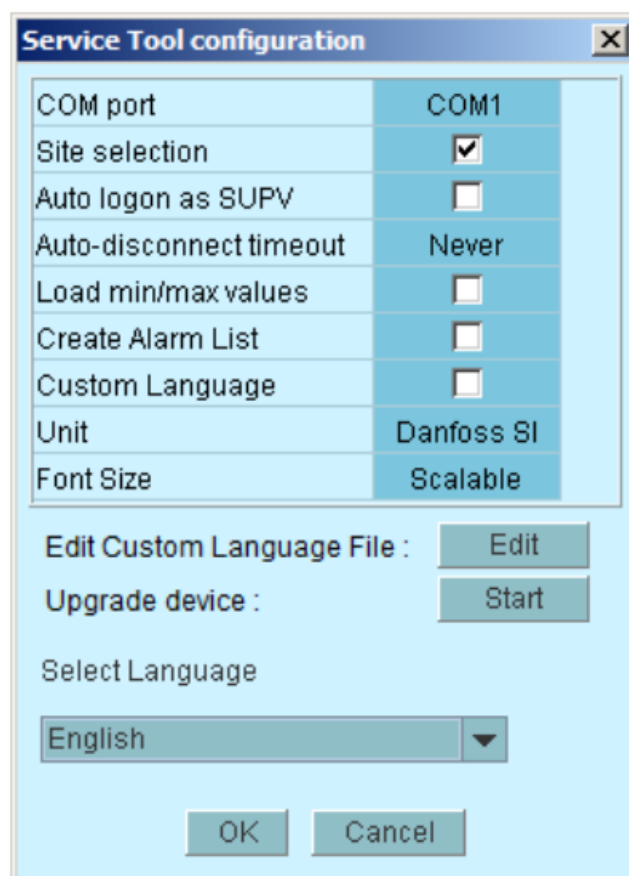
## Prior to installation

- Pc requirements:  
2.4 GHz Processor, USB, USB+converter1) or serial port 2 GB RAM, 80 GB Harddisk
- Software requirements:  
Windows 10 & 11, 64 bit
- **Cable:**
  - Cable for connection of AK controller.
  - Order number: 080Z0261 or 080Z0262.
  - Standard USB cable with a male type-B connector on one end.

- See the illustrations on previous page.
- If a longer cable is required between the controller and the PC a standard RS 232 extension cable can be inserted. The distance between controller and PC must however not exceed 15 m.
- 1) Converter: Order no. = 080Z0264

## How to install the programme

1. In case a previous version is present, please uninstall it before installing the new one. After Uninstalling, the existing directory of old version of AK-ST 500 installed before will still be present. Do not delete or remove the folder and its contents. It should be left the same.
2. Download the installer file from: <https://www.danfoss.com/en/service-and-support/downloads/dcs/adap-kool-software/ak-st-500/>
3. Run the installation file. Follow the instructions on the screen
4. After the installation a configuration of the program must be made. This can always be changed/started by opening ST-500 via the “Configuration” shortcut created during installation.



- COM port: Indicate the COM port to be used for the direct connection.  
When using USB, make sure that the physical connection is already made, before Service Tool is started, in order to detect the right COM port.
- Site selection: If you want the option of connecting to the system via a modem or TCP/IP, this must be selected. This means that "site selection" will appear so that you can select system.
- Auto login as SUPV: Select this option if you want automatic login with the "SUPV" user profile.
- Auto disconnect: Service Tool closes automatically if idle for the set time.
- Load min/max values: Should only be selected if you expect to use offline programming. The Service Tool will read and save setting limits for the controllers you connects to.

Note that the upload process may take a while.

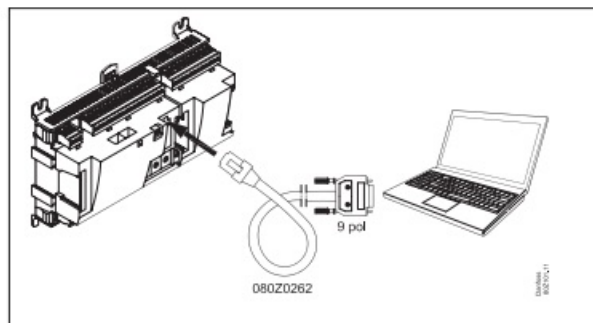
- Create alarm list: Generates an alarm list for later use. Name = Alarms.XML
- Custom Language: By marking this function, the program will use texts that are written in the file "Custom Language". See later on in the text.
- Unit: Select unit
  - SI : Bar (Absolute) and °C
  - US : PSI and °F
  - Danfoss SI : Bar (Gauge) and °C
- Font size: Choose size or let it be scalable
- Edit Custom Language file: This function gives you access to change texts for selected functions. Read more on page 13.
- Upgrade device: Use only if the software in the connected controller needs to be updated. Read more on page 15.
- Select language: Must be set for the language you wish to use.

If the controllers contain the selected language, this language will be dominant on the operating controllers. If not, English will be shown.

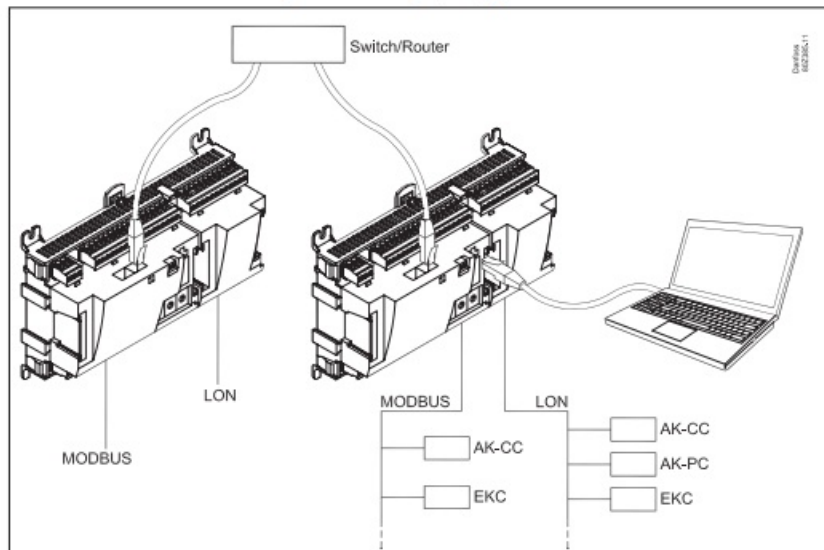
## Before you start the programme

1. Connect controller and PC
2. Switch on the controller if it is not already switched on.

### 1. Connect controller and PC



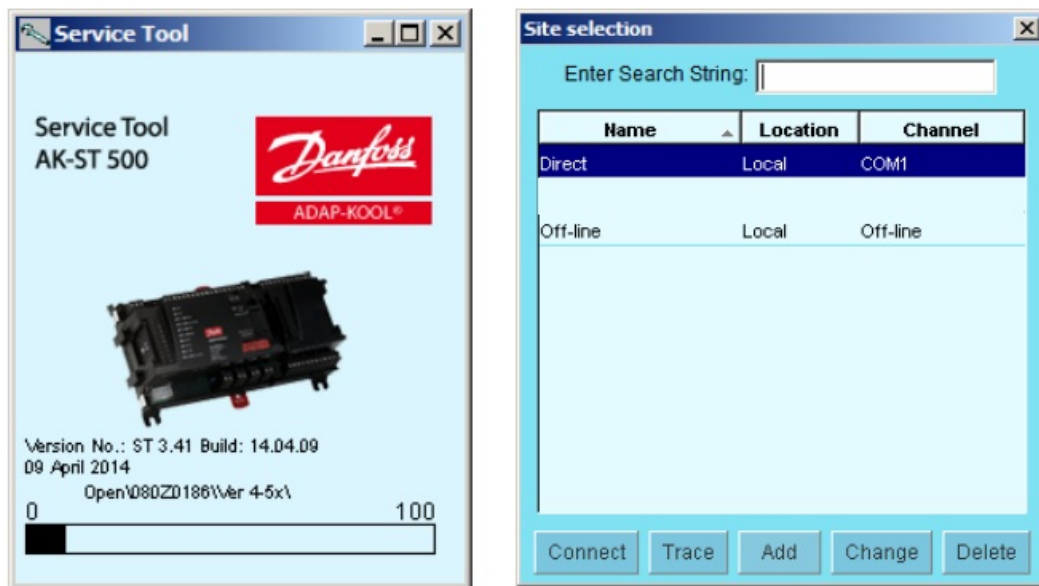
Or to the network via the System Manager, if applicable.



### 2. Switch on the controller if it is not already switched on.

## How to start the programme

1. Via the Start menu move to "Service Tool" (In the PC the application is found in the "ADAP-KOOL" folder)



2. Select "Direct" when the PC is connected directly to a controller.

(Later there may be several lines where you can select connections to other systems, e.g. via modem or TCP/IP connection.)

3. Press "Connect"

When the programme encounters a new controller for the first time, a file will be downloaded to the PC. This transaction will take a couple of minutes. You can follow the transfer on the bar at the bottom of the screen.

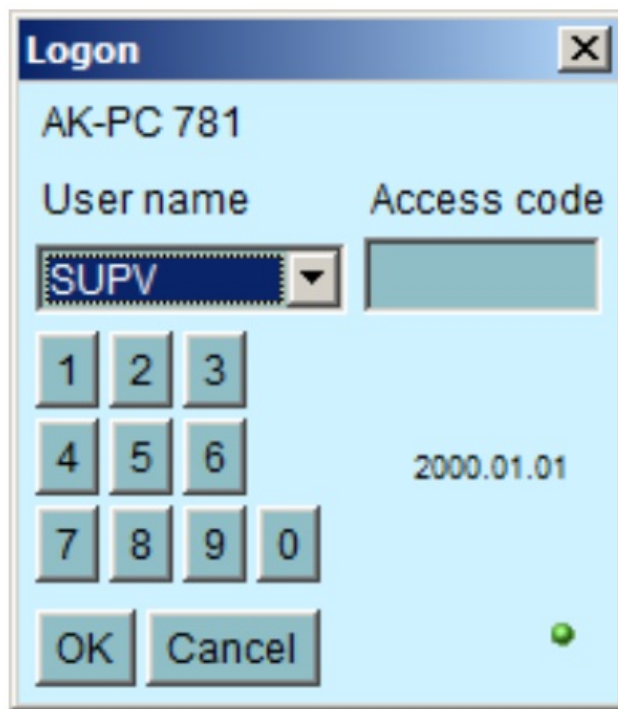
4. Logon

The various user levels range from "seeing only" to carrying out installation and setup of the plant. There is an overview in Chapter 9.

The user name with the greatest powers is from the "SUPV" profile (super user).

In case you haven't selected to "Logon as SUPV" in the Configuration menu, please select the user profile when connected to the controller.

The first time you start the programme, use the "123" passcode. This code has been put in by the factory and can be used on all user levels until it is changed.



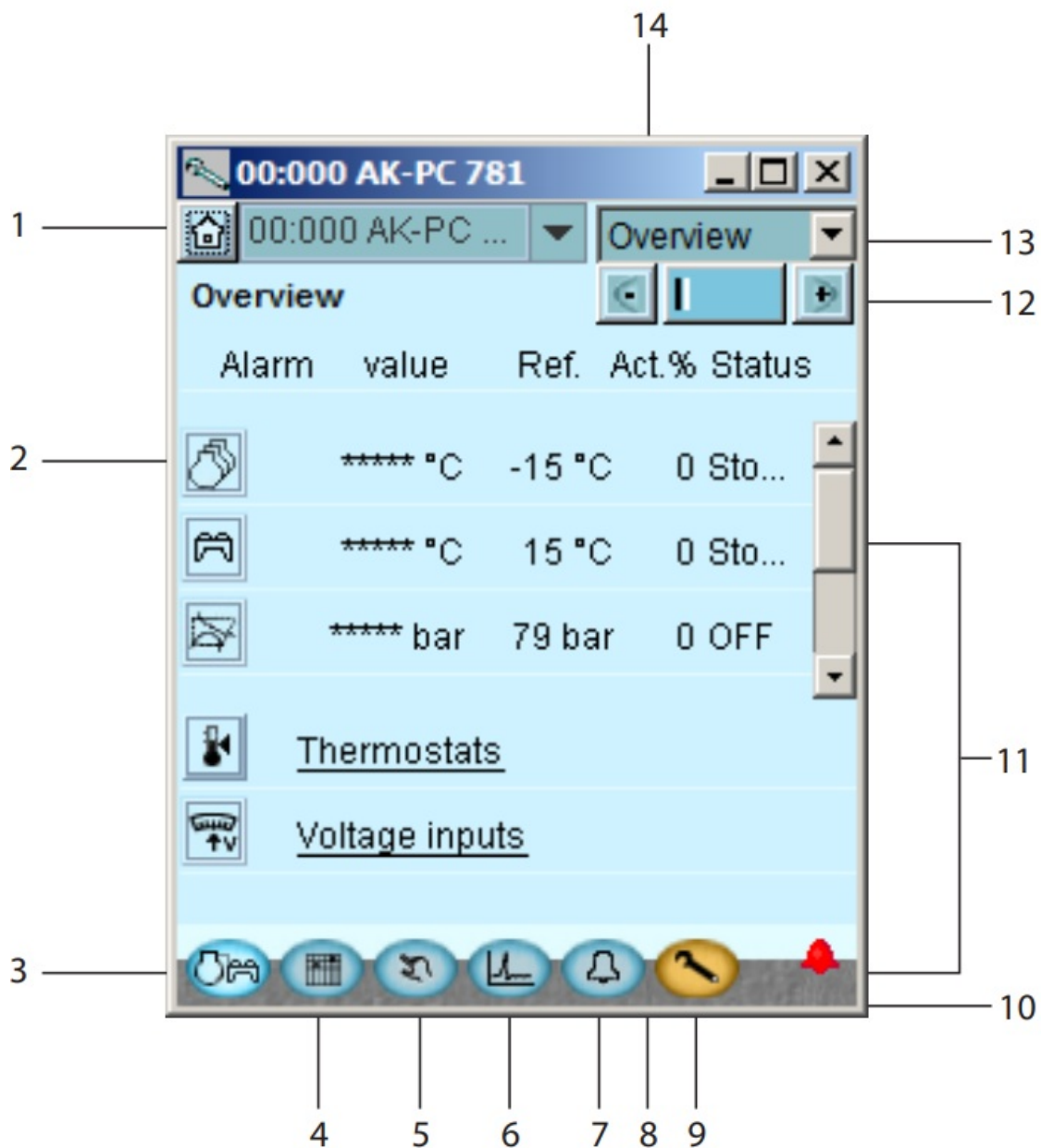
A screenshot of a 'Logon' dialog box. The title bar is blue with the text 'Logon' and a close button. The main area is light blue. At the top, it says 'AK-PC 781'. Below that, there are two labels: 'User name' and 'Access code'. Under 'User name' is a dropdown menu showing 'SUPV'. Under 'Access code' is an empty text box. Below these is a numeric keypad with buttons for digits 1 through 0. To the right of the keypad, the date '2000.01.01' is displayed. At the bottom left are 'OK' and 'Cancel' buttons. At the bottom right is a small green dot.

Note: when you are in contact with the controller it is the relevant controller's data and setting options that have to be operated. They are described in separate manuals.

### **General navigation**

Here you will get an impression of what a controller's control panel looks like. The icons vary according to the controller switched on. But generally the operating blocks are as shown here:





## 1. Communication and system functions

You have the following options:

1. Disconnecting
2. Changing user profile
3. Viewing communication log
4. Update group name (see page 14)

### And if you are connected to a System Manager:

1. Backing up all units on the network
2. Copying set-up from a file to a unit
3. Printing settings for all or selected units on the network
4. Network overview

## 2. One of the controllers functions

Each key gives access to data concerning the regulation and possibility of adjusting it. When you have received the required information/adjusted the parameters, you can click your way down to another level and obtain a similar access.

For a System Manager like the SM720 or SM350 you will see the network list of the connected products.

However, for the SM8xx(A) unit you will only see the advanced controllers like e.g. PC 7xx.

### 3. **Back to survey**

The key at the button left takes you right back to the shown overview display.

### 4. **Day/night schedule**

Here you can read and set the individual controller's operating performance on a weekly basis. You can also consider deviations in connection with Sundays and holidays.

### 5. **Manual operation**

Here you start and stop the automatic regulation.

### 6. **Log function**

Here you obtain an overview of the operation viewed from two angles:

- Historically: what has transpired in a given period for selected parameters.
- Trends: shows how the plant is operating here and now – useful data, for example, for tuning of the system to energy-optimal operation or change of application.

### 7. **Alarms**

Here you have a list of active and cancelled alarms, respectively. See also page 9.

### 8. **System unit only**

Setting for plant controls (Master control functions)

### 9. **Configuration**

Gives you access to the configuration element – See page 8.

### 10. **Communication**

When you are logged on, a green "lamp" indicates that you are online with the controller. If this for some reason is not the case, the lamp will be red. A yellow lamp indicates that AK2 is trying to establish the connection.

When an alarm bell is shown, there is an active alarm on the actual controller.

### 11. **Alarm bell**

Shows that there is an active alarm that needs handling.

Asterisks (\*\*\*) at a measurement indicates that the signal is defective.

### 12. **Page navigation**

When you reach the underlying pages to the overview display you will in many cases encounter a page navigation option: +/- keys where you can change page when the settings are divided up on several parallel pages (the page you are on is marked with a dark column among the light ones).

### 13. **Regulation navigation**

Having selected a controller you can via the "drop down" select from which part of the regulating range you wish to download/adjust data.

### 14. **Network address**

Here you can see the controller's address and name on the network.

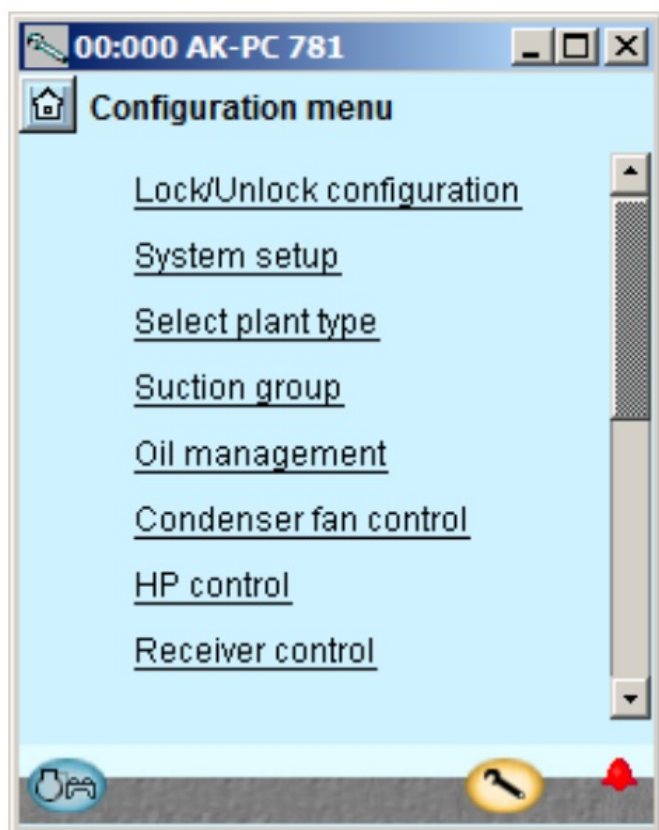
You can also connect to one of the other controllers on the network.

## **Configuration of a controller**

### **Screw spanner**

Via the function key to the extreme right (with screw spanner icon) you leave the Daily User section of the controller. Instead you now move into the Service User section reserved for installers/ service engineers who either have to configure a controller or carry out basic changes of the existing configuration.

The "screw spanner" leads you to a menu with regulation-specific items for configuration of the application to be controlled.



The number of menu items will adapt itself to the application, so that only the relevant menus are visible.

The following items of the menu are always shown, whatever the plant type:

- **Lock/unlock configuration**

Here you lock important settings so that the setup will not be changed by a mistake. Unlock if you want to change in the configuration.

- **System setup**

Here you set the clock and name the controller.

- **Select plant type**

Here you find all the functions and setups that define the plant. There are usually several input angles to the different regulating functions.

- **I/O configuration**

With this function you define the signals there have to be on the different inputs and outputs.

- **I/O status and manual**

Here you can see status and values of the individual inputs and you can carry out manual override of the output signals.

### **Authorisation**

Here users and passwords are defined. The factory settings are as follows:

| Profile | User       | Read | Write         | Password |
|---------|------------|------|---------------|----------|
| Dail    | Daily      | All  | No            | 123      |
| Serv    | Service    | All  | Adjust values | 123      |
| Supv    | Super user | All  | All           | 123      |

### **Backup/restore**

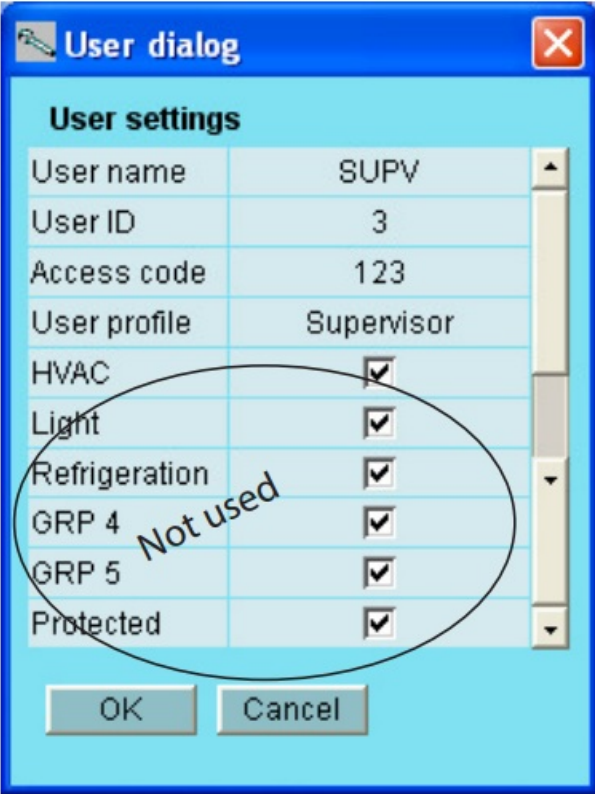
Enables you to make a backup of a controller's settings, either with a view to transferring them from a replaced controller to a new one or to making "copy paste" of a controller's settings to new/other controllers with the same code number and software version.

## Authorisation of users

New users are established here and existing users can change their access code. To get access to the menu you must be logged on as super user. Only with this user type can you authorise other users and change their access codes.

### You can establish four different profiles:

- Default (DFLT). Lowest level which only displays elementary operating data.
- Daily user (DAIL). Second lowest. Typically for the person responsible for refrigeration in a shop. He/she can read alarms and set operating data and cancel alarms.
- Service user (SERV). An installer/service engineer who partly installs and runs in the plant, partly performs more radical settings/adjustments, overriding the automatic controls in connection with a service call.
- Super user (SUPV). A plant builder/person responsible for monitoring of it with top-level responsibility. He/she has as the only one the right to authorise other users.
- Start by becoming authorised for configuration. You do this by selecting "Supervisor" in the log-in display followed by an access code. You can now set up/authorise new users.



The screenshot shows a 'User dialog' window with a title bar containing a key icon and a close button. The window has a light blue background and a table titled 'User settings'. The table has two columns: the first column lists user attributes, and the second column shows their values. The attributes and values are: User name (SUPV), User ID (3), Access code (123), User profile (Supervisor), HVAC (checked), Light (checked), Refrigeration (checked), GRP 4 (checked), GRP 5 (checked), and Protected (checked). A black oval is drawn around the rows from 'Refrigeration' to 'Protected', with the text 'Not used' written diagonally across it. At the bottom of the window are 'OK' and 'Cancel' buttons.

| User settings |                                     |
|---------------|-------------------------------------|
| User name     | SUPV                                |
| User ID       | 3                                   |
| Access code   | 123                                 |
| User profile  | Supervisor                          |
| HVAC          | <input checked="" type="checkbox"/> |
| Light         | <input checked="" type="checkbox"/> |
| Refrigeration | <input checked="" type="checkbox"/> |
| GRP 4         | <input checked="" type="checkbox"/> |
| GRP 5         | <input checked="" type="checkbox"/> |
| Protected     | <input checked="" type="checkbox"/> |

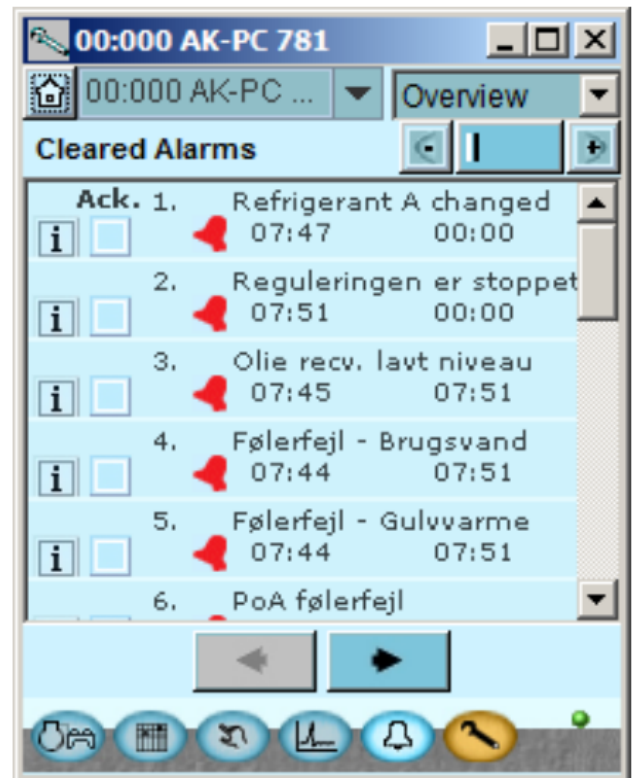
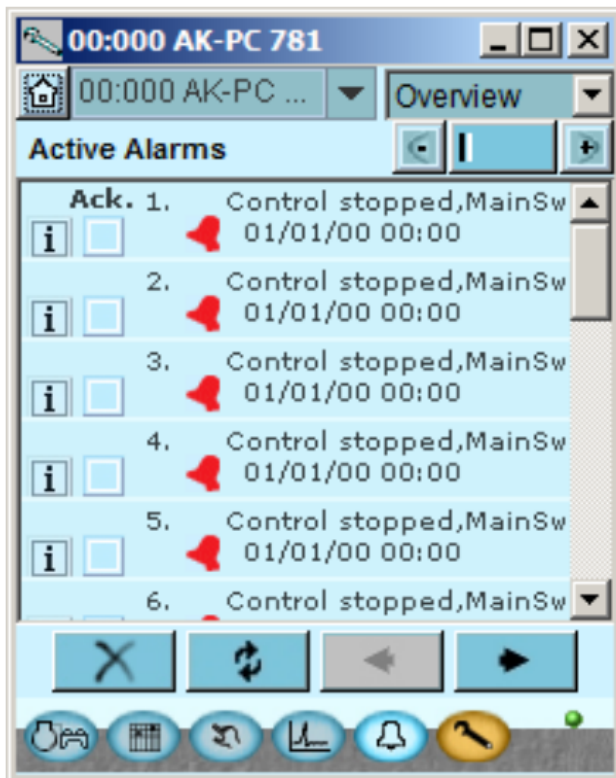
## Procedure

1. Give the user a short "name" of max. four characters
2. Supplement with an ID number which is not known/used already
3. Write an access code (a number) which is not higher than 9999
4. Assign the required profile to the new user




5. If it is a large plant and the user needs access to, say, heating and ventilation, the final field must also be checked.
6. Finish with OK.

## Alarms

The two alarm displays show the active alarms and earlier alarms, respectively. If you want to know more about one of the alarms you can click on the alarm and in this way download an info display on the screen. If you wish to confirm that you have seen an alarm, you can check it in the square field. Remember that the error may still be there and has to be corrected.

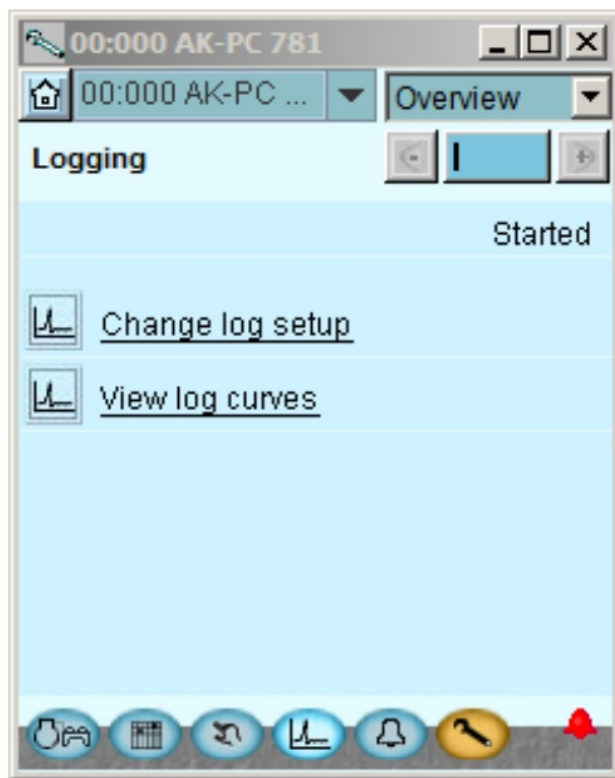


The four keys have the following functions:

-  With the first key you sort out the alarms, so that only the active ones will remain.
-  The second key will update the display (checks whether more alarms have been added while the display was shown).
-  With the third and fourth keys you can turn over the pages with alarms. Each page represents 20 alarms.

## Log function

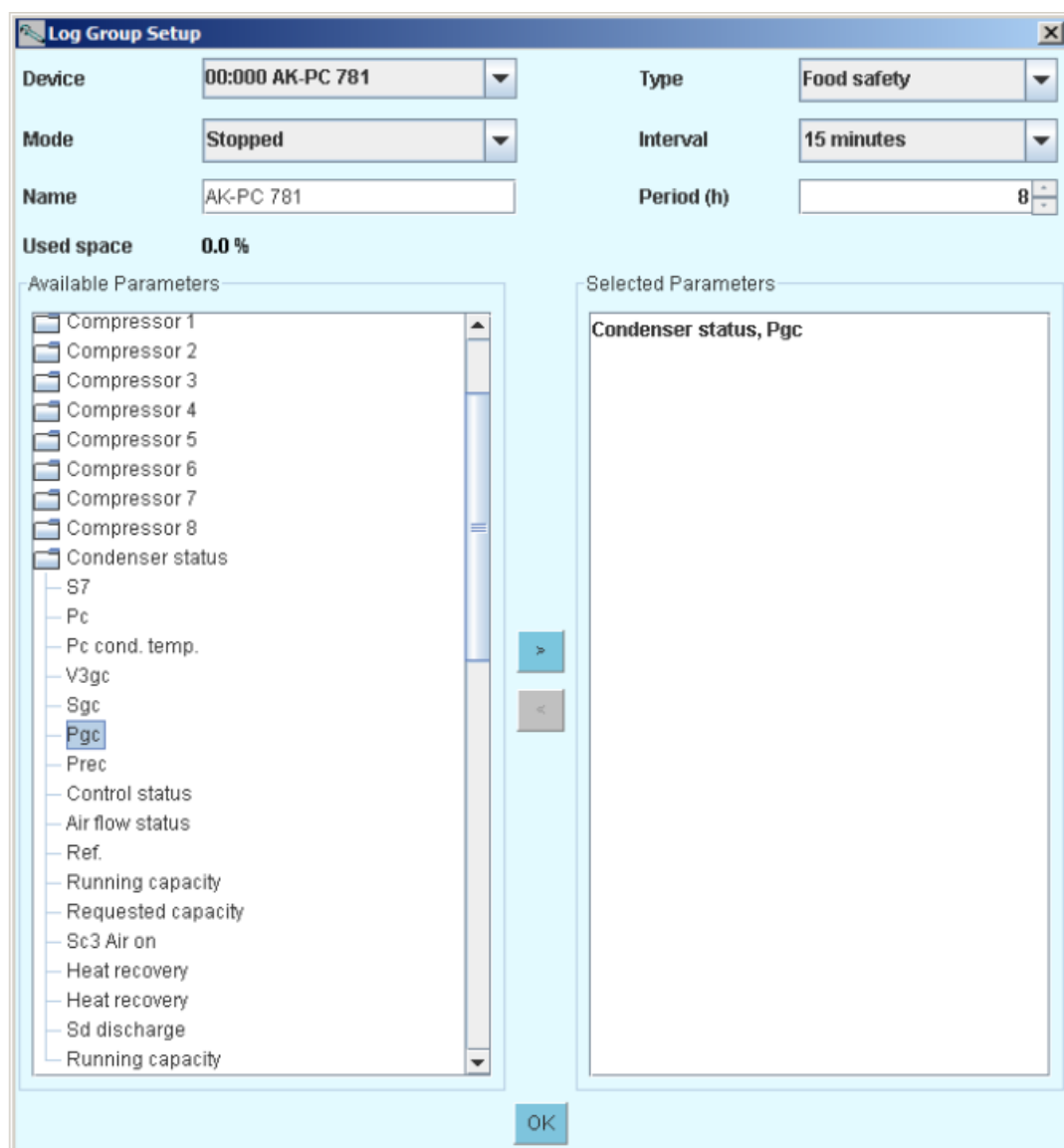
Here you can collect measured values and have them presented as curves.



Measurements are defined here.

Graphics are shown and defined here.

Definition of measurements. Here is Pgc selected.



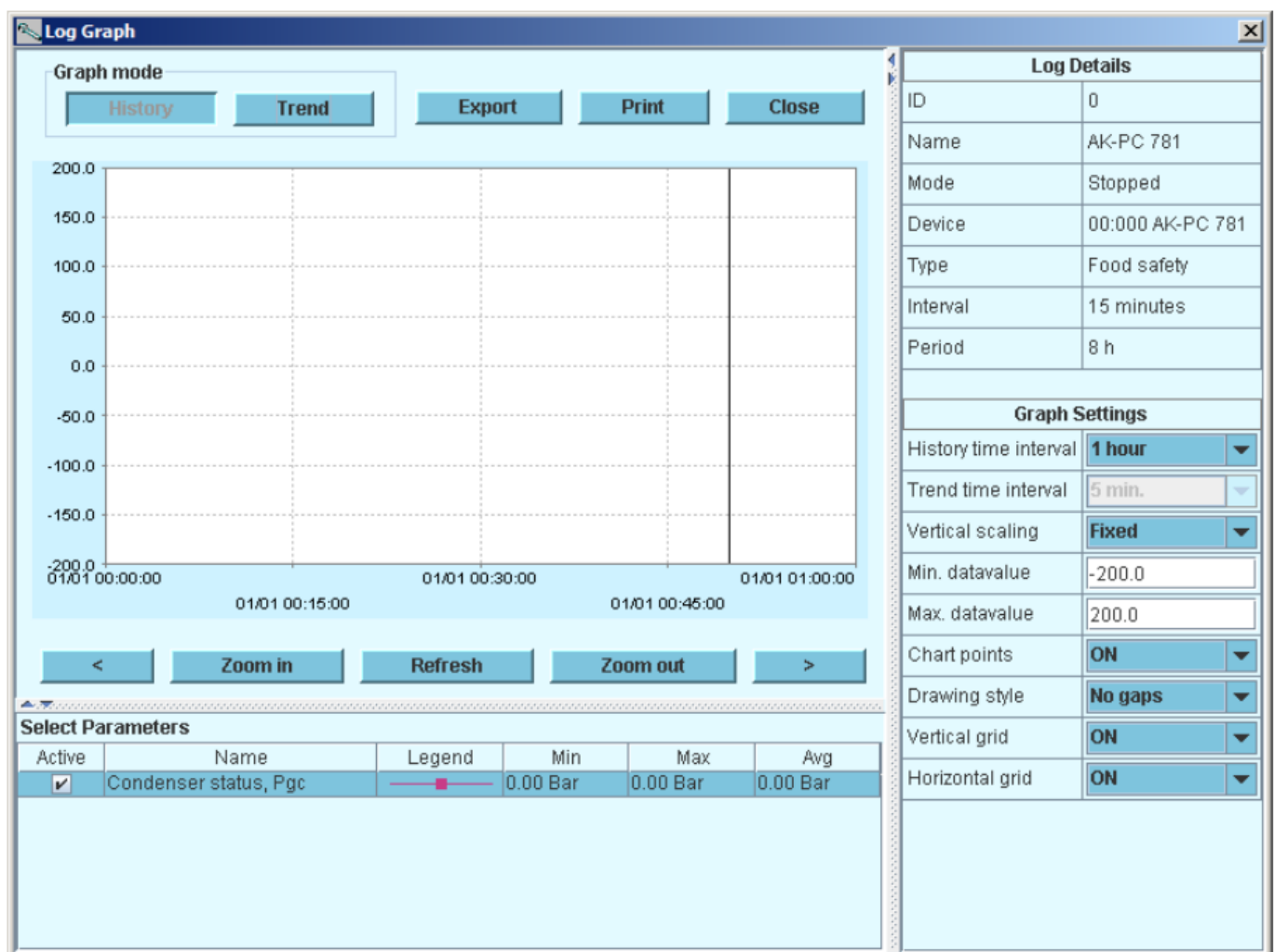
Type = General registration or a collection for service use  
Interval = How often to save a value  
Period = Time when the measurement is saved. Then overwritten.

## Measurement

1. Select a parameter in the field left
2. Lead it into the right field by pressing the arrow button (or double click on the parameter)
3. Finish by pressing "OK"

**Data collection starts when the set-up is locked and the controller is started, the clock is set and start is activated.**

The Graphic



History = Log data, i.e. accumulated data.  
Trend = Trend data, that is to say data that are collected and displayed here and now.  
Export = Export the collected values to a file.  
The file can be opened in Excel.  
Print = Print out the accumulated values on a printer.  
< > = Moves back and forth in time.

## Connection to an external system

If you need to set up a connection to an external system, this must be done from the “Site selection” screen you see when you start the programme.

The screenshot shows a window titled "Site selection" with a close button (X) in the top right corner. Below the title bar is a search bar labeled "Enter Search St...". Underneath the search bar is a table with three columns: "Name", "Location", and "Channel". The table contains three rows of data. Below the table is a large empty rectangular area. At the bottom of the window are five buttons: "Connect", "Trace", "Add", "Change", and "Delete".

| Name        | Location | Channel  |
|-------------|----------|----------|
| Direct      | Local    | COM2     |
| LSN-2 SM350 | L21-N12  | TCP/IP   |
| Off-line    | Local    | Off-line |

Here the following are shown:

Direct: Used when the controller is connected directly to the PC.

Offline: Used when programming takes place without a controller (see page 13).

In addition, it is possible to define external connections, e.g. via modem and TCP/IP. When the selected connection has been defined, it can be selected just like any other.

### Generally about Site Setup

- Site name/location/type are free text fields. Connections are sorted by "Site name"
- Destination name: Must correspond 100% to the destination set up in the recipient's System Manager, or the username in a SM8xx(A)
- Pass code: Must correspond 100% to the password entered in the recipient's System Manager.
- In case of connection to AK-SM 800A System Manager the checkbox "SM8xxA Connectivity" must be checked.

### Modem:

- Phone number: Number of recipient.
- Com PORT: Number where the local modem is connected
- Baud: Baudrate to local modem (default is 38400)
- AT1 command: Initiation string to local modem
- Modem type: Free text for modem type.

### TCP/IP:

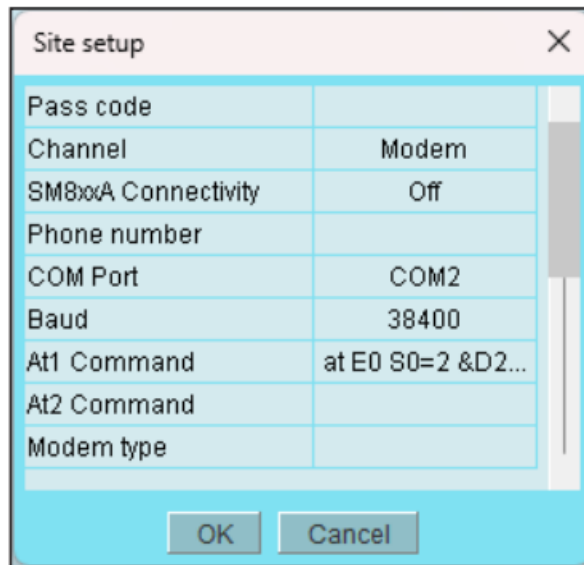
- IP address: IP address of recipient



- TCP port: 1041 or an external port mapped to port 1041

#### DNS name:

- Use if the recipient uses a DNS address.
- TCP Port: 1041 or an external port mapped to port 1041



Site setup

|                    |                   |
|--------------------|-------------------|
| Pass code          |                   |
| Channel            | Modem             |
| SM8xA Connectivity | Off               |
| Phone number       |                   |
| COM Port           | COM2              |
| Baud               | 38400             |
| At1 Command        | at E0 S0=2 &D2... |
| At2 Command        |                   |
| Modem type         |                   |

OK Cancel



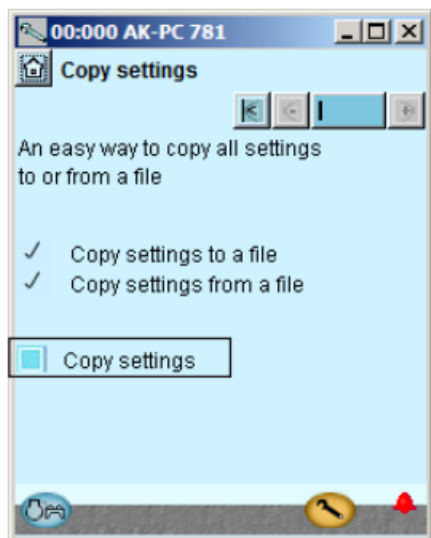
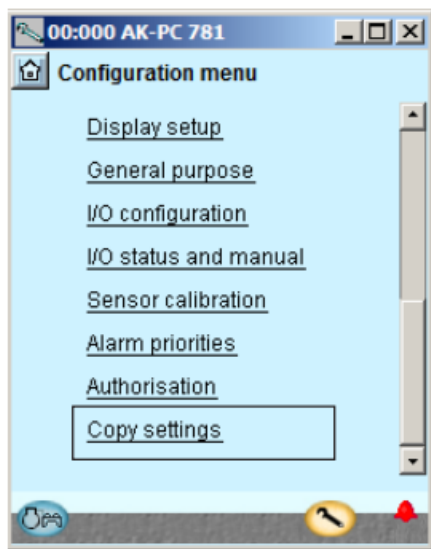
Site setup

|                    |        |
|--------------------|--------|
| Site name          |        |
| Site location      |        |
| Site type          |        |
| Destination name   |        |
| Pass code          |        |
| Channel            | TCP/IP |
| SM8xA Connectivity | On     |
| IP address         |        |
| TCP/IP port        | 1041   |

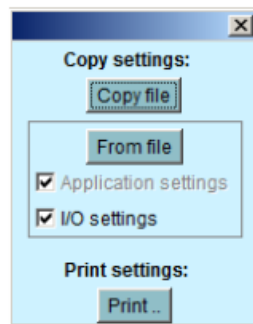
OK Cancel

#### Backup

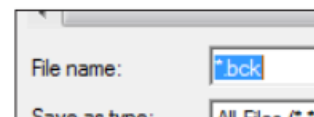
When setting a controller, all of its settings are saved in a backup file. This file can then be saved for security purposes, or it can be used to copy and import settings in a similar controller. Furthermore, you can use the file for "Offline programming", in which you prepare all settings in order to copy the file onto a controller at a later time. This function can be found below in the controller's Configuration menu.



Press "Copy settings"



Press "Copy file"



Give the file a name xxx.bck

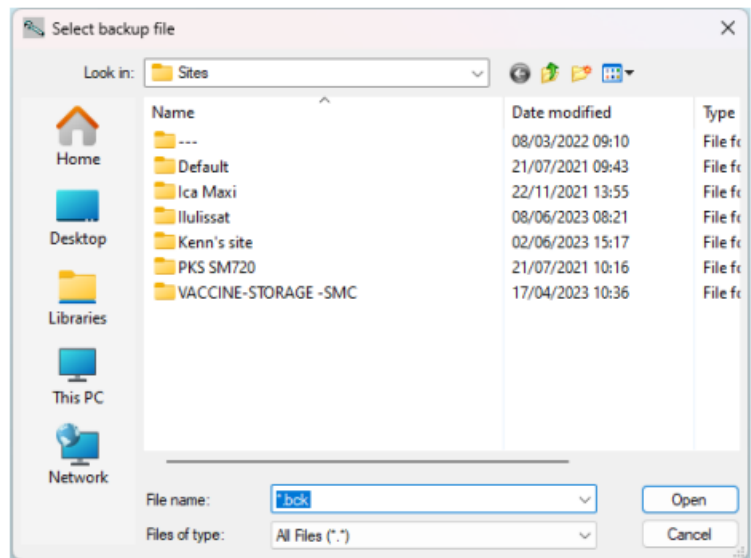
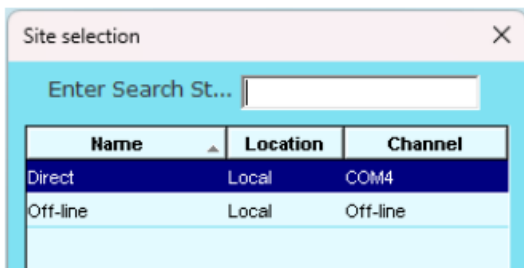
## Offline settings

Here you can work on a file which you can then later transfer to a controller.

It is required that you have a basic .bck file to work from. This must be a file with the same order number and software version as the controller.

The file is a backup file from a system.

It is possible to change settings. Measured values will of course not be displayed. Likewise, functions requiring online connections are omitted.



1. Select site , Offline, Press Connect
2. Select backup folder
3. Select file

If min/max values do not exist in the file, a dialogue will appear.

The decision to download min/max values must be set under the Service Tool setup (see above). ' ' The set values will be saved automatically along the way.

## Languages

The individual controllers operated by the Service Tool contain one or more language selections. English texts are available in all controllers.

On those controllers where it is possible to select a language, the desired language will be shown in the display. However the controller will return to English in cases where the translation is incomplete.

A number of controllers only have English. In these cases the Service Tool downloads a translation from a file supplied with the tool. The language selection is carried out in the display where the Service Tool can be configured. If the selected language is not found in the supplied file, the controller will return to English.

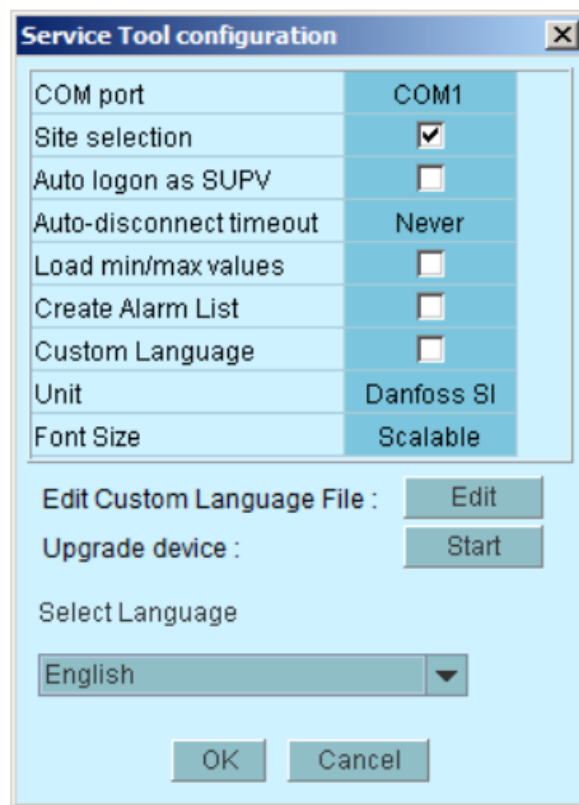
### Alarm texts

The language for alarm texts has to be set in the System Manager AK-SM 720 and the connected controllers. In this function, the System Manager will show the desired language, if it exists in the System Manager. If not, the alarm text will return to English.

### Customer defined texts

If you wish to change some of the texts that are used in the Service Tool, you can do so in the following way:

1. Select the start screen in configuration



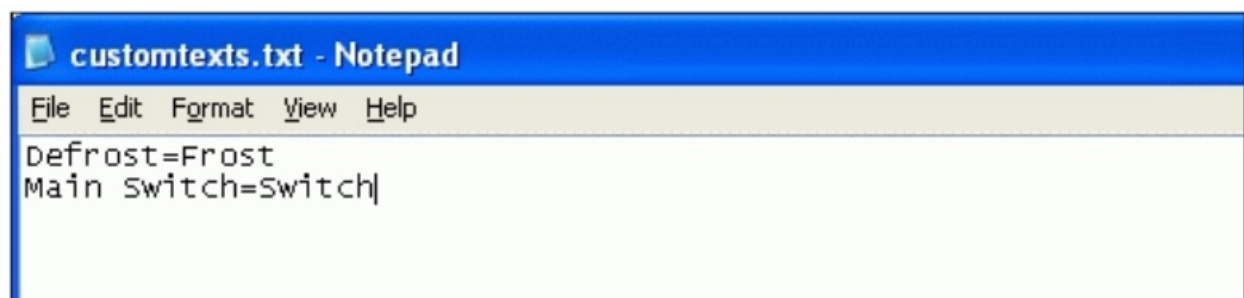
The 'Service Tool configuration' dialog box contains the following settings:

|                         |                                     |
|-------------------------|-------------------------------------|
| COM port                | COM1                                |
| Site selection          | <input checked="" type="checkbox"/> |
| Auto logon as SUPV      | <input type="checkbox"/>            |
| Auto-disconnect timeout | Never                               |
| Load min/max values     | <input type="checkbox"/>            |
| Create Alarm List       | <input type="checkbox"/>            |
| Custom Language         | <input type="checkbox"/>            |
| Unit                    | Danfoss SI                          |
| Font Size               | Scalable                            |

Below the table, there are three buttons: 'Edit Custom Language File : Edit', 'Upgrade device : Start', and 'Select Language' (a dropdown menu showing 'English'). At the bottom are 'OK' and 'Cancel' buttons.

2. Press Edit
3. Type in the original text as you see it. Capital letters and spaces must be included.
4. Type in an equal sign “=”
5. Type in your new text.
6. Save the file.
7. Mark the field “Custom Language”
8. Restart the Service Tool

Example:



The Notepad window titled 'customtexts.txt - Notepad' shows the following text:

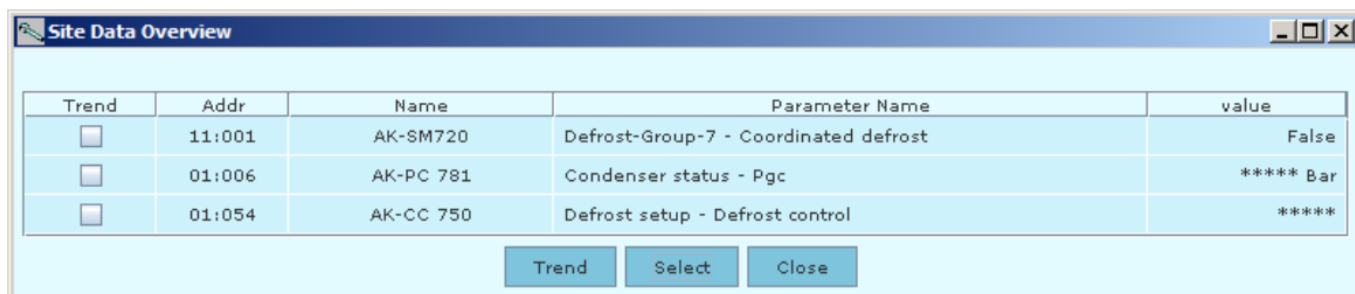
```
Defrost=Frost
Main Switch=Switch|
```

(This setting does not apply to alarm texts).

## Plant overview

With this function you can create an overview over a range of data from the plant. This will contain:  
 Address, Name of controller, Parameter, Value.  
 Up to 99 parameters can be gathered, but only those that can be logged.

**Example:**



The 'Site Data Overview' window displays a table with the following data:

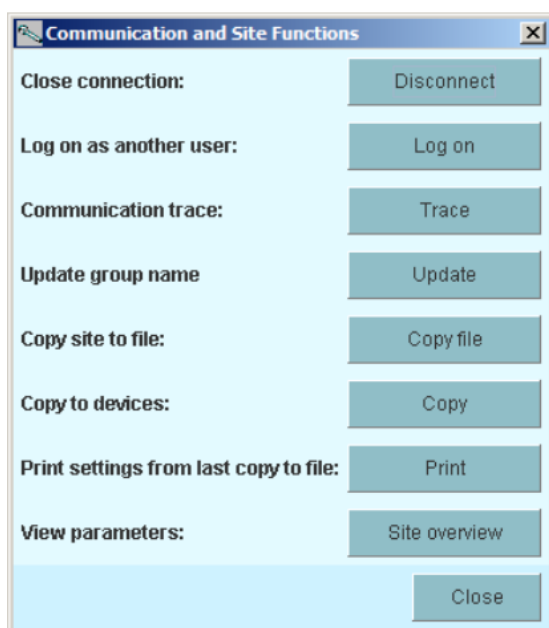
| Trend                    | Addr   | Name      | Parameter Name                        | value     |
|--------------------------|--------|-----------|---------------------------------------|-----------|
| <input type="checkbox"/> | 11:001 | AK-SM720  | Defrost-Group-7 - Coordinated defrost | False     |
| <input type="checkbox"/> | 01:006 | AK-PC 781 | Condenser status - Pgc                | ***** Bar |
| <input type="checkbox"/> | 01:054 | AK-CC 750 | Defrost setup - Defrost control       | *****     |

Buttons at the bottom: Trend, Select, Close

This is how you define the overview:



1. Press "Home"
2. Press "Site functions" and then "Site overview"



The 'Communication and Site Functions' window contains the following options and buttons:

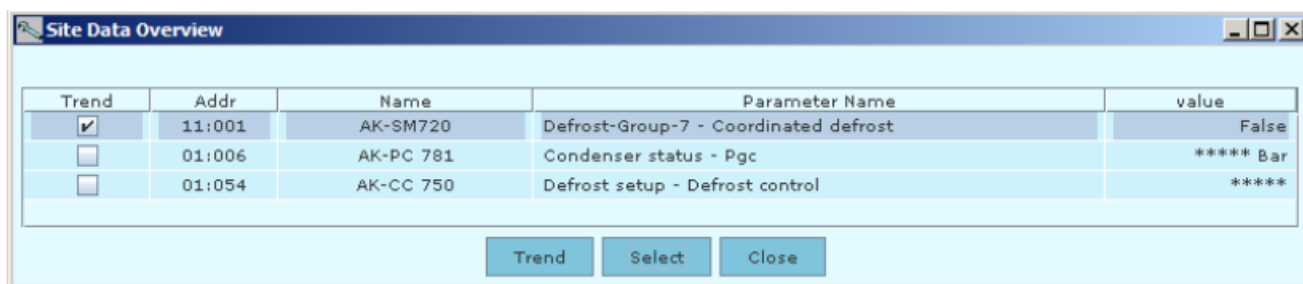
- Close connection: Disconnect
- Log on as another user: Log on
- Communication trace: Trace
- Update group name: Update
- Copy site to file: Copy file
- Copy to devices: Copy
- Print settings from last copy to file: Print
- View parameters: Site overview
- Close

Modem info

Change controller name on plant

You can only access this function in a System Manager.

3. Press "Select".

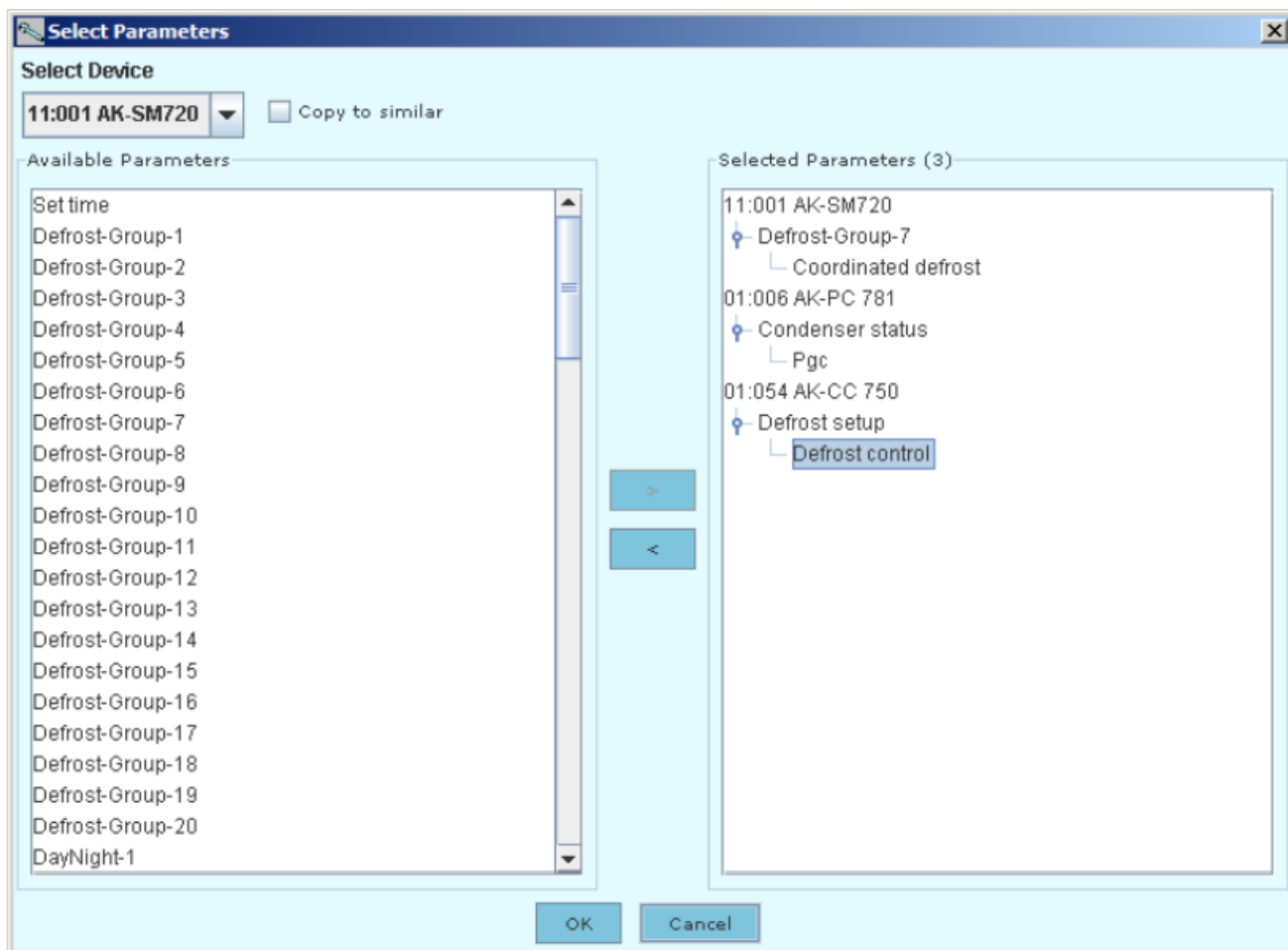


The 'Site Data Overview' window after selecting the first row. The 'Trend' column for the first row is now checked.

| Trend                               | Addr   | Name      | Parameter Name                        | value     |
|-------------------------------------|--------|-----------|---------------------------------------|-----------|
| <input checked="" type="checkbox"/> | 11:001 | AK-SM720  | Defrost-Group-7 - Coordinated defrost | False     |
| <input type="checkbox"/>            | 01:006 | AK-PC 781 | Condenser status - Pgc                | ***** Bar |
| <input type="checkbox"/>            | 01:054 | AK-CC 750 | Defrost setup - Defrost control       | *****     |

Buttons at the bottom: Trend, Select, Close

4. Select controller and parameter

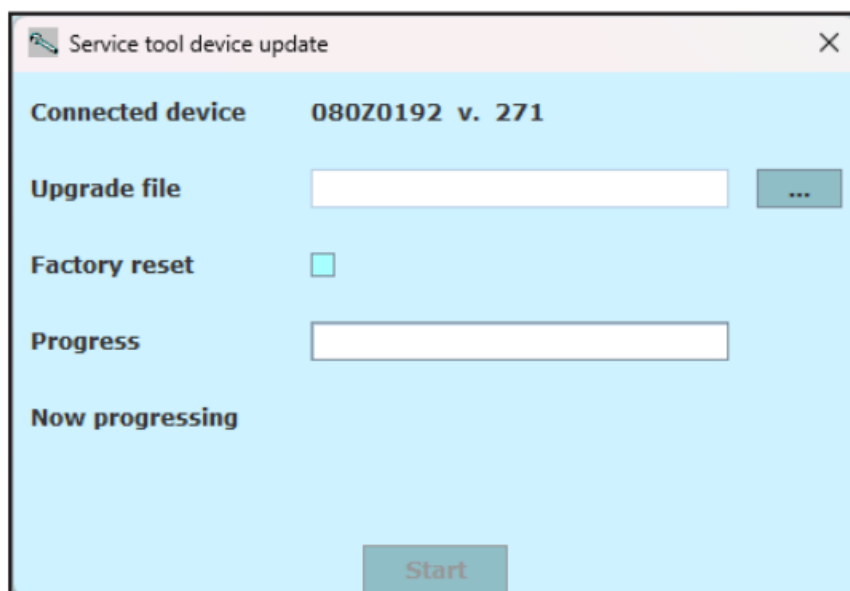


5. Finish by pressing “OK”

## Upgrade Device

If the software in a controller requires an upgrade, use the following procedure:

1. Connect the Service Tool directly to the controller
2. Start the update function in the Service Tool – configuration
3. The update display is shown here



4. Find the file containing the new software
5. Press "Start"

## Danfoss A/S

Climate Solutions • danfoss.com • +45 7488 2222

Any information, including, but not limited to information on selection of product, its application or use, product design, weight, dimensions, capacity or any other technical data in product manuals, catalogs descriptions, advertisements, etc. and whether made available in writing, orally, electronically, online or via download, shall be considered informative and is only binding if and to the extent, explicit reference is made in a quotation or order confirmation. Danfoss cannot accept any responsibility for possible errors in catalogs, brochures, videos and other material.

Danfoss reserves the right to alter its products without notice. This also applies to products ordered but not delivered provided that such alterations can be made without changes to form, fit or function of the product.

All trademarks in this material are property of Danfoss A/S or Danfoss group companies. Danfoss and the Danfoss logo are trademarks of Danfoss A/S. All rights reserved.

© Danfoss | Climate Solutions | 2024.06

## Documents / Resources



### [Danfoss AK-ST 500 Software for AK Controller](#) [pdf] User Guide

AK-ST 500, AK-ST 500 Software for AK Controller, Software for AK Controller, AK Controller, Controller

## References

- [Downloads | Danfoss](#)
- [User Manual](#)

[Manuals+](#), [Privacy Policy](#)

This website is an independent publication and is neither affiliated with nor endorsed by any of the trademark owners. The "Bluetooth®" word mark and logos are registered trademarks owned by Bluetooth SIG, Inc. The "Wi-Fi®" word mark and logos are registered trademarks owned by the Wi-Fi Alliance. Any use of these marks on this website does not imply any affiliation with or endorsement.