



Danfoss AK-PC Remote Connection to AK-PC Pack Controller Installation Guide

[Home](#) » [Danfoss](#) » Danfoss AK-PC Remote Connection to AK-PC Pack Controller Installation Guide 

Danfoss AK-PC Remote Connection to AK-PC Pack Controller



Contents

- [1 Instruction For Use](#)
- [2 Customer Support](#)
- [3 Documents / Resources](#)
 - [3.1 References](#)
- [4 Related Posts](#)

Instruction For Use

1. For a new site, start by opening Service Tool and select Add button at bottom.

Site selection

Enter Search St... test

Name	Location	Channel
------	----------	---------

Connect Trace **Add** Change Delete

2. Configure site setup details, general example below. Ensure network team has opened TCP port (default 1041) for specific IP address.

Site Name: User Preference

Site location: User Preference

Site Type: User Preference

Destination Name: User Name of System Manager credentials

Pass code: Password of System Manager credentials

Channel: Set as TCP/IP

Enhanced Security: Network-based, may be on / off

IP address: IP of System Manager used for tunneling

TCP port: Port used for tunneling, must be open on network (default 1041 typically used)

A screenshot of a 'Site setup' dialog box. The dialog has a title bar with 'Site setup' and a close button (X). It contains a table with the following fields and values: Site name (Site 1234), Site location (empty), Site type (empty), Destination name (Supervisor), Pass code (*****), Channel (TCP/IP), Enhanced Security (Off), IP address (192.168.111.123), and TCP port (1041). The IP address field is highlighted. At the bottom are 'OK' and 'Cancel' buttons.

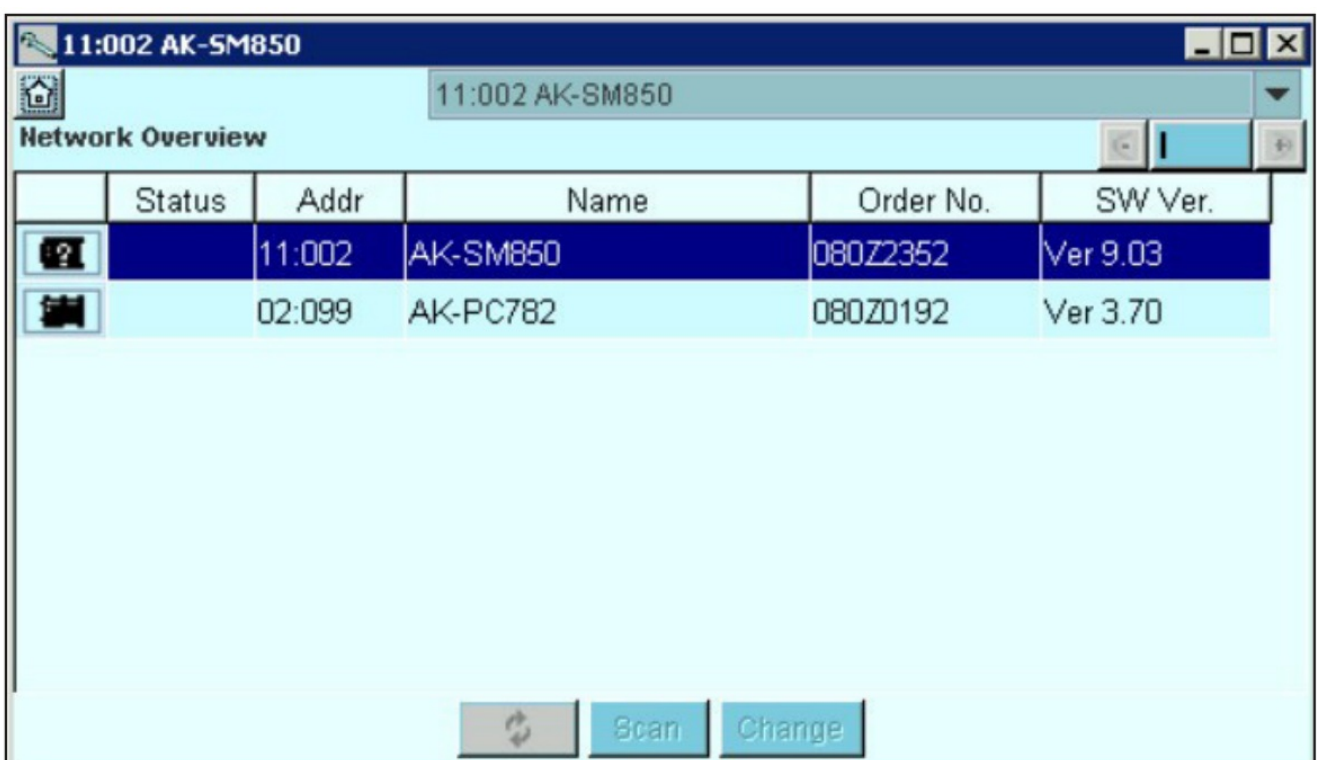
Field	Value
Site name	Site 1234
Site location	
Site type	
Destination name	Supervisor
Pass code	*****
Channel	TCP/IP
Enhanced Security	Off
IP address	192.168.111.123
TCP port	1041

Notes:

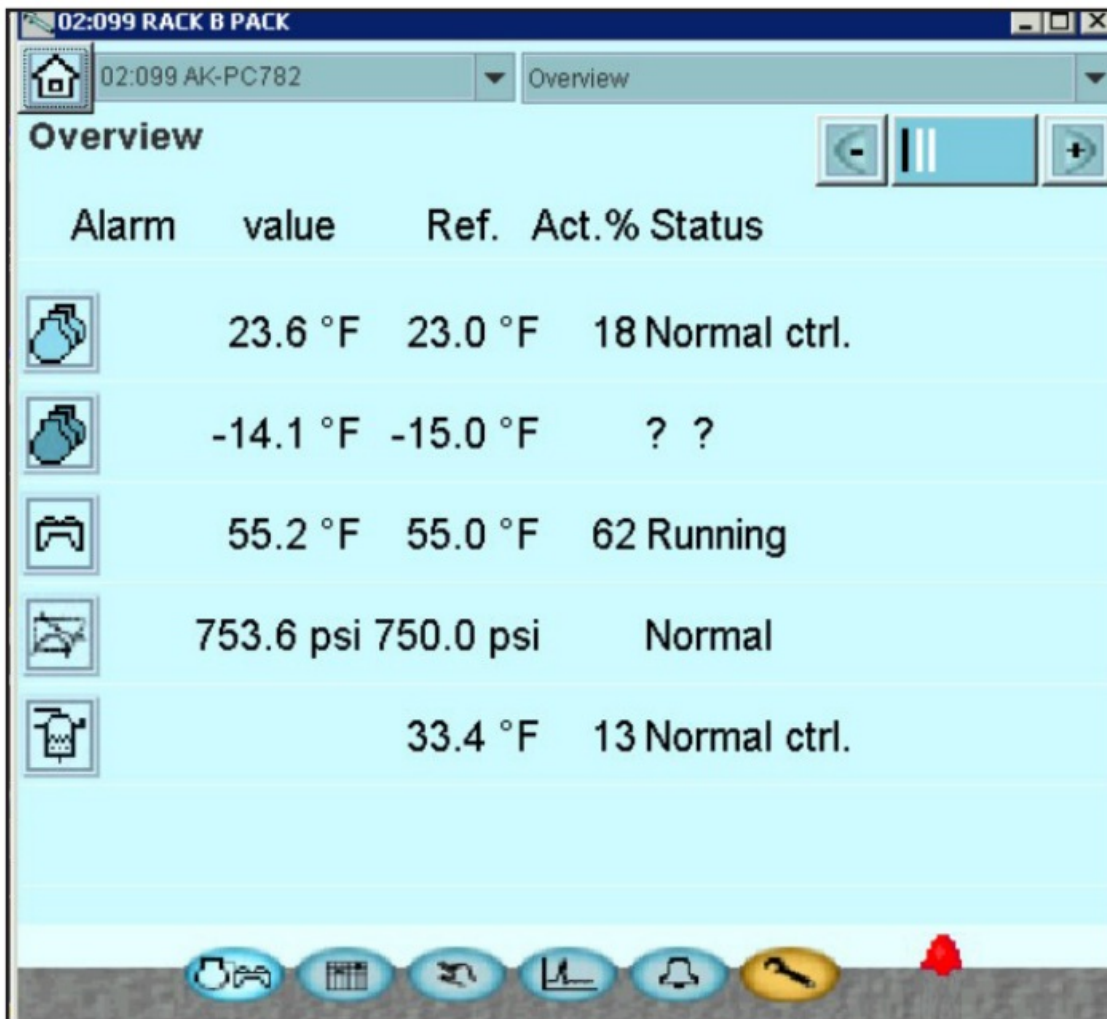
1. For sites with multiple system managers, a separate site must be configured in Service Tool per system manager
 2. Ensure IT/network team has opened TCP port for each system manager/IP address used for tunneling
 3. If user feels setup is correct and unable to connect, try toggling Enhanced Security
 4. User must have Supervisor-level system manager credentials to tunnel in
3. Once connection has been created, select from site selection list and press Connect button.



4. Software will now tunnel into Service Tool. Once screen showing pack controller appears (see below), press on icon in left column of pack controller row.



5. This will now bring user to standard pack controller overview screen, where they can navigate same as a local connection.



Customer Support

DanfossA/S


Climate Solutions • danfoss.com • +45 7488 2222

Any information, including, but not limited to information on selection of product, its application or use, product design, weight, dimensions, capacity or any other technical data in product manuals, catalogues descriptions, advertisements, etc. and whether made available in writing, orally, electronically, online or via download, shall be considered informative, and is only binding if and to the extent, explicit reference is made in a quotation or order confirmation. Danfoss cannot accept any responsibility for possible errors in catalogues, brochures, videos and other material.

Danfoss reserves the right to alter its products without notice. This also applies to products ordered but not delivered provided that such alterations can be made without changes to form, fit or function of the product. All trademarks in this material are property of Danfoss A/S or Danfoss group companies. Danfoss and the Danfoss logo are trademarks of Danfoss A/S. All rights reserved.



Documents / Resources

	<p>Danfoss AK-PC Remote Connection to AK-PC Pack Controller [pdf] Installation Guide AK-PC Remote Connection to AK-PC Pack Controller, AK-PC, Remote Connection to AK-PC Pack Controller, Connection to AK-PC Pack Controller, AK-PC Pack Controller, Pack Controller, Controller</p>
---	---

References

- [User Manual](#)

[Manuals+](#), [Privacy Policy](#)

This website is an independent publication and is neither affiliated with nor endorsed by any of the trademark owners. The "Bluetooth®" word mark and logos are registered trademarks owned by Bluetooth SIG, Inc. The "Wi-Fi®" word mark and logos are registered trademarks owned by the Wi-Fi Alliance. Any use of these marks on this website does not imply any affiliation with or endorsement.