



Danfoss 310 ECL Comfort Controllers Installation Guide

[Home](#) » [Danfoss](#) » Danfoss 310 ECL Comfort Controllers Installation Guide 

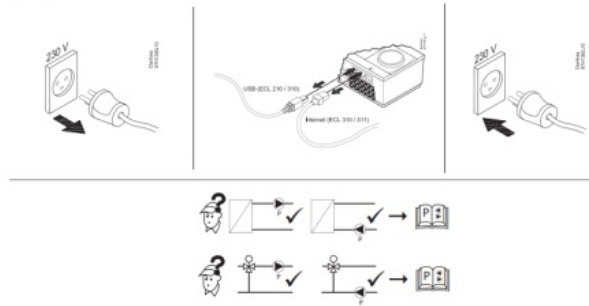


ENGINEERING TOMORROW
Installation Guide
ECL Comfort 310, P501, 230 Volt
(code no. 087H3842)

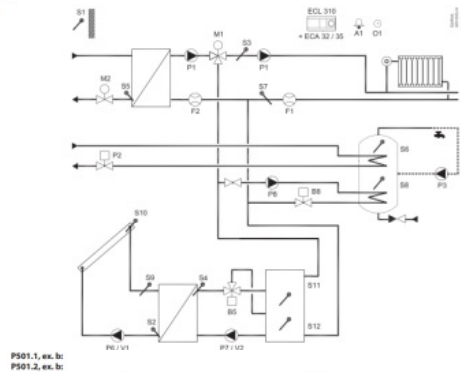
Contents

- [1 310 ECL Comfort Controllers](#)
- [2 Pt 1000](#)
- [3 Documents / Resources](#)
 - [3.1 References](#)

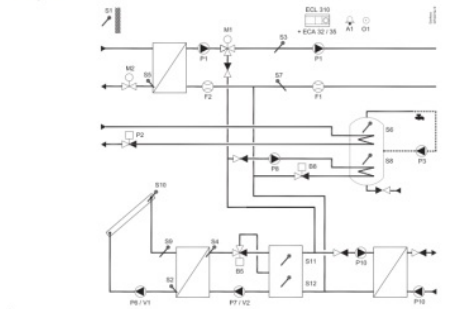
310 ECL Comfort Controllers



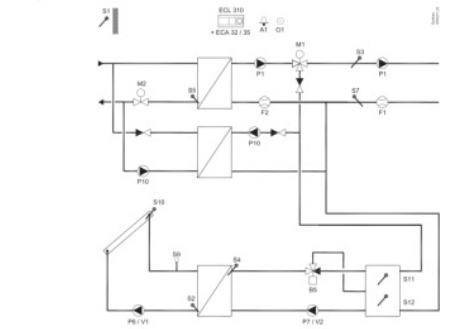
P501.1, ex. a:
P501.2, ex. a:



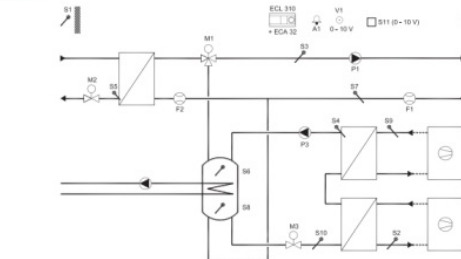
P501.1, ex. b:
P501.2, ex. b:



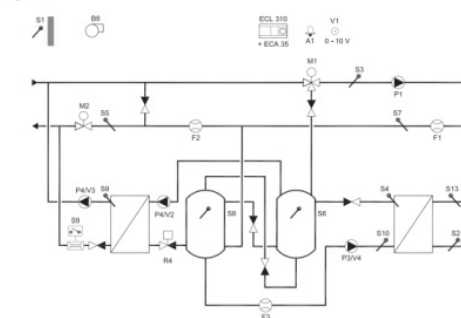
P501.1, ex. c:
P501.2, ex. c:



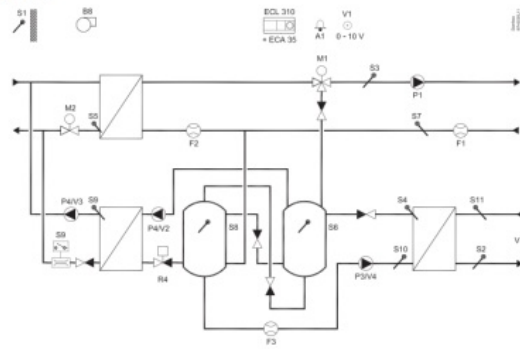
P501.11, ex. a:



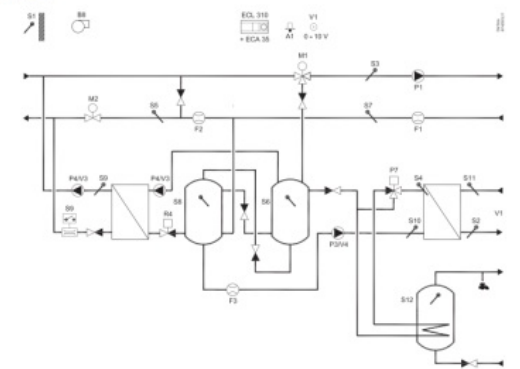
P501.12, ex. a:



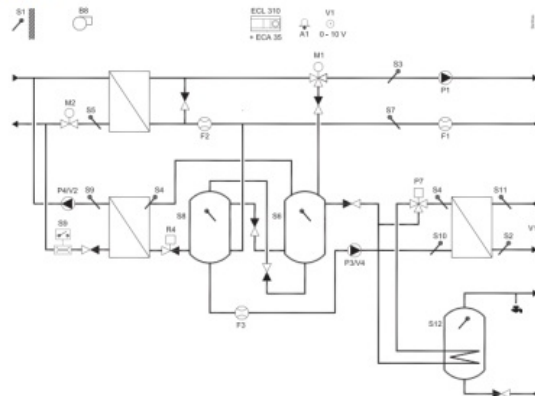
P501.12, ex. b:



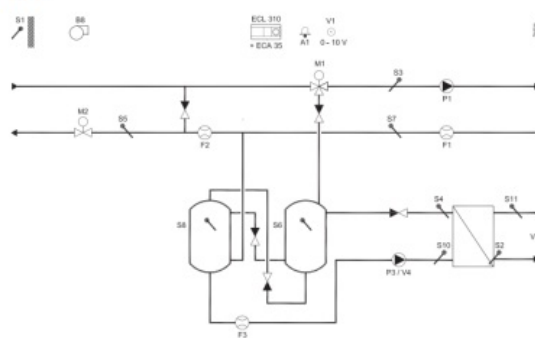
P501.12, ex. c:



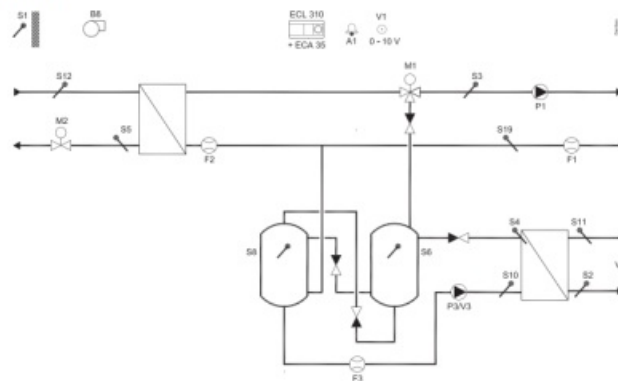
P501.12, ex. d:



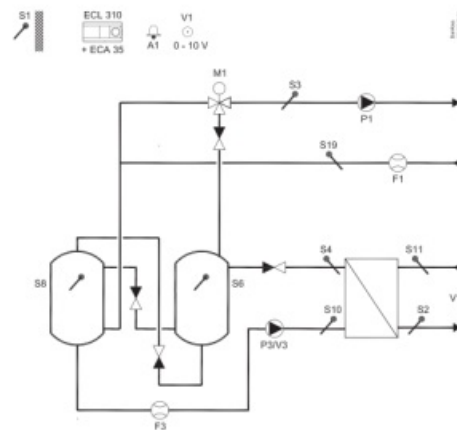
P501.12, ex. e:



P501.13, ex. f:



P501.13, ex. f1:



P501.1

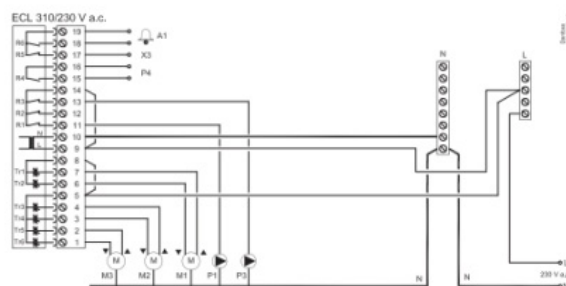
P501.2

ECL 310, 230 V a.c.:



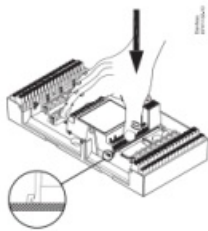
P501.13

ECL 310, 230 V a.c.:

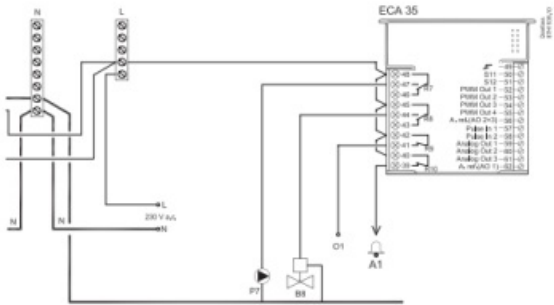


	ECA 32	ECA 35
P501.1	X	X
P501.2	X	X
P501.11	X	
P501.12		X
P501.13		X

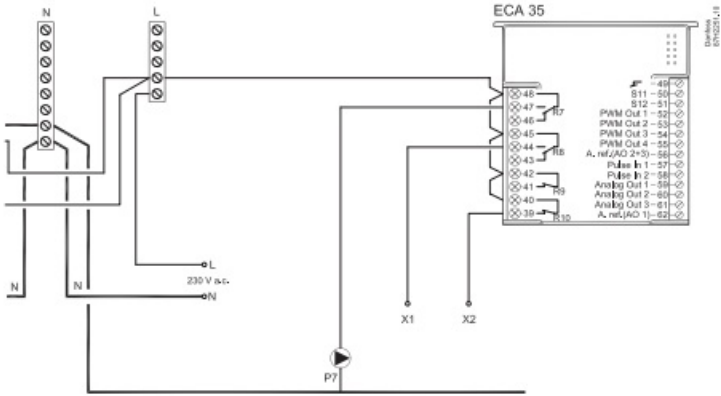
ECA 32 / 35



P501.1
P501.2
ECA 32 / ECA 35
P7, B8, O1, A1



P501.1
P501.2
ECA 32 / ECA 35
P7, B8, O1, A1



ECA 35

Pin 1	18V
Pin 2	15V
Pin 3	12V
Pin 4	10V
Pin 5	9V
Pin 6	18V
Pin 7	15V
Pin 8	12V
Pin 9	10V
Pin 10	9V
Pin 11	18V
Pin 12	15V
Pin 13	12V
Pin 14	10V
Pin 15	9V
Pin 16	18V
Pin 17	15V
Pin 18	12V
Pin 19	10V

0-10V

[illegible]

ECA 32

—49—

A. ref.(AO 2+3)—56—

Pulse In 1—57—

Pulse In 2—58—

Analog Out 1—59—

Analog Out 2—60—

Analog Out 3—61—

A. ref.(AO 1)—62—

0 - 10 V

Downloaded from www.asi.it

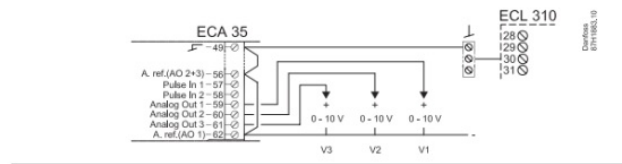
ECA 32

Coordinate (X, Y, Z)

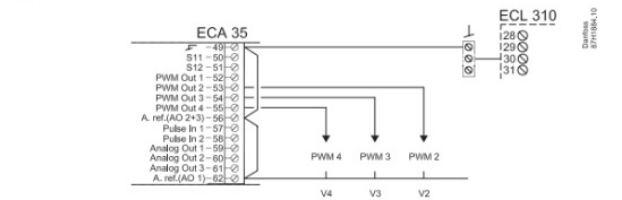
A. ref. (AO 2+3) - 56
 Pulse In 1 - 57
 Pulse In 2 - 58
 Analog Out 1 - 59
 Analog Out 2 - 60
 Analog Out 3 - 61
 A. ref. (AO 1) - 62

0 - 10 V

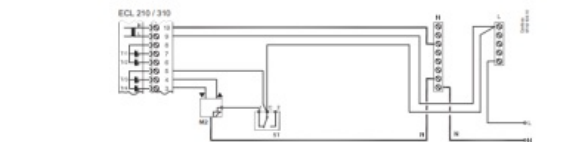
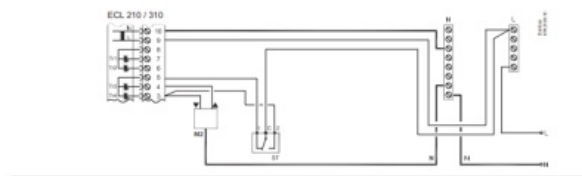
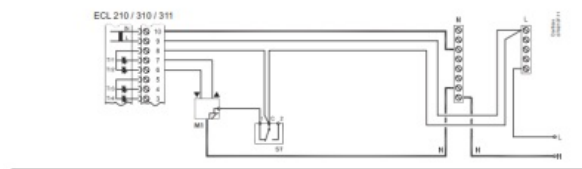
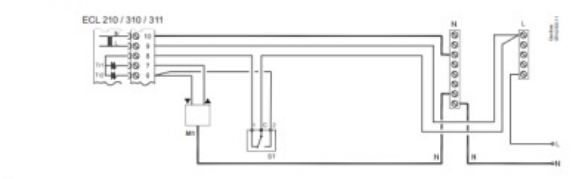
P501.12
P501.13
ECA 35
V1, V2, V3
0-10 V



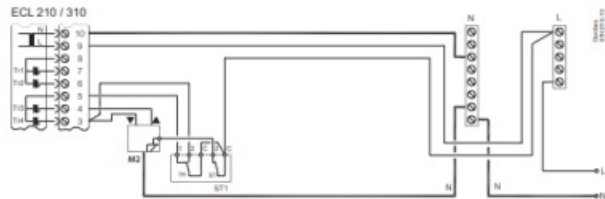
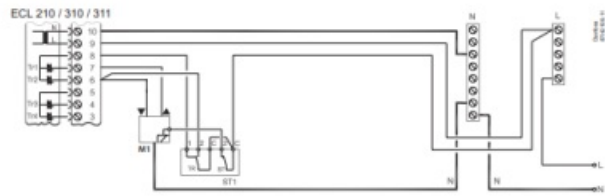
P501.12
P501.13
ECA 35
V2, V3, V4
PWM



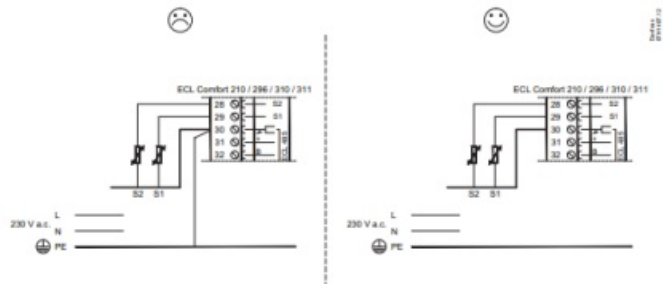
230 V a.c. / 24 V a.c., safety thermostat
1-step closing



230 V a.c. / 24 V a.c., safety thermostat
2-step closing



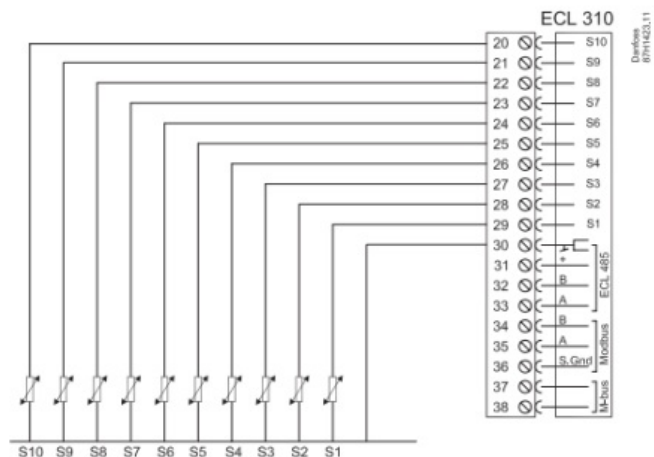
Pt 1000 (1000 Ω / 0 °C)



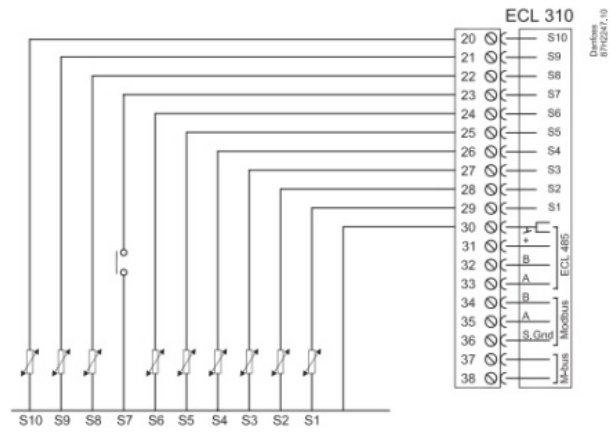
Pt 1000

X	X	X		X	X	X	X	X	X	E' L' LO Sd
X	X	X	X	X	X	X	X	X	X	Z' L' LO Sd
X	X	X	X	X	X	X	X	X	X	L' L' LO Sd
X	X	X	X	X	X	X	X	X	X	Z' LOSd
X	X	X	X	X	X	X	X	X	X	L' LOSd
0 LS	6S	8S	LS	9S	SS	PS	ES	ZS	LS	

P501.1, P501.2, P501.11, P501.12
Pt 1000 (1000 Ω / 0 °C)



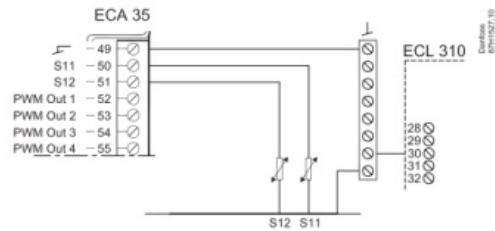
P501.13
Pt 1000 (1000 Ω / 0 °C)



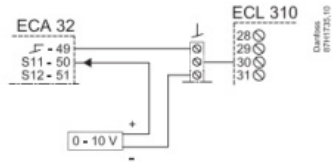
	ECA 32					
	511	512	S13	514	515	516
P501.1	Pt 1000	Pt 1000				
P501.2	Pt 1000	Pt 1000				
P501.11	0 – 10V		Pt 1000		Pt 1000	
P501.12						
P501.13						

	ECA 35					
	511	512	S13	514	515	516
P501.1	Pt1000	Pt1000				
P501.2	Pt1000	Pt1000				
P501.11	0 – 10V					
P501.12	Pt 1000	Pt 1000				
P501.13	Pt1000	Pt1000				

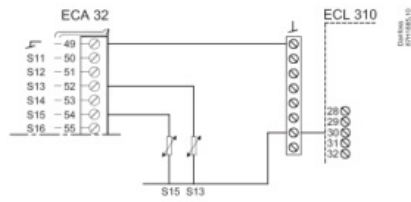
P501.1
ECA 32 / 35, S11, S12, Pt 1000



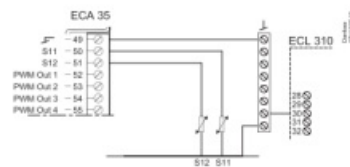
P501.11
ECA 32, S11, 0 - 10 V



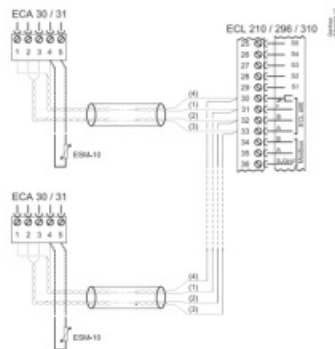
P501.11
ECA 32
S13, S15, Pt 1000



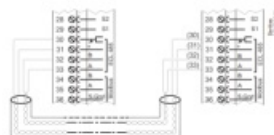
P501.12
P501.13
ECA 35
S11, S12



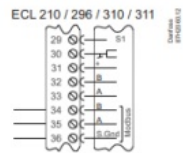
ECA 30 / 31



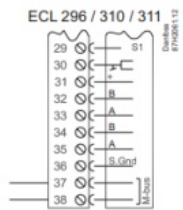
Master / slave



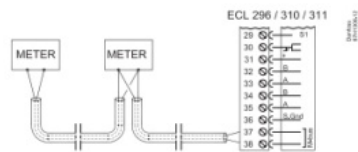
Modbus



M-bus

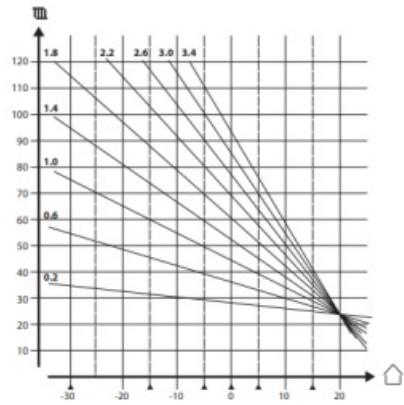
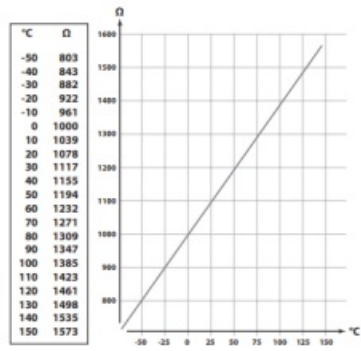


P501.1, P501.2, P501.11, P501.12, P501.13:
F1+ F2+F3+F4
M-bus



x	x	x	(6 LS) x	£ V LOSd
	x	x	x	Z V LOSd
	x	x	x	1 V 1.05d
		x	x	Z' LOSd
		x	x	L' 1.05d
VS	Ed	ZS	IS	

Pt 1000 (IEC 751B, 1000 Ω / 0 °C)

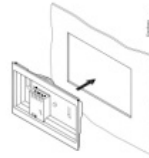


ECA 30

1



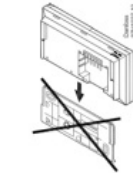
2



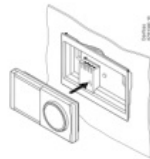
3



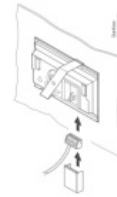
4



5



6

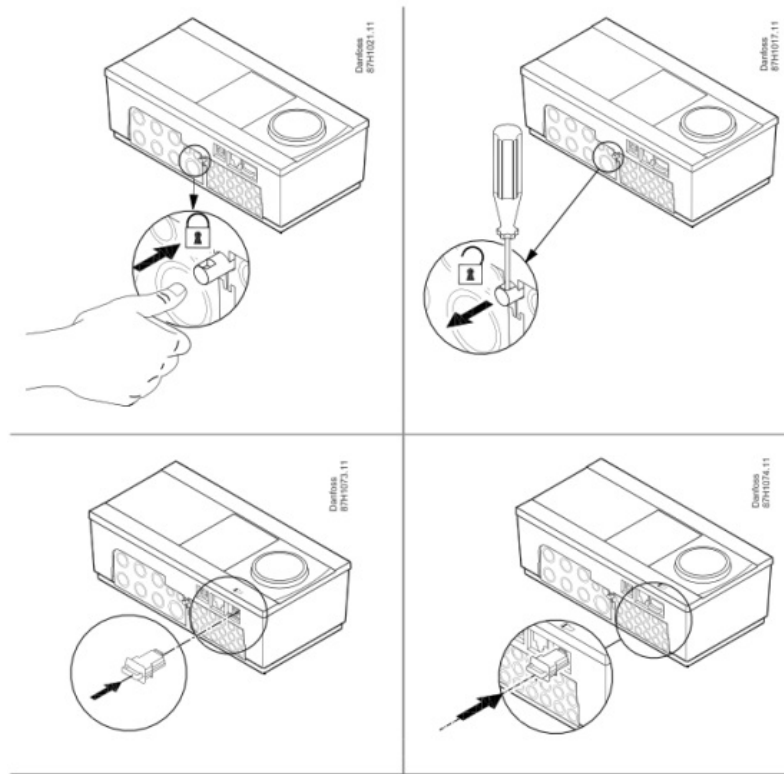


7



8





📄 ECL Comfort 310, P501: www.danfoss.com

📄 <https://www.youtube.com/user/DanfossHeating>

-> Playlists -> How-to Videos -> District Energy installation videos

Danfoss A/S

Climate Solutions danfoss.com +45 7488 2222

Any information, including, but not limited to information on selection of product, its application or use, product design, weight, dimensions, capacity or any other technical data in product manuals, catalogues descriptions, advertisements, etc, and whether made available in writing, orally, electronically, online or via download, shall be considered informative, and is only binding if and to the extent, explicit reference is made in a quotation or order confirmation. Danfoss cannot accept any responsibility for possible errors in catalogues, brochures, videos and other material.

Danfoss reserves the right to alter its products without notice. This also applies to products ordered but not delivered provided that such alterations can be made without changes to form, fit or function of the product.

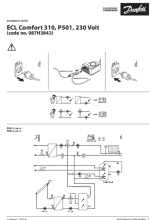
All trademarks in this material are property of Danfoss A/S or Danfoss group companies. Danfoss and the Danfoss logo are trademarks of Danfoss A/S. All rights reserved.

24 Danfoss | DCS-SGDPT/DK | 2023.05

AN19798647125300-000801



Documents / Resources



[Danfoss 310 ECL Comfort Controllers](#) [pdf] Installation Guide P501, ECA 32, ECA 35, 310 ECL Comfort Controllers, Comfort Controllers, Controllers

References

- [User Manual](#)

[Manuals+](#), [Privacy Policy](#)

This website is an independent publication and is neither affiliated with nor endorsed by any of the trademark owners. The "Bluetooth®" word mark and logos are registered trademarks owned by Bluetooth SIG, Inc. The "Wi-Fi®" word mark and logos are registered trademarks owned by the Wi-Fi Alliance. Any use of these marks on this website does not imply any affiliation with or endorsement.