



**Danfoss
088N2108
01 Icon
Master
Controller**



Danfoss 088N2108 01 Icon Master Controller Installation Guide

[Home](#) » [Danfoss](#) » Danfoss 088N2108 01 Icon Master Controller Installation Guide 

Contents

- [1 Danfoss 088N2108 01 Icon Master Controller](#)
- [2 Product Information](#)
- [3 Product Usage Instructions](#)
- [4 Installation](#)
- [5 Ping Test – from Zigbee module](#)
- [6 LED Blinking patterns](#)
- [7 Documents / Resources](#)
 - [7.1 References](#)
- [8 Related Posts](#)



Danfoss 088N2108 01 Icon Master Controller



Product Information

Specifications

- Product Name: Zigbee Module for Danfoss Icon™ Master Controller
- Model Number: AN32293719605201-010202 / 088N2108 01
- Compatibility: Designed for use with Danfoss Icon™ Master Controller
- Network Protocol: Zigbee 3.0

Product Usage Instructions

Installation

To install the Zigbee Module for Danfoss Icon™ Master Controller, follow these steps:

1. Choose a suitable location for placement.
2. Follow the installation instructions provided in the manual corresponding to your language.

Including Module to Zigbee Network

To include the module in your Zigbee network, follow these steps:

1. Refer to the specific instructions provided in the manual for detailed guidance.
2. Ensure that the Zigbee Module is within range of your Zigbee network.

LED Blinking Patterns

Observe the LED blinking patterns to understand the status of the Zigbee Module.

Lost Connection to Zigbee Network:

If you experience a lost connection, refer to the manual for troubleshooting steps specific to your language.

Updating the Master Controller Firmware:

To update the firmware of the Master Controller, follow these steps:

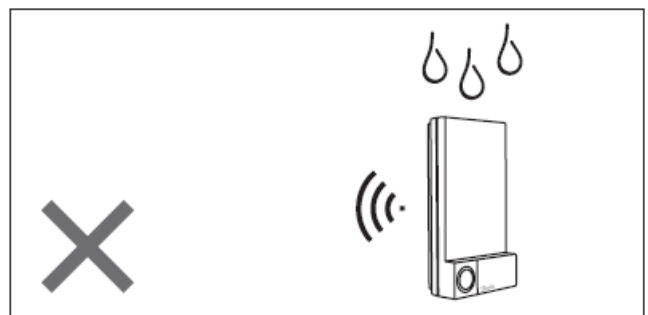
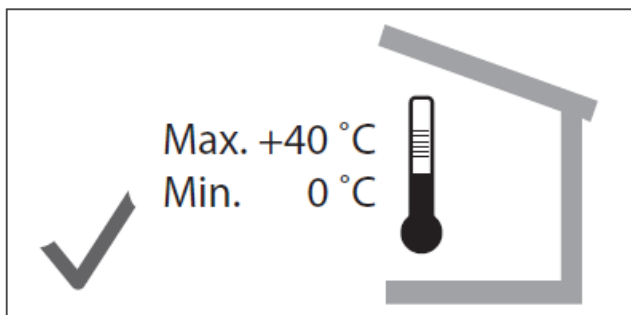
1. Refer to the Danfoss Icon™ 24V Master Controller installation manual for detailed instructions.
2. Do not disconnect the device during the update process.

Frequently Asked Questions (FAQ)

Q: Does the Icon™ Master Controller support the Zigbee module?

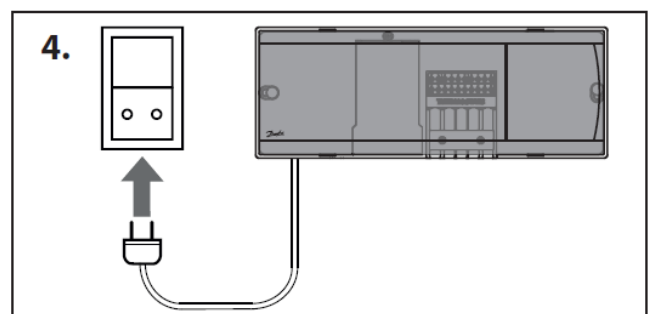
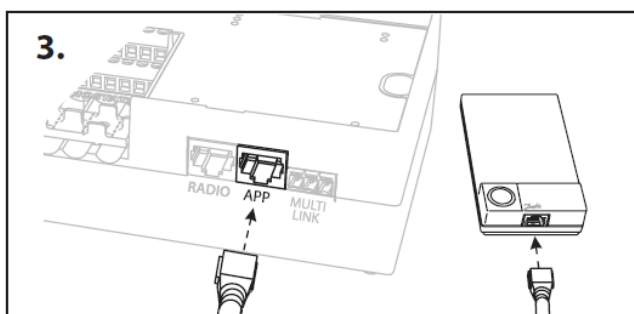
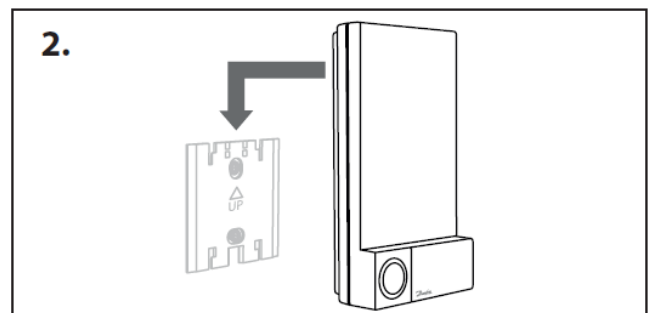
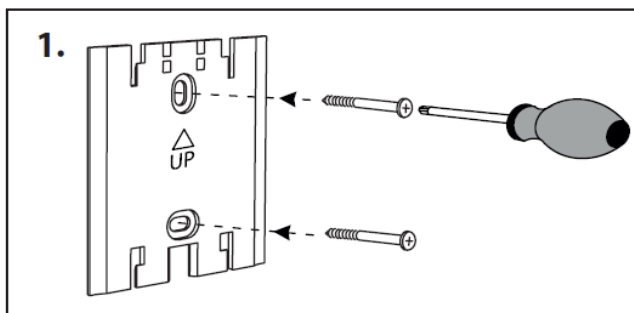
A: No, the Icon™ Master Controller does not support the Zigbee module as indicated in the manual.

Placement



Installation

•

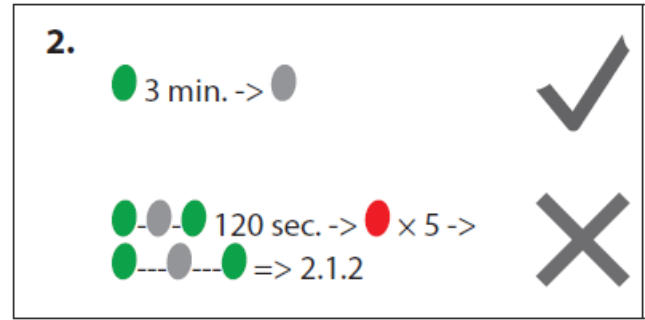
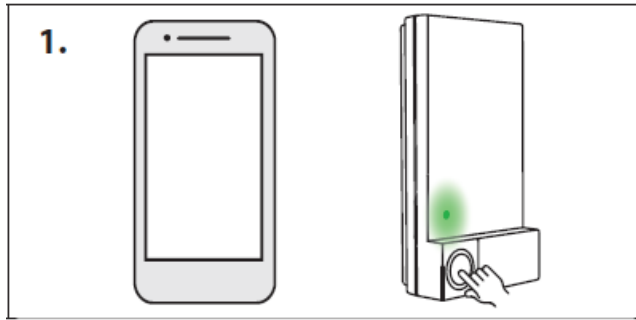


Ready for inclusion

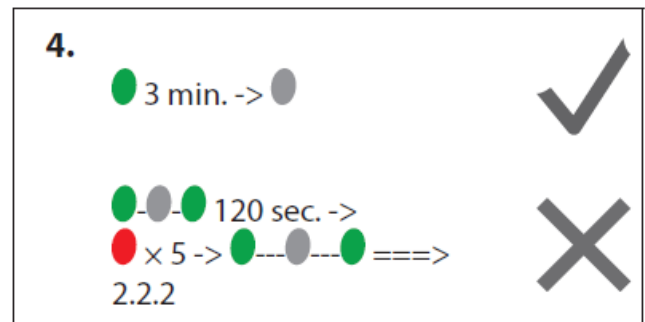
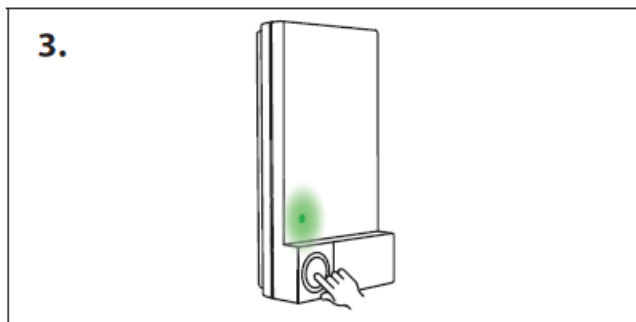
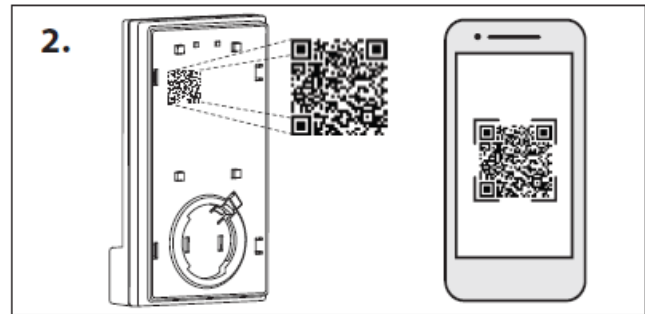
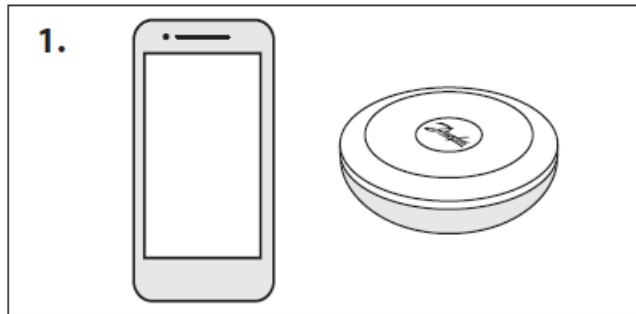
- Icon™ Master Controller does not support Zigbee module

Including module to Zigbee network

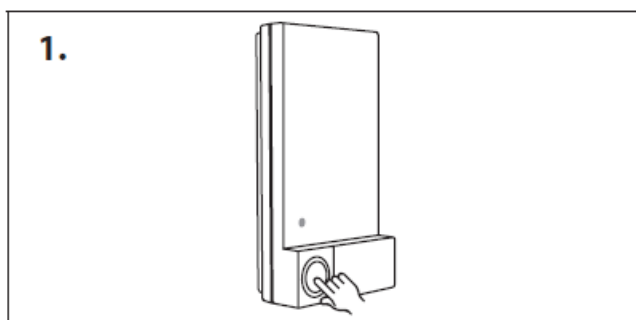
<Zigbee 3.0



Zigbee 3.0



Ping Test – from Zigbee module



LED Blinking patterns

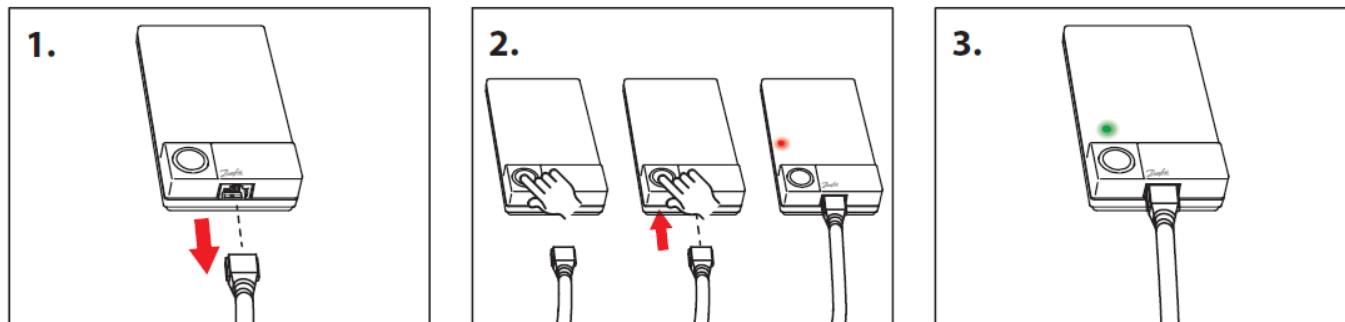
Identify – from App ●-●-● × 5 -> ● -> ●

Lost connection to Zigbee network ●-●-●

Updating the Master Controller firmware ●-●-●

- Update in progress – Do not disconnect while updating.
- Please refer to Danfoss Icon™ 24V Master Controller installation guide for more information.

Factory reset Zigbee module



UK Product Security and Telecommunications Infrastructure (UK PSTI) statement

For the product covered by this instruction, including relevant software, Danfoss declares that, to the best of our knowledge, the product and related software complies with the requirements stated in the UK PSTI Act and Regulation, provided that the product is used in accordance with our instructions.

- No universal default passwords.
- The security update period for this product is Invoice date + 2 years.
- If a security vulnerability is identified with the product, this can be reported by following this link:

<https://www.danfoss.com/en/service-and-support/report-security-vulnerability/>

If you report a security vulnerability you will receive an acknowledgment of the receipt of the security issue reported and the option for status updates until the resolution of the reported security issue.

Simplified EU Declaration of Conformity

Hereby, Danfoss A/S declares that the radio equipment type Zigbee Module is in compliance with Directive 2014/53/EU. The full text of the EU declaration of conformity is available at the following internet address:


EU DECLARATION OF CONFORMITY

- Danfoss A/S Climate Solutions
- danfoss.com
- +45 7488 2222

Any information, including, but not limited to information on selection of product, its application or use, product design, weight, dimensions, capacity or any other technical data in product manuals, catalogues descriptions, advertisements, etc. and whether made available in writing, orally, electronically, online or via download, shall be considered informative, and is only binding if and to the extent, explicit reference is made in a quotation or order confirmation. Danfoss cannot accept any responsibility for possible errors in catalogues, brochures, videos and other material. Danfoss reserves the right to alter its products without notice. This also applies to products ordered but not delivered provided that such alterations can be made without changes to form, fit or function of the product.

All trademarks in this material are property of Danfoss A/S or Danfoss group companies. Danfoss and the Danfoss logo are trademarks of Danfoss A/S. All rights reserved.

Documents / Resources

	<p>Danfoss 088N2108 01 Icon Master Controller [pdf] Installation Guide AN32293719605201-010202, 088N2108 01, 088N2108 01 Icon Master Controller, 088N2108 01, Icon Master Controller, Master Controller, Controller</p>
---	---

References

-  [Report a vulnerability | Danfoss](#)
- [User Manual](#)

Manuals+, [Privacy Policy](#)

This website is an independent publication and is neither affiliated with nor endorsed by any of the trademark owners. The "Bluetooth®" word mark and logos are registered trademarks owned by Bluetooth SIG, Inc. The "Wi-Fi®" word mark and logos are registered trademarks owned by the Wi-Fi Alliance. Any use of these marks on this website does not imply any affiliation with or endorsement.