

*Danfoss*

**087R9519**

**Socket for**

**Wall Mounting**



## Danfoss 087R9519 Socket for Wall Mounting User Guide

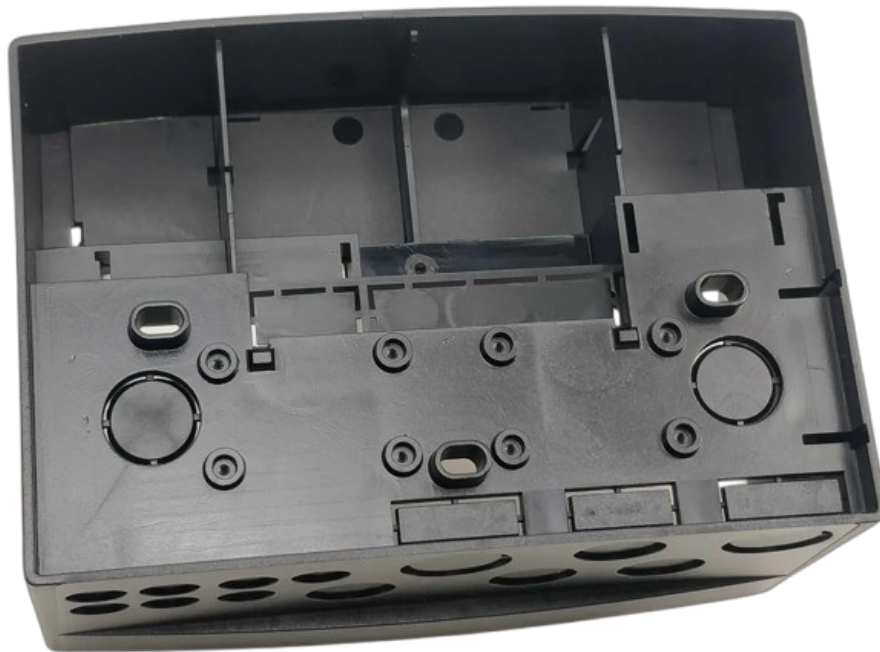
[Home](#) » [Danfoss](#) » Danfoss 087R9519 Socket for Wall Mounting User Guide 

### Contents

- [1 Danfoss 087R9519 Socket for Wall Mounting](#)
- [2 Specifications](#)
- [3 Product Usage Instructions](#)
- [4 Usage Instructions](#)
- [5 Dimension](#)
- [6 Frequently Asked Questions](#)
- [7 Documents / Resources](#)
  - [7.1 References](#)

*Danfoss*

**Danfoss 087R9519 Socket for Wall Mounting**



## Specifications

- **Model:** ECL Comfort 200/300
- **Part Number:** 087r9519
- **Voltage Options:** 230 V a.c. or 24 V a.c.

## Product Usage Instructions

### Mounting Guide

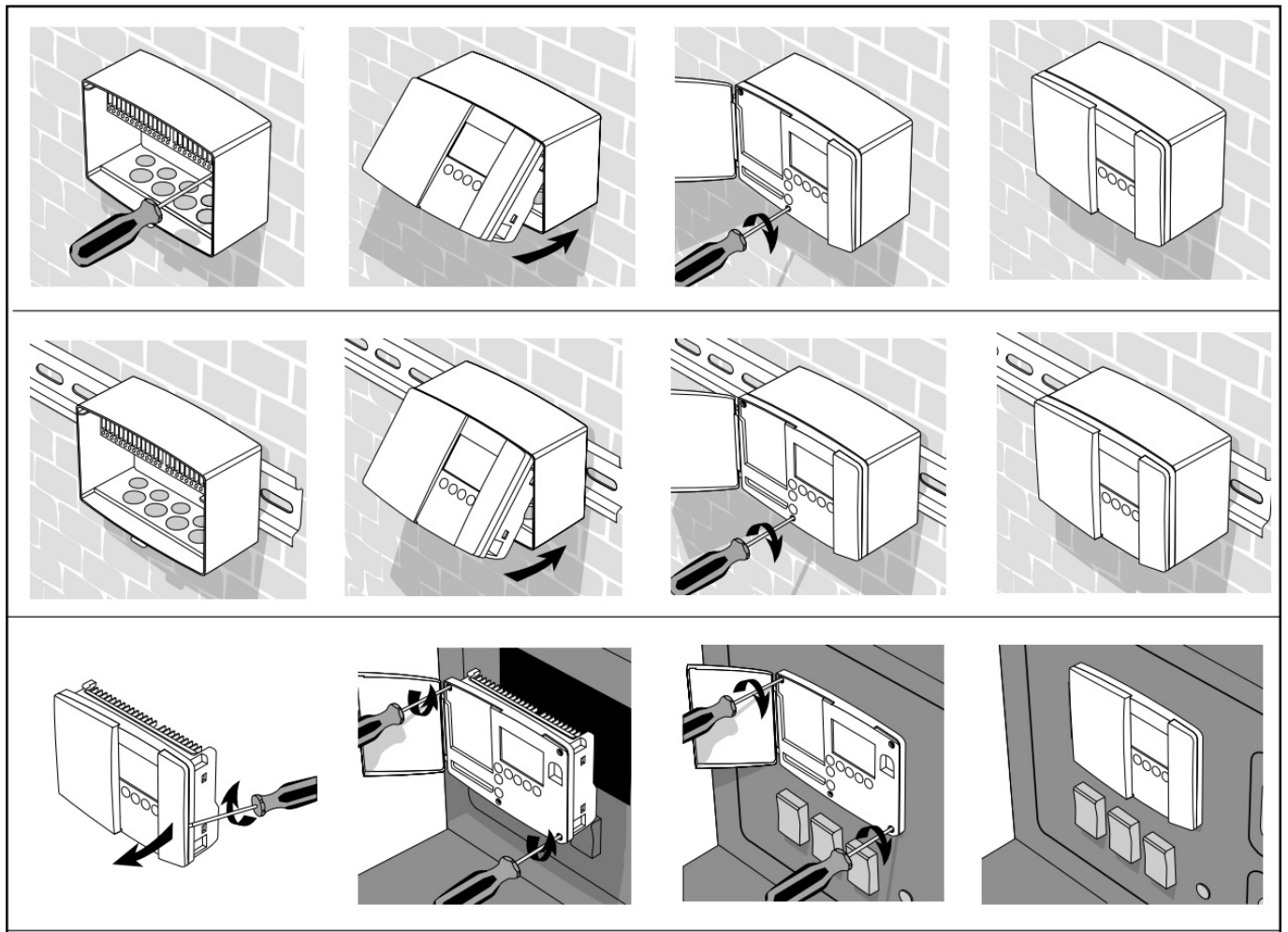
1. Identify a suitable location for mounting the device.
2. Ensure the power source matches the voltage requirement of the model (230 V a.c. or 24 V a.c.).
3. Securely mount the ECL Comfort unit using appropriate mounting hardware.

### Connecting BC-HM

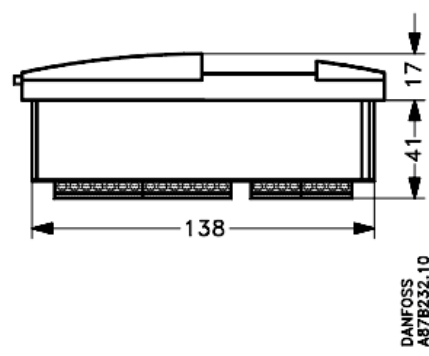
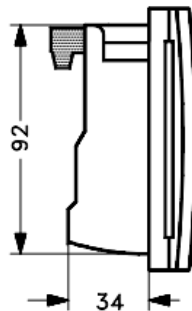
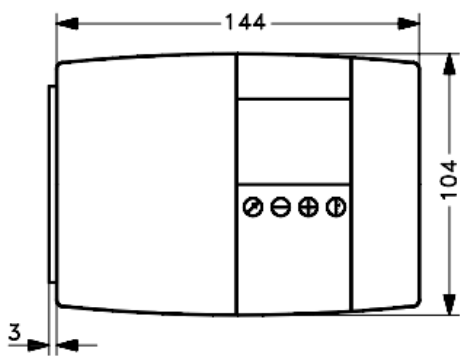
When connecting the BC-HM module to the ECL Comfort unit, follow these instructions

1. Ensure the power is switched off before making any connections
2. Connect the BC-HM module to the designated port on the ECL Comfort unit.
3. Verify that the connection is secure before powering on the system.

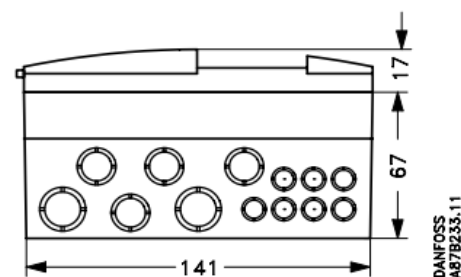
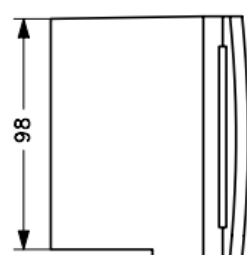
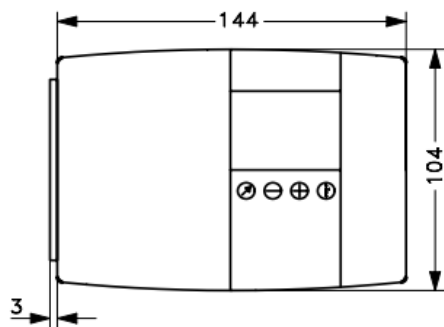
## Usage Instructions



## Dimension



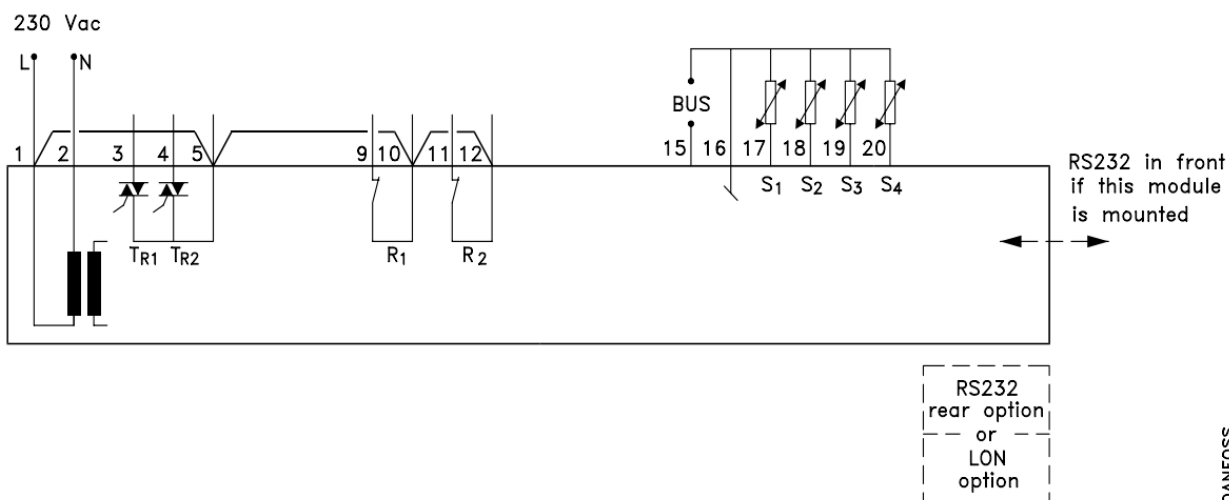
DANFOSS  
A87B232.10



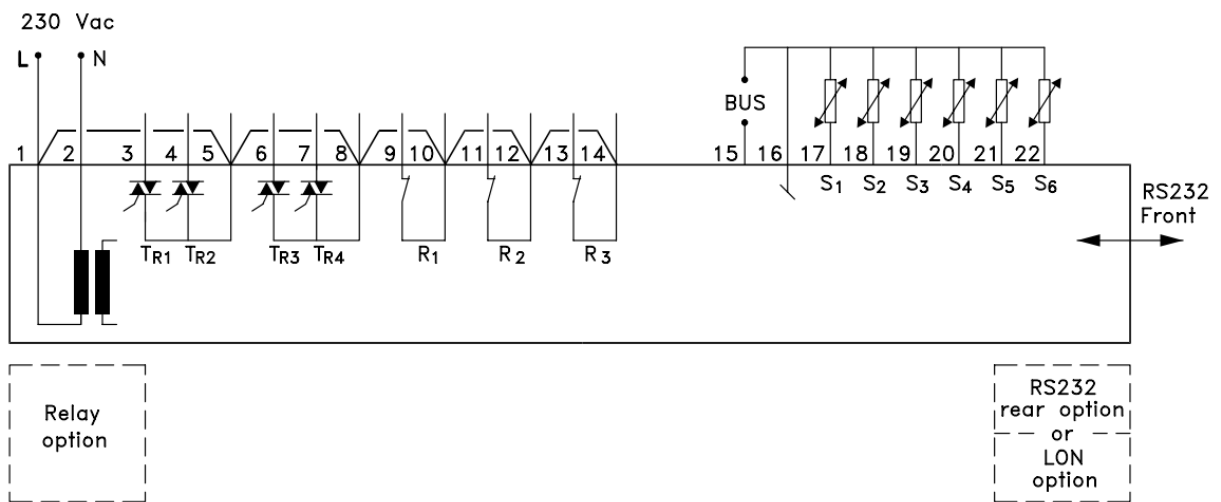
DANFOSS  
A87B233.11

## • 230 V a.c

### ◦ ECL Comfort 200



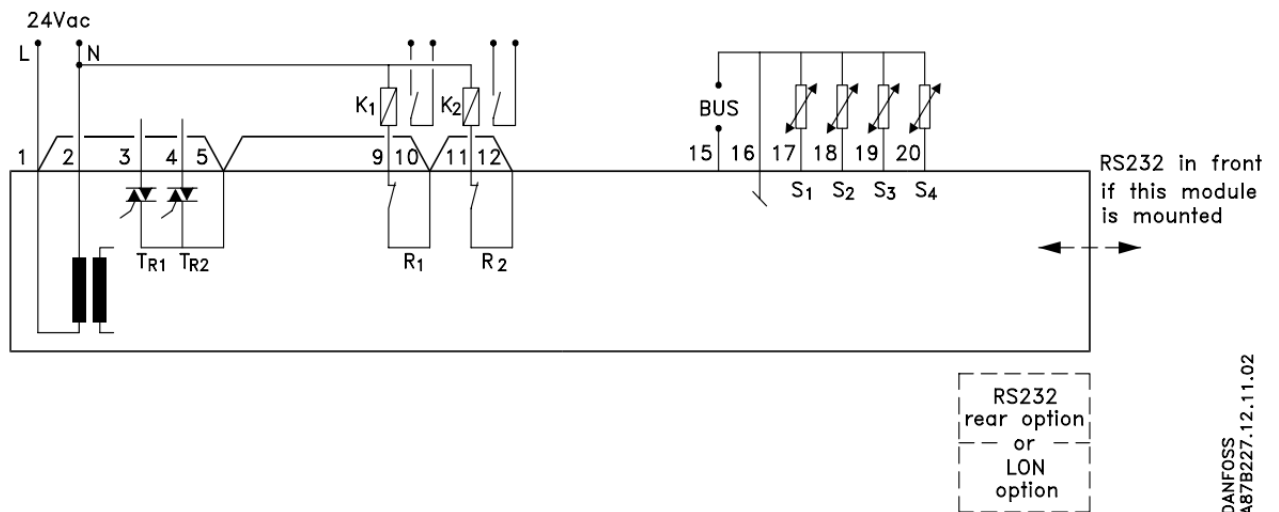
### ◦ ECL Comfort 300



DANFOSS  
A87B202.13.10.02

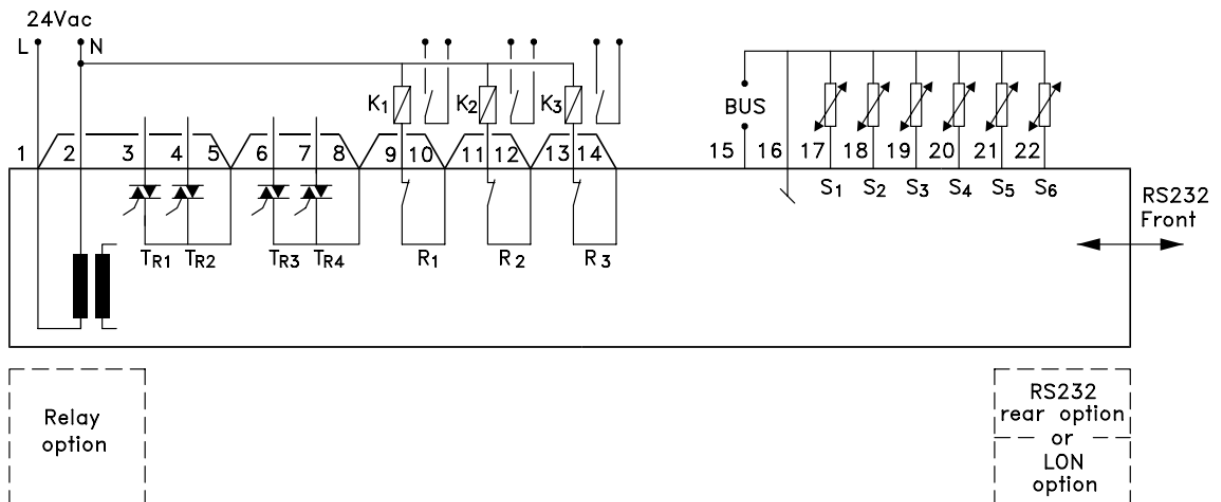
## • 24 V a.c.

### ◦ ECL Comfort 200



DANFOSS  
A87B227.12.11.02

### ◦ ECL Comfort 300



DANFOSS  
A87B228.13.10.02

## • VI.7B.B2.00 © Danfoss 00/10

## Frequently Asked Questions

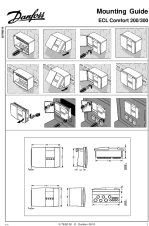
### • Q: What should I do if the device does not power on?

- A: Check the power source and ensure it matches the voltage requirements of the ECL Comfort unit. Also, verify that all connections are secure.

### • Q: Can I use the ECL Comfort unit with both 230 V a.c. and 24 V a.c? power sources?

- A: No. You should select the appropriate model based on the voltage available in your setup.

## Documents / Resources

	<p><a href="#">Danfoss 087R9519 Socket for Wall Mounting</a> [pdf] User Guide</p> <p>087R9519, BC-HM, 087R9519 Socket for Wall Mounting, 087R9519, Socket for Wall Mounting, f or Wall Mounting, Wall Mounting</p>
---	--

## References

- [User Manual](#)

### Manuals+, Privacy Policy

This website is an independent publication and is neither affiliated with nor endorsed by any of the trademark owners. The "Bluetooth®" word mark and logos are registered trademarks owned by Bluetooth SIG, Inc. The "Wi-Fi®" word mark and logos are registered trademarks owned by the Wi-Fi Alliance. Any use of these marks on this website does not imply any affiliation with or endorsement.