



Danfoss 087H3236 ECL Mounting Kit Installation Guide

[Home](#) » [Danfoss](#) » Danfoss 087H3236 ECL Mounting Kit Installation Guide 

Contents

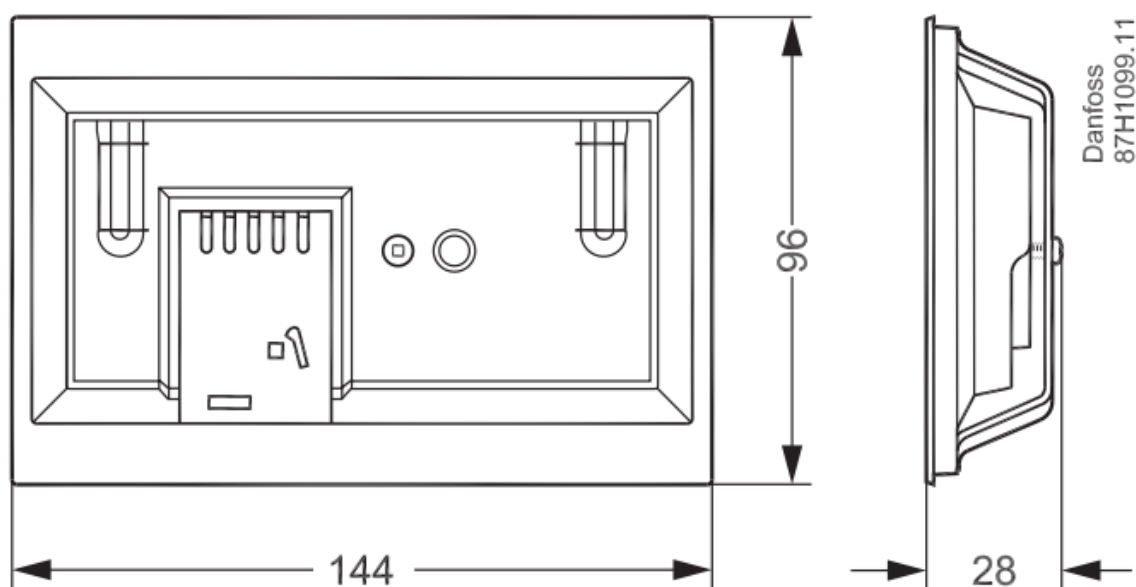
- [1 Danfoss 087H3236 ECL Mounting Kit](#)
- [2 Dimension](#)
- [3 Installation Instruction](#)
- [4 Specifications](#)
- [5 Product Usage Instructions](#)
- [6 Frequently Asked Questions](#)
- [7 Documents / Resources](#)
 - [7.1 References](#)



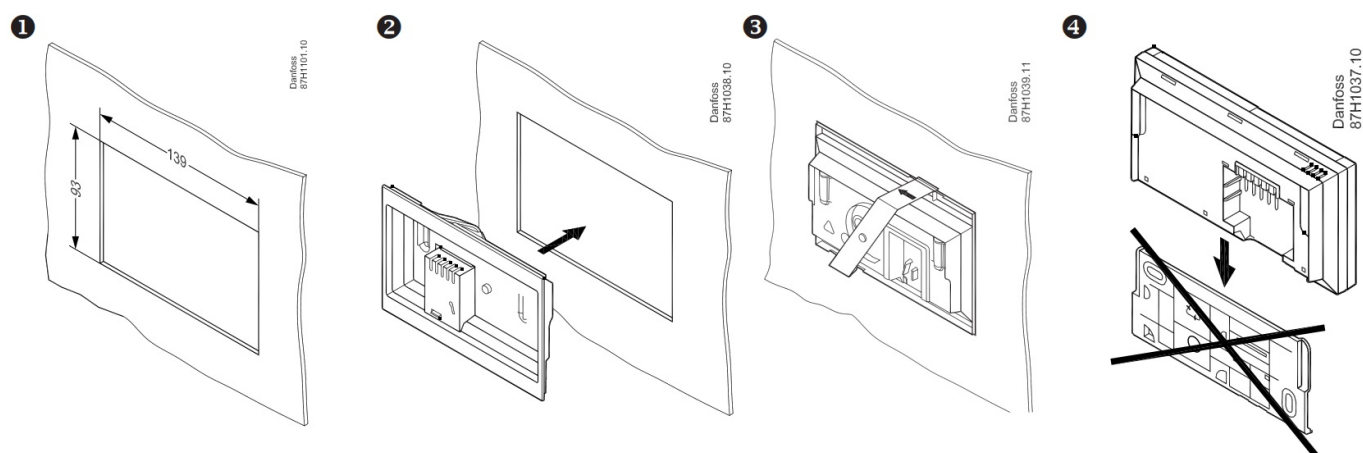
Danfoss 087H3236 ECL Mounting Kit

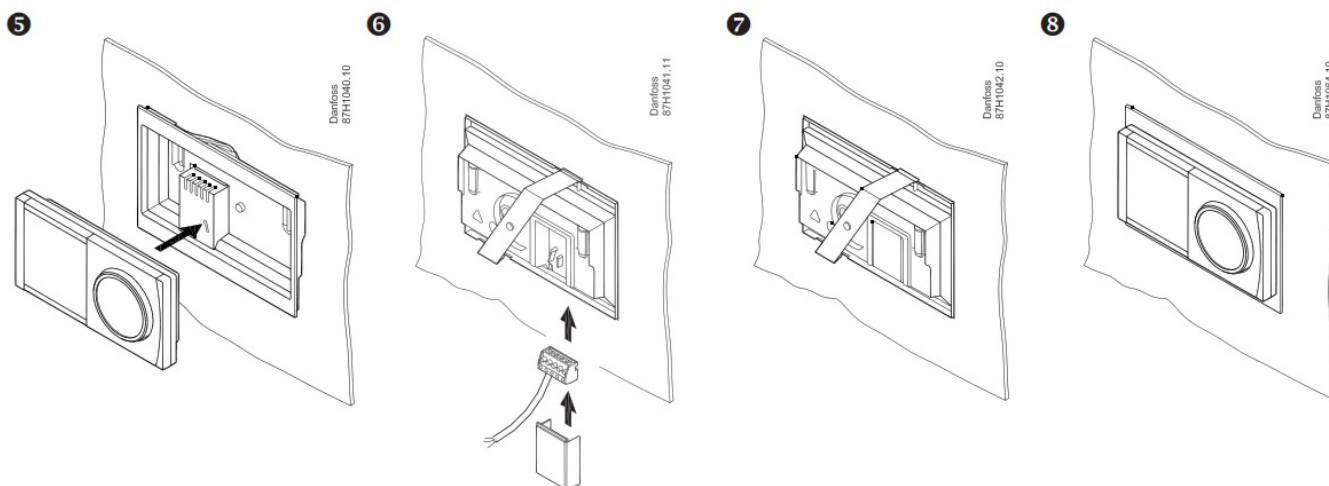


Dimension



Installation Instruction





Specifications

- **Product Name:** ECA 30 / 31 Frame Kit
- **Code Number:** 087H3236
- **Manufacturer:** Danfoss
- **Website:** www.heating.danfoss.com
- **YouTube Channel:** [DanfossHeating](https://www.youtube.com/user/DanfossHeating)

Product Usage Instructions

Step 1: Unboxing and Inspection

Open the package containing the ECA 30 / 31 Frame Kit and inspect all components for any damage.

Step 2: Assembly

Follow the detailed assembly instructions provided in the installation guide to correctly assemble the frame kit.

Step 3: Mounting

Securely mount the assembled frame kit at the desired location following the recommended guidelines.

Step 4: Testing

After installation, test the frame kit to ensure proper functionality and alignment.

Step 5: Maintenance

Regularly inspect and maintain the ECA 30 / 31 Frame Kit according to the maintenance instructions in the user manual.

- ECA 30 / 31: www.heating.danfoss.com
- <https://www.youtube.com/user/DanfossHeating> > Playlists -> How-to Videos -> District Energy installation videos

Danfoss A/S

Heating Segment • danfoss.com • +45 7488 2222 • E-Mail: heating@danfoss.com

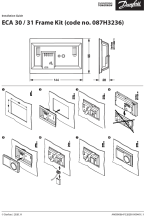
Danfoss can accept no responsibility for possible errors in catalogues, brochures, and other printed material. Danfoss reserves the right to alter its products without notice. This also applies to products already on order provided that such alterations can be made without subsequential changes being necessary in specifications already agreed. All trademarks in this material are the property of the respective companies. Danfoss and all Danfoss logotypes are trademarks of Danfoss A/S. All rights reserved.

Frequently Asked Questions

Q: Where can I find additional installation videos for the District Energy setup?

A: You can visit Danfoss' YouTube channel, navigate to Playlists, then How-to Videos, and finally District Energy installation videos.

Documents / Resources

	<p>Danfoss 087H3236 ECL Mounting Kit [pdf] Installation Guide 087H3236, 087H9012, 087H3236 ECL Mounting Kit, 087H3236, ECL Mounting Kit, Mounting Kit , Kit</p>
---	---

References

-  [Danfoss Climate Solutions for heating | Efficient solutions for superior comfort | Danfoss](#)
- [User Manual](#)

[Manuals+](#), [Privacy Policy](#)

This website is an independent publication and is neither affiliated with nor endorsed by any of the trademark owners. The "Bluetooth®" word mark and logos are registered trademarks owned by Bluetooth SIG, Inc. The "Wi-Fi®" word mark and logos are registered trademarks owned by the Wi-Fi Alliance. Any use of these marks on this website does not imply any affiliation with or endorsement.