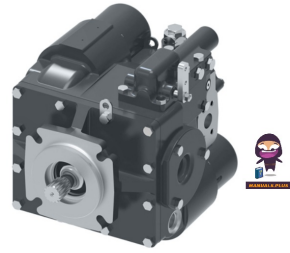



Danfoss 0160-903
Closed Circuit Axial
Piston Pump



Danfoss 0160-903 Closed Circuit Axial Piston Pump Installation Guide

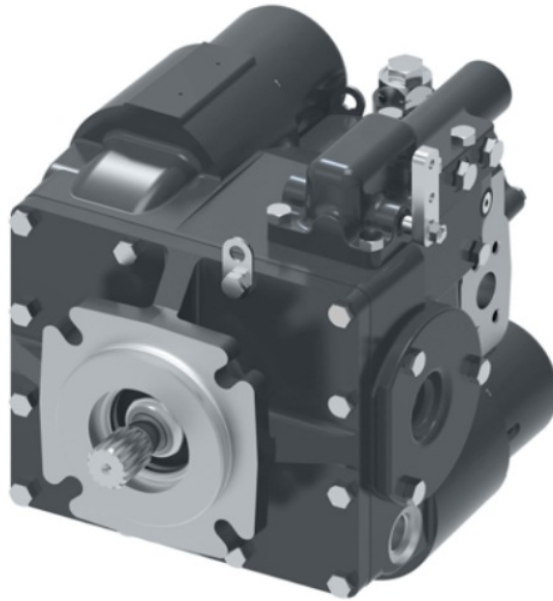
[Home](#) » [Danfoss](#) » Danfoss 0160-903 Closed Circuit Axial Piston Pump Installation Guide 

Contents

- [1 Danfoss 0160-903 Closed Circuit Axial Piston Pump](#)
- [2 Specifications](#)
- [3 Introduction](#)
- [4 Shimming procedures](#)
- [5 Products we offer](#)
- [6 Components](#)
- [7 FAQs](#)
- [8 Documents / Resources](#)
 - [8.1 References](#)
- [9 Related Posts](#)



Danfoss 0160-903 Closed Circuit Axial Piston Pump



Specifications

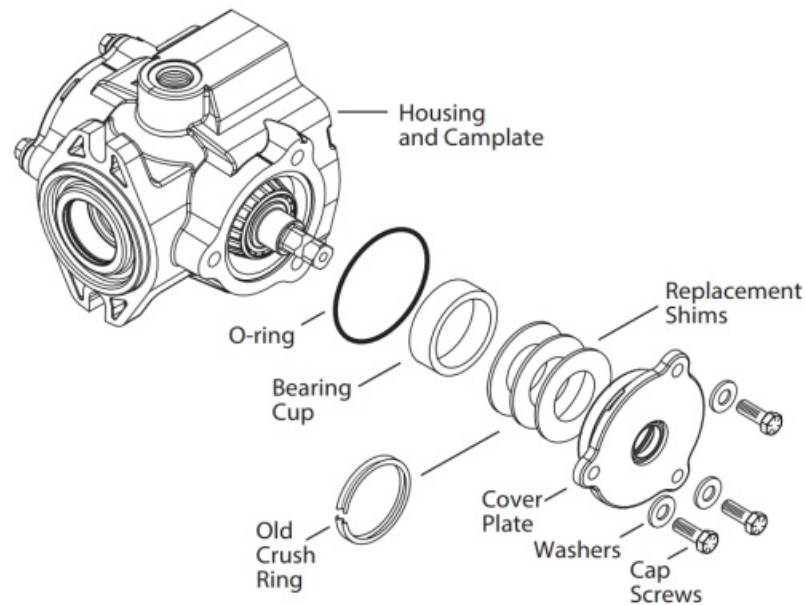
- Product Name: Design Shimming Process Kit
- Model Number: 70160-903-02
- Manufacturer: Danfoss Corporation
- Copyright: 1999, All Rights Reserved
- Country of Origin: USA

Introduction

This shim kit is to replace the crush ring within the trunnion cover. If the camplate, trunnion cover or housing is replaced during servicing, the old crush ring can no longer be used to assure proper preload.

Shimming procedures

1. Measure the thickness of the existing crush ring.
2. To obtain a starting point stack shims to the measurement of existing crush ring. Then insert shims into the trunnion cover in the same location as the removed crush ring.
3. Assemble the housing sub-assembly consisting of the housing, camplate, bearings, and trunnion covers. Install the trunnion cover bolts and torque to 56,9 N·m [42 lbf·ft].
4. With a torque wrench, check the torque required to rotate the control shaft. The specified torque level is $2,26 \pm 0,6$ N·m 20 ± 5 lbf·in. – If the torque level is too low, add additional shims and repeat steps 3 and until the specified torque levels are achieved. – If the torque level is too high, remove the shims and repeat steps 2 and 3 until the specified torque levels are achieved.
5. Finish the assembly of the pump.



Products we offer

- Cartridge valves
- DCV directional control valves
- Electric converters
- Electric machines
- Electric motors
- Gear motors
- Gear pumps
- Hydraulic integrated circuits (HICs)
- Hydrostatic motors
- Hydrostatic pumps
- Orbital motors
- PLUS+1° controllers
- PLUS+1° displays
- PLUS +1* joysticks and pedals
- PLUS+1° operator interfaces
- PLUS+1* sensors
- PLUS+1* software
- PLUS+1* software services, support, and training
- Position controls and sensors
- PVG proportional valves
- Steering components and systems
- Telematics

Danfoss Power Solutions is a global manufacturer and supplier of high-quality hydraulic and electric components. We specialize in providing state-of-the-art technology and solutions that excel in the harsh operating conditions of the mobile off-highway market as well as the marine sector. Building on our extensive applications expertise, we work closely with you to ensure exceptional performance for a broad range of applications. We help you and other customers around the world speed up system development, reduce cost, and bring vehicles and

vessels to market faster. Danfoss Power Solutions – your strongest partner in mobile hydraulics and mobile electrification.

Go to www.danfoss.com for further product information.

We offer you expert worldwide support for ensuring the best possible solutions for outstanding performance. And with an extensive network of Global Service Partners, we also provide you with comprehensive global service for all of our components.

Components

- Housing and Camplate
- O-ring Bearing Cup
- Old Crush Ring
- Replacement Shims
- Cover Plate
- Washers
- Cap Screws

Go to www.danfoss.com for further product information.

Hydro-Gear

www.hydro-gear.com

Daikin-Sauer-Danfoss

www.daikin-sauer-danfoss.com

FAQs

Q: How often should I replace the crush ring with this shim kit?

A: The crush ring should be replaced whenever the camplate, trunnion cover, or housing is replaced during servicing to ensure proper preload.

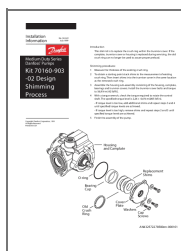
Q: Can I reuse the old crush ring?

A: No, the old crush ring cannot be reused once the components have been replaced. It is important to use the replacement shims provided in the kit.

Q: Where can I find more information about Danfoss products and services?

A: For more information, visit the official Danfoss website or contact their local addresses listed in the manual.

Documents / Resources



[Danfoss 0160-903 Closed Circuit Axial Piston Pump](#) [pdf] Installation Guide
70160-903, 0160-903 Closed Circuit Axial Piston Pump, 0160-903, Closed Circuit Axial Piston Pump, Axial Piston Pump, Piston Pump, Pump

References

- [DSD | Home](#)
- [User Manual](#)

[Manuals+](#), [Privacy Policy](#)

This website is an independent publication and is neither affiliated with nor endorsed by any of the trademark owners. The "Bluetooth®" word mark and logos are registered trademarks owned by Bluetooth SIG, Inc. The "Wi-Fi®" word mark and logos are registered trademarks owned by the Wi-Fi Alliance. Any use of these marks on this website does not imply any affiliation with or endorsement.