



Danby DDR30A1GP Premiere Portable Dehumidifier User Guide

[Home](#) » [Danby](#) » Danby DDR30A1GP Premiere Portable Dehumidifier User Guide 

Contents

- [1 Danby DDR30A1GP Premiere Portable Dehumidifier User Guide](#)
- [2 INSTALLATION INSTRUCTIONS](#)
- [3 FEATURES](#)
- [4 OPERATING INSTRUCTIONS \(contd\)](#)
- [5 CARE AND MAINTENANCE](#)
- [6 TROUBLESHOOTING](#)
- [7 Related Posts](#)



Danby DDR30A1GP Premiere Portable Dehumidifier User Guide

**CAUTION**

Read and follow all safety rules and operating instructions before the first use of this product.

KEEP THESE INSTRUCTIONS FOR FUTURE REFERENCE

If the Dehumidifier changes ownership, be sure this manual accompanies the unit.

WELCOME

Thank you for choosing a Danby appliance to provide you and your family with all of the "Home Comfort" requirements of your home, cottage, or office. This Owner's Use and Care Guide will provide you with valuable information necessary for the proper care and maintenance of your new appliance. If properly maintained, your Danby appliance will give you many years of trouble-free operation. Please take a few moments to read the instructions thoroughly and familiarize yourself with all of the operational aspects of this appliance. This unit can be conveniently moved from room to room within your home and set up in just minutes. For easy reference, may we suggest you attach a copy of your sales slip/receipt to this page, along with the following information, located on the rear wall of the water tank compartment?

Model Number: _ Serial Number: _____

Date of Purchase: _____

This information will be necessary if your unit requires servicing and/or for general inquiries. To contact a Customer Service Representative, call Danby TOLL FREE: 1-800-26- Danbr (1-800-263-2629)

KEEP THESE INSTRUCTIONS FOR FUTURE REFERENCE

CAUTION: Do not leave this unit unattended or operate in an area where people or animals may not be able to react quickly. A failed unit may cause overheating, resulting in personal injury or property damage.

IMPORTANT SAFETY INFORMATION**NOTE**

The WARNING instructions issued in this manual are not meant to cover all possible conditions and situations that may occur. It must be understood that common sense, caution, and carefulness are factors that cannot be built into all appliances. These factors must be supplied by the person(s) installing, maintaining, or operating the appliance. Failure to install, maintain, and/or operate the equipment according to the manufacturer's instructions may result in conditions that can produce bodily injury and/or property damage. Contact your dealer, service agent, or manufacturer about any problems or conditions you do not fully understand.

For Danby Customer Service call-800-26-Danbr (1-800-263-2629) ELECTRICAL To reduce the risk of fire, electric

shock, or personal injury, all wiring and grounding REQUIREMENTS must conform with the latest edition of Local and National electric codes.

- It is the customer's responsibility to have the wiring and fuses checked by a qualified electrician to make sure adequate electrical power is available.
- This appliance is designed to operate on a separate branch, polarized, three-wire, effectively grounded 120 Volt 60Hertz (alternating current) circuit protected by a 15 ampere fuse or equivalent fuse or circuit breaker.
- The three-prong grounded plug on the power cord should be plugged directly into a polarized, three-slot, effectively grounded receptacle rated 15/120 V.A.C.

FOR YOUR SAFETY: To reduce the risk of fire or explosion, do not store or use gasoline or other flammable vapors or liquids in the vicinity of this or any other appliance.

GROUNDING Improper connection of the equipment-grounding conductor can result in a risk of ELECTRICAL SHOCK. Check with a qualified electrician or serviceman if you are in doubt as to whether your appliance outlets are properly grounded.

- This appliance must be grounded. In the event of malfunction or breakdown, grounding will reduce the risk of electrical shock by providing a path of least resistance to electrical current. This appliance is equipped with a cord having an equipment-grounding conductor and 3 prong grounding plug.
- The plug must be connected to an outlet that is properly installed and grounded in accordance with all local codes and ordinances.
- Do not modify the plug provided with this appliance. If it will not fit the outlet, have a proper outlet installed by a qualified electrician.
- If the household electrical supply does not meet the above specifications, or if you are not sure your home has an effective ground, have a qualified electrician or your local electrical utility company check it and correct any problems.

INSTALLATION INSTRUCTIONS

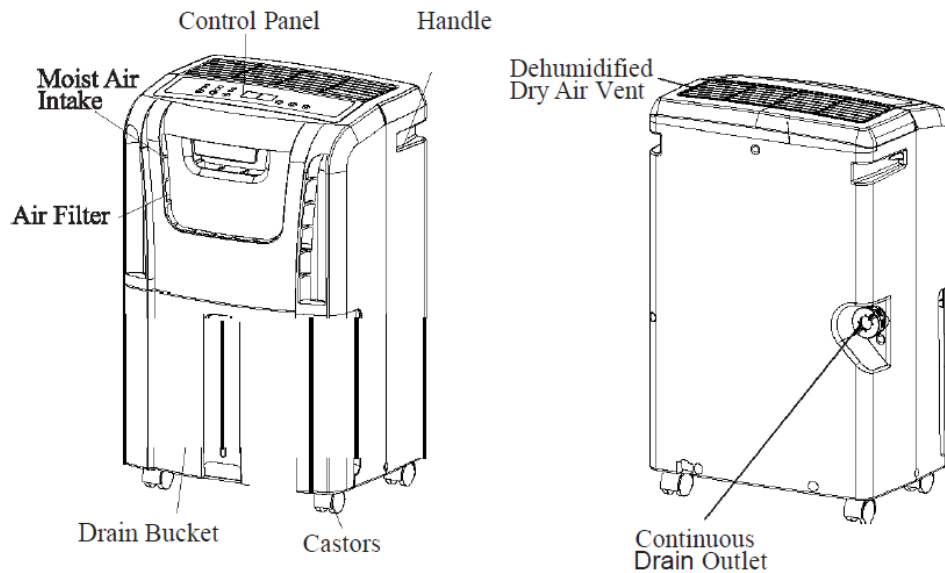
LOCATION

- Select a suitable location, making sure you have easy access to an electrical outlet (avoid the use of extension cords). If it is absolutely necessary to use an extension cord, use an approved "air conditioner" heavy-duty extension cord ONLY (available at most local hardware stores).
- Make sure there are no obstructions restricting airflow through the front air intake grill. Maintain a minimum clearance of at least 20 cm (8") between adjacent walls and the back of the unit to allow for proper air circulation and maximum efficiency. To obtain maximum operating efficiency from your unit, the recommended (room ambient) operating temperatures should be between 6°C (42.8°F) - 35°C (95°F).
- It is important to remember the efficiency of a dehumidifier will be affected/influenced by the rate at which new humid air (moisture) is allowed to infiltrate the same space/area. To maintain efficiency, the dehumidifier must be operated in an enclosed area. Keep all doors and windows closed.

FEATURES

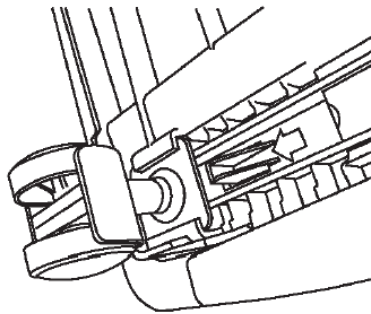
- Soft touch (Electronic) Control Key Pads Full Bucket Indicator Light
- Auto-Sensing Humidity Control

- Easy Roll Castors (4)
- Adjustable Humidity Settings (30% – 90%)
- Front Mounted Water Tank (Removable)
- 2 Fan Speed Settings (High | Low)
- Direct Drain Option
- Delay Start Protection (Compressor)
- Quiet Operation
- Auto-Defrost (De-Icer)
- Removable Air Filter



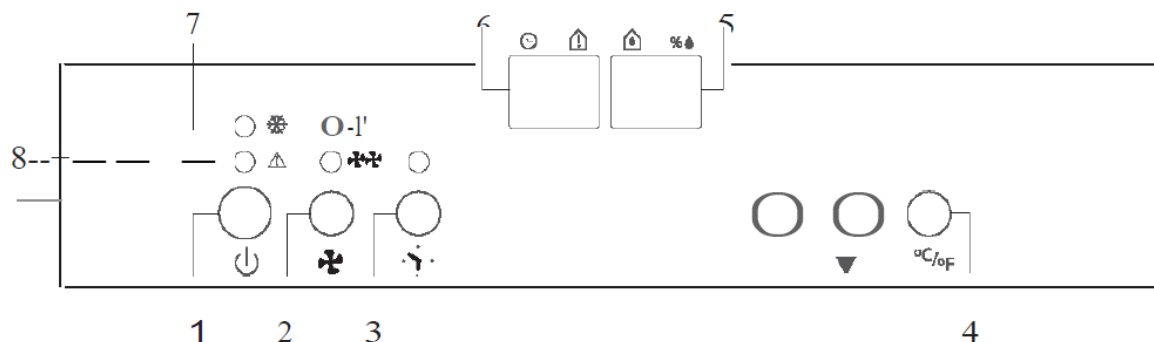
CASTER INSTALLATION

Caster installation is recommended to avoid damage to floors.



1. Remove the casters from the bucket of the dehumidifier.
2. Position the dehumidifier on its side.
3. Locate the arrow on the bottom of the dehumidifier and insert the caster according to the arrow direction.
4. Slide the caster in as far as it will go. The caster will snap into place.
5. Repeat steps 1 to 4 for the other 3 casters.

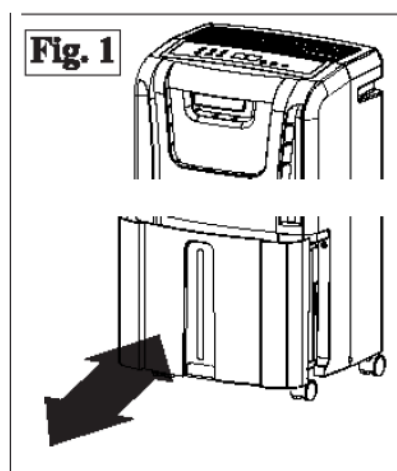
OPERATING INSTRUCTIONS



1. POWER Button: On | Off
2. FAN SPEED Button: High | Low
3. TIMER Button: When the unit is operating, press TIMER to set the number of hours desired until the unit will shut off. When the unit is on standby, press TIMER to set the number of hours desired until the unit will turn on. Setting timer from 1-24 hours. To cancel the timer, proceed as above but set the "timer off" to zero (0) hours.
4. °C/°F Button: Press the °C/°F button to toggle between Celsius and Fahrenheit.
5. SET HUMIDITY/CURRENT HUMIDITY DISPLAY: When the machine is running, it displays the current humidity. Press the UP or DOWN buttons to select the humidity setting. The humidity is adjusted in increments of 5% by each press. The adjustable range is between 30% RH to 90% RH. 10 seconds after setting humidity, the display will change back to the current humidity.
6. CURRENT TEMP/ TIMER SET DISPLAY: When the machine is running, it displays the current temperature. Press the TIMER button to set the machine to shut off automatically after a specified amount of time. 10 seconds after displaying the timer, the display will change back to the current temperature.
7. DEFROST LIGHT: When the temperature is low, the unit enters defrost mode, and defrost light illuminates.
8. BUCKET FULL LIGHT: When the water tank is full, the bucket full light illuminates.

OPERATING INSTRUCTIONS (contd)

START OPERATION



1. Place the product in an upright position on a flat, stable, and heat-resistant surface. Make sure there is nothing flammable or heat sensitive within (39 inches). Operating the product in any other position could cause a hazard.
2. Insert the plug into a suitable wall socket. The dehumidifier is suitable for rating an electricity supply having the

same voltage as shown on its rating label.

3. Make sure the water tank is correctly located. After switching on the machine for the first time, if the 'Bucket Full' is able to move freely, then return the water tank to the correct position (Fig. 1).

WATER FULL INDICATOR LIGHT (RED)

When the water tank is full and/or incorrectly positioned inside the cabinet, the water full red light turns on and remains on until such time that the tank is emptied and/or correctly re-positioned

This condition will result in the immediate shutdown of the dehumidifying system (both compressor and fan motor operations are terminated). This is a safety feature. When the water tank is emptied and correctly re-positioned, the dehumidifier will resume operation automatically.

NOTE: It may take several minutes before operating conditions resume.

BUCKET FULL LIGHT



- When the water tank is full the machine will stop and the "Bucket Full" light will illuminate.
- The water tank should be carefully removed from the machine by sliding it outward from the front of the unit, and it should be emptied. When the empty tank is replaced properly in the machine, the unit will start up and run normally (Fig. 2).

NOTE: Please use both hands to carefully empty the water tank

Default Setting Each time the unit is disconnected/re-connected and/or in the event of a power failure, the electronic circuit board automatically defaults to the following factory setting:

Humidity Setting: 60%

Fan Speed: Low

NOTE: In the event of a power failure, the unit will default to the last program setting that was used when power is restored.

WATER TANK PROTECTION: Installation of the water tank is crucial in maintaining a reliable dehumidifier OPERATION. The water tank holds accumulated condensed water and contains a safety switch, that controls both the water level and operation of the dehumidification process. When the water tank is full and/or accidentally displaced inside the cabinet, the float switch actuator (inside the tank) breaks contact with the safety switch. This condition results in the immediate shutdown of the compressor and fan motor system, preventing moisture from being condensed.

NOTE: Never tamper with or attempt to defeat the water level (safety) float switch system.

DEFROST

When the machine is operated at low temperatures (less than 18°C (64.4°F)), the surface of the evaporator may accumulate a layer of frost which would reduce the efficiency of the machine. When this happens the machine will go into periodic defrost mode. The machine will operate in temperatures down to 5°C (41°F). The time taken to defrost may vary. If the machine freezes up, it should be turned off at the power supply and restarted. If the room temperature remains below 5°C (41°F) the machine should be switched off.

DEHUMIDIFYING

Dehumidifying is a means of removing moisture from the air. A dehumidifier will help to protect your home and valued possessions from damage (swelling) caused by moisture in the air. Essentially a dehumidifier removes moisture from the air as the moist air passes over a dehumidifying (evaporator) coil. Moisture is condensed on the evaporator coil, drained, and collected inside an internal (removable) water tank located at the front of the unit. The exhausted air being returned into the room environment is elevated several degrees, causing the surrounding air temperature to increase (slightly).

This process also contributes to lowering the relative humidity of the surrounding air.

DEHUMIDIFYING MODE SELECTION

1. To turn the unit on, press the ON-OFF button.
2. Press the humidity or buttons to select a desired RH operating value (30%-90%).

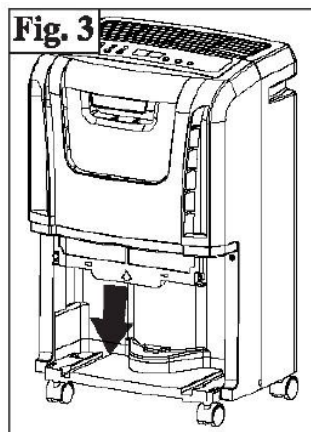
FAN SPEED SELECTION: Select a fan speed on the keypad. The speed you select is identified by the (illuminated) indicator light located directly above the selection made.

AIR FILTER

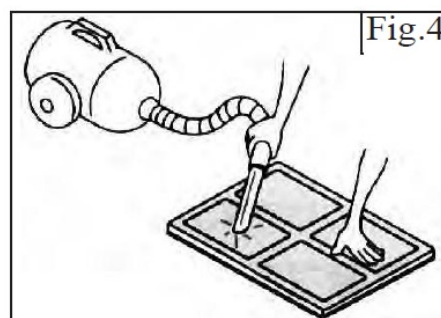
Your dehumidifier features a removable Air Filter. This filter is located at the front of the unit (behind the air intake grill) directly above the water tank compartment. The air filter plays an important role in helping to reduce (minimize) dust/dirt particles from the surrounding environment. A blocked/clogged air filter reduces air intake, impacting negatively on operating efficiency. To maintain maximum operating efficiency, the filter must be checked and cleaned regularly (every 2 weeks). More frequent cleaning may be required depending on indoor air quality.

IMPORTANT: Never operate the unit without the air filter in place.

AIR FILTER CLEANING STEPS



1. Pull the air filter out gently (Fig. 3).

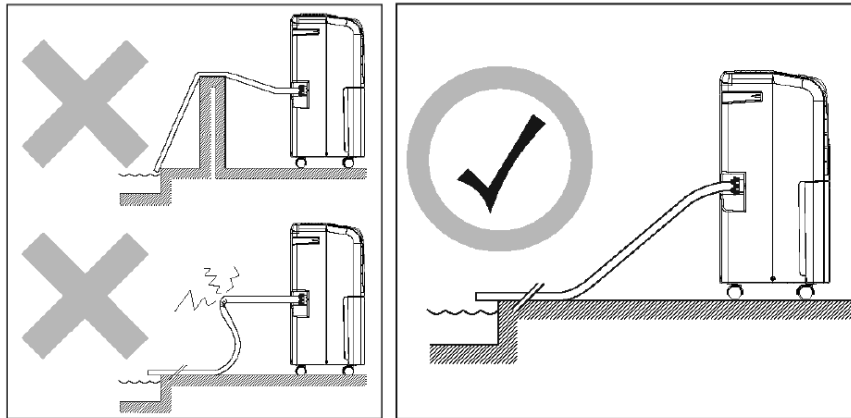


2. Clean the filter with a vacuum cleaner, or wash it with clean water and dry it with a dry cloth.
3. Put the clean air filter back in place and continue to operate the dehumidifier.

OPERATING INSTRUCTIONS (contd)

INSTALLING PVC When using the continuous drain function, the PVC hose must be placed horizontally below the drainage hole. Avoid uneven ground and folding the hose.

NOTE: Should you damage or replace the pvc drain hose, a standard garden hose can be used.

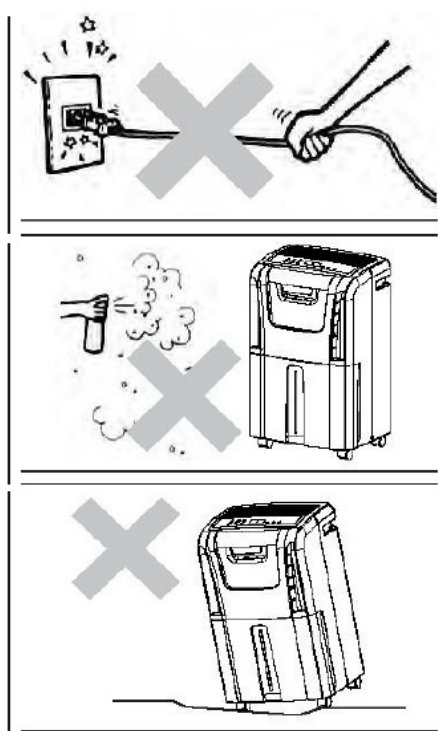


DRAIN The function of continuous drain can be performed using the following steps:

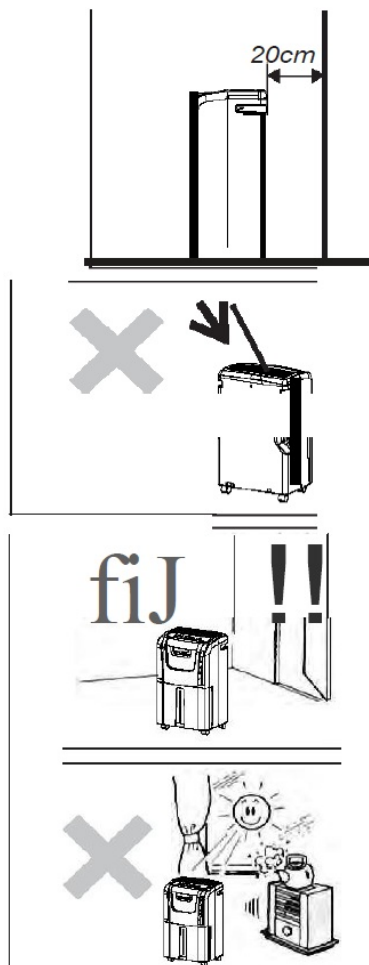
1. To save having to periodically empty the water tank, this unit can D · h Back of the unit IFig AI be configured for the continuous drain. You can use the supplied drain ram
2. Unscrew and remove the drain cover at the rear of the unit (Fig. A). cover
3. Remove the soft rubber stopper, and place it in the water tank for safekeeping (Fig. B).
4. Insert the drain hose through the hole of the drain cover (Fig. C).
5. Ensure the rubber seal ring is properly seated at the end of the Tig]: listen to the drain cover in a clockwise direction onto the rear of the hose as shown in Fig. C. w
6. Connect the drain hose to the drain port (Fig. D). The unit (Fig. D).
7. Place the bucket in its original location (Fig. E).

CAUTIONS

1. DO NOT pull on the power cord to avoid breakage, potential danger, or injury.



2. DO NOT use insect/oil/paint spray around the machine; these products might cause damage to plastic parts or start a fire.
3. DO NOT place the unit on uneven ground to avoid shaking, noise, and water leakage.
4. Always keep the unit 20cm or more from the wall to dissipate heat properly.
5. DO NOT drop anything into the machine.



6. Close all windows to allow for the maximum possible efficiency or removal of moisture. Keep the machine away from any type of heat source.
7. When moving or putting it in storage, do not place the dehumidifier on its side, or upside down, to avoid

shaking.

CARE AND MAINTENANCE

CLEANING CAUTION: Before attempting to clean and/or service this unit, always disconnect the power supply cord from the electrical supply outlet.

1. DO NOT use oil, kerosene, paint thinner, or any other chemicals to clean this unit, as these substances will age/reform some plastic components and luster finish.
2. Never attempt to clean the unit by pouring water over any of the surface areas, as this will cause deterioration of electrical components and wing insulation.
3. Use only a mild dishwashing detergent, lukewarm water, and a soft cloth to wipe the exterior surface of the unit and dry thoroughly.

STORAGE When the dehumidifier is not being used for long time periods, please follow these instructions:

4. Disconnect the power cord from the power supply.
5. Empty the water tank and wipe (clean) thoroughly.
6. Clean the air filter thoroughly.
7. Re-package the unit in the original carton.
8. Store the unit upright in a dry location

TROUBLESHOOTING

Occasionally, you may encounter some problems that are of a minor nature and a service call may not be necessary. Use this troubleshooting guide to identify possible problems you may be experiencing. If the unit continues to operate improperly, call your local Danby Service Depot or 1-800-263-2629.

PROBLEM	POSSIBLE CAUSE
1) Unit will not operate.	<ul style="list-style-type: none">• Check the power cord connection.• Check the electrical outlet for a blown fuse.• Check if the water tank is full if yes, empty it).• Check water tank is properly installed.
2) Dehumidifying capacity (moisture removal) low.	<ul style="list-style-type: none">• Air filter is dirty and/or blocked.• Ambient room temperature too low (below 5°C/41°F).• Poor air flow circulation obstruction of the front grill.• Relative humidity in the surrounding environment is very low.
3) Relative Humidity setting not reached after a long period of operation.	<ul style="list-style-type: none">• Check all doors and windows are closed.• Area/room is too large for the capacity of the dehumidifier.

PORTABLE DEHUMIDIFIER

The model number can be found on the serial plate located on the back panel of the unit. All repair parts are available for purchase or special order when you visit your nearest service depot. To request service and/or the

location of the service depot nearest you, call the TOLL FREE NUMBER. When requesting service or ordering parts, always provide the following information:

- Product Type
- Model Number
- Part Number
- Part Description

Danby Products Limited, Guelph, Ontario, Canada N1H 6Z9 Danby Products Inc. Findlay, Ohio, U.S.A.45840

Download PDF: [Danby DDR30A1GP Premiere Portable Dehumidifier User Guide](#)

Manuals+.