



## DALTON D0516 Smart Fingerprint Lock User Guide

[Home](#) » [Dalton](#) » DALTON D0516 Smart Fingerprint Lock User Guide 



### User Instruction Manual for D0516 Smart Fingerprint Lock (Glass Door)



#### Contents

- 1 D0516 Smart Fingerprint Lock
- 2 Safety and Precautions:
- 3 Pre-installation Tools:
- 4 Door Preparation:
- 5 Installation:
- 6 Programming:
- 7 Documents / Resources
  - 7.1 References

## D0516 Smart Fingerprint Lock


Thank you for choosing the DALTON D0516 Smart Fingerprint Lock for Glass Door. This manual provides guidance on how to install and use the lock, and includes important safety and precautionary measures. Please read this manual carefully before using the product to ensure proper operation and maximum safety.

### Safety and Precautions:

1. Read all instructions in their entirety to ensure that you have a complete understanding of the lock's features, installation requirements, and operation procedures.
2. We highly recommend seeking the assistance of a professional installer to ensure proper installation.
3. Before installation, please ensure that the lock and lock body are selected correctly according to the door opening direction. Failure to do so may result in improper function or damage to the lock.
4. Familiarize yourself with all warning and caution statements provided in this manual, as they are designed to protect you and others from harm or injury.
5. It is important to remind all family members of the safety precautions associated with using the lock, including keeping access to the back panel restricted and regularly checking the lock's settings to ensure they have not been altered without your knowledge.
6. To prevent unauthorized access, it is recommended to protect your user codes and master code.
7. Dispose of used batteries in accordance with local laws and regulations to avoid environmental hazards.

### CAUTION:

1. Keep the lock away from children to prevent any accidents.
2. Do not use any cleaning agents that contain corrosive chemicals to clean the lock. Use a soft cloth and mild detergent instead.
3. Do not attempt to disassemble or modify the lock in any way. Contact the manufacturer for any repairs or maintenance.
4. In case of emergency, use a backup mechanical key to unlock

 **Note:** different door types have different accessories, please check whether they match before starting the installation.

### Pre-installation Tools:

You will need:	Packaging Contents List:
<ul style="list-style-type: none"><li>• Phillips screwdriver is required. You can use either a manual or electric screwdriver, but avoid using a power drill.</li><li>• Level</li></ul>	<ul style="list-style-type: none"><li>• DALTON Smart Fingerprint Lock</li><li>• Mounting Plate</li><li>• USB Cable</li><li>• User Manual</li><li>• Screws</li></ul>

### Door Preparation:

Before starting the installation process, ensure that the direction of the main lock is consistent with the direction of the door. If they are different, follow these steps to change the direction of the main lock:

1. Remove the screws from the back part of the main lock and the screws from the front part.
2. Rotate the front part of the lock 180°.
3. Put the screws back onto the lock.

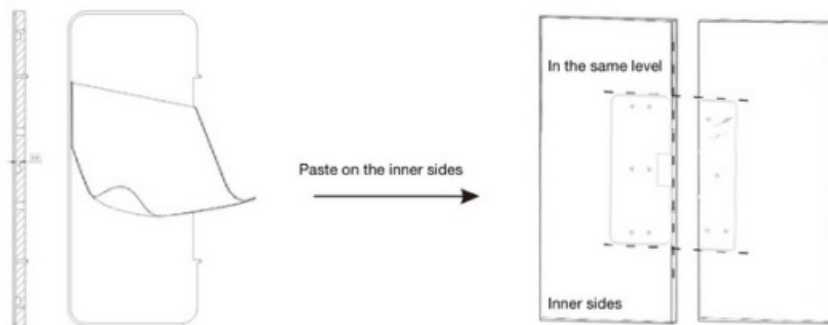
## Check Dimensions

- Verify that your glass door is suitable for the DALTON Smart Fingerprint Lock. The lock is designed to be installed on glass doors that are between 8-12mm in thickness.
- Clean the area where the lock will be mounted with a soft cloth and isopropyl alcohol.

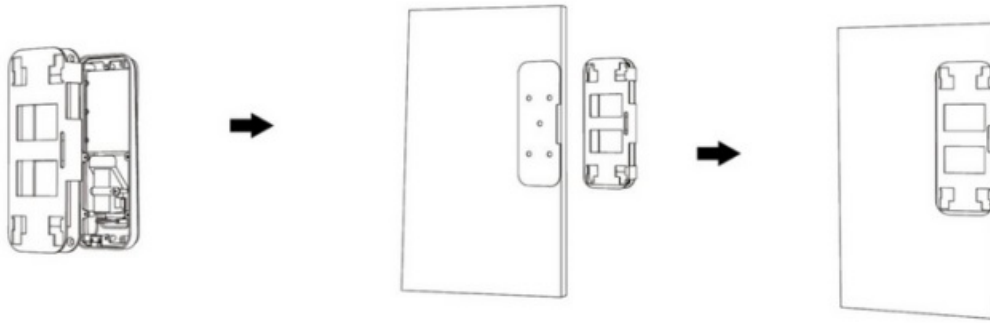


## Installation:

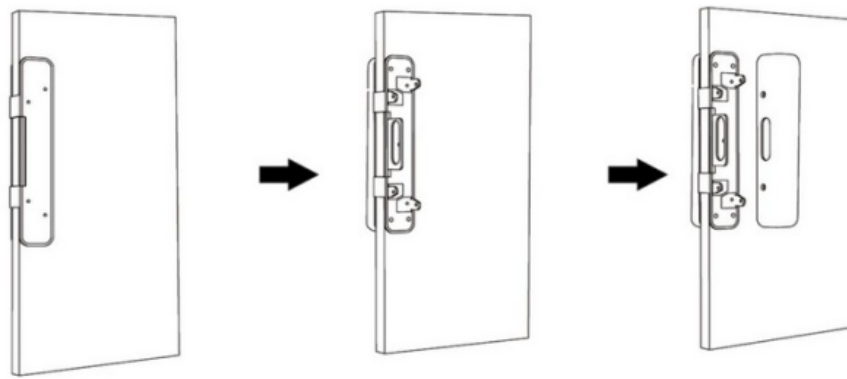
1. Remove the tape surface from the plates. Make sure that the small feet of the plates are attached to the edge of the door.
2. Before attaching the plates, ensure that the main lock and the second lock plates are level. This will help prevent any issues during lock installation.
3. Once the plates are level, apply pressure to the inner sides of the glass doors with strength to securely attach the plates.



1. Use a screwdriver to remove the back part of the primary lock, and detach the wire connecting the front and back parts.
2. Align the front part of the primary lock with the cast iron bracket, and carefully insert it into the glass door along the fixed sticker. Once in place, secure the iron bracket with screws.
3. Reattach the wire to the back part of the primary lock, and screw it onto the iron bracket.



1. Use a screwdriver to remove the back part of the second lock.
2. Insert the front part of the second lock's cast iron bracket into the glass door along the fixed paste.
3. Tighten the iron bracket to the glass door using screws.
4. Finally, secure the back part of the second lock to the iron bracket using screws.



Installation complete: Load on batteries and check if all the functions are normal.

## Programming:

### DOWNLOAD THE APP



<https://play.google.com/store/apps/details?id=com.tongtongsuo.app&hl=ru>

scan to download the APP



<https://apps.apple.com/ru/app/ttlock/id1033046018>

The iOS version of the software can be conveniently downloaded from the app store, while the Android version is available for download from the Google Play Store.

## Part 1: Operation With App

## **Add Bluetooth Administrator to the lock**

- To download and register the ttlock App:
- Download the “ttlock” app on your device
- Create an account and register in the app
- Activate the app by logging in

### **To add your door lock to the App:**

- Once logged in, press the “≡” sign in the upper left corner of the screen
- Select [Add lock] and choose “Door Lock”
- Activate the lock by touching the keypad to light it up
- The lock will prompt you to add a Bluetooth Administrator
- On the app, you’ll see a black “+” sign. Press it to add the lock
- Set the name of the lock and press [OK]
- Finally, press [Complete] to finish the setup process.

## **Send an Ekey**

To use the app and share an eKey with registered users, follow these simple steps:

- Activate the App
- Select the lock
- Press [Send eKey]
- Set the parameters of the eKey
- Press [Send] to share it with other registered users

## **Unlock with eKey**

Touch-to-Open: You can turn on the “touch to unlock” function in App Settings to use this feature.

- Activate the App.
- Activate the lock by touching the keypad to light it up.
- Voice prompt will confirm that the lock has been “Unlocked.”

Unlock with App: You can use the App to unlock the lock as well.

- Activate the App.
- Select the lock.
- Press the lock icon on the App.

Voice prompt will confirm that the lock has been “Unlocked.”

Unlock with Widget: Adding the “ttlock” widget to your iPhone allows you to unlock the lock quickly without unlocking the phone or opening the App.

## **Delete an eKey**

To delete an eKey from the App, follow these steps:

- Activate the App
- Select the lock

- Press [eKeys]
- Select the eKey to be deleted
- Press [Delete]

## **User Passcode**

### **Generate a user passcode**

To generate a passcode and share it with other users:

- Activate the app
- Select the lock you want to generate a passcode for
- Press [Generate Passcode]
- Set the parameters of the passcode as prompted
- Press [Generate]
- Once the passcode appears on the screen, click on the sharing icon to share it with other users.

### **Unlock with passcode**

To activate the lock, follow these steps:

- Touch the keypad to light it up.
- Input your passcode and press “#” to confirm.
- If you make a mistake, you can press “✖” to delete the last digit entered.
- If the passcode is correct, you’ll hear a voice prompt that says “Unlocked.”
- If the passcode is incorrect, you’ll hear a voice prompt that says “Operation failed.”
- If the passcode has expired, you’ll hear a voice prompt that says “Unauthorized passcode.”



The lock is designed to provide a high level of security. In the event that five unsuccessful attempts are made to enter the correct passcode, the lock will issue a clear and concise voice prompt that states, “Unauthorized operation detected. The system is now locked.”

### **Modify user passcode on the lock**

- Enter the current passcode [\*10 #]
- Enter the new passcode [original passcode#]
- Confirm the new passcode [new passcode#]
- Confirm the new passcode again [new passcode#]
- Wait for the voice prompt to say “Operation successful”

### **Delete a passcode**

To delete a passcode on the app, follow these steps:

- Activate the app on your device.
- Select the lock that you want to manage.
- Tap on [Passcodes] option.

- Choose the passcode that you want to delete from the list.
- Press [Delete] to confirm the action.

## **IC card/NFC**

### **Add an IC card**

To activate the app and add an IC card to your lock, follow these steps:

- Open the app and select the lock you want to configure.
- Tap [IC Cards] and then tap the “ : ” sign in the upper right corner of the screen.
- Tap [Add IC Card] and set the parameters of the card. Then tap [Next].
- When prompted, hold a Mifare card near the card reader area on the keypad of the lock.
- Wait for the voice prompt to say “Operation successful” before removing the card.

### **Delete an IC card**

To delete an IC card from the app, follow these simple steps:

- Activate the app
- Select the lock
- Press [IC Cards]
- Choose the IC card you want to delete
- Press [Delete]

### **Unlock with IC card**

- Place a card near the reader area on the keypad of the lock.
- If the card is a valid authorized card, a voice prompt will say “Unlocked”.
- If the card has expired, a voice prompt will say “Unauthorized card”.
- If the card has never been authorized, a voice prompt will say “Operation failed”.

### **Unlock with NFC**

- If android phones or watches and other devices have the same type of NFC access card, follow these steps to add an IC card:
  - Place the device directly close to the card reader area.
  - The card can be added successfully.
- If devices such as android phones or watches have not added access control cards of the same type, follow these steps:
  - Use a common IC card (generally an unencrypted card with a frequency of 13.56mhz) to be added with the lock.
  - Use the device to simulate the IC card.
  - After adding successfully, you can swipe the device like a common IC card to unlock.

## **Fingerprint**

## Add a fingerprint

To activate the app and add a new fingerprint, follow these simple steps:

- Open the app and select the lock you want to add a fingerprint to
- Tap the “⋮” icon in the upper right corner of the screen
- Select “Add Fingerprint” from the options that appear
- Set the parameters for the fingerprint and tap “Next” to proceed
- Tap “Start” to begin the fingerprint scanning process
- Follow the voice prompt and repeatedly place and lift your finger on the sensor until the app confirms that the input was successful

## Unlock with fingerprint

- To unlock the device, place a finger on the fingerprint sensor.
- If the fingerprint is authorized and valid, a voice prompt will confirm “Unlocked.”
- If the fingerprint is not authorized, a voice prompt will notify “Operation failed.”
- If the authorized fingerprint has expired, a voice prompt will indicate “Unauthorized card.”

## Delete a fingerprint

- To delete a fingerprint from the app:
- Activate the app
- Select the lock
- Press [Fingerprints]
- Choose the fingerprint you want to delete
- Press [Delete] to confirm



---

## Documents / Resources



[DALTON D0516 Smart Fingerprint Lock](#) [pdf] User Guide  
D0516 Smart Fingerprint Lock, D0516, Smart Fingerprint Lock, Fingerprint Lock, Lock

## References



- [User Manual](#)

[Manuals+](#), [Privacy Policy](#)

This website is an independent publication and is neither affiliated with nor endorsed by any of the trademark owners. The "Bluetooth®" word mark and logos are registered trademarks owned by Bluetooth SIG, Inc. The "Wi-Fi®" word mark and logos are registered trademarks owned by the Wi-Fi Alliance. Any use of these marks on this website does not imply any affiliation with or endorsement.