



Contents [[hide](#)]

1 Dals REC-EMD15 Emergency Driver

2 Specifications

3 CONNECTION DETAILS

4 WIRING DIAGRAMS FOR LED DRIVER WITH INPUT POWER HIGHER THAN
EMERGENCY OUTPUT POWER

4.1 IMPORTANT

4.2 FCC Notice

4.3 ISED Notice

4.4 WARRANTY

4.5 Frequently Asked Questions

5 Documents / Resources

5.1 References



Dals REC-EMD15 Emergency Driver

- If you are using a DC 12V sensor, ensure the correct connection with the emergency driver.

TRIAC / ELV Dimmable LED Driver Connection:

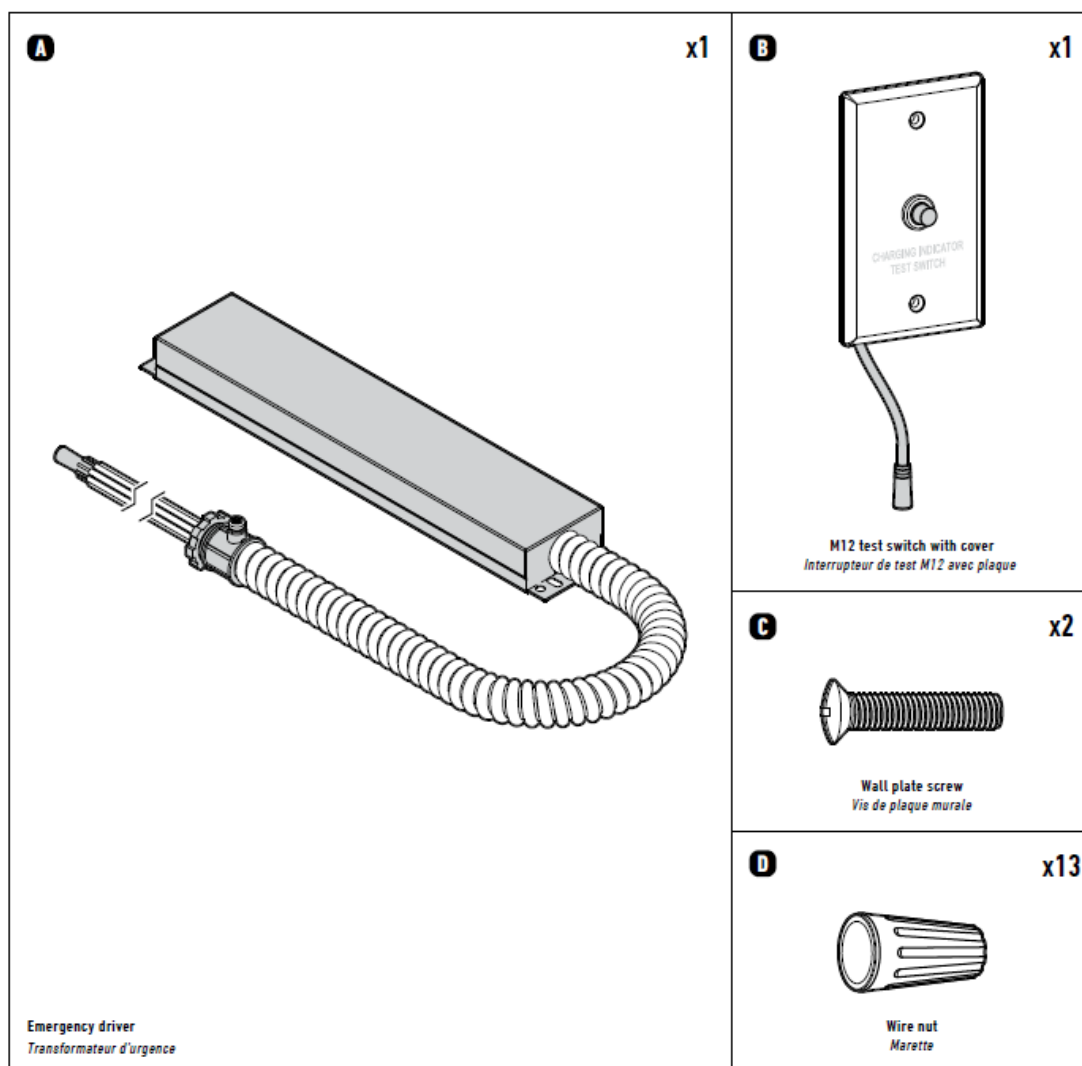
- No specific connection instructions are provided in the manual for this driver type.

Installation guide for

EMERGENCY DRIVER

REC-EMD08 / REC-EMD15

ITEMS INCLUDED IN THE BOX



CONNECTION DETAILS

BEFORE STARTING INSTALLATION, SHUT THE LINE FEED POWER OFF USING THE CIRCUIT BREAKER.

Instructions about a risk of fire, electric shock, or injury to persons. Installation must be done according to local electrical codes. Installation must be done by a qualified electrician.

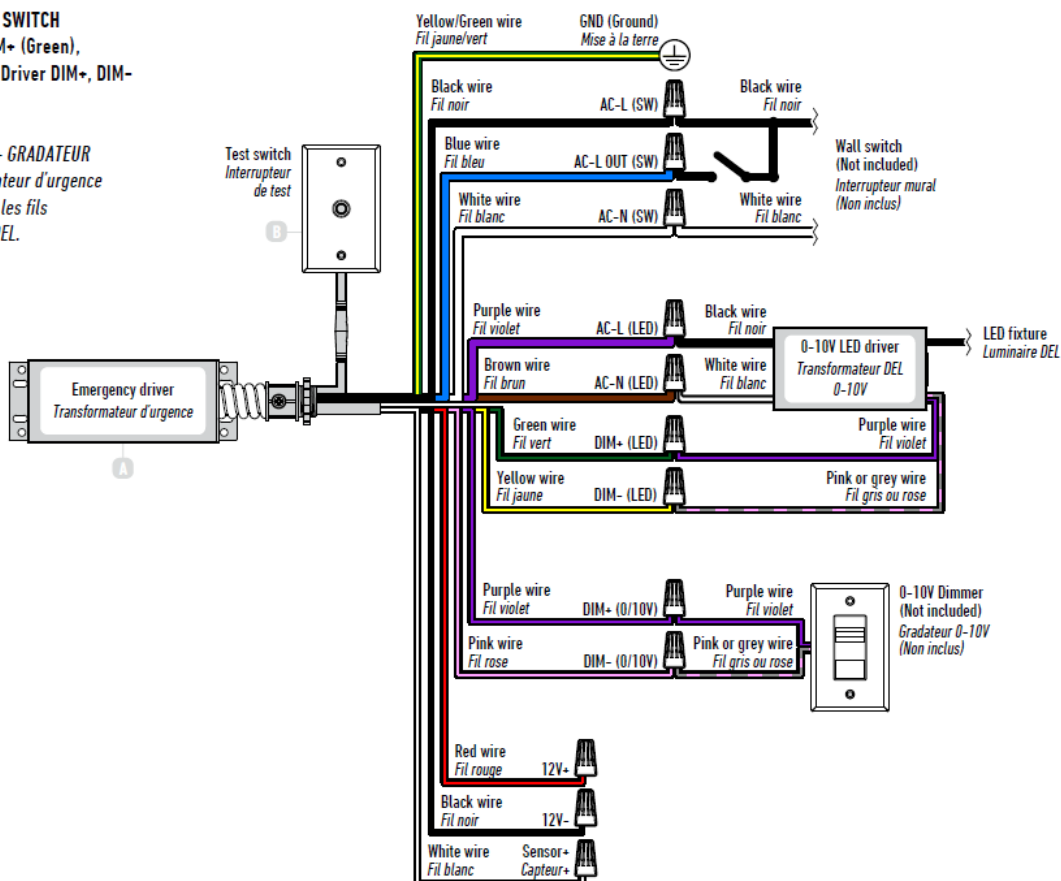
- The Emergency LED driver must connect to 0-10V dimming wires (DIM+, DIM-) of the fixture if the LED luminaire power exceeds the emergency LED driver power.
- When dimming to minimum, the LED luminaire power must be less than the emergency driver's power.
- In emergency mode, double-click this test switch to turn off the current emergency stage.

WIRING DIAGRAMS FOR LED DRIVER WITH INPUT POWER HIGHER THAN EMERGENCY OUTPUT POWER

- REC-EMD08: 60W MAX.
- REC-EMD15: 100W MAX.

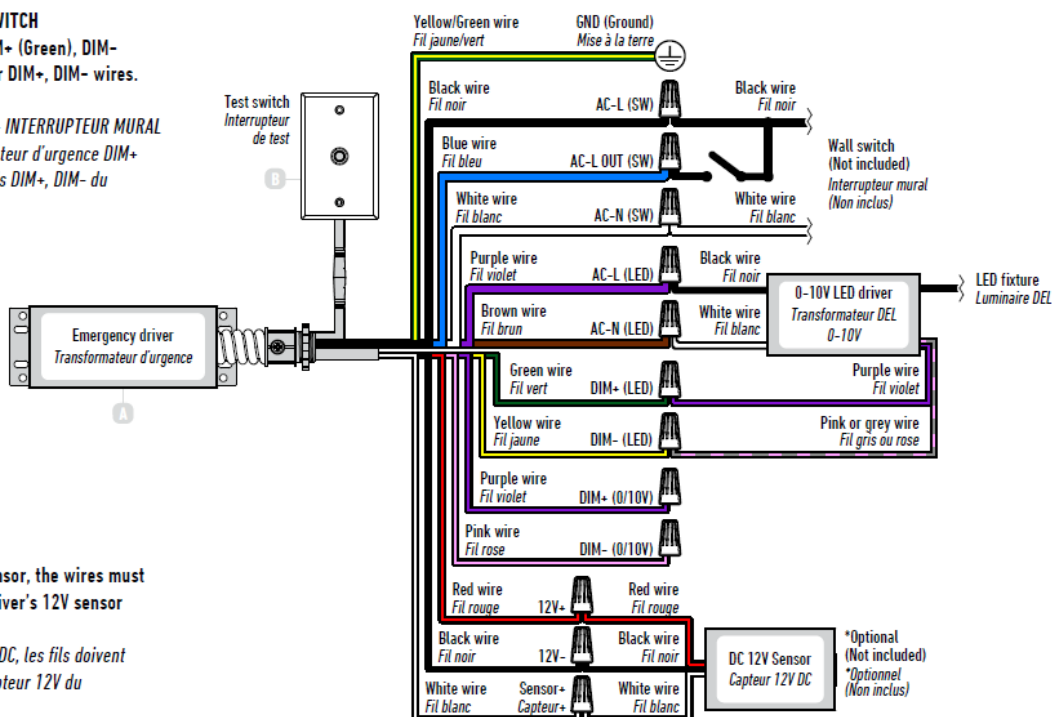
1 0-10V LED DRIVER + DIMMER SWITCH Connect emergency driver DIM+ (Green), DIM- (Yellow) wires with LED Driver DIM+, DIM- wires.

TRANSFORMATEUR DEL 0-10V + GRADATEUR
Connecter les fils du transformateur d'urgence DIM+ (Vert), DIM- (Jaune) avec les fils DIM+, DIM- du transformateur DEL.



2 0-10V LED DRIVER + WALL SWITCH Connect emergency driver DIM+ (Green), DIM- (Yellow) wires with LED Driver DIM+, DIM- wires.

TRANSFORMATEUR DEL 0-10V + INTERRUPTEUR MURAL
Connecter les fils du transformateur d'urgence DIM+ (Vert), DIM- (Jaune) avec les fils DIM+, DIM- du transformateur DEL.



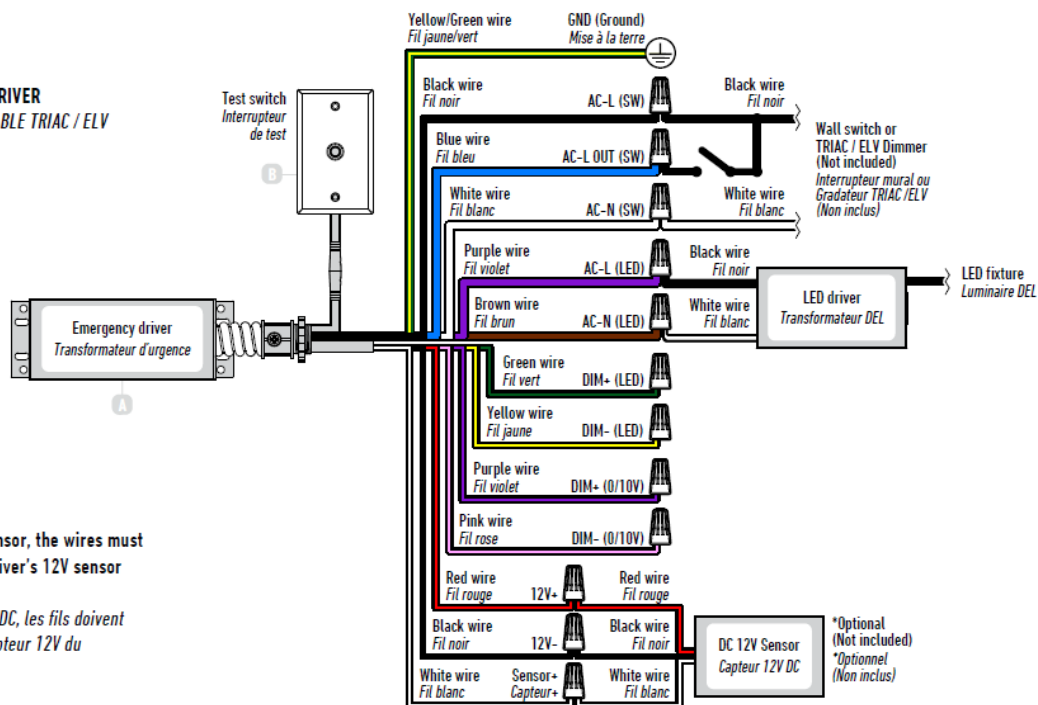
! If your are using a DC 12V sensor, the wires must connect to emergency LED driver's 12V sensor wires.

Si vous utilisez un capteur 12V DC, les fils doivent être connectés aux fils pour capteur 12V du transformateur d'urgence.

*Optional
(Not included)
*Optionnel
(Non inclus)

REC-EMD08: 8W MAX.
REC-EMD15: 15W MAX.

3 TRIAC / ELV DIMMABLE LED DRIVER TRANSFORMATEUR DEL GRADUABLE TRIAC / ELV



! If you are using a DC 12V sensor, the wires must connect to emergency LED driver's 12V sensor wires.
Si vous utilisez un capteur 12V DC, les fils doivent être connectés aux fils pour capteur 12V du transformateur d'urgence.

WARNING

CAUTION

Risk of shock:

- Disconnect emergency and normal input power sources before servicing any equipment connected to this unit.

Risk of fire or electrical shock:

- This emergency battery pack installation requires knowledge of luminaire and electrical systems.
- Servicing of this equipment should be performed by qualified personnel only.
- Before installation, make certain the AC power to the fixture is off.
- Suitable for use in 5°C -50°C ambient temperatures.
- Max. mounting height: 27.2 ft. for REC-EMD08 / 15.5ft for REC-EMD15
- Do not use outdoors.
- Do not mount near gas or electric heaters.
- Equipment should be mounted in locations and at heights where it will not be subjected to tampering by unauthorized personnel.

- The use of accessory equipment is not recommended by the manufacturer, may cause an unsafe condition.
- The emergency battery pack is not for use in an air-handling fixture.
- Do not use this equipment for anything other than its intended use.

IMPORTANT

- An unswitched AC power source is required (100-347 VAC, 50/60 Hz).
- Please charge the battery consistently for >24 hours for the first time usage so as to activate all the battery cells for the discharging/charging duration.
- Customers are advised to charge emergency LED drivers 24 hours every 6 months during storage, and which could be stocked for 1 year at most.
- If customers don't install and recharge for more than one year, the batteries may be damaged. This is not covered in the warranty, and we would charge for replacement.

FCC Notice

1. This device complies with Part 15 of the FCC Rules. Operation is subject to the following two conditions:
 1. This device may not cause harmful interference, and
 2. This device must accept any interference received, including interference that may cause undesired operation.
2. Changes or modifications not expressly approved by the party responsible for compliance could void the user's authority to operate the equipment.

This equipment has been tested and found to comply with the limits for a Class B digital device, pursuant to part 15 of the FCC Rules. These limits are designed to provide reasonable protection against harmful interference in a residential installation. This equipment generates, uses, and can radiate radio frequency energy and, if not installed and used in accordance with the instructions, may cause harmful interference to radio communications. However, there is no guarantee that interference will not occur in a particular installation. If this equipment does cause harmful interference to radio or television reception, which can be determined by turning the equipment off and on, the user is encouraged to try to correct the interference by one or more of the following measures:

- Reorient or relocate the receiving antenna.
- Increase the separation between the equipment and receiver.
- Connect the equipment into an outlet on a circuit different from that to which the receiver is connected.

ISED Notice

- This device contains licence-exempt transmitter(s)/receiver(s) that comply with Innovation,

Science and Economic Development Canada's licence-exempt RSS(s). Operation is subject to the following two conditions:

1. This device may not cause interference.
2. This device must accept any interference, including interference that may cause undesired operation of the device

Changes or modifications not expressly approved by the party responsible for compliance could void the user's authority to operate the equipment

WARRANTY

DALS offers a 5-year warranty from the date of purchase, which covers repairs or replacements of defective parts of the housing, optics, and electronics.

- CUSTOMER SERVICE:
 - 1 877 430-1818
 - info@dals.com
- © 2025 Dals Lighting, Inc. All Rights Reserved

Frequently Asked Questions

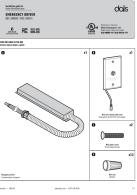
Q: What is the maximum power rating for REC-EMD08 and REC-EMD15?

A: REC-EMD08 has a maximum power rating of 60W, while REC-EMD15 has a maximum power rating of 100W.

Q: Are wall switches or 0-10V dimmers included with the emergency driver?

A: Wall switches and 0-10V dimmers are not included with the emergency driver and need to be sourced separately.

Documents / Resources

	dals REC-EMD15 Emergency Driver [pdf] Installation Guide REC-EMD08, REC-EMD15, REC-EMD15 Emergency Driver, Emergency Driver, Driver
---	--

References

- [User Manual](#)

💎 [dals](#), [driver](#), [Emergency Driver](#), [REC-EMD08](#), [REC-EMD15](#), [REC-EMD15 Emergency](#)

📁 [dals](#) [Driver](#)

Leave a comment

Your email address will not be published. Required fields are marked *

Comment *

Name

Email

Website

☐ Save my name, email, and website in this browser for the next time I comment.

Post Comment

Search:

e.g. whirlpool wrf535swhz

Search

[Manuals+](#) | [Upload](#) | [Deep Search](#) | [Privacy Policy](#) | [@manuals.plus](#) | [YouTube](#)

This website is an independent publication and is neither affiliated with nor endorsed by any of the trademark owners. The "Bluetooth®" word mark and logos are registered trademarks owned by Bluetooth SIG, Inc. The "Wi-Fi®" word mark and logos are registered trademarks owned by the Wi-Fi Alliance. Any use of these marks on this website does not imply any affiliation with or endorsement.